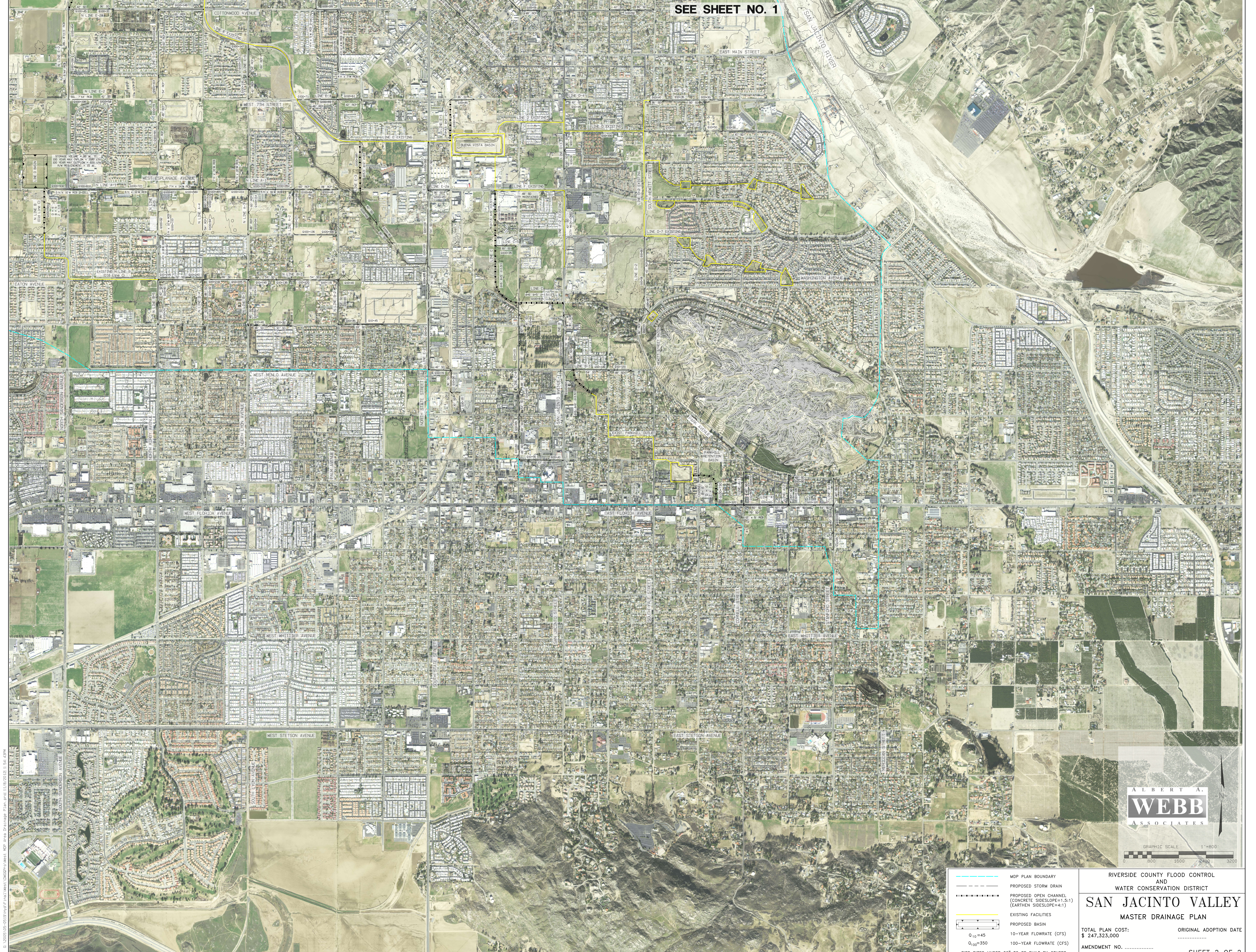
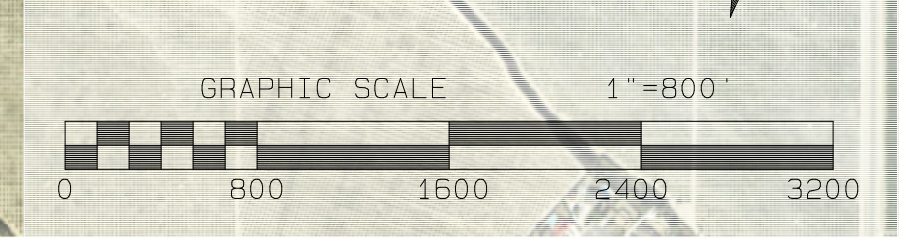


SEE SHEET NO. 1



ALBERT A. WEBB ASSOCIATES



- MDP PLAN BOUNDARY
 - PROPOSED STORM DRAIN
 - PROPOSED OPEN CHANNEL (CONCRETE SIDESLOPE=1:5:1) (EARTHEN SIDESLOPE=4:1)
 - EXISTING FACILITIES
 - PROPOSED BASIN
 - 10-YEAR FLOWRATE (CFS)
 - 100-YEAR FLOWRATE (CFS)
- PIPE SIZES UNDER 36" TO BE BUILT BY OTHERS

RIVERSIDE COUNTY FLOOD CONTROL AND WATER CONSERVATION DISTRICT
SAN JACINTO VALLEY
 MASTER DRAINAGE PLAN

TOTAL PLAN COST: \$ 247,323,000
 AMENDMENT NO.

ORIGINAL ADOPTION DATE
 SHEET 2 OF 2

G:\2005\105-105\105\105\Final\West_Village\Map\11/19/2012 1:54:45PM