

MINUTES OF THE BOARD OF SUPERVISORS
COUNTY OF RIVERSIDE, STATE OF CALIFORNIA



3-27

On motion of Supervisor Benoit, seconded by Supervisor Ashley and duly carried by unanimous vote, IT WAS ORDERED that the recommendation from Environmental Health regarding setting the Public Hearing on the Adoption of Resolution No. 2016-047 Establishing Rates for Organic Recycling Material Collection and Processing for CR&R Incorporated and Palm Springs Disposal Services, is taken off calendar.

Roll Call:

Ayes: Jeffries, Tavaglione, Washington, Benoit and Ashley
Nays: None
Absent: None

I hereby certify that the foregoing is a full true, and correct copy of an order made and entered on January 5, 2016 of Supervisors Minutes.

WITNESS my hand and the seal of the Board of Supervisors
Dated: January 5, 2016
Kecia Harper-Ihem, Clerk of the Board of Supervisors, in
and for the County of Riverside, State of California.

(seal)

By: *Kecia Harper-Ihem* Deputy

AGENDA NO.
3-27

xc: Environmental Health

FORM APPROVED COUNTY COUNSEL
BY: GREGORY P. PRIAMOS
DATE: 11/19/15

SUBMITTAL TO THE BOARD OF SUPERVISORS
COUNTY OF RIVERSIDE, STATE OF CALIFORNIA

221



FROM: Department of Environmental Health

SUBMITTAL DATE:
November 12, 2015

SUBJECT: Organic Recycling Material Collection and Processing Rate Establishment
[1,3,4 and 5th Districts, \$0]

RECOMMENDED MOTION:

1. Conduct a public hearing establishing rates for Organic Recycling Material Collection and Processing for CR&R Incorporated and Palm Springs Disposal Services; and
2. Upon the close of the Public Hearing, adopt Resolution No. 2016-047 Establishing rates for Organic Recycling Material Collection and Processing for CR&R Incorporated and Palm Springs Disposal Services.

BACKGROUND: The need to divert waste from landfills and find beneficial uses has created renewed interest in the area of organics recycling. In 2014, the State of California passed Assembly Bill 1826. This legislation requires mandatory recycling of organic waste.

(continued)

Steve Van Stockum
Steve Van Stockum
Director

SVS:JW

Departmental Concurrence

FINANCIAL DATA	Current Fiscal Year:	Next Fiscal Year:	Total Cost:	Ongoing Cost:	POLICY/CONSENT (per Exec. Office)
COST	\$ 0	\$ 0	\$ 0	\$ 0	Consent <input type="checkbox"/> Policy <input checked="" type="checkbox"/>
NET COUNTY COST	\$ 0	\$ 0	\$ 0	\$ 0	

SOURCE OF FUNDS: n/a

Budget Adjustment: No
For Fiscal Year: 15/16

C.E.O. RECOMMENDATION:

APPROVE
BY: *Steven C. Horn*
Steven C. Horn

County Executive Office Signature

MINUTES OF THE BOARD OF SUPERVISORS

FISCAL PROCEDURES APPROVED
PAUL ANGULO, CPA, AUDITOR-CONTROLLER

- A-30
- 4/5 Vote
- Positions Added
- Change Order

Prev. Agn. Ref.: 4/7/15 3-20 | District: 1,3,4,5 | Agenda Number:

3-27

SUBMITTAL TO THE BOARD OF SUPERVISORS, COUNTY OF RIVERSIDE, STATE OF CALIFORNIA

FORM 11: Organic Recycling Material Collection and Processing Rate Establishment

DATE: November 12, 2015

PAGE: Page 2 of 2

BACKGROUND:

Summary (continued)

Organic waste is defined as food waste, green waste, landscape and pruning waste, non-hazardous wood waste, and food soiled paper waste mixed with food waste. Starting in April 2016 businesses that generate 8 cubic yards of organic waste a week are required to arrange for recycling services. In the 3 years after the 2016 start date, smaller waste generating businesses will be added to the mandatory recycling of organics. On January 1, 2017, businesses that generate 4 cubic yards of organic waste per week; January 1, 2019, businesses that generate 4 cubic yard of any waste per week; and an option on January 1, 2020 to require businesses generating as little as 2 cubic yard of any waste per week.

The Department of Environmental Health (Department) administers the Franchise Waste Collection Agreements and determines appropriate rates for services rendered. Two companies have presented rates to provide these collection services. The cost to handle this type of waste is greater than the typical business related debris. In addition, CR&R Inc has proposed a new rate to process organic waste generated from residences in an environmentally sound method through a new system of Anaerobic Digesters. The technology and scale of this project is the first of its kind in the United States. On the residential side of the equation, CR&R is proposing a surcharge of \$2.04 per month for residential green waste service to pay for the new treatment facility. Commercial customers will pay for their service based upon their individual needs. After the organic waste is collected, the end product will consist of a high grade soil amendment and renewable natural gas to power CR&R's truck fleet. The new rates are specified in Attachment 1. These rates will be integrated into the regular rate structure maintained by the Department.

Impact on Citizens and Businesses

The approval of this item would assist the community in meeting the requirements of State Assembly Bill 1826 for the recycling of organic wastes and put the collected materials to a beneficial use.

2 **RESOLUTION NO. 2016-047**

3 **A RESOLUTION OF THE COUNTY OF RIVERSIDE ESTABLISHING**

4 **ORGANIC WASTE HANDLING FEES FOR FRANCHISE AREAS 5,6,7,8,9,AND 10**

5 WHEREAS, California Government Code section 25827 authorizes the Board of Supervisors to
6 prescribe terms and conditions for the collection of solid waste in the unincorporated areas of Riverside
7 County; and

8 WHEREAS, California Public Resources Code section 40059 authorizes the County of Riverside
9 to determine all aspects of solid waste handling which are of local concern, including whether the services
10 are to be provided by nonexclusive franchise, and the charges and fees for such service; and

11 WHEREAS, Riverside County Ordinance 745 has established that a solid waste hauler, duly
12 permitted or franchised by the County of Riverside pursuant to the provisions of Riverside County
13 Ordinance No. 657, shall be entitled to payment for services rendered in the amounts as specified in a
14 Resolution adopted by the Board of Supervisors; and


15 WHEREAS, the Board of Supervisors recognizes the benefits of entering into Waste Hauler
16 Franchise Agreements for the efficiency of solid waste management; and

17 WHEREAS, the County of Riverside is seeking methods for Waste Hauler to abide with
18 Assembly Bill 1826; and

19 WHEREAS, each Waste Collection Franchise Agreement serviced by CR & R Incorporated and
20 Palm Springs Disposal Services have provided acceptable documentation indicating the higher costs to
21 process organic wastes;

22 WHEREAS, the Board of Supervisors acknowledges the need for the rates to provide organic
23 waste handling and disposal;

24 BE IT RESOLVED AND ORDERED that the Board of Supervisors of the County of Riverside,
25 State of California, in regular session assembled on _____, finds that the waste hauler fees
26 reflected in Attachment 1 shall be granted for the remainder of fiscal year 2015-2016 and shall be
27 incorporated into the regular fee mechanism administered by the Department of Environmental Health;

FORM APPROVED COUNTY COUNSEL
BY:  ERIC STOPHER
DATE: 11/19/15

CR&R Incorporated-Anaerobic Digester Fees

Franchise Areas 5, 6, 7 and 9

Two Cubic Yard Commercial Bins Non-Food Establishment - Organics			
Frequency	Service	Digester	Total Rate
1x per Week	\$ 86.32	\$ 62.79	\$ 149.11
2xPer Week	\$ 172.65	\$ 125.57	\$ 298.22
3x per Week	\$ 259.01	\$ 188.36	\$ 447.37
4x per Week	\$ 345.33	\$ 251.14	\$ 596.47
5x per Week	\$ 431.65	\$ 313.93	\$ 745.58
6x Per Week	\$ 517.99	\$ 376.71	\$ 894.70
Three Cubic Yard Commercial Bins Non-Food Establishment - Organics			
Frequency	Service	Digester	Total Rate
1x per Week	\$ 100.91	\$ 94.18	\$ 195.09
2xPer Week	\$ 201.80	\$ 188.36	\$ 390.16
3x per Week	\$ 302.71	\$ 282.53	\$ 585.24
4x per Week	\$ 403.61	\$ 376.71	\$ 780.32
5x per Week	\$ 504.51	\$ 470.89	\$ 975.40
6x Per Week	\$ 605.40	\$ 565.07	\$ 1170.47
Two Cubic Yard Commercial Bins Food Establishment - Organics			
Frequency	Service	Digester	Total Rate
1x per Week	\$ 86.32	\$ 109.87	\$ 196.19
2xPer Week	\$ 172.65	\$ 219.75	\$ 392.40
3x per Week	\$ 259.01	\$ 329.62	\$ 588.63
4x per Week	\$ 345.33	\$ 439.50	\$ 784.83
5x per Week	\$ 431.65	\$ 549.37	\$ 981.02
6x Per Week	\$ 517.99	\$ 659.24	\$ 1177.23
Three Cubic Yard Commercial Bins Food Establishment - Organics			
Frequency	Service	Digester	Total Rate
1x per Week	\$ 100.91	\$ 164.81	\$ 265.72
2xPer Week	\$ 201.80	\$ 329.62	\$ 531.42
3x per Week	\$ 302.71	\$ 494.43	\$797.14
4x per Week	\$ 403.61	\$ 659.24	\$1062.85
5x per Week	\$ 504.51	\$ 824.05	\$1328.56
6x Per Week	\$ 605.40	\$ 988.86	\$1594.26

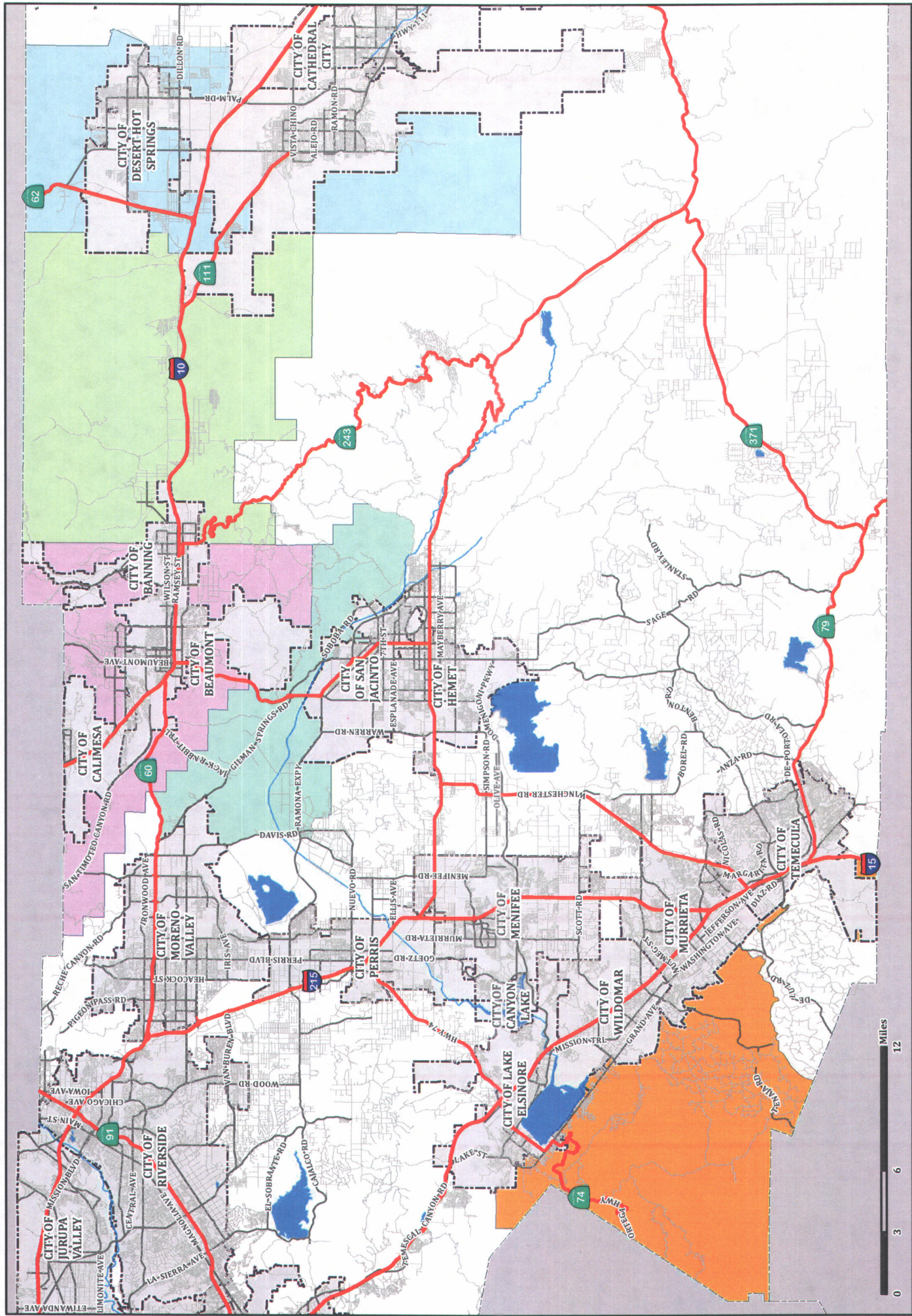
Attachment 1

64 Gallon Commercial Cart Non-Food Establishment - Organics			
Frequency	Service	Digester	Total Rate
1x per Week	\$ 18.00	\$ 9.95	\$ 27.95
2xPer Week	\$ 36.00	\$ 19.89	\$ 55.89
3x per Week	\$ 54.00	\$ 29.84	\$ 83.84
4x per Week	\$ 72.00	\$ 39.79	\$ 111.79
5x per Week	\$ 90.00	\$ 49.73	\$ 139.73
6x Per Week	\$ 108.00	\$ 59.68	\$ 167.68
64 Gallon Commercial Cart Food Establishment - Organics			
Frequency	Service	Digester	Total Rate
1x per Week	\$ 18.00	\$ 17.41	\$ 35.41
2xPer Week	\$ 36.00	\$ 34.82	\$ 70.82
3x per Week	\$ 54.00	\$ 52.23	\$ 106.23
4x per Week	\$ 72.00	\$ 69.64	\$ 141.64
5x per Week	\$ 90.00	\$ 87.04	\$ 177.04
6x Per Week	\$ 108.00	\$ 104.45	\$ 212.45
Roll Off – Open Top Organics including Food waste			
Frequency	Service	Digester	Total Rate
1x per Week	\$ 326.07	\$72.50 per ton	Varies based on weight
Compactors Organics including Food waste			
Frequency	Service	Digester	Total Rate
1x per Week	\$ 652.14	\$72.50 per ton	Varies based on weight

Palm Springs Disposal Services

Franchise Area 10

32 Gallon Commercial Cart Organics including Food waste			
Frequency	Service	Processing/Recycle	Total Rate
1x per Week	\$ 7.75	\$ 8.31	\$ 16.06
65 Gallon Commercial Cart Organics including Food waste			
Frequency	Service	Processing/Recycle	Total Rate
1x per Week	\$ 11.62	\$ 16.61	\$ 28.23
Two Cubic Yard Commercial Bins Organics including Food waste			
Frequency	Service	Processing/Recycle	Total Rate
1x per Week	\$ 54.82	\$ 33.24	\$ 88.06



ORGANIC RECYCLING RATE AREAS
 CR&R AND PALM SPRINGS DISPOSAL SERVICES



DECEMBER 28, 2015



- FRANCHISE AREA 5
- FRANCHISE AREA 6
- FRANCHISE AREA 7
- FRANCHISE AREA 9
- FRANCHISE AREA 10
- CITY BOUNDARY

