

FORM APPROVED COUNTY COUNSEL 3/21/16
 BY: GREGORY P. PRAMOS DATE

**SUBMITTAL TO THE BOARD OF SUPERVISORS
 COUNTY OF RIVERSIDE, STATE OF CALIFORNIA**

301 A



FROM: TLMA - Transportation Dept.

SUBMITTAL DATE:
 April 14, 2016

SUBJECT: Adoption of Resolution No. 2016-101 ordering the Annexation of Zone 195 (Lake Hills) into Landscaping and Lighting Maintenance District No. 89-1 Consolidated, District 1 [\$7,962 Annual]; L&LMD No. 89-1-C – 100%.

RECOMMENDED MOTION: That the Board of Supervisors:

1. Adopt Resolution No. 2016-101, Resolution of the County of Riverside ordering the annexation, and confirming the diagram and assessment of Zone 195 of Landscaping and Lighting Maintenance District No. 89-1-Consolidated, and levying assessments on all assessable lots and parcels of land therein within the boundaries of Zone 195 for fiscal year 2016-17.
2. Direct the Auditor-Controller's office to establish an interest-bearing sub-fund 20300 to receive deposits and interest thereon from Zone 195 of Landscaping and Lighting Maintenance District No. 89-1-Consolidated; in accordance with Section 22655-22656 of the Streets and Highways Code.

Departmental Concurrence

Patricia Romo
 Assistant Director of Transportation

Juan C. Perez
 Director of Transportation and Land Management

FINANCIAL DATA	Current Fiscal Year:	Next Fiscal Year:	Total Cost:	Ongoing Cost:	POLICY/CONSENT (per Exec. Office)
COST	\$ 0	\$ 7,962	\$ N/A	\$ 7,962	Consent <input type="checkbox"/> Policy <input checked="" type="checkbox"/>
NET COUNTY COST	\$ 0	\$ 0	\$ 0	\$ 0	

SOURCE OF FUNDS L&LMD No. 89-1-C – 100%
 There are no General Funds used in this project.

Budget Adjustment: N/A
 For Fiscal Year: 16/17

C.E.O. RECOMMENDATION:

APPROVE
 BY:
 Tina Grande

County Executive Office Signature

MINUTES OF THE BOARD OF SUPERVISORS

On motion of Supervisor Washington, seconded by Supervisor Ashley and duly carried, IT WAS ORDERED that the above matter is approved as recommended.

Ayes: Jeffries, Washington, Benoit and Ashley
 Nays: None
 Absent: Tavaglione
 Date: April 26, 2016
 xc: Transp.

Kecia Harper-Ihem
 Clerk of the Board
 By:
 Deputy

- A-30
- Positions Added
- 4/5 Vote
- Change Order

Prev. Agn. Ref.: 1/26/16, 3-31
 3/15/16, 9-1

District: 1

Agenda Number:

3-32

SUBMITTAL TO THE BOARD OF SUPERVISORS, COUNTY OF RIVERSIDE, STATE OF CALIFORNIA
FORM 11: Adoption of Resolution No. 2016-101, Ordering the Annexation of Zone 195 (Lake Hills) into Landscaping and Lighting Maintenance District No. 89-1 Consolidated. 1st District; [\$7,962 Annual]; L&LMD No. 89-1-C 100%

DATE: April 14, 2016

PAGE: 2 of 3

BACKGROUND:

Summary

Landscaping and Lighting Maintenance Districts (L&LMD's) are formed for the purpose of creating a funding mechanism to pay for the installation and maintenance of landscaping, streetlights, traffic signals, drainage inlet water quality filters, decorative fencing, and other roadside features within the road right of way. Within an established L&LMD, zones are created for specific developments, a fee structure is developed specific to the features within that zone, and the zone is then assessed through a tax levy on annual basis for the installation and maintenance of the features within that particular zone.

L&LMD No. 89-1-Consolidated (89-1-C) was formed in 1994, Resolution No. 94-389, and currently consists of 124 individual zones with different fee structures spread throughout the County of Riverside (County). The property owner of Tract Map No. 30473, as described in the attached Exhibit "A", has petitioned the County to annex their property into L&LMD No.89-1-C, creating Zone 195. The boundaries of Zone 195 will encompass the entire Tract Map No. 30473 and will include the maintenance and servicing of landscaping and streetlights.

On March 15, 2016, a public hearing was held to receive all testimony regarding the annexation of Zone 195 to L&LMD No. 89-1-C. After closing the public hearing, the Board of Supervisors directed the Director of the County of Riverside Transportation Department (Transportation Department), or his/her designee, to tally the assessment ballots that had been received prior to the close of the hearing. The assessment ballots were to be tabulated on March 16, 2016 at 10:00 a.m. in Conference Room C on the 8th Floor of the County Administrative Center. The tabulation shows that votes representing 32 parcels out of a possible 32 were cast, and that 32 votes (or 100%) were cast in favor of the annexation of Zone 195 to L&LMD No. 89-1-C and the levy and enrollment of the special assessment.

Adoption of Resolution No. 2016-101 confirms the assessment levy as indicated in the Engineer's Report for fiscal year 2016-17 for Zone 195 of L&LMD No. 89-1-C and orders the placement of the annual assessment on the County's Assessment Roll for fiscal year 2016-17.

Reference

At the direction of the Riverside County Board of Supervisors, L&LMD No. 89-1-C was formed in 1994 by Resolution No. 94-389 authorizing the annexation of new zones into L&LMD No. 89-1-C for the purpose of levying assessments to pay for the installation and maintenance of landscaping, streetlights and other right-of-way approved improvements.

The zone specific Engineer's Report for fiscal year 2016-2017 was prepared in compliance with the requirement of Article 4, Chapter, 1, of the Landscaping and Lighting Act of 1972, which is Part 2, Division 15 of the California Streets and Highways Code. The County initiates annexation proceedings for the annual levy of assessments by passing a resolution, which proposes the new levy under the Landscaping and Lighting Act of 1972. This resolution also describes the improvements, describes the location of the zone within the District and finally orders an engineer, who is a registered professional engineer, certified by the State of California, to prepare and file a detailed report.

In November 1996, California voters passed Proposition 218, Right to Vote on Taxes Act which added Articles XIII C and XIII D to the California Constitution, new procedures must be followed to levy annual assessments under the Landscaping and Lighting Act of 1972. A County may levy annual assessments for an assessment district after complying with the requirements of the Landscaping and Lighting Act of 1972, and the provisions of Proposition 218 Right to Vote on Taxes Act.

SUBMITTAL TO THE BOARD OF SUPERVISORS, COUNTY OF RIVERSIDE, STATE OF CALIFORNIA
FORM 11: Adoption of Resolution No. 2016-101, Ordering the Annexation of Zone 195 (Lake Hills) into Landscaping and Lighting Maintenance District No. 89-1 Consolidated. 1st District; [\$7,962 Annual]; L&LMD No. 89-1-C 100%

DATE: April 14, 2016

PAGE: 3 of 3

Impact on Residents and Businesses

The new assessment is for the purpose of providing the maintenance and servicing of landscaping and streetlights within public right-of-way.

Only the property owners within the proposed boundaries of Zone 195, which are represented by Tract Map No. 30473, as described in the attached Exhibit "A" (a two page exhibit containing a description and diagram) are impacted by the cost of this annexation. By setting up an assessment for the maintenance of certain infrastructure required by the development, the County requires that the development pay for its maintenance impact, rather than the obligation falling upon public funding sources.

SUPPLEMENTAL:

Additional Fiscal Information

The proposed budget for fiscal year 2016-17 for Zone 195 is \$7,961.63. This will result in an assessment for fiscal year 2016-17 within Zone 195 of \$248.80 per parcel. Zone 195 includes 32 single-family residential lots. The annual assessment may be adjusted annually by the greater of 2% or the cumulative percentage increase in the Consumer Price Index for all Urban Customers (CPI-U), if any, as it stands as of March of each year over the base index for March of 2016.

Contract History and Price Reasonableness

N/A

ATTACHMENTS:

Location Map
Exhibit A
Resolution No. 2016-101

RESOLUTION NO. 2016-101

RESOLUTION OF THE BOARD OF SUPERVISORS OF THE COUNTY OF RIVERSIDE ORDERING THE ANNEXATION OF ZONE 195 TO LANDSCAPING AND LIGHTING MAINTENANCE DISTRICT NO. 89-1-CONSOLIDATED OF THE COUNTY OF RIVERSIDE AND CONFIRMING THE DIAGRAM AND ASSESSMENT FOR ZONE 195 OF LANDSCAPING AND LIGHTING MAINTENANCE DISTRICT NO. 89-1-CONSOLIDATED AND LEVYING ASSESSMENTS ON ALL ASSESSABLE LOTS AND PARCELS OF LAND THEREIN WITHIN THE BOUNDARIES OF SAID ZONE FOR THE FISCAL YEAR 2016-17

WHEREAS, on January 26, 2016 the Board of Supervisors (hereinafter the "Board of Supervisors") of the County of Riverside (hereinafter the "County") adopted Resolution No. 2016-066, pursuant to Section 22608 and Section 22585 et seq. of the Streets and Highways Code, declaring the intention of the Board of Supervisors to order the annexation of Zone 195 to Landscaping and Lighting Maintenance District No. 89-1-Consolidated (hereinafter "L&LMD No. 89-1-C") of the County pursuant to the Landscaping and Lighting Act of 1972, being Part 2 (commencing with Section 22500) of Division 15 of the Streets and Highways Code, and giving notice of and setting a public hearing for 9:00a.m. on March 15, 2016 at the meeting room of the Board of Supervisors and requiring that the notice of the public hearing and assessment ballots be mailed to all owners of property within Zone 195 as shown on the equalized tax roll; and

WHEREAS, notice of said public hearing was duly published and mailed as required by Resolution No. 2016-066, Section 22626 of the Streets and Highways Code and Sections 53753 and 54954.6 of the Government Code and the assessment ballots were timely mailed to all owners of property within said Zone 195 as shown on the equalized tax roll; and

WHEREAS, at 9:00 a.m. on March 15, 2016, as set forth in Resolution No. 2016-066, the Board of Supervisors held a public hearing and afforded all interested persons an opportunity to be heard, and considered all oral statements and all written protest or communications made or filed by any interested persons, closed the public hearing and directed the Director of Transportation, or his designee, as an impartial person having no vested interest in the annexation of Zone 195 to L&LMD

FORM APPROVED COUNTY COUNSEL
BY: Dale A. Gardner 5/18/16
DATE

1 No. 89-1-C as required by Section 53753(e) of the Government Code to tally the assessment ballots
2 that had been received prior to the close of the public hearing; and

3 **WHEREAS**, the tally of the assessment ballots show that assessment ballots were timely
4 received from the owners of 32 parcels out of a possible 32 parcels and that 32 parcels (100 percent
5 of the assessment ballots received) voted in favor of annexation of Zone 195 to L&LMD No. 89-1-C
6 and the levy of an annual assessment in said Zone 195 beginning fiscal year 2016-17; and

7 **WHEREAS**, the Board of Supervisors may proceed, pursuant to Section 22631 of the Streets
8 and Highways Code, to adopt a resolution confirming the diagram and assessment, either as originally
9 proposed, or as changed by the Board of Supervisors, and the adoption of such a resolution shall
10 constitute the levy of an assessment on all assessable lots and parcels of land within Zone 195 of
11 L&LMD No. 89-1-C beginning fiscal year 2016-17.

12 **NOW, THEREFORE, BE IT RESOLVED, FOUND, DETERMINED AND ORDERED** by the
13 Board of Supervisors of the County in regular session on as follows:

14 **Section 1. Findings.** The Board of Supervisors finds:

- 15 (a) the proceeding recitals are correct;
- 16 (b) compliance has been had with all the requirements of the Landscaping and
17 Lighting Act of 1972, being Part 2 (commencing with Section 22500) of Division
18 15 of the Streets and Highways Code, and Sections 53753 and 54954.6 of the
19 Government Code;
- 20 (c) a majority protest to the annexation of, and annual assessment of, Zone 195 of
21 L&LMD No. 89-1-C has not been filed;
- 22 (d) the tally of the assessment ballots timely received was 100 percent voted in
23 favor of annexation of Zone 195 to L&LMD No. 89-1-C and the levy of an annual
24 assessment beginning fiscal year 2016-17, and 0 percent voted no;
- 25 (e) the Board of Supervisors may proceed to adopt a resolution ordering the
26 annexation of Zone 195 to L&LMD No. 89-1-C;

- 1 (f) the Board of Supervisors may proceed to adopt a resolution confirming the
2 diagram and assessment for Zone 195 of L&LMD No. 89-1-C either as originally
3 proposed or as changed by it; and
- 4 (g) the assessments to be levied on the assessable lots and parcels of land within
5 Zone 195 of L&LMD No. 89-1-C for the maintenance and servicing of
6 landscaping and streetlights improvements in said Zone 195 during the fiscal
7 year 2016-17 as contained in the report of the Director of Transportation which
8 is on file with the Clerk of the Board of Supervisors (hereinafter the "Report") are
9 based on benefits derived by such lots and parcels from the availability of such
10 landscaping and streetlights improvements, and are not based upon the
11 ownership of such lots and parcels.

12 **Section 2. Annexation.** Zone 195, as proposed to be annexed to L&LMD No.
13 89-1-C, includes all the property subject to Tract Map No. 30473 in the County of Riverside, State of
14 California as described in Exhibit "A" attached hereto, shall be and is annexed into L&LMD No. 89-1-C.

15 **Section 3. Improvements.** The improvements authorized for Zone 195 of L&LMD
16 No. 89-1-C are:

- 17 (a) The maintenance and servicing of landscaping within the public right-of-way
18 including the trimming, fertilizing, weeding and replanting of trees, shrubs, grass,
19 and other ornamental vegetation; and
- 20 (b) Providing electricity to and the maintenance and servicing of streetlights within
21 the public right-of-way including incidental costs and expenses.

22 **Section 4. Confirmation of Report.** The Report and the assessment diagram and
23 the assessment of estimated costs for the maintenance and servicing of landscaping and streetlights
24 improvements in Zone 195 of L&LMD No. 89-1-C for fiscal year 2016-17 as contained in the Report
25 are confirmed.

1 **Section 5. Levy of Assessment.** Pursuant to Section 22631 of the Streets and
2 Highways Code the adoption of this resolution constitutes the levy of the assessment for the
3 maintenance and servicing of landscaping and streetlights improvements in Zone 195 of L&LMD No.
4 89-1-C during fiscal year 2016-17, as contained in the Report, and such assessment is levied. The
5 Clerk of the Board of Supervisors is directed to file a certified copy of this resolution, together with the
6 diagram and assessment contained in the Report with the County Auditor-Controller of the County of
7 Riverside, who, pursuant to Section 22645 of the Streets and Highways Code, shall enter on the
8 County Tax Roll opposite each lot or parcel of land the amount assessed thereupon, as shown in said
9 assessment.

10 **Section 6. Effective Date.** This Resolution shall take effect from and after its date
11 of adoption.

12
13 ROLL CALL:

14 Ayes: Jeffries, Washington, Benoit and Ashley
15 Nays: None
16 Absent: Tavaglione

17 The foregoing is certified to be a true copy of a resolution duly
18 adopted by said Board of Supervisors on the date therein set forth.

19 KECIA HARPER-IHEM, Clerk of said Board

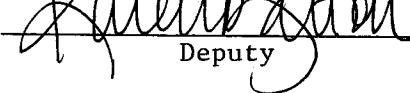
20 By 
21 Deputy

EXHIBIT "A"

DESCRIPTION OF BOUNDARIES

The boundaries of Zone 195 to be annexed into Landscaping and Lighting Maintenance District No. 89-1-Consolidated, of the County of Riverside, are coterminous with the boundaries of 32 parcel(s) as shown on Tract Map No. 30473 in the County of Riverside, State of California for fiscal year 2016-17.

1
2
3
4
5
6
7
8
9
10
11
12
13
14
15
16
17
18
19
20
21
22
23
24

LANDSCAPING AND LIGHTING MAINTENANCE DISTRICT NO. 89-1-CONSOLIDATED

ZONE 195

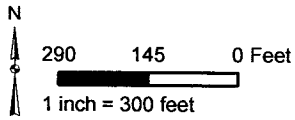
PORTION OF SECTIONS 25 & 30, T.3., R.5 & 6 W.

TR30473

32 PARCELS

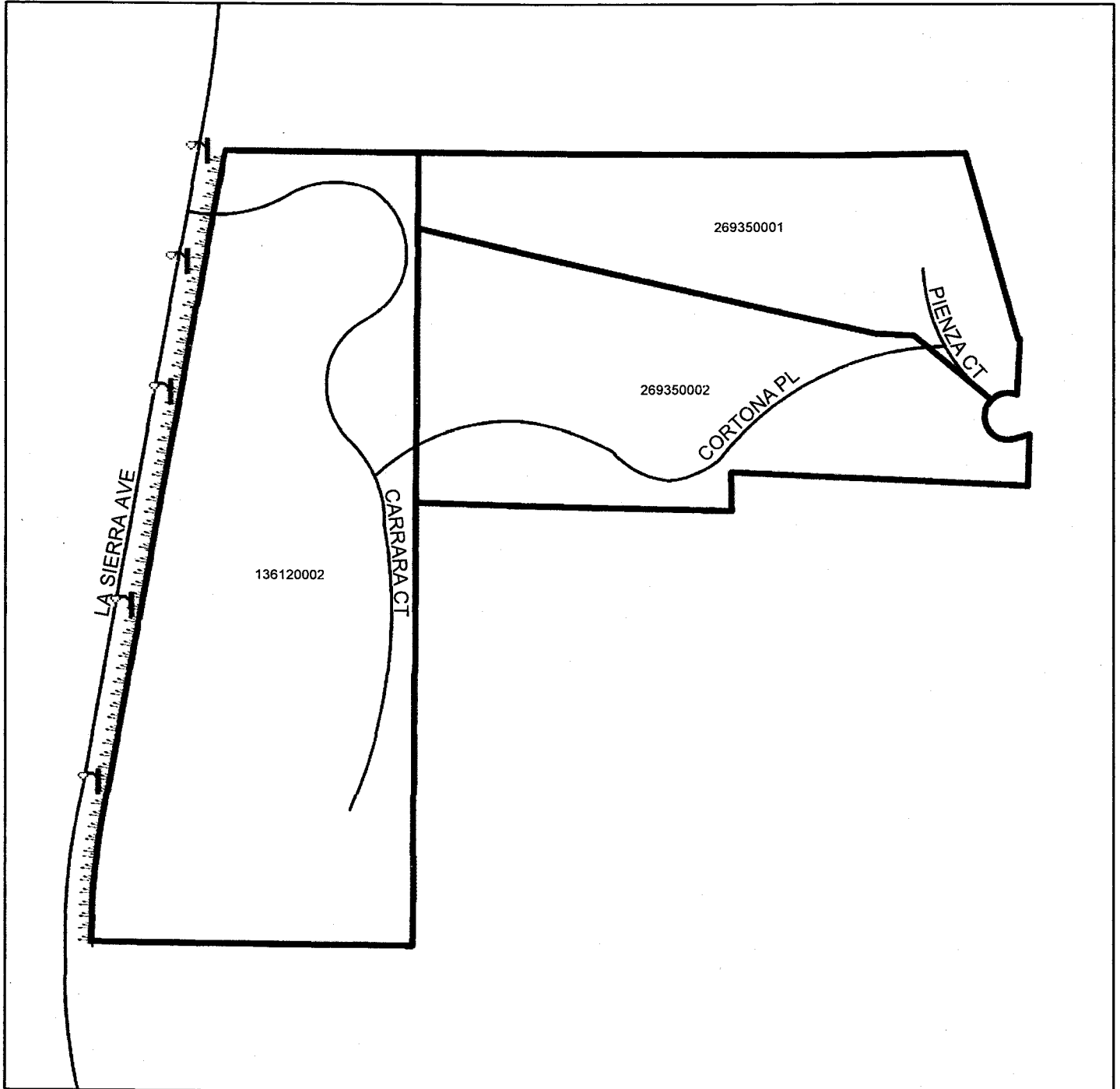


The County of Riverside assumes no warranty or legal responsibility for the information contained on this map. Data and information represented on this map is subject to updates, modifications and may not be complete or appropriate for all purposes. County GIS and other sources should be queried for the most current information. Do not copy or resell this map.



ASSESSMENT DIAGRAM

Printed by bhahn on 12/4/2015



▤▤▤▤▤ DENOTES MAINTAINED PARKWAY

⌚ DENOTES MAINTAINED STREETLIGHT

Location Map



CITY OF RIVERSIDE

VICTORIA AVE

CLEVELAND AVE

MCALLISTER PKWY

LAKE KNOLL PKWY

LA SIERRA AVE

TR 30473

POINTE DR

GREENTREE DR

BLACKBURN RD

MCALLISTER ST

EL SOBRANTE RD

