

APPENDIX "A"

**SCAQMD Form 403-N & Rule 403 Dust Control
Requirement Tables 2 & 3**

(This page left intentionally blank)

Table 2
DUST CONTROL MEASURES FOR LARGE OPERATIONS

FUGITIVE DUST SOURCE CATEGORY	CONTROL ACTIONS
Earth-moving (except construction cutting and filling areas, and mining operations)	<p>(1a) Maintain soil moisture content at a minimum of 12 percent, as determined by ASTM method D-2216, or other equivalent method approved by the Executive Officer, the California Air Resources Board, and the U.S. EPA. Two soil moisture evaluations must be conducted during the first three hours of active operations during a calendar day, and two such evaluations each subsequent four-hour period of active operations; OR</p> <p>(1a-1) For any earth-moving which is more than 100 feet from all property lines, conduct watering as necessary to prevent visible dust emissions from exceeding 100 feet in length in any direction.</p>
Earth-moving: Construction fill areas:	<p>(1b) Maintain soil moisture content at a minimum of 12 percent, as determined by ASTM method D-2216, or other equivalent method approved by the Executive Officer, the California Air Resources Board, and the U.S. EPA. For areas which have an optimum moisture content for compaction of less than 12 percent, as determined by ASTM Method 1557 or other equivalent method approved by the Executive Officer and the California Air Resources Board and the U.S. EPA, complete the compaction process as expeditiously as possible after achieving at least 70 percent of the optimum soil moisture content. Two soil moisture evaluations must be conducted during the first three hours of active operations during a calendar day, and two such evaluations during each subsequent four-hour period of active operations.</p>

Table 2 (Continued)

FUGITIVE DUST SOURCE CATEGORY	CONTROL ACTIONS
Earth-moving: Construction cut areas and mining operations:	(1c) Conduct watering as necessary to prevent visible emissions from extending more than 100 feet beyond the active cut or mining area unless the area is inaccessible to watering vehicles due to slope conditions or other safety factors.
Disturbed surface areas (except completed grading areas)	(2a/b) Apply dust suppression in sufficient quantity and frequency to maintain a stabilized surface. Any areas which cannot be stabilized, as evidenced by wind driven fugitive dust must have an application of water at least twice per day to at least 80 percent of the unstabilized area.
Disturbed surface areas: Completed grading areas	(2c) Apply chemical stabilizers within five working days of grading completion; OR (2d) Take actions (3a) or (3c) specified for inactive disturbed surface areas.
Inactive disturbed surface areas	(3a) Apply water to at least 80 percent of all inactive disturbed surface areas on a daily basis when there is evidence of wind driven fugitive dust, excluding any areas which are inaccessible to watering vehicles due to excessive slope or other safety conditions; OR (3b) Apply dust suppressants in sufficient quantity and frequency to maintain a stabilized surface; OR (3c) Establish a vegetative ground cover within 21 days after active operations have ceased. Ground cover must be of sufficient density to expose less than 30 percent of unstabilized ground within 90 days of planting, and at all times thereafter; OR (3d) Utilize any combination of control actions (3a), (3b), and (3c) such that, in total, these actions apply to all inactive disturbed surface areas.

Table 2 (Continued)

FUGITIVE DUST SOURCE CATEGORY	CONTROL ACTIONS
Unpaved Roads	<p>(4a) Water all roads used for any vehicular traffic at least once per every two hours of active operations [3 times per normal 8 hour work day]; OR</p> <p>(4b) Water all roads used for any vehicular traffic once daily and restrict vehicle speeds to 15 miles per hour; OR</p> <p>(4c) Apply a chemical stabilizer to all unpaved road surfaces in sufficient quantity and frequency to maintain a stabilized surface.</p>
Open storage piles	<p>(5a) Apply chemical stabilizers; OR</p> <p>(5b) Apply water to at least 80 percent of the surface area of all open storage piles on a daily basis when there is evidence of wind driven fugitive dust; OR</p> <p>(5c) Install temporary coverings; OR</p> <p>(5d) Install a three-sided enclosure with walls with no more than 50 percent porosity which extend, at a minimum, to the top of the pile. This option may only be used at aggregate-related plants or at cement manufacturing facilities.</p>
All Categories	<p>(6a) Any other control measures approved by the Executive Officer and the U.S. EPA as equivalent to the methods specified in Table 2 may be used.</p>

**TABLE 3
CONTINGENCY CONTROL MEASURES FOR LARGE OPERATIONS**

FUGITIVE DUST SOURCE CATEGORY	CONTROL MEASURES
Earth-moving	(1A) Cease all active operations; OR (2A) Apply water to soil not more than 15 minutes prior to moving such soil.
Disturbed surface areas	(0B) On the last day of active operations prior to a weekend, holiday, or any other period when active operations will not occur for not more than four consecutive days: apply water with a mixture of chemical stabilizer diluted to not less than 1/20 of the concentration required to maintain a stabilized surface for a period of six months; OR (1B) Apply chemical stabilizers prior to wind event; OR (2B) Apply water to all unstabilized disturbed areas 3 times per day. If there is any evidence of wind driven fugitive dust, watering frequency is increased to a minimum of four times per day; OR (3B) Take the actions specified in Table 2, Item (3c); OR (4B) Utilize any combination of control actions (1B), (2B), and (3B) such that, in total, these actions apply to all disturbed surface areas.
Unpaved roads	(1C) Apply chemical stabilizers prior to wind event; OR (2C) Apply water twice per hour during active operation; OR (3C) Stop all vehicular traffic.
Open storage piles	(1D) Apply water twice per hour; OR (2D) Install temporary coverings.
Paved road track-out	(1E) Cover all haul vehicles; OR (2E) Comply with the vehicle freeboard requirements of Section 23114 of the California Vehicle Code for both public and private roads.
All Categories	(1F) Any other control measures approved by the Executive Officer and the U.S. EPA as equivalent to the methods specified in Table 3 may be used.

RULE 403 - LARGE OPERATION NOTIFICATION
SOUTH COAST AIR QUALITY MANAGEMENT DISTRICT
 21865 Copley Drive, Diamond Bar, CA 91765

Is this plan being submitted to comply with the requirements of a Notice to Comply or Notice of Violation? YES/NO
 Notice Number _____ Please attach copy

Qualifying Criteria:

- Does this operation contain more than 50 acres of disturbed surface area as of the date of submittal? YES/NO
 Please indicate the size of the project _____.
- Will the earth moving operation exceed a daily earth moving or throughput volume of 5,000 cubic yards three times during the most recent 365-day period from the date grading begins? YES/NO

Please Print or Type

Contractor/ Consultant/ Owner: (Circle one of the above)		Phone Number:	
Address:	City:	State:	Zip:
Project Name:			
Nature of Business: <input type="checkbox"/> Construction/Demolition <input type="checkbox"/> Sand & Gravel/Mining Operations <input type="checkbox"/> Cement Manufacturing			
Name of Responsible Person of Organization:			
Title:		Phone Number:	
Environmental Observer:		Phone Number:	
Date Attended Dust Class:		ID Number:	
Project Address: (Attach location map)	City:	State:	Zip:
Name of Property Owner: (If different than above)			
Anticipated Start Date:		Anticipated Completion Date:	
Telephone Number:			
Emergency Phone Number:			
In accordance with subparagraph (f) (1) (a) of Rule 403, I will ensure that the actions specified in tables 1 and 2 will be implemented on-site for each applicable fugitive dust source type within the property lines. Further, I hereby certify that all information contained herein is true and correct.			
SIGNATURE OF RESPONSIBLE MEMBER OF ORGANIZATION	TITLE	DATE	

APPENDIX "B"

Landfill Site Rules

(This page left intentionally blank)

BADLANDS AND LAMB CANYON LANDFILL FACILITIES

OPEN: 6:00 am to 4:30 pm Monday through Saturday

NEXT HOLIDAY CLOSURE:

For services/complaints contact the Riverside County Waste Management Department at (951) 486-3200 or via website www.rivcowm.org

LANDFILL RULES

- Obey County personnel and signs. It is for your safety.
- Anyone under 16 years of age and pets must remain in vehicle.
- High visibility safety vest must be worn at all times.
- Stay within 5 feet of your vehicle while unloading and 15 feet away from heavy equipment.
- No alcohol, drugs, weapons, smoking, salvaging, or loitering.
- Commercial refuse vehicles must have an operational back-up alarm.

STAY ALERT – STAY ALIVE

County is not responsible for damage to customer's vehicle and/or equipment due to customer's negligence or failure to follow site rules and reserves the right to deny access to anyone violating said rules or creating a safety hazard. Landfills are dangerous construction zones. Disposal is at customer's own risk.

ALL LOADS SUBJECT TO INSPECTION

Disposal of hazardous, toxic, flammable, corrosive, explosive and radioactive waste/materials may be prosecuted under Health and Safety Code 25189.5 and Penal Code 374.8

APPENDIX “C”

**Project Drawings
(Reduced Size – 11x17)**

(This page left intentionally blank)

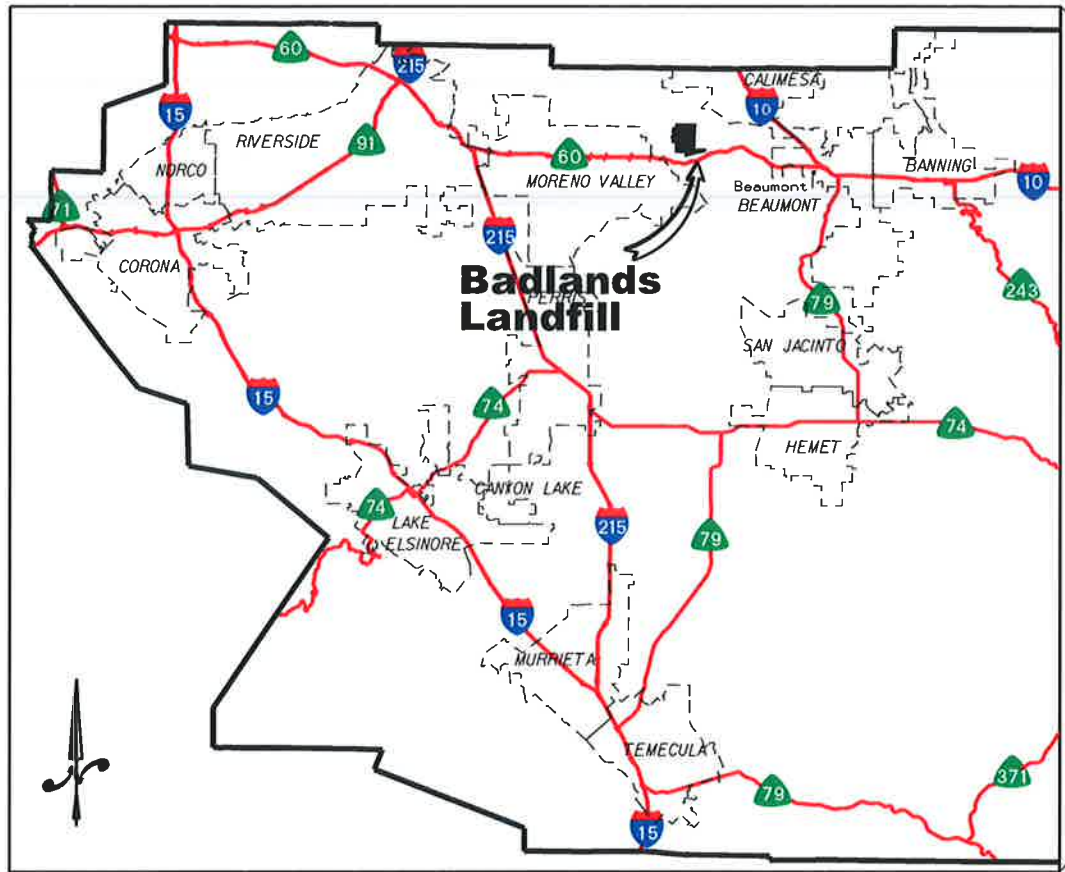
BADLANDS SANITARY LANDFILL

**CONSTRUCTION DRAWINGS
FOR THE
EXCAVATION, HAULING, AND STOCKPILING
OF DAILY COVER MATERIAL**

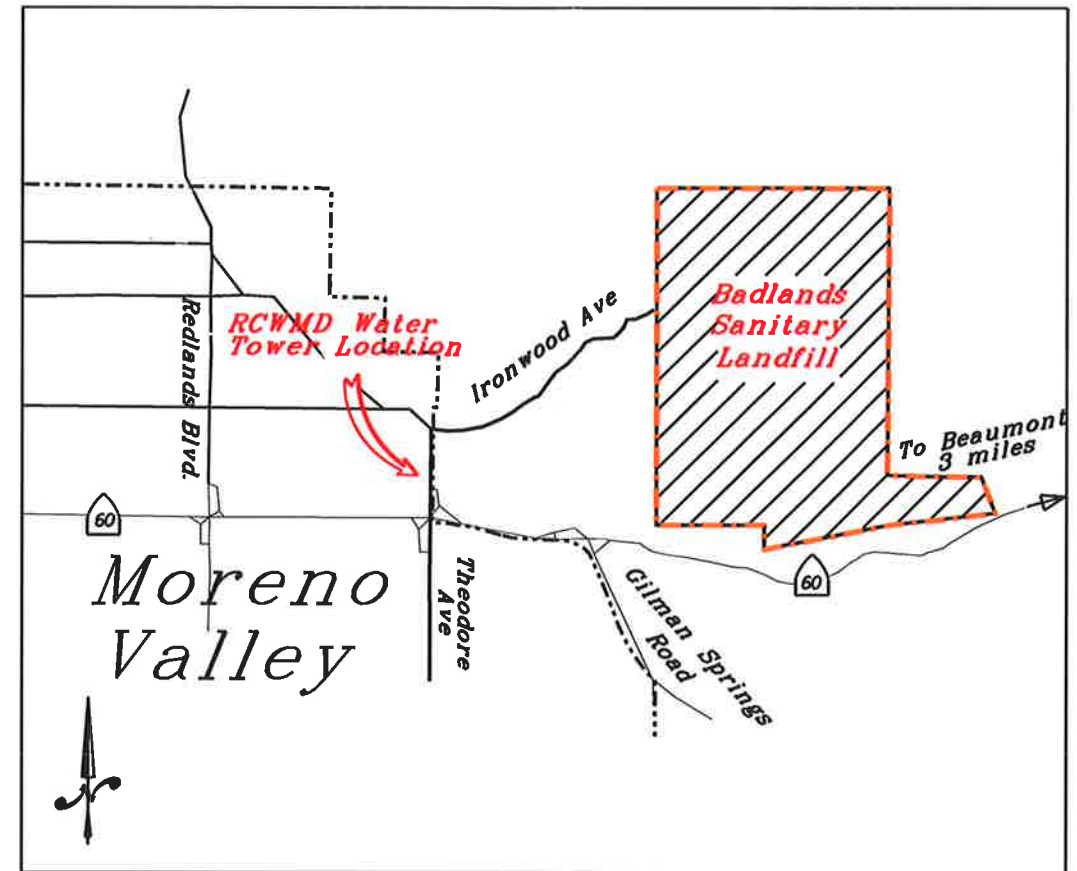
MAY 2016

PREPARED BY
DEPARTMENT OF WASTE RESOURCES
HANS KERNKAMP, GENERAL MANAGER/CHIEF ENGINEER
14310 FREDERICK STREET
MORENO VALLEY, CALIFORNIA 92553
TEL. (951) 486-3200 FAX (951) 486-3205





LOCATION MAP
N.T.S.



VICINITY MAP
N.T.S.

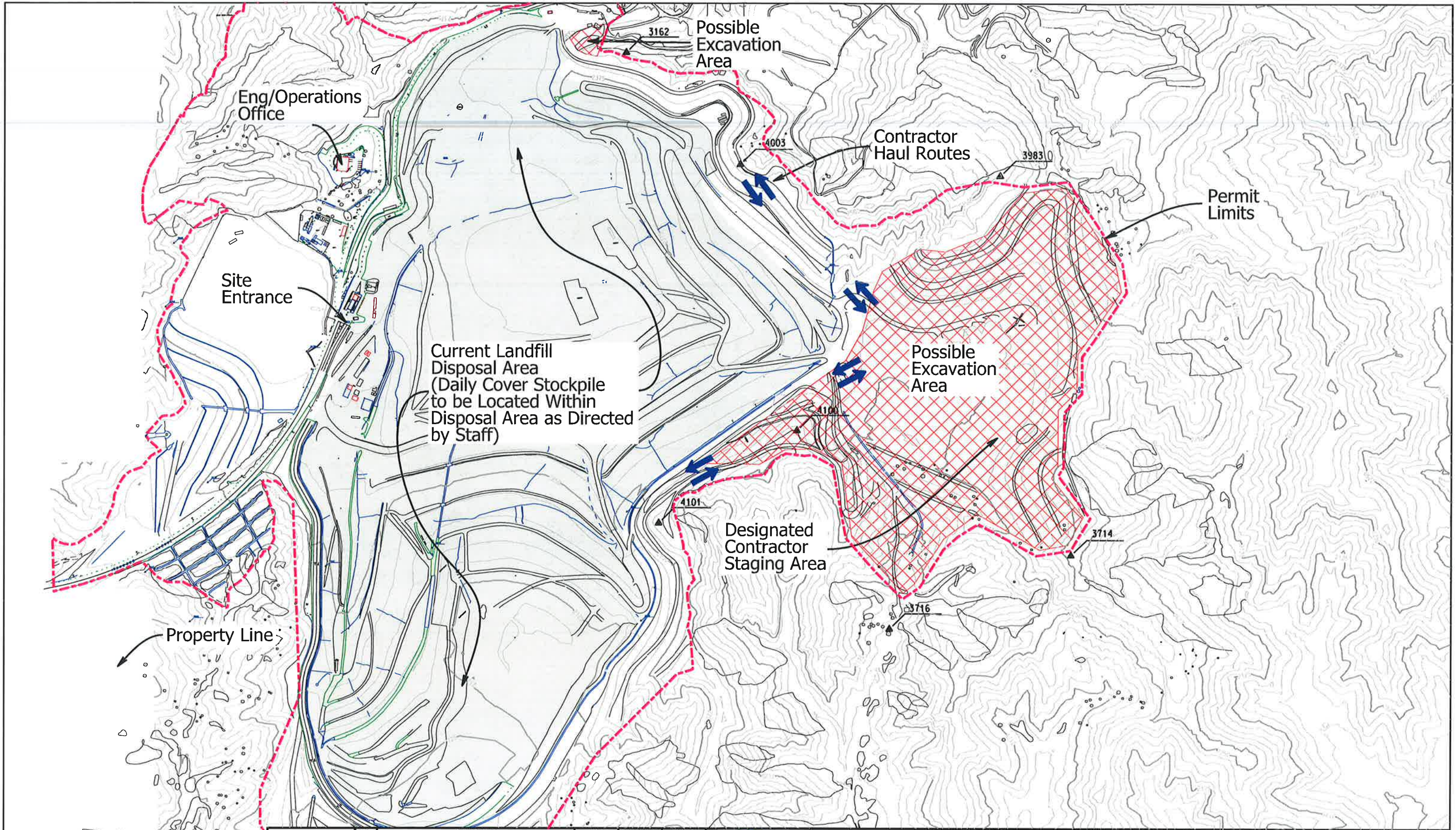
NO.	REVISIONS	BY	APPROVED	DATE



N.T.S.

DESIGNED BY:	
DRAWN BY:	KJ
CHECKED BY:	ACC
DRAWING DATE:	April 2006
TOPO DATE:	
SCALE:	N.T.S.
PATH:	s:\ms\Badlands\ES&P\Projects
PATH:	Dir1 Haul Project\2006 Contract Drawings
PATH/FILE:	Sheet 2 of 4

Badlands Sanitary Landfill
Excavation, Hauling, and
Stockpiling Daily Cover Material
Location and Vicinity Maps



NO.	REVISIONS	BY	APPROVED	DATE

RIVERSIDE COUNTY
 DEPARTMENT OF
WASTE RESOURCES
 Hans Kernkamp, General Manager-Chief Engineer

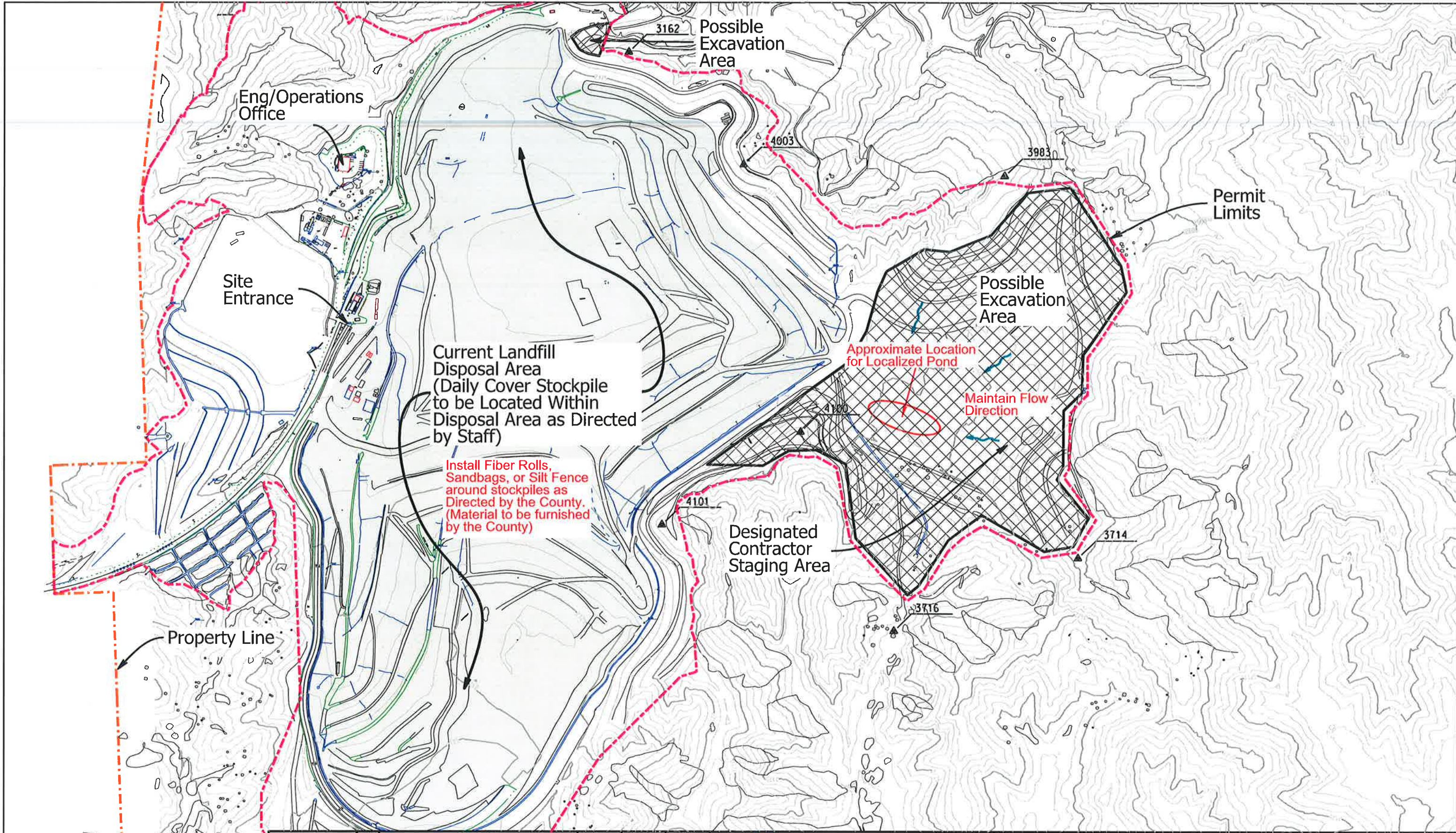
Scale: 1" = 400' (11" = 17')
 Datum is mean sea level.

DESIGNED BY:	KJJ
DRAWN BY:	KJJ
CHECKED BY:	AC
DRAWING DATE:	April 2005
Photo Date:	6/9/2005 (erial) and 4/14/2005 (ground)
SCALE:	1" = 400' (11" = 17')
PATH:	shs/Badlands/600/Projects
PATH:	081 Bad Project / Contract Drawings
PATH/FILE:	Sheet 3 of 4

Badlands Sanitary Landfill
 Excavation, Hauling, and
 Stockpiling Daily Cover Material

Site Map

SHEET 3 OF 4



Current Landfill Disposal Area
(Daily Cover Stockpile to be Located Within Disposal Area as Directed by Staff)

Install Fiber Rolls, Sandbags, or Silt Fence around stockpiles as Directed by the County. (Material to be furnished by the County)

Approximate Location for Localized Pond
Maintain Flow Direction

NO.	REVISIONS	BY	APPROVED	DATE

RIVERSIDE COUNTY
 DEPARTMENT OF
WASTE RESOURCES
 Hans Kernkamp, General Manager-Chief Engineer

1" = 400' (11" = 17')

 0 200 400 600 800 1,000
 Datum to mean sea level.

DESIGNED BY: KJ
 DRAWN BY: KJ
 CHECKED BY: AC
 DRAWING DATE: April 2006
 Photo Date: 6/19/2005 (erial) and 4/14/2006 (ground)
 SCALE: 1" = 400' or 11" = 17'
 PATH: s:\badlands\160a\Projects
 PATH/FILE: 161 final Project / Contract Drawings
 SHEET 4 of 4

Badlands Sanitary Landfill
Excavation, Hauling, and
Stockpiling Daily Cover Material

BMP Site Map

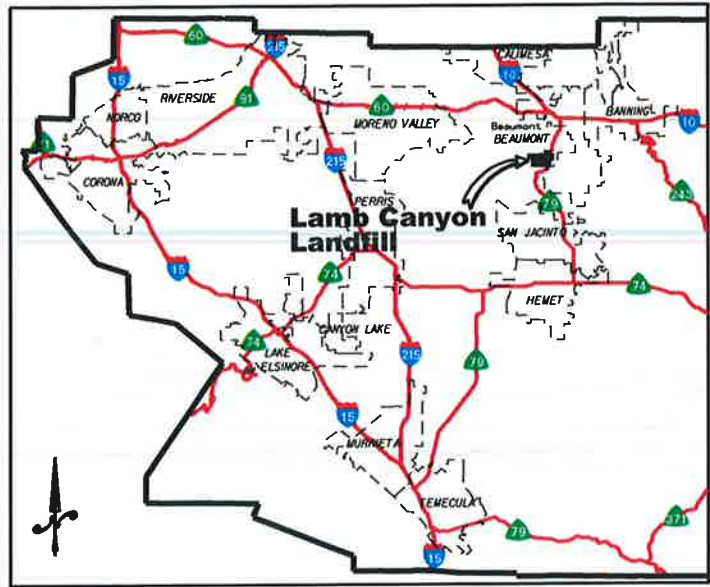
LAMB CANYON SANITARY LANDFILL

CONSTRUCTION DRAWINGS FOR THE EXCAVATION, HAULING, AND STOCKPILING OF DAILY COVER MATERIAL

MAY 2016

PREPARED BY
DEPARTMENT OF WASTE RESOURCES
HANS KERNKAMP, GENERAL MANAGER/CHIEF ENGINEER
14310 FREDERICK STREET
MORENO VALLEY, CALIFORNIA 92553
TEL. (951) 486-3200 FAX (951) 486-3205

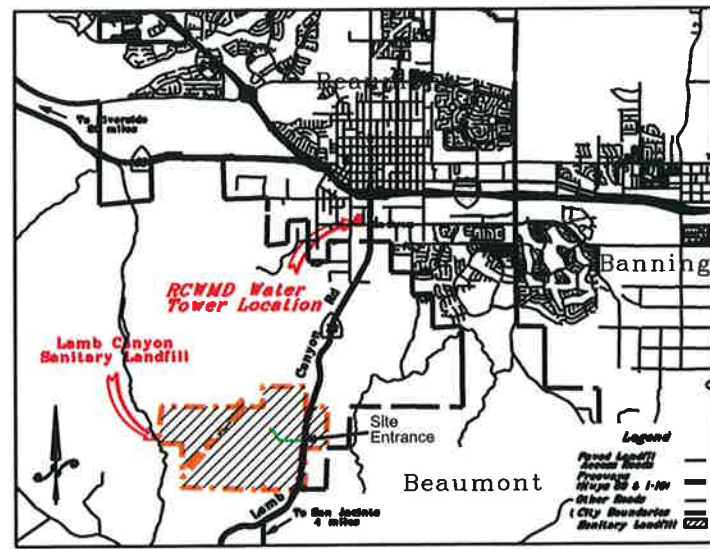




LOCATION MAP
N.T.S.



CALIFORNIA



VICINITY MAP
N.T.S.

FILL PATTERNS

	Asphalt
	Concrete
	Class # Base

LEGEND

- Landfill footprint (unfined)
- Landfill footprint (fined)
- Topo Contours (Jan 2014 & Jan 2015)
- Property line
- Grade break
- Gradient & Direction
- Flow Line / Flow Direction
- Gas probe (protect in place)
- Ground water well (protect in place)
- Existing landfill gas collection system (protect in place)
- Paved Surface
- Slope
- Existing surveying control points (protect in place)
- Existing access road
- Gas line (above ground)
- Gas line (buried)
- Landfill Operations Permit Limit

ABBREVIATIONS

- AB Aggregate Base
- AC Asphalt Concrete
- APPROX. Approximate
- BC Begin Curve
- C Cut
- C or CL Center Line
- CMP Corrugated Metal Pipe
- CO Clean out
- DA Diameter
- E Easting
- EC End Curve
- EL Elevation
- EOP Edge of Pavement
- Exist. Existing
- F Fill
- E or FL Flow Line
- GB Grade Break
- Hor. Horizontal
- HP High Point
- ID Inside Diameter
- Invert
- LF Linear Feet
- L Length
- N Northing
- NAD North American Datum
- NTS Not To Scale
- PI Point of Intersection
- POC Point on Curve
- R or PL Property Line
- PVI Point of Vertical Intersection
- R Radius
- RC Reinforced Concrete
- RCE Registered Civil Engineer
- RCFC Riverside County Flood Control
- STA Station
- TOE Toe of Slope
- TS Top of Slope
- TYP Typical
- Vert. Vertical

INDEX OF DRAWINGS

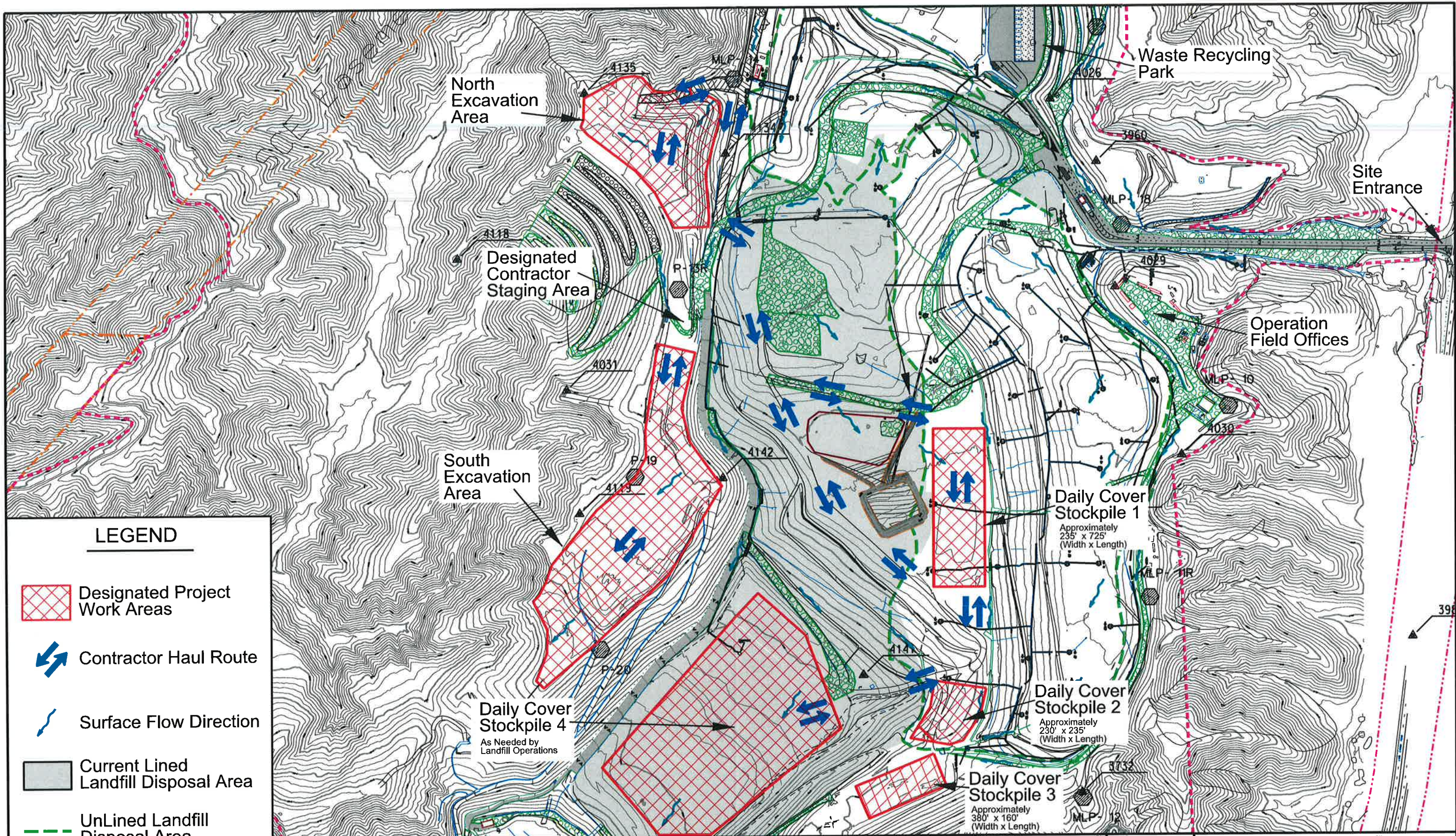
SHEET	FILE NAME	TITLE	SCALE
1	LC Stockpiling Daily Cover S1 Title.dgn	Title Sheet	NTS
2	LC Stockpiling Daily Cover S2 Vicinity.dgn	Index, Legend, & Vicinity Map	NTS
3	LC Stockpiling Daily Cover S3 Map.dgn	Site Map and Project Work Areas	1"=400'
4	LC Stockpiling Daily Cover S4 BMP.dgn	BMP Site Map	1"=400'

NO.	REVISIONS	BY	APPROVED	DATE






Hong Kerrkamp, General Manager / Chief Engineer
NTS

DESIGNED BY:	EC
DRAWN BY:	FB
CHECKED BY:	June 2015
DRAWING DATE:	
TOPO DATE:	
SCALE:	NTS
PATH:	Stockpiling Daily Cover S2 Vicinity.dgn
PATH:	Stockpiling Daily Cover S2 Vicinity.dgn
PATH:	Stockpiling Daily Cover S2 Vicinity.dgn



Lamb Canyon Sanitary Landfill
Excavation, Hauling, and
Stockpiling Daily Cover Material
**Index, Legend, and
Vicinity Map**



LEGEND

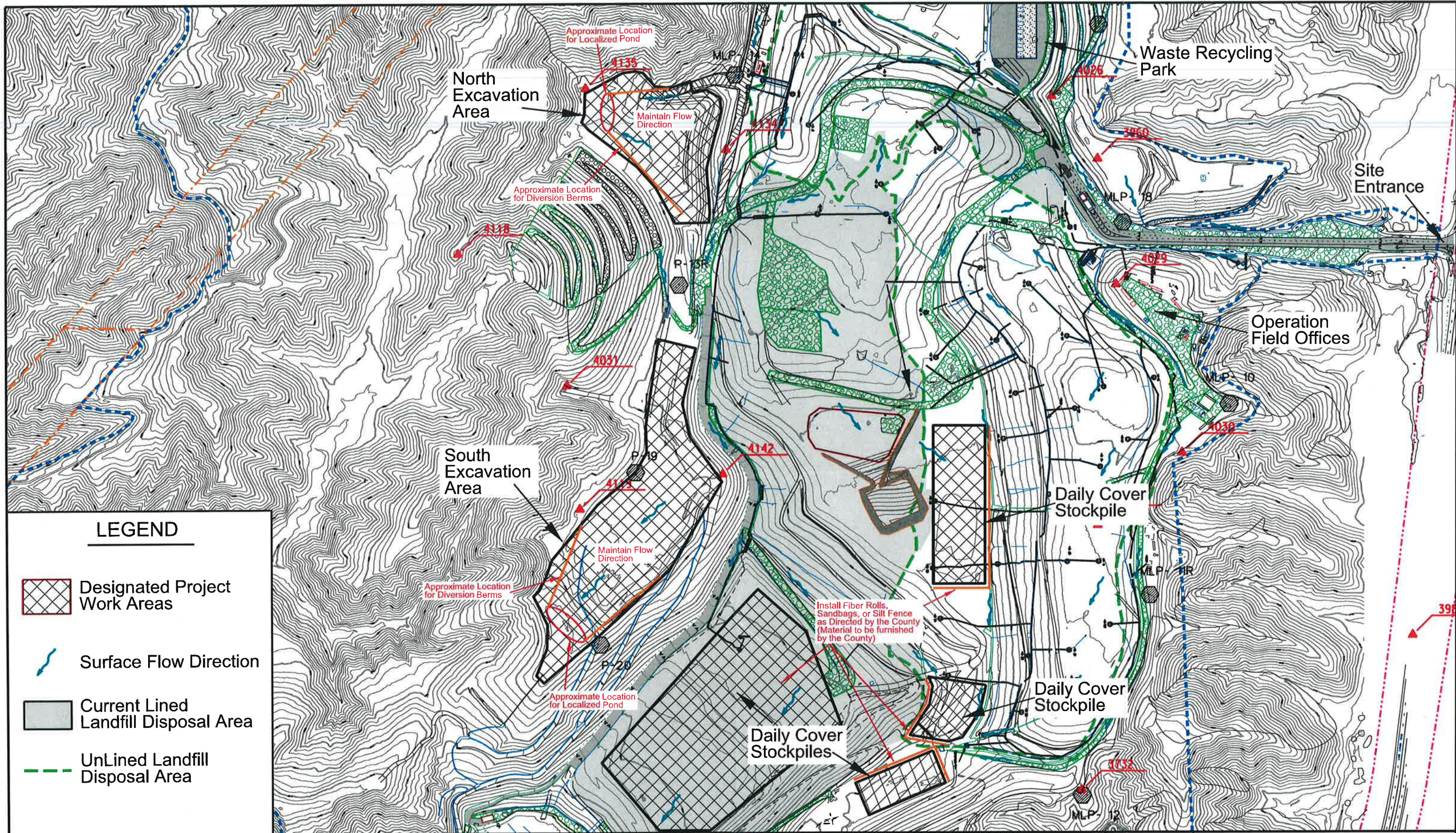
-  Designated Project Work Areas
-  Contractor Haul Route
-  Surface Flow Direction
-  Current Lined Landfill Disposal Area
-  UnLined Landfill Disposal Area

NO.	REVISIONS	BY	APPROVED	DATE






 HONG KERKAMP, General Manager / Chief Engineer
 SCALE: 1" = 400' (11" = 17')

 Datum is mean sea level.

DESIGNED BY:	EC
DRAWN BY:	EC
CHECKED BY:	FB
DRAWING DATE:	May 2006
Photo Date:	10/18/05 and 4/21/2005 (ground)
SCALE:	1" = 400' (11" = 17')
PATH:	T:\Utilities\Spec\Prj\N\Sanita\Haul
PATH:	Stockpile Cover 206 Files\Drawings
PATH/FILE:	LC_Stockpiling Daily Cover S3 Map.dwg


Lamb Canyon Sanitary Landfill
 Excavation, Hauling, and
 Stockpiling Daily Cover Material
 Site Map
 and
 Project Work Areas
 SHEET 3 OF 4

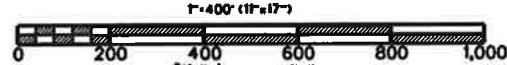


LEGEND

-  Designated Project Work Areas
-  Surface Flow Direction
-  Current Lined Landfill Disposal Area
-  UnLined Landfill Disposal Area

NO.	REVISIONS	BY	APPROVED	DATE


 Inverness County
 DEPARTMENT OF
 WASTE RESOURCES
 Hans Kerrkamp, General Manager / Chief Engineer

1" = 400' (11" = 17')

 Datum is mean sea level.

DESIGNED BY:	EC
DRAWN BY:	EC
CHECKED BY:	FW
DRAWING DATE:	June 2005
Photo Dates/ID/Revision/and 4/28/2005/ground	
SCALE:	1" = 400' (11" = 17')
PATH:	T:\Inverness\Spec\FW\Inverness Head
FILE:	Stockpile Cover 2005 Final Drawings
FILE:	LC Stockpiling Daily Cover SA BMP.dwg

Lamb Canyon Sanitary Landfill
 Excavation, Hauling, and
 Stockpiling Daily Cover Material

BMP Site Map
 SHEET 4 OF 4