

SUBMITTAL TO THE BOARD OF SUPERVISORS
COUNTY OF RIVERSIDE, STATE OF CALIFORNIA



ITEM
1.14
(ID # 4920)

MEETING DATE:

Tuesday, August 29, 2017

FROM : TLMA-PLANNING:

SUBJECT: TRANSPORTATION & LAND MANAGEMENT AGENCY/PLANNING: RECEIVE AND FILE THE PLANNING COMMISSION'S DECISION TO APPROVE THE FIRST EXTENSION OF TIME for TENTATIVE TRACT MAP NO. 31545 – Applicant: United Engineering Group c/o Beau Cooper – Third Supervisorial District – Homeland Zoning Area – Harvest Valley/Winchester Area Plan: Community Development: Medium Density Residential (CD:MDR) - Location: North of Oak Valley Drive, South of Alicante Drive, East of Leon Road, West of Juniper Flats Road – 17.42 Acres – Zoning: Rural Residential (R-R) – APPROVED PROJECT DESCRIPTION: Subdivide 17.42 acres into 55 single family residential lots with a minimum lot size of 7,200 square feet, and two (2) open space lots for a regional trail and water quality basin. [Applicant fees 100%].

RECOMMENDED MOTION: The Planning Department recommends that the Board of Supervisors:

RECEIVE AND FILE the Planning Commission's decision to approve the First Extension of Time for Tentative Tract Map No. 31545. It will now expire on July 17, 2018.

ACTION: Consent

Charissa Leach, Assistant TLMA Director

7/28/2017

MINUTES OF THE BOARD OF SUPERVISORS

On motion of Supervisor Ashley, seconded by Supervisor Jeffries and duly carried, IT WAS ORDERED that the above matter of approval is received and filed as recommended.

Ayes: Jeffries, Washington, Perez and Ashley
Nays: None
Absent: Tavaglione
Date: August 29, 2017
xc: Planning, Applicant

Kecia Harper-Ihem
Clerk of the Board
By:
Deputy

**SUBMITTAL TO THE BOARD OF SUPERVISORS COUNTY OF RIVERSIDE,
STATE OF CALIFORNIA**

FINANCIAL DATA	Current Fiscal Year:	Next Fiscal Year:	Total Cost:	Ongoing Cost
COST	\$ N/A.	\$ N/A.	\$ N/A.	\$ N/A.
NET COUNTY COST	\$ N/A.	\$ N/A.	\$ N/A.	\$ N/A.
SOURCE OF FUNDS: Applicant Fees 100%			Budget Adjustment:	N/A
			For Fiscal Year:	N/A

C.E.O. RECOMMENDATION: Approve

BACKGROUND:

Summary

Tentative Tract Map No. 31545 was originally approved at Planning Commission on May 2, 2007. It proceeded to the Board of Supervisors along with Change of Zone No. 6834 where both applications were approved on July 17, 2007.

The County Planning Department, as part of the review of this Extension of Time request recommends the addition of seven (7) new conditions of approval in order to be able to make a determination that the project does not adversely affect the general health, safety and welfare of the public.

The applicant was informed of these recommended conditions and has agreed to accept them.

The Tentative Tract Map also benefited from Senate Bill No. 1185 (SB1185), Assembly Bill No. 333 (AB333), Assembly Bill No. 208 (AB208), and Assembly Bill No. 116 (AB116), which granted statutory extensions of time for tentative maps statewide.

The Planning Commission heard the First Extension of Time for Tentative Tract Map No. 31545 on June 21, 2017. The Planning Commission approved the project by a 5-0 vote.

Board Action

The Planning Commission's decision is final and no action by the Board of Supervisors is required unless the applicant or an interested person files a complete appeal application within 10 days of this notice appearing on the Board's agenda.

Impact on Citizens and Businesses

The impacts of this project have been evaluated through the environmental review and public hearing process by the Planning Department and the Planning Commission.

Supplemental

Additional Fiscal Information

All fees are paid by the applicant. There is no General Fund obligation.

SUBMITTAL TO THE BOARD OF SUPERVISORS COUNTY OF RIVERSIDE,
STATE OF CALIFORNIA

ATTACHMENTS:

- A. PLANNING COMMISSION MINUTES
- B. PLANNING COMMISSION STAFF REPORT



Tina Grande, Principal Management Analyst

8/7/2017



**PLANNING COMMISSION
MINUTE ORDER
JUNE 7, 2017**

I. AGENDA ITEM 1.7

FIRST EXTENSION OF TIME REQUEST for TENTATIVE TRACT MAP NO. 31545 – Applicant: United Engineering Group c/o Beau Cooper – Third Supervisorial District – Homeland Zoning Area – Harvest Valley/Winchester Area Plan: Community Development: Medium Density Residential (CD-MDR) – Location: Northerly of Oak Valley Drive, southerly of Alicante Drive, easterly of Leon Road, and westerly of Juniper Flats Road – 17.42 Acres – Zoning: Rural Residential (R-R) – Approved Project Description: Subdivide 17.42 acres into 55 single family residential lots with a minimum lot size of 7,200 sq. ft., and two (2) open space lots for a regional trail and water quality basin.

II. PROJECT DESCRIPTION:

First Extension of Time Request for Tentative Tract Map No. 31545, extending the expiration date to July 17, 2018.

III. PLANNING COMMISSION ACTION:


Motion by Commissioner Taylor-Berger, 2nd by Commissioner Hake
A vote of 5-0

APPROVED - First Extension of Time Request for Tentative Tract Map No. 31545, extending the expiration date to July 17, 2018.

1.7

Agenda Item No.
Area Plan: Harvest Valley/Winchester
Zoning Area: Homeland
Supervisory District: Third
Project Planner: Ash Syed
Planning Commission Hearing: June 21, 2017

TENTATIVE TRACT MAP NO. 31545
FIRST EXTENSION OF TIME
Applicant: United Engineering Group
c/o Beau Cooper



Charissa Leach, P.E.
Assistant TLMA Director

COUNTY OF RIVERSIDE PLANNING DEPARTMENT EXTENSION OF TIME STAFF REPORT

The applicant of the subject case has requested an extension of time to allow for the recordation of the final map to subdivide 17.42 acres into 55 single family residential lots with a minimum lot size of 7,200 square feet, and two open space lots for a regional trail and water quality basin.

Unless specifically requested by the applicant, this request will not be discussed at the time it is presented to the Planning Commission as a consent calendar item.

CEQA: The subject case has conformed to the requirements of the California Environmental Quality Act, and all impacts have been analyzed in order to protect the public health, safety and welfare. No new environmental documentation is required prior to the extension of time.

GENERAL PLAN: Unless otherwise noted, the subject case had been determined to be consistent with the General Plan and all of its elements.

REQUEST:

FIRST EXTENSION OF TIME REQUEST for TENTATIVE TRACT MAP NO. 31545

BACKGROUND:

Tentative Tract Map No. 31545 was originally approved at Planning Commission on May 2, 2007. It proceeded to the Board of Supervisors along with Change of Zone No. 6834 where both applications were approved on July 17, 2007.

The County Planning Department, as part of the review of this Extension of Time request recommends the addition of seven (7) new conditions of approval, in order to be able to make a determination that the project does not adversely affect the general health, safety, and welfare of the public.

The applicant was informed of these recommended conditions and has agreed to accept them. Included in this staff report package are the recommended conditions of approval, and the

correspondence from the Extension of Time applicant (dated May 24, 2017) indicating the acceptance of the seven (7) recommended conditions.

FURTHER PLANNING CONSIDERATIONS:

EFFECT OF Senate Bill No. 1185 (SB1185): On July 15, 2008, AB208 was signed into law, which grants a one-time extension of existing subdivision maps so developers can build immediately when the demand for housing goes up. It gives developers an automatic 12 month extension on previously approved subdivision maps set to expire between July 15, 2008 and January 1, 2011.

EFFECT OF Assembly Bill No. 333 (AB333): On July 15, 2009, AB333 was signed into law, which grants a one-time extension of existing subdivision maps so developers can build immediately when the demand for housing goes up. It gives developers an automatic 24 month extension on previously approved subdivision maps set to expire between July 15, 2009 and January 1, 2012.

EFFECT OF Assembly Bill No. 208 (AB208): On July 13, 2011, AB208 was signed into law, which grants a one-time extension of existing subdivision maps so developers can build immediately when the demand for housing goes up. It gives developers an automatic 24 month extension on previously approved subdivision maps set to expire between July 13, 2011 and January 1, 2014.

EFFECT OF Assembly Bill No. 116 (AB116): On July 11, 2013, AB116 was signed into law, which grants a one-time extension of existing subdivision maps so developers can build immediately when the demand for housing goes up. It gives developers an automatic 24 month extension on previously approved subdivision maps set to expire between January 1, 2000 and July 11, 2013.

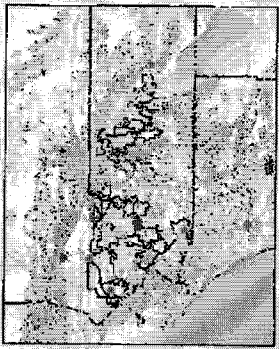
Therefore, upon an approval action by the Planning Commission, subsequent receive and file action by the Board of Supervisors, and the conclusion of the 10-day appeal period, the tentative map's expiration date will become July 17, 2018. If a final map has not been recorded prior this date, a second extension of time request must be filed 180 days prior to map expiration.

RECOMMENDATION:

APPROVAL of the **FIRST EXTENSION OF TIME REQUEST** for **TENTATIVE TRACT MAP NO. 31545**, extending the expiration date and to reflect SB1185, AB333, AB208, and AB116 benefits to July 17, 2018, subject to all the previously approved and amended Conditions of Approval with the applicant's consent.

1st EOT for TR31545

Vicinity Map



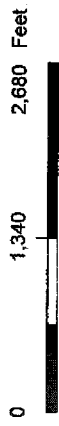
- Legend**
- Display Parcels
 - City Boundaries
 - Cities

Notes

IMPORTANT Maps and data are to be used for reference purposes only. Map features are approximate, and are not necessarily accurate to surveying or engineering standards. The County of Riverside makes no warranty or guarantee as to the content (the source is often third party), accuracy, timeliness, or completeness of any of the data provided, and assumes no legal responsibility for the information contained on this map. Any use of this product with respect to accuracy and precision shall be the sole responsibility of the user.

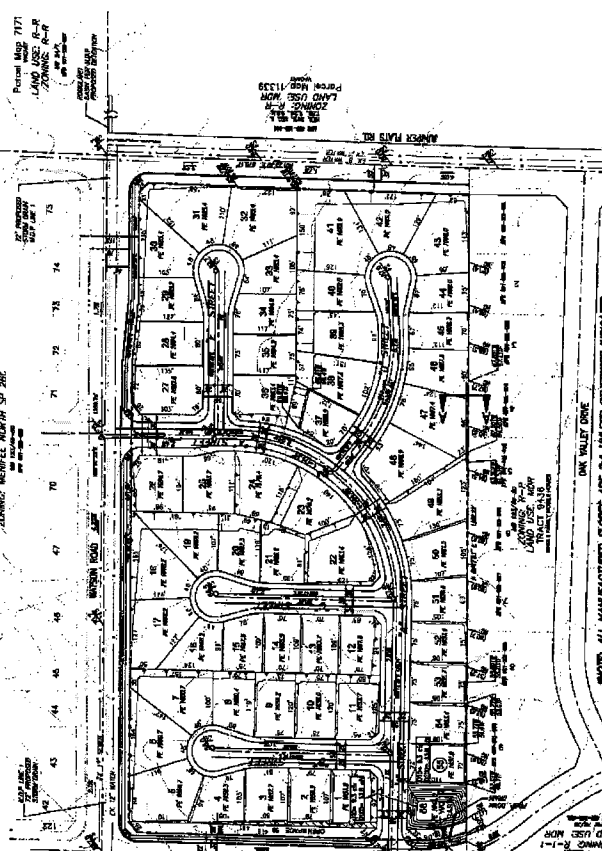
REPORT PRINTED ON... 5/15/2017 1:44:40 PM

© Riverside County RCIT GIS



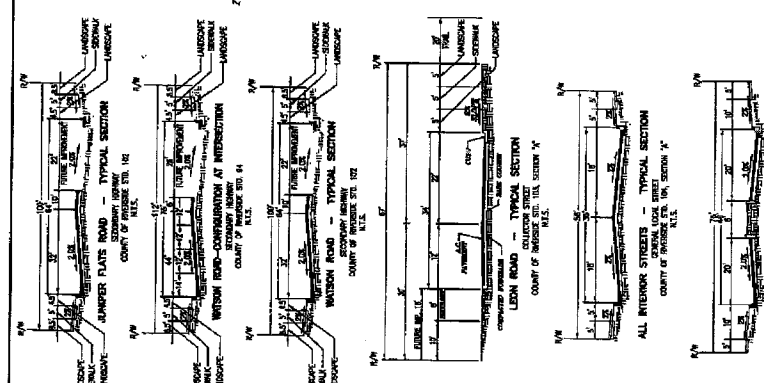
IN THE UNINCORPORATED TERRITORY OF THE COUNTY OF RIVERSIDE, CALIFORNIA
TENTATIVE TRACT NO. 31545
AMENDED MAP NO. 3

PHASE 3 OF PARCEL MAP NO. 00211 IN THE COUNTY OF RIVERSIDE, STATE OF CALIFORNIA,
 SHOWING THE LOTS, STREETS, AND IMPROVEMENTS, RIVERSIDE COUNTY RECORDS
 85 PER MAP RECORDED IN BOOK 17,728, PAGES 74, 82, 83, 84, 85, 86, 87, 88, 89, 90, 91, 92, 93, 94, 95, 96, 97, 98, 99, 100, 101, 102, 103, 104, 105, 106, 107, 108, 109, 110, 111, 112, 113, 114, 115, 116, 117, 118, 119, 120, 121, 122, 123, 124, 125, 126, 127, 128, 129, 130, 131, 132, 133, 134, 135, 136, 137, 138, 139, 140, 141, 142, 143, 144, 145, 146, 147, 148, 149, 150, 151, 152, 153, 154, 155, 156, 157, 158, 159, 160, 161, 162, 163, 164, 165, 166, 167, 168, 169, 170, 171, 172, 173, 174, 175, 176, 177, 178, 179, 180, 181, 182, 183, 184, 185, 186, 187, 188, 189, 190, 191, 192, 193, 194, 195, 196, 197, 198, 199, 200, 201, 202, 203, 204, 205, 206, 207, 208, 209, 210, 211, 212, 213, 214, 215, 216, 217, 218, 219, 220, 221, 222, 223, 224, 225, 226, 227, 228, 229, 230, 231, 232, 233, 234, 235, 236, 237, 238, 239, 240, 241, 242, 243, 244, 245, 246, 247, 248, 249, 250, 251, 252, 253, 254, 255, 256, 257, 258, 259, 260, 261, 262, 263, 264, 265, 266, 267, 268, 269, 270, 271, 272, 273, 274, 275, 276, 277, 278, 279, 280, 281, 282, 283, 284, 285, 286, 287, 288, 289, 290, 291, 292, 293, 294, 295, 296, 297, 298, 299, 300, 301, 302, 303, 304, 305, 306, 307, 308, 309, 310, 311, 312, 313, 314, 315, 316, 317, 318, 319, 320, 321, 322, 323, 324, 325, 326, 327, 328, 329, 330, 331, 332, 333, 334, 335, 336, 337, 338, 339, 340, 341, 342, 343, 344, 345, 346, 347, 348, 349, 350, 351, 352, 353, 354, 355, 356, 357, 358, 359, 360, 361, 362, 363, 364, 365, 366, 367, 368, 369, 370, 371, 372, 373, 374, 375, 376, 377, 378, 379, 380, 381, 382, 383, 384, 385, 386, 387, 388, 389, 390, 391, 392, 393, 394, 395, 396, 397, 398, 399, 400, 401, 402, 403, 404, 405, 406, 407, 408, 409, 410, 411, 412, 413, 414, 415, 416, 417, 418, 419, 420, 421, 422, 423, 424, 425, 426, 427, 428, 429, 430, 431, 432, 433, 434, 435, 436, 437, 438, 439, 440, 441, 442, 443, 444, 445, 446, 447, 448, 449, 450, 451, 452, 453, 454, 455, 456, 457, 458, 459, 460, 461, 462, 463, 464, 465, 466, 467, 468, 469, 470, 471, 472, 473, 474, 475, 476, 477, 478, 479, 480, 481, 482, 483, 484, 485, 486, 487, 488, 489, 490, 491, 492, 493, 494, 495, 496, 497, 498, 499, 500, 501, 502, 503, 504, 505, 506, 507, 508, 509, 510, 511, 512, 513, 514, 515, 516, 517, 518, 519, 520, 521, 522, 523, 524, 525, 526, 527, 528, 529, 530, 531, 532, 533, 534, 535, 536, 537, 538, 539, 540, 541, 542, 543, 544, 545, 546, 547, 548, 549, 550, 551, 552, 553, 554, 555, 556, 557, 558, 559, 560, 561, 562, 563, 564, 565, 566, 567, 568, 569, 570, 571, 572, 573, 574, 575, 576, 577, 578, 579, 580, 581, 582, 583, 584, 585, 586, 587, 588, 589, 590, 591, 592, 593, 594, 595, 596, 597, 598, 599, 600, 601, 602, 603, 604, 605, 606, 607, 608, 609, 610, 611, 612, 613, 614, 615, 616, 617, 618, 619, 620, 621, 622, 623, 624, 625, 626, 627, 628, 629, 630, 631, 632, 633, 634, 635, 636, 637, 638, 639, 640, 641, 642, 643, 644, 645, 646, 647, 648, 649, 650, 651, 652, 653, 654, 655, 656, 657, 658, 659, 660, 661, 662, 663, 664, 665, 666, 667, 668, 669, 670, 671, 672, 673, 674, 675, 676, 677, 678, 679, 680, 681, 682, 683, 684, 685, 686, 687, 688, 689, 690, 691, 692, 693, 694, 695, 696, 697, 698, 699, 700, 701, 702, 703, 704, 705, 706, 707, 708, 709, 710, 711, 712, 713, 714, 715, 716, 717, 718, 719, 720, 721, 722, 723, 724, 725, 726, 727, 728, 729, 730, 731, 732, 733, 734, 735, 736, 737, 738, 739, 740, 741, 742, 743, 744, 745, 746, 747, 748, 749, 750, 751, 752, 753, 754, 755, 756, 757, 758, 759, 760, 761, 762, 763, 764, 765, 766, 767, 768, 769, 770, 771, 772, 773, 774, 775, 776, 777, 778, 779, 780, 781, 782, 783, 784, 785, 786, 787, 788, 789, 790, 791, 792, 793, 794, 795, 796, 797, 798, 799, 800, 801, 802, 803, 804, 805, 806, 807, 808, 809, 810, 811, 812, 813, 814, 815, 816, 817, 818, 819, 820, 821, 822, 823, 824, 825, 826, 827, 828, 829, 830, 831, 832, 833, 834, 835, 836, 837, 838, 839, 840, 841, 842, 843, 844, 845, 846, 847, 848, 849, 850, 851, 852, 853, 854, 855, 856, 857, 858, 859, 860, 861, 862, 863, 864, 865, 866, 867, 868, 869, 870, 871, 872, 873, 874, 875, 876, 877, 878, 879, 880, 881, 882, 883, 884, 885, 886, 887, 888, 889, 890, 891, 892, 893, 894, 895, 896, 897, 898, 899, 900, 901, 902, 903, 904, 905, 906, 907, 908, 909, 910, 911, 912, 913, 914, 915, 916, 917, 918, 919, 920, 921, 922, 923, 924, 925, 926, 927, 928, 929, 930, 931, 932, 933, 934, 935, 936, 937, 938, 939, 940, 941, 942, 943, 944, 945, 946, 947, 948, 949, 950, 951, 952, 953, 954, 955, 956, 957, 958, 959, 960, 961, 962, 963, 964, 965, 966, 967, 968, 969, 970, 971, 972, 973, 974, 975, 976, 977, 978, 979, 980, 981, 982, 983, 984, 985, 986, 987, 988, 989, 990, 991, 992, 993, 994, 995, 996, 997, 998, 999, 1000



SECTION	LOT NO.	ACRES	AREA (SQ FT)	PERMITS	REMARKS
1	1	0.12	3,267	1	
1	2	0.12	3,267	1	
1	3	0.12	3,267	1	
1	4	0.12	3,267	1	
1	5	0.12	3,267	1	
1	6	0.12	3,267	1	
1	7	0.12	3,267	1	
1	8	0.12	3,267	1	
1	9	0.12	3,267	1	
1	10	0.12	3,267	1	
1	11	0.12	3,267	1	
1	12	0.12	3,267	1	
1	13	0.12	3,267	1	
1	14	0.12	3,267	1	
1	15	0.12	3,267	1	
1	16	0.12	3,267	1	
1	17	0.12	3,267	1	
1	18	0.12	3,267	1	
1	19	0.12	3,267	1	
1	20	0.12	3,267	1	
1	21	0.12	3,267	1	
1	22	0.12	3,267	1	
1	23	0.12	3,267	1	
1	24	0.12	3,267	1	
1	25	0.12	3,267	1	
1	26	0.12	3,267	1	
1	27	0.12	3,267	1	
1	28	0.12	3,267	1	
1	29	0.12	3,267	1	
1	30	0.12	3,267	1	
1	31	0.12	3,267	1	
1	32	0.12	3,267	1	
1	33	0.12	3,267	1	
1	34	0.12	3,267	1	
1	35	0.12	3,267	1	
1	36	0.12	3,267	1	
1	37	0.12	3,267	1	
1	38	0.12	3,267	1	
1	39	0.12	3,267	1	
1	40	0.12	3,267	1	
1	41	0.12	3,267	1	
1	42	0.12	3,267	1	
1	43	0.12	3,267	1	
1	44	0.12	3,267	1	
1	45	0.12	3,267	1	
1	46	0.12	3,267	1	
1	47	0.12	3,267	1	
1	48	0.12	3,267	1	
1	49	0.12	3,267	1	
1	50	0.12	3,267	1	
1	51	0.12	3,267	1	
1	52	0.12	3,267	1	
1	53	0.12	3,267	1	
1	54	0.12	3,267	1	
1	55	0.12	3,267	1	
1	56	0.12	3,267	1	
1	57	0.12	3,267	1	
1	58	0.12	3,267	1	
1	59	0.12	3,267	1	
1	60	0.12	3,267	1	
1	61	0.12	3,267	1	
1	62	0.12	3,267	1	
1	63	0.12	3,267	1	
1	64	0.12	3,267	1	
1	65	0.12	3,267	1	
1	66	0.12	3,267	1	
1	67	0.12	3,267	1	
1	68	0.12	3,267	1	
1	69	0.12	3,267	1	
1	70	0.12	3,267	1	
1	71	0.12	3,267	1	
1	72	0.12	3,267	1	
1	73	0.12	3,267	1	
1	74	0.12	3,267	1	
1	75	0.12	3,267	1	
1	76	0.12	3,267	1	
1	77	0.12	3,267	1	
1	78	0.12	3,267	1	
1	79	0.12	3,267	1	
1	80	0.12	3,267	1	
1	81	0.12	3,267	1	
1	82	0.12	3,267	1	
1	83	0.12	3,267	1	
1	84	0.12	3,267	1	
1	85	0.12	3,267	1	
1	86	0.12	3,267	1	
1	87	0.12	3,267	1	
1	88	0.12	3,267	1	
1	89	0.12	3,267	1	
1	90	0.12	3,267	1	
1	91	0.12	3,267	1	
1	92	0.12	3,267	1	
1	93	0.12	3,267	1	
1	94	0.12	3,267	1	
1	95	0.12	3,267	1	
1	96	0.12	3,267	1	
1	97	0.12	3,267	1	
1	98	0.12	3,267	1	
1	99	0.12	3,267	1	
1	100	0.12	3,267	1	

HIGHWAY 79 POLICY AREA
 LOTS PER HIGHWAY 79 POLICY = 55
 YIELDS 15% REDUCTION



OWNER:
 H&M INVESTMENTS LLC
 475 E. WASHINGTON STREET
 SUITE 200
 RIVERSIDE, CA 92501

APPROXIMATE PREPARED BY:
 P. S. OSMAS
 2810 JACO AVENUE, SUITE 101
 RIVERSIDE, CA 92507
 (951) 682-3379

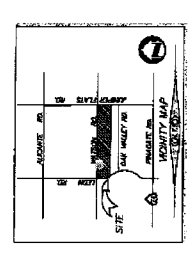
APPROVED BY:
 JAMES H. HARRIS
 COUNTY ENGINEER
 RIVERSIDE COUNTY
 100 WEST 9TH STREET, SUITE 100
 RIVERSIDE, CA 92501

UTILITY EXEMPTIONS:
 WATER: LAKEN MUNICIPAL WATER DISTRICT
 SEWER: SOUTHERN CALIFORNIA GAS COMPANY
 TELEPHONE: SOUTHERN CALIFORNIA GAS COMPANY
 SCHOOLS: RIVERSIDE COUNTY SCHOOLS (ELEMENTARY)
 RIVERSIDE COUNTY SCHOOLS (JUNIOR HIGH)

ZONING/LAND USE:
 ZONING: R-1
 LAND USE: SINGLE-FAMILY RESIDENTIAL
 PROPOSED LAND USE: SINGLE-FAMILY RESIDENTIAL
 TOTAL LOTS: 100
 TOTAL ACRES: 12.20

PROJECT NOTES:
 1. TOTAL PROJECT SIZE: 12.20 ACRES CONDS.
 2. THIS MAP IS A SUBDIVISION OF THE PROJECT.
 3. THE LOTS SHOWN ON THIS MAP ARE TO BE USED FOR SINGLE-FAMILY RESIDENTIAL PURPOSES.
 4. THE LOTS SHOWN ON THIS MAP ARE TO BE USED FOR SINGLE-FAMILY RESIDENTIAL PURPOSES.
 5. THE LOTS SHOWN ON THIS MAP ARE TO BE USED FOR SINGLE-FAMILY RESIDENTIAL PURPOSES.
 6. THE LOTS SHOWN ON THIS MAP ARE TO BE USED FOR SINGLE-FAMILY RESIDENTIAL PURPOSES.
 7. THE LOTS SHOWN ON THIS MAP ARE TO BE USED FOR SINGLE-FAMILY RESIDENTIAL PURPOSES.
 8. THE LOTS SHOWN ON THIS MAP ARE TO BE USED FOR SINGLE-FAMILY RESIDENTIAL PURPOSES.
 9. THE LOTS SHOWN ON THIS MAP ARE TO BE USED FOR SINGLE-FAMILY RESIDENTIAL PURPOSES.
 10. THE LOTS SHOWN ON THIS MAP ARE TO BE USED FOR SINGLE-FAMILY RESIDENTIAL PURPOSES.

NOTES:
 1. ALL MANUFACTURED HOMES ARE 2 1/2 UNLESS OTHERWISE INDICATED.
 2. THE LOTS SHOWN ON THIS MAP ARE TO BE USED FOR SINGLE-FAMILY RESIDENTIAL PURPOSES.



SECTION	LOT NO.	ACRES	AREA (SQ FT)	PERMITS	REMARKS
1	1	0.12	3,267	1	
1	2	0.12	3,267	1	
1	3	0.12	3,267	1	
1	4	0.12	3,267	1	
1	5	0.12	3,267	1	
1	6	0.12	3,267	1	
1	7	0.12	3,267	1	
1	8	0.12	3,267	1	
1	9	0.12	3,267	1	
1	10	0.12	3,267	1	
1	11	0.12	3,267	1	
1	12	0.12	3,267	1	
1	13	0.12	3,267	1	
1	14	0.12	3,267	1	
1	15	0.12	3,267	1	
1	16	0.12	3,267	1	
1	17	0.12	3,267	1	
1	18	0.12	3,267	1	
1	19	0.12	3,267	1	
1	20	0.12	3,267	1	
1	21	0.12	3,267	1	
1	22	0.12	3,267	1	
1	23	0.12	3,267	1	
1	24	0.12	3,267	1	
1	25	0.12	3,267	1	
1	26	0.12	3,267	1	
1	27	0.12	3,267	1	
1	28	0.12	3,267	1	
1	29	0.12	3,267	1	
1	30	0.12	3,267	1	
1	31	0.12	3,267</		

Extension of Time Environmental Determination

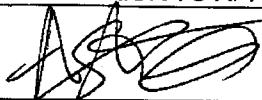
Project Case Number: TR31545
 Original E.A. Number: EA39130
 Extension of Time No.: First
 Original Approval Date: July 17, 2007

Project Location: North of Carmen Avenue, South of Aloma Drive, East of Orange Street, West of Broadway Street.

Project Description: Subdivision of 17.42 acres into 55 single family residential lots with a minimum lot size of 7,200 square feet, and two open space lots for a regional trail and water quality basin.

On July 17, 2007, this Tentative Tract Map and its original environmental assessment/environmental impact report was reviewed to determine: 1) whether any significant or potentially significant changes in the original proposal have occurred; 2) whether its environmental conditions or circumstances affecting the proposed development have changed. As a result of this evaluation, the following determination has been made:

<input type="checkbox"/>	I find that although the proposed project could have a significant effect on the environment, NO NEW ENVIRONMENTAL DOCUMENTATION IS REQUIRED PRIOR TO APPROVAL OF THE EXTENSION OF TIME, because all potentially significant effects (a) have been adequately analyzed in an earlier EIR or Negative Declaration pursuant to applicable legal standards and (b) have been avoided or mitigated pursuant to that earlier EIR or Negative Declaration and the project's original conditions of approval.
<input checked="" type="checkbox"/>	I find that although the proposed project could have a significant effect on the environment, and there are one or more potentially significant environmental changes or other changes to the circumstances under which the project is undertaken, NO NEW ENVIRONMENTAL DOCUMENTATION IS REQUIRED PRIOR TO APPROVAL OF THE EXTENSION OF TIME, because all potentially significant effects (a) have been adequately analyzed in an earlier EIR or Negative Declaration pursuant to applicable legal standards and (b) have been avoided or mitigated pursuant to that earlier EIR or Negative Declaration and revisions to the project's original conditions of approval which have been made and agreed to by the project proponent.
<input type="checkbox"/>	I find that there are one or more potentially significant environmental changes or other changes to the circumstances under which the project is undertaken, which the project's original conditions of approval may not address, and for which additional required mitigation measures and/or conditions of approval cannot be determined at this time. Therefore, AN ENVIRONMENTAL ASSESSMENT/INITIAL STUDY IS REQUIRED in order to determine what additional mitigation measures and/or conditions of approval, if any, may be needed, and whether or not at least one of the conditions described in California Code of Regulations, Section 15162 (necessitating a Supplemental or Subsequent E.I.R.) exist. Additionally, the environmental assessment/initial study shall be used to determine WHETHER OR NOT THE EXTENSION OF TIME SHOULD BE RECOMMENDED FOR APPROVAL.
<input type="checkbox"/>	I find that the original project was determined to be exempt from CEQA, and the proposed project will not have a significant effect on the environment, therefore NO NEW ENVIRONMENTAL DOCUMENTATION IS REQUIRED PRIOR TO APPROVAL OF THE EXTENSION OF TIME.

Signature: 
 Ash Syed, Planner

Date: May 25, 2017
 For Charissa Leach, Assistant TLMA Director

Wheeler, Timothy

From: Beau Cooper <bcooper@unitedeng.com>
Sent: Wednesday, May 24, 2017 5:08 PM
To: Syed, Ashiq
Subject: RE: Recommended Conditions of Approval for 1st EOT of TR31545

Ash,

I have reviewed the additional conditions of approval for TR31545 and TR31546 with the client and we have no objections. Please proceed with the staff report and let me know when these Tracts are scheduled for hearing.

Thanks again,

Beau D. Cooper
Entitlement Manager

WE'VE MOVED!!! PLEASE NOTE OUR NEW ADDRESS



8885 Haven Avenue | Suite 195 | Rancho Cucamonga, California 91730
909.466.9240 x203 | 909.292.6677 cell
www.unitedeng.com | bcooper@unitedeng.com

From: Syed, Ashiq [mailto:ASyed@rivco.org]
Sent: Wednesday, May 24, 2017 10:33 AM
To: Beau Cooper <bcooper@unitedeng.com>
Subject: Recommended Conditions of Approval for 1st EOT of TR31545

Mr. Cooper,

Attached is the recommended Conditions of Approval (COA) for TR31545.

Attn: Beau Cooper
8885 Haven Avenue, Suite 195
Rancho Cucamonga, CA 91730

RE: FIRST EXTENSION OF TIME REQUEST for TENTATIVE TRACT MAP No. 31545.

The County Planning Department has determined it necessary to recommend the addition of seven (7) new conditions of approval in order to be able to make a determination that the project does not adversely affect the general health, safety and welfare of the public.

Please review the proposed conditions of approval attached in this correspondence. If these conditions are acceptable, then submit a short written letter/memo/email that clearly references this case, the acceptance of each condition by name and number, and clearly state that you, the Extension of Time Applicant, accept these conditions. This documentation will then be included in the staff report package. The attached document is a copy of the recommended conditions which are identified as follows:

50. E HEALTH. 4

- 50. TRANS. 41
- 60. BS GRADE. 14
- 60. TRANS. 1
- 80. TRANS. 4
- 90. BS GRADE. 3
- 90. TRANS. 8

If the addition of the conditions is not acceptable, please notify me so we can discuss your concerns. If the issue cannot be resolved, then I will direct you to contact the individual Department representative to discuss this matter further.

Once the conditions have been accepted, I will begin preparing the staff report package for a Planning Commission hearing as a consent item. County Ordinance requires that conditions added thru the extension of time process are presented to and accepted by the applicant. If you, the EOT applicant, is unable to accept these conditions, the Planning Department will recommend denial of this extension of time request. An opportunity will, if requested, be provided for arguments to be made to the hearing body justifying why this request should be approved without the recommended conditions of approval.

I am eager to move this case forward and continue the extension of time process. If you have not contacted me within thirty (30) days, I will begin preparing this case with a recommendation of denial. I need one of two items to proceed:

- 1) Correspondence from you, the EOT applicant, accepting the recommended conditions per the directions provided above; or,
- 2) Correspondence from you, the EOT applicant, advising me of the concerns with the recommended conditions. If the concern still exists after our discussion, then direction on how to approach the issue will be given and additional time will be provided until the issue is resolved.

If you have any questions, comments, or concerns regarding this email, please feel free to contact me as indicated below.



RIVERSIDE COUNTY
PLANNING DEPARTMENT

Ash Syed – Contract Planner

4080 Lemon Street, 12th Floor

Riverside, CA 92501

Email: asyed@rivco.org

Phone: 951-955-6035

Confidentiality Disclaimer

This email is confidential and intended solely for the use of the individual(s) to whom it is addressed. The information contained in this message may be privileged and confidential and protected from disclosure. If you are not the author's intended recipient, be advised that you have received this email in error and that any use, dissemination, forwarding, printing, or copying of this email is strictly prohibited. If you have received this email in error please delete all copies, both electronic and printed, and contact the author immediately.

County of Riverside California

05/30/17
16:40

Riverside County LMS
CONDITIONS OF APPROVAL

Page: 1

TRACT MAP Tract #: TR31545

Parcel: 457-130-018

50. PRIOR TO MAP RECORDATION

E HEALTH DEPARTMENT

50.E HEALTH. 4 EOT1 - REQ E HEALTH DOCUMENTS

RECOMMND

Prior to map recordation, provide the following documents to the Riverside County Environmental Health Department:

1. Provide documentation from an approved waste hauler in regards to solid waste service. Please call (951)955-8980 for additional details.
2. Provide written clearance from DEH Environmental Cleanup Programs. Please note that an Environmental Site Assessment, Phase 1 study may be required at their discretion. For further information, please contact (951) 955-8982.

(This Extension of Time condition may be considered "Met" if it duplicates another similar condition issued by this department)

TRANS DEPARTMENT

50.TRANS. 41 EOT1 - FINAL ACCESS AND MAINT

RECOMMND

Prior to the map recordation, the applicant shall submit a Water Quality Management Plan (WQMP) subject to the State Regional Water Quality Board Order No. (See watershed below) to Transportation Department for review and approval. However, the applicant may be required to comply with the latest version of the WQMP manual if required by the State Regional Water Quality Board. All water quality features shall be included on the grading plan. WQMP applicability checklist, templates, LID design requirements, and guidance can be found on-line at: www.rcflood.org/npdes. For any questions, please contact (951) 712-5494.

Watersheds: Santa Ana No. R8-2013-0024 / Santa Margarita No. R9-2010-0016 / Whitewater No. R7-2013-0011

Additionally, prior to the map recordation, the applicant shall ensure that BMP facilities are placed in dedicated easements and that sufficient legal access to the BMPs are provided. This requirement is for both onsite and offsite property.

(This Extension of Time condition may be considered "Met"

05/30/17
16:40

Riverside County LMS
CONDITIONS OF APPROVAL

Page: 2

TRACT MAP Tract #: TR31545

Parcel: 457-130-018

50. PRIOR TO MAP RECORDATION

50.TRANS. 41 EOT1 - FINAL ACCESS AND MAINT (cont.) RECOMMND

if it duplicates another similar condition issued by this department)

60. PRIOR TO GRADING PRMT ISSUANCE

BS GRADE DEPARTMENT

60.BS GRADE. 14 EOT1 - REQ BMP SWPPP WQMP RECOMMND

Prior to the issuance of a grading permit, the owner / applicant shall obtain a BMP (Best Management Practices) Permit for the monitoring of the erosion and sediment control BMPs for the site. The Department of Building and Safety will conduct NPDES (National Pollutant Discharge Elimination System) inspections of the site based on Risk Level to verify compliance with the Construction General Permit, Stormwater ordinances and regulations until completion of the construction activities, permanent stabilization of the site and permit final.

Grading and construction sites of "ONE" acre or larger required to develop a STORM WATER POLLUTION PREVENTION PLAN (SWPPP) - the owner/applicant shall submit the SWPPP to the Building and Safety Department Environmental Compliance Division for review and approval prior to issuance of a grading permit.

If a Water Quality Management Plan (WQMP) is required, the owner / applicant shall submit to the Building & Safety Department, the approved project - specific Water Quality Management Plan (WQMP) and ensure that all approved water quality treatment control BMPs have been included on the grading plan.

(This Extension of Time condition may be considered "Met" if it duplicates another similar condition issued by this department)

TRANS DEPARTMENT

60.TRANS. 1 EOT1 - FINAL WQMP FOR GRADING RECOMMND

This condition would apply when grading occurs before map recordation. Prior to the issuance of a grading permit, the applicant shall submit a Water Quality Management Plan (WQMP) subject to the State Regional Water Quality Board

05/30/17
16:40

Riverside County LMS
CONDITIONS OF APPROVAL

Page: 3

TRACT MAP Tract #: TR31545

Parcel: 457-130-018

60. PRIOR TO GRADING PRMT ISSUANCE

60.TRANS. 1 EOT1 - FINAL WQMP FOR GRADING (cont.) RECOMMND

Order No. (See watershed below) to Transportation Department for review and approval. However, the applicant may be required to comply with the latest version of the WQMP manual if required by the State Regional Water Quality Board. All water quality features shall be included on the grading plan. WQMP applicability checklist, templates, LID design requirements, and guidance can be found on-line at: www.rcflood.org/npdes. For any questions, please contact (951) 712-5494.

Watersheds: Santa Ana No. R8-2013-0024 / Santa Margarita No. R9-2010-0016 / Whitewater No. R7-2013-0011

(This Extension of Time condition may be considered "Met" if it duplicates another similar condition issued by this department)

80. PRIOR TO BLDG PRMT ISSUANCE

TRANS DEPARTMENT

80.TRANS. 4 EOT1 -WQMP AND MAINTENANCE RECOMMND

The project shall begin constructing and installing the BMP facilities described in the approved Final WQMP. The project shall be responsible for performing all activities described in the WQMP and that copies of the approved Final WQMP are available for the future owners/occupants.

A maintenance plan and signed maintenance agreement shall be submitted to the Transportation Department for review and approval prior to issuance of occupancy permits. A maintenance organization will be established with a funding source for the permanent maintenance. The maintenance plan shall require that all BMP facilities are inspected, if required, cleaned no later than October 15 each year.

(This Extension of Time condition may be considered "Met" if it duplicates another similar condition issued by this department)

05/30/17
16:40

Riverside County LMS
CONDITIONS OF APPROVAL

Page: 4

TRACT MAP Tract #: TR31545

Parcel: 457-130-018

90. PRIOR TO BLDG FINAL INSPECTION

BS GRADE DEPARTMENT

90.BS GRADE. 3 EOT1 - WQMP REQUIRED

RECOMMND

Prior to final building inspection, the applicant shall comply with the following:

1. Obtain inspection of all treatment control BMPs and/or clearance from the Building and Safety Department. All structural BMPs described in the project - specific WQMP and indicated on the approved grading plan shall be constructed and installed in conformance with the approved plans and specifications.
2. The applicant/owner shall submit a "Wet Signed" copy of the Water Quality Management Plan (WQMP) Certification from a Registered Civil Engineer certifying that the project - specific WQMP treatment control BMPs have been installed in accordance with the approved WQMP.
3. The applicant/owner shall provide the Department of Building Safety with GPS coordinates for the location of the project - specific WQMP treatment control BMPs.
4. The applicant/owner shall register the project - specific WQMP treatment control BMPs with the Department of Building Safety Business Registration Division. Any person or entity that owns or operates a commercial and/or industrial facility shall register such facility for annual inspections.
5. The applicant shall make payment to the Building and Safety Department for the Water Quality Management Plan (WQMP) Annual Inspection.

(This Extension of Time condition may be considered "Met" if it duplicates another similar condition issued by this department)

TRANS DEPARTMENT

90.TRANS. 8 EOT1 - WQMP COMP AND BNS REG

RECOMMND

Prior to Building Final Inspection, the applicant will be required to hand out educational materials regarding water quality, provide a engineered WQMP certification, inspection of BMPs, GPS location of BMPs, and ensure that the requirements for inspection and cleaning the BMPs are

05/30/17
16:40

Riverside County LMS
CONDITIONS OF APPROVAL

Page: 5

TRACT MAP Tract #: TR31545

Parcel: 457-130-018

90. PRIOR TO BLDG FINAL INSPECTION

90.TRANS. 8

EOT1 - WQMP COMP AND BNS REG (cont.)

RECOMMND

established. Additionally, the applicant will be required to register BMPs with the Transportation Department's Business Registration Division.

(This Extension of Time condition may be considered "Met" if it duplicates another similar condition issued by this department)