

**SUBMITTAL TO THE BOARD OF SUPERVISORS  
COUNTY OF RIVERSIDE, STATE OF CALIFORNIA**



ITEM  
2.8  
(ID # 6212)

**MEETING DATE:**

Tuesday, February 27, 2018

**FROM :** OFFICE ON AGING:

**SUBJECT:** OFFICE ON AGING: Riverside County Advisory Council on Aging Annual Report for 2016-2017. [District: All]; [Total cost \$0]

**RECOMMENDED MOTION:** That the Board of Supervisors receive and file the Riverside County Advisory Council on Aging Annual Report for 2016-2017.

**ACTION:** Consent

---

**MINUTES OF THE BOARD OF SUPERVISORS**

On motion of Supervisor Jeffries, seconded by Supervisor Ashley and duly carried by unanimous vote, IT WAS ORDERED that the above matter is received and filed as recommended.

Ayes: Jeffries, Tavaglione, Washington, Perez and Ashley  
Nays: None  
Absent: None  
Date: February 27, 2018  
xc: OoA

Kecia Harper-Ihem  
Clerk of the Board  
By: *Kecia Harper-Ihem*  
Deputy

**SUBMITTAL TO THE BOARD OF SUPERVISORS COUNTY OF RIVERSIDE,  
STATE OF CALIFORNIA**

<b>FINANCIAL DATA</b>	<b>Current Fiscal Year:</b>	<b>Next Fiscal Year:</b>	<b>Total Cost:</b>	<b>Ongoing Cost</b>
<b>COST</b>	\$ 0	\$ 0	\$ 0	\$ 0
<b>NET COUNTY COST</b>	\$ 0	\$ 0	\$ 0	\$ 0
<b>SOURCE OF FUNDS: N/A</b>			<b>Budget Adjustment:</b>	No
			<b>For Fiscal Year:</b>	2016/17

**C.E.O. RECOMMENDATION:** Approve.

**BACKGROUND:**

**Summary**

The Advisory Council is composed of seventeen (17) members, the majority of whom are 60 years of age or over. The members represent the Supervisorial Districts, as well as the diverse racial, social and economic profiles of the aging community and persons with a disability.

- Five (5) members are appointed by the offices of the Board of Supervisors.
- Twelve (12) members are appointed by the Advisory Council.

Under the Older Americans Act and Older Californian's Act, the Council is mandated to provide planning and policy guidance to the Office on Aging and Board of Supervisors; also advocacy to seniors and disabled adults in Riverside County. In addition, the Council is required to issue an annual report on activities and accomplishments. The attached report summarizes the scope and depth of the Council's contribution for 2016/17.

**Impact on Residents and Businesses**

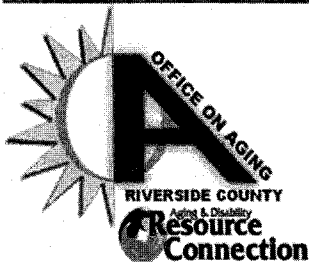
As evidenced in the Annual Report, the Riverside County Advisory Council on Aging is a group of seasoned and diverse community leaders and advocates committed to enriching the quality of local services targeting older adults, persons with disabilities and caregivers in the County of Riverside.

**ATTACHMENT:**

**ATTACHMENT A. Riverside County Advisory Council on Aging Annual Report 2016 - 2017**

SUBMITTAL TO THE BOARD OF SUPERVISORS COUNTY OF RIVERSIDE,  
STATE OF CALIFORNIA

  
Jennifer Sargent, Principal Management Analyst 2/20/2018



# RIVERSIDE COUNTY ADVISORY COUNCIL ON AGING



## 2016 - 2017 REPORT

*Gary Kelley, Advisory Council Chair*  
December 2017

### ADVISORY COUNCIL 2016 - 2017

*The Riverside County Advisory Council on Aging* is composed of a group of diverse community leaders and advocates who are committed to enriching the quality of local services that target older adults, persons with disabilities, and caregivers in the County of Riverside.

### BACKGROUND

*The Advisory Council on Aging* ("Council") was established on June 18, 1974, by the Riverside County Board of Supervisors to advise the Riverside County Office on Aging (OoA) on all matters related to the development of the Area Plan on Aging (AP). The AP describes the OoA's future activities over a 4-year period and describes the county's efforts to identify and deliver the needed services for older adults, adults with disabilities, and their caregivers.

*The Council offers guidance, feedback, and assistance* to the development of coordinated systems of care as described in the 2016-2020 Area Plan. The Council is also the primary advocacy body for older adults who have special needs, with particular attention to those who are from minority groups; have low incomes; live in rural, isolated areas; have limited English-speaking proficiency; and those who are lesbian, gay, bisexual, and transgender (LGBT).



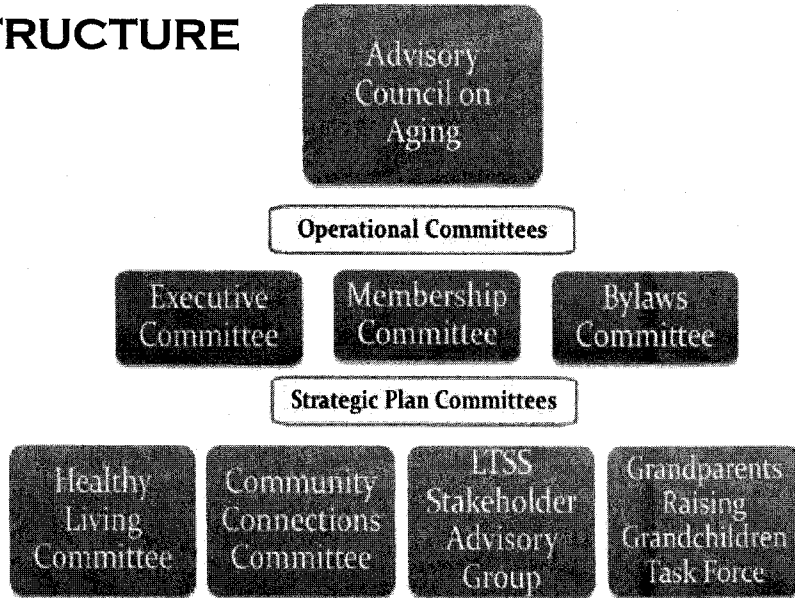
### IN THIS ISSUE:

- PAGE 1-2  
Background & Purpose
- PAGE 3-4  
Members & Memorial
- PAGE 5  
Service Awardee
- PAGE 6-7  
Accomplishments

### CURRENT FOCUS

The Advisory Council focuses its efforts and activities in support of the priority areas described in the Area Plan: *community services; health and wellness; person-centered care; support of caregivers; and enhanced integration of senior services.* The members offer insight and recommendations on service delivery strategies that yield the most impact. As ambassadors for aging services, the Council's widespread networks offer invaluable resources and support to seniors and other persons in need.

**STRUCTURE**



**MEMBERSHIP**

*The Advisory Council consists of seventeen (17) members, the majority of whom are over the age of 60. The members represent the Supervisorial Districts, as well as the diverse racial, social, and economic profiles of the aging community and persons with a disability.*

- Five (5) members are appointed by the offices of the Board of Supervisors.
- Twelve (12) members are appointed by the Advisory Council.

**In Fiscal Year 2016-17**

Advisory Council members dedicated a total of **1,429 volunteer hours** to their local communities, in support of seniors and persons with a disability.

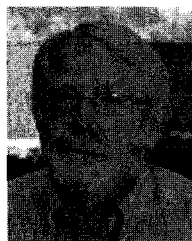


**COUNCIL TERMS AND DUTIES**

*Advisory Council members serve 3-year terms. Meetings are held on the second Wednesday of the month. Council members are also required to join one subcommittee with the following goals in mind: participate in the Council's advocacy efforts; act as countywide liaisons; assist with Council events; and reach out to partner agencies that also offer services for older adults and persons with disabilities.*

*Executive Members in 2016 and 2017*

The Executive Committee is composed of Advisory Council officers and the chairs of each subcommittee. Executive members oversee the operational aspects of the council, which include development of meeting agendas, strategic planning, and team building.



**Gary Kelley**  
Chair  
Lake Elsinore

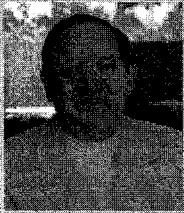


**Barbara Mitchell**  
Vice-Chair  
Riverside



**Eileen Packer**  
Parliamentarian  
Palm Desert

**GENERAL MEMBERS**



**Erwin Fromm**  
Rancho Mirage



**Beverly Greer**  
Palm Springs



**Vee Maiden**  
Perris



**Steve Mehlman**  
Beaumont



**Doris Morgan-Hayes**  
Blythe



**Cynthia Mendez**  
Perris

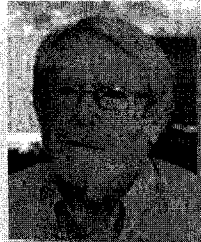


**Arthur Salyer**  
Temecula



**Luella Thornton**  
Banning

*Board of Supervisor Appointees \**



**Gary Kelley**  
Lake Elsinore  
1<sup>st</sup> District



**Sharron Lambeth**  
Corona  
2<sup>nd</sup> District



**Stanley Fischer**  
Winchester  
3<sup>rd</sup> District



**Gloria Sanchez**  
Menifee  
5<sup>th</sup> District

\*Note: 4<sup>th</sup> District appointee is vacant as of December 2017.

**WELCOME ABOARD!**

*In 2016 and 2017, the Advisory Council welcomed two new members.*

*Stanley P. Fischer was appointed to the Council in 2016 to represent the 3rd Supervisorial District.*

Mr. Fischer has a B.S. in Business Management from Fairleigh Dickinson University and is a Vietnam Veteran. He retired in 2016 after a long career as a Buyer of Consumer Electronics for major department stores. In his free time, he enjoys restoring classic British cars.

*Arthur Salyer joined the Council in 2017 as a general member from the Temecula area.*

Mr. Salyer has a MBA from Pepperdine University and a Bachelors in Engineering from Cal State Long Beach. He is an avid volunteer and energetic leader. His proven record of leadership has impacted multiple industries including world class operations, supply chain, and sourcing strategies.

# THANK YOU FOR YOUR SERVICE!

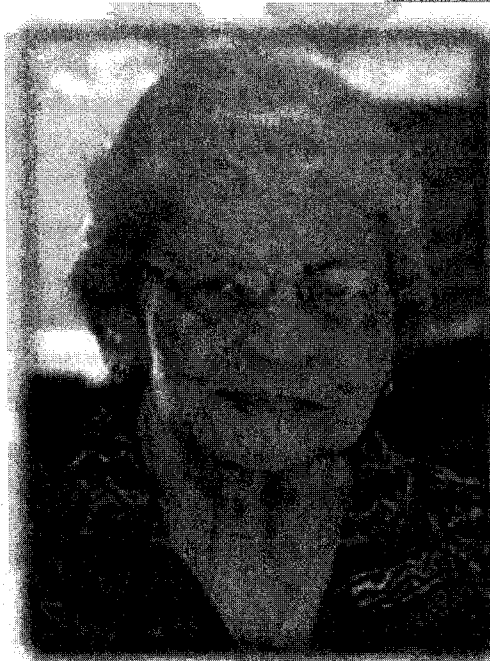
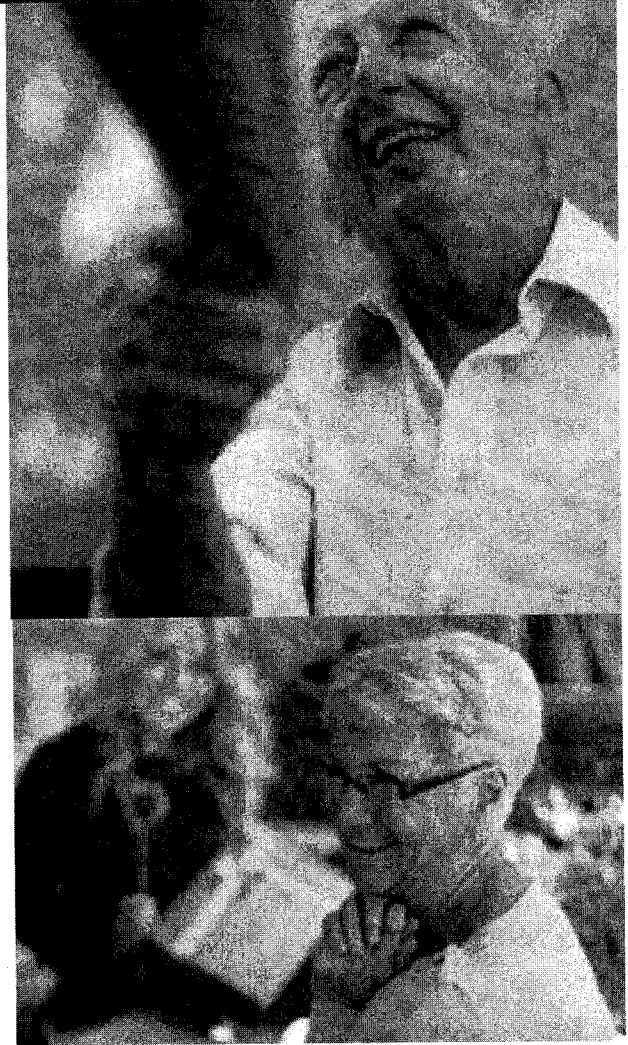
Several members left the Advisory Council during 2016 and 2017. Although they will be missed, we are excited to see them move on to the next chapter in their lives. *We thank our past Council members for their service and dedication* to older adults and persons with disabilities in Riverside County.



*Jerry Corrales* served as Parliamentarian and Co-Chair of the Healthy Living Committee. Jerry was a Council member for seven years, participating on various committees and initiatives related to older adult residential care facilities, and patient's rights.



*Sonja Martin* served the Advisory Council as the District 4 appointee from 2013-2017. During her tenure, she served as the Chair of the Grandparents Raising Grandchildren Task Force and was an advocate for aging services that focus on mental health and older women.



## In Memory of *Alice Bernice Chandler*

*May 31, 1933 - June 9, 2017*

*Alice B. Chandler was born and raised in Ohio. Upon her graduation from Washington High School, Alice enlisted in the Women's Army Corps (WAC) from 1957 to 1963. While in the WAC, she was stationed in various locations including France and Ft. Leavenworth, Kansas. She received several citations and medals during her service to her country.*

*Ms. Chandler settled in Pasadena upon returning to the United States. After earning her teaching credentials, she became a Radiology Technician Instructor with East Los Angeles Occupational College (ELAOC) until her retirement.*



*Upon her retirement from ELAOC, Ms. Chandler relocated to County Village in Mira Loma, where she became very active in Veterans Affairs and the Advisory Council on Aging. Ms. Chandler was a long standing member of the Council, serving from 2006 until her death. Alice leaves behind a family and a community who are grateful for her commitment and service. Alice was laid to rest at Riverside National Cemetery on July 28, 2017.*

# OUTSTANDING CONTRIBUTION AWARD

## *Randolph "Randy" Lowe*

*On July 1, 2016, the Riverside County Board of Supervisors, the Office on Aging, and the Advisory Council on Aging honored Mr. Lowe with the "Riverside County Office on Aging Service Award for Outstanding Contributions to Older Adults and Persons with Disabilities."* At the time this award was presented, Randy Lowe had been consistently at the forefront of combating issues facing older adults and persons with disabilities and he had worked tirelessly to ensure those people were able to lead more independent and fulfilling lives.

*As Chairman of the Board of Directors for the LGBT Community Center of the Desert ("Center"), Mr. Lowe successfully expanded agency membership, business partnerships, and clientele. His vision and leadership led to the development of new Center services that focus on seniors and persons with a disability, including: legal aid, 12-step programs, bereavement counseling, and classes that support both mental and physical enrichment.*

With this award, Mr. Lowe was commended for his successful partnership efforts with both community-based organizations and county departments, with the goal of promoting wellness and self-determination for those who received services from the Center. Through his tenacity and unyielding dedication, Mr. Lowe successfully raised hundreds of thousands of dollars from grants and other diverse funding sources. Moreover, Mr. Lowe exhibited the kind of leadership that resonated with all of those who worked with him, including staff, members of partner agencies, volunteers, and clients. Mr. Lowe willingly dedicated his life to serving others and his legacy is proof that, indeed, one person can make a difference.



## *In Memory of Mr. Lowe*

*With our heartfelt  
gratitude for his tireless  
efforts on behalf of the  
LGBT community, older  
adults, and persons  
with disabilities in  
Riverside County.*

Left to right: **Gary Kelley**, Advisory Council Chair; **Randy Lowe**, Award Recipient; **Anna L. Martinez**, Office on Aging Director (Retired, 2017).



## ACCOMPLISHMENTS

*Advisory Council members participate in a number of community outreach activities throughout the year on an ongoing basis, with the goal of informing consumers and the general public about the resources available for seniors. Council members also continue to learn about prevailing aging-related issues by attending in-service presentations, distributing community assessment surveys, and attending service workgroups and seminars. Examples of activities in 2016 and 2017 include participation in the following events as sponsors, attendees, presenters, and/or planning committee members:*



**KAY CISNEROS SENIOR CENTER, MENIFEE (Nov. 2017)** - More than 100 volunteers gave up part of their Thanksgiving Day last week to help serve free turkey dinners to nearly 400 residents in what is fast becoming a tradition in the city.



**SAN JACINTO SENIOR CENTER  
"SENIOR FORUM" (Nov. 2017)**

**RANCHO SPRINGS MEDICAL CENTER  
CAREGIVER APPRECIATION, MURRIETA  
(Nov. 2017)**

## ACCOMPLISHMENTS INCLUDE:

*Advocacy* with the state legislature on behalf of older adults, the California Association of Area Aging on Aging (c4a), the National Association of Area Agencies on Aging (n4a), the Triple-A Council of California (TACC), and the California Senior Legislature (CSL).

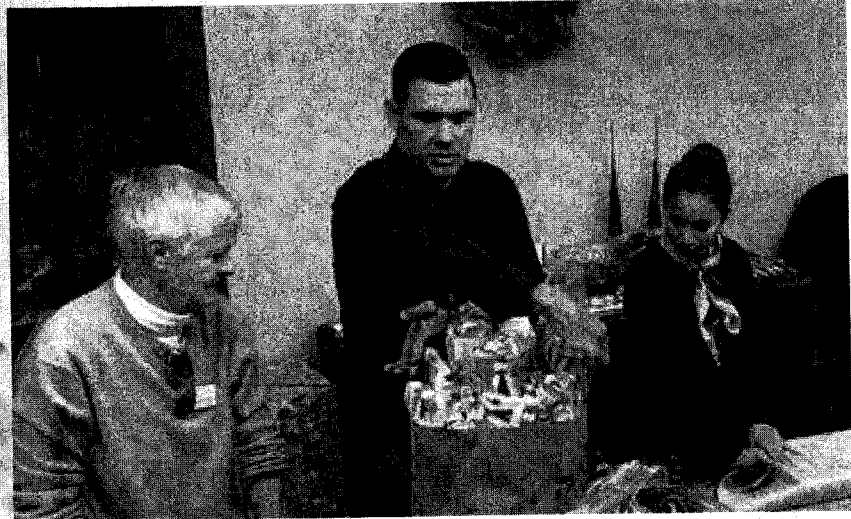


*Volunteer service* hours in local community events throughout the year.

*Partnership* with other organizations to organize events.

*Dissemination of information* about OoA programs as members in other commissions and advisory boards.

*Review and feedback* on the OoA four-year Agency Plan, required and approved by the State of California.



*Senior Gift Drive Indio Kickoff -- December 2017*