



## 121 Dry Basecoat & Adhesive

TEST	METHOD	CRITERIA	RESULTS
Accelerated Weathering*	ASTM G153 (ASTM G 23) ASTM G154	No deleterious effects at 2000 hours when viewed under 5x magnification	Pass
Fungus Resistance	MIL STD 810B		28 days: no growth
Freeze/Thaw Resistance*	ASTM E2485	No deleterious effects at 10 cycles when viewed under 5x magnification	Pass
Impact Strength	EIMA 101.86 / ASTM E2486	Standard Impact	Pass with Standard Mesh, Higher Impact Ranges per Mesh
Mildew Resistance	ASTM D3273	No growth supported during 28 day exposure period	Pass
Water Penetration	ASTM E331	No water penetration beyond the plane of the Basecoat/EPS board interface after 15 minutes at 6.24 psf (299 Pa)	Pass
Moisture Resistance	ASTM D2247	No deleterious effects at 14 day exposure	Pass
Salt Fog Resistance*	ASTM B117	No deleterious effects at 300 hours	Pass: 500 hrs
Surface Burning Characteristics	ASTM E84	< 25 Flame Spread < 450 Smoke Developed	Flame Spread : 0 Smoke Developed :10
Tensile Adhesion (psi)	ASTM C297	> 15 psi or no failure of adhesive	Pass: Concrete, Gypsum Sheathing, Dens-Glass Gold, Cement Board
Water Penetration	ASTM E331	No water penetration beyond the inner-most plane of the wall after 2 hours at 299 Pa (6.24 psf)	Pass
Water Vapor Transmission	ASTM E96 Procedure B	Vapor Permeable	Permeable
Wind-Driven Rain	F.S. TT-C-555B		24Hrs: No penetration of water

\*Tested with Parex USA Reinforcing mesh and DPR Finish Coat

### DESCRIPTION:

- Basecoat for Parex EIFS
- Adhesive to laminate EPS to listed substrates
- Applied without the addition of cement
- Mixed on site with water
- Excellent workability

### USES:

- EPS adhesive for the following substrates:
  - Exterior grade gypsum sheathing
  - Glass mat gypsum sheathing
  - Masonry, concrete and cement board
  - EPS
  - Parex USA WeatherSeal Spray & Roll-On and WeatherSeal Trowel-On Water Resistive Barrier Coatings
- Basecoat for Parex NuTech and other architectural coatings and finishes (ACF).
- Leveler and filler for masonry, concrete, stucco surfaces. For this application only, 121 Dry Basecoat & Adhesive can be built up to 1/4 in. (6 mm) thick in a single pass.

### COMPOSITION:

- Binder base: Copolymer compatible with portland cement
- Water base: VOC-Compliant
- Color: Light gray

### WORKING TIME:

Pot life is 1-2 hours after water has been added. Open time is affected by humidity and temperature.

### DRYING TIME:

Full adhesive bond strength is reached after 1-4 days, depending on humidity and temperature. Dries within 24 hours under normal drying conditions [70°F (21°C), 50% RH]. Cold and/or humid weather may extend drying time. Parex USA Accel-Pak may be added to decrease drying time. See Data sheet for more information.

### CLEAN-UP:

Water-soluble prior to drying. Clean tools and containers with water before mixture sets.

## COVERAGE:

Depending on the condition of the substrate and method of application, approximate coverages per bag are:

- As an adhesive:
  - 5/16 in. (8mm) notched trowel: 130-140 ft<sup>2</sup> (12-13 m<sup>2</sup>)
  - 5/8 in. (16mm) notched trowel: 92-100 ft<sup>2</sup> (8-9 m<sup>2</sup>)
- 1/2 in. (12.7mm) notched trowel: 113-120 ft<sup>2</sup> (10.5 - 11.2 m<sup>2</sup>)
- As a basecoat to embed 355 Parex USA Standard Mesh: 75-95 ft<sup>2</sup> (7-9 m<sup>2</sup>)
- As a double-layer basecoat to embed 355 Parex USA Standard Mesh and 358.20 Ultra High Impact Mesh: 35-55 ft<sup>2</sup> (3.3-5.1 sq. m<sup>2</sup>)
- As a leveler, coverage depends upon the thickness applied.

## CONTAINER:

- 50 lbs. (22.7 kgs) net weight in multiwall moisture-resistant bags.
- Storage: Store off the ground and protect from sun and moisture
- Shelf life: Reference Parex USA Expiration Date of Products Technical Bulletin

## SURFACE PREPARATION:

- Planar irregularities are limited to 1/4 in. (6mm) or less in a 4 ft. (1.22 m) radius. Surface irregularities are limited to 1/4 in. (6mm) or less for masonry and concrete and 1/8 in. (3mm) or less for sheathing.
- Irregular and uneven surface should be filled with any Parex 121 Basecoat & Adhesive.
- Remove surface contaminants such as dust or dirt without damaging the substrate.
- Painted substrates must have the paint removed with methods that result in no more than 10% of the remaining surface having paint.
- For additional options for surface preparation, contact Parex USA Technical Services Department.

## MIXING:

- Use clean equipment for mixing and preparation.
- Add 5-6 quarts (4.7-5.7 L) of cool clean potable water to a 5 gal pail. Add half of the amount of 121 Dry Basecoat & Adhesive and mix to a homogenous consistency using a heavy-duty 1/2 in. (13 mm) drill with a rust-free paddle at 400-500 rpm.

Then add the remaining half and mix until consistent.

- Small amounts of cool clean potable water may be added to adjust workability.
- Let the mixture stand for five minutes after initial mixing, then stir again, adding small amounts of water for workability once only.
- Parex 121 Dry Basecoat & Adhesive should be used immediately after mixing.
- Half batches may be mixed for convenience.
- Only Parex USA approved additives can be added to this product.

## APPLICATION:

- Read the entire label before using this product.
- Adhesive Application: Apply the 121 Dry Basecoat & Adhesive to the entire surface on one face of the insulation board, using a 5/8 in. (16mm) notched trowel for masonry and concrete, or a 1/2-in. notched trowel for the Standard WaterMaster System, or a 5/16 in. (8mm) notched trowel for sheathing. The adhesive ribbons should be of uniform thickness, run vertically when positioned on the wall (parallel to the 2 ft. [61 cm] board dimension), and reach the perimeter of the insulation board. To ensure high initial grab and uniform adhesive contact, apply insulation board to the wall with firm pressure to the entire surface. Apply sufficient pressure to flatten adhesive ridges. Glass mat sheathing requires extra pressure.
- Basecoat Application: Rasp EPS board after 24 hours and when adhesive has fully cured and bonded. Using a stainless steel trowel, apply the 121 Dry Basecoat & Adhesive mixture to the rasped surface of the insulation board to a uniform thickness of 1/16 - 3/32 in. (1.5 - 2.4mm). Embed the Parex USA reinforcing mesh immediately in the wet 121 Dry Basecoat & Adhesive mixture. Smooth the surface of the 121 Dry Basecoat & Adhesive mixture with a trowel until the reinforcing mesh is fully embedded and the basecoat thickness is approximately 1/16 in. (1.5mm). The color of the reinforcing mesh should not be visible at the surface

of the 121 Dry Basecoat & Adhesive material. A slight pattern of the mesh is acceptable, due to shrinkage of the cementitious Basecoat upon drying.

- As a leveler or filler: Apply Parex 121 Dry Basecoat & Adhesive and trowel to a smooth, uniform surface. Maximum thickness in a single application should be no more than 1/4 in. (6mm).
- When overlapping reinforcing mesh, special care must be taken to ensure the basecoat & mesh is flat, level and free from bumps. Basecoat should be feathered onto either side of the overlap. The mesh overlaps should be reviewed to ensure they are acceptably flat before proceeding. Refer to Technical Bulletin 61 for more information.

## LIMITATIONS:

- Ambient and surface temperature must be 40°F (4°C) or higher during application and curing time. Provide supplemental heat and protection from precipitation as needed.
- Use only on surfaces that are sound, clean, dry, unpainted (10% or less) and free from any residue which may affect the ability of the 121 Dry Basecoat & Adhesive to bond to the surface.
- Application in direct sunlight in hot weather will significantly reduce open time for embedding Parex reinforcing mesh and smoothing the surface.
- Do not use as a leveler for EPS. Rasp EPS level.

## WARNING:

- Read complete warning information printed on product container prior to use. For medical emergency information, call 1-800-424-9300.
- For more information on handling this product refer to its Safety Data Sheet (SDS). The most current SDS and Product Data Sheet (PDS) can be found on our website.
- This Product Data Sheet has been prepared in good faith on the basis of information available at the time of publication. It is intended to provide users with information about the guidelines for the proper use and application of the covered product(s) under normal environmental and working conditions. Because each project is different, Parex USA, Inc. cannot be responsible for the consequences of variations in such conditions, or for unforeseen conditions.

Parex USA, Inc.  
4125 E. La Palma Ave., Suite 250  
Anaheim, CA 92807  
(866) 516-0061 Tech Support: (800) 226-2424



EIFS SOLUTIONS • STUCCO ASSEMBLIES • TILE AND STONE SYSTEMS **PAREXUSA** ENVISION IT ALL

© Parex USA, Inc. July 2015 • PX 121D DS 0715

# WUNDERFIXX®

Concrete Smoothing Compound



## PRODUCT DATASHEET

**DESCRIPTION:** Rapid Set® WUNDERFIXX® is a high performance, gray concrete smoothing compound. WUNDERFIXX is a blend of Rapid Set hydraulic cement, high-performance polymers and finely ground aggregate. Mix WUNDERFIXX with water to produce a workable, easy-to-apply mixture with excellent bonding characteristics. Trowel apply WUNDERFIXX to achieve a smooth and uniform finish. After applying, WUNDERFIXX may be sanded within 24 hours to achieve an ultra-smooth finish.

**USES:** Use WUNDERFIXX for cosmetic patching, detailing and smoothing. WUNDERFIXX is ideal for use on tilt-up panels, precast, formed work, concrete block and other concrete and masonry surfaces. Durable in wet environments, it is suitable for both interior and exterior applications. WUNDERFIXX may be used on vertical/overhead and non-wearing horizontal surfaces.

**ENVIRONMENTAL ADVANTAGES:** Use WUNDERFIXX to reduce your carbon footprint and lower your environmental impact. Production of Rapid Set cement emits far less CO<sub>2</sub> than portland cement. Contact your representative for LEED values and environmental information.

**APPLICATION:** Apply WUNDERFIXX in thicknesses from skim coat to 1/2" (1.3 cm). For thicker repairs, use appropriate Rapid Set® repair products. Consult your CTS Cement Representative for more information and training.

**SURFACE PREPARATION:** Application surface must be clean, sound and free from any materials that may inhibit bond, such as oil, asphalt, curing compound, acid, dirt and loose debris. Apply WUNDERFIXX to a surface that is dry or saturated with no standing water. A test area should be applied to determine suitability in the repair environment.

**MIXING:** The use of a drill-mounted mixing paddle is recommended. Organize work so that personnel and equipment are in place before mixing. **Use clean, potable water. WUNDERFIXX may be mixed using 6 to 8 quarts (5.7 L to 7.6 L) per 50-lb (22.7-kg) bag. Use less water to achieve higher strengths. Do not exceed 8 quarts (7.6 L) of water per bag.** For increased fluidity and workability, use Rapid Set® FLOW Control® plasticizing admixture from the Rapid Set® Concrete Pharmacy®. Place the desired quantity of mix water into the mixing container. While the mixer is running, add WUNDERFIXX. Mix for the minimum amount of time required to achieve a lump-free, uniform consistency. Do not retemper.

**INSTALLATION:** WUNDERFIXX has a working time of 60 minutes at a temperature of 70°F (21°C). Once in place, as the material becomes stiff (typically within 10 to 20 minutes), use a trowel to shave or cut the excess material to the desired shape. Material can be sanded, primed and painted the same day.

**CURING:** WUNDERFIXX does not require water curing or curing compound under moderate conditions at 70°F (21°C). In dry, windy or hot conditions, mist with water to maintain a continuously wet surface until the product has achieved sufficient strength.

**COLD WEATHER:** Environmental and material temperatures below 70°F (21°C) may delay setting time and reduce the rate of strength gain. Lower temperatures will have a more pronounced effect. Thinner sections will be more significantly affected. To compensate

## OVERVIEW

### Highlights:

**Easy To Use:** Just add water, no admixtures needed

**High Performance:** Patch, sand and paint the same day

**Ultra-Smooth Finish:** Grit free and sandable within 24 hours

**Excellent Bond:** Bonds to concrete, brick, block, plaster, tile and more

**Self-Curing Technology (SCT):** No water curing needed under normal conditions

### Conforms to:

ASTM C109

### MasterFormat® 2016

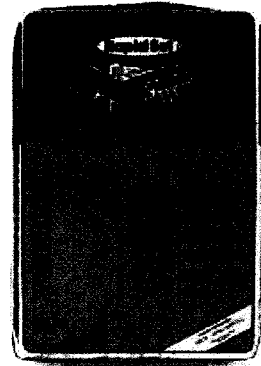
03 01 40 Maintenance of Precast Concrete

03 01 50 Maintenance of Cast Decks and Underlayments

09 24 23 Cement Stucco

### Manufacturer:

CTS Cement Manufacturing Corp.  
11065 Knott Ave., Suite A  
Cypress, CA 90630  
Tel: 800-929-3030 | Fax: 714-379-8270  
Web: [www.CTScement.com](http://www.CTScement.com)  
E-mail: [info@CTScement.com](mailto:info@CTScement.com)



# WUNDERFIX® Concrete Smoothing Compound

for cold temperatures, keep material warm, use heated mix water, and follow ACI 306 Procedures for Cold Weather Concreting.

**WARM WEATHER:** Environmental and material temperatures above 70°F (21°C) may speed setting time and increase the rate of strength gain. Higher temperatures will have a more pronounced effect. To compensate for warm temperatures, keep material cool, use chilled mix water, pre-wet substrate (saturated surface dry), and follow ACI 305 Procedures for Hot Weather Concreting. The use of Rapid Set® SET Control® retarding admixture from the Rapid Set® Concrete Pharmacy® will help offset the effects of high temperatures.

**YIELD & PACKAGING:** Rapid Set® WUNDERFIX® is available in 50-lb (22.7-kg) and 9-lb (4.1-kg) sizes. One 50-lb (22.7-kg) bag of WUNDERFIX will yield approximately 115 ft<sup>2</sup> at 1/16".

**SHELF LIFE:** WUNDERFIX has a shelf life of 12 months when stored properly in a dry location, protected from moisture, out of direct sunlight, and in an undamaged package.

**USER RESPONSIBILITY:** Before using CTS products, read current technical data sheets, bulletins, product labels and safety data sheets at [www.CTScement.com](http://www.CTScement.com). It is the user's responsibility to review instructions and warnings for any CTS products prior to use.

**WARNING: DO NOT BREATHE DUST. AVOID CONTACT WITH SKIN AND EYES.** Use material in well-ventilated areas only. Exposure to cement dust may irritate eyes, nose, throat, and the upper respiratory system/lungs. Silica exposure by inhalation may result in the development of lung injuries and pulmonary diseases, including silicosis and lung cancer. Seek medical treatment if you experience difficulty breathing while using this product. The use of a NIOSH/MSHA-approved respirator (P-, N- or R-95) is recommended to minimize inhalation of cement dust. Eat and drink only in dust-free areas to avoid ingesting cement dust. Skin contact with dry material or wet mixtures may result in bodily injury ranging from moderate irritation and thickening/cracking of skin to severe skin damage from chemical burns. If irritation or burning occurs, seek medical treatment. Protect eyes with goggles or safety glasses with side shields. Cover skin with protective clothing. Use chemical resistant gloves and waterproof boots. In case of skin contact with cement dust, immediately wash off dust with soap and water to avoid skin damage. In case of skin contact with wet concrete, wash exposed skin areas with cold running water as soon as possible. In case of eye contact with cement dust, flush immediately and repeatedly with clean water, and consult a physician. If wet concrete splashes into eyes, rinse eyes with clean water for at least 15 minutes and go to the hospital for further treatment.

**PROPOSITION 65 WARNING:** This product contains chemicals known to the State of California to cause cancer and birth defects or other reproductive harm.

Please refer to the SDS and [www.CTScement.com](http://www.CTScement.com) for additional safety information regarding this material.

**LIMITED WARRANTY:** CTS CEMENT MANUFACTURING CORP. (CTS) warrants its materials to be of good quality and, at its option, will replace or refund the purchase price of any material proven to be defective within one (1) year from date of purchase. The above remedies shall be the limit of CTS's responsibility. Except for the foregoing, all warranties expressed or implied, including merchantability and fitness for a particular purpose, are excluded. CTS shall not be liable for any consequential, incidental, or special damages arising directly or indirectly from the use of the materials.

## TYPICAL PHYSICAL DATA

### ASTM C109 Mod.

Age	Compressive Strength
24 hours	1000 psi (6.90 MPa)
28 days	1500 psi (10.3 MPa)

All data produced at 70°F (21°C)



COUNTY OF RIVERSIDE ECONOMIC DEVELOPMENT AGENCY

CHANGE ORDER NO. CO1

Date: 11/22/2017

Project Name: Public Defender/Probation Building

To Contractor:

PeopleSoft Project No: FM 08240003992

Best Contracting (flashing)  
19027 S. Hamilton Ave.  
Gardena, CA 90248

Distribution:

- (1) Project Manager
- (2) Contractor
- (3) Fiscal
- (4) Construction Manager
- (5) Inspector
- (6) Architect/Engineer

You are directed to make the following changes. Changes shall include labor, material and equipment; each item to include all charges or indirect arising out of this work:

DESCRIPTION OF CHANGE	REASON FOR CHANGE ORDER	COR#	TYPE	AMOUNT
1) Fabricate, Furnish and install 480' of 24 ga. Kynar coated metal for window sill flashing at corner plaster wall on levels 3 to 6. Cost for added flashing work due to the added parapet wall around the perimeter of the 8th floor roof per RFI #143	Plan/Essential Scope Omissions	2	ADD	\$9,378.81
2) Removal of allowance Cost to install temporary flashing at the curbs.	Unforeseen Conditions	2	ADD	\$28,726.64
3) Pipes and drains for water tightness.	Owner Requested	2	DEDUCT	(\$7,500.00)
4) Added sheet metal in the west stairwell to cover up the seismic saw cuts	Unforeseen Conditions	3	ADD	\$3,213.27
5) Owner Requested	Owner Requested	4	ADD	\$5,609.35
<b>TOTAL</b>				<b>\$37,426.07</b>

The specifications, where pertinent, shall apply to these changes.

This Change Order provides for a time extension of 282 calendar days

Original Contract Duration (calendar days):	<u>77</u>
Prior Authorized Time Extension (calendar days):	<u>0</u>
Revised Construction Duration (calendar days):	<u>339</u>
Original Contract Completion Date:	<u>3/29/2017</u>
Revised Contract Completion Date:	<u>12/15/2017</u>

NOTE: This change order is not effective until ALL signatures below are obtained, and if applicable, signature authority approval by Form 11 as indicated per Change Order Guidelines.

The undersigned contractor has given careful consideration to the change proposed, including its effect on other work already contracted for, and hereby agrees, if this change order is approved, that he will provide all equipment, furnish all materials, except as may otherwise be noted above, and perform all services necessary for the work above specified, and will accept as full payment for all costs related in any way thereto the prices shown above. Contractor expressly waives any contract right to pursue any further claim related to this change order work.

- 1) Bob Mars 12/4/17  
 Contractor (Signature) Date  
**BOB MARS, COO**  
 Contractor's Printed Name  
 Original Contract \$ 139,430.00  
 Prior Authorized  ADD  DEDUCT \$ 0.00  
 Total Contract Prior to this Change \$ 139,430.00
- 2) Chuck Washington 2/27/18  
 Assistant Director (Signature) Date  
**CHUCK WASHINGTON**  
 Vice-Chairman, Board of Supervisors  
 Authorized Changes on this Change Order: \$ 37,426.07  
 Amount of Contract Authorized Including this Change Order \$ 176,856.07
- 3) John Hopkins 12-5-17  
 Construction Manager's (Signature) Date  
 Pursuant to:  Board Policy B-11  M.O. and Date
- 4) Dominick Lombardi 2/7/18  
 Project Manager (Signature) Date  
**Dominick Lombardi**  
 Construction Manager's Printed Name
- 5) Tom Howell 2/7/18  
 Architect (Signature) Date  
**Tom Howell**  
 Architect's Printed Name

ATTEST:  
 KECIA HARPER-IHEM, Clerk  
 By: [Signature]  
 DEPUTY

FORM APPROVED BY COUNTY COUNSEL  
 BY: Synthia M. Gunzel 2-14-18  
 SYNTHIA M. GUNZEL DATE

FEB 27 2018 3.26

**COUNTY OF RIVERSIDE ECONOMIC DEVELOPMENT AGENCY**

**CHANGE ORDER NO. CO1**

**Date:** 11/22/2017

**Project Name:** Public Defender/Probation Building

**To Contractor:**

**PeopleSoft Project No:** FM 08240003992

Best Contracting (flashing)  
19027 S. Hamilton Ave.  
Gardena, CA 90248

**Distribution:**

- |                     |                          |
|---------------------|--------------------------|
| (1) Project Manager | (4) Construction Manager |
| (2) Contractor      | (5) Inspector            |
| (3) Fiscal          | (6) Architect/Engineer   |

**You are directed to make the following changes. Changes shall include labor, material and equipment; each item to include all charges or indirect arising out of this work:**

DESCRIPTION OF CHANGE	REASON FOR CHANGE ORDER	COR#	TYPE	AMOUNT
1) Fabricate, Furnish and Install 480'lf of 24 ga. Kynar coated metal for window sill flashing at corner plaster wall on levels 3 to 8. Cost for added flashing work due to the added parapet wall around the perimeter of the 8th floor roof per RFI #143	Plan/Essential Scope Omissions	2	ADD	\$9,378.81
2) Removal of allowance	Unforeseen Conditions	2	ADD	\$26,726.64
3) Cost to install temporary flashing at the curbs, Pipes and drains for water tightness.	Owner Requested	2	DEDUCT	(\$7,500.00)
4) Added sheet metal in the west stairwell to cover up the seismic saw cuts	Unforeseen Conditions	3	ADD	\$3,213.27
5)	Owner Requested	4	ADD	\$5,609.35
				<b>TOTAL</b>
				<b>\$37,428.07</b>

**The specifications, where pertinent, shall apply to these changes.**

**This Change Order provides for a time extension of**

Original Contract Duration (calendar days):	<u>262</u>	calendar days
Prior Authorized Time Extension (calendar days):	<u>77</u>	
Revised Construction Duration (calendar days):	<u>0</u>	
Original Contract Completion Date:	<u>339</u>	
Revised Contract Completion Date:	<u>3/29/2017</u>	
	<u>12/15/2017</u>	

**NOTE:** This change order is not effective until ALL signatures below are obtained, and if applicable, signature authority approval by Form 11 as indicated per Change Order Guidelines.

**The undersigned contractor has given careful consideration to the change proposed, including its effect on other work already contracted for, and hereby agrees, if this change order is approved, that he will provide all equipment, furnish all materials, except as may otherwise be noted above, and perform all services necessary for the work above specified, and will accept as full payment for all costs related in any way thereto the prices shown above. Contractor expressly waives any contract right to pursue any further claim related to this change order work.**

1) \_\_\_\_\_  
*Contractor (Signature) Date*

Original Contract		\$	<u>139,430.00</u>
Prior Authorized	<input type="checkbox"/> ADD <input type="checkbox"/> DEDUCT	\$	<u>0.00</u>
<b>Total Contract Prior to this Change</b>		\$	<b><u>139,430.00</u></b>

Contractor's Printed Name

Authorized Changes on this Change Order: \$ 37,428.07

2) \_\_\_\_\_  
*Assistant Director Date*  
*(Signature)*

Amount of Contract Authorized  
 Including this Change Order \$ 176,858.07

Vincent Coffeen  
 Assistant Director  
 Printed Name

Pursuant to:  Board Policy B-11  
 M.O. and Date

3) \_\_\_\_\_  
*Construction Manager's (Signature) Date*

John Hopkins  
 Construction Manager's Printed Name

4) \_\_\_\_\_  
*Project Manager (Signature) Date*

Dominick Lombardi  
 Project Manager's Printed Name

5) \_\_\_\_\_  
*Architect (Signature) Date*

Tom Howell  
 Architect's Printed Name

# PROWEST™

## CONSTRUCTORS

### CHANGE PROPOSAL REQUEST

Project Name: Riverside Public Defender/Probation Building Project

Architect's Project No.: RVC.043

EDA Project No. : FM08240003992

PTC CPR #: CO 04

PTC: Best Contracting(Flashing Contract)

DATE: 11/06/17

Contract No.: 011200.07

PTC Address: 19027 S. Hamilton Ave.

Gardena, CA 90248

**Best Contracting(Flashing Contract)** on behalf of itself and its subcontractors, suppliers, employees and trust funds of all tiers and all individuals and/or entities referred to in California Civil Code sections 3110, 3111, and 3112:

1 a. accepts the amount to be paid under this change order, and the time extensions granted by this change order, as payment in full for all costs, expenses and damages, known or unknown, direct or indirect (including without limitation, costs, expenses and damages resulting from delay, disruption, extended overhead, loss of productivity, impact, working out of sequence, acceleration, lost opportunity, etc.) incurred at any time (past, present or future) arising from:

#### DESCRIPTION OF THE PROPOSED CHANGE:

**Item No. 01** **Reference:** Cost for added sheet metal in the west stairwell to cover up the Seismic Saw Cuts done by previous contractor. \$ 5,609.35  
**Justification:** Work in Previous Contractor Contract  
**Reference Documentation:** Subcontract Change Order Request

**Total Change Order:** \$ 5,609.35

**Net Change in Calendar Days Due to This Proposed Change:** 0

Schedule impact to be evaluated at a later date.

The original (Contract Sum) was	\$ <u>139,430.00</u>
The net change by previously authorized Change Orders	\$ <u>31,818.42</u>
The (Contract Sum) prior to this Change Order was	\$ <u>171,248.42</u>
The (Contract Sum) will be (increased) <del>(decreased)</del> (unchanged) by this Change Order in the amount of	\$ <u>5,609.35</u>
The new (Contract Sum) including this Change Order will be	\$ <u>176,857.77</u>
The Contract Time will be (increased) <del>(decreased)</del> (unchanged) by :	<u>ZERO ( ) days</u>
The date of Substantial Completion as of the date of this Change Order therefore is:	<u>NO CHANGE</u>

# **PROWEST**

---

## **CONSTRUCTORS**

### **CHANGE PROPOSAL REQUEST**

**Project Name: Riverside Public Defender/Probation Building Project**  
**EDA Project # EDA Project No. : FM08240003992**  
**4075 Main Street**  
**Riverside, CA 92522**

**Architect's Project No.: RVC.043**  
**PTC CPR #: CO 04**  
**DATE: 11/06/17**

1 b. Releases, acquits and discharges THE OWNER, its officers, agents and employees from all liability, claims, damages, demands or costs, known or unknown, arising from the matters referred to in paragraph 1.a.

1 c. Expressly waives the provisions of section 1542 of the California Civil Code and understands that said section provides:

**A GENERAL RELEASE DOES NOT EXTEND TO CLAIMS WHICH A CREDITOR DOES NOT KNOW OR SUSPECT TO EXIST IN HIS FAVOR AT THE TIME OF EXECUTING THE RELEASE, WHICH IF KNOWN BY HIM MUST HAVE MATERIALLY AFFECTED HIS SETTLEMENT WITH THE DEBTOR.**

The parties acknowledge that this change has been reviewed by them and approved as to its form and content. The parties agree that this change order is to be construed and interpreted without regard to the identity of the party drafting this change order. Execution of this Change Order by all parties constitutes a binding agreement that no adjustment in compensation or time of performance shall be made as a result of the foregoing change(s), except as provided herein.

ProWest Constructors

BY: *John H. Smith*  
BY: \_\_\_\_\_

DATE: 11-20-17  
DATE: \_\_\_\_\_

Accepted by Contractor

PTC: *Bob Mars*  
BY: BOB MARS, COO

DATE: 11/18/17

County Of Riverside, EDA

\_\_\_ Accept  
\_\_\_ Do Not Accept  
\_\_\_ Reason Code

County Of Riverside, EDA

BY: \_\_\_\_\_ DATE: \_\_\_\_\_  
BY: \_\_\_\_\_ DATE: \_\_\_\_\_  
BY: \_\_\_\_\_ DATE: \_\_\_\_\_  
BY: \_\_\_\_\_ DATE: \_\_\_\_\_



# Change Order Request

PW COTS No.302



C.O.R. # CZ2-0006

G.C. # RFI# 266

Date: 11/6/2017

Project Name: CZ2 / Riverside Public Defender / Probation Bldg Project

Project #: CZ2

To: Prowest PCM, Inc.  
Attn: John Hopkins  
22710 Palomar St  
  
Wildomar, CA 92595

From: Best Contracting Services, Inc.  
Charlie Minshew  
19027 S. Hamilton Ave.  
Gardena, CA 90248-4408

Phone: 951-678-1034 Fax:

Phone: (310) 328-6969 Fax: (310) 380-6066

We hereby propose to make the following changes:

Fabricate, furnish and install 120'ft of 16ga galvanized expansion closure metal. Work is to be performed in the West stairway from level 2 to level 7.

Change Order Price

\$5,609.35

This price is good for 15 days. If conditions change, this price is void.

We are requesting a time extension of 0 days in conjunction with this change.

Charlie Minshew

11/6/2017

Author

Date Sent

Accepted

The above prices and specifications of this Change Order request are satisfactory and are hereby accepted. All work to be performed under same terms and conditions as specified in original contract unless otherwise specified.

Authorized Signature

Date of Acceptance

## Change Order Request



C.O.R. # CZ2-0006

G.C. # RFI# 266

Date: 11/6/2017

Project Name: CZ2 / Riverside Public Defender / Probation Bldg Project

Project #: CZ2

### Labor

Labor Type	Man Hrs	\$/Hr	Burden	Fringe	TotalTax	Total Labor
Sheet Metal Foreman	16.00	\$133.49	\$0.00	\$0.00	\$0.00	\$2,135.84
Sheet Metal Apprentice	16.00	\$92.46	\$0.00	\$0.00	\$0.00	\$1,479.36
Sheet Metal Fabrication / hr	4.00	\$85.00	\$0.00	\$0.00	\$0.00	\$340.00
Sub Total					<u>\$0.00</u>	<u>\$3,955.20</u>
Grand Total					<u>\$0.00</u>	<u>\$3,955.20</u>

### Materials

Materials	Quantity	Cost	TotalTax	Total Materials
16 ga Galvanized Expansion Cover Metal/ft	120.00	\$3.00	\$34.20	\$394.20
Misc. (Fasteners)/lot	1.00	\$140.00	\$0.00	\$140.00
Sub Total			<u>\$34.20</u>	<u>\$534.20</u>
Grand Total			<u>\$34.20</u>	<u>\$534.20</u>

### Equipment

Equipment	Quantity	Cost	TotalTax	Total Equipment
3/4 Ton Truck/day	1.00	\$340.00	\$0.00	\$340.00
Sub Total			<u>0.00</u>	<u>\$340.00</u>
Grand Total			<u>0.00</u>	<u>\$340.00</u>
<b>Total</b>				<b>\$4,829.40</b>
<b>Profit</b>				<b>\$724.41</b>
<b>Bond</b>				<b>\$55.54</b>
<b>Total</b>				<b>\$5,609.35</b>

# PROWEST CONSTRUCTORS

## CHANGE PROPOSAL REQUEST

Project Name: Riverside Public Defender/Probation Building Project  
 EDA Project No. : FM08240003992  
 PTC: Best Contracting(Flashing Contract)  
 Contract No.: 011200.07  
 PTC Address: 19027 S. Hamilton Ave.  
Gardena, CA 90248

Architect's Project No.: RVC.043  
 PTC CPR #: CO 02  
 DATE: 05/23/17

**Best Contracting(Flashing Contract)** on behalf of itself and its subcontractors, suppliers, employees and trust funds of all tiers and all individuals and/or entities referred to in California Civil Code sections 3110, 3111, and 3112:

1 a. accepts the amount to be paid under this change order, and the time extensions granted by this change order, as payment in full for all costs, expenses and damages, known or unknown, direct or indirect (including without limitation, costs, expenses and damages resulting from delay, disruption, extended overhead, loss of productivity, impact, working out of sequence, acceleration, lost opportunity, etc.) incurred at any time (past, present or future) arising from:

**DESCRIPTION OF THE PROPOSED CHANGE:**

- |                    |  |               |
|--------------------|--|---------------|
| <b>Item No. 01</b> | <b>Reference:</b> Fabricate, Furnish and Install 480'lf of 24 ga. Kynar coated metal for window sill flashing at corner plaster wall. On levels 3 to 8. Only will be sealing laps and miters on Kynar sill flashing.<br><b>Justification:</b> RFI #246<br><b>Reference Documentation:</b> Subcontract Change Order Request | \$ 9,378.81   |
| <b>Item No. 02</b> | <b>Reference:</b> Cost for added flashing work due to the added parapet wall around the perimeter of the 8th floor roof per RFI #143.<br><b>Justification:</b> RFI #143<br><b>Reference Documentation:</b> Subcontract Change Order Request  | \$ 26,726.34  |
| <b>Item No. 03</b> | <b>Reference:</b> Removal of Allowance No. 01 as listed within Contract Agreement dated 13th Day of December 2016.<br><b>Justification:</b> Allowance used to cover costs associated with previous changes.<br><b>Reference Documentation:</b> Pages from Executed Contact   | \$ (7,500.00) |

**Total Change Order: \$ 28,605.15**

**Net Change in Calendar Days Due to This Proposed Change: 0**

Schedule impact to be evaluated at a later date.

The original (Contract Sum) was	\$ <u>139,430.00</u>
The net change by previously authorized Change Orders	\$ <u>-</u>
The (Contract Sum) prior to this Change Order was	\$ <u>139,430.00</u>
The (Contract Sum) will be (increased) ( <del>decreased</del> ) ( <del>unchanged</del> ) by this Change Order in the amount of	\$ <u>28,605.15</u>
The new (Contract Sum) including this Change Order will be	\$ <u>168,035.15</u>
The Contract Time will be (increased) ( <del>decreased</del> ) ( <del>unchanged</del> ) by :	<u>ZERO ( ) days</u>
The date of Substantial Completion as of the date of this Change Order therefore is:	<u>NO CHANGE</u>

# PROWEST<sup>TM</sup>

---

## CONSTRUCTORS

### CHANGE PROPOSAL REQUEST

Project Name: Riverside Public Defender/Probation Building Project  
EDA Project # EDA Project No. : FM08240003992  
4075 Main Street  
Riverside, CA 92522

Architect's Project No.: RVC.043  
PTC CPR #: CO 02  
DATE: 05/23/17

1 b. Releases, acquits and discharges THE OWNER, its officers, agents and employees from all liability, claims, damages, demands or costs, known or unknown, arising from the matters referred to in paragraph 1. a.

1 c. Expressly waives the provisions of section 1542 of the California Civil Code and understands that said section provides:

A GENERAL RELEASE DOES NOT EXTEND TO CLAIMS WHICH A CREDITOR DOES NOT KNOW OR SUSPECT TO EXIST IN HIS FAVOR AT THE TIME OF EXECUTING THE RELEASE, WHICH IF KNOWN BY HIM MUST HAVE MATERIALLY AFFECTED HIS SETTLEMENT WITH THE DEBTOR.

The parties acknowledge that this change has been reviewed by them and approved as to its form and content. The parties agree that this change order is to be construed and interpreted without regard to the identity of the party drafting this change order. Execution of this Change Order by all parties constitutes a binding agreement that no adjustment in compensation or time of performance shall be made as a result of the foregoing change(s), except as provided herein.

ProWest Constructors

BY: [Signature]  
BY: \_\_\_\_\_

DATE: 7-28-17  
DATE: \_\_\_\_\_

Accepted by Contractor

PTC: Bob Mars  
BY: \_\_\_\_\_  
Bob Mars, C.O.O.

DATE: 7/27/17

County Of Riverside, EDA

County Of Riverside, EDA

\_\_\_\_ Accept  
\_\_\_\_ Do Not Accept  
\_\_\_\_ Reason Code

BY: \_\_\_\_\_ DATE: \_\_\_\_\_  
BY: \_\_\_\_\_ DATE: \_\_\_\_\_  
BY: \_\_\_\_\_ DATE: \_\_\_\_\_  
BY: \_\_\_\_\_ DATE: \_\_\_\_\_

Change Order Request

PW COTS NO. 106



C.O.R. # C22-0003

G.C. #

Date: 1/16/2017

Project Name: C22 / Riverside Public Defender / Probation Bldg Project

Project #: C22

To: Prowest PCM, Inc.  
Attn: Jeff Rising  
22710 Palomar St  
Wildomar, CA 92595

From: Best Contracting Services, Inc.  
Fernando Chavez  
19027 S. Hamilton Ave.  
Gardena, CA 90248-4408

Phone: 951-678-1034 Fax:

Phone: (310) 328-6969 Fax: (310) 380-6066

We hereby propose to make the following changes:

Fabricate, Furnish and Install 480' of 24 ga. Kynar coated metal for window sill flashing at corner plaster wall.

On levels 3 to 8. Only will be sealing laps and miters on Kynar sill flashing.

Please Note: Color Kynar sill flashing is to be standard color from Berridge Color chart submitted. Any custom color will be at an added cost.

Change Order Price

\$9,378.81

This price is good for 15 days. If conditions change, this price is void.

We are requesting a time extension of 0 days in conjunction with this change.

Fernando Chavez

1/16/2017

Author

Date Sent

Accepted

The above prices and specifications of this Change Order request are satisfactory and are hereby accepted. All work to be performed under same terms and conditions as specified in original contract unless otherwise specified.

Authorized Signature

Date of Acceptance

## Change Order Request



C.O.R. # CZ2-0003

G.C. #

Date: 1/16/2017

Project Name: CZ2 / Riverside Public Defender / Probation Bldg Project

Project #: CZ2

### Labor

Labor Type	Man Hrs	\$/Hr	Burden	Fringe	Total Tax	Total Labor
Sheet Metal Foreman	32.00	\$92.52	\$0.00	\$0.00	\$0.00	\$2,960.64
Sheet Metal Journeyman	32.00	\$85.80	\$0.00	\$0.00	\$0.00	\$2,745.60
SM Fabrication / hr	8.00	\$65.00	\$0.00	\$0.00	\$0.00	\$520.00
Sub Total					\$0.00	\$6,226.24
Grand Total					\$0.00	\$6,226.24

### Materials

Materials	Quantity	Cost	Total Tax	Total Materials
24 ga Kynar Metal Sill Flashing / lf	480.00	\$2.50	\$93.00	\$1,293.00
Misc (Sealant & Fasteners) lot	1.00	\$200.00	\$15.50	\$215.50
Sub Total			\$108.50	\$1,508.50
Grand Total			\$108.50	\$1,508.50

### Equipment

Equipment	Quantity	Cost	Total Tax	Total Equipment
on Truck	1.00	\$340.00	\$0.00	\$340.00
Sub Total			0.00	\$340.00
Grand Total			0.00	\$340.00

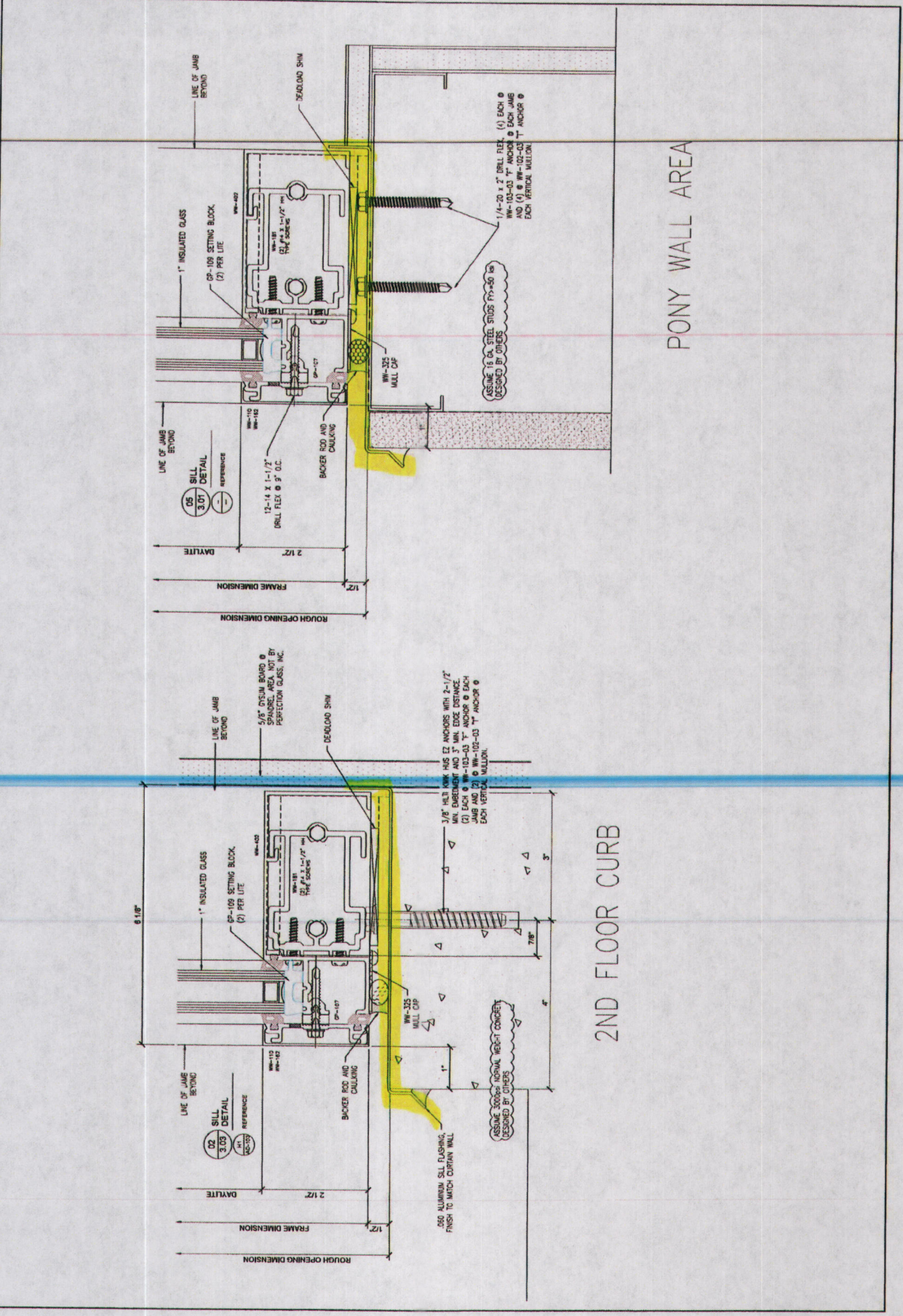
<b>Total</b>	<b>\$8,074.74</b>
<b>Profit</b>	<b>\$1,211.21</b>
<b>Bond</b>	<b>\$92.86</b>
<b>Total</b>	<b>\$9,378.81</b>

General Prevailing  
 Wage Riverside CO  
 Sheet Metal Worker  
 69.41

EW

1/24/17 COTS 106

NO.	REVISION DESCRIPTION	DATE	BY



2ND FLOOR CURB

PONY WALL AREA

PROJECT NAME: RIVERSIDE PUBLIC DEFENDER AND PROBATION BUILDING  
 LOCATION: RIVERSIDE, CA  
 DRAWN BY: ROD  
 DATE: 05.02.16  
 SCALE: FULL  
 SHEET NO: XXX  
 FILE NO: 0221

HOLT ARCHITECTURE

FROM SHIMBURIER PERMANENTLY  
 PREPARED FOR: PERFECTION CLASS, INC.  
 554 3RD STREET  
 LAKE ELSAHOKE, CA 92530  
 PHONE: 951-242-8200  
 FAX: 951-674-0441

COS 106

OLD



TURNED IN:

DATE: \_\_\_\_\_

TIME: \_\_\_\_\_

REQUIRED:

DATE: \_\_\_\_\_

TIME: \_\_\_\_\_

### SHOP ORDER TICKET

New Window Sill Flashing Detail

Floors 3 Thru 8 - Typical Wall Section At Corners

**ProWest Constructors**

Riverside County EDA  
Law Office of Public Defender  
and Probation

Submittal No. 07600.001

Paragraph: 1.05

Submittal Title Flashing and  
Sheet Metal

Reviewed By: Wesley Freeman *New Interior Wall  
Finish  
by Others*

Date Reviewed: 1/17/10

*by Others  
New Floor Covering*

*See around!*

*New Exterior Curtain  
Wall Glazing System  
by Others*

*by Others  
Continuous Caulking*

*24 Gauge  
New Prefinished Window  
Sill Flashing  
by Best*

*New Metal Framing  
by Others*

*New Exterior Plaster  
by Others*

*Existing Concrete Deck  
by Others*

PROJECT NAME:	<u>Riverside Public Defender</u>	GAUGE: _____	COLOR: _____
BEST JOB NO:		TYPE: (PLS. CHECK)	___ STAINLESS STEEL
PACKING CODE:		___ GALVANIZED	___ BONDERIZED
PROJECT MANAGER:		___ COPPER	___ CLAD
DRAWING NO.		___ ALUMINUM	___ OTHER
		LENGTH _____	QTY _____



COTS 106

01D



TURNED IN:

DATE: \_\_\_\_\_

TIME: \_\_\_\_\_

REQUIRED:

DATE: \_\_\_\_\_

TIME: \_\_\_\_\_

# SHOP ORDER TICKET

New Window Sill Flashing Detail

Floors 3 Thru 8 - Typical Wall Section  
At Corners

New Exterior Curtain  
Wall Glazing System  
by Others

See  
Rough

Continuous  
Caulking  
by Others

24 Gauge Prefinished  
Sill Flashing  
by Best  
Note:

Color to be  
Selected from  
Standard Color  
from Color Chart

#8 X 1 1/4" Modified  
Truss Head Self Drilling  
Screw

4"  
1/2"

3"

PROJECT NAME:

Riverside Public Defender

GAUGE: \_\_\_\_\_

COLOR: \_\_\_\_\_

BEST JOB NO:

TYPE: (PLS. CHECK)

STAINLESS STEEL

TRACKING ODE:

GALVANIZED

BONDERIZED

ALUMINUM

PROJECT MANAGER:

COPPER

CLAD

OTHER

DRAWING NO.

LENGTH \_\_\_\_\_

QTY \_\_\_\_\_

---

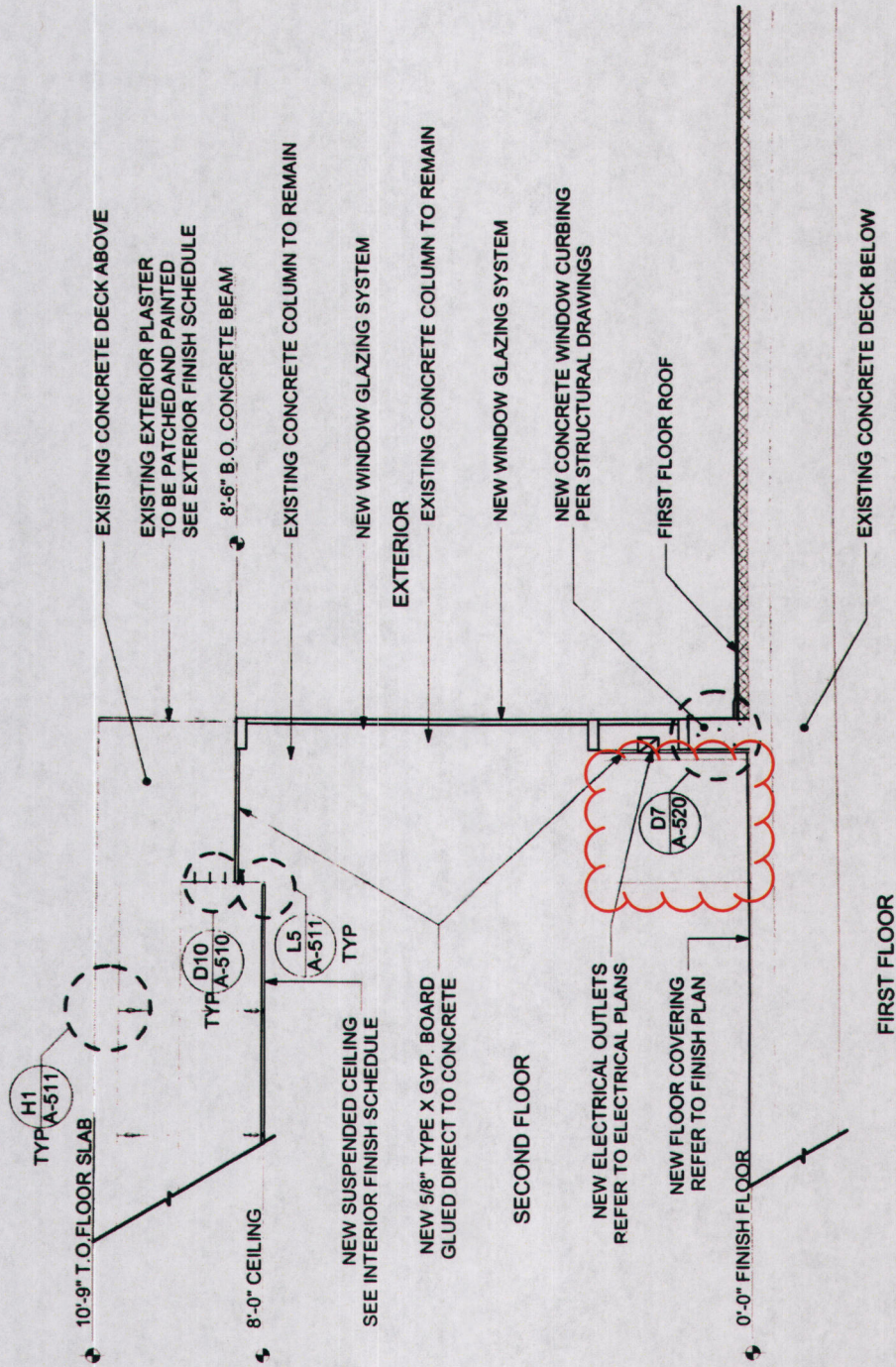
**ProWest Constructors****REQUEST FOR INTERPRETATION**Riverside County Economic Development Agency  
Riverside, CA**RFI No.:** 246**TITLE:** Pony Wall Flashing**DATE:** 1/10/2017**PTC:** Best Contracting**PROJECT :** Riverside Public Defender/Probation Building Project # FM08240003992**TO:** Thomas Howell, AIA - Holt Architecture  
70225 Highway 111, Suite D  
Rancho Mirage, CA 92270**REQUESTED:** 1/10/2017**REQUIRED:** 1/20/2017**ANSWERED:****QUESTION:**

Detail K8/A-302 as it relates to the concrete curb located under the New Window Glazing System takes us to D7/A-520. The D7 detail shows the flashing at this location to be "Sarnafil Clad". It also shows the Sarnafil single running up the curb and under the Sarnafil Clad Flashing. This condition only applies at the 2nd level roof. There is no detail for the required flashing that needs to be installed at the pony walls located at every corner under the window system and over the stucco on floors 3 through 8.

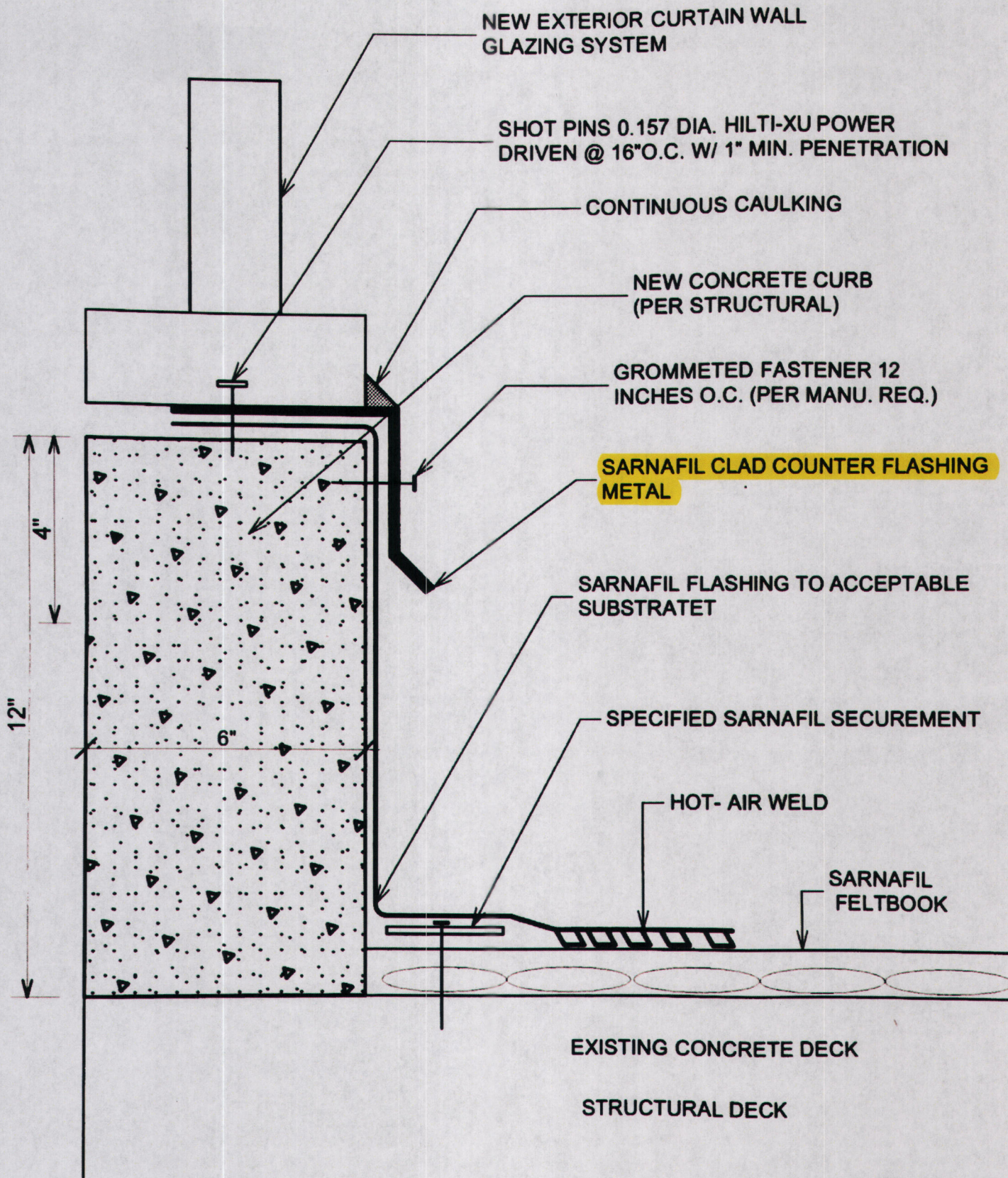
**DWG. / DETAIL REF:** K8/A-302 & D7/A-520**PROPOSED SOLUTION:**

In consideration of budget and schedule we Recommend installing bonderized metal flashing, 24 gauge or better at these locations. Please advise?

**Requested By:** Wesley Freeman      **Signed:** \_\_\_\_\_      **Date:** 1/10/2017**ANSWER:****Answered By:** \_\_\_\_\_      **Signed:** \_\_\_\_\_      **Date:** \_\_\_\_\_  
d



K8 FLOORS 2 THRU 8 - TYPICAL WALL SECTION AT CORNERS  
 NOT TO SCALE



D7

**REMOVABLE CURB FLASHING 2ND FL.**

## Wesley Freeman

---

**From:** Tom Howell  
**Sent:** Wednesday, January 11, 2017 10:08 AM  
**To:** Jeff Rising; Wesley Freeman  
**Cc:** Dominick Lombardi; Steven Porter  
**Subject:** RE: ProWest RFI #246 - Pony Wall Flashing Detail  
**Attachments:** PW RFI #246 - Sand Dollar Clad Metal[1].pdf

Jeff:

We choose the Sarnafil for warranty purposes since it sits under the curtain and would be a monster to fix if there is an issue.

Please inquire with the Roofing PTC if they would offer/accept another product with the same warranty as Sarnafil since the warranty is now is their court.

If so, please also provide an update to their Submittal/Warranty.

Thanks, Tom

---

**From:** Jeff Rising [mailto:jrising@prowestpcm.com]  
**Sent:** Wednesday, January 11, 2017 9:37 AM  
**To:** Tom Howell; Wesley Freeman  
**Cc:** Dominick Lombardi; Steven Porter  
**Subject:** RE: ProWest RFI #246 - Pony Wall Flashing Detail

Tom,

What other product would you recommend? Is the Sarnafil coated the only other possible option?

---

**From:** Tom Howell [mailto:thowell@holtarchitecture.com]  
**Sent:** Wednesday, January 11, 2017 8:53 AM  
**To:** Wesley Freeman <wfreeman@prowestpcm.com>; Jeff Rising (jrising@prowestpcm.com) <jrising@prowestpcm.com>  
**Cc:** Dominick Lombardi (dlombardi@rivcoeda.org) <dlombardi@rivcoeda.org>; Steven Porter <sporter@holtarchitecture.com>  
**Subject:** RE: ProWest RFI #246 - Pony Wall Flashing Detail

Wes/Jeff:

Since there isn't any technical info for this proposed Substitution, to help speed the process, here is some straight from <http://www.bonderized.com/>

There are some things to be cautious of when using Bonderized for metal roofing and siding:

1. NO WARRANTY
2. Material may develop white rust after installation.
3. When the material arrives on the jobsite it cannot get wet. Whether that moisture is from rain and/or condensation from a cold to hot day. If moisture gets into a tightly stacked bundle and sits there it will cause white rust.

4. Scratches easily.

Please let me know if there is any other technical, warranty or credit to consider before I complete the response.

Thanks, Tom

---

**From:** Wesley Freeman [<mailto:wfreeman@prowestpcm.com>]  
**Sent:** Wednesday, January 11, 2017 6:47 AM  
**To:** Tom Howell  
**Subject:** RE: ProWest RFI #246 - Pony Wall Flashing Detail

Tom,

Yes, it is the same issue, This RFI is just asking if the bonderized metal is acceptable?

Thank You

**WESLEY FREEMAN**  
**PROJECT ENGINEER**  
**PROWEST CONSTRUCTORS**  
Mobile: 951-529-7266  
Email: [wfreeman@prowestpcm.com](mailto:wfreeman@prowestpcm.com)



---

**From:** Tom Howell [<mailto:thowell@holtarchitecture.com>]  
**Sent:** Tuesday, January 10, 2017 3:39 PM  
**To:** Wesley Freeman <[wfreeman@prowestpcm.com](mailto:wfreeman@prowestpcm.com)>  
**Cc:** Jeff Rising <[jrising@prowestpcm.com](mailto:jrising@prowestpcm.com)>; Richard Slater <[rslater@prowestpcm.com](mailto:rslater@prowestpcm.com)>; [jdavis@prowestpcm.com](mailto:jdavis@prowestpcm.com);  
Steven Porter <[sporter@holtarchitecture.com](mailto:sporter@holtarchitecture.com)>  
**Subject:** ProWest RFI #246 - Pony Wall Flashing Detail

Wes: RFI#246 appears to be related to RFI#173 – please review and advise. Thanks, Tom

---

**From:** Wesley Freeman [<mailto:wfreeman@prowestpcm.com>]  
**Sent:** Tuesday, January 10, 2017 2:14 PM  
**To:** Steven Porter; Tom Howell  
**Cc:** Jeff Rising; Richard Slater; [jdavis@prowestpcm.com](mailto:jdavis@prowestpcm.com)  
**Subject:** PW RFI #246 - Pony Wall Flashing Detail

Steven/Tom,

Please see attached PW RFI #246 - Pony Wall Flashing Detail.

Thank You

Change Order Request



C.O.R. # CN7-0007

G.C. #

Date: 5/3/2017

Project Name: CN7 / Riverside Public Defender

Project #: CN7

To: ProWest Constructors / CN7

Attn:

22710 Palomar Street

Wildomar, CA 92595

Phone: (951) 678-1038

Fax: (951) 678-1034

From: Best Contracting Services, Inc.

Randy Ayala

19027 S. Hamilton Ave.

Gardena, CA 90248-4408

Phone: (310) 328-6969

Fax: (310) 380-6066

We hereby propose to make the following changes:

Added scope of work Per. RFI #143.

- 1. 8th floor perimeter parapet detail.

Change Order Price

\$26,726.34

This price is good for 15 days. If conditions change, this price is void.

We are requesting a time extension of 0 days in conjunction with this change.

Randy Ayala

5/3/2017

Author

Date Sent

Accepted

The above prices and specifications of this Change Order request are satisfactory and are hereby accepted. All work to be performed under same terms and conditions as specified in original contract unless otherwise specified.

Authorized Signature

Date of Acceptance

## Change Order Request



C.O.R. # CN7-0007

G.C. #

Date: 5/3/2017

Project Name: CN7 / Riverside Public Defender

Project #: CN7

### Labor

Labor Type	Man Hrs	\$/Hr	Burden	Fringe	Total Tax	Total Labor
Roofer Foreman	24.00	\$79.48	\$0.00	\$0.00	\$0.00	\$1,907.52
Roofer Journeyman	168.00	\$72.41	\$0.00	\$0.00	\$0.00	\$12,164.88
Roofer Fabrication	1.00	\$85.00	\$0.00	\$0.00	\$0.00	\$85.00
Sub Total					\$0.00	\$14,157.40
Grand Total					\$0.00	\$14,157.40

### Materials

Materials	Quantity	Cost	Total Tax	Total Materials
Samaclad TAN	20.00	\$183.18	\$329.72	\$3,993.32
G410 TAN (10' x 100')	1.00	\$1,460.00	\$131.40	\$1,691.40
G410 TAN (5'x100')	1.00	\$730.00	\$66.70	\$796.70
Fasteners #14	1.00	\$113.25	\$10.19	\$123.44
Stabon	4.00	\$202.00	\$72.72	\$880.72
Fasteners XP	1.00	\$114.44	\$10.30	\$124.74
Samestop	2.00	\$263.50	\$47.43	\$574.43
8" Cover strip	1.00	\$134.00	\$12.06	\$146.06
Aluminum Tape	1.00	\$20.21	\$1.82	\$22.03
Multi Purpose Tape	1.00	\$239.40	\$21.55	\$260.95
Sub Total			\$702.89	\$8,612.79
Grand Total			\$702.89	\$8,612.79

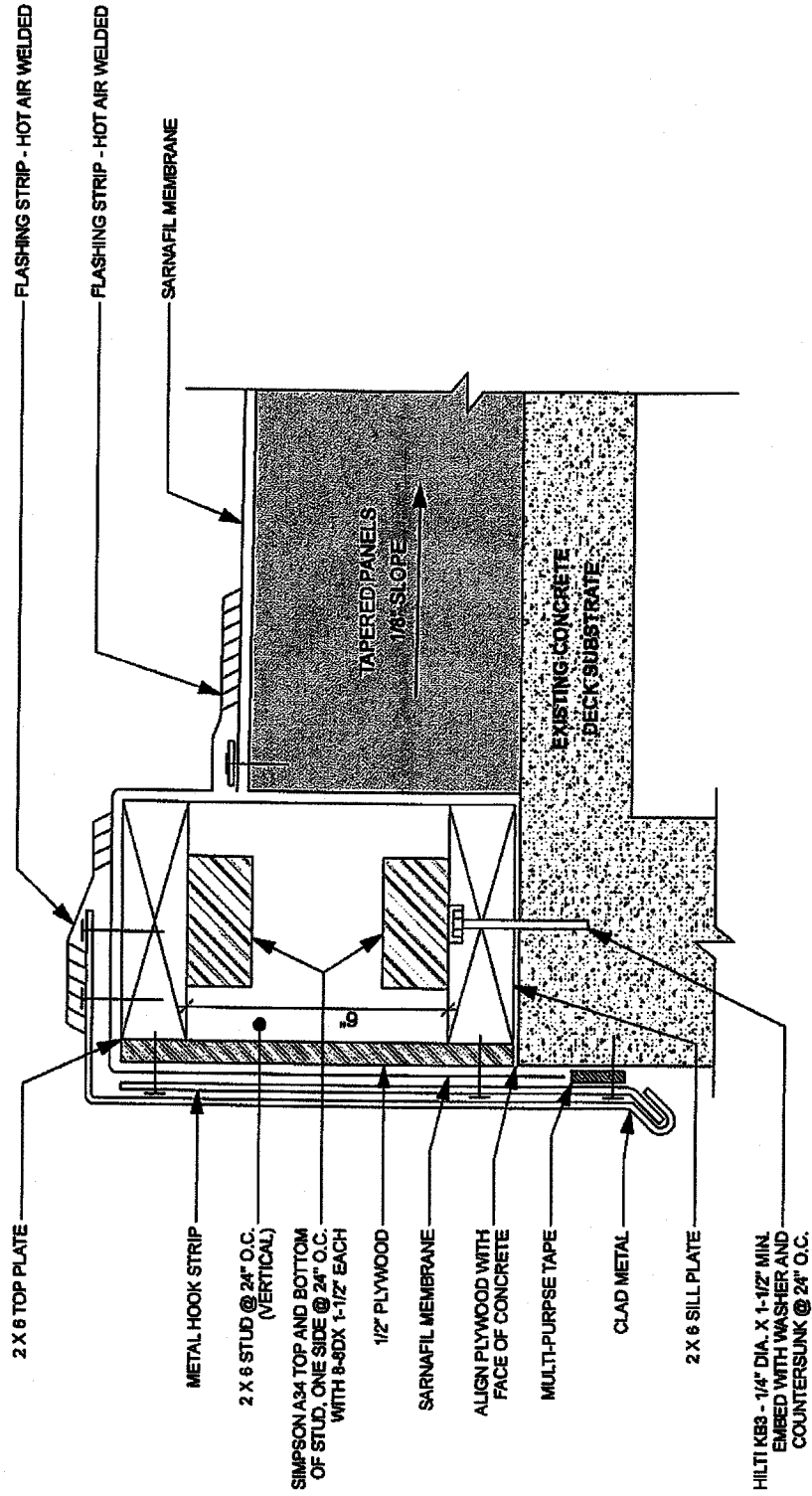
### Equipment

Equipment	Quantity	Cost	Total Tax	Total Equipment
3/4 Ton Truck	1.00	\$340.00	\$0.00	\$340.00
Sub Total			\$0.00	\$340.00
Grand Total			\$0.00	\$340.00

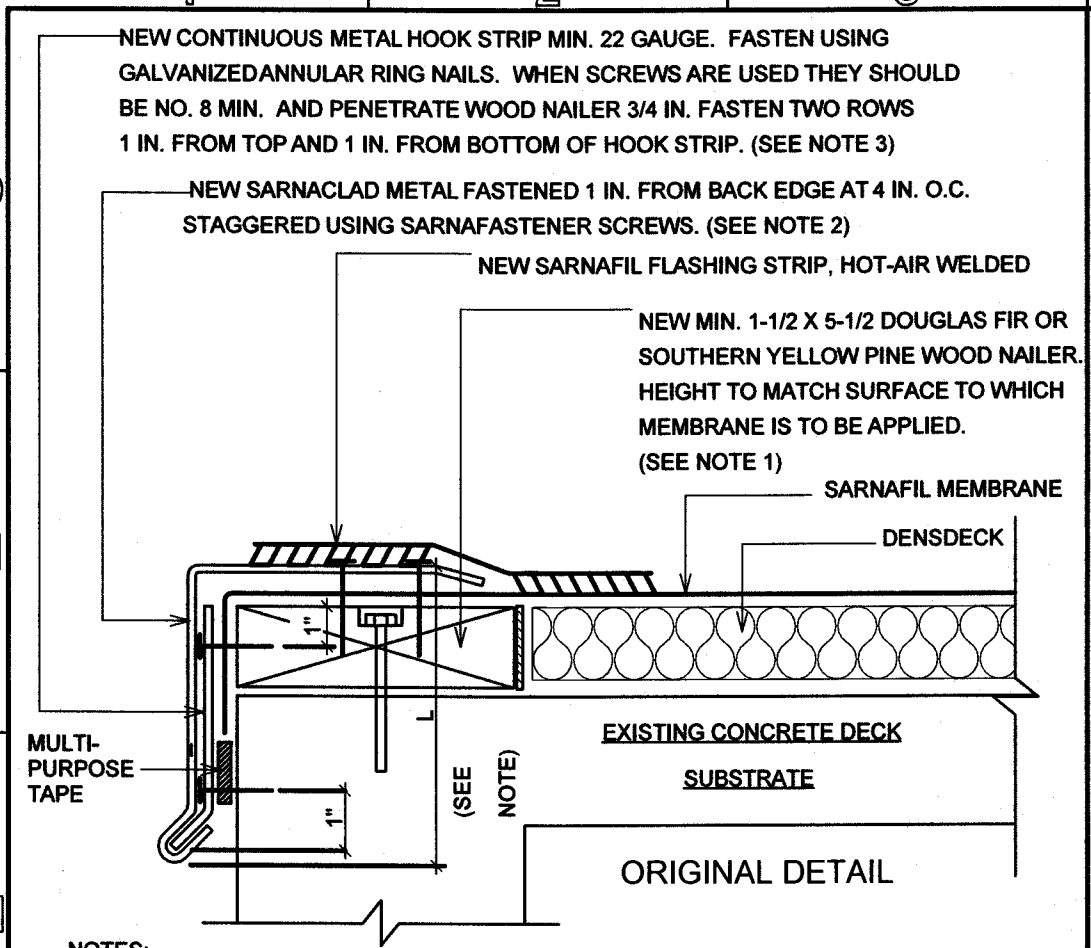
Total	\$23,010.19
Profit	\$3,451.53
Bond	\$264.62
Total	\$26,726.34



# RFI # 143 - RESPONSE



# 8TH FLOOR PERIMETER PARAPET DETAIL



**NOTES:**

- 1) WOOD NAILERS SHALL BE ATTACHED ACCORDING TO THE DESIGNERS SPEC. OR LOCAL CODE, WHICHEVER IS MORE STRINGENT.
- 2) MAXIMUM "L" DIMENSIONS SHALL BE 7 IN. FOR F.M. 1-60, AND 5 IN. FOR F.M. 1-90 SYSTEMS.
- 3) WITHDRAWAL RESISTANCE SHOULD BE 100 LB PER NAIL MIN. FOR HOOK STRIP. ANNULAR RING NAILS SHOULD PENETRATE 1-1/4 IN. INTO WOOD NAILER.
- 4) EXISTING WOOD NAILERS SHALL BE SECURED PER FACTORY MUTUAL LOSS PREVENTION DATASHEET 1-49 RECOMMENDATIONS.
- 5) FOLLOW FACTORY MUTUAL LOSS PREVENTION DATASHEET 1-49 RECOMMENDATIONS.

**L1**

**SARNACLAD METAL EDGE-HW**  
**NOT TO SCALE**

# PROWEST<sup>TM</sup>

---

## CONSTRUCTORS

### CHANGE PROPOSAL REQUEST

Project Name: Riverside Public Defender/Probation Building Project  
 EDA Project No. : FM08240003992  
 PTC: Best Contracting(Flashing Contract)  
 Contract No.: 011200.07  
 PTC Address: 19027 S. Hamilton Ave.  
Gardena, CA 90248

Architect's Project No.: RVC.043  
 PTC CPR #: CO 03  
 DATE: 10/30/17

**Best Contracting(Flashing Contract)** on behalf of itself and its subcontractors, suppliers, employees and trust funds of all tiers and all individuals and/or entities referred to in California Civil Code sections 3110, 3111, and 3112:

1 a. accepts the amount to be paid under this change order, and the time extensions granted by this change order, as payment in full for all costs, expenses and damages, known or unknown, direct or indirect (including without limitation, costs, expenses and damages resulting from delay, disruption, extended overhead, loss of productivity, impact, working out of sequence, acceleration, lost opportunity, etc.) incurred at any time (past, present or future) arising from:

**DESCRIPTION OF THE PROPOSED CHANGE:**

**Item No. 01** Reference: Cost to install temporary flashing at the curbs, Pipes and drains for water tightness. \$ 3,213.27  
Justification: Prepping for Weather  
Reference Documentation: Subcontract Change Order Request

**Total Change Order:** \$ 3,213.27

**Net Change in Calendar Days Due to This Proposed Change:** 0

Schedule impact to be evaluated at a later date.

The original (Contract Sum) was	\$ 139,430.00
The net change by previously authorized Change Orders	\$ 28,605.15
The (Contract Sum) prior to this Change Order was	\$ 168,035.15
The (Contract Sum) will be <del>(increased)</del> <del>(decreased)</del> <del>(unchanged)</del> by this Change Order in the amount of	\$ 3,213.27
The new (Contract Sum) including this Change Order will be	\$ 171,248.42
The Contract Time will be <del>(increased)</del> <del>(decreased)</del> (unchanged) by :	ZERO ( ) days
The date of Substantial Completion as of the date of this Change Order therefore is:	NO CHANGE

# PROWEST CONSTRUCTORS

## CHANGE PROPOSAL REQUEST

**Project Name: Riverside Public Defender/Probation Building Project**  
**EDA Project & EDA Project No. : FM08240003992**  
**4075 Main Street**  
**Riverside, CA 92522**

**Architect's Project No.: RVC.043**  
**PTC CPR #: CO 03**  
**DATE: 10/30/17**

1 b. Releases, acquits and discharges THE OWNER, its officers, agents and employees from all liability, claims, damages, demands or costs, known or unknown, arising from the matters referred to in paragraph 1.a.

1 c. Expressly waives the provisions of section 1542 of the California Civil Code and understands that said section provides:

A GENERAL RELEASE DOES NOT EXTEND TO CLAIMS WHICH A CREDITOR DOES NOT KNOW OR SUSPECT TO EXIST IN HIS FAVOR AT THE TIME OF EXECUTING THE RELEASE, WHICH IF KNOWN BY HIM MUST HAVE MATERIALLY AFFECTED HIS SETTLEMENT WITH THE DEBTOR.

The parties acknowledge that this change has been reviewed by them and approved as to its form and content. The parties agree that this change order is to be construed and interpreted without regard to the identity of the party drafting this change order. Execution of this Change Order by all parties constitutes a binding agreement that no adjustment in compensation or time of performance shall be made as a result of the foregoing change(s), except as provided herein.

ProWest Constructors

BY: *[Signature]*  
BY: \_\_\_\_\_

DATE: 11-2-17  
DATE: \_\_\_\_\_

Accepted by Contractor

PTC: *[Signature]*  
BY: BOB MARS, COO

DATE: 11/2/17

County Of Riverside, EDA

\_\_\_ Accept  
\_\_\_ Do Not Accept  
\_\_\_ Reason Code

County Of Riverside, EDA

BY: \_\_\_\_\_ DATE: \_\_\_\_\_  
BY: \_\_\_\_\_ DATE: \_\_\_\_\_  
BY: \_\_\_\_\_ DATE: \_\_\_\_\_  
BY: \_\_\_\_\_ DATE: \_\_\_\_\_

Change Order Request

PW COTS NO. 111



C.O.R. # CN7-0006

G.C. #

Date: 1/27/2017

Project Name: CN7 / Riverside Public Defender

Project #: CN7

To: ProWest Constructors / CN7  
Attn: Todd Taylor  
22710 Palomar Street  
Wildomar, CA 92595

From: Best Contracting Services, Inc.  
Randy Ayala  
19027 S. Hamilton Ave.  
Gardena, CA 90248-4408

Phone: (951) 678-1038 Fax: (951) 678-1034

Phone: (310) 328-6969 Fax: (310) 380-6066

We hereby propose to make the following changes:

- 1) Install Temp Flashing at curbs, pipes, and drains.

Change Order Price \$3,213.27

This price is good for 15 days. If conditions change, this price is void.

We are requesting a time extension of 1 days in conjunction with this change.

Randy Ayala 1/27/2017  
Author Date Sent

Accepted The above prices and specifications of this Change Order request are satisfactory and are hereby accepted. All work to be performed under same terms and conditions as specified in original contract unless otherwise specified.

Authorized Signature Date of Acceptance

# Change Order Request

PW COTS NO. 111



C.O.R. # CN7-0006

G.C. #

Date: 1/27/2017

Project Name: CN7 / Riverside Public Defender

Project #: CN7

### Labor

Labor Type	Man Hrs	\$/Hr	Burden	Fringe	Total Tax	Total Labor
Roofer Foreman	6.00	\$79.48	\$0.00	\$0.00	\$0.00	\$476.88
Roofer Journeyman	15.00	\$72.41	\$0.00	\$0.00	\$0.00	\$1,086.15
Sub Total					\$0.00	\$1,563.03
Grand Total					\$0.00	\$1,563.03

### Materials

Materials	Quantity	Cost	Total Tax	Total Materials
Sarnavap / roll	1.00	\$360.00	\$26.80	\$386.80
Primer / pail	1.00	\$330.00	\$26.40	\$356.40
Caulking / tubes	8.00	\$11.50	\$7.36	\$99.36
Roller Frames / ea	2.00	\$5.50	\$0.88	\$11.88
Roller Naps / ea	2.00	\$3.25	\$0.52	\$7.02
Sub Total			\$63.96	\$863.46
Grand Total			\$63.96	\$863.46

### Equipment

Equipment	Quantity	Cost	Total Tax	Total Equipment
3/4 Ton Truck	1.00	\$340.00	\$0.00	\$340.00
Sub Total			\$0.00	\$340.00
Grand Total			\$0.00	\$340.00

Total	\$2,766.49
Profit	\$414.97
Bond	\$31.81
<b>Total</b>	<b>\$3,213.27</b>



Note: Temp Dry in at 8th floor  
Reb w/ patches. Approved By Derrick  
on 10/25/16 in email. Prior to Rain  
that is forecasted.

Field Change Order/Acceptance

Approval is hereby granted to Best Contracting Services, Inc. to proceed with the following changes to the project scope of work. It is understood that delay in approvals can result in extra charges for crew downtime/travel, remobilization etc.

Job Number: CN7-16A Tracking Code: 07541

Job Name: PUBLIC DEFENDERS

Site Address: \_\_\_\_\_ Building # MAIN UPPER ROOF

City: RIVERSIDE CA.

Scope of changed work: TEMP. WATER FIGHT w/ SARNA VAP  
PATCH- 19 PENETRATIONS 12'x12' + FLASHING 6 PIPES PENETRATION  
PATCH- 1 LUGER 2'x4' + 2- OPENINGS 36'x36" - PATCH 1- CONDENSATION  
DRAIN 24" x 24"

Work Location: MAIN UPPER ROOF.

Accepted by: TW Tjt Signature PCO # \_\_\_\_\_

Name: Todd Taylor Printed Title

Company Name: Prowest

Date: 10/26/16

Best Contracting Foreman/Superintendent: RICARDO MARTINEZ

Materials: 5- GALLONS OF PRIMER - 2- PAINT ROLLERS  
1- ROLL OF SARNA VAP 45'x100' - 8- TUBS  
SIRCA COILING

Labor: # Crew 4 Hours Each 6-8 Total Hrs. 24 hrs

Equipment: HAND TOOLS & PAINT ROLLERS.

Date Submitted: \_\_\_\_\_ By: \_\_\_\_\_ Approval

10/26/16

COUNTY OF RIVERSIDE ECONOMIC DEVELOPMENT AGENCY

CHANGE ORDER NO. CO7R1

Date: 2/8/2018

Project Name: Public Defender/Probation Building

To Contractor:

Schmitt Drywall  
4737 E. Somerton Avenue  
Orange, CA 92867

PeopleSoft Project No: FM 08240003992

Distribution:

- (1) Project Manager
- (2) Contractor
- (3) Fiscal
- (4) Construction Manager
- (5) Inspector
- (6) Architect/Engineer

You are directed to make the following changes. Changes shall include labor, material and equipment; each item to include all charges or indirect arising out of this work:

DESCRIPTION OF CHANGE	REASON FOR CHANGE ORDER	COR#	TYPE	AMOUNT
1) <u>Ceiling lowered to accommodate HVAC</u>	<u>Unforeseen Conditions</u>	<u>9</u>	<u>ADD</u>	<u>\$11,426.74</u>
2) <u>Coat to frame furred wall around exterior tube steel</u>	<u>Unforeseen Conditions</u>	<u>9</u>	<u>ADD</u>	<u>\$2,998.82</u>
3) <u>Patch holes for inspection of plumbing</u>	<u>Department Driven</u>	<u>9</u>	<u>ADD</u>	<u>\$549.31</u>
4) <u>Patch revised electrical locations</u>	<u>Owner Requested</u>	<u>9</u>	<u>ADD</u>	<u>\$1,275.42</u>
5) <u>Build furred wall around waste lines</u>	<u>Unforeseen Conditions</u>	<u>9</u>	<u>ADD</u>	<u>\$3,225.67</u>
6) <u>Framing terminations in west stairway - RFI 324</u>	<u>Unforeseen Conditions</u>	<u>9</u>	<u>ADD</u>	<u>\$1,598.50</u>
7) <u>Framing re-work for return air issue</u>	<u>Unforeseen Conditions</u>	<u>10</u>	<u>ADD</u>	<u>\$32,478.72</u>
8) <u>Added skim coat on cement walls - remove and replace drywall for re-inspection behind walls, credit for deductions of drywall ceilings</u>	<u>Unforeseen Conditions</u>	<u>12</u>	<u>ADD</u>	<u>\$6,186.79</u>
<b>TOTAL</b>				<b><u>\$89,740.87</u></b>

The specifications, where pertinent, shall apply to these changes.

This Change Order provides for a time extension of

Original Contract Duration (calendar days):	<u>185</u>	calendar days
Prior Authorized Time Extension (calendar days):	<u>356</u>	
Revised Construction Duration (calendar days):	<u>244</u>	
Original Contract Completion Date:	<u>705</u>	
Revised Contract Completion Date:	<u>3/29/2017</u>	
	<u>3/15/2018</u>	

NOTE: This change order is not effective until ALL signatures below are obtained, and if applicable, signature authority approval by Form 11 as indicated per Change Order Guidelines.

The undersigned contractor has given careful consideration to the change proposed, including its effect on other work already contracted for, and hereby agrees, if this change order is approved, that he will provide all equipment, furnish all materials, except as may otherwise be noted above, and perform all services necessary for the work above specified, and will accept as full payment for all costs related in any way thereto the prices shown above. Contractor expressly waives any contract right to pursue any further claim related to this change order work.

1) Tom Cahalan 2/14/18  
 Contractor (Signature) Date

Tom Cahalan  
 Contractor's Printed Name

Original Contract \$ 1,843,646.00  
 Prior Authorized  ADD  DEDUCT \$ 192,898.84  
 Total Contract Prior to this Change \$ 2,136,544.84

2) Chuck Washington 2/27/18  
 Assistant Director Date  
 CHUCK WASHINGTON  
 CHAIRMAN, BOARD OF SUPERVISORS

Authorized Changes on this Change Order: \$ 89,740.87

Vincent Coffey  
 Assistant Director  
 Printed Name

Amount of Contract Authorized including this Change Order \$ 2,186,285.81

3) John Hopkins 2-14-18  
 Construction Manager's (Signature) Date

Pursuant to:  Board Policy 8-11  
 M.O. and Date

John Hopkins  
 Construction Manager's Printed Name

Dominick Lombardi 2/14/18  
 Project Manager (Signature) Date

4) Tom Howell 2/14/18  
 Architect (Signature) Date

Dominick Lombardi  
 Project Manager's Printed Name

Tom Howell  
 Architect's Printed Name

EDA Change Order Form - Revised 11-18-14

FORM APPROVED COUNTY COUNSEL  
 BY: Synthia M. Gunzel 2-26-18  
 SYNTHIA M. GUNZEL DATE

FEB 27 2018 3.26

ATTEST:  
 KECIA HARPER-JHEM, Clerk  
 DEPUTY



**COUNTY OF RIVERSIDE ECONOMIC DEVELOPMENT AGENCY**

**CHANGE ORDER NO. CO7**

**Date:** 2/8/2018

**Project Name:** Public Defender/Probation Building

**To Contractor:**  
Schmitt Drywall  
4737 E. Somerton Avenue  
Orange, CA 92867

**PeopleSoft Project No:** FM 08240003992

**Distribution:**  
 (1) Project Manager (4) Construction Manager  
 (2) Contractor (5) Inspector  
 (3) Fiscal (6) Architect/Engineer

**You are directed to make the following changes. Changes shall include labor, material and equipment; each item to include all charges or indirect arising out of this work:**

DESCRIPTION OF CHANGE	REASON FOR CHANGE ORDER	COR#	TYPE	AMOUNT
1) Ceiling lowered to accommodate HVAC	Unforeseen Conditions	9	ADD	\$11,426.74
2) Cost to frame furred wall around exterior tube steel	Unforeseen Conditions	9	ADD	\$2,998.82
3) Patch holes for inspection of plumbing	Department Driven	9	ADD	\$549.31
4) Patch revised electrical locations	Owner Requested	9	ADD	\$1,275.42
5) Build furred wall around waste lines	Unforeseen Conditions	9	ADD	\$3,225.67
6) Framing terminations in west stairway - RFI 324	Unforeseen Conditions	9	ADD	\$1,598.50
7) Framing re-work for return air issue	Unforeseen Conditions	10	ADD	\$32,479.72
8) Added skim coat on cement walls - remove and replace drywall for re-inspection behind walls, credit for deletions of drywall ceilings	Unforeseen Conditions	12	ADD	\$6,186.79

**TOTAL** \$59,740.97

**The specifications, where pertinent, shall apply to these changes.**

**This Change Order provides for a time extension of** 105 **calendar days**

Original Contract Duration (calendar days):	<u>356</u>
Prior Authorized Time Extension (calendar days):	<u>244</u>
Revised Construction Duration (calendar days):	<u>705</u>
Original Contract Completion Date:	<u>3/29/2017</u>
Revised Contract Completion Date:	<u>3/15/2018</u>

**NOTE:** This change order is not effective until ALL signatures below are obtained, and if applicable, signature authority approval by Form 11 as indicated per Change Order Guidelines.

**The undersigned contractor has given careful consideration to the change proposed, including its effect on other work already contracted for, and hereby agrees, if this change order is approved, that he will provide all equipment, furnish all materials, except as may otherwise be noted above, and perform all services necessary for the work above specified, and will accept as full payment for all costs related in any way thereto the prices shown above. Contractor expressly waives any contract right to pursue any further claim related to this change order work.**

1) \_\_\_\_\_  
 Contractor (Signature) Date

Original Contract	\$	<u>1,943,646.00</u>
Prior Authorized <input checked="" type="checkbox"/> ADD <input type="checkbox"/> DEDUCT	\$	<u>192,898.84</u>
<b>Total Contract Prior to this Change</b>	<b>\$</b>	<b><u>2,136,544.84</u></b>

Contractor's Printed Name \_\_\_\_\_

Authorized Changes on this Change Order: \$ 59,740.97

2) \_\_\_\_\_  
 Assistant Director Date  
 (Signature)

Amount of Contract Authorized Including this Change Order \$ 2,196,285.81

Vincent Coffeen  
 Assistant Director  
 Printed Name

Pursuant to:  Board Policy B-11  
 M.O. and Date \_\_\_\_\_

3) \_\_\_\_\_  
 Construction Manager's (Signature) Date

John Hopkins  
 Construction Manager's Printed Name

4) \_\_\_\_\_  
 Project Manager (Signature) Date

Dominick Lombardi  
 Project Manager's Printed Name

5) \_\_\_\_\_  
 Architect (Signature) Date

Tom Howell  
 Architect's Printed Name

FORM APPROVED COUNTY COUNSEL  
 BY: Synthia M. Gunzel  
 DATE: 2-14-18

# **PROWEST**

---

## **CONSTRUCTORS**

### **CHANGE PROPOSAL REQUEST**

Project Name: Riverside Public Defender/Probation Building Project  
 EDA Project No. : FM08240003992  
 PTC: Schmitt Drywall  
 Contract No.: 011200.16  
 PTC Address: 4737 E. Somerton Ave.  
Orange, CA 92867

Architect's Project No.: RVC.043  
 PTC CPR #: CO 09  
 DATE: 08/21/17

**Schmitt Drywall** on behalf of itself and its subcontractors, suppliers, employees and trust funds of all tiers and all individuals and/or entities referred to in California Civil Code sections 3110, 3111, and 3112:

1 a. accepts the amount to be paid under this change order, and the time extensions granted by this change order, as payment in full for all costs, expenses and damages, known or unknown, direct or indirect (including without limitation, costs, expenses and damages resulting from delay, disruption, extended overhead, loss of productivity, impact, working out of sequence, acceleration, lost opportunity, etc.) incurred at any time (past, present or future) arising from:

**DESCRIPTION OF THE PROPOSED CHANGE:**

<b>Item No. 01</b>	<b>Reference:</b> Per RFI #333, Cost to add new soffit in RM.119 in order to terminate the ceiling into the glazing. Ceiling was lowered to accomidate HVAC. <b>Justification:</b> RFI #333 <b>Reference Documentation:</b> Subcontract Change Order Request	\$	11,426.74
<b>Item No. 02</b>	<b>Reference:</b> Cost to Frame furred wall around exterior tube steel that was overhanging the plane of exterior stud framing in RM.119 per RFI #320. <b>Justification:</b> RFI #320 <b>Reference Documentation:</b> Subcontract Change Order Request	\$	2,998.82
<b>Item No. 03</b>	<b>Reference:</b> Patch holes in room 417 and 527 for inspection of plumbing lines not inspected by Jim Rossman. <b>Justification:</b> Inspection Re-Work <b>Reference Documentation:</b> Subcontract Change Order Request	\$	549.31
<b>Item No. 04</b>	<b>Reference:</b> Cost to Patch all revised electrical locations changed per IB 5R1. <b>Justification:</b> IB5R1 Changes <b>Reference Documentation:</b> Subcontract Change Order Request	\$	1,275.42
<b>Item No. 05</b>	<b>Reference:</b> Cost to Build furred wall around waste lines outside of wall due to seismic upgrades on the 7th and 2nd floors per RFI #186R3 <b>Justification:</b> RFI #186R3 <b>Reference Documentation:</b> Subcontract Change Order Request	\$	3,225.67
<b>Item No. 06</b>	<b>Reference:</b> Cost for RFI 324 Framing Terminations into the windows in the west Stairway. <b>Justification:</b> RFI #324 <b>Reference Documentation:</b> Subcontract Change Order Request	\$	1,598.50
<b>Total Change Order:</b>			\$ 21,074.46

**Net Change in Calendar Days Due to This Proposed Change:** 0

Schedule impact to be evaluated at a later date.

The original (Contract Sum) was	\$	1,943,646.00
The net change by previously authorized Change Orders	\$	149,726.65
The (Contract Sum) prior to this Change Order was	\$	2,093,372.65
The (Contract Sum) will be ( <del>increased</del> )( <del>decreased</del> ) ( <del>unchanged</del> ) by this Change Order in the amount of	\$	21,074.46
The new (Contract Sum) including this Change Order will be	\$	2,114,447.11
The Contract Time will be ( <del>increased</del> ) ( <del>decreased</del> ) (unchanged) by :	ZERO	(0) days
The date of Substantial Completion as of the date of this Change Order therefore is:	<b>NO CHANGE</b>	

# PROWEST<sup>TM</sup>

---

## CONSTRUCTORS

### CHANGE PROPOSAL REQUEST

Project Name: Riverside Public Defender/Probation Building Project  
EDA Project / EDA Project No.: FM08240003992  
4075 Main Street  
Riverside, CA 92522

Architect's Project No.: RVC.043  
PTC CPR #: CO 09  
DATE: 08/21/17

1 b. Releases, acquits and discharges THE OWNER, its officers, agents and employees from all liability, claims, damages, demands or costs, known or unknown, arising from the matters referred to in paragraph 1.a.

1 c. Expressly waives the provisions of section 1542 of the California Civil Code and understands that said section provides:

A GENERAL RELEASE DOES NOT EXTEND TO CLAIMS WHICH A CREDITOR DOES NOT KNOW OR SUSPECT TO EXIST IN HIS FAVOR AT THE TIME OF EXECUTING THE RELEASE, WHICH IF KNOWN BY HIM MUST HAVE MATERIALLY AFFECTED HIS SETTLEMENT WITH THE DEBTOR.

The parties acknowledge that this change has been reviewed by them and approved as to its form and content. The parties agree that this change order is to be construed and interpreted without regard to the identity of the party drafting this change order. Execution of this Change Order by all parties constitutes a binding agreement that no adjustment in compensation or time of performance shall be made as a result of the foregoing change(s), except as provided herein.

ProWest Constructors

BY: *John Walsh*  
BY: \_\_\_\_\_

DATE: 8-31-17  
DATE: \_\_\_\_\_

Accepted by Contractor

PTC: Schmitt Drywall  
BY: *Tom Cable*

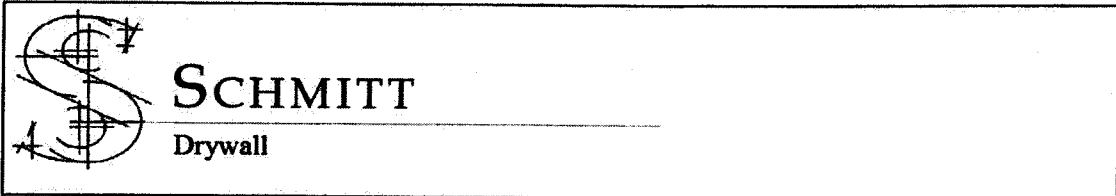
DATE: 8/22/17

County Of Riverside, EDA

\_\_\_\_ Accept  
\_\_\_\_ Do Not Accept  
\_\_\_\_ Reason Code

County Of Riverside, EDA

BY: \_\_\_\_\_ DATE: \_\_\_\_\_  
BY: \_\_\_\_\_ DATE: \_\_\_\_\_  
BY: \_\_\_\_\_ DATE: \_\_\_\_\_  
BY: \_\_\_\_\_ DATE: \_\_\_\_\_



**Subcontract Change Order**

Date: **July 5, 2017**

Bid Package Number 011200.10

**Prowest  
4075 Main Street  
Riverside, CA 92522  
Attention: Wesley**

SCI Change Order No. 054  
Owner Changer Order No. RFI 333  
Subcontractor Change Order No. 054

Project: Riverside Public Defender

This Subcontractor Change Order is in accordance with the terms of your Contract. Provide any and all revisions to your work as required by and in accordance with the COR's listed below:

<u>COR Title and Description</u>	<u>Amount</u>
Added soffit at room 119 per RFI 333.	\$ 11,426.74
	\$ -
	\$ -
	\$ -

The additional time allowed for this work is (0) calendar days.

Base Contract Price:	\$ 1,943,646.00
Approved Changes	\$ 181,643.31
Pending Changes	\$ 6,712.27
Total this Change	\$ 11,426.74
<b>Total Adjusted Contract:</b>	<b>\$ 2,143,428.32</b>

**Prowest**

Authorized By: \_\_\_\_\_  
(Please print name and Title)

Signature

Date: \_\_\_\_\_

**Schmitt Drywall**

Authorized By: \_\_\_\_\_  
Project Manager, Tom Cahalan

Date: 7/5/2017

## SUBCONTRACTOR CHANGE ORDER REQUEST

Requested by: Schmitt Drywall

DATE: 7/5/17

CHANGE IN WORK NOTIFICATION NO: RFI 333

Bid Package Number 011200.10

**PROJECT: Riverside Public Defender**

**LABOR:**

REF NUM	LABOR CLASSIFICATION	HOURS						HOURLY RATE	LABOR COST
		x1.0	x1.5	x2.0	DIFF	Swing	Grvyd		
1	Carpenter Foreman	17						\$ 77.79	\$ 1,322.43
2	Carpenter Journeyman	77						\$ 73.84	\$ 5,685.68
								<b>TOTAL LABOR:</b>	<b>\$ 7,008.11</b>

**MATERIALS:**

	MATERIAL DESCRIPTION	QTY	UNITS	UNIT COST	MATERIAL COST
1	400T150-68	120	LF	\$ 1.672	\$ 200.64
2	3/8" x 3" HILTI KH-EZ Anchors	3	Box	\$ 87.500	\$ 262.50
3	1 1/4" Hilti Shots and Pins	2	Box	\$ 66.500	\$ 133.00
4	Chop Saw Blades	2	EA	\$ 15.550	\$ 31.10
5	2" x 5" x 12" x 12 gauge clip	8	EA	\$ 5.080	\$ 40.64
6	400S162-43	580	LF	\$ 1.182	\$ 685.56
7	362S162-43	48	LF	\$ 1.073	\$ 51.50
8	400S162-54	80	LF	\$ 1.424	\$ 113.92
9	400T200-43	48	LF	\$ 1.559	\$ 74.83
10	2" x 2" x 18 gauge angle	48	LF	\$ 0.865	\$ 41.52
11	#10 SMS	1	Box	\$ 65.000	\$ 65.00
12	5/8" type X Drywall	288	SF	\$ 0.351	\$ 101.09
13	#6 Drywall Screws	1	Box	\$ 55.000	\$ 55.00
14	Tape	1	Roll	\$ 4.355	\$ 4.36
15	No Coat 450	1	Box	\$ 27.000	\$ 27.00
16	5/8" fast mask	40	LF	\$ 0.213	\$ 8.52
17	corner bead	48	LF	\$ 0.183	\$ 8.78
18	staples 506	1	Box	\$ 14.750	\$ 14.75
19	All Purpose	1	Box	\$ 9.620	\$ 9.62
20	Topping	4	Box	\$ 9.620	\$ 38.48
<b>TOTAL MATERIAL:</b>					<b>\$ 1,967.81</b>
(9 % of Line 2) <b>SALES TAX:</b>					<b>\$ 177.10</b>

**OTHER COSTS:**

	QTY	UNITS	UNIT COST	OTHER COST
Clean Up	0.8	Hours	\$ 73.84	\$ 59.07
Stocking Metal	924	LF	\$ 0.55	\$ 508.20
Stocking Drwyall	288	SF	\$ 0.75	\$ 216.00
<b>TOTAL OTHER COSTS:</b>				<b>\$ 783.27</b>

(Sum of Lines 1, 2, 3, and 4)	<b>SUBTOTAL:</b>	<b>\$ 9,936.30</b>
(15% of Line 5)	<b>MARK-UP:</b>	<b>\$ 1,490.44</b>
(Sum of Lines 5 and 6)	<b>SUBTOTAL:</b>	<b>\$ 11,426.74</b>

**SUB CONTRACTS**

SUBCONTRACTOR NAME / DESCRIPTION	COST	
	\$ -	
	\$ -	
<b>SUBCONTRACT COSTS:</b>		<b>\$ -</b>
<b>MARK-UP:</b>		<b>\$ -</b>
(Total of Lines 8 and 9)	<b>TOTAL SUBCONTRACT COSTS:</b>	<b>\$ -</b>

(Total of Lines 7 and 10) **GRAND TOTAL: \$ 11,426.74**





Schmitt Drywall Contracting  
 341 N. Berry Street, Brea, CA 92821  
 (714) 566-4036 Fax: (714) 582-2709

# Extra Work Order

RFI# 333

EWO No 1597

Job No.	Job Name Public Defender/ Riverside Probation Building	Customer ProWest	Date 10-20-2017	Cost Code 1-04-043
Description of Work: Continuation of work for RFI# 333 Added 50ft of				1-06-043
Work consisted of kickin clips with bolts & slatting frame				1-07-043
drops to order off angle track. Directed to proceed on TM				1-08-043
by John Hopkins with ProWest.				1-09-043
* More work to follow				1-01-043

MATERIAL	
QTY	DESCRIPTION
4 PCS	405150-43 @ 1/4"
1 Box	5/8" XU Filti Pins
1 Box	Red loads
2 PCS	Chop Saw blades
8 PCS	2" x 5" x 12" L Kick clips 12 GA.
10 PCS	3/8" x 3" KN-ETZ Anchors
8 PCS	405162-43 @ 1/4"
3 PCS	31025162-43 @ 1/4"
Subtotal	
Sales Tax @ %	
Total MATERIAL Cost	

LABOR								
TRADE	R	OT	DT	PT	DP	RATE	AMOUNT	
Supervision								
Carpenter Foreman	4							
Carpenter Journeyman	8							
Taper Foreman								
Taper Journeyman								
Plasterer								
Hodcarrier								
Laborer								
Lather								
NAME and TRADE								
K. Fremd - 4 HRS								
D. Romero - 4 HRS								
E. Nave - 4 HRS								
Total LABOR Cost								

MISCELLANEOUS		
QTY	DESCRIPTION	AMOUNT
	Trucking	
	Equipment Rental	
	Engineering	
	Subsistence	
	Other: Gas/Etc.	
TOTAL MISC. COST		

SUMMARY	
Total MATERIAL	
Total LABOR	
TOTAL Miscellaneous	
Overhead & Profit	
Bond	
<b>GRAND TOTAL</b>	

Work Authorized By:	Customer Work Authorization No.:	Schmitt PM
Company ProWest	Work to be continued? If yes, continued on EWO #	Schmitt Supervision
Signature TWT	Yes <input type="checkbox"/> No <input type="checkbox"/>	
Signature (Verify time & amt. only)		Signature

WHITE - Office      CANARY - Office      PINK - Foreman



Schmitt Drywall Contracting  
 341 N. Berry Street, Brea, CA 92821  
 (714) 566-4036 Fax: (714) 582-2709

# Extra Work Order

Rm #19 Added Soffit  
 RFI #333

EWO No 1600

Job No.	Job Name Public Defender Riverside Probation Bldg	Customer Pro West	Date 6/28/2017	Cost Code
Description of Work:				1-04-043
Continuation of stocking materials & bolting				1-06-043
Support track to deck for added soffit in Rm #19				1-07-043
open office 1st floor per RFI #333. Directed to				1-08-043
proceed on TEM by John Hopkins with Pro West				1-09-043
if more work to follow				1-01-043

MATERIAL	
QTY	DESCRIPTION
50 pcs	4005102-43 @ 10ft
4 pcs	4001155-63 @ 10ft
8 pcs	4005102-54 @ 10ft
4 pcs	400T200-43 Custom TRK @ 12ft
4 pcs	2"x2" 18ga Custom Angle @ 12ft
1 Box	#10 SMS
1 Box	3" x 3/8" Hilli KH-FZE Anchors
Subtotal	
Sales Tax @	%
Total MATERIAL Cost	

LABOR							
TRADE	R	OT	DT	PT	DP	RATE	AMOUNT
Supervision							
Carpenter Foreman							
Carpenter Journeyman	8						
Taper Foreman							
Taper Journeyman							
Plasterer							
Hodcarrier							
Laborer							
Lather							
NAME and TRADE							
E. Nava - 3 HRS							
J. Lomas - 3 HRS							
D. Rivera - 2 HRS							
Subtotal						Total LABOR Cost	

MISCELLANEOUS		
QTY	DESCRIPTION	AMOUNT
1	Trucking	250.00
	Equipment Rental	
	Engineering	
	Subsistence	
	Other: Gas/Etc.	
TOTAL MISC. COST		

SUMMARY	
Total MATERIAL	
Total LABOR	
TOTAL Miscellaneous	
Overhead & Profit	
Bond	
<b>GRAND TOTAL</b>	

Work Authorized By: John Hopkins	Customer Work Authorization No.:	Schmitt - PM
Company Pro West	Work to be continued? If yes, continued on EWO # Yes <input type="checkbox"/> No <input type="checkbox"/>	Schmitt Supervision Kevin [Signature]
Signature John Hopkins	Signature [Signature]	

WHITE - Office      CANARY - Office      PINK - Foreman







**ProWest Constructors**

**REQUEST FOR INTERPRETATION**

Riverside County Economic Development Agency  
Riverside, CA

**RFI No.:** 333

**TITLE:** Ceiling Termination in RM 119

**DATE:** 6/15/2017

**PTC:** Schmitt Contracting

**PROJECT :** Riverside Public Defender/Probation Building Project # FM08240003992

**TO:** Thomas Howell, AIA - Holt Architecture  
70225 Highway 111, Suite D  
Rancho Mirage, CA 92270

**REQUESTED:** 6/15/2017

**REQUIRED:** 6/22/2017

**ANSWERED:**

**QUESTION:**

Per our jobwalk on 6/14/17, please confirm that it is acceptable to terminate the ceiling into the exterior wall in RM 119 at a 45 degree angle to accommodate for the ceiling that was lowered to make room for the mechanical.

**DWG. / DETAIL REF:**

**PROPOSED SOLUTION:**

**Requested By:** Wesley Freeman      **Signed:** \_\_\_\_\_      **Date:** 6/15/2017

**ANSWER:**

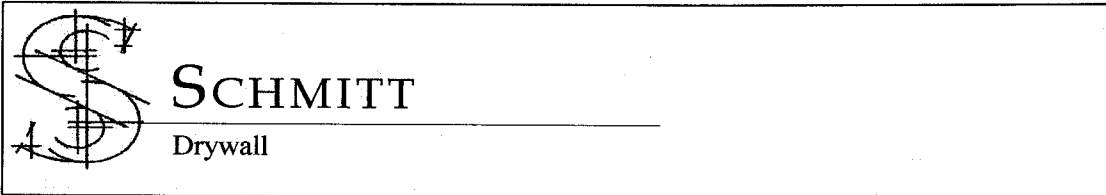
Confirmed.

**Answered By:** Tom Howell      **Signed:** \_\_\_\_\_      **Date:** 6/16/2017









**Subcontract Change Order**

Date: **July 5, 2017**

Bid Package Number 011200.10

**Prowest**  
**4075 Main Street**  
**Riverside, CA 92522**  
**Attention: Wesley**

SCI Change Order No. 055  
 Owner Changer Order No. RFI 320  
 Subcontractor Change Order No. 055

Project: Riverside Public Defender

This Subcontractor Change Order is in accordance with the terms of your Contract. Provide any and all revisions to your work as required by and in accordance with the COR's listed below:

<u>COR Title and Description</u>	<u>Amount</u>
Frame furred wall around exterior tube steel that was overhanging plane of exterior stud framing per RFI 320.	\$ 2,998.82
	\$ -
	\$ -
	\$ -

The additional time allowed for this work is (0) calendar days.

Base Contract Price:	\$ 1,943,646.00
Approved Changes	\$ 181,643.31
Pending Changes	\$ 18,139.01
Total this Change	\$ 2,998.82
<b>Total Adjusted Contract:</b>	<b>\$ 2,146,427.14</b>

**Prowest**  
 Authorized By: \_\_\_\_\_  
(Please print name and Title)  
 \_\_\_\_\_  
Signature

Date: \_\_\_\_\_

**Schmitt Drywall**  
 Authorized By: \_\_\_\_\_  
Project Manager, Tom Cahalan

Date: 7/5/2017

## SUBCONTRACTOR CHANGE ORDER REQUEST

Requested by: Schmitt Drywall

DATE: 7/5/17

CHANGE IN WORK NOTIFICATION NO: RFI 333

Bid Package Number 011200.10

**PROJECT: Riverside Public Defender**

**LABOR:**

REF NUM	LABOR CLASSIFICATION	HOURS						HOURLY RATE	LABOR COST
		x1.0	x1.5	x2.0	DIFF	Swing	Grvyd		
1	Carpenter Foreman	6						\$ 77.79	\$ 466.74
2	Carpenter Journeyman	18						\$ 73.84	\$ 1,329.12
<b>TOTAL LABOR:</b>									<b>\$ 1,795.86</b>

**MATERIALS:**

MATERIAL DESCRIPTION		QTY	UNITS	UNIT COST	MATERIAL COST
1	250S162-33	300	LF	\$ 0.608	\$ 182.40
2	250T150-33	60	LF	\$ 0.663	\$ 39.78
3	1 1/4" Hilti Shots and Pins	1	Box	\$ 66.500	\$ 66.50
4	2" x 20 gauge flat strap	60	LF	\$ 0.252	\$ 15.12
5	1 1/2" x 1 1/2" x 20 gauge angle	40	LF	\$ 0.345	\$ 13.80
6	#10 SMS	1	Box	\$ 65.000	\$ 65.00
7			LF	\$ -	\$ -
8			LF	\$ -	\$ -
9			LF	\$ -	\$ -
10			LF	\$ -	\$ -
11			Box	\$ -	\$ -
12			SF	\$ -	\$ -
13			Box	\$ -	\$ -
14			Roll	\$ -	\$ -
15			Box	\$ -	\$ -
<b>TOTAL MATERIAL:</b>					<b>\$ 382.60</b>
(9% of Line 2) <b>SALES TAX:</b>					<b>\$ 34.43</b>

**OTHER COSTS:**

	QTY	UNITS	UNIT COST	OTHER COST
Clean Up	1.92	Hours	\$ 73.84	\$ 141.77
Stocking Metal	460	LF	\$ 0.55	\$ 253.00
Stocking Drwyall	0	SF	\$ 0.75	\$ -
<b>TOTAL OTHER COSTS:</b>				<b>\$ 394.77</b>
(Sum of Lines 1, 2, 3, and 4) <b>SUBTOTAL:</b>				<b>\$ 2,607.67</b>
(15% of Line 5) <b>MARK-UP:</b>				<b>\$ 391.15</b>
(Sum of Lines 5 and 6) <b>SUBTOTAL:</b>				<b>\$ 2,998.82</b>

**SUB CONTRACTS**

SUBCONTRACTOR NAME / DESCRIPTION	COST	
	\$ -	
	\$ -	
<b>SUBCONTRACT COSTS:</b>	<b>\$ -</b> Line 8	
<b>MARK-UP:</b>	Line 9	
(Total of Lines 8 and 9) <b>TOTAL SUBCONTRACT COSTS:</b>	<b>\$ -</b>	
(Total of Lines 7 and 10) <b>GRAND TOTAL:</b>		<b>\$ 2,998.82</b>

Submitted by: Tom Cahalan

**Total Change Requested by Subcontractor:**

**\$ 2,998.82**

DATE: 7/5/17



**ProWest Constructors**

**REQUEST FOR INTERPRETATION**

**RFI No.:** 320

Riverside County Economic Development Agency  
Riverside, CA

**TITLE:** South Side Entrance Floor Plates

**DATE:** 6/2/2017

**PTC:** Schmitt Contracting

**PROJECT :** Riverside Public Defender/Probation Building Project # FM08240003992

**TO:** Thomas Howell, AIA - Holt Architecture  
70225 Highway 111, Suite D  
Rancho Mirage, CA 92270

**REQUESTED:** 6/2/2017

**REQUIRED:** 6/9/2017

**ANSWERED:**

**QUESTION:**

Please see attached photos of the condition around door E119. The structural steel floor plates extend passed where the new wall will be. We need to fur out this wall in order to cover the plates. Please advise if this is acceptable.

**DWG. / DETAIL REF:**

**PROPOSED SOLUTION:**

**Requested By:** Wesley Freeman      **Signed:** \_\_\_\_\_      **Date:** 6/2/2017

**ANSWER:**

Yes, this is acceptable.

**Answered By:** Tom Howell      **Signed:** \_\_\_\_\_      **Date:** 6/5/2017

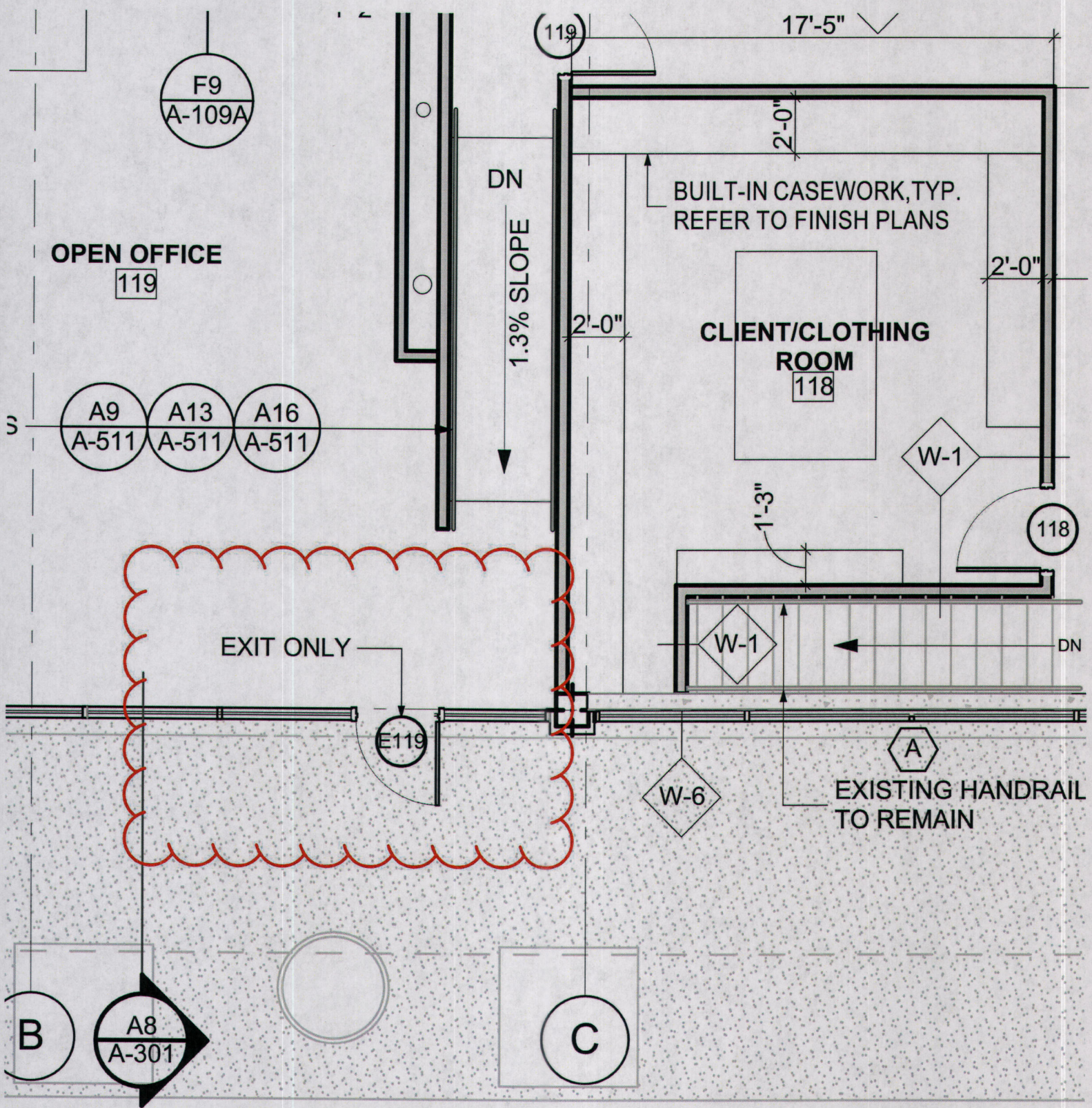




ADZ  
1151C  
1151C

ADZ  
1151C  
1151C







**SCHMITT**

Drywall

***Subcontract Change Order***

Date: **July 5, 2017**

Bid Package Number 011200.10

**Prowest  
4075 Main Street  
Riverside, CA 92522  
Attention: Wesley**

SCI Change Order No. 056  
Owner Changer Order No. Plumbing  
Subcontractor Change Order No. 056

Project: Riverside Public Defender

This Subcontractor Change Order is in accordance with the terms of your Contract. Provide any and all revisions to your work as required by and in accordance with the COR's listed below:

**COR Title and Description**

**Amount**

Patch holes in room 417 and 527 for inspection of plumbing lines	\$	549.31
	\$	-
	\$	-
	\$	-

The additional time allowed for this work is (0) calendar days.

Base Contract Price:	\$	<u>1,943,646.00</u>
Approved Changes	\$	<u>181,643.31</u>
Pending Changes	\$	<u>21,137.83</u>
Total this Change	\$	<u>549.31</u>
<b>Total Adjusted Contract:</b>	<b>\$</b>	<b><u>2,146,976.45</u></b>

**Prowest**

Authorized By: \_\_\_\_\_  
(Please print name and Title)

\_\_\_\_\_  
Signature

Date: \_\_\_\_\_

**Schmitt Drywall**

Authorized By: \_\_\_\_\_  
Project Manager, Tom Cahalan

Date: 7/5/2017

Schmitt Drywall, Inc.

Phone 714-255-0550 Ext 226

## SUBCONTRACTOR CHANGE ORDER REQUEST

Requested by: Schmitt Drywall

DATE: 7/5/17

CHANGE IN WORK NOTIFICATION NO: ~~12345~~

Bid Package Number 011200.10

PROJECT: Riverside Public Defender

**LABOR:**

REF NUM	LABOR CLASSIFICATION	HOURS						HOURLY RATE	LABOR COST
		x1.0	x1.5	x2.0	DIFF	Swing	Gryyd		
1	Carpenter Foreman	2						\$ 77.79	\$ 155.58
2	Carpenter Journeyman	3						\$ 73.84	\$ 221.52
<b>TOTAL LABOR:</b>									\$ 377.10

**MATERIALS:**

	MATERIAL DESCRIPTION	QTY	UNITS	UNIT COST	MATERIAL COST
1	5/8" Type X Drywall	40	SF	\$ 0.351	\$ 14.04
2	Tape	1	Roll	\$ 4.355	\$ 4.36
3	All Purpose	1	Box	\$ 9.620	\$ 9.62
4	Topping	1	LF	\$ 9.620	\$ 9.62
5				\$ -	\$ -
6				\$ -	\$ -
7				\$ -	\$ -
8				\$ -	\$ -
9				\$ -	\$ -
10				\$ -	\$ -
11				\$ -	\$ -
12				\$ -	\$ -
13				\$ -	\$ -
14				\$ -	\$ -
15				\$ -	\$ -
<b>TOTAL MATERIAL:</b>					\$ 37.64
(9% of Line 2) <b>SALES TAX:</b>					\$ 3.39

**OTHER COSTS:**

	QTY	UNITS	UNIT COST	OTHER COST
Clean Up	0.4	Hours	\$ 73.84	\$ 29.54
Stocking Metal	0	LF	\$ 0.55	\$ -
Stocking Drwyall	40	SF	\$ 0.75	\$ 30.00
<b>TOTAL OTHER COSTS:</b>				\$ 59.54
(Sum of Lines 1, 2, 3, and 4) <b>SUBTOTAL:</b>				\$ 477.66
(15% of Line 5) <b>MARK-UP:</b>				\$ 71.65
(Sum of Lines 5 and 6) <b>SUBTOTAL:</b>				\$ 549.31

**SUB CONTRACTS**

SUBCONTRACTOR NAME / DESCRIPTION	COST		
	\$ -		
	\$ -		
<b>SUBCONTRACT COSTS:</b>		\$ -	Line 8
<b>MARK-UP:</b>			Line 9
(Total of Lines 8 and 9) <b>TOTAL SUBCONTRACT COSTS:</b>		\$ -	
(Total of Lines 7 and 10) <b>GRAND TOTAL:</b>		\$ 549.31	

Submitted by: Tom Cahalan

**Total Change Requested by Subcontractor: \$ 549.31**

DATE: 7/5/17





RM # 527

Plumbing patch  
verification of

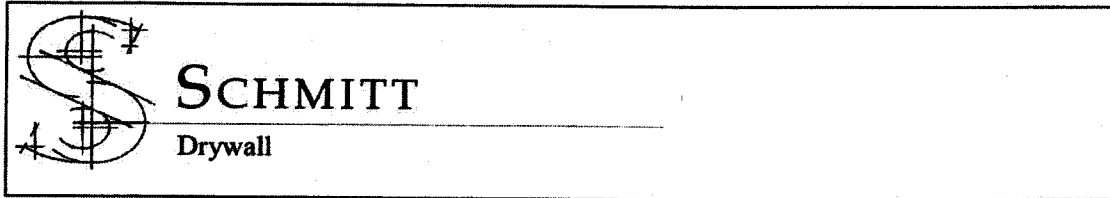
Fire  
cork



527

Rm # 417  
Plumbing patch  
Verification of  
Fire cork

417



**Subcontract Change Order**

Date: **July 5, 2017**

Bid Package Number 011200.10

**Prowest**  
**4075 Main Street**  
**Riverside, CA 92522**  
**Attention: Wesley**

SCI Change Order No. 057  
 Owner Changer Order No. IB 5  
 Subcontractor Change Order No. 057

Project: Riverside Public Defender

This Subcontractor Change Order is in accordance with the terms of your Contract. Provide any and all revisions to your work as required by and in accordance with the COR's listed below:

<u>COR Title and Description</u>	<u>Amount</u>
Patch electrical per IB 5	\$ 1,275.42
	\$ -
	\$ -
	\$ -

The additional time allowed for this work is (0) calendar days.

Base Contract Price:	\$ 1,943,646.00
Approved Changes	\$ 181,643.31
Pending Changes	\$ 21,687.14
Total this Change	\$ 1,275.42
<b>Total Adjusted Contract:</b>	<b>\$ 2,148,251.87</b>

**Prowest**  
 Authorized By: \_\_\_\_\_  
(Please print name and Title)  
 \_\_\_\_\_  
Signature  
 Date: \_\_\_\_\_

**Schmitt Drywall**  
 Authorized By: \_\_\_\_\_  
Project Manager, Tom Cahalan  
 Date: 7/5/2017

## SUBCONTRACTOR CHANGE ORDER REQUEST

Requested by: Schmitt Drywall

DATE: 7/5/17

CHANGE IN WORK NOTIFICATION NO: Patching Electrical

Bid Package Number 011200.10

**PROJECT: Riverside Public Defender**

**LABOR:**

REF NUM	LABOR CLASSIFICATION	HOURS						HOURLY RATE	LABOR COST
		x1.0	x1.5	x2.0	DIFF	Swing	Grvyd		
1	Carpenter Foreman	4						\$ 77.79	\$ 311.16
2	Carpenter Journeyman	7						\$ 73.84	\$ 516.88
<b>TOTAL LABOR:</b>									<b>\$ 828.04</b>

**MATERIALS:**

	MATERIAL DESCRIPTION	QTY	UNITS	UNIT COST	MATERIAL COST
1	5/8" Type X Drywall	120	SF	\$ 0.351	\$ 42.12
2	Tape	1	Roll	\$ 4.355	\$ 4.36
3	40 Minute Hot Mud	2	Bags	\$ 20.150	\$ 40.30
4	Topping	3	Boxes	\$ 9.620	\$ 28.86
5				\$ -	\$ -
6				\$ -	\$ -
7				\$ -	\$ -
8				\$ -	\$ -
9				\$ -	\$ -
10				\$ -	\$ -
11				\$ -	\$ -
12				\$ -	\$ -
13				\$ -	\$ -
14				\$ -	\$ -
15				\$ -	\$ -
<b>TOTAL MATERIAL:</b>					<b>\$ 115.64</b>
(9 % of Line 2) <b>SALES TAX:</b>					<b>\$ 10.41</b>

**OTHER COSTS:**

		QTY	UNITS	UNIT COST	OTHER COST
	Clean Up	0.88	Hours	\$ 73.84	\$ 64.98
	Stocking Metal	0	LF	\$ 0.55	\$ -
	Stocking Drwyall	120	SF	\$ 0.75	\$ 90.00
<b>TOTAL OTHER COSTS:</b>					<b>\$ 154.98</b>
(Sum of Lines 1, 2, 3, and 4) <b>SUBTOTAL:</b>					<b>\$ 1,109.06</b>
(15% of Line 5) <b>MARK-UP:</b>					<b>\$ 166.36</b>
(Sum of Lines 5 and 6) <b>SUBTOTAL:</b>					<b>\$ 1,275.42</b>

**SUB CONTRACTS**

SUBCONTRACTOR NAME / DESCRIPTION	COST	
	\$ -	
	\$ -	
<b>SUBCONTRACT COSTS:</b>	<b>\$ -</b> Line 8	
<b>MARK-UP:</b>	<b>\$ -</b> Line 9	
(Total of Lines 8 and 9) <b>TOTAL SUBCONTRACT COSTS:</b>	<b>\$ -</b>	
(Total of Lines 7 and 10) <b>GRAND TOTAL:</b>		<b>\$ 1,275.42</b>

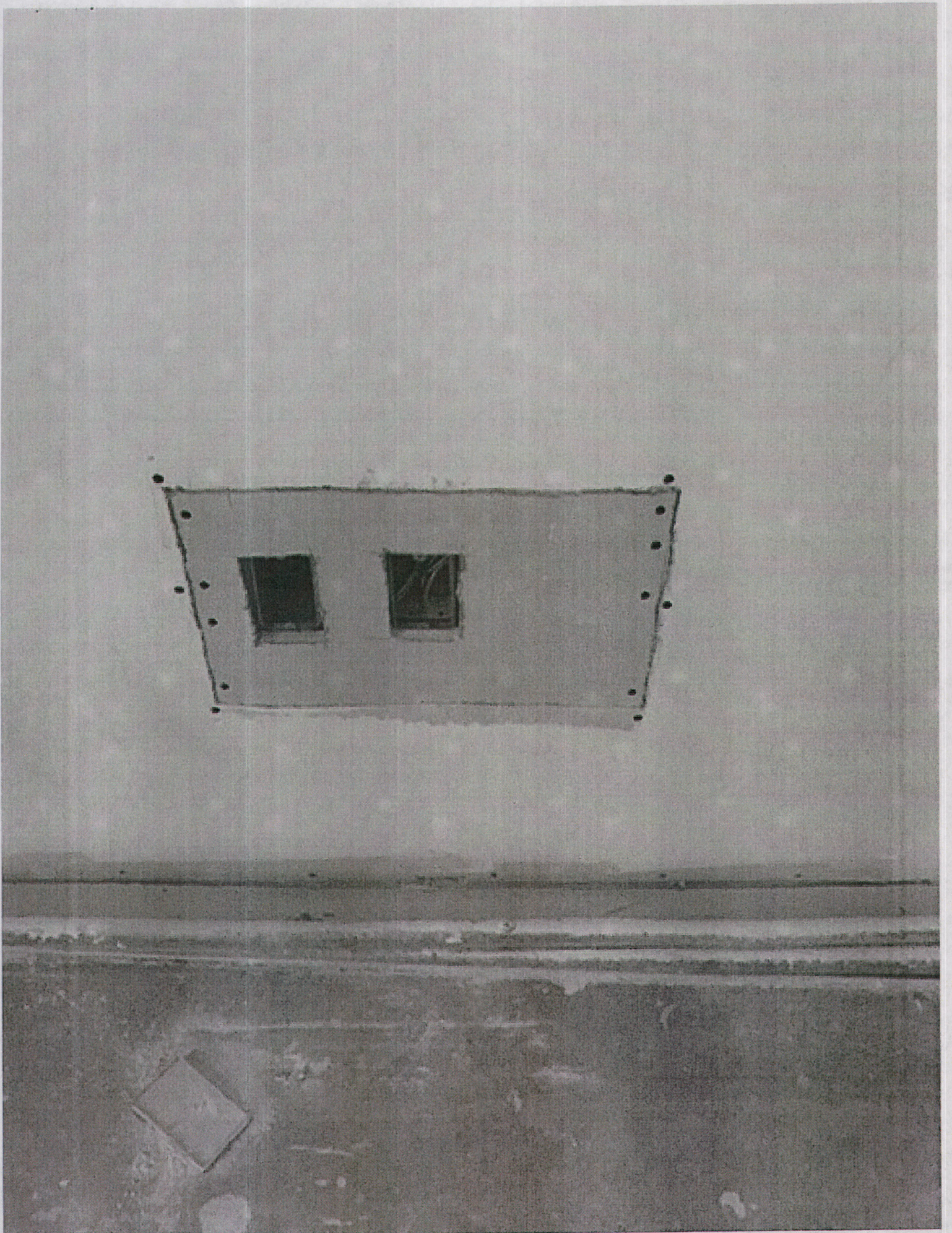
Submitted by: Tom Cahalan

**Total Change Requested by Subcontractor:**

**\$ 1,275.42**

DATE: 7/5/17







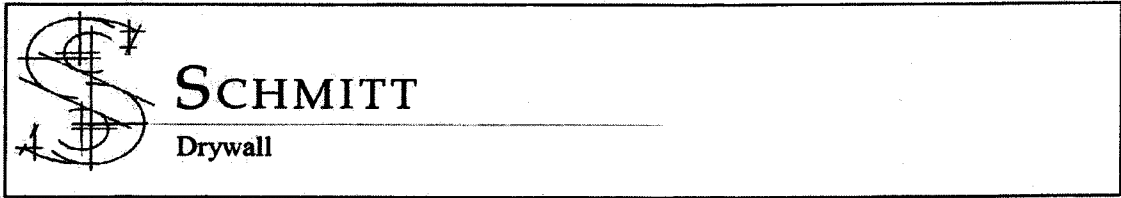












**Subcontract Change Order**

Date: **July 5, 2017**

Bid Package Number 011200.10

**Prowest  
4075 Main Street  
Riverside, CA 92522  
Attention: Wesley**

SCI Change Order No. 058  
Owner Changer Order No. Plumbing  
Subcontractor Change Order No. 058

Project: Riverside Public Defender

This Subcontractor Change Order is in accordance with the terms of your Contract. Provide any and all revisions to your work as required by and in accordance with the COR's listed below:

<u>COR Title and Description</u>	<u>Amount</u>
Build furred wall around waste lines outside of wall due to seismic upgrades on the 7th and 2nd floors	\$ 3,225.67
	\$ -
	\$ -
	\$ -

The additional time allowed for this work is (0) calendar days.

Base Contract Price:	\$ 1,943,646.00
Approved Changes	\$ 181,643.31
Pending Changes	\$ 22,962.56
Total this Change	\$ 3,225.67
<b>Total Adjusted Contract:</b>	<b>\$ 2,151,477.54</b>

**Prowest**  
Authorized By: \_\_\_\_\_

(Please print name and Title)

Signature

Date: \_\_\_\_\_

**Schmitt Drywall**

Authorized By: \_\_\_\_\_  
Project Manager, Tom Cahalan

Date: 7/5/2017

**SUBCONTRACTOR CHANGE ORDER REQUEST**

Requested by: Schmitt Drywall

DATE: 7/5/17

CHANGE IN WORK NOTIFICATION NO: [REDACTED]

Bid Package Number 011200.10

PROJECT: Riverside Public Defender

**LABOR:**

REF NUM	LABOR CLASSIFICATION	HOURS						HOURLY RATE	LABOR COST
		x1.0	x1.5	x2.0	DIFF	Swing	Grvyd		
1	Carpenter Foreman	3						\$ 77.79	\$ 233.37
2	Carpenter Journeyman	27						\$ 73.84	\$ 1,993.68
<b>TOTAL LABOR:</b>									<b>\$ 2,227.05</b>

**MATERIALS:**

	MATERIAL DESCRIPTION	QTY	UNITS	UNIT COST	MATERIAL COST
1	362T150-54	20	LF	\$ 1.213	\$ 24.26
2	362S162-43	80	Box	\$ 1.125	\$ 90.00
3	corner bead	40	LF	\$ 0.183	\$ 7.32
4	Chop Saw Blades	2	EA	\$ 15.550	\$ 31.10
5	5/8" type X Drywall	80	SF	\$ 0.351	\$ 28.08
6	Tape	1	Roll	\$ 4.355	\$ 4.36
7	All Purpose	2	Box	\$ 9.620	\$ 19.24
8	Topping	6	Box	\$ 9.620	\$ 57.72
<b>TOTAL MATERIAL:</b>					<b>\$ 262.08</b>
(9% of Line 2) <b>SALES TAX:</b>					<b>\$ 23.59</b>

**OTHER COSTS:**

		QTY	UNITS	UNIT COST	OTHER COST
	Clean Up	2.4	Hours	\$ 73.84	\$ 177.22
	Stocking Metal	100	LF	\$ 0.55	\$ 55.00
	Stocking Drwyall	80	SF	\$ 0.75	\$ 60.00
<b>TOTAL OTHER COSTS:</b>					<b>\$ 292.22</b>
				(Sum of Lines 1, 2, 3, and 4)	<b>SUBTOTAL: \$ 2,804.93</b>
				(15% of Line 5)	<b>MARK-UP: \$ 420.74</b>
				(Sum of Lines 5 and 6)	<b>SUBTOTAL: \$ 3,225.67</b>

**SUB CONTRACTS**

SUBCONTRACTOR NAME / DESCRIPTION	COST	
	\$ -	
	\$ -	
<b>SUBCONTRACT COSTS:</b>		<b>\$ -</b> Line 8
<b>MARK-UP:</b>		Line 9
(Total of Lines 8 and 9) <b>TOTAL SUBCONTRACT COSTS:</b>		<b>\$ -</b>
(Total of Lines 7 and 10) <b>GRAND TOTAL:</b>		<b>\$ 3,225.67</b>

Submitted by: Tom Cahalan

**Total Change Requested by Subcontractor: \$ 3,225.67**

DATE: 7/5/17



Schmitt Drywall Contracting  
 341 N. Berry Street, Brea, CA 92821  
 (714) 566-4036 Fax: (714) 582-2709

# Extra Work Order

2nd & 7th Floor  
 Plumbing Pipe furred  
 Columns  
 EWO No. 1594

Job No.	Job Name	Customer	Date	Cost Code
	Public defender/ Riverside Probation Building	ProWest	5/30/2017	1-04-043
Description of Work:				1-06-043
Directed to build furred columns on the 7th floor around exposed plumbing pipes from 6th & 2nd floor around exposed plumbing roof drains. Time included for frame hand & tape. Work was to be done on Tom directed by ProWest on Field. X work complete X				1-07-043
				1-08-043
				1-09-043
				1-01-043

MATERIAL	
QTY	DESCRIPTION
2 pcs	3625150-54 @ 10ft
8 pcs	3625162-43 @ 10ft
2 pcs	chop saw blades
2 pcs	4ft x 10ft x 5/8" Drywall @ 10ft
4 pcs	Corner bead @ 10ft
1 roll	Mesh TAPE
2 Boxes	All purpose Taping Mud
10 Boxes	Topping Mud
GRIP LINES E & S, 3, 4" WASTES	
LINE OUTSIDE WALL DUE TO SEISMIC UPGRADES.	
Subtotal	
Sales Tax @ %	
Total MATERIAL Cost	

LABOR								
TRADE	R	OT	DT	PT	DP	RATE	AMOUNT	
Supervision								
Carpenter Foreman								
Carpenter Journeyman								
Taper Foreman								
Taper Journeyman								
Plasterer								
Hodcarrier								
Laborer								
Lather								
NAME and TRADE								
K. Fern - 3 HRS								
O. Romero - 5 HRS								
E. Nera - 5 HRS								
D. Perez - 3 HRS								
D. Espinoza - 6 HRS								
J. Palacios - 8 HRS								
Total LABOR Cost								

MISCELLANEOUS		
QTY	DESCRIPTION	AMOUNT
	Trucking	
	Equipment Rental	
	Engineering	
	Subsistence	
	Other: Gas/Etc.	
TOTAL MISC. COST		

SUMMARY	
Total MATERIAL	
Total LABOR	
TOTAL Miscellaneous	
Overhead & Profit	
Bond	
GRAND TOTAL	

Work Authorized By: <i>Walter Jones only</i>	Customer Work Authorization No.:	Schmitt PM
Company: <i>ProWest</i>	Work to be continued? If yes, continued on EWO #	Schmitt Supervision <i>Kenneth Fern</i>
Signature	Signature	

WHITE - Office      CANARY - Office      PINK - Foreman

**ProWest Constructors**

**REQUEST FOR INTERPRETATION**

**RFI No.:** 186R3

Riverside County Economic Development Agency  
Riverside, CA

**TITLE:** Revised Plumbing Plan for RM-131

**DATE:** 5/4/2017

**PTC:** Empyrean Plumbing

**PROJECT :** Riverside Public Defender/Probation Building Project # FM08240003992

**TO:** Thomas Howell, AIA - Holt Architecture  
70225 Highway 111, Suite D  
Rancho Mirage, CA 92270

**REQUESTED:** 5/4/2017

**REQUIRED:** 5/11/2017

**ANSWERED:**

**QUESTION:**

The waste for the sink serving room 131 comes from the basement. We are currently up through the floor based on the original layout. The foundation wall in the basement is preventing the waste line from moving north to achieve the new room layout of RFI 186 without extensive demolition. We propose to run the waste line horizontal in the wall. This would likely require stud reinforcement. Please advise if the wall can sustain the 2.5" OD pipe horizontal for 5 feet. see attached sketch.

**DWG. / DETAIL REF:**

**PROPOSED SOLUTION:**

**Requested By:** Wesley Freeman      **Signed:** \_\_\_\_\_      **Date:** 5/4/2017

**ANSWER:**

**Answered By:** \_\_\_\_\_      **Signed:** \_\_\_\_\_      **Date:** \_\_\_\_\_

**Wesley Freeman**

---

**From:** Tom Howell  
**Sent:** Thursday, May 04, 2017 4:07 PM  
**To:** Wesley Freeman; Jeff Rising (jrising@prowestpcm.com)  
**Cc:** John Hopkins; John Davis; Steven Porter; Dominick Lombardi (dlombardi@rivco.org)  
**Subject:** ProWest RFI #186-R3 - Revised Plumbing Plan for RM-131  
**Attachments:** PW RFI #186R3 - Revised Plumbing Plan for RM-131[1].pdf

Wes/Jeff:

██  
██  
Either way please obtain/provide weight for the pipe.

Thanks, tom

---

**From:** Wesley Freeman [mailto:wfreeman@prowestpcm.com]  
**Sent:** Thursday, May 04, 2017 8:43 AM  
**To:** Steven Porter; Tom Howell  
**Cc:** John Hopkins; John Davis  
**Subject:** PW RFI #186-R3 - Revised Plumbing Plan for RM-131

Steven/Tom,

Please see attached PW RFI #186R3 - Revised Plumbing Plan for RM-131.

Thank You

**WESLEY FREEMAN**  
**PROJECT ENGINEER**  
**PROWEST CONSTRUCTORS**  
Mobile: 951-529-7266  
Email: [wfreeman@prowestpcm.com](mailto:wfreeman@prowestpcm.com)







**EMPYREAN  
PLUMBING, INC.**

P.O. Box 5680  
Riverside, CA 92517  
License No. 879157/C36, C-2, C34, & B  
(951) 776-4616  
Fax: 951-346-6676

## Request For Information

**1101 — Riverside Public Defender-Probation Building**

**RFI Subject : Breakroom #131 Plumbing**

**To** Wesley Freeman  
ProWest Constructors  
22710 Palomar Street  
Wildomar  
Wildomar, CA 92595  
(951) 529-7266(Mobile Phone)  
wfreeman@prowestpcm.com

**RFI Number : 1101-48**  
**RFI Revision Number : 0**  
RFI Date : 4/26/2017  
Type : Original RFI

**Return To** Nick Farmer  
Empyrean Plumbing, Inc.  
nick@empyreanplumbing.com

### Clarification Requested

The waste for the sink serving room 131 comes from the basement. We are currently up thru the floor based on the original layout. The foundation wall in the basement is preventing the waste line from moving north to achieve the new room layout of RFI 186 without extensive demolition. We propose to run the waste line horizontal in the wall. This would likely require stud reinforcement. Please advise if the wall can sustain the 2.5" OD pipe horizontal for 5 feet. see attached sketch.

### Details

Primary Activity Affected	Drawing	Detail	Spec
Above Ground - DWV	RFI 186		

### Schedule / Cost Impact

To mitigate schedule delay, return by the following date **5/3/2017**.

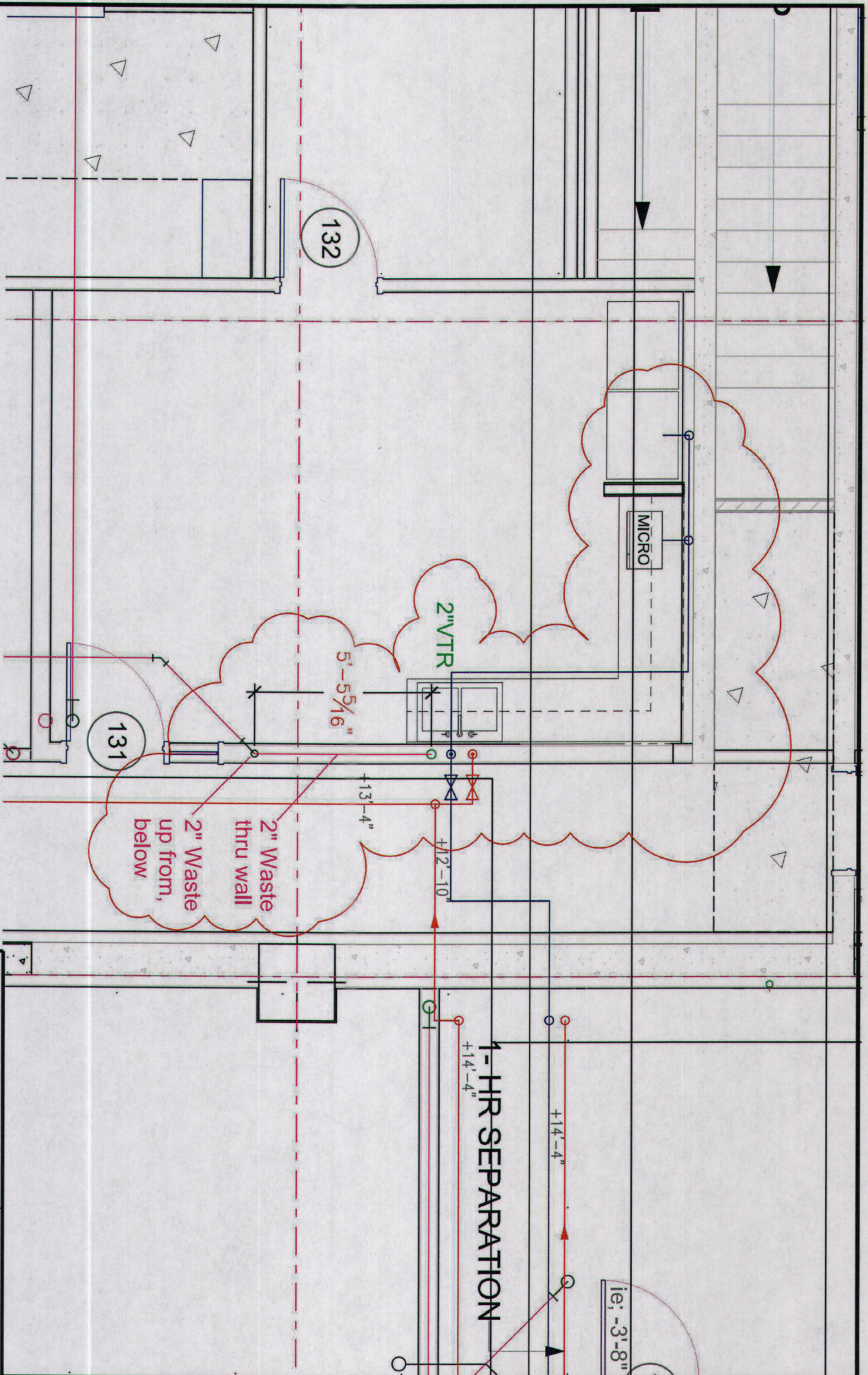
This problem is impacting our progress

This problem is impacting our costs (other than schedule costs)

*Please provide a written directive on how to proceed. Descriptions of materials and methods should be accompanied by drawings, sketches and specifications if not covered by applicable contract documents. Please re-review relevant submittals referenced above.*

**Signed By:** \_\_\_\_\_

**Dated:** 4/26/2017



DRAWING TITLE

Breakroom #131 Plumbing

**Emptyrean Plumbing, Inc.**

3404 NIHI WAY  
 Riverside, CA. 92507  
 TEL: 951.776.6316  
 FAX: 951.346.5675

PLAN NUMBER

EPI 2200.00

SCALE

None

FLOOR DATE

4.26.2017

SHEET NO

**SK-1**

**Wesley Freeman**

---

**From:** Tom C  
**Sent:** Tuesday, August 01, 2017 11:45 AM  
**To:** 'Wesley Freeman'  
**Cc:** stickel@schmittcontracting.com; 'Kevin'; sue@schmittdrywall.com  
**Subject:** RFI 324 Pricing - Small Lobby Stair Ceiling @ Floors 2-8

Frame – Hang – Tape Facia per RFI 324

Labor – 17.5 Hrs @ 73.84/Hour = \$1,292.20

Materials – 362T150-54 - 60 LF @1.21/LF = \$72.60

5/8" Type X Drywall – 60 SF @.351/SF = \$21.60

Taping – 60SF @ .06/SF = \$3.60

Total \$1,390.00

Mark Up 15% - \$208.50

**Total \$1,598.50**

# PROWEST<sup>TM</sup>

---

## CONSTRUCTORS

### CHANGE PROPOSAL REQUEST

Project Name: Riverside Public Defender/Probation Building Project	Architect's Project No.: RVC.043
EDA Project No. : FM08240003992	PTC CPR #: CO 10
PTC: Schmitt Drywall	DATE: 08/21/17
Contract No.: <u>011200.16</u>	
PTC Address: <u>4737 E. Somerton Ave.</u>	
<u>Orange, CA 92867</u>	

**Schmitt Drywall** on behalf of itself and its subcontractors, suppliers, employees and trust funds of all tiers and all individuals and/or entities referred to in California Civil Code sections 3110, 3111, and 3112:

1 a. accepts the amount to be paid under this change order, and the time extensions granted by this change order, as payment in full for all costs, expenses and damages, known or unknown, direct or indirect (including without limitation, costs, expenses and damages resulting from delay, disruption, extended overhead, loss of productivity, impact, working out of sequence, acceleration, lost opportunity, etc.) incurred at any time (past, present or future) arising from:

**DESCRIPTION OF THE PROPOSED CHANGE:**

<b>Item No. 01</b> <b>Reference:</b> Cost for rework for the returned air issues. Drywall rework and new Soffits. Floors 2-8 per RFI #305 <b>Justification:</b> RFI #305 <b>Reference Documentation:</b> Subcontract Change Order Request	\$ 32,479.72          <b>Total Change Order:</b> \$ 32,479.72
--	---

**Net Change in Calendar Days Due to This Proposed Change:** 0

Schedule impact to be evaluated at a later date.

The original (Contract Sum) was	\$ <u>1,943,646.00</u>
The net change by previously authorized Change Orders	\$ <u>202,697.77</u>
The (Contract Sum) prior to this Change Order was	\$ <u>2,146,343.77</u>
The (Contract Sum) will be (increased)-(decreased) (unchanged) by this Change Order in the amount of	\$ <u>32,479.72</u>
The new (Contract Sum) including this Change Order will be	\$ <u>2,178,823.49</u>
The Contract Time will be (increased) (decreased) (unchanged) by :	<u>ZERO (0) days</u>
The date of Substantial Completion as of the date of this Change Order therefore is:	<u>NO CHANGE</u>

# **PROWEST**

---

## **CONSTRUCTORS**

### **CHANGE PROPOSAL REQUEST**

**Project Name: Riverside Public Defender/Probation Building Project**  
**EDA Project # EDA Project No. : FM08240003992**  
**4075 Main Street**  
**Riverside, CA 92522**

**Architect's Project No.: RVC.043**  
**PTC CPR #: CO 10**  
**DATE: 08/21/17**

1 b. Releases, acquits and discharges THE OWNER, its officers, agents and employees from all liability, claims, damages, demands or costs, known or unknown, arising from the matters referred to in paragraph 1.a.

1 c. Expressly waives the provisions of section 1542 of the California Civil Code and understands that said section provides:

A GENERAL RELEASE DOES NOT EXTEND TO CLAIMS WHICH A CREDITOR DOES NOT KNOW OR SUSPECT TO EXIST IN HIS FAVOR AT THE TIME OF EXECUTING THE RELEASE, WHICH IF KNOWN BY HIM MUST HAVE MATERIALLY AFFECTED HIS SETTLEMENT WITH THE DEBTOR.

The parties acknowledge that this change has been reviewed by them and approved as to its form and content. The parties agree that this change order is to be construed and interpreted without regard to the identity of the party drafting this change order. Execution of this Change Order by all parties constitutes a binding agreement that no adjustment in compensation or time of performance shall be made as a result of the foregoing change(s), except as provided herein.

**ProWest Constructors**

BY: *[Signature]*  
BY: \_\_\_\_\_

DATE: 8-31-17  
DATE: \_\_\_\_\_

**Accepted by Contractor**

PTC: Schmitt Drywall  
BY: *[Signature]*

DATE: 8/22/17

**County Of Riverside, EDA**

\_\_\_\_ Accept  
\_\_\_\_ Do Not Accept  
\_\_\_\_ Reason Code

**County Of Riverside, EDA**

BY: \_\_\_\_\_ DATE: \_\_\_\_\_  
BY: \_\_\_\_\_ DATE: \_\_\_\_\_  
BY: \_\_\_\_\_ DATE: \_\_\_\_\_  
BY: \_\_\_\_\_ DATE: \_\_\_\_\_



**SCHMITT**

Drywall

***Subcontract Change Order***

Date: **September 12, 2017**

Bid Package Number 011200.10

**Prowest  
4075 Main Street  
Riverside, CA 92522  
Attention: Wesley**

SCI Change Order No. 062  
Owner Changer Order No. RFI 305  
Subcontractor Change Order No. 062

Project: Riverside Public Defender

This Subcontractor Change Order is in accordance with the terms of your Contract. Provide any and all revisions to your work as required by and in accordance with the COR's listed below:

<u>COR Title and Description</u>	<u>Amount</u>
Frame, hang, tape and trim additional soffits per RFI 305.	\$ 32,479.32
	\$ -
	\$ -
	\$ -

The additional time allowed for this work is (0) calendar days.

Base Contract Price:	\$ 1,943,646.00
Approved Changes	\$ 213,993.30
Pending Changes	\$ 6,712.27
Total this Change	\$ 32,479.32
<b>Total Adjusted Contract:</b>	<b>\$ 2,196,830.89</b>

**Prowest**

Authorized By: \_\_\_\_\_

(Please print name and Title)

Signature

Date: \_\_\_\_\_

**Schmitt Drywall**

Authorized By: \_\_\_\_\_

Project Manager, Tom Cahalan

Date: 9/12/2015

**SUBCONTRACTOR CHANGE ORDER REQUEST**

Requested by: Schmitt Drywall

DATE: 9/12/17

CHANGE IN WORK NOTIFICATION NO: RFI 305

Bid Package Number 011200.10

PROJECT: Riverside Public Defender

**LABOR:**

REF NUM	LABOR CLASSIFICATION	HOURS						HOURLY RATE	LABOR COST
		x1.0	x1.5	x2.0	DIFF	Swing	Grvyd		
1	Stock Materials	56						\$ 73.84	\$ 4,135.04
2	Frame Soffits	112						\$ 73.84	\$ 8,270.08
3	Hang Soffits	56						\$ 73.84	\$ 4,135.04
4	Trim/Tape Soffits	84						\$ 73.84	\$ 6,202.56
<b>TOTAL LABOR:</b>									<b>\$ 22,742.72</b>

**MATERIALS:**

	MATERIAL DESCRIPTION	QTY	UNITS	UNIT COST	MATERIAL COST
1	400T150-54	685	LF	\$ 1.309	\$ 896.67
2	400S162-33	560	LF	\$ 0.887	\$ 496.72
3	5/8Type X Drywall	1248	SF	\$ 0.360	\$ 449.28
4	1 1/2" Framing Angle	240	LF	\$ 0.650	\$ 156.00
5	Taping Materials	1248	SF	\$ 0.060	\$ 74.88
6	Corner Bead	410	LF	\$ 0.183	\$ 75.15
7		0	LF	\$ -	\$ -
8		0	LF	\$ -	\$ -
<b>TOTAL MATERIAL:</b>					<b>\$ 2,148.70</b>
(9 % of Line 2) <b>SALES TAX:</b>					<b>\$ 193.38</b>

**OTHER COSTS:**

		QTY	UNITS	UNIT COST	OTHER COST
	Clean Up	43.12	Hours	\$ 73.84	\$ 3,183.98
	Stocking Metal	0	LF	\$ 0.55	\$ -
	Stocking Drwyall	0	SF	\$ 0.75	\$ -
<b>TOTAL OTHER COSTS:</b>					<b>\$ 3,183.98</b>
(Sum of Lines 1, 2, 3, and 4) <b>SUBTOTAL:</b>					<b>\$ 28,268.78</b>
(15% of Line 5) <b>MARK-UP:</b>					<b>\$ 4,240.32</b>
(Sum of Lines 5 and 6) <b>SUBTOTAL:</b>					<b>\$ 32,509.10</b>

**SUB CONTRACTS**

SUBCONTRACTOR NAME / DESCRIPTION	COST	
	\$ -	
	\$ -	
<b>SUBCONTRACT COSTS:</b>		<b>\$ -</b> Line 8
<b>MARK-UP:</b>		<b>\$ -</b> Line 9
(Total of Lines 8 and 9) <b>TOTAL SUBCONTRACT COSTS:</b>		<b>\$ -</b>

(Total of Lines 7 and 10) **GRAND TOTAL:** \$ 32,509.10

Submitted by: Tom Cahalan

**Total Change Requested by Subcontractor:**

**\$ 32,479.32**

DATE: 9/12/17

# PROWEST CONSTRUCTORS

## CHANGE PROPOSAL REQUEST

Project Name: Riverside Public Defender/Probation Building Project  
 EDA Project No. : FM08240003992  
 PTC: Schmitt Drywall  
 Contract No.: 011200.16  
 PTC Address: 4737 E. Somerton Ave.  
Orange, CA 92867

Architect's Project No.: RVC.043  
 PTC CPR #: CO 12  
 DATE: 12/26/17

Schmitt Drywall on behalf of itself and its subcontractors, suppliers, employees and trust funds of all tiers and all individuals and/or entities referred to in California Civil Code sections 3110, 3111, and 3112:

1 a. accepts the amount to be paid under this change order, and the time extensions granted by this change order, as payment in full for all costs, expenses and damages, known or unknown, direct or indirect (including without limitation, costs, expenses and damages resulting from delay, disruption, extended overhead, loss of productivity, impact, working out of sequence, acceleration, lost opportunity, etc.) incurred at any time (past, present or future) arising from:

**DESCRIPTION OF THE PROPOSED CHANGE:**

- Item No. 01 **Reference:** Credit for RFI 305 added Drywall Ceilings that have changed to T-Bar. \$ (4,441.21)  
**Justification:** RFI #305  
**Reference Documentation:** Subcontract Change Order Request
  
- Item No. 02 **Reference:** Remove and replace drywall already hung and finish taped after approval by IOR. See attached floor plans for locations on floors 6 and 8. \$ 5,538.00  
**Justification:** IOR Request  
**Reference Documentation:** Subcontract Change Order Request
  
- Item No. 03 **Reference:** Cost to place labor on jobsite after carpenters took their annual raises. \$ 5,090.00  
 Original contract schedule for our scope of work was to be complete prior to the raise date.  
**Justification:** Labor Rate Increase out of contract  
**Reference Documentation:** Subcontract Change Order Request
  
- Item No. 04 **Reference:** Added skim coat on the cement walls on the 1st floor per RFI 364. \$ 1,228.00  
**Justification:** RFI #364  
**Reference Documentation:** Subcontract Change Order Request
  
- Item No. 05 **Reference:** Credit for the deletion of 13 exterior access panels not required per the fire code. \$ (1,257.00)  
**Justification:** RFI #365  
**Reference Documentation:** Subcontract Change Order Request

**Total Change Order:** \$ 6,186.79

**Net Change in Calendar Days Due to This Proposed Change:** 0

Schedule impact to be evaluated at a later date.

The original (Contract Sum) was	\$ 1,943,646.00
The net change by previously authorized Change Orders	\$ 246,453.02
The (Contract Sum) prior to this Change Order was	\$ 2,190,099.02
The (Contract Sum) will be (increased) <del>(decreased)</del> (unchanged) by this Change Order in the amount of	\$ 6,186.79
The new (Contract Sum) including this Change Order will be	\$ 2,196,285.81
The Contract Time will be (increased) <del>(decreased)</del> (unchanged) by :	ZERO (0) days
The date of Substantial Completion as of the date of this Change Order therefore is:	NO CHANGE



# PROWEST

---

## CONSTRUCTORS

### CHANGE PROPOSAL REQUEST

Project Name: Riverside Public Defender/Probation Building Project  
EDA Project # EDA Project No. : FM08240003992  
4075 Main Street  
Riverside, CA 92522

Architect's Project No.: RVC.043  
PTC CPR #: CO 12  
DATE: 12/26/17

1 b. Releases, acquits and discharges THE OWNER, its officers, agents and employees from all liability, claims, damages, demands or costs, known or unknown, arising from the matters referred to in paragraph 1.a.

1 c. Expressly waives the provisions of section 1542 of the California Civil Code and understands that said section provides:

A GENERAL RELEASE DOES NOT EXTEND TO CLAIMS WHICH A CREDITOR DOES NOT KNOW OR SUSPECT TO EXIST IN HIS FAVOR AT THE TIME OF EXECUTING THE RELEASE, WHICH IF KNOWN BY HIM MUST HAVE MATERIALLY AFFECTED HIS SETTLEMENT WITH THE DEBTOR.

The parties acknowledge that this change has been reviewed by them and approved as to its form and content. The parties agree that this change order is to be construed and interpreted without regard to the identity of the party drafting this change order. Execution of this Change Order by all parties constitutes a binding agreement that no adjustment in compensation or time of performance shall be made as a result of the foregoing change(s), except as provided herein.

ProWest Constructors

BY: John Hooper  
BY: \_\_\_\_\_

DATE: 1-2-2018  
DATE: \_\_\_\_\_

Accepted by Contractor

PTC: Schmitt Drywall  
BY: Tom Laker

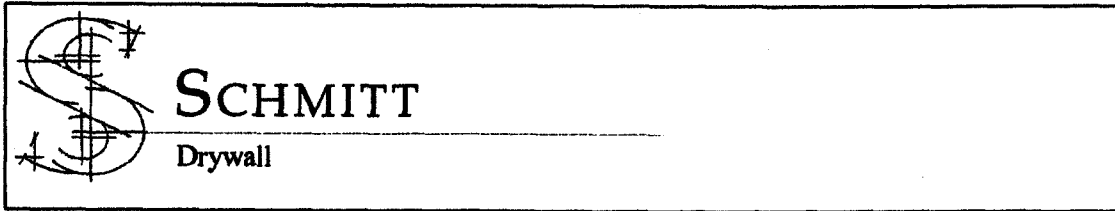
DATE: 1/2/18

County Of Riverside, EDA

\_\_\_\_ Accept  
\_\_\_\_ Do Not Accept  
\_\_\_\_ Reason Code

County Of Riverside, EDA

BY: \_\_\_\_\_ DATE: \_\_\_\_\_  
BY: \_\_\_\_\_ DATE: \_\_\_\_\_  
BY: \_\_\_\_\_ DATE: \_\_\_\_\_  
BY: \_\_\_\_\_ DATE: \_\_\_\_\_



**Subcontract Change Order**

Date: **August 30, 2017**

Bid Package Number 011200.10

**Prowest**  
**4075 Main Street**  
**Riverside, CA 92522**  
**Attention: Wesley**

SCI Change Order No. 064  
 Owner Changer Order No. RFI 305  
 Subcontractor Change Order No. 064

Project: Riverside Public Defender

This Subcontractor Change Order is in accordance with the terms of your Contract. Provide any and all revisions to your work as required by and in accordance with the COR's listed below:

<u>COR Title and Description</u>	<u>Amount</u>
Credit for RFI 305 added Drywall Ceilings that have changed to T-Bar.	\$ (4,441.21)
	\$ -
	\$ -
	\$ -

The additional time allowed for this work is (0) calendar days.

Base Contract Price:	\$ 1,943,646.00
Approved Changes	\$ 246,472.62
Pending Changes	\$ 6,712.27
Total this Change	\$ (4,441.21)
<b>Total Adjusted Contract:</b>	<b>\$ 2,192,389.68</b>

**Prowest**  
 Authorized By: \_\_\_\_\_  
(Please print name and Title)  
 \_\_\_\_\_  
Signature  
 Date: \_\_\_\_\_

**Schmitt Drywall**  
 Authorized By: \_\_\_\_\_  
Project Manager, Tom Cahalan  
 Date: 8/30/2017

## SUBCONTRACTOR CHANGE ORDER REQUEST

Requested by: Schmitt Drywall

DATE: 8/30/17

CHANGE IN WORK NOTIFICATION NO: RFI 305

Bid Package Number 011200.10

**PROJECT: Riverside Public Defender**

**LABOR:**

REF NUM	LABOR CLASSIFICATION	HOURS						HOURLY RATE	LABOR COST
		x1.0	x1.5	x2.0	DIFF	Swing	Gryyd		
1	Stocking	-4						\$ 77.79	\$ (311.16)
2	Frame Soffits	-12						\$ 73.84	\$ (886.08)
3	Hang Soffits	-14						\$ 73.84	\$ (1,033.76)
4	Trim/Tape Soffits	-16						\$ 73.84	\$ (1,181.44)
5		0						\$ 73.84	\$ -
<b>TOTAL LABOR:</b>									<b>\$ (3,412.44)</b>

**MATERIALS:**

	MATERIAL DESCRIPTION	QTY	UNITS	UNIT COST	MATERIAL COST
1	362T150-54	-220	LF	\$ 1.140	\$ (250.80)
2	362S162-33	-150	LF	\$ 0.773	\$ (115.95)
3	5/8 Type X Drywall	-111	SF	\$ 0.351	\$ (38.96)
4	Taping Materials	-111	SF	\$ 0.060	\$ (6.66)
<b>TOTAL MATERIAL:</b>					<b>\$ (412.37)</b>
(9 % of Line 2) <b>SALES TAX:</b>					<b>\$ (37.11)</b>

**OTHER COSTS:**

		QTY	UNITS	UNIT COST	OTHER COST
	Clean Up	0	Hours	\$ 73.84	\$ -
	Stocking Metal	0	LF	\$ 0.55	\$ -
	Stocking Drwyall	0	SF	\$ 0.75	\$ -
<b>TOTAL OTHER COSTS:</b>					<b>\$ -</b>

(Sum of Lines 1, 2, 3, and 4)	<b>SUBTOTAL:</b>	<b>\$ (3,861.92)</b>
(15% of Line 5)	<b>MARK-UP:</b>	<b>\$ (579.29)</b>
(Sum of Lines 5 and 6)	<b>SUBTOTAL:</b>	<b>\$ (4,441.21)</b>

**SUB CONTRACTS**

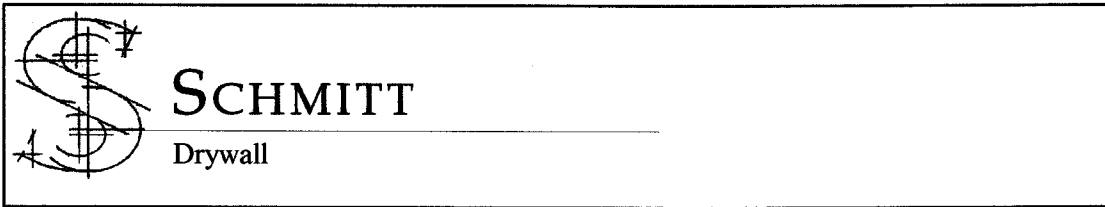
SUBCONTRACTOR NAME / DESCRIPTION	COST	
Canyon Insulation	\$ -	
	\$ -	
<b>SUBCONTRACT COSTS:</b>		<b>\$ -</b> <span style="float: right;">Line 8</span>
<b>MARK-UP:</b>		<b>\$ -</b> <span style="float: right;">Line 9</span>
<b>TOTAL SUBCONTRACT COSTS:</b>		<b>\$ -</b>

(Total of Lines 8 and 9)

(Total of Lines 7 and 10) **GRAND TOTAL: \$ (4,441.21)**

Submitted by: Tom Cahalan **Total Change Requested by Subcontractor: \$ (4,441.21)**

DATE: 8/30/17



**Subcontract Change Order**

Date: **November 15, 2017**

Bid Package Number 011200.10

**Prowest**  
**4075 Main Street**  
**Riverside, CA 92522**  
**Attention: Wesley**

SCI Change Order No. 065  
 Owner Changer Order No. Combacks  
 Subcontractor Change Order No. 065

Project: Riverside Public Defender

This Subcontractor Change Order is in accordance with the terms of your Contract. Provide any and all revisions to your work as required by and in accordance with the COR's listed below:

<u>COR Title and Description</u>		<u>Amount</u>
Remove and replace drywall allready hung and finish taped after direction to proceed was given.	\$	5,538.00
See attached floor plans for locations on floors 6 and 8.	\$	-
	\$	-
	\$	-

The additional time allowed for this work is (0) calendar days.

Base Contract Price:	\$	<u>1,943,646.00</u>
Approved Changes	\$	<u>246,472.62</u>
Pending Changes	\$	<u>-</u>
Total this Change	\$	<u>5,538.00</u>
<b>Total Adjusted Contract:</b>	<b>\$</b>	<b><u>2,195,656.62</u></b>

**Prowest**  
 Authorized By: \_\_\_\_\_  
(Please print name and Title)  
 \_\_\_\_\_  
Signature  
 Date: \_\_\_\_\_

**Schmitt Drywall**  
 Authorized By: \_\_\_\_\_  
Project Manager, Tom Cahalan  
 Date: 11/15/2017

## SUBCONTRACTOR CHANGE ORDER REQUEST

Requested by: Schmitt Drywall

DATE: 11/15/17

CHANGE IN WORK NOTIFICATION NO: Comebacks

Bid Package Number 011200.10

**PROJECT: Riverside Public Defender**

**LABOR:**

REF NUM	LABOR CLASSIFICATION	HOURS						HOURLY RATE	LABOR COST
		x1.0	x1.5	x2.0	DIFF	Swing	Grvyd		
1	Remove and Repace DW	36						\$ 73.84	\$ 2,658.24
2		0						\$ 73.84	\$ -
3	Re-finish DW Ceilings	18						\$ 73.84	\$ 1,329.12
4		0						\$ 73.84	\$ -
5		0						\$ 73.84	\$ -
<b>TOTAL LABOR:</b>									<b>\$ 3,987.36</b>

**MATERIALS:**

MATERIAL DESCRIPTION		QTY	UNITS	UNIT COST	MATERIAL COST
1	5/8Type X Drywall	680	SF	\$ 0.360	\$ 244.80
2	Taping Materials	680	SF	\$ 0.070	\$ 47.60
3		0	SF	\$ -	\$ -
4		0	SF	\$ -	\$ -
<b>TOTAL MATERIAL:</b>					<b>\$ 292.40</b>
(9 % of Line 2) <b>SALES TAX:</b>					<b>\$ 26.32</b>

**OTHER COSTS:**

		QTY	UNITS	UNIT COST	OTHER COST
	Clean Up	0	Hours	\$ 73.84	\$ -
	Stocking Metal	0	LF	\$ 0.55	\$ -
	Stocking Drwyall	680	SF	\$ 0.75	\$ 510.00
<b>TOTAL OTHER COSTS:</b>					<b>\$ 510.00</b>
(Sum of Lines 1, 2, 3, and 4)				<b>SUBTOTAL:</b>	<b>\$ 4,816.08</b>
(15% of Line 5)				<b>MARK-UP:</b>	<b>\$ 722.41</b>
(Sum of Lines 5 and 6)				<b>SUBTOTAL:</b>	<b>\$ 5,538.49</b>

**SUB CONTRACTS**

SUBCONTRACTOR NAME / DESCRIPTION		COST
Canyon Insulation		\$ -
		\$ -
<b>SUBCONTRACT COSTS:</b>		<b>\$ -</b> Line 8
<b>MARK-UP:</b>		<b>\$ -</b> Line 9
(Total of Lines 8 and 9) <b>TOTAL SUBCONTRACT COSTS:</b>		<b>\$ -</b>
(Total of Lines 7 and 10) <b>GRAND TOTAL:</b>		<b>\$ 5,538.49</b>

Submitted by: Tom Cahalan

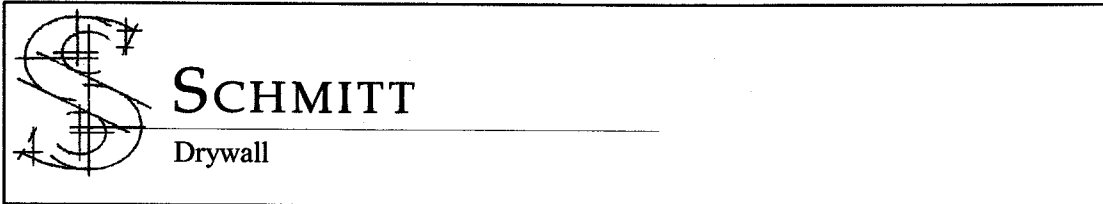
**Total Change Requested by Subcontractor:**

**\$ 5,538.00**

DATE: 11/15/17







***Subcontract Change Order***

Date: **November 27, 2017**

Bid Package Number 011200.10

**Prowest**  
**4075 Main Street**  
**Riverside, CA 92522**  
**Attention: Wesley**

SCI Change Order No. 066  
 Owner Changer Order No. Schedule  
 Subcontractor Change Order No. 066

Project: Riverside Public Defender

This Subcontractor Change Order is in accordance with the terms of your Contract. Provide any and all revisions to your work as required by and in accordance with the COR's listed below:

<u>COR Title and Description</u>	<u>Amount</u>
Cost to place labor on jobsite after carpenters took their annual raises. Original contract schedule for our scope of work was to be complete prior to the raise date.	\$ 5,090.00
	\$ -
	\$ -
	\$ -

The additional time allowed for this work is (0) calendar days.

Base Contract Price:	\$ 1,943,646.00
Approved Changes	\$ 246,472.62
Pending Changes	\$ 5,538.00
Total this Change	\$ 5,090.00
<b>Total Adjusted Contract:</b>	<b>\$ 2,200,746.62</b>

**Prowest**  
 Authorized By: \_\_\_\_\_  
 (Please print name and Title)

Signature

Date: \_\_\_\_\_

**Schmitt Drywall**  
 Authorized By: \_\_\_\_\_  
 Project Manager, Tom Cahalan

Date: 11/27/2017



**SUBCONTRACTOR CHANGE ORDER REQUEST**

Requested by: Schmitt Drywall

DATE: 11/27/17

CHANGE IN WORK NOTIFICATION NO: Contract Extension  
Bid Package Number 011200.10

PROJECT: Riverside Public Defender

**LABOR:**

REF NUM	LABOR CLASSIFICATION	HOURS						HOURLY RATE	LABOR COST
		x1.0	x1.5	x2.0	DIFF	Swing	Grvyd		
1	Carpenter Hours	2159						\$ 2.05	\$ 4,425.95
2		0						\$ -	\$ -
3		0						\$ -	\$ -
4		0						\$ -	\$ -
5		0						\$ -	\$ -
<b>TOTAL LABOR:</b>									\$ 4,425.95

**MATERIALS:**

	MATERIAL DESCRIPTION	QTY	UNITS	UNIT COST	MATERIAL COST
1		0	SF	\$ -	\$ -
2		0	SF	\$ -	\$ -
3		0	SF	\$ -	\$ -
4		0	SF	\$ -	\$ -
<b>TOTAL MATERIAL:</b>					\$ -
(9 % of Line 2) <b>SALES TAX:</b>					\$ -

**OTHER COSTS:**

		QTY	UNITS	UNIT COST	OTHER COST
	Clean Up	0	Hours	\$ 73.84	\$ -
	Stocking Metal	0	LF	\$ 0.55	\$ -
	Stocking Drwyall	0	SF	\$ 0.75	\$ -
<b>TOTAL OTHER COSTS:</b>					\$ -
(Sum of Lines 1, 2, 3, and 4) <b>SUBTOTAL:</b>					\$ 4,425.95
(15% of Line 5) <b>MARK-UP:</b>					\$ 663.89
(Sum of Lines 5 and 6) <b>SUBTOTAL:</b>					\$ 5,089.84

**SUB CONTRACTS**

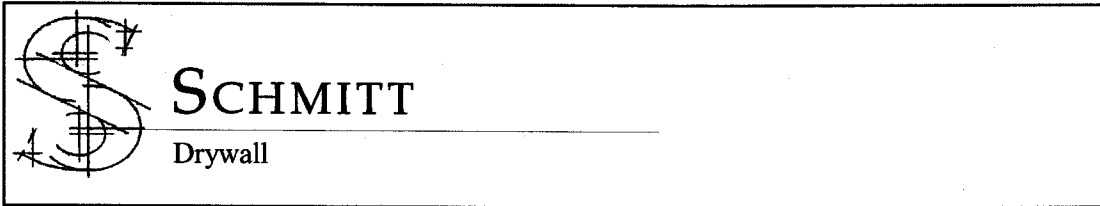
SUBCONTRACTOR NAME / DESCRIPTION	COST		
Canyon Insulation	\$ -		
	\$ -		
<b>SUBCONTRACT COSTS:</b>		\$ -	Line 8
<b>MARK-UP:</b>		\$ -	Line 9
(Total of Lines 8 and 9) <b>TOTAL SUBCONTRACT COSTS:</b>		\$ -	
(Total of Lines 7 and 10) <b>GRAND TOTAL:</b>		\$ 5,089.84	

Submitted by: Tom Cahalan

**Total Change Requested by Subcontractor:**

**\$ 5,090.00**

DATE: 11/27/17



***Subcontract Change Order***

Date: **November 27, 2017**

Bid Package Number 011200.10

**Prowest**  
**4075 Main Street**  
**Riverside, CA 92522**  
**Attention: Wesley**

SCI Change Order No. 067  
 Owner Changer Order No. RFI 364  
 Subcontractor Change Order No. 067

Project: Riverside Public Defender

This Subcontractor Change Order is in accordance with the terms of your Contract. Provide any and all revisions to your work as required by and in accordance with the COR's listed below:

<u>COR Title and Description</u>	<u>Amount</u>
Added skim coat per RFI 364.	\$ 1,228.00
	\$ -
	\$ -
	\$ -

The additional time allowed for this work is (0) calendar days.

Base Contract Price:	\$ 1,943,646.00
Approved Changes	\$ 246,472.62
Pending Changes	\$ 10,628.00
Total this Change	\$ 1,228.00
<b>Total Adjusted Contract:</b>	<b>\$ 2,201,974.62</b>

**Prowest**

Authorized By: \_\_\_\_\_  
 (Please print name and Title)

\_\_\_\_\_  
 Signature

Date: \_\_\_\_\_

**Schmitt Drywall**

Authorized By: \_\_\_\_\_  
 Project Manager, Tom Cahalan

Date: 11/27/2017

**SUBCONTRACTOR CHANGE ORDER REQUEST**

Requested by: Schmitt Drywall

DATE: 11/27/17

CHANGE IN WORK NOTIFICATION NO: RFI 364

Bid Package Number 011200.10

PROJECT: Riverside Public Defender

**LABOR:**

REF NUM	LABOR CLASSIFICATION	HOURS						HOURLY RATE	LABOR COST
		x1.0	x1.5	x2.0	DIFF	Swing	Gryyd		
1	Tapers	13						\$ 73.84	\$ 959.92
2		0						\$ -	\$ -
3		0						\$ -	\$ -
4		0						\$ -	\$ -
5		0						\$ -	\$ -
<b>TOTAL LABOR:</b>									<b>\$ 959.92</b>

**MATERIALS:**

MATERIAL DESCRIPTION		QTY	UNITS	UNIT COST	MATERIAL COST
1	Topping	11	Boces	\$ 9.000	\$ 99.00
2		0	SF	\$ -	\$ -
3		0	SF	\$ -	\$ -
4		0	SF	\$ -	\$ -
<b>TOTAL MATERIAL:</b>					<b>\$ 99.00</b>
(9% of Line 2) <b>SALES TAX:</b>					<b>\$ 8.91</b>

**OTHER COSTS:**

		QTY	UNITS	UNIT COST	OTHER COST
	Clean Up	0	Hours	\$ 73.84	\$ -
	Stocking Metal	0	LF	\$ 0.55	\$ -
	Stocking Drwyall	0	SF	\$ 0.75	\$ -
<b>TOTAL OTHER COSTS:</b>					<b>\$ -</b>
(Sum of Lines 1, 2, 3, and 4) <b>SUBTOTAL:</b>					<b>\$ 1,067.83</b>
(15% of Line 5) <b>MARK-UP:</b>					<b>\$ 160.17</b>
(Sum of Lines 5 and 6) <b>SUBTOTAL:</b>					<b>\$ 1,228.00</b>

**SUB CONTRACTS**

SUBCONTRACTOR NAME / DESCRIPTION		COST
Canyon Insulation		\$ -
		\$ -
<b>SUBCONTRACT COSTS:</b>		<b>\$ -</b> Line 8
<b>MARK-UP:</b>		<b>\$ -</b> Line 9
(Total of Lines 8 and 9) <b>TOTAL SUBCONTRACT COSTS:</b>		<b>\$ -</b>
(Total of Lines 7 and 10) <b>GRAND TOTAL:</b>		<b>\$ 1,228.00</b>

Submitted by: Tom Cahalan

**Total Change Requested by Subcontractor:**

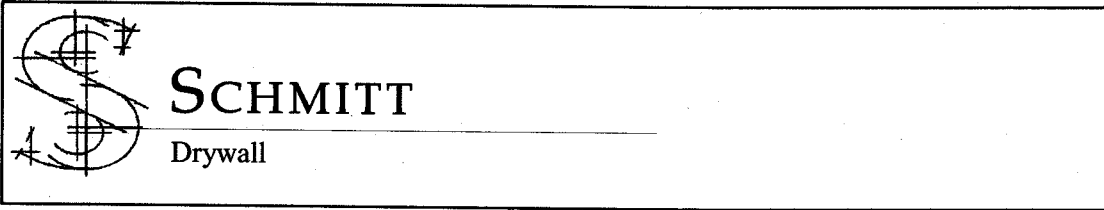
**\$ 1,228.00**

DATE: 11/27/17









**Subcontract Change Order**

Date: **December 21, 2017**

Bid Package Number 011200.10

**Prowest**  
**4075 Main Street**  
**Riverside, CA 92522**  
**Attention: Wesley**

SCI Change Order No. 067  
 Owner Changer Order No. Access Doors  
 Subcontractor Change Order No. 067

Project: Riverside Public Defender

This Subcontractor Change Order is in accordance with the terms of your Contract. Provide any and all revisions to your work as required by and in accordance with the COR's listed below:

<u>COR Title and Description</u>	<u>Amount</u>
Credit for deletion of exterior access doors	\$ (1,257.00)
	\$ -
	\$ -
	\$ -

The additional time allowed for this work is (0) calendar days.

Base Contract Price:	\$ 1,943,646.00
Approved Changes	\$ 246,472.62
Pending Changes	\$ 11,855.55
Total this Change	\$ (1,257.00)
<b>Total Adjusted Contract:</b>	<b>\$ 2,200,717.17</b>

**Prowest**  
 Authorized By: \_\_\_\_\_  
 (Please print name and Title)

\_\_\_\_\_  
 Signature

Date: \_\_\_\_\_

**Schmitt Drywall**  
 Authorized By: \_\_\_\_\_  
 Project Manager, Tom Cahalan

Date: 12/21/2017

## SUBCONTRACTOR CHANGE ORDER REQUEST

Requested by: Schmitt Drywall

DATE: 12/21/17

CHANGE IN WORK NOTIFICATION NO: Exterior Access Do

Bid Package Number 011200.10

**PROJECT: Riverside Public Defender**

**LABOR:**

REF NUM	LABOR CLASSIFICATION	HOURS						HOURLY RATE	LABOR COST
		x1.0	x1.5	x2.0	DIFF	Swing	Grvyd		
1	Credit for install of access doors	-13						\$ 73.84	\$ (959.92)
2		0						\$ 73.84	\$ -
3		0						\$ 73.84	\$ -
4		0						\$ 73.84	\$ -
5		0						\$ 73.84	\$ -

**TOTAL LABOR:** \$ (959.92)

**MATERIALS:**

MATERIAL DESCRIPTION		QTY	UNITS	UNIT COST	MATERIAL COST
1	Access Doors	-13	SF	\$ 21.000	\$ (273.00)
2		0	SF	\$ -	\$ -
3		0	SF	\$ -	\$ -
4		0	SF	\$ -	\$ -

**TOTAL MATERIAL:** \$ (273.00)

(9 % of Line 2) **SALES TAX:** \$ (24.57)

**OTHER COSTS:**

		QTY	UNITS	UNIT COST	OTHER COST
	Clean Up	0	Hours	\$ 73.84	\$ -
	Stocking Metal	0	LF	\$ 0.55	\$ -
	Stocking Drwyall	0	SF	\$ 0.75	\$ -

**TOTAL OTHER COSTS:** \$ -

(Sum of Lines 1, 2, 3, and 4) **SUBTOTAL:** \$ (1,257.49)

(15% of Line 5) **MARK-UP:** \$ -

(Sum of Lines 5 and 6) **SUBTOTAL:** \$ (1,257.49)

**SUB CONTRACTS**

SUBCONTRACTOR NAME / DESCRIPTION	COST
Canyon Insulation	\$ -
	\$ -

**SUBCONTRACT COSTS:** \$ - Line 8

**MARK-UP:** \$ - Line 9

(Total of Lines 8 and 9) **TOTAL SUBCONTRACT COSTS:** \$ -

(Total of Lines 7 and 10) **GRAND TOTAL:** \$ (1,257.49)

Submitted by: Tom Cahalan

**Total Change Requested by Subcontractor:** \$ (1,257.00)

DATE: 12/21/17





