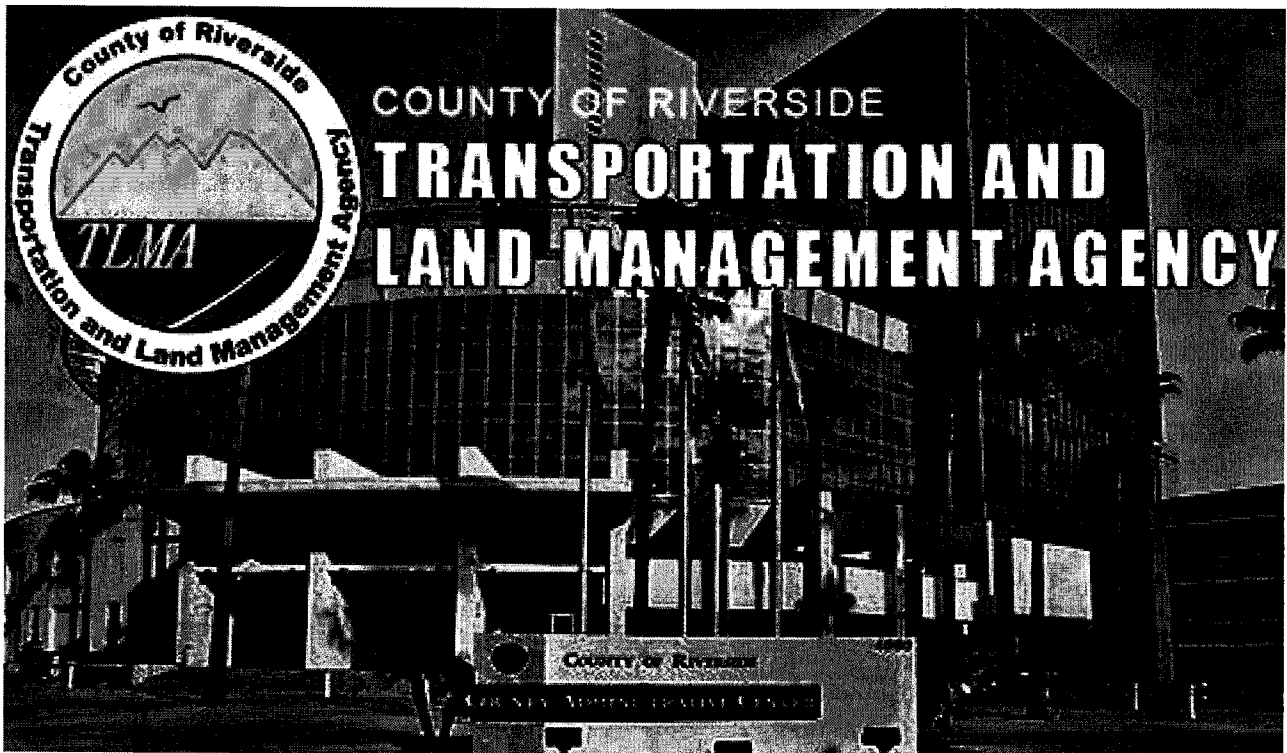


PSOMAS

**COUNTY OF RIVERSIDE
TRANSPORTATION DEPARTMENT**



ENGINEER'S REPORT

VOLUME 3

**FISCAL YEAR 2018–2019
LANDSCAPING AND LIGHTING DISTRICT NO.89-1-CONSOLIDATED**

STREET LIGHTING ZONES 2–110

PREPARED BY
Psomas
1500 Iowa Avenue, Suite 210
Riverside, CA 92507
951.787.8421
www.psomas.com

May 2018

AGENCY: COUNTY OF RIVERSIDE TRANSPORTATION DEPARTMENT

**PROJECT: LANDSCAPING AND LIGHTING MAINTENANCE
DISTRICT NO. 89-1-CONSOLIDATED**

**TO: BOARD OF SUPERVISORS
COUNTY OF RIVERSIDE
STATE OF CALIFORNIA**

ENGINEER'S REPORT FISCAL YEAR 2018-19

**LANDSCAPING AND LIGHTING ACT OF 1972, DIVISION 15 OF THE
STREETS AND HIGHWAYS CODE OF THE STATE OF CALIFORNIA**

Pursuant to the provisions of Section 22565 through 22574 of the Landscaping and Lighting Act of 1972, said act being Part 2 of Division 15 of the Streets and Highways Code of the State of California, Section 4 of Article XIII(D) of the California Constitution, and direction from the Board of Supervisors of Riverside County, California, submitted herewith is the Engineer's Report for Landscaping and Lighting Maintenance District No. 89-1-Consolidated ("Report"), consisting of five parts.

WHEREAS, the Board of Supervisors of the County of Riverside, State of California, did, pursuant to the provisions of the Landscaping and Lighting Act of 1972, being Division 15 of the Streets and Highways Code of the State of California, adopt Resolution No. 94-389 to initiate proceedings to form a special assessment district known and designated as:

Landscaping and Lighting Maintenance District No. 89-1-Consolidated ("L&LMD No. 89-1-C" or "District"); and,

WHEREAS, the Board of Supervisors, did direct the appointed Engineer to make and file an annual Report, in accordance with Article 4 (commencing with Section 22565) of Chapter 1 of Part 2 of Division 15 of the Streets and Highways Code, being an article of the aforementioned Landscaping and Lighting Act of 1972.

WHEREAS, Section 22567 of said Article 4 states the Report shall consist of the following:

- a. Maintenance plans for the improvements
- b. An estimate of the costs of the maintenance of the improvements
- c. A diagram for the assessment district
- d. An assessment of the estimated costs of the maintenance of the improvements

I do hereby assess and apportion the total amount of the costs and expenses upon several parcels of land within said designated area liable therefor and benefited thereby, in proportion to the estimated benefits that each parcel receives, respectively, from said services.

NOW, THEREFORE, I, the appointed ENGINEER, acting on behalf of the County of Riverside Transportation Department, pursuant to the Landscaping and Lighting Act of 1972, do hereby submit the following:

1. Pursuant to the provisions of law, the costs and expenses of the District have been assessed upon the parcels of land in the District benefited thereby in direct proportion and relation to the estimated benefits to be received by each of said parcels. For particulars as to the identification of said parcels, reference is made to the Assessment Diagrams, reduced copies of which are included herein.
2. As required by law, a Diagram is filed herewith, showing the District, as well as the boundaries and dimensions of the respective parcels and subdivisions of land within said District as the same exist each of which subdivisions of land or parcels or lots, respectively, have been given a separate number upon said Diagram and in the Assessment Roll contained herein.
3. The separate numbers given the subdivisions and parcels of land, as shown on said Assessment Diagram and Assessment Roll, correspond with the numbers assigned to each parcel by the Riverside County Assessor. Reference is made to the County Assessment Roll for a description of the lots or parcels.
4. There are no parcels or lots within Street Lighting Zones 2, 3, 4, 9, 11, 12, 13, 14, 16, 20, 21, 22, 25, 29, 30, 31, 36, 37, 38, 42, 43, 44, 45, 46, 47, 48, 52, 53, 54, 55, 56, 57, 58, 61, 64, 65, 66, 67, 68, 72, 74, 75, 76, 78, 81, 82, 85, 89, 95, 97, 99, 101, 103, 104, 107, 108, 109 or 110 that are owned by a federal, state or other local governmental agency that will benefit from the services to be provided by the assessments to be collected.

In conclusion, it is my opinion that the assessments for Landscaping and Lighting Maintenance District No. 89-1-Consolidated have been spread in direct accordance with the benefits that each parcel receives from the items being financed.

DATED this 15th day of May, 2018

P S O M A S



A handwritten signature in black ink, appearing to read "Michael D. Swan", written over a horizontal line.

MICHAEL D. SWAN
PROFESSIONAL CIVIL ENGINEER 25737
ENGINEER OF WORK
COUNTY OF RIVERSIDE
STATE OF CALIFORNIA

TABLE OF CONTENTS

Contents

Part I – Plans and Specifications _____ 1

An Executive Summary of the procedures for the preparation of the Engineer's Report, a breakdown of the number of zones and locations within L&LMD No. 89-1-C, a history of each zone and location as well as description of improvements and maintenance information within L&LMD No. 89-1-C.

Executive Summary

A.	Introduction	1
B.	Breakdown	2
C.	Changes to District Zones	3
D.	Description of Improvements and Services	4
E.	Maintenance Plans	12

Part II – Method of Apportionment _____ 14

A narrative of the property benefits from the improvements and the method of calculating each property's proportional special benefit and annual assessment.

Part III – Estimate of Costs and Expenses _____ 17

An estimate of the costs and expenses of maintaining the landscaping, multi-purpose trails, fencing, graffiti abatement, stormwater runoff catch basin filters, bio-swales, streetlights, traffic signals, and bridge lights, including incidental costs and expenses in connection therewith for Fiscal Year 2018–19, is as set forth on the lists thereof, attached hereto.

Part IV – Assessment Diagrams _____ 18

A diagram showing the District, the lines and dimensions of each parcel of land within said District, as the same exists on the maps of the Assessor of Riverside County for Fiscal Year 2018–19, is filed in the Office of the Riverside County Transportation Department. A reduced copy thereof is filed herewith and made a part hereof. Any changes in organization for said District (i.e. annexation) is discussed in Part I.

Part V – Assessment Rolls _____ 19

A detailed listing of each parcel to be assessed for Fiscal Year 2018–19, along with the individual amounts to be assessed.

Appendix A – Zone Budgets _____ A - 1

Appendix B - Assessment Diagrams _____ B - 1

PART I – PLANS AND SPECIFICATIONS

Part I – Plans and Specifications

EXECUTIVE SUMMARY

A. INTRODUCTION

This Combined Annual Engineer's Report is prepared in compliance with the requirements of Article 4, Chapter 1, of the Landscaping and Lighting Act of 1972 ("1972 Act"), which is Part 2, Division 15 of the California Streets and Highways Code.

Since the Passage of Proposition 218, Right to Vote on Taxes Act, which added Articles XIII(C) and XIII(D) to the California Constitution, new procedures must be followed to levy annual assessments under the 1972 Act.

Proposition 218 requires that all annual assessments be supported by a detailed Engineer's Report ("Report") prepared by a registered professional engineer. The Report includes the information required by law.

The 1972 Act provides for the annual levy of assessments for the Landscaping and Lighting Maintenance District No. 89-1-Consolidated ("District") for the express purpose of installing, maintaining, and servicing landscaping, trails, stormwater runoff catch basin filters, bio-swales, streetlights, traffic signals, bridge lights, and graffiti abatement improvements. The costs associated with the installation, maintenance, and servicing of the improvements may be assessed against those properties which are specially benefited by the installation, maintenance, and servicing. A County may levy annual assessments for an assessment district after complying with the requirements of the 1972 Act, and the provisions in Proposition 218.

The County initiates proceedings for the annual levy of assessments by passing a resolution, which proposes the annual levy under the 1972 Act. This resolution also describes the improvements, describes the location of the District, and finally orders an engineer, who is a registered professional engineer, certified by the State of California, to prepare and file a detailed report.

The Report prepared by the engineer must include maintenance plans for the improvements. The Report must also include an estimate of the costs of the improvements, a diagram, i.e., map of the District showing the boundary of the District, and an assessment of the estimated costs of the improvements against the parcels or lots which benefit from the improvements. Once the Report is completed, it is presented to the County Board of Supervisors for its review and approval as presented, or it may be modified and approved.

After the Report is preliminarily approved, the County Board of Supervisors may adopt a Resolution of Intention, which declares its intent to levy the annual assessments against parcels within the existing District, describes the improvements, and refers to the Report for details of the District. The Resolution of Intention also sets a time and place for a hearing on the annual levy of assessments for the District.

In accordance with Proposition 218, property owners of the assessed parcels must approve any new or increased assessments. Zones included in this Report have been previously approved by property owners in accordance with Proposition 218.

PART I – PLANS AND SPECIFICATIONS

B. BREAKDOWN

Currently there are 151 locations within 129 L&LMD No. 89-1-C Zones: 58 street lighting assessment zones (58 locations) and 71 assessment zones (93 locations).

There are 74 maintained locations; 4 dormant locations; and 15 locations within the County which have no improvements and are, therefore, not yet maintained; exclusive of street lighting zones.

The Combined Annual Engineer's Report will cover the 129 existing Zones. New or pending Zones will be presented to the Board of Supervisors under separate reports.

Total number of Locations: 151

Assessment Zones: 71 (93 locations)

Street Lighting Assessment Zones: 58 (58 locations)

Total number of Maintained Locations: 74, within 71 Assessment Zones

Total number of Maintained Street Lighting Zones: 47

The designation of the existing District and Zones is as follows:

Volumes:

Volume 1: Zones 1, 3, 8, 10, 11, 15, 19, 24, 26, 28, 29, 31, 36, 39, 43, 44, 45, 53, 55, 57, 58, 66, 68, 72, 74, 83, 84, 86, 87, 89, 91, 92, 94, and 97.

Volume 2: Zones 100, 103, 109, 110, 112, 119, 123, 124, 135, 138, 145, 146, 148, 149, 152, 153, 154, 155, 157, 160, 161, 162, 164, 166, 168, 171, 172, 174, 175, 180, 187, 188, 190, 191, 192, 193, and 195.

Volume 3: Street Lighting Zones 2, 3, 4, 9, 11, 12, 13, 14, 16, 20, 21, 22, 25, 29, 30, 31, 36, 37, 38, 42, 43, 44, 45, 46, 47, 48, 52, 53, 54, 55, 56, 57, 58, 61, 64, 65, 66, 67, 68, 72, 74, 75, 76, 78, 81, 82, 85, 89, 95, 97, 99, 101, 103, 104, 107, 108, 109, and 110.

PART I – PLANS AND SPECIFICATIONS

Assessment Units:

Acreage based: Zones 1, 10, 83, 87, 89, 94, 123, 124, 138, 145, 146, 148, 149, 152, 153, 154, 155, 157, 160, 161, 164, 166, 171, 174, 191, 192, 193 and Street Lighting Zones 9, 11, 12, 13, 16, 22, 25, 29, 30, 31, 36, 37, 38, 42, 44, 45, 46, 47, 48, 52, 53, 54, 55, 56, 57, 58, 61, 64, 65, 66, 67, 68, 72, 74, 75, 76, 78, 81, 82, 85, 89, 95, 97, 99, 101, 103, and 104.

Parcel based: Zones 3, 11, 15, 19, 24, 26, 28, 29, 31, 36, 39, 43, 44, 45, 53, 55, 57, 58, 66, 68, 72, 74, 84, 86, 91, 92, 97, 100, 103, 109, 110, 112, 119, 162, 168, 172, 175, 180, 187, 188, 190, 195 and Street Lighting Zones 2, 3, 4, 14, 20, 21, 43, 107, 108, 109 and 110.

EDU based: Zones 8 and 135.

Maintained Zones/Locations: Zone 1, Zone 3 Locations 2, 9, 44 and 48, Zone 8, Zone 10, Zone 11 Locations 1 and 2, Zone 15 Locations 1 through 4, Zone 19, Zone 24 Locations 1 through 3, Zone 26 Locations 1 through 5, Zone 28, Zone 29 Location 1, Zone 31 Locations 1 and 2, Zone 36 Locations 1 and 2, Zone 39, Zone 43, Zone 44 Locations 2D, 2G, and 3D, Zone 45, Zone 53, Zone 55, Zone 57, Zone 58, Zone 68, Zone 72, Zone 74, Zone 83, Zone 89, Zone 91, Zone 94, Zone 97, Zone 100, Zone 109, Zone 112, Zone 119, Zone 123, Zone 124, Zone 135, Zone 138, Zone 145, Zone 146, Zone 149, Zone 154, Zone 155, Zone 157, Zone 162, Zone 164, Zone 166, Zone 168, Zone 172, Zone 174, Zone 175, Zone 180, Zone 187, Zone 188, Zone 190, Zone 191, Zone 192, Zone 195 and Street Lighting Zones 3, 4, 9, 13, 14, 16, 20, 21, 22, 25, 29, 30, 31, 36, 37, 38, 42, 43, 44, 45, 47, 48, 52, 53, 54, 55, 56, 57, 61, 64, 65, 66, 67, 74, 75, 76, 78, 81, 82, 85, 89, 95, 97, 101, 103, 108, and 109.

Not Yet Maintained Zones/Locations (improvements have not yet been installed and/or accepted for maintenance): Zone 26 Location 6, Zone 31 Location 3, Zone 44 Locations 2B, 2C, and 3A, Zone 66, Zone 84, Zone 86, Zone 87, Zone 92, Zone 103, Zone 110, Zone 148, Zone 152, Zone 153, Zone 160, Zone 161, Zone 171, Zone 193 and Street Lighting Zones 11, 12, 46, 58, 68, 72, 99, 104, 107, and 110.

Zones with Dormant Improvements: 66, 152, 160, and 171, and Street Lighting Zone 2.

Zero Assessment: Zone 26 Location 6, Zone 31 Location 3, Zone 44 Locations 2B, 2C, and 3A, Zone 66, Zone 84, Zone 86, Zone 87, Zone 92, Zone 103, Zone 110, Zone 148, Zone 152, Zone 153, Zone 160, Zone 161, Zone 171, Zone 193 and Street Lighting Zones 2, 11, 12, 46, 58, 68, 72, 99, 104, 107 and 110.

C. CHANGES TO DISTRICT ZONES

For Fiscal Year 2018–19, three locations are changing status from Not Yet Maintained to Maintained and one from Maintained to Not Yet Maintained. The following zones/locations, which were not previously assessed, will be assessed beginning in 2018–19: Zone 44 Location 3D, Zone 68 and Zone 191. Zone 31 Location 3 was corrected to the Not Yet Maintained list. No streetlighting zones have changed status this year.

PART I – PLANS AND SPECIFICATIONS

D. DESCRIPTION OF IMPROVEMENTS AND SERVICES

The improvements for the District and Zones may be generally described as follows:

The installation, maintenance and servicing of ornamental structures, fences, multi-purpose trails, landscaping, including trees, shrubs, grass, and other ornamental vegetation, and appurtenant facilities, including irrigation systems, street lighting, traffic signals, bridge lights, and drainage devices (bio swales and stormwater runoff catch basin filters), located in public places within the boundaries of the Zones. Maintenance means the furnishing of services and materials for the ordinary and usual maintenance, operation, and servicing of any improvement, including: repair, removal, or replacement of all or part of any improvement; providing for the life, growth, health, and beauty of landscaping, including cultivation, irrigation, trimming, spraying, fertilizing, or treating for disease or injury; the removal of trimmings, rubbish, debris, and other solid waste; the cleaning, sandblasting, and painting of walls and other improvements to remove or cover graffiti. Servicing means the furnishing of electricity for the lighting and operation of any ornamental structures, landscaping, and appurtenant facilities; water for the irrigation and control of the landscaping, and the maintenance of any of the ornamental structures, landscaping and appurtenant facilities.

Article XIII(D) of the California Constitution defines "maintenance and operation expenses" as "the cost of rent, repair, replacement, rehabilitation, fuel, power, electrical current, care and supervision necessary to properly operate and maintain a permanent public improvement". The District's funding includes, but is not limited to, the removal, repair, replacement and appurtenances, electrical energy, supplies, engineering and incidental costs relating to the maintenance and operation of the improvements benefiting the District's parcels.

Description of Improvements by Zone

Maintenance of improvements to be funded by **Street Lighting Zone 2** generally includes streetlight improvements within public right-of-ways of:

Contreras Rd

Maintenance of improvements to be funded by **Street Lighting Zone 3** generally includes streetlight improvements within public right-of-ways of:

Harvill Ave

Maintenance of improvements to be funded by **Street Lighting Zone 4** generally includes streetlight improvements within public right-of-ways of:

Berkey Dr

Wildcat Dr

PART I – PLANS AND SPECIFICATIONS

Maintenance of improvements to be funded by **Street Lighting Zone 9** generally includes streetlight improvements within public right-of-ways of:

SH 79

Sky Canyon Dr

Maintenance of improvements to be funded by **Street Lighting Zone 11** generally includes streetlight improvements within public right-of-ways of:

SH 74

Maintenance of improvements to be funded by **Street Lighting Zone 12** generally includes streetlight improvements within public right-of-ways of:

SH 79

Maintenance of improvements to be funded by **Street Lighting Zone 13** generally includes streetlight improvements within public right-of-ways of:

42nd Ave

Adams St

Hermitage Dr

Maintenance of improvements to be funded by **Street Lighting Zone 14** generally includes streetlight improvements within public right-of-ways of:

Cherry Valley Blvd

Maintenance of improvements to be funded by **Street Lighting Zone 16** generally includes streetlight improvements within public right-of-ways of:

Stellar Ct

Temescal Canyon Rd

Maintenance of improvements to be funded by **Street Lighting Zone 20** generally includes streetlight improvements within public right-of-ways of:

Baldi Ct

Noble St

Maintenance of improvements to be funded by **Street Lighting Zone 21** generally includes streetlight improvements within public right-of-ways of:

Temescal Canyon Rd

Maintenance of improvements to be funded by **Street Lighting Zone 22** generally includes streetlight improvements within public right-of-ways of:

Cajalco Rd

PART I – PLANS AND SPECIFICATIONS

Maintenance of improvements to be funded by **Street Lighting Zone 25** generally includes streetlight improvements within public right-of-ways of:

Magnolia Ave

Maintenance of improvements to be funded by **Street Lighting Zone 29** generally includes streetlight improvements within public right-of-ways of:

Del Norte Wy

Gunther St

Hill St

Woburn Ct

Maintenance of improvements to be funded by **Street Lighting Zone 30** generally includes streetlight improvements within public right-of-ways of:

Van Buren St

Maintenance of improvements to be funded by **Street Lighting Zone 31** generally includes streetlight improvements within public right-of-ways of:

Country Club Dr

Maintenance of improvements to be funded by **Street Lighting Zone 36** generally includes streetlight improvements within public right-of-ways of:

Varner Rd

Maintenance of improvements to be funded by **Street Lighting Zone 37** generally includes streetlight improvements within public right-of-ways of:

Benton Rd

Van Gaale Ln

Maintenance of improvements to be funded by **Street Lighting Zone 38** generally includes streetlight improvements within public right-of-ways of:

Haskell Rd

Maintenance of improvements to be funded by **Street Lighting Zone 42** generally includes streetlight improvements within public right-of-ways of:

Temescal Canyon Rd

Maintenance of improvements to be funded by **Street Lighting Zone 43** generally includes streetlight improvements within public right-of-ways of:

County Line Rd

PART I – PLANS AND SPECIFICATIONS

Maintenance of improvements to be funded by **Street Lighting Zone 44** generally includes streetlight improvements within public right-of-ways of:

Calle Arnaz

Maintenance of improvements to be funded by **Street Lighting Zone 45** generally includes streetlight improvements within public right-of-ways of:

SH 74

Maintenance of improvements to be funded by **Street Lighting Zone 46** generally includes streetlight improvements within public right-of-ways of:

El Tecolote Rd

Maintenance of improvements to be funded by **Street Lighting Zone 47** generally includes streetlight improvements within public right-of-ways of:

Pulsar Ct

Temescal Canyon Rd

Maintenance of improvements to be funded by **Street Lighting Zone 48** generally includes streetlight improvements within public right-of-ways of:

Emperor Rd

SH-74

Maintenance of improvements to be funded by **Street Lighting Zone 52** generally includes streetlight improvements within public right-of-ways of:

Rio Del Sol Rd

Watt Ct

Maintenance of improvements to be funded by **Street Lighting Zone 53** generally includes streetlight improvements within public right-of-ways of:

Temescal Canyon Rd

Maintenance of improvements to be funded by **Street Lighting Zone 54** generally includes streetlight improvements within public right-of-ways of:

Varner Rd

Maintenance of improvements to be funded by **Street Lighting Zone 55** generally includes streetlight improvements within public right-of-ways of:

Benton Rd

Winchester Rd

PART I – PLANS AND SPECIFICATIONS

Maintenance of improvements to be funded by **Street Lighting Zone 56** generally includes streetlight improvements within public right-of-ways of:

Van Buren St

Maintenance of improvements to be funded by **Street Lighting Zone 57** generally includes streetlight improvements within public right-of-ways of:

Benton Rd

Winchester Rd

Maintenance of improvements to be funded by **Street Lighting Zone 58** generally includes streetlight improvements within public right-of-ways of:

Varner Rd

Maintenance of improvements to be funded by **Street Lighting Zone 61** generally includes streetlight improvements within public right-of-ways of:

Varner Rd

Maintenance of improvements to be funded by **Street Lighting Zone 64** generally includes streetlight improvements within public right-of-ways of:

Datil Rd

Ramon Rd

San Miguelito Dr

Maintenance of improvements to be funded by **Street Lighting Zone 65** generally includes streetlight improvements within public right-of-ways of:

Cajalco Expy

Harvill Ave

Maintenance of improvements to be funded by **Street Lighting Zone 66** generally includes streetlight improvements within public right-of-ways of:

Magnolia Ave

Maintenance of improvements to be funded by **Street Lighting Zone 67** generally includes streetlight improvements within public right-of-ways of:

Country Club Dr

Yucca Ln

Maintenance of improvements to be funded by **Street Lighting Zone 68** generally includes streetlight improvements within public right-of-ways of:

Varner Rd

PART I – PLANS AND SPECIFICATIONS

Maintenance of improvements to be funded by **Street Lighting Zone 72** generally includes streetlight improvements within public right-of-ways of:

SH 74

Maintenance of improvements to be funded by **Street Lighting Zone 74** generally includes streetlight improvements within public right-of-ways of:

East Lynn St

Maintenance of improvements to be funded by **Street Lighting Zone 75** generally includes streetlight improvements within public right-of-ways of:

Temescal Canyon Rd

Maintenance of improvements to be funded by **Street Lighting Zone 76** generally includes streetlight improvements within public right-of-ways of:

Magnolia Ave

Maintenance of improvements to be funded by **Street Lighting Zone 78** generally includes streetlight improvements within public right-of-ways of:

SH-74

Soboba St

Maintenance of improvements to be funded by **Street Lighting Zone 81** generally includes streetlight improvements within public right-of-ways of:

7th St

65th Ave

Maintenance of improvements to be funded by **Street Lighting Zone 82** generally includes streetlight improvements within public right-of-ways of:

Meridian St

SH-74

Maintenance of improvements to be funded by **Street Lighting Zone 85** generally includes streetlight improvements within public right-of-ways of:

SH-79

Winchester Rd

Maintenance of improvements to be funded by **Street Lighting Zone 89** generally includes streetlight improvements within public right-of-ways of:

Rancho California Rd

PART I – PLANS AND SPECIFICATIONS

Maintenance of improvements to be funded by **Street Lighting Zone 95** generally includes streetlight improvements within public right-of-ways of:

Corson Ave

Maintenance of improvements to be funded by **Street Lighting Zone 97** generally includes streetlight improvements within public right-of-ways of:

Cajalco Rd

Maintenance of improvements to be funded by **Street Lighting Zone 99** generally includes streetlight improvements within public right-of-ways of:

Esplanade Ave

Maintenance of improvements to be funded by **Street Lighting Zone 101** generally includes streetlight improvements within public right-of-ways of:

Corkill Rd

Dillon Rd

Maintenance of improvements to be funded by **Street Lighting Zone 103** generally includes streetlight improvements within public right-of-ways of:

Lutheran Church Rd

Pierson Blvd

Maintenance of improvements to be funded by **Street Lighting Zone 104** generally includes streetlight improvements within public right-of-ways of:

Ehlers Blvd

Maintenance of improvements to be funded by **Street Lighting Zone 107** generally includes streetlight improvements within public right-of-ways of:

Rio Del Sol Rd

30th Ave

Maintenance of improvements to be funded by **Street Lighting Zone 108** generally includes streetlight improvements within public right-of-ways of:

Florence St

Maintenance of improvements to be funded by **Street Lighting Zone 109** generally includes streetlight improvements within public right-of-ways of:

Oxbow Dr

PART I – PLANS AND SPECIFICATIONS

Maintenance of improvements to be funded by **Street Lighting Zone 110** generally includes streetlight improvements within public right-of-ways of:

Rancho California Rd

La Serena Way

PART I – PLANS AND SPECIFICATIONS

E. MAINTENANCE PLANS

Plans for the improvements for the Zones are voluminous and are not bound in this Report but by this reference are incorporated and made a part of this Report. The Plans for maintained zones are on file in the office of the Riverside County Transportation Department, 4080 Lemon Street, 2nd Floor, Riverside, CA 92501, where they are available for public inspection. Reduced maps of the maintained improvements are in Part IV, Assessment Diagrams of this Report.

ZONE	PLAN NUMBER
Street Lighting Zone 3	927-JJ
Street Lighting Zone 4	931-KK
Street Lighting Zone 9	926-BB
Street Lighting Zone 13	932-TT
Street Lighting Zone 14	930-BB
Street Lighting Zone 16	920-M/926-CC/935-T
Street Lighting Zone 20	815-T
Street Lighting Zone 21	935-JJ
Street Lighting Zone 22	932-JJ
Street Lighting Zone 25	956-O
Street Lighting Zone 29	933-T
Street Lighting Zone 30	933-C
Street Lighting Zone 31	935-J
Street Lighting Zone 36	954-EE
Street Lighting Zone 37	934-ZZ
Street Lighting Zone 38	935-F
Street Lighting Zone 42	941-E
Street Lighting Zone 43	915-MM
Street Lighting Zone 44	939-QQ
Street Lighting Zone 45	936-ZZ
Street Lighting Zone 47	920-M/926-CC/935-T
Street Lighting Zone 48	939-WW
Street Lighting Zone 52	939-S
Street Lighting Zone 53	945-BB

PART I – PLANS AND SPECIFICATIONS

ZONE	PLAN NUMBER
Street Lighting Zone 54	941-HH
Street Lighting Zone 55	941-P
Street Lighting Zone 56	933-C
Street Lighting Zone 57	941-KK
Street Lighting Zone 61	943-M
Street Lighting Zone 64	948-Z
Street Lighting Zone 65	943-G
Street Lighting Zone 66	943-XX
Street Lighting Zone 67	945-H
Street Lighting Zone 74	941-XX
Street Lighting Zone 75	948-QQ
Street Lighting Zone 76	940-00
Street Lighting Zone 78	949-A
Street Lighting Zone 81	948-Y
Street Lighting Zone 82	948-YY
Street Lighting Zone 85	947-GG
Street Lighting Zone 89	951-S
Street Lighting Zone 95	950-BB
Street Lighting Zone 97	NOT AVAILABLE
Street Lighting Zone 101	954-BB
Street Lighting Zone 103	957-H
Street Lighting Zone 107	956-HH
Street Lighting Zone 108	957-NN
Street Lighting Zone 109	958-BB
Street Lighting Zone 110	962-D

PART II – METHOD OF APPORTIONMENT

Part II – Method of Apportionment

The 1972 Act permits the establishment of assessment districts by agencies for the purpose of providing certain public improvements, which include the construction, maintenance, and servicing of public lights, landscaping, dedicated easements for landscape use, and appurtenant facilities. The 1972 Act further provides that assessments may be apportioned upon all assessable lots or parcels of land within an assessment district in proportion to the estimated benefits to be received by each lot or parcel from the improvements rather than assessed value.

“The net amount to be assessed upon lands within an assessment district may be apportioned by any formula or method which fairly distributes the net amount among all assessable lots or parcels in proportion to the estimated benefits to be received by each such lot or parcel from the improvements.”

The formula used for calculating assessments reflects the composition of the parcels and the improvements and services provided by the District to fairly apportion the costs based on the estimated benefit to each parcel.

In addition, Article XIII(D) of the California Constitution (“Article”) requires that a parcel’s assessment may not exceed the reasonable cost of the proportional special benefit conferred on that parcel. The Article provides that only special benefits are assessable, and the County must separate the general benefits from the special benefits conferred on a parcel. A special benefit is a particular and distinct benefit over and above general benefits conferred on the public at large, including real property within the district. The general enhancement of property value does not constitute a special benefit.

SPECIAL BENEFIT

The servicing of streetlights provides direct and special benefit to those properties located within Landscaping and Lighting Maintenance District No. 89-1-Consolidated (“L&LMD No. 89-1-C” or “District”).

Each and every lot or parcel within the District, receives a particular and distinct benefit from the improvements over and above general benefits conferred by the improvements. First, improvements were conditions of approval for the creation o development of the parcels. In order to create or develop the parcels, the County required the original developer to install and/or guarantee the maintenance of the improvements, and appurtenant facilities serving the lots or parcels. Therefore, each and every lot or parcel within the District could not have been developed in the absence of the installation and expected maintenance and servicing of these facilities.

In addition, the improvements continue to confer a particular and distinct special benefit upon parcels within the District because of the nature of the improvements. The servicing of streetlights, and appurtenant facilities, specially benefit parcels within the District by increased public safety, improved neighborhood property protection, reduced property-related crimes (especially vandalism), increasing public safety for both pedestrians and the motoring public, and increasing traffic safety by improving visibility. Streetlights

PART II – METHOD OF APPORTIONMENT

also assign rights-of-way for the safety of pedestrians and motorists by defining a specific path during all hours of the day.

Streets are constructed for the safe and convenient travel of vehicles and pedestrians. They also provide an area for underground and overhead utilities. These elements are a distinct and special benefit to all developed parcels in the District. Streetlights are installed on and are for street purposes and are maintained and serviced to allow the street to perform to the standards it was designed.

Streetlights are determined to be an integral part of “streets” as a “permanent public improvement.” One of the principal purposes of fixed roadway lighting is to create a nighttime environment conducive to quick, accurate, and comfortable seeing for the user of the facility. These factors, if attained, combine to improve traffic safety and achieve efficient traffic movement. Fixed lighting can enable the motorist to see detail more distinctly and to react safely toward roadway and traffic conditions present on or near the roadway facility.

The system of streets within the District is established to provide access to each parcel in the District. Streetlights provide a safer street environment for owners of the parcels served. If the parcels were not subdivided to provide individual parcels to owners within the District, there would be no need for a system of streets with streetlights. Therefore, the installation of streetlights is for the express, special benefit of the parcels within the District.

Finally, the servicing of streetlights provides an enhanced quality of life and sense of well-being for properties within the District.

Because all benefiting properties within a given zone consist of a uniform land use, it is determined that all lots or parcels benefit equally from the improvements and the costs and expenses for the provision of electricity for the streetlights are apportioned on a per acre or per parcel basis.

Based on the benefits described above, streetlights are an integral part of the quality of life of the District. This quality of life is a special benefit to those parcels that are not government-owned parcels or easements, utility easements, or flood channel parcels. Government-owned parcels or easements, utility easements and flood channel parcels do not benefit from the improvements due to their use and lack of habitation on such parcels. Parcels of this nature are usually vacant narrow strips of land or flood control channels and therefore do not generate or experience pedestrian or vehicular traffic. Nor do these types of parcels support dwelling units or other structures that would promote frequent use of the parcels by the traveling public. As a result of this lack of activity on such parcels they do not receive any benefit from streetlights and are not assessed.

Special Benefit of Landscaping and Lighting Maintenance District No. 89-1-Consolidated Authorized Improvements and Services:

- The installation and planting of landscaping, including trees, shrubs, grass and other ornamental vegetation;
- The installation or construction of statuary, fountains and other ornamental structures and facilities;
- The installation or construction of public lighting facilities, including, but not limited to, traffic signals;

PART II – METHOD OF APPORTIONMENT

- The installation or construction of any facilities which are appurtenant to any of the foregoing, or which are necessary or convenient for the maintenance or servicing thereof, including, but not limited to, grading, clearing, removal of debris, the installation or construction of curbs, gutters, walls, sidewalks or paving, water irrigation, drainage or electrical facilities, and;
- The maintenance or servicing, or both, of any of the foregoing.

GENERAL BENEFIT

The total benefit from the works of improvement is a combination of the special benefits to the parcels within the District and the general benefits to the public at large and to adjacent property owners. The portion of the total streetlight servicing costs associated with general benefits will not be assessed to the parcels in the District, but will be paid from other County Funds. Because the streetlights are located immediately adjacent to properties within the District and are maintained solely for the benefit of the properties within the District, any benefit received by properties outside of the District will be in the proportions stated under Special Benefit. As a result, no property is assessed in excess of the reasonable cost of the proportional special benefit conferred on that property

PART III – ESTIMATE OF COSTS AND EXPENSES

Part III – Estimate of Costs and Expenses

The cost estimate contains each of the items specified in Section 22569 of the 1972 Act.

The 1972 Act provides that the estimated costs of the improvements shall include the total cost of the improvements for the entire Fiscal Year (2018-19), including incidental expenses, which may include operating reserves.

The 1972 Act also provides that the amount of any surplus, deficit, or contribution be included in the estimated cost of improvements. The net amount to be assessed on the lots or parcels within the Zones is the total cost of installation, maintenance, and servicing with adjustments either positive or negative for reserves, surpluses, deficits, and/or contributions.

The inflation factor, for those zones with an inflation factor in place, may increase budgets for Zones, which have not been accepted for maintenance, as if assessed. However, the amount to levy may be credited resulting in a zero assessment.

Each succeeding fiscal year the maximum assessment for Street Lighting Zones 2, 3, 4, 9, 11, 12, 13, 14, 16, 20, 21, 22, 25, 29, 30, 31, 36, 37, 38, 42, 43, 44, 45, 46, 47, 48, 52, 53, 54, 55, 56, 57, 58, 61, 64, 65, 66, 67, 68, 72, 74, 75, 76, 78, 81, 82, 85, 89, 95, 97, 99, 101, 103, 104, 107, 108, 109, and 110 may be subject to an annual adjustment that is the greater of two percent or the cumulative percentage increase, if any, in the Consumer Price Index for all Urban Consumers (CPI-U) for All Items or the CPI-U for Electricity (as applicable) for the Los Angeles-Riverside-Orange County California Standard Metropolitan Statistical area ("Index") published by the Bureau of Labor Statistics of the United States Department of Labor. The annual CPI-U for All Items or CPI-U for Electricity adjustment will be based on the cumulative increase, if any, in the Index as it stands in March of each year over the base Index. Any increase larger than the greater of two percent, the CPI-U for All Items, or CPI-U for Electricity annual adjustment requires a majority approval of all the property owners within each of the benefit zones in the District.

There is a two percent proposed inflationary increase in the maximum assessment per acre, or per parcel as applicable in for Street Lighting Zones 2, 3, 4, 9, 11, 12, 13, 14, 16, 20, 21, 22, 25, 29, 30, 31, 36, 37, 38, 42, 43, 44, 45, 46, 47, 48, 52, 53, 54, 55, 56, 57, 58, 61, 64, 65, 66, 67, 68, 72, 74, 75, 76, 78, 81, 82, 85, 89, 95, 97, 99, 101, 103, 104, 107, 108, 109, and 110 over the maximum assessment for Fiscal Year 2017-18, which is consistent with ballot propositions approved by the qualified electors when establishing said zones.

Please see Appendix A for the individual budget pages for each Street Lighting Zone covered in Volume 3 of the Report.

PART IV – ASSESSMENT DIAGRAMS

Part IV – Assessment Diagrams

Reduced copies of the Assessment Diagrams are filed herewith and made a part hereof.

If any parcel submitted for collection is identified by the County Auditor-Controller to be an invalid parcel number for the current fiscal year, a corrected parcel number and/or new parcel number will be identified and resubmitted to the County Auditor/Controller. The assessment amount to be levied and collected for the resubmitted parcel or parcels shall be based on the method of apportionment and assessment rate approved in this Report. Therefore, if any parcel has changed subsequent to the date of this Report, the assessment amount applied to each of the new parcels shall be recalculated and applied according to the approved method of apportionment and assessment rate.

Information identified on these maps was received from several sources including the owner/developer, Riverside County Transportation Department, and the Riverside County Assessor.

Please see Appendix B for the Diagrams of each Street Lighting Zone covered in Volume 3 of the Report.

PART V – ASSESSMENT ROLLS

Part V – Assessment Rolls

(begin on the following page)

Street Lighting Zones FY 2018-2019 Assessments

Zone	APN	Assessment
STL 2	576080018-3	\$186.21
STL 3	317240043-6	\$287.06
STL 3	317240044-7	\$287.06
STL 3	317240045-8	\$287.06
STL 4	748370023-0	\$56.75
STL 4	748370024-1	\$56.75
STL 4	748370025-2	\$56.75
STL 4	748370052-6	\$56.75
STL 4	748370053-7	\$56.75
STL 4	748370054-8	\$56.75
STL 4	748370056-0	\$56.75
STL 4	748370058-2	\$56.75
STL 4	748370060-3	\$56.75
STL 4	748370062-5	\$56.75
STL 9	920120039-2	\$53.97
STL 9	920120042-4	\$10.12
STL 9	920120050-1	\$44.97
STL 9	920120053-4	\$1.12
STL 9	920120054-5	\$134.92
STL 9	920120056-7	\$1.12
STL 9	920120057-8	\$604.87
STL 9	920120058-9	\$23.61
STL 9	920120059-0	\$93.32
STL 9	920120060-0	\$92.19
STL 9	920120061-1	\$101.19
STL 9	920120062-2	\$168.83
STL 9	920120070-9	\$2.25
STL 9	920120071-0	\$42.72
STL 9	920120083-1	\$87.70
STL 9	920120084-2	\$61.84
STL 11	457350028-6	\$314.93
STL 12	957330046-5	\$667.48
STL 12	957330047-6	\$134.02
STL 12	957330048-7	\$330.42
STL 12	957330049-8	\$299.90
STL 13	607331019-6	\$350.30
STL 13	607331022-8	\$1,682.28
STL 14	407230030-1	\$288.85

STL 16	283100055-6	\$296.33
STL 16	283100056-7	\$214.14
STL 16	283100057-8	\$96.04
STL 16	283110059-1	\$75.49
STL 16	283110060-1	\$39.15
STL 16	283110061-2	\$48.67
STL 16	283440002-9	\$53.43
STL 16	283440004-1	\$48.88
STL 16	283440007-4	\$51.91
STL 16	283440008-5	\$29.42
STL 16	283440009-6	\$29.63
STL 16	283440010-6	\$33.74
STL 16	283440011-7	\$25.74
STL 16	283440013-9	\$51.91
STL 16	283440014-0	\$32.88
STL 16	283440015-1	\$89.55
STL 16	283440016-2	\$43.69
STL 16	283440017-3	\$40.23
STL 16	283440018-4	\$63.16
STL 16	283440019-5	\$15.36
STL 16	283440020-5	\$13.84
STL 16	283440021-6	\$12.11
STL 16	283440022-7	\$11.90
STL 16	283440024-9	\$43.04
STL 16	283440025-0	\$43.04
STL 16	283440026-1	\$14.92
STL 16	283440027-2	\$11.90
STL 16	283440028-3	\$14.71
STL 16	283440029-4	\$11.68
STL 16	283440030-4	\$57.54
STL 16	283440032-6	\$52.13
STL 20	403060016-6	\$39.42
STL 20	403060017-7	\$39.42
STL 20	403060018-8	\$39.42
STL 20	403060019-9	\$39.42
STL 20	403060020-9	\$39.42
STL 20	403060021-0	\$39.42
STL 20	403060022-1	\$39.42
STL 20	403060023-2	\$39.42

Street Lighting Zones FY 2018-2019 Assessments

STL 20	403060024-3	\$39.42
STL 20	403060025-4	\$39.42
STL 20	403060026-5	\$39.42
STL 20	403060027-6	\$39.42
STL 20	403060028-7	\$39.42
STL 20	403060029-8	\$39.42
STL 20	403060030-8	\$39.42
STL 20	403060031-9	\$39.42
STL 20	403060032-0	\$39.42
STL 20	403060033-1	\$39.42
STL 20	403060034-2	\$39.42
STL 20	403060035-3	\$39.42
STL 21	283160035-4	\$60.79
STL 21	283160037-6	\$60.79
STL 21	283160038-7	\$60.79
STL 21	283160039-8	\$60.79
STL 21	283160040-8	\$60.79
STL 22	317140052-5	\$324.78
STL 22	317140054-7	\$603.03
STL 25	172110002-8	\$299.52
STL 29	650350011-3	\$105.42
STL 29	650350012-4	\$105.42
STL 29	650350013-5	\$134.18
STL 29	650350014-6	\$134.18
STL 29	650350017-9	\$97.76
STL 29	650350018-0	\$97.76
STL 29	650350019-1	\$92.01
STL 29	650350020-1	\$93.92
STL 29	650350021-2	\$92.01
STL 29	650350022-3	\$92.01
STL 29	650350023-4	\$93.92
STL 29	650350024-5	\$92.01
STL 29	650350025-6	\$111.17
STL 29	650350033-3	\$272.19
STL 30	759120055-6	\$44.71
STL 30	759120056-7	\$44.78
STL 30	759120057-8	\$36.31
STL 30	759120058-9	\$35.88
STL 30	759120059-0	\$36.31

STL 30	759120060-0	\$37.45
STL 30	759120061-1	\$33.89
STL 30	759120062-2	\$35.60
STL 30	759120063-3	\$35.60
STL 30	759120065-5	\$68.85
STL 31	607382006-2	\$152.02
STL 31	607382007-3	\$149.96
STL 36	693230016-0	\$346.62
STL 36	693230019-3	\$272.90
STL 37	963020009-9	\$808.71
STL 38	693032012-4	\$318.21
STL 42	283160030-9	\$578.19
STL 43	401310003-2	\$89.71
STL 43	401310004-3	\$89.71
STL 43	401310005-4	\$89.71
STL 43	401310006-5	\$89.71
STL 43	401310007-6	\$89.71
STL 44	965460005-9	\$1,210.52
STL 45	551400033-3	\$38.35
STL 45	551400034-4	\$19.33
STL 45	551400035-5	\$254.64
STL 46	457350031-8	\$371.21
STL 47	283100055-6	\$1,025.86
STL 47	283100056-7	\$741.31
STL 47	283100057-8	\$332.47
STL 47	283110059-1	\$261.33
STL 47	283110060-1	\$135.53
STL 47	283110061-2	\$168.48
STL 47	283440002-9	\$184.95
STL 47	283440004-1	\$169.23
STL 47	283440007-4	\$179.71
STL 47	283440008-5	\$101.84
STL 47	283440009-6	\$102.59
STL 47	283440010-6	\$116.81
STL 47	283440011-7	\$89.11
STL 47	283440013-9	\$179.71
STL 47	283440014-0	\$113.82
STL 47	283440015-1	\$310.00
STL 47	283440016-2	\$151.26

Street Lighting Zones FY 2018-2019 Assessments

STL 47	283440017-3	\$139.28
STL 47	283440018-4	\$218.65
STL 47	283440019-5	\$53.16
STL 47	283440020-5	\$47.92
STL 47	283440021-6	\$41.93
STL 47	283440022-7	\$41.18
STL 47	283440024-9	\$149.01
STL 47	283440025-0	\$149.01
STL 47	283440026-1	\$51.67
STL 47	283440027-2	\$41.18
STL 47	283440028-3	\$50.92
STL 47	283440029-4	\$40.44
STL 47	283440030-4	\$199.18
STL 47	283440032-6	\$180.46
STL 48	459020062-0	\$264.02
STL 48	459020063-1	\$254.61
STL 48	459020071-8	\$464.39
STL 48	459020072-9	\$0.55
STL 52	650380001-7	\$66.90
STL 52	650380002-8	\$63.12
STL 52	650380003-9	\$63.12
STL 52	650380004-0	\$63.12
STL 52	650380005-1	\$63.12
STL 52	650380006-2	\$63.12
STL 52	650380007-3	\$63.12
STL 52	650380008-4	\$98.46
STL 52	650380011-6	\$66.90
STL 52	650380012-7	\$66.90
STL 52	650380013-8	\$66.90
STL 52	650380014-9	\$66.90
STL 52	650380015-0	\$66.90
STL 52	650380016-1	\$70.69
STL 52	650380018-3	\$155.26
STL 53	393080005-4	\$149.70
STL 53	393080007-6	\$39.46
STL 53	393080009-8	\$107.80
STL 53	393110001-2	\$10.58
STL 53	393110002-3	\$101.70
STL 53	393110006-7	\$54.51

STL 53	942170011-1	\$149.70
STL 54	693010016-0	\$288.96
STL 54	693010017-1	\$295.42
STL 54	693010019-3	\$334.16
STL 55	963060070-7	\$230.55
STL 55	963060071-8	\$237.33
STL 55	963060072-9	\$235.07
STL 55	963060073-0	\$187.60
STL 56	759120055-6	\$24.18
STL 56	759120056-7	\$24.22
STL 56	759120057-8	\$19.64
STL 56	759120058-9	\$19.40
STL 56	759120059-0	\$19.64
STL 56	759120060-0	\$20.25
STL 56	759120061-1	\$18.33
STL 56	759120062-2	\$19.25
STL 56	759120063-3	\$19.25
STL 56	759120065-5	\$37.23
STL 57	963440001-9	\$36.08
STL 57	963440002-0	\$99.23
STL 57	963440003-1	\$442.01
STL 57	963440004-2	\$120.28
STL 57	963440005-3	\$138.32
STL 57	963440006-4	\$100.23
STL 57	963440007-5	\$101.23
STL 57	963440008-6	\$65.15
STL 57	963440009-7	\$72.17
STL 57	963440010-7	\$230.53
STL 57	963440011-8	\$97.22
STL 58	670240011-9	\$5.64
STL 58	670240012-0	\$39.24
STL 58	670240013-1	\$151.47
STL 58	670240014-2	\$216.70
STL 58	670240015-3	\$139.08
STL 58	670240016-4	\$63.62
STL 58	670250019-8	\$36.10
STL 58	670250020-8	\$4.70
STL 61	650080094-4	\$184.98
STL 61	650080095-5	\$50.14

Street Lighting Zones FY 2018-2019 Assessments

STL 61	650090043-9	\$177.53
STL 61	650090044-0	\$6.78
STL 64	650263026-8	\$1,236.96
STL 65	317110034-6	\$852.43
STL 65	317110035-7	\$973.08
STL 66	135151023-3	\$926.35
STL 67	607020048-1	\$2,327.14
STL 68	695100001-8	\$523.13
STL 68	695100002-9	\$145.30
STL 68	695100003-0	\$34.18
STL 68	695100004-1	\$31.72
STL 68	695100005-2	\$23.99
STL 68	695100006-3	\$16.04
STL 68	695100007-4	\$48.13
STL 68	695100008-5	\$20.39
STL 68	695100009-6	\$33.03
STL 68	695100010-6	\$113.64
STL 68	695100011-7	\$89.81
STL 68	695100014-0	\$31.11
STL 68	695100015-1	\$72.32
STL 72	551210008-4	\$465.47
STL 74	650138001-8	\$93.09
STL 74	650138004-1	\$465.46
STL 75	393070016-3	\$465.40
STL 76	172111001-0	\$36.15
STL 76	172111002-1	\$54.23
STL 76	172111003-2	\$63.27
STL 76	172111004-3	\$284.70
STL 78	551220069-0	\$1,802.66
STL 81	727120016-8	\$1,284.43
STL 82	551210038-1	\$878.74
STL 85	957330038-8	\$912.61
STL 89	942170013-3	\$538.37
STL 95	295291029-1	\$447.34
STL 97	317110008-3	\$141.79
STL 97	317110009-4	\$146.59
STL 97	317110010-4	\$141.79
STL 99	432170023-4	\$860.05
STL 101	654190037-1	\$774.93

STL 103	663020016-2	\$1,695.26
STL 104	836031009-4	\$843.22
STL 107	650020031-1	\$1,142.17
STL 108	318061037-5	\$213.30
STL 109	273520040-7	\$418.25
STL 110	463040024-9	\$891.41

APPENDIX A – ZONE BUDGETS

Appendix A – Zone Budgets

(begin on the following page)

**LANDSCAPING AND LIGHTING MAINTENANCE DISTRICT NO. 89-1 CONSOLIDATED
FISCAL YEAR 2018-19
ANNUAL BUDGET
STREET LIGHTING ZONE 2**

	Projected Annual Cost	No. of parcel(s)	Cost Per parcel
Maintenance Improvement			
Streetlights	\$306.00	1	\$306.00
Total Maintenance Improvement Costs	\$306.00	Cost Per parcel	\$306.00
	Projected Annual Cost	No. of parcel(s)	Cost Per parcel
Incidental			
Administrative Costs	\$51.00	1	\$51.00
Contingency		1	
Maintained Positive Fund Balance		1	
Total Incidental Costs	\$51.00	Cost Per parcel	\$51.00
Total Projected Costs	\$357.00	Cost Per parcel	\$357.00

Maximum Annual Assessment FY 18-19 \$186.21
Maximum Per parcel Annual Assessment FY 18-19 \$186.21

Projected Annual Assessment FY 18-19 \$186.21
Projected Per parcel Annual Assessment FY 18-19 \$186.21

Per Anza Electric Cooperative Inc.'s Streetlight Agreement, the energy costs of the streetlights on Contreras Rd are the responsibility of the property owner. Should the property owner default on this agreement, the energy costs will transfer to L&LMD No. 89-1-C, and the dormant annual assessment for such services will become active.

**LANDSCAPING AND LIGHTING MAINTENANCE DISTRICT NO. 89-1 CONSOLIDATED
FISCAL YEAR 2018-19
ANNUAL BUDGET
STREET LIGHTING ZONE 3**

Maintenance Improvement	Projected Annual Cost	No. of parcel(s)	Cost Per parcel
Streetlights	\$642.60	3	\$214.20
Total Maintenance Improvement Costs	\$642.60	Cost Per parcel	\$214.20

Incidental	Projected Annual Cost	No. of parcel(s)	Cost Per parcel
Administrative Costs	\$102.00	3	\$34.00
Contingency	\$0.00	3	\$0.00
Maintained Positive Fund Balance	\$306.00	3	\$102.00
Total Incidental Costs	\$408.00	Cost Per parcel	\$136.00

Total Projected Costs \$1,050.60 Cost Per parcel \$350.20

Maximum Annual Assessment FY 18-19 \$861.18
Maximum Per parcel Annual Assessment FY 18-19 \$287.06

Projected Annual Assessment FY 18-19 \$861.18
Projected Per parcel Annual Assessment FY 18-19 \$287.06

**LANDSCAPING AND LIGHTING MAINTENANCE DISTRICT NO. 89-1 CONSOLIDATED
FISCAL YEAR 2018-19
ANNUAL BUDGET
STREET LIGHTING ZONE 4**

	Projected Annual Cost	No. of parcel(s)	Cost Per parcel
Maintenance Improvement			
Streetlights	\$459.00	10	\$45.90
Total Maintenance Improvement Costs	\$459.00	Cost Per parcel	\$45.90
	Projected Annual Cost	No. of parcel(s)	Cost Per parcel
Incidental			
Administrative Costs	\$102.00	10	\$10.20
Contingency	\$0.00	10	\$0.00
Maintained Positive Fund Balance	\$255.00	10	\$25.50
Total Incidental Costs	\$357.00	Cost Per parcel	\$35.70
Total Projected Costs	\$816.00	Cost Per parcel	\$81.60

Maximum Annual Assessment FY 18-19 \$567.53
Maximum Per parcel Annual Assessment FY 18-19 \$56.75

Projected Annual Assessment FY 18-19 \$567.53
Projected Per parcel Annual Assessment FY 18-19 \$56.75

**LANDSCAPING AND LIGHTING MAINTENANCE DISTRICT NO. 89-1 CONSOLIDATED
FISCAL YEAR 2018-19
ANNUAL BUDGET
STREET LIGHTING ZONE 9**

Maintenance Improvement	Projected Annual Cost	No. of acre(s)	Cost Per acre
Streetlights	\$1,224.00	16.23	\$75.42
Total Maintenance Improvement Costs	\$1,224.00	Cost Per acre	\$75.42

Incidental	Projected Annual Cost	No. of acre(s)	Cost Per acre
Administrative Costs	\$255.00	16.23	\$15.71
Contingency	\$0.00	16.23	\$0.00
Maintained Positive Fund Balance	\$612.00	16.23	\$37.71
Total Incidental Costs	\$867.00	Cost Per acre	\$53.42

Total Projected Costs \$2,091.00 Cost Per acre \$128.84

Maximum Annual Assessment FY 18-19 \$1,824.67
Maximum Per acre Annual Assessment FY 18-19 \$112.43

Projected Annual Assessment FY 18-19 \$1,824.67
Projected Per acre Annual Assessment FY 18-19 \$112.43

**LANDSCAPING AND LIGHTING MAINTENANCE DISTRICT NO. 89-1 CONSOLIDATED
FISCAL YEAR 2018-19
ANNUAL BUDGET
STREET LIGHTING ZONE 11**

	Projected Annual Cost	No. of acre(s)	Cost Per acre
Maintenance Improvement			
Streetlights	\$321.30	4.43	\$72.53
Total Maintenance Improvement Costs	\$321.30	Cost Per acre	\$72.53
	Projected Annual Cost	No. of acre(s)	Cost Per acre
Incidental			
Administrative Costs	\$51.00	4.43	\$11.51
Contingency	\$0.00	4.43	\$0.00
Maintained Positive Fund Balance	\$153.00	4.43	\$34.54
Total Incidental Costs	\$204.00	Cost Per acre	\$46.05
Total Projected Costs	\$525.30	Cost Per acre	\$118.58

Maximum Annual Assessment FY 18-19 \$314.93
Maximum Per acre Annual Assessment FY 18-19 \$71.09

Projected Annual Assessment FY 18-19 \$314.93
Projected Per acre Annual Assessment FY 18-19 \$71.09

Street Lighting Zone 11 is not yet maintained. Should that status remain the same prior to submission of fixed charges to the County of Riverside Auditor-Controller's Office, the assessment will not be submitted and therefore not collected.

**LANDSCAPING AND LIGHTING MAINTENANCE DISTRICT NO. 89-1 CONSOLIDATED
FISCAL YEAR 2018-19
ANNUAL BUDGET
STREET LIGHTING ZONE 12**

	Projected Annual Cost	No. of acre(s)	Cost Per acre
Maintenance Improvement			
Streetlights	\$1,224.00	10.79	\$113.44
Total Maintenance Improvement Costs	\$1,224.00	Cost Per acre	\$113.44
Incidental			
Administrative Costs	\$102.00	10.79	\$9.45
Contingency	\$0.00	10.79	\$0.00
Maintained Positive Fund Balance	\$612.00	10.79	\$56.72
Total Incidental Costs	\$714.00	Cost Per acre	\$66.17
Total Projected Costs	\$1,938.00	Cost Per acre	\$179.61

Maximum Annual Assessment FY 18-19 \$1,431.87
Maximum Per acre Annual Assessment FY 18-19 \$132.70

Projected Annual Assessment FY 18-19 \$1,431.87
Projected Per acre Annual Assessment FY 18-19 \$132.70

Street Lighting Zone 12 is not yet maintained. Should that status remain the same prior to submission of fixed charges to the County of Riverside Auditor-Controller's Office, the assessment will not be submitted and therefore not collected.

**LANDSCAPING AND LIGHTING MAINTENANCE DISTRICT NO. 89-1 CONSOLIDATED
FISCAL YEAR 2018-19
ANNUAL BUDGET
STREET LIGHTING ZONE 13**

	Projected Annual Cost	No. of acre(s)	Cost Per acre
Maintenance Improvement			
Streetlights	\$1,530.00	9.69	\$157.89
Total Maintenance Improvement Costs	\$1,530.00	Cost Per acre	\$157.89
Incidental			
Administrative Costs	\$153.00	9.69	\$15.79
Contingency	\$0.00	9.69	\$0.00
Maintained Positive Fund Balance	\$765.00	9.69	\$78.95
Total Incidental Costs	\$918.00	Cost Per acre	\$94.74
Total Projected Costs	\$2,448.00	Cost Per acre	\$252.63

Maximum Annual Assessment FY 18-19 \$2,032.53
Maximum Per acre Annual Assessment FY 18-19 \$209.76

Projected Annual Assessment FY 18-19 \$2,032.53
Projected Per acre Annual Assessment FY 18-19 \$209.76

**LANDSCAPING AND LIGHTING MAINTENANCE DISTRICT NO. 89-1 CONSOLIDATED
FISCAL YEAR 2018-19
ANNUAL BUDGET
STREET LIGHTING ZONE 14**

Maintenance Improvement	Projected Annual Cost	No. of parcel(s)	Cost Per parcel
Streetlights	\$219.30	1	\$219.30
Total Maintenance Improvement Costs	\$219.30	Cost Per parcel	\$219.30

Incidental	Projected Annual Cost	No. of parcel(s)	Cost Per parcel
Administrative Costs	\$510.00	1	\$510.00
Contingency	\$0.00	1	\$0.00
Maintained Positive Fund Balance	\$102.00	1	\$102.00
Total Incidental Costs	\$612.00	Cost Per parcel	\$612.00

Total Projected Costs \$831.30 Cost Per parcel \$831.30

Maximum Annual Assessment FY 18-19 \$288.85
Maximum Per parcel Annual Assessment FY 18-19 \$288.85

Projected Annual Assessment FY 18-19 \$288.85
Projected Per parcel Annual Assessment FY 18-19 \$288.85

**LANDSCAPING AND LIGHTING MAINTENANCE DISTRICT NO. 89-1 CONSOLIDATED
FISCAL YEAR 2018-19
ANNUAL BUDGET
STREET LIGHTING ZONE 16**

	Projected Annual Cost	No. of acre(s)	Cost Per acre
Maintenance Improvement			
Streetlights	\$1,326.00	77.03	\$17.21
Total Maintenance Improvement Costs	\$1,326.00	Cost Per acre	\$17.21
	Projected Annual Cost	No. of acre(s)	Cost Per acre
Incidental			
Administrative Costs	\$153.00	77.03	\$1.99
Contingency	\$0.00	77.03	\$0.00
Maintained Positive Fund Balance	\$663.00	77.03	\$8.61
Total Incidental Costs	\$816.00	Cost Per acre	\$10.59
Total Projected Costs	\$2,142.00	Cost Per acre	\$27.81

Maximum Annual Assessment FY 18-19 \$1,666.15
Maximum Per acre Annual Assessment FY 18-19 \$21.63

Projected Annual Assessment FY 18-19 \$1,666.15
Projected Per acre Annual Assessment FY 18-19 \$21.63

**LANDSCAPING AND LIGHTING MAINTENANCE DISTRICT NO. 89-1 CONSOLIDATED
FISCAL YEAR 2018-19
ANNUAL BUDGET
STREET LIGHTING ZONE 20**

Maintenance Improvement	Projected Annual Cost	No. of parcel(s)	Cost Per parcel
Streetlights	\$663.00	20	\$33.15
Total Maintenance Improvement Costs	\$663.00	Cost Per parcel	\$33.15

Incidental	Projected Annual Cost	No. of parcel(s)	Cost Per parcel
Administrative Costs	\$102.00	20	\$5.10
Contingency	\$0.00	20	\$0.00
Maintained Positive Fund Balance	\$331.50	20	\$16.58
Total Incidental Costs	\$433.50	Cost Per parcel	\$21.68

Total Projected Costs \$1,096.50 Cost Per parcel \$54.83

Maximum Annual Assessment FY 18-19 \$788.42
Maximum Per parcel Annual Assessment FY 18-19 \$39.42

Projected Annual Assessment FY 18-19 \$788.42
Projected Per parcel Annual Assessment FY 18-19 \$39.42

**LANDSCAPING AND LIGHTING MAINTENANCE DISTRICT NO. 89-1 CONSOLIDATED
FISCAL YEAR 2018-19
ANNUAL BUDGET
STREET LIGHTING ZONE 21**

	Projected Annual Cost	No. of parcel(s)	Cost Per parcel
Maintenance Improvement			
Streetlights	\$229.50	5	\$45.90
Total Maintenance Improvement Costs	\$229.50	Cost Per parcel	\$45.90
	Projected Annual Cost	No. of parcel(s)	Cost Per parcel
Incidental			
Administrative Costs	\$51.00	5	\$10.20
Contingency	\$0.00	5	\$0.00
Maintained Positive Fund Balance	\$127.50	5	\$25.50
Total Incidental Costs	\$178.50	Cost Per parcel	\$35.70
Total Projected Costs	\$408.00	Cost Per parcel	\$81.60

Maximum Annual Assessment FY 18-19 \$303.95
Maximum Per parcel Annual Assessment FY 18-19 \$60.79

Projected Annual Assessment FY 18-19 \$303.95
Projected Per parcel Annual Assessment FY 18-19 \$60.79

**LANDSCAPING AND LIGHTING MAINTENANCE DISTRICT NO. 89-1 CONSOLIDATED
FISCAL YEAR 2018-19
ANNUAL BUDGET
STREET LIGHTING ZONE 22**

Maintenance Improvement	Projected Annual Cost	No. of acre(s)	Cost Per acre
Streetlights	\$663.00	19.94	\$33.25
Total Maintenance Improvement Costs	\$663.00	Cost Per acre	\$33.25

Incidental	Projected Annual Cost	No. of acre(s)	Cost Per acre
Administrative Costs	\$102.00	19.94	\$5.12
Contingency	\$0.00	19.94	\$0.00
Maintained Positive Fund Balance	\$331.50	19.94	\$16.62
Total Incidental Costs	\$433.50	Cost Per acre	\$21.74

Total Projected Costs \$1,096.50 Cost Per acre \$54.99

Maximum Annual Assessment FY 18-19 \$927.74
Maximum Per acre Annual Assessment FY 18-19 \$46.53

Projected Annual Assessment FY 18-19 \$927.74
Projected Per acre Annual Assessment FY 18-19 \$46.53

**LANDSCAPING AND LIGHTING MAINTENANCE DISTRICT NO. 89-1 CONSOLIDATED
FISCAL YEAR 2018-19
ANNUAL BUDGET
STREET LIGHTING ZONE 25**

Maintenance Improvement	Projected Annual Cost	No. of acre(s)	Cost Per acre
Streetlights	\$255.00	2.38	\$107.14
Total Maintenance Improvement Costs	\$255.00	Cost Per acre	\$107.14
Incidental	Projected Annual Cost	No. of acre(s)	Cost Per acre
Administrative Costs	\$51.00	2.38	\$21.43
Contingency	\$0.00	2.38	\$0.00
Maintained Positive Fund Balance	\$127.50	2.38	\$53.57
Total Incidental Costs	\$178.50	Cost Per acre	\$75.00
Total Projected Costs	\$433.50	Cost Per acre	\$182.14

Maximum Annual Assessment FY 18-19 \$299.52
Maximum Per acre Annual Assessment FY 18-19 \$125.85

Projected Annual Assessment FY 18-19 \$299.52
Projected Per acre Annual Assessment FY 18-19 \$125.85

**LANDSCAPING AND LIGHTING MAINTENANCE DISTRICT NO. 89-1 CONSOLIDATED
FISCAL YEAR 2018-19
ANNUAL BUDGET
STREET LIGHTING ZONE 29**

	Projected Annual Cost	No. of acre(s)	Cost Per acre
Maintenance Improvement			
Streetlights	\$1,122.00	8.42	\$133.25
Total Maintenance Improvement Costs	\$1,122.00	Cost Per acre	\$133.25

	Projected Annual Cost	No. of acre(s)	Cost Per acre
Incidental			
Administrative Costs	\$153.00	8.42	\$18.17
Contingency	\$0.00	8.42	\$0.00
Maintained Positive Fund Balance	\$561.00	8.42	\$66.63
Total Incidental Costs	\$714.00	Cost Per acre	\$84.80

Total Projected Costs	\$1,836.00	Cost Per acre	\$218.05
------------------------------	-------------------	----------------------	-----------------

Maximum Annual Assessment FY 18-19	\$1,613.93
Maximum Per acre Annual Assessment FY 18-19	\$191.68

Projected Annual Assessment FY 18-19	\$1,613.93
Projected Per acre Annual Assessment FY 18-19	\$191.68

**LANDSCAPING AND LIGHTING MAINTENANCE DISTRICT NO. 89-1 CONSOLIDATED
FISCAL YEAR 2018-19
ANNUAL BUDGET
STREET LIGHTING ZONE 30**

	Projected Annual Cost	No. of acre(s)	Cost Per acre
Maintenance Improvement			
Streetlights	\$280.50	57.50	\$4.88
Total Maintenance Improvement Costs	\$280.50	Cost Per acre	\$4.88
	Projected Annual Cost	No. of acre(s)	Cost Per acre
Incidental			
Administrative Costs	\$51.00	57.50	\$0.89
Contingency	\$0.00	57.50	\$0.00
Maintained Positive Fund Balance	\$153.00	57.50	\$2.66
Total Incidental Costs	\$204.00	Cost Per acre	\$3.55
Total Projected Costs	\$484.50	Cost Per acre	\$8.43

Maximum Annual Assessment FY 18-19 \$409.19
Maximum Per acre Annual Assessment FY 18-19 \$7.12

Projected Annual Assessment FY 18-19 \$409.19
Projected Per acre Annual Assessment FY 18-19 \$7.12

**LANDSCAPING AND LIGHTING MAINTENANCE DISTRICT NO. 89-1 CONSOLIDATED
FISCAL YEAR 2018-19
ANNUAL BUDGET
STREET LIGHTING ZONE 31**

Maintenance Improvement	Projected Annual Cost	No. of acre(s)	Cost Per acre
Streetlights	\$255.00	1.47	\$173.47
Total Maintenance Improvement Costs	\$255.00	Cost Per acre	\$173.47

Incidental	Projected Annual Cost	No. of acre(s)	Cost Per acre
Administrative Costs	\$51.00	1.47	\$34.69
Contingency	\$0.00	1.47	\$0.00
Maintained Positive Fund Balance	\$127.50	1.47	\$86.73
Total Incidental Costs	\$178.50	Cost Per acre	\$121.43

Total Projected Costs \$433.50 Cost Per acre \$294.90

Maximum Annual Assessment FY 18-19 \$301.98
Maximum Per acre Annual Assessment FY 18-19 \$205.43

Projected Annual Assessment FY 18-19 \$301.98
Projected Per acre Annual Assessment FY 18-19 \$205.43

**LANDSCAPING AND LIGHTING MAINTENANCE DISTRICT NO. 89-1 CONSOLIDATED
FISCAL YEAR 2018-19
ANNUAL BUDGET
STREET LIGHTING ZONE 36**

Maintenance Improvement	Projected Annual Cost	No. of acre(s)	Cost Per acre
Streetlights	\$459.00	11.26	\$40.76
Total Maintenance Improvement Costs	\$459.00	Cost Per acre	\$40.76

Incidental	Projected Annual Cost	No. of acre(s)	Cost Per acre
Administrative Costs	\$51.00	11.26	\$4.53
Contingency	\$0.00	11.26	\$0.00
Maintained Positive Fund Balance	\$229.50	11.26	\$20.38
Total Incidental Costs	\$280.50	Cost Per acre	\$24.91

Total Projected Costs	\$739.50	Cost Per acre	\$65.67
------------------------------	-----------------	----------------------	----------------

Maximum Annual Assessment FY 18-19 \$619.48
Maximum Per acre Annual Assessment FY 18-19 \$55.02

Projected Annual Assessment FY 18-19 \$619.48
Projected Per acre Annual Assessment FY 18-19 \$55.02

**LANDSCAPING AND LIGHTING MAINTENANCE DISTRICT NO. 89-1 CONSOLIDATED
FISCAL YEAR 2018-19
ANNUAL BUDGET
STREET LIGHTING ZONE 37**

Maintenance Improvement	Projected Annual Cost	No. of acre(s)	Cost Per acre
Streetlights	\$637.50	9.27	\$68.77
Total Maintenance Improvement Costs	\$637.50	Cost Per acre	\$68.77

Incidental	Projected Annual Cost	No. of acre(s)	Cost Per acre
Administrative Costs	\$102.00	9.27	\$11.00
Contingency	\$0.00	9.27	\$0.00
Maintained Positive Fund Balance	\$306.00	9.27	\$33.01
Total Incidental Costs	\$408.00	Cost Per acre	\$44.01

Total Projected Costs	\$1,045.50	Cost Per acre	\$112.78
------------------------------	-------------------	----------------------	-----------------

Maximum Annual Assessment FY 18-19	\$808.69
Maximum Per acre Annual Assessment FY 18-19	\$87.24

Projected Annual Assessment FY 18-19	\$808.69
Projected Per acre Annual Assessment FY 18-19	\$87.24

**LANDSCAPING AND LIGHTING MAINTENANCE DISTRICT NO. 89-1 CONSOLIDATED
FISCAL YEAR 2018-19
ANNUAL BUDGET
STREET LIGHTING ZONE 38**

	Projected Annual Cost	No. of acre(s)	Cost Per acre
Maintenance Improvement			
Streetlights	\$229.50	0.36	\$637.50
Total Maintenance Improvement Costs	\$229.50	Cost Per acre	\$637.50
	Projected Annual Cost	No. of acre(s)	Cost Per acre
Incidental			
Administrative Costs	\$51.00	0.36	\$141.67
Contingency	\$0.00	0.36	\$0.00
Maintained Positive Fund Balance	\$127.50	0.36	\$354.17
Total Incidental Costs	\$178.50	Cost Per acre	\$495.83
Total Projected Costs	\$408.00	Cost Per acre	\$1,133.33

Maximum Annual Assessment FY 18-19 \$318.21
Maximum Per acre Annual Assessment FY 18-19 \$883.91

Projected Annual Assessment FY 18-19 \$318.21
Projected Per acre Annual Assessment FY 18-19 \$883.91

**LANDSCAPING AND LIGHTING MAINTENANCE DISTRICT NO. 89-1 CONSOLIDATED
FISCAL YEAR 2018-19
ANNUAL BUDGET
STREET LIGHTING ZONE 42**

Maintenance Improvement	Projected Annual Cost	No. of acre(s)	Cost Per acre
Streetlights	\$459.00	3	\$153.00
Total Maintenance Improvement Costs	\$459.00	Cost Per acre	\$153.00

Incidental	Projected Annual Cost	No. of acre(s)	Cost Per acre
Administrative Costs	\$51.00	3	\$17.00
Contingency	\$0.00	3	\$0.00
Maintained Positive Fund Balance	\$229.50	3	\$76.50
Total Incidental Costs	\$280.50	Cost Per acre	\$93.50

Total Projected Costs \$739.50 Cost Per acre \$246.50

Maximum Annual Assessment FY 18-19 \$578.20
Maximum Per acre Annual Assessment FY 18-19 \$192.73

Projected Annual Assessment FY 18-19 \$578.20
Projected Per acre Annual Assessment FY 18-19 \$192.73

**LANDSCAPING AND LIGHTING MAINTENANCE DISTRICT NO. 89-1 CONSOLIDATED
FISCAL YEAR 2018-19
ANNUAL BUDGET
STREET LIGHTING ZONE 43**

Maintenance Improvement	Projected Annual Cost	No. of parcel(s)	Cost Per parcel
Streetlights	\$331.50	5	\$66.30
Total Maintenance Improvement Costs	\$331.50	Cost Per parcel	\$66.30
Incidental	Projected Annual Cost	No. of parcel(s)	Cost Per parcel
Administrative Costs	\$51.00	5	\$10.20
Contingency	\$0.00	5	\$0.00
Maintained Positive Fund Balance	\$153.00	5	\$30.60
Total Incidental Costs	\$204.00	Cost Per parcel	\$40.80
Total Projected Costs	\$535.50	Cost Per parcel	\$107.10

Maximum Annual Assessment FY 18-19 \$448.57
Maximum Per parcel Annual Assessment FY 18-19 \$89.71

Projected Annual Assessment FY 18-19 \$448.57
Projected Per parcel Annual Assessment FY 18-19 \$89.71

**LANDSCAPING AND LIGHTING MAINTENANCE DISTRICT NO. 89-1 CONSOLIDATED
FISCAL YEAR 2018-19
ANNUAL BUDGET
STREET LIGHTING ZONE 44**

Maintenance Improvement	Projected Annual Cost	No. of acre(s)	Cost Per acre
Streetlights	\$816.00	4.89	\$166.87
Total Maintenance Improvement Costs	\$816.00	Cost Per acre	\$166.87

Incidental	Projected Annual Cost	No. of acre(s)	Cost Per acre
Administrative Costs	\$153.00	4.89	\$31.29
Contingency	\$0.00	4.89	\$0.00
Maintained Positive Fund Balance	\$408.00	4.89	\$83.44
Total Incidental Costs	\$561.00	Cost Per acre	\$114.72

Total Projected Costs \$1,377.00 Cost Per acre \$281.60

Maximum Annual Assessment FY 18-19 \$1,210.53
Maximum Per acre Annual Assessment FY 18-19 \$247.55

Projected Annual Assessment FY 18-19 \$1,210.53
Projected Per acre Annual Assessment FY 18-19 \$247.55

**LANDSCAPING AND LIGHTING MAINTENANCE DISTRICT NO. 89-1 CONSOLIDATED
FISCAL YEAR 2018-19
ANNUAL BUDGET
STREET LIGHTING ZONE 45**

Maintenance Improvement	Projected Annual Cost	No. of acre(s)	Cost Per acre
Streetlights	\$229.50	10.18	\$22.54
Total Maintenance Improvement Costs	\$229.50	Cost Per acre	\$22.54

Incidental	Projected Annual Cost	No. of acre(s)	Cost Per acre
Administrative Costs	\$51.00	10.18	\$5.01
Contingency	\$0.00	10.18	\$0.00
Maintained Positive Fund Balance	\$127.50	10.18	\$12.52
Total Incidental Costs	\$178.50	Cost Per acre	\$17.53

Total Projected Costs \$408.00 Cost Per acre \$40.08

Maximum Annual Assessment FY 18-19 \$312.34
Maximum Per acre Annual Assessment FY 18-19 \$30.68

Projected Annual Assessment FY 18-19 \$312.34
Projected Per acre Annual Assessment FY 18-19 \$30.68

**LANDSCAPING AND LIGHTING MAINTENANCE DISTRICT NO. 89-1 CONSOLIDATED
FISCAL YEAR 2018-19
ANNUAL BUDGET
STREET LIGHTING ZONE 46**

	Projected Annual Cost	No. of acre(s)	Cost Per acre
Maintenance Improvement			
Streetlights	\$255.00	8.24	\$30.95
Total Maintenance Improvement Costs	\$255.00	Cost Per acre	\$30.95
Incidental			
Administrative Costs	\$51.00	8.24	\$6.19
Contingency	\$0.00	8.24	\$0.00
Maintained Positive Fund Balance	\$127.50	8.24	\$15.47
Total Incidental Costs	\$178.50	Cost Per acre	\$21.66
Total Projected Costs	\$433.50	Cost Per acre	\$52.61

Maximum Annual Assessment FY 18-19 **\$371.21**
Maximum Per acre Annual Assessment FY 18-19 **\$45.05**

Projected Annual Assessment FY 18-19 **\$371.21**
Projected Per acre Annual Assessment FY 18-19 **\$45.05**

Street Lighting Zone 46 is not yet maintained. Should that status remain the same prior to submission of fixed charges to the County of Riverside Auditor-Controller's Office, the assessment will not be submitted and therefore not collected.

**LANDSCAPING AND LIGHTING MAINTENANCE DISTRICT NO. 89-1 CONSOLIDATED
FISCAL YEAR 2018-19
ANNUAL BUDGET
STREET LIGHTING ZONE 47**

	Projected Annual Cost	No. of acre(s)	Cost Per acre
Maintenance Improvement			
Streetlights	\$4,590.00	77.03	\$59.59
Total Maintenance Improvement Costs	\$4,590.00	Cost Per acre	\$59.59
Incidental			
Administrative Costs	\$510.00	77.03	\$6.62
Contingency	\$0.00	77.03	\$0.00
Maintained Positive Fund Balance	\$2,244.00	77.03	\$29.13
Total Incidental Costs	\$2,754.00	Cost Per acre	\$35.75
Total Projected Costs	\$7,344.00	Cost Per acre	\$95.34

Maximum Annual Assessment FY 18-19 \$5,767.82
Maximum Per acre Annual Assessment FY 18-19 \$74.88

Projected Annual Assessment FY 18-19 \$5,767.82
Projected Per acre Annual Assessment FY 18-19 \$74.88

**LANDSCAPING AND LIGHTING MAINTENANCE DISTRICT NO. 89-1 CONSOLIDATED
FISCAL YEAR 2018-19
ANNUAL BUDGET
STREET LIGHTING ZONE 48**

Maintenance Improvement	Projected Annual Cost	No. of acre(s)	Cost Per acre
Streetlights	\$739.50	17.77	\$41.62
Total Maintenance Improvement Costs	\$739.50	Cost Per acre	\$41.62

Incidental	Projected Annual Cost	No. of acre(s)	Cost Per acre
Administrative Costs	\$102.00	17.77	\$5.74
Contingency	\$0.00	17.77	\$0.00
Maintained Positive Fund Balance	\$357.00	17.77	\$20.09
Total Incidental Costs	\$459.00	Cost Per acre	\$25.83

Total Projected Costs	\$1,198.50	Cost Per acre	\$67.45
------------------------------	-------------------	----------------------	----------------

Maximum Annual Assessment FY 18-19	\$983.56
Maximum Per acre Annual Assessment FY 18-19	\$55.35

Projected Annual Assessment FY 18-19	\$983.56
Projected Per acre Annual Assessment FY 18-19	\$55.35

**LANDSCAPING AND LIGHTING MAINTENANCE DISTRICT NO. 89-1 CONSOLIDATED
FISCAL YEAR 2018-19
ANNUAL BUDGET
STREET LIGHTING ZONE 52**

	Projected Annual Cost	No. of acre(s)	Cost Per acre
Maintenance Improvement			
Streetlights	\$816.00	8.75	\$93.26
Total Maintenance Improvement Costs	\$816.00	Cost Per acre	\$93.26
	Projected Annual Cost	No. of acre(s)	Cost Per acre
Incidental			
Administrative Costs	\$51.00	8.75	\$5.83
Contingency	\$0.00	8.75	\$0.00
Maintained Positive Fund Balance	\$408.00	8.75	\$46.63
Total Incidental Costs	\$459.00	Cost Per acre	\$52.46
Total Projected Costs	\$1,275.00	Cost Per acre	\$145.71

Maximum Annual Assessment FY 18-19 **\$1,104.53**
Maximum Per acre Annual Assessment FY 18-19 **\$126.23**

Projected Annual Assessment FY 18-19 **\$1,104.53**
Projected Per acre Annual Assessment FY 18-19 **\$126.23**

**LANDSCAPING AND LIGHTING MAINTENANCE DISTRICT NO. 89-1 CONSOLIDATED
FISCAL YEAR 2018-19
ANNUAL BUDGET
STREET LIGHTING ZONE 53**

Maintenance Improvement	Projected Annual Cost	No. of acre(s)	Cost Per acre
Streetlights	\$229.50	11.45	\$20.04
Total Maintenance Improvement Costs	\$229.50	Cost Per acre	\$20.04

Incidental	Projected Annual Cost	No. of acre(s)	Cost Per acre
Administrative Costs	\$51.00	11.45	\$4.45
Contingency	\$0.00	11.45	\$0.00
Maintained Positive Fund Balance	\$204.00	11.45	\$17.82
Total Incidental Costs	\$255.00	Cost Per acre	\$22.27

Total Projected Costs \$484.50 Cost Per acre \$42.31

Maximum Annual Assessment FY 18-19 \$465.78
Maximum Per acre Annual Assessment FY 18-19 \$40.68

Projected Annual Assessment FY 18-19 \$465.78
Projected Per acre Annual Assessment FY 18-19 \$40.68

**LANDSCAPING AND LIGHTING MAINTENANCE DISTRICT NO. 89-1 CONSOLIDATED
FISCAL YEAR 2018-19
ANNUAL BUDGET
STREET LIGHTING ZONE 54**

	Projected Annual Cost	No. of acre(s)	Cost Per acre
Maintenance Improvement			
Streetlights	\$663.00	5.69	\$116.52
Total Maintenance Improvement Costs	\$663.00	Cost Per acre	\$116.52

	Projected Annual Cost	No. of acre(s)	Cost Per acre
Incidental			
Administrative Costs	\$102.00	5.69	\$17.93
Contingency	\$0.00	5.69	\$0.00
Maintained Positive Fund Balance	\$331.50	5.69	\$58.26
Total Incidental Costs	\$433.50	Cost Per acre	\$76.19

Total Projected Costs \$1,096.50 Cost Per acre \$192.71

Maximum Annual Assessment FY 18-19 \$918.53
Maximum Per acre Annual Assessment FY 18-19 \$161.43

Projected Annual Assessment FY 18-19 \$918.53
Projected Per acre Annual Assessment FY 18-19 \$161.43

**LANDSCAPING AND LIGHTING MAINTENANCE DISTRICT NO. 89-1 CONSOLIDATED
FISCAL YEAR 2018-19
ANNUAL BUDGET
STREET LIGHTING ZONE 55**

Maintenance Improvement	Projected Annual Cost	No. of acre(s)	Cost Per acre
Streetlights	\$255.00	3.94	\$64.72
Total Maintenance Improvement Costs	\$255.00	Cost Per acre	\$64.72

Incidental	Projected Annual Cost	No. of acre(s)	Cost Per acre
Administrative Costs	\$459.00	3.94	\$116.50
Contingency	\$0.00	3.94	\$0.00
Maintained Positive Fund Balance	\$229.50	3.94	\$58.25
Total Incidental Costs	\$688.50	Cost Per acre	\$174.75

Total Projected Costs	\$943.50	Cost Per acre	\$239.47
------------------------------	-----------------	----------------------	-----------------

Maximum Annual Assessment FY 18-19	\$890.57
Maximum Per acre Annual Assessment FY 18-19	\$226.03

Projected Annual Assessment FY 18-19	\$890.57
Projected Per acre Annual Assessment FY 18-19	\$226.03

**LANDSCAPING AND LIGHTING MAINTENANCE DISTRICT NO. 89-1 CONSOLIDATED
FISCAL YEAR 2018-19
ANNUAL BUDGET
STREET LIGHTING ZONE 56**

Maintenance Improvement	Projected Annual Cost	No. of acre(s)	Cost Per acre
Streetlights	\$153.00	57.50	\$2.66
Total Maintenance Improvement Costs	\$153.00	Cost Per acre	\$2.66

Incidental	Projected Annual Cost	No. of acre(s)	Cost Per acre
Administrative Costs	\$51.00	57.50	\$0.89
Contingency	\$0.00	57.50	\$0.00
Maintained Positive Fund Balance	\$76.50	57.50	\$1.33
Total Incidental Costs	\$127.50	Cost Per acre	\$2.22

Total Projected Costs \$280.50 Cost Per acre \$4.88

Maximum Annual Assessment FY 18-19 \$221.35
Maximum Per acre Annual Assessment FY 18-19 \$3.85

Projected Annual Assessment FY 18-19 \$221.35
Projected Per acre Annual Assessment FY 18-19 \$3.85

**LANDSCAPING AND LIGHTING MAINTENANCE DISTRICT NO. 89-1 CONSOLIDATED
FISCAL YEAR 2018-19
ANNUAL BUDGET
STREET LIGHTING ZONE 57**

Maintenance Improvement	Projected Annual Cost	No. of acre(s)	Cost Per acre
Streetlights	\$1,173.00	14.99	\$78.25
Total Maintenance Improvement Costs	\$1,173.00	Cost Per acre	\$78.25

Incidental	Projected Annual Cost	No. of acre(s)	Cost Per acre
Administrative Costs	\$153.00	14.99	\$10.21
Contingency	\$0.00	14.99	\$0.00
Maintained Positive Fund Balance	\$561.00	14.99	\$37.42
Total Incidental Costs	\$714.00	Cost Per acre	\$47.63

Total Projected Costs \$1,887.00 Cost Per acre \$125.88

Maximum Annual Assessment FY 18-19 \$1,502.48
Maximum Per acre Annual Assessment FY 18-19 \$100.23

Projected Annual Assessment FY 18-19 \$1,502.48
Projected Per acre Annual Assessment FY 18-19 \$100.23

**LANDSCAPING AND LIGHTING MAINTENANCE DISTRICT NO. 89-1 CONSOLIDATED
FISCAL YEAR 2018-19
ANNUAL BUDGET
STREET LIGHTING ZONE 58**

	Projected Annual Cost	No. of acre(s)	Cost Per acre
Maintenance Improvement			
Streetlights	\$1,020.00	167.49	\$6.09
Total Maintenance Improvement Costs	\$1,020.00	Cost Per acre	\$6.09
Incidental			
Administrative Costs	\$102.00	167.49	\$0.61
Contingency	\$0.00	167.49	\$0.00
Maintained Positive Fund Balance	\$408.00	167.49	\$2.44
Total Incidental Costs	\$510.00	Cost Per acre	\$3.05
Total Projected Costs	\$1,530.00	Cost Per acre	\$9.13

Maximum Annual Assessment FY 18-19 \$656.95
Maximum Per acre Annual Assessment FY 18-19 \$3.92

Projected Annual Assessment FY 18-19 \$656.95
Projected Per acre Annual Assessment FY 18-19 \$3.92

Street Lighting Zone 58 is not yet maintained. Should that status remain the same prior to submission of fixed charges to the County of Riverside Auditor-Controller's Office, the assessment will not be submitted and therefore not collected.

**LANDSCAPING AND LIGHTING MAINTENANCE DISTRICT NO. 89-1 CONSOLIDATED
FISCAL YEAR 2018-19
ANNUAL BUDGET
STREET LIGHTING ZONE 61**

Maintenance Improvement	Projected Annual Cost	No. of acre(s)	Cost Per acre
Streetlights	\$229.50	6.19	\$37.08
Total Maintenance Improvement Costs	\$229.50	Cost Per acre	\$37.08

Incidental	Projected Annual Cost	No. of acre(s)	Cost Per acre
Administrative Costs	\$51.00	6.19	\$8.24
Contingency	\$0.00	6.19	\$0.00
Maintained Positive Fund Balance	\$229.50	6.19	\$37.08
Total Incidental Costs	\$280.50	Cost Per acre	\$45.32

Total Projected Costs \$510.00 Cost Per acre \$82.39

Maximum Annual Assessment FY 18-19 \$419.44
Maximum Per acre Annual Assessment FY 18-19 \$67.76

Projected Annual Assessment FY 18-19 \$419.44
Projected Per acre Annual Assessment FY 18-19 \$67.76

**LANDSCAPING AND LIGHTING MAINTENANCE DISTRICT NO. 89-1 CONSOLIDATED
FISCAL YEAR 2018-19
ANNUAL BUDGET
STREET LIGHTING ZONE 64**

	Projected Annual Cost	No. of acre(s)	Cost Per acre
Maintenance Improvement			
Streetlights	\$510.00	0.62	\$822.58
Total Maintenance Improvement Costs	\$510.00	Cost Per acre	\$822.58
Incidental			
Administrative Costs	\$153.00	0.62	\$246.77
Contingency	\$0.00	0.62	\$0.00
Maintained Positive Fund Balance	\$255.00	0.62	\$411.29
Total Incidental Costs	\$408.00	Cost Per acre	\$658.06
Total Projected Costs	\$918.00	Cost Per acre	\$1,480.65

Maximum Annual Assessment FY 18-19 \$1,236.96
Maximum Per acre Annual Assessment FY 18-19 \$1,995.09

Projected Annual Assessment FY 18-19 \$918.00
Projected Per acre Annual Assessment FY 18-19 \$1,480.65

**LANDSCAPING AND LIGHTING MAINTENANCE DISTRICT NO. 89-1 CONSOLIDATED
FISCAL YEAR 2018-19
ANNUAL BUDGET
STREET LIGHTING ZONE 65**

Maintenance Improvement	Projected Annual Cost	No. of acre(s)	Cost Per acre
Streetlights	\$918.00	11.50	\$79.83
Total Maintenance Improvement Costs	\$918.00	Cost Per acre	\$79.83

Incidental	Projected Annual Cost	No. of acre(s)	Cost Per acre
Administrative Costs	\$153.00	11.50	\$13.30
Contingency	\$0.00	11.50	\$0.00
Maintained Positive Fund Balance	\$765.00	11.50	\$66.52
Total Incidental Costs	\$918.00	Cost Per acre	\$79.83

Total Projected Costs \$1,836.00 Cost Per acre \$159.65

Maximum Annual Assessment FY 18-19 \$1,825.56
Maximum Per acre Annual Assessment FY 18-19 \$158.74

Projected Annual Assessment FY 18-19 \$1,825.56
Projected Per acre Annual Assessment FY 18-19 \$158.74

**LANDSCAPING AND LIGHTING MAINTENANCE DISTRICT NO. 89-1 CONSOLIDATED
FISCAL YEAR 2018-19
ANNUAL BUDGET
STREET LIGHTING ZONE 66**

Maintenance Improvement	Projected Annual Cost	No. of acre(s)	Cost Per acre
Streetlights	\$510.00	2.01	\$253.73
Total Maintenance Improvement Costs	\$510.00	Cost Per acre	\$253.73
Incidental	Projected Annual Cost	No. of acre(s)	Cost Per acre
Administrative Costs	\$127.50	2.01	\$63.43
Contingency	\$0.00	2.01	\$0.00
Maintained Positive Fund Balance	\$306.00	2.01	\$152.24
Total Incidental Costs	\$433.50	Cost Per acre	\$215.67
Total Projected Costs	\$943.50	Cost Per acre	\$469.40

Maximum Annual Assessment FY 18-19 \$926.34
Maximum Per acre Annual Assessment FY 18-19 \$460.87

Projected Annual Assessment FY 18-19 \$926.34
Projected Per acre Annual Assessment FY 18-19 \$460.87

**LANDSCAPING AND LIGHTING MAINTENANCE DISTRICT NO. 89-1 CONSOLIDATED
FISCAL YEAR 2018-19
ANNUAL BUDGET
STREET LIGHTING ZONE 67**

	Projected Annual Cost	No. of acre(s)	Cost Per acre
Maintenance Improvement			
Streetlights	\$969.00	7.38	\$131.30
Total Maintenance Improvement Costs	\$969.00	Cost Per acre	\$131.30
Incidental			
Administrative Costs	\$408.00	7.38	\$55.28
Contingency	\$0.00	7.38	\$0.00
Maintained Positive Fund Balance	\$969.00	7.38	\$131.30
Total Incidental Costs	\$1,377.00	Cost Per acre	\$186.59
Total Projected Costs	\$2,346.00	Cost Per acre	\$317.89

Maximum Annual Assessment FY 18-19 \$2,327.17
Maximum Per acre Annual Assessment FY 18-19 \$315.33

Projected Annual Assessment FY 18-19 \$2,327.17
Projected Per acre Annual Assessment FY 18-19 \$315.33

**LANDSCAPING AND LIGHTING MAINTENANCE DISTRICT NO. 89-1 CONSOLIDATED
FISCAL YEAR 2018-19
ANNUAL BUDGET
STREET LIGHTING ZONE 68**

	Projected Annual Cost	No. of acre(s)	Cost Per acre
Maintenance Improvement			
Streetlights	\$408.00	423.94	\$0.96
Total Maintenance Improvement Costs	\$408.00	Cost Per acre	\$0.96
	Projected Annual Cost	No. of acre(s)	Cost Per acre
Incidental			
Administrative Costs	\$280.50	423.94	\$0.66
Contingency	\$0.00	423.94	\$0.00
Maintained Positive Fund Balance	\$510.00	423.94	\$1.20
Total Incidental Costs	\$790.50	Cost Per acre	\$1.86
Total Projected Costs	\$1,198.50	Cost Per acre	\$2.83

Maximum Annual Assessment FY 18-19 \$1,182.06
Maximum Per acre Annual Assessment FY 18-19 \$2.79

Projected Annual Assessment FY 18-19 \$1,182.07
Projected Per acre Annual Assessment FY 18-19 \$2.79

Street Lighting Zone 68 is not yet maintained. Should that status remain the same prior to submission of fixed charges to the County of Riverside Auditor-Controller's Office, the assessment will not be submitted and therefore not collected.

**LANDSCAPING AND LIGHTING MAINTENANCE DISTRICT NO. 89-1 CONSOLIDATED
FISCAL YEAR 2018-19
ANNUAL BUDGET
STREET LIGHTING ZONE 72**

	Projected Annual Cost	No. of acre(s)	Cost Per acre
Maintenance Improvement			
Streetlights	\$306.00	3.50	\$87.43
Total Maintenance Improvement Costs	\$306.00	Cost Per acre	\$87.43
	Projected Annual Cost	No. of acre(s)	Cost Per acre
Incidental			
Administrative Costs	\$102.00	3.50	\$29.14
Contingency	\$0.00	3.50	\$0.00
Maintained Positive Fund Balance	\$153.00	3.50	\$43.71
Total Incidental Costs	\$255.00	Cost Per acre	\$72.86
Total Projected Costs	\$561.00	Cost Per acre	\$160.29

Maximum Annual Assessment FY 18-19 \$465.48
Maximum Per acre Annual Assessment FY 18-19 \$132.99

Projected Annual Assessment FY 18-19 \$465.48
Projected Per acre Annual Assessment FY 18-19 \$132.99

Street Lighting Zone 72 is not yet maintained. Should that status remain the same prior to submission of fixed charges to the County of Riverside Auditor-Controller's Office, the assessment will not be submitted and therefore not collected.

**LANDSCAPING AND LIGHTING MAINTENANCE DISTRICT NO. 89-1 CONSOLIDATED
FISCAL YEAR 2018-19
ANNUAL BUDGET
STREET LIGHTING ZONE 74**

Maintenance Improvement	Projected Annual Cost	No. of acre(s)	Cost Per acre
Streetlights	\$153.00	1	\$153.00
Total Maintenance Improvement Costs	\$153.00	Cost Per acre	\$153.00

Incidental	Projected Annual Cost	No. of acre(s)	Cost Per acre
Administrative Costs	\$102.00	1	\$102.00
Contingency	\$0.00	1	\$0.00
Maintained Positive Fund Balance	\$229.50	1	\$229.50
Total Incidental Costs	\$331.50	Cost Per acre	\$331.50

Total Projected Costs \$484.50 Cost Per acre \$484.50

Maximum Annual Assessment FY 18-19 \$465.46
Maximum Per acre Annual Assessment FY 18-19 \$465.46

Projected Annual Assessment FY 18-19 \$465.46
Projected Per acre Annual Assessment FY 18-19 \$465.46

**LANDSCAPING AND LIGHTING MAINTENANCE DISTRICT NO. 89-1 CONSOLIDATED
FISCAL YEAR 2018-19
ANNUAL BUDGET
STREET LIGHTING ZONE 75**

	Projected Annual Cost	No. of acre(s)	Cost Per acre
Maintenance Improvement			
Streetlights	\$255.00	3.97	\$64.23
Total Maintenance Improvement Costs	\$255.00	Cost Per acre	\$64.23
Incidental			
Administrative Costs	\$102.00	3.97	\$25.69
Contingency	\$0.00	3.97	\$0.00
Maintained Positive Fund Balance	\$127.50	3.97	\$32.12
Total Incidental Costs	\$229.50	Cost Per acre	\$57.81
Total Projected Costs	\$484.50	Cost Per acre	\$122.04

Maximum Annual Assessment FY 18-19 \$465.41
Maximum Per acre Annual Assessment FY 18-19 \$117.23

Projected Annual Assessment FY 18-19 \$465.41
Projected Per acre Annual Assessment FY 18-19 \$117.23

**LANDSCAPING AND LIGHTING MAINTENANCE DISTRICT NO. 89-1 CONSOLIDATED
FISCAL YEAR 2018-19
ANNUAL BUDGET
STREET LIGHTING ZONE 76**

	Projected Annual Cost	No. of acre(s)	Cost Per acre
Maintenance Improvement			
Streetlights	\$255.00	0.97	\$262.89
Total Maintenance Improvement Costs	\$255.00	Cost Per acre	\$262.89
Incidental			
Administrative Costs	\$102.00	0.97	\$105.15
Contingency	\$0.00	0.97	\$0.00
Maintained Positive Fund Balance	\$127.50	0.97	\$131.44
Total Incidental Costs	\$229.50	Cost Per acre	\$236.60
Total Projected Costs	\$484.50	Cost Per acre	\$499.48

Maximum Annual Assessment FY 18-19 \$438.34
Maximum Per acre Annual Assessment FY 18-19 \$451.90

Projected Annual Assessment FY 18-19 \$438.34
Projected Per acre Annual Assessment FY 18-19 \$451.90

**LANDSCAPING AND LIGHTING MAINTENANCE DISTRICT NO. 89-1 CONSOLIDATED
FISCAL YEAR 2018-19
ANNUAL BUDGET
STREET LIGHTING ZONE 78**

	Projected Annual Cost	No. of acre(s)	Cost Per acre
Maintenance Improvement			
Streetlights	\$918.00	12.19	\$75.31
Total Maintenance Improvement Costs	\$918.00	Cost Per acre	\$75.31
Incidental			
Administrative Costs	\$357.00	12.19	\$29.29
Contingency	\$0.00	12.19	\$0.00
Maintained Positive Fund Balance	\$561.00	12.19	\$46.02
Total Incidental Costs	\$918.00	Cost Per acre	\$75.31
Total Projected Costs	\$1,836.00	Cost Per acre	\$150.62

Maximum Annual Assessment FY 18-19 \$1,802.69
Maximum Per acre Annual Assessment FY 18-19 \$147.88

Projected Annual Assessment FY 18-19 \$1,802.69
Projected Per acre Annual Assessment FY 18-19 \$147.88

**LANDSCAPING AND LIGHTING MAINTENANCE DISTRICT NO. 89-1 CONSOLIDATED
FISCAL YEAR 2018-19
ANNUAL BUDGET
STREET LIGHTING ZONE 81**

Maintenance Improvement	Projected Annual Cost	No. of acre(s)	Cost Per acre
Streetlights	\$510.00	3.49	\$146.13
Total Maintenance Improvement Costs	\$510.00	Cost Per acre	\$146.13

Incidental	Projected Annual Cost	No. of acre(s)	Cost Per acre
Administrative Costs	\$255.00	3.49	\$73.07
Contingency	\$0.00	3.49	\$0.00
Maintained Positive Fund Balance	\$561.00	3.49	\$160.75
Total Incidental Costs	\$816.00	Cost Per acre	\$233.81

Total Projected Costs \$1,326.00 Cost Per acre \$379.94

Maximum Annual Assessment FY 18-19 \$1,284.43
Maximum Per acre Annual Assessment FY 18-19 \$368.03

Projected Annual Assessment FY 18-19 \$1,284.43
Projected Per acre Annual Assessment FY 18-19 \$368.03

**LANDSCAPING AND LIGHTING MAINTENANCE DISTRICT NO. 89-1 CONSOLIDATED
FISCAL YEAR 2018-19
ANNUAL BUDGET
STREET LIGHTING ZONE 82**

	Projected Annual Cost	No. of acre(s)	Cost Per acre
Maintenance Improvement			
Streetlights	\$357.00	1.55	\$230.32
Total Maintenance Improvement Costs	\$357.00	Cost Per acre	\$230.32
Incidental			
Administrative Costs	\$204.00	1.55	\$131.61
Contingency	\$0.00	1.55	\$0.00
Maintained Positive Fund Balance	\$331.50	1.55	\$213.87
Total Incidental Costs	\$535.50	Cost Per acre	\$345.48
Total Projected Costs	\$892.50	Cost Per acre	\$575.81

Maximum Annual Assessment FY 18-19 \$878.75
Maximum Per acre Annual Assessment FY 18-19 \$566.93

Projected Annual Assessment FY 18-19 \$878.75
Projected Per acre Annual Assessment FY 18-19 \$566.93

**LANDSCAPING AND LIGHTING MAINTENANCE DISTRICT NO. 89-1 CONSOLIDATED
FISCAL YEAR 2018-19
ANNUAL BUDGET
STREET LIGHTING ZONE 85**

	Projected Annual Cost	No. of acre(s)	Cost Per acre
Maintenance Improvement			
Streetlights	\$459.00	5.58	\$82.26
Total Maintenance Improvement Costs	\$459.00	Cost Per acre	\$82.26

	Projected Annual Cost	No. of acre(s)	Cost Per acre
Incidental			
Administrative Costs	\$153.00	5.58	\$27.42
Contingency	\$0.00	5.58	\$0.00
Maintained Positive Fund Balance	\$306.00	5.58	\$54.84
Total Incidental Costs	\$459.00	Cost Per acre	\$82.26

Total Projected Costs \$918.00 Cost Per acre \$164.52

Maximum Annual Assessment FY 18-19 \$912.61
Maximum Per acre Annual Assessment FY 18-19 \$163.55

Projected Annual Assessment FY 18-19 \$912.61
Projected Per acre Annual Assessment FY 18-19 \$163.55

**LANDSCAPING AND LIGHTING MAINTENANCE DISTRICT NO. 89-1 CONSOLIDATED
FISCAL YEAR 2018-19
ANNUAL BUDGET
STREET LIGHTING ZONE 89**

Maintenance Improvement	Projected Annual Cost	No. of acre(s)	Cost Per acre
Streetlights	\$255.00	15.79	\$16.15
Total Maintenance Improvement Costs	\$255.00	Cost Per acre	\$16.15

Incidental	Projected Annual Cost	No. of acre(s)	Cost Per acre
Administrative Costs	\$102.00	15.79	\$6.46
Contingency	\$0.00	15.79	\$0.00
Maintained Positive Fund Balance	\$127.50	15.79	\$8.07
Total Incidental Costs	\$229.50	Cost Per acre	\$14.53

Total Projected Costs \$484.50 Cost Per acre \$30.68

Maximum Annual Assessment FY 18-19 \$432.22
Maximum Per acre Annual Assessment FY 18-19 \$27.37

Projected Annual Assessment FY 18-19 \$432.22
Projected Per acre Annual Assessment FY 18-19 \$27.37

**LANDSCAPING AND LIGHTING MAINTENANCE DISTRICT NO. 89-1 CONSOLIDATED
FISCAL YEAR 2018-19
ANNUAL BUDGET
STREET LIGHTING ZONE 95**

	Projected Annual Cost	No. of acre(s)	Cost Per acre
Maintenance Improvement			
Streetlights	\$204.00	1.82	\$112.09
Total Maintenance Improvement Costs	\$204.00	Cost Per acre	\$112.09
Incidental			
Administrative Costs	\$102.00	1.82	\$56.04
Contingency	\$0.00	1.82	\$0.00
Maintained Positive Fund Balance	\$153.00	1.82	\$84.07
Total Incidental Costs	\$255.00	Cost Per acre	\$140.11
Total Projected Costs	\$459.00	Cost Per acre	\$252.20

Maximum Annual Assessment FY 18-19 \$447.35
Maximum Per acre Annual Assessment FY 18-19 \$245.79

Projected Annual Assessment FY 18-19 \$447.35
Projected Per acre Annual Assessment FY 18-19 \$245.79

**LANDSCAPING AND LIGHTING MAINTENANCE DISTRICT NO. 89-1 CONSOLIDATED
FISCAL YEAR 2018-19
ANNUAL BUDGET
STREET LIGHTING ZONE 97**

	Projected Annual Cost	No. of acre(s)	Cost Per acre
Maintenance Improvement			
Streetlights	\$306.00	1.79	\$170.95
Total Maintenance Improvement Costs	\$306.00	Cost Per acre	\$170.95
Incidental			
Administrative Costs	\$102.00	1.79	\$56.98
Contingency	\$0.00	1.79	\$0.00
Maintained Positive Fund Balance	\$153.00	1.79	\$85.47
Total Incidental Costs	\$255.00	Cost Per acre	\$142.46
Total Projected Costs	\$561.00	Cost Per acre	\$313.41

Maximum Annual Assessment FY 18-19 \$430.18
Maximum Per acre Annual Assessment FY 18-19 \$240.32

Projected Annual Assessment FY 18-19 \$430.18
Projected Per acre Annual Assessment FY 18-19 \$240.32

**LANDSCAPING AND LIGHTING MAINTENANCE DISTRICT NO. 89-1 CONSOLIDATED
FISCAL YEAR 2018-19
ANNUAL BUDGET
STREET LIGHTING ZONE 99**

	Projected Annual Cost	No. of acre(s)	Cost Per acre
Maintenance Improvement			
Streetlights	\$561.00	10.76	\$52.14
Total Maintenance Improvement Costs	\$561.00	Cost Per acre	\$52.14
Incidental			
Administrative Costs	\$153.00	10.76	\$14.22
Contingency	\$0.00	10.76	\$0.00
Maintained Positive Fund Balance	\$255.00	10.76	\$23.70
Total Incidental Costs	\$408.00	Cost Per acre	\$37.92
Total Projected Costs	\$969.00	Cost Per acre	\$90.06

Maximum Annual Assessment FY 18-19 \$860.09
Maximum Per acre Annual Assessment FY 18-19 \$79.93

Projected Annual Assessment FY 18-19 \$860.09
Projected Per acre Annual Assessment FY 18-19 \$79.93

Street Lighting Zone 99 is not yet maintained. Should that status remain the same prior to submission of fixed charges to the County of Riverside Auditor-Controller's Office, the assessment will not be submitted and therefore not collected.

**LANDSCAPING AND LIGHTING MAINTENANCE DISTRICT NO. 89-1 CONSOLIDATED
FISCAL YEAR 2018-19
ANNUAL BUDGET
STREET LIGHTING ZONE 101**

Maintenance Improvement	Projected Annual Cost	No. of acre(s)	Cost Per acre
Streetlights	\$459.00	0.68	\$675.00
Total Maintenance Improvement Costs	\$459.00	Cost Per acre	\$675.00

Incidental	Projected Annual Cost	No. of acre(s)	Cost Per acre
Administrative Costs	\$204.00	0.68	\$300.00
Contingency	\$0.00	0.68	\$0.00
Maintained Positive Fund Balance	\$229.50	0.68	\$337.50
Total Incidental Costs	\$433.50	Cost Per acre	\$637.50

Total Projected Costs \$892.50 Cost Per acre \$1,312.50

Maximum Annual Assessment FY 18-19 \$774.94
Maximum Per acre Annual Assessment FY 18-19 \$1,139.61

Projected Annual Assessment FY 18-19 \$774.94
Projected Per acre Annual Assessment FY 18-19 \$1,139.61

**LANDSCAPING AND LIGHTING MAINTENANCE DISTRICT NO. 89-1 CONSOLIDATED
FISCAL YEAR 2018-19
ANNUAL BUDGET
STREET LIGHTING ZONE 103**

	Projected Annual Cost	No. of acre(s)	Cost Per acre
Maintenance Improvement			
Streetlights	\$663.00	4.12	\$160.92
Total Maintenance Improvement Costs	\$663.00	Cost Per acre	\$160.92
Incidental			
Administrative Costs	\$357.00	4.12	\$86.65
Contingency	\$0.00	4.12	\$0.00
Maintained Positive Fund Balance	\$765.00	4.12	\$185.68
Total Incidental Costs	\$1,122.00	Cost Per acre	\$272.33
Total Projected Costs	\$1,785.00	Cost Per acre	\$433.25

Maximum Annual Assessment FY 18-19 **\$1,695.25**
Maximum Per acre Annual Assessment FY 18-19 **\$411.47**

Projected Annual Assessment FY 18-19 **\$1,695.25**
Projected Per acre Annual Assessment FY 18-19 **\$411.47**

**LANDSCAPING AND LIGHTING MAINTENANCE DISTRICT NO. 89-1 CONSOLIDATED
FISCAL YEAR 2018-19
ANNUAL BUDGET
STREET LIGHTING ZONE 104**

Maintenance Improvement	Projected Annual Cost	No. of acre(s)	Cost Per acre
Streetlights	\$459.00	13.83	\$33.19
Total Maintenance Improvement Costs	\$459.00	Cost Per acre	\$33.19
Incidental	Projected Annual Cost	No. of acre(s)	Cost Per acre
Administrative Costs	\$204.00	13.83	\$14.75
Contingency	\$0.00	13.83	\$0.00
Maintained Positive Fund Balance	\$204.00	13.83	\$14.75
Total Incidental Costs	\$408.00	Cost Per acre	\$29.50
Total Projected Costs	\$867.00	Cost Per acre	\$62.69

Maximum Annual Assessment FY 18-19 \$843.18
Maximum Per acre Annual Assessment FY 18-19 \$60.97

Projected Annual Assessment FY 18-19 \$843.18
Projected Per acre Annual Assessment FY 18-19 \$60.97

Street Lighting Zone 104 is not yet maintained. Should that status remain the same prior to submission of fixed charges to the County of Riverside Auditor-Controller's Office, the assessment will not be submitted and therefore not collected.

**LANDSCAPING AND LIGHTING MAINTENANCE DISTRICT NO. 89-1 CONSOLIDATED
FISCAL YEAR 2018-19
ANNUAL BUDGET
STREET LIGHTING ZONE 107**

	Projected Annual Cost	No. of parcel(s)	Cost Per parcel
Maintenance Improvement			
Streetlights	\$612.00	19.00	\$32.21
Total Maintenance Improvement Costs	\$612.00	Cost Per parcel	\$32.21
Incidental			
Administrative Costs	\$255.00	19.00	\$13.42
Contingency	\$0.00	19.00	\$0.00
Maintained Positive Fund Balance	\$306.00	19.00	\$16.11
Total Incidental Costs	\$561.00	Cost Per parcel	\$29.53
Total Projected Costs	\$1,173.00	Cost Per parcel	\$61.74

Maximum Annual Assessment FY 18-19 \$1,142.17
Maximum Per parcel Annual Assessment FY 18-19 \$60.11

Projected Annual Assessment FY 18-19 \$1,142.17
Projected Per parcel Annual Assessment FY 18-19 \$60.11

Street Lighting Zone 107 is not yet maintained. Should that status remain the same prior to submission of fixed charges to the County of Riverside Auditor-Controller's Office, the assessment will not be submitted and therefore not collected.

**LANDSCAPING AND LIGHTING MAINTENANCE DISTRICT NO. 89-1 CONSOLIDATED
FISCAL YEAR 2018-19
ANNUAL BUDGET
STREET LIGHTING ZONE 108**

Maintenance Improvement	Projected Annual Cost	No. of parcel(s)	Cost Per parcel
Streetlights	\$147.90	1.00	\$147.90
Total Maintenance Improvement Costs	\$147.90	Cost Per parcel	\$147.90

Incidental	Projected Annual Cost	No. of parcel(s)	Cost Per parcel
Administrative Costs	\$76.50	1.00	\$76.50
Contingency	\$0.00	1.00	\$0.00
Maintained Positive Fund Balance	\$0.00	1.00	\$0.00
Total Incidental Costs	\$76.50	Cost Per parcel	\$76.50

Total Projected Costs \$224.40 Cost Per parcel \$224.40

Maximum Annual Assessment FY 18-19 \$213.30
Maximum Per parcel Annual Assessment FY 18-19 \$213.30

Projected Annual Assessment FY 18-19 \$213.30
Projected Per parcel Annual Assessment FY 18-19 \$213.30

**LANDSCAPING AND LIGHTING MAINTENANCE DISTRICT NO. 89-1 CONSOLIDATED
FISCAL YEAR 2018-19
ANNUAL BUDGET
STREET LIGHTING ZONE 109**

	Projected Annual Cost	No. of parcel(s)	Cost Per parcel
Maintenance Improvement			
Streetlights	\$408.00	1.00	\$408.00
Total Maintenance Improvement Costs	\$408.00	Cost Per parcel	\$408.00
Incidental			
Administrative Costs	\$51.00	1.00	\$51.00
Contingency	\$0.00	1.00	\$0.00
Maintained Positive Fund Balance	\$0.00	1.00	\$0.00
Total Incidental Costs	\$51.00	Cost Per parcel	\$51.00
Total Projected Costs	\$459.00	Cost Per parcel	\$459.00

Maximum Annual Assessment FY 18-19 \$418.25
Maximum Per parcel Annual Assessment FY 18-19 \$418.25

Projected Annual Assessment FY 18-19 \$418.25
Projected Per parcel Annual Assessment FY 18-19 \$418.25

**LANDSCAPING AND LIGHTING MAINTENANCE DISTRICT NO. 89-1 CONSOLIDATED
FISCAL YEAR 2018-19
ANNUAL BUDGET
STREET LIGHTING ZONE 110**

	Projected Annual Cost	No. of parcel(s)	Cost Per parcel
Maintenance Improvement			
Streetlights	\$816.00	1.00	\$816.00
Total Maintenance Improvement Costs	\$816.00	Cost Per parcel	\$816.00
Incidental			
Administrative Costs	\$51.00	1.00	\$51.00
Contingency	\$0.00	1.00	\$0.00
Maintained Positive Fund Balance	\$408.00	1.00	\$408.00
Total Incidental Costs	\$459.00	Cost Per parcel	\$459.00
Total Projected Costs	\$1,275.00	Cost Per parcel	\$1,275.00

Maximum Annual Assessment FY 18-19 \$891.41
Maximum Per parcel Annual Assessment FY 18-19 \$891.41

Projected Annual Assessment FY 18-19 \$891.41
Projected Per parcel Annual Assessment FY 18-19 \$891.41

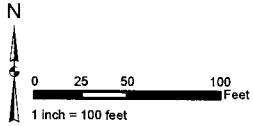
Street Lighting Zone 110 is not yet maintained. Should that status remain the same prior to submission of fixed charges to the County of Riverside Auditor-Controller's Office, the assessment will not be submitted and therefore not collected.

APPENDIX B – ASSESSMENT DIAGRAMS

Appendix B – Assessment Diagrams

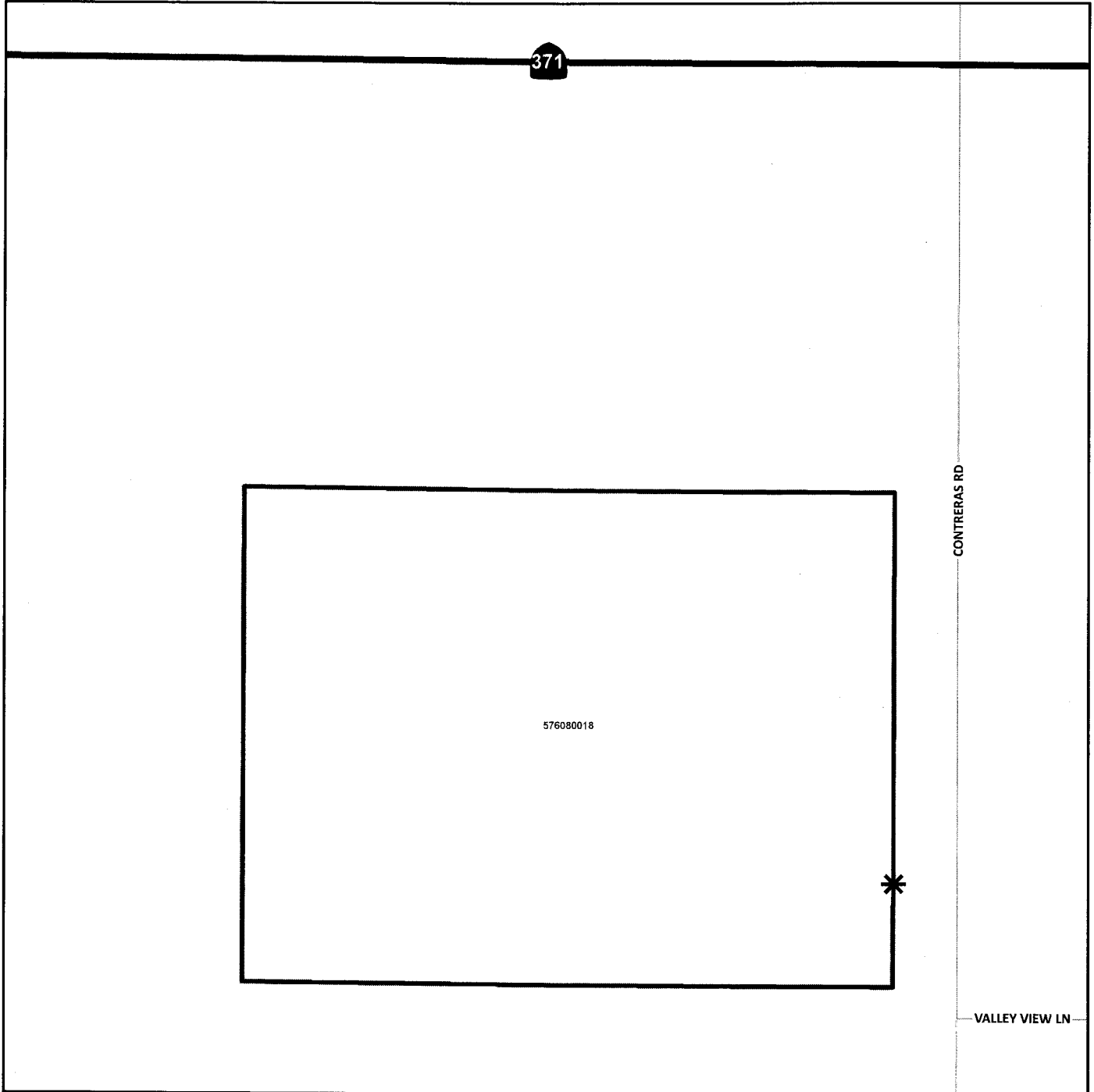
(begin on the following page)

LANDSCAPING AND LIGHTING MAINTENANCE DISTRICT NO. 89-1 CONSOLIDATED
STREET LIGHT ZONE 2
PORTION(S) OF SECTION 8, T.5S., R.7E.
PLOT PLAN NO. 16949
1 PARCEL



The County of Riverside assumes no warranty or legal responsibility for the information contained on this map. Data and information represented on this map is subject to updates, modifications and may not be complete or appropriate for all purposes. County GIS and other sources should be queried for the most current information. Do not copy or resell this map. Printed by bhahn on 4/1/17

ASSESSMENT DIAGRAM

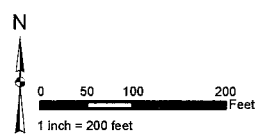


- * DENOTES MAINTAINED ROW STREETLIGHT
- DENOTES ZONE BOUNDARY

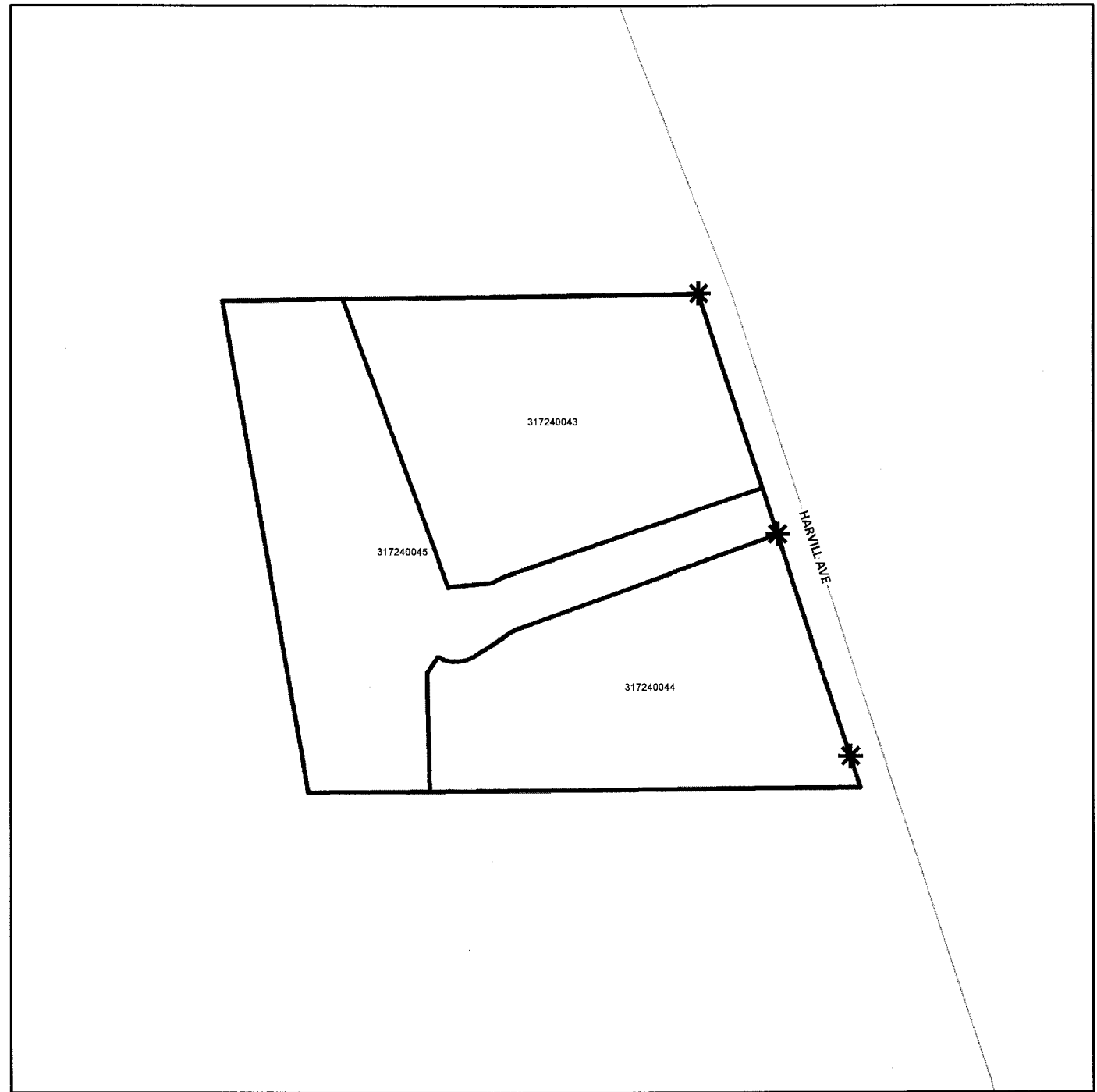
LANDSCAPING AND LIGHTING MAINTENANCE DISTRICT NO. 89-1 CONSOLIDATED
STREET LIGHT ZONE 3
PORTION(S) OF SECTION 13, T.4S., R.4W.
PARCEL MAP NO. 30133 AND PLOT PLAN NO. 16978
3 PARCELS



The County of Riverside assumes no warranty or legal responsibility for the information contained on this map. Data and information represented on this map is subject to updates, modifications and may not be complete or appropriate for all purposes. County GIS and other sources should be queried for the most current information. Do not copy or resell this map. Printed by bhahn on 4/1/17

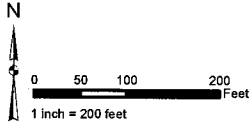


ASSESSMENT DIAGRAM



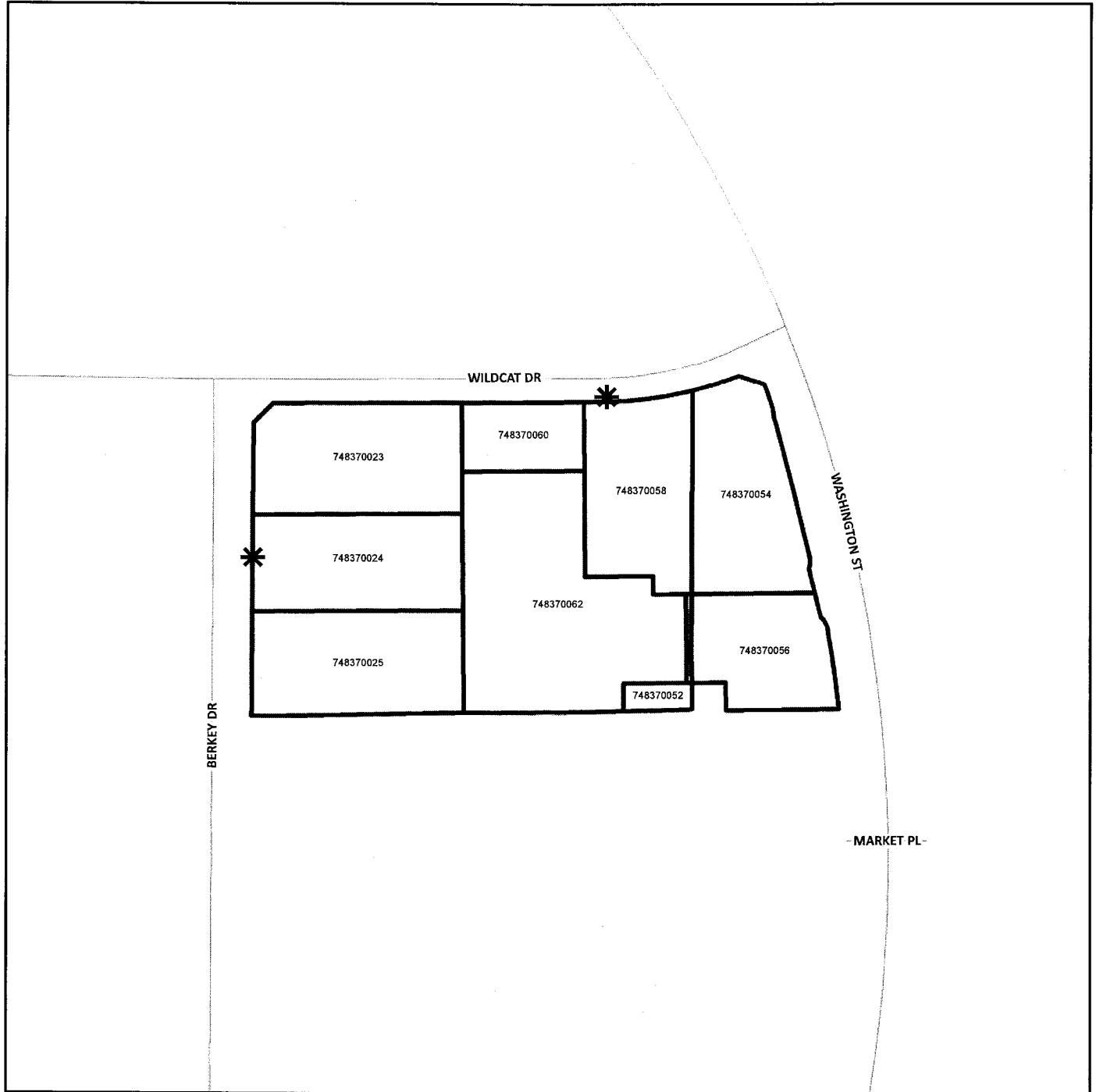
* DENOTES MAINTAINED ROW STREETLIGHT
□ DENOTES ZONE BOUNDARY

LANDSCAPING AND LIGHTING MAINTENANCE DISTRICT NO. 89-1 CONSOLIDATED
STREET LIGHT ZONE 4
 PORTION(S) OF SECTION 6, T.5S., R.7E.
 PLOT PLAN NO. 17611
 10 PARCELS



The County of Riverside assumes no warranty or legal responsibility for the information contained on this map. Data and information represented on this map is subject to updates, modifications and may not be complete or appropriate for all purposes. County GIS and other sources should be queried for the most current information. Do not copy or resell this map. Printed by bhahn on 4/1/17

ASSESSMENT DIAGRAM

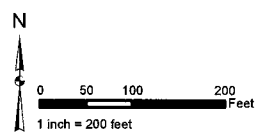


- * DENOTES MAINTAINED ROW STREETLIGHT
- DENOTES ZONE BOUNDARY

LANDSCAPING AND LIGHTING MAINTENANCE DISTRICT NO. 89-1 CONSOLIDATED
STREET LIGHT ZONE 9
 PORTION(S) OF SECTION 24, T.7S., R.3W.
 CONDITIONAL USE PERMIT NO. 03323
 16 PARCELS



The County of Riverside assumes no warranty or legal responsibility for the information contained on this map. Data and information represented on this map is subject to updates, modifications and may not be complete or appropriate for all purposes. County GIS and other sources should be queried for the most current information. Do not copy or resell this map. Printed by bhahn on 4/1/17



ASSESSMENT DIAGRAM

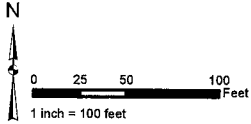


- * DENOTES MAINTAINED ROW STREETLIGHT
- DENOTES ZONE BOUNDARY

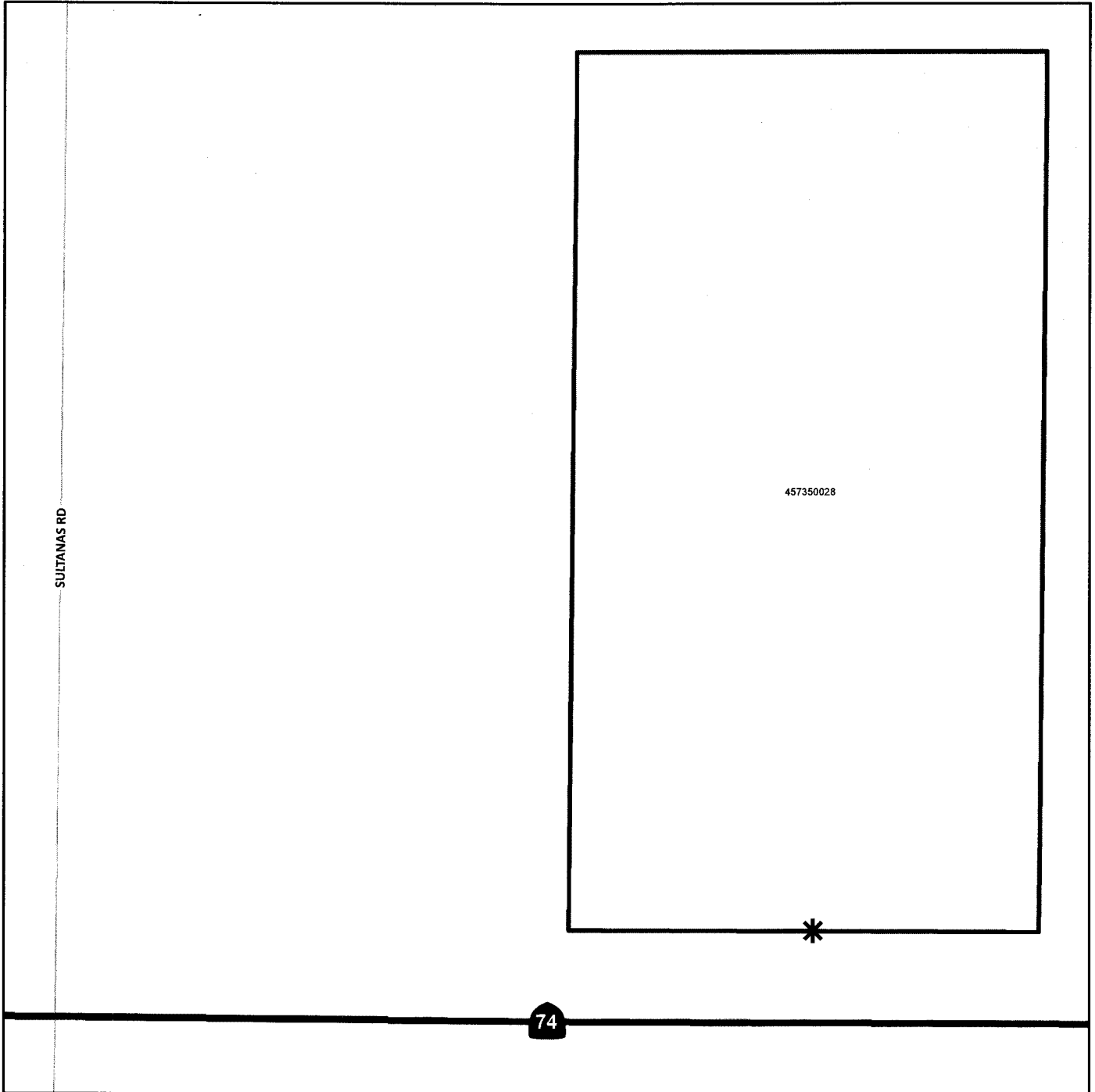
LANDSCAPING AND LIGHTING MAINTENANCE DISTRICT NO. 89-1 CONSOLIDATED
STREET LIGHT ZONE 11
PORTION(S) OF SECTION 7, T.5S., R.2W.
PLOT PLAN NO. 16103
1 PARCEL



The County of Riverside assumes no warranty or legal responsibility for the information contained on this map. Data and information represented on this map is subject to updates, modifications and may not be complete or appropriate for all purposes. County GIS and other sources should be queried for the most current information. Do not copy or resell this map. Printed by bhahn on 4/1/17



ASSESSMENT DIAGRAM

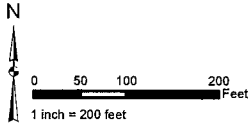


- * DENOTES MAINTAINED ROW STREETLIGHT
- DENOTES ZONE BOUNDARY

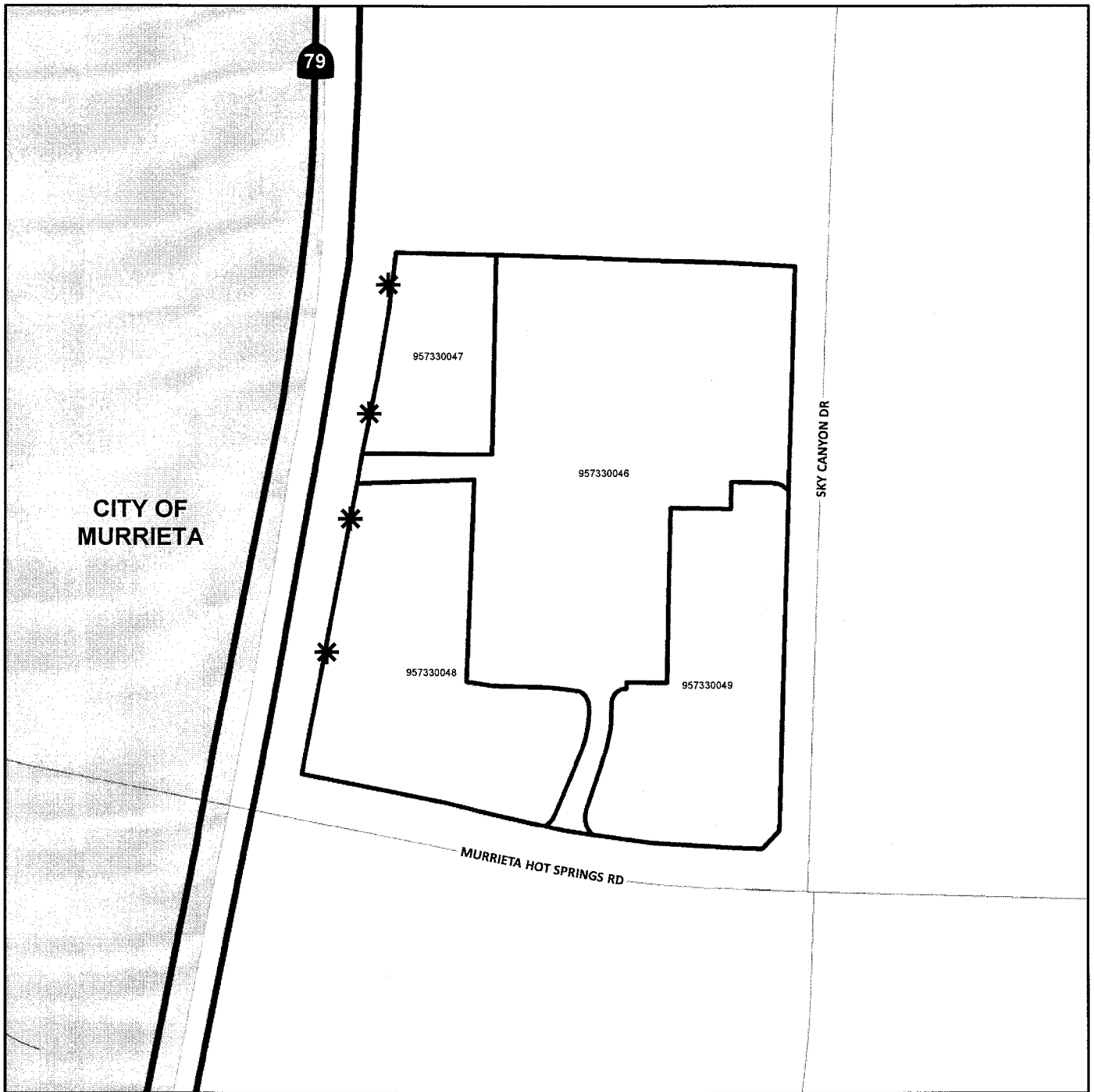
LANDSCAPING AND LIGHTING MAINTENANCE DISTRICT NO. 89-1 CONSOLIDATED
STREET LIGHT ZONE 12
 PORTION(S) OF SECTION 24, T.7S., R.3W.
 PLOT PLAN NO. 17984
 4 PARCELS



The County of Riverside assumes no warranty or legal responsibility for the information contained on this map. Data and information represented on this map is subject to updates, modifications and may not be complete or appropriate for all purposes. County GIS and other sources should be queried for the most current information. Do not copy or resell this map. Printed by bhahn on 4/1/17



ASSESSMENT DIAGRAM

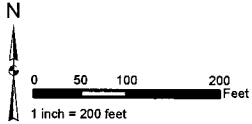


- * DENOTES MAINTAINED ROW STREETLIGHT
- DENOTES ZONE BOUNDARY

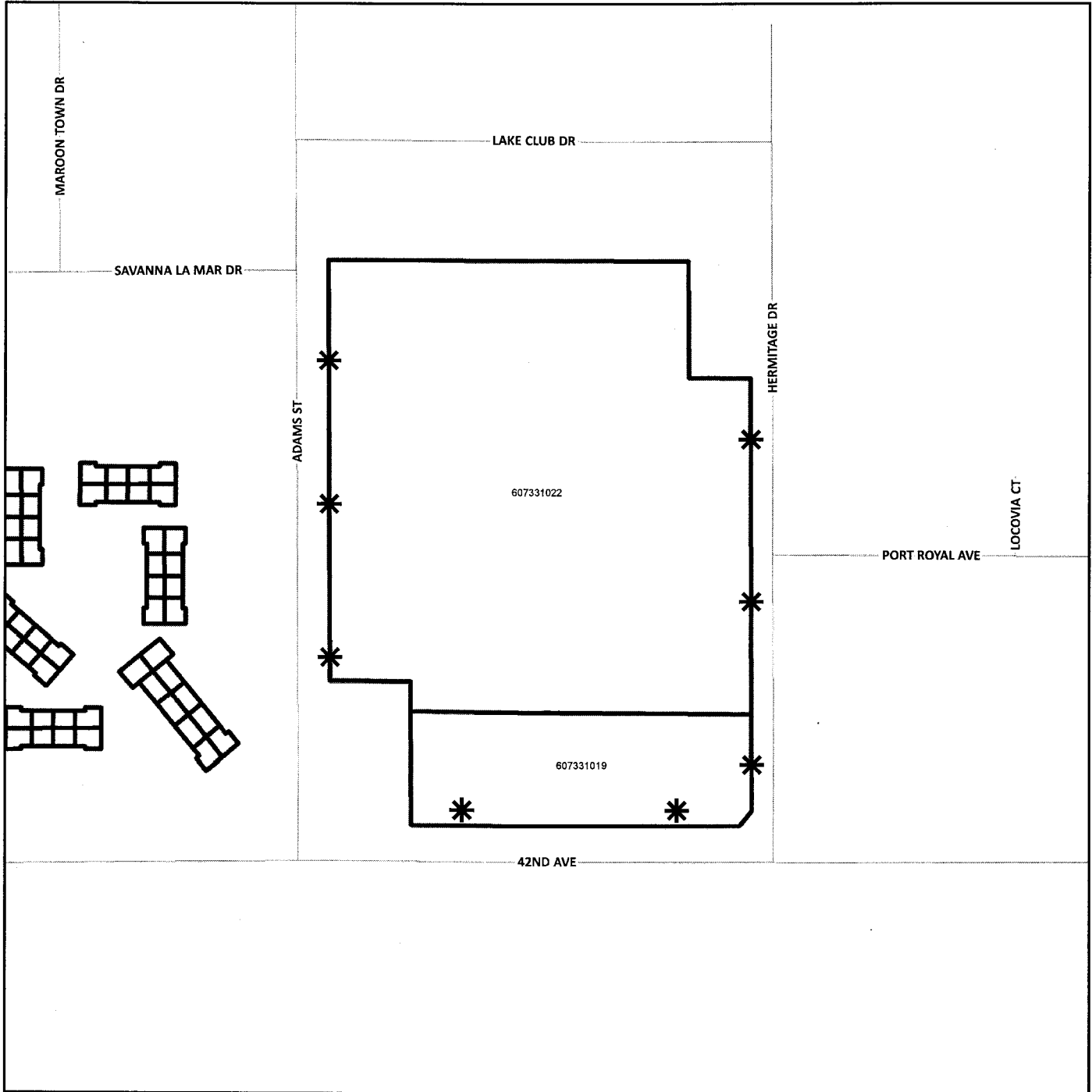
LANDSCAPING AND LIGHTING MAINTENANCE DISTRICT NO. 89-1 CONSOLIDATED
STREET LIGHT ZONE 13
 PORTION(S) OF SECTION 8, T.5S., R.7E.
 PLOT PLAN NO. 17266
 2 PARCELS



The County of Riverside assumes no warranty or legal responsibility for the information contained on this map. Data and information represented on this map is subject to updates, modifications and may not be complete or appropriate for all purposes. County GIS and other sources should be queried for the most current information. Do not copy or resell this map. Printed by bhahn on 4/1/17



ASSESSMENT DIAGRAM

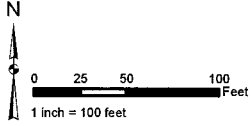


- * DENOTES MAINTAINED ROW STREETLIGHT
- ▭ DENOTES ZONE BOUNDARY

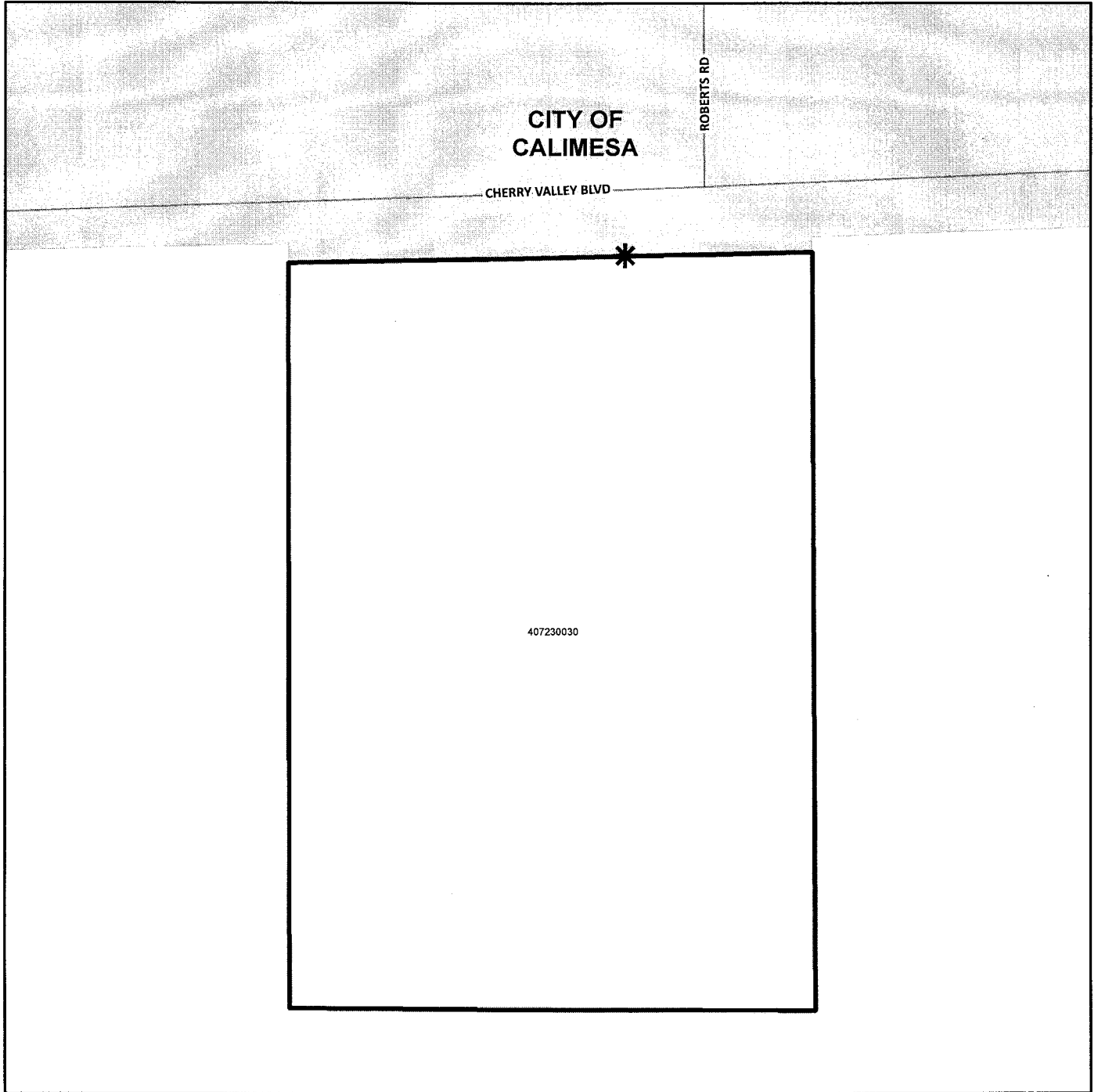
LANDSCAPING AND LIGHTING MAINTENANCE DISTRICT NO. 89-1 CONSOLIDATED
STREET LIGHT ZONE 14
PORTION(S) OF SECTION 30, T.2S., R.4W.
CONDITIONAL USE PERMIT NO. 03322
1 PARCEL



The County of Riverside assumes no warranty or legal responsibility for the information contained on this map. Data and information represented on this map is subject to updates, modifications and may not be complete or appropriate for all purposes. County GIS and other sources should be queried for the most current information. Do not copy or resell this map. Printed by bhahn on 4/1/17



ASSESSMENT DIAGRAM



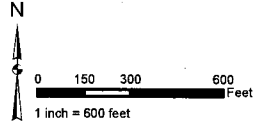
* DENOTES MAINTAINED ROW STREETLIGHT

□ DENOTES ZONE BOUNDARY

LANDSCAPING AND LIGHTING MAINTENANCE DISTRICT NO. 89-1 CONSOLIDATED

STREET LIGHT ZONE 16

PORTION(S) OF SECTION 27, T.4S., R.6W.
 PARCEL MAP NO. 28834, 28834-1 AND 28834-2
 31 PARCELS



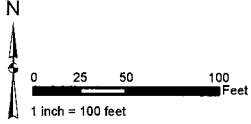
The County of Riverside assumes no warranty or legal responsibility for the information contained on this map. Data and information represented on this map is subject to updates, modifications and may not be complete or appropriate for all purposes. County GIS and other sources should be queried for the most current information. Do not copy or resell this map. Printed by bhahn on 4/1/17

ASSESSMENT DIAGRAM



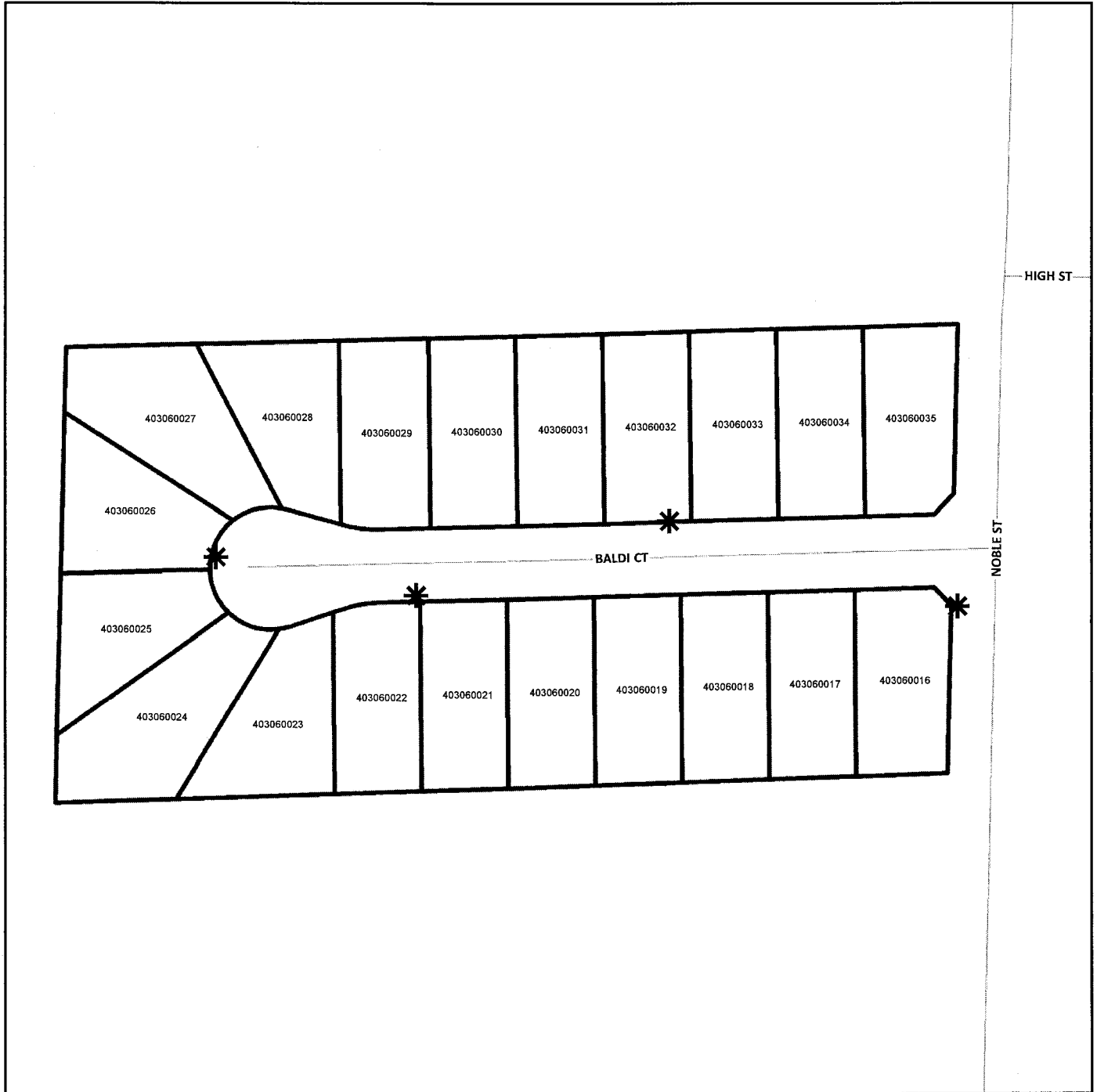
- * DENOTES MAINTAINED ROW STREETLIGHT
- ▭ DENOTES ZONE BOUNDARY

LANDSCAPING AND LIGHTING MAINTENANCE DISTRICT NO. 89-1 CONSOLIDATED
STREET LIGHT ZONE 20
 PORTION(S) OF SECTION 27, T.2S., R.1W.
 TRACT MAP NO. 04454
 20 PARCELS



The County of Riverside assumes no warranty or legal responsibility for the information contained on this map. Data and information represented on this map is subject to updates, modifications and may not be complete or appropriate for all purposes. County GIS and other sources should be queried for the most current information. Do not copy or resell this map. Printed by bhahn on 4/1/17

ASSESSMENT DIAGRAM



* DENOTES MAINTAINED ROW STREETLIGHT
 □ DENOTES ZONE BOUNDARY

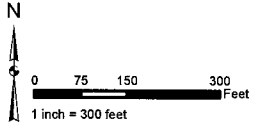
LANDSCAPING AND LIGHTING MAINTENANCE DISTRICT NO. 89-1 CONSOLIDATED

STREET LIGHT ZONE 21

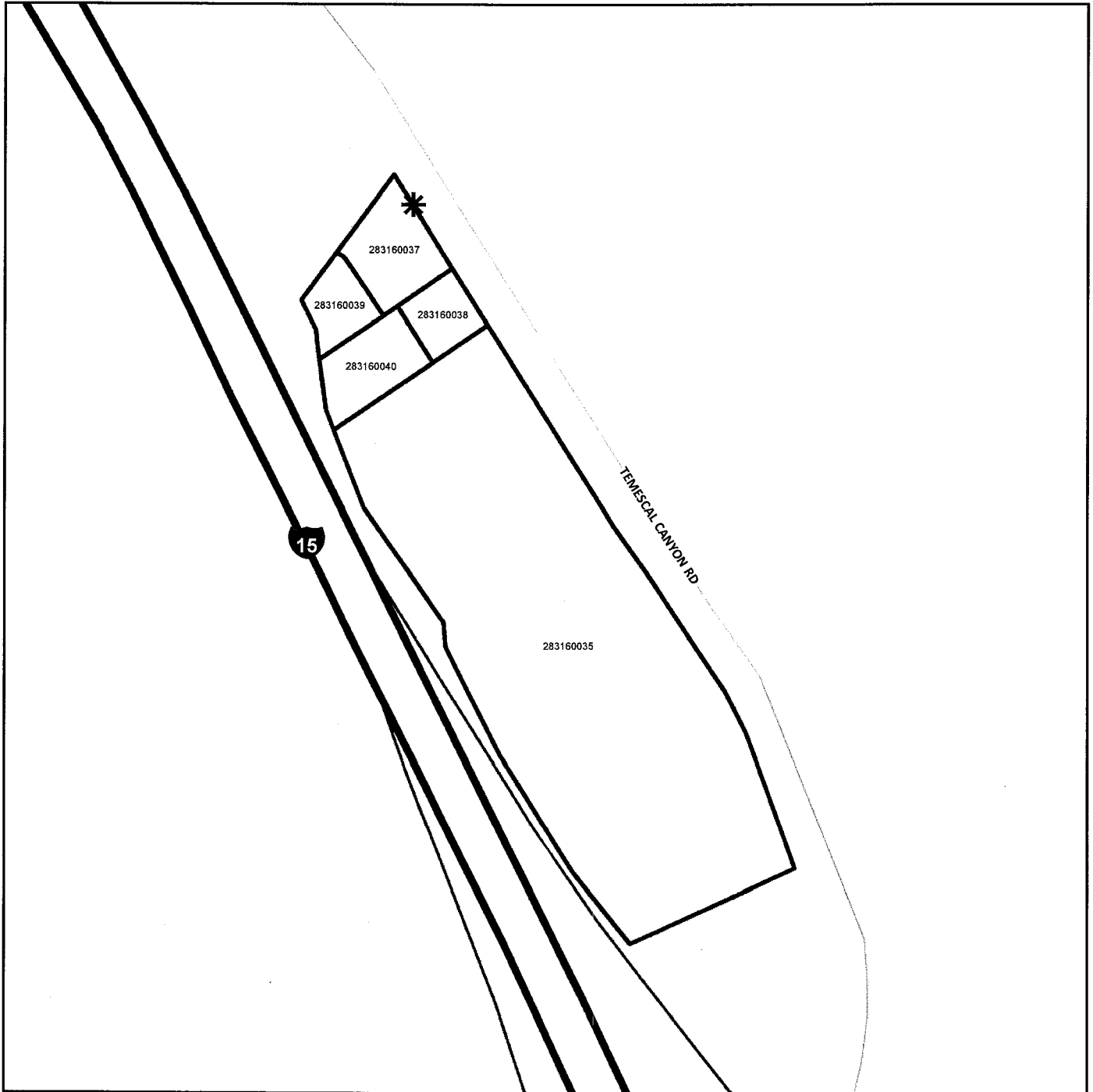
PORTION(S) OF SECTION 34, T.4S., R.6W.
PARCEL MAP NO. 31196 AND PLOT PLAN NO. 18511
5 PARCELS



The County of Riverside assumes no warranty or legal responsibility for the information contained on this map. Data and information represented on this map is subject to updates, modifications and may not be complete or appropriate for all purposes. County GIS and other sources should be queried for the most current information. Do not copy or resell this map. Printed by bhahn on 4/1/17



ASSESSMENT DIAGRAM



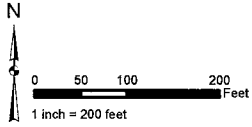
* DENOTES MAINTAINED ROW STREETLIGHT

□ DENOTES ZONE BOUNDARY

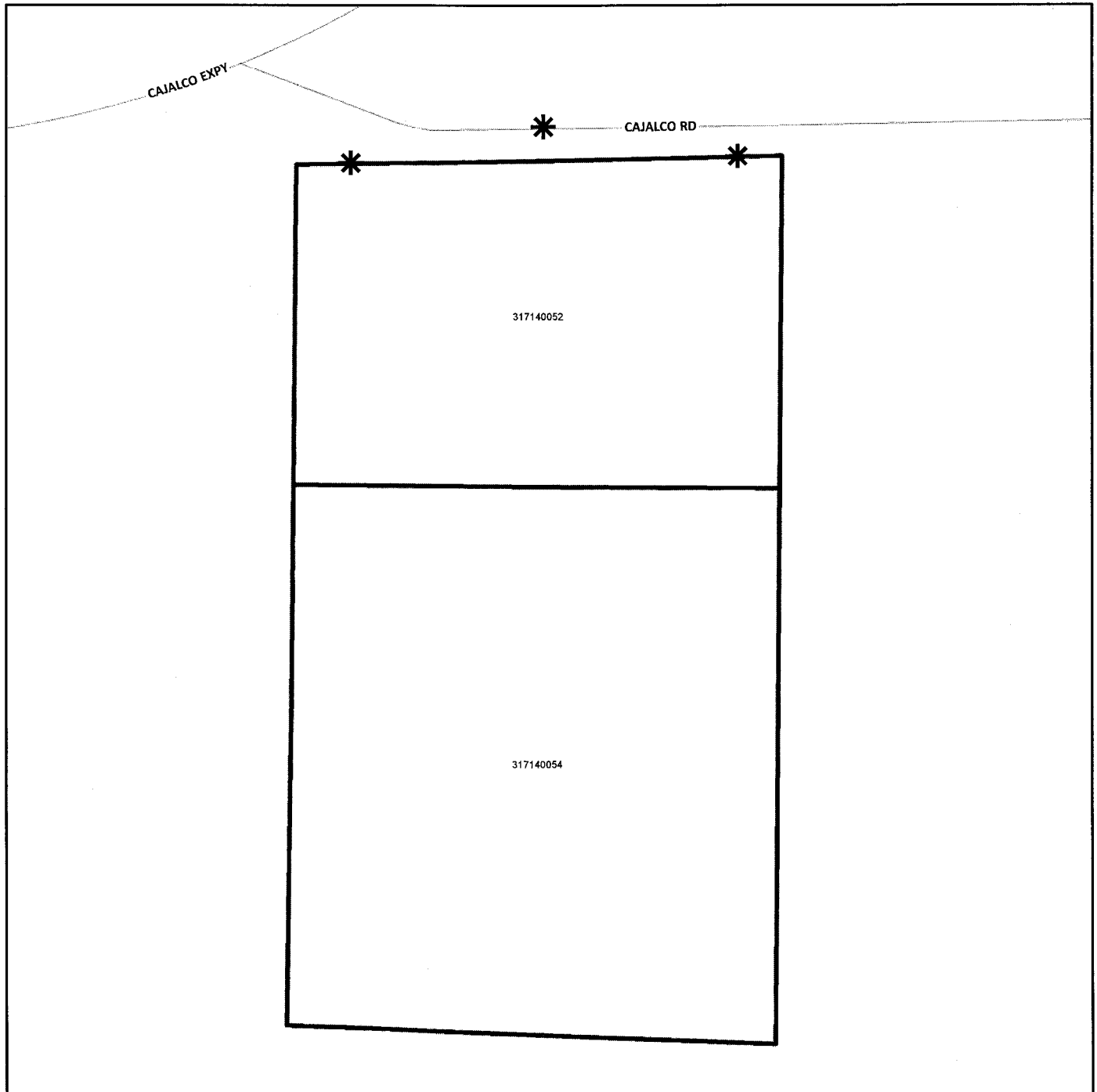
LANDSCAPING AND LIGHTING MAINTENANCE DISTRICT NO. 89-1 CONSOLIDATED
STREET LIGHT ZONE 22
PORTION(S) OF SECTION 12, T.4S., R.4W.
PLOT PLAN NO. 18961
2 PARCELS



The County of Riverside assumes no warranty or legal responsibility for the information contained on this map. Data and information represented on this map is subject to updates, modifications and may not be complete or appropriate for all purposes. County GIS and other sources should be queried for the most current information. Do not copy or resell this map. Printed by bhahn on 4/1/17



ASSESSMENT DIAGRAM



* DENOTES MAINTAINED ROW STREETLIGHT
[Thick black line] DENOTES ZONE BOUNDARY