

MINUTES OF THE BOARD OF SUPERVISORS
COUNTY OF RIVERSIDE, STATE OF CALIFORNIA



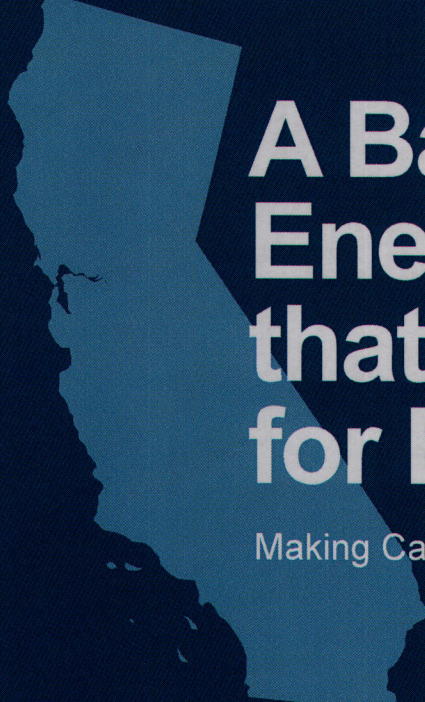
PUBLIC COMMENT:

15.3

During the oral communication section of the agenda for Tuesday, December 11, 2018, Lea Peterson spoke regarding a balanced energy approach from Southern California Gas Company.

**ATTACHMENTS FILED WITH
CLERK OF THE BOARD**

**AGENDA NO.
15.3**



A Balanced Energy Approach that Can Work for Everyone

Making California's future **renewable**

Meeting Name | Date

Electrification sounds like a simple solution, but **the challenges are big and complex**

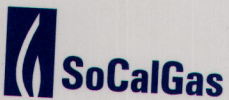
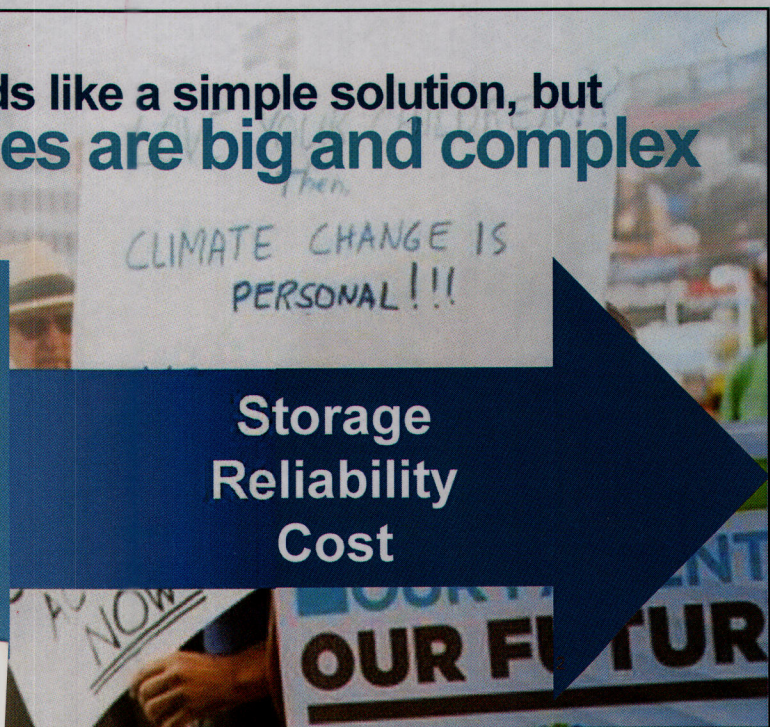
Governing Law – SB32

By 2030, reduce GHG emissions

40%

below 1990 levels

Storage Reliability Cost



Sempra Energy utility

Lea Petersen
Public Affairs Manager
Regional Public Affairs - South Inland

7000 Indiana Ave., Suite 105, SC8002, Riverside, CA 92506
Tel: 909.335.7631 Cell: 909.731.1692
lpetersen@semprautilities.com

Submitted by *Lea Petersen*
12-11-18 (date) Item *public comment*

Consumers

want choice

<10%

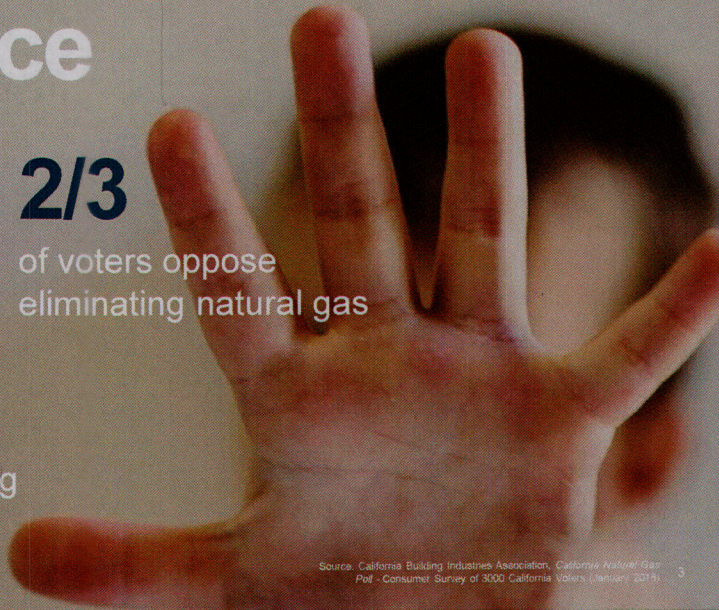
of voters would choose
an all-electric home

2/3

of voters oppose
eliminating natural gas

80%

of voters oppose prohibiting
the use of gas appliances



Source: California Building Industries Association, California Natural Gas
Poll - Consumer Survey of 3000 California Voters (February 2018)

Electrification

will further burden people

Costing the typical

California family:

\$7,200

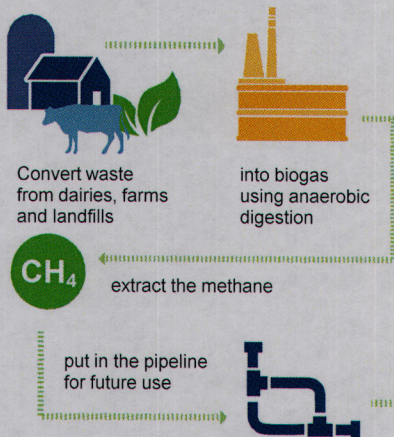
to retrofit
your home

\$388/yr

more in
energy bills

Source: Navigant Consulting, "The Cost of Residential Appliance
Electrification: Phase 1 Report - Existing Single-Family Homes", April 2018

Renewable Natural Gas will help us reach our goals



Navigant Consulting, "Gas Strategies for a Low-Carbon California Future," 2016



Meet the same GHG reductions as the current plan to electrify 30% of homes and buildings with

5% RNG



Achieve the same GHG reductions as overhauling 100% of CA's buildings to all electricity with

16% RNG



Using RNG

3x or more

cost effective than ANY electrification scenario

5

The point

You shouldn't have to choose between doing what's right for the environment and what your family can afford.

And with a balanced energy approach, you don't have to.

6

Here's what you can do



Pay attention
to the issue
and learn more



Use SoCalGas
Public Affairs
team as a
resource



Consider the
full and real
implications to
your community
members



Stand up for
local control –
don't let the
state mandate
building codes

**Riverside County Board of Supervisors
Request to Speak**



Submit request to Clerk of Board (right of podium),
Speakers are entitled to three (3) minutes, subject
Board Rules listed on the reverse side of this form.

SPEAKER'S NAME: Lea Petersen

Address: 7000 Indiana, Riverside,
(only if follow-up mail response requested)

Southern California Co 92501
City: _____ **Zip:** _____

Phone #: 909-335-7631

Date: 12/11/2018 **Agenda #** Public Comment

PLEASE STATE YOUR POSITION BELOW:

Position on "Regular" (non-appealed) Agenda Item:

 Support **Oppose** **Neutral**

Note: If you are here for an agenda item that is filed
for "Appeal", please state separately your position on
the appeal below:

 Support **Oppose** **Neutral**

I give my 3 minutes to: _____

BOARD RULES

Requests to Address Board on "Agenda" Items:

You may request to be heard on a published agenda item. Requests to be heard must be submitted to the Clerk of the Board before the scheduled meeting time.

Requests to Address Board on items that are "NOT" on the Agenda:

Notwithstanding any other provisions of these rules, member of the public shall have the right to address the Board during the mid-morning "Oral Communications" segment of the published agenda. Said purpose for address must pertain to issues which are under the direct jurisdiction of the Board of Supervisors. YOUR TIME WILL BE LIMITED TO THREE (3) MINUTES.

Power Point Presentations/Printed Material:

Speakers who intend to conduct a formalized Power Point presentation or provide printed material must notify the Clerk of the Board's Office by 12 noon on the Monday preceding the Tuesday Board meeting, insuring that the Clerk's Office has sufficient copies of all printed materials and at least one (1) copy of the Power Point CD. Copies of printed material given to the Clerk (by Monday noon deadline) will be provided to each Supervisor. If you have the need to use the overhead "Elmo" projector at the Board meeting, please insure your material is clear and with proper contrast, notifying the Clerk well ahead of the meeting, of your intent to use the Elmo.

Individual Speaker Limits:

Individual speakers are limited to a maximum of three (3) minutes. Please step up to the podium when the Chairman calls your name and begin speaking immediately. Pull the microphone to your mouth so that the Board, audience, and audio recording system hear you clearly. Once you start speaking, the "green" podium light will light. The "yellow" light will come on when you have one (1) minute remaining. When you have 30 seconds remaining, the "yellow" light will begin flash, indicating you must quickly wrap up your comments. Your time is up when the "red" light flashes. The Chairman adheres to a strict three (3) minutes per speaker. **Note: If you intend to give your time to a "Group/Organized Presentation", please state so clearly at the very bottom of the reverse side of this form.**

Group/Organized Presentations:

Group/organized presentations with more than one (1) speaker will be limited to nine (9) minutes at the Chairman's discretion. The organizer of the presentation will automatically receive the first three (3) minutes, with the remaining six (6) minutes relinquished by other speakers, as requested by them on a completed "Request to Speak" form, and clearly indicated at the front bottom of the form.

Addressing the Board & Acknowledgement by Chairman:

The Chairman will determine what order the speakers will address the Board, and will call on all speakers in pairs. The first speaker should immediately step to the podium and begin addressing the Board. The second speaker should take up a position in one of the chamber aisles in order to quickly step up to the podium after the preceding speaker. This is to afford an efficient and timely Board meeting, giving all attendees the opportunity to make their case. Speakers are prohibited from making personal attacks, and/or using coarse, crude, profane or vulgar language while speaking to the Board members, staff, the general public and/or meeting participants. Such behavior, at the discretion of the Board Chairman may result in removal from the Board Chambers by Sheriff Deputies.