

**SUBMITTAL TO THE BOARD OF SUPERVISORS  
COUNTY OF RIVERSIDE, STATE OF CALIFORNIA**



ITEM: 12.1  
(ID # 12470)

**MEETING DATE:**  
Tuesday, May 19, 2020

**FROM:** DEPARTMENT OF WASTE RESOURCES:

**SUBJECT:** DEPARTMENT OF WASTE RESOURCES: Public Hearing for Adoption of Ordinance No. 779.21, Amending Ordinance 779, Relating to County Solid Waste Facilities and Establishing Fees, All Districts. [\$0 Waste Resources Enterprise Funds] (CEQA Exempt)

**RECOMMENDED MOTION:** That the Board of Supervisors:

1. Find that the Project is exempt from the California Environmental Quality Act (CEQA) pursuant to State CEQA Guidelines Section 15273 (Rates, Tolls, Fares, and Charges), and Section 15061(b)(3) (General Rules for Exemption);
2. Adopt Ordinance No. 779.21 at the close of the public hearing on May 19, 2020, with changes to the appendices to be effective July 1, 2020;
3. Direct the Clerk of the Board to publish Ordinance No. 779.21 pursuant to Government Code Section 25124 within fifteen days of adoption by the Board; and
4. Direct the Department of Waste Resources (Department) to post the Notice of Exemption (NOE) upon approval of the Project, in accordance with Executive Order N-54-20, issued by Governor Newsom on April 22, 2020.

**ACTION:** Policy

Hans Keinkamp, General Manager - Chief Engineer 4/30/2020

---

**MINUTES OF THE BOARD OF SUPERVISORS**

On motion of Supervisor Washington, seconded by Supervisor Spiegel and duly carried, IT WAS ORDERED that the above matter is approved as recommended and Ordinance No. 779.21 is adopted as recommended.

Ayes: Spiegel, Washington, Perez and Hewitt  
Nays: Jeffries  
Absent: None  
Date: May 19, 2020  
xc: Waste

Kecia R. Harper  
Clerk of the Board  
By:   
Deputy

**SUBMITTAL TO THE BOARD OF SUPERVISORS COUNTY OF RIVERSIDE,  
STATE OF CALIFORNIA**

<b>FINANCIAL DATA</b>	<b>Current Fiscal Year:</b>	<b>Next Fiscal Year:</b>	<b>Total Cost:</b>	<b>Ongoing Cost</b>
<b>COST</b>	\$ 0	\$ 0	\$ 0	\$ 0
<b>NET COUNTY COST</b>	\$ 0	\$ 0	\$ 0	\$ 0
<b>SOURCE OF FUNDS: N/A</b>			<b>Budget Adjustment:</b>	No
			<b>For Fiscal Year:</b>	20/21

**C.E.O. RECOMMENDATION:** Approve

**BACKGROUND:** On April 21, 2020, the Department introduced Ordinance No. 779.21 amending Ordinance 779. After a public posting period, the Department now seeks approval for the proposed amendment. In addition to establishing fees and penalties, Ordinance No. 779 includes the basis for operating regulations that include waste inspection, salvaging and safety. In order to verify that the current refuse rates are appropriate to offset expenses, the Department prudently reviews its operations annually and forecasts capital improvements, expansion projects, and future expenses and liabilities with a projection of 20 years. Since revenue from in-county tonnage delivered to the landfills represents the majority of the Enterprise Fund's total revenue, it is important to accurately project future tonnage growth or decline. In the last seven years, tonnage has increased slightly by an average of 3.7% annually. Based on tonnage totals through the first six months of FY 19/20, the Department projects that tonnage totals will stabilize or slightly decrease due to stricter regulatory compliance requirements focused on increased landfill diversion. The Department proposes to increase landfill disposal fees by the percentage change in Consumer Price Index (CPI) for the new Riverside-San Bernardino-Ontario index for the 12 month period ending January 2020, which is calculated to be 3.03%.

Additionally, in order to lessen the amount of blown litter and debris from vehicles traveling to the landfills, the Department proposes to increase the existing fee for uncovered loads from \$10.00 to \$25.00 per load for all scaled sites (Lamb Canyon, Badlands, El Sobrante, and Blythe). Pursuant to California Vehicle Code 23115, all vehicles transporting garbage shall be covered in a manner to prevent the load from spilling or falling from the vehicle. Over the past year, the Department has assessed 3,527 customers with uncovered load fees and it is suspected that the low fee is not sufficient to deter landfill users from transporting waste to the landfill uncovered. Therefore, the Department proposes to increase the uncovered load fee to further incentivize landfill customers to cover waste loads. The Department will consider future increases should the proposed rates not result in anticipated compliance. For comparison, San Bernardino County doubles the disposal fee for uncovered loads.

The Department continues to pilot the operation of a Materials Reuse Store at the Lamb Canyon Landfill. The program will divert recyclable waste streams for reuse. Until full program costs are defined, the Department proposes to charge fees consistent with the value of these commodities. Proposed rates are based on commodity pricing received by the Department in CY2018, plus a \$6.25 per item surcharge for staff time involved in sorting, inspecting and

**SUBMITTAL TO THE BOARD OF SUPERVISORS COUNTY OF RIVERSIDE,  
STATE OF CALIFORNIA**

storing material for sale. The Department will continue to pilot the operation of a Materials Reuse program to identify additional program costs.

In FY 17/18, the Department began to gradually increase the rate for processed green waste used as Alternative Daily Cover (ADC) to equal the disposal rate between then and FY 20/21. In the 1990's after passage of AB 939, the Department began using processed green waste as ADC which allowed for jurisdictions to report this tonnage as diverted waste. This practice also helped to extend the life of landfills because the landfill space that would have otherwise been consumed by clean fill dirt was now occupied by the processed green waste that was previously part of the landfilled waste stream. The Department offered discounted fees to create incentives for landfill users to deliver processed green waste that could be used as ADC. At that time, the Department accepted processed green waste for the purpose of ADC at no charge. In 2009, at the urging of private composting operators, the Department began charging \$10.00/ton for this material in an effort to direct this material to private composting facilities. To reduce the amount of organics being landfilled, the State passed into law AB 1826, requiring businesses to begin diverting organics. The State also passed into law AB 1594, which will preclude jurisdictions from counting green waste used as ADC as diverted tonnage when calculating their AB 939 per capita diversion amount. Assembly Bill 1594 eliminated the diversion benefit in 2020 and ADC placed in the landfill will now be counted as disposal. Currently the Department accepts processed green waste for ADC at \$32.00/ton.

In 2014, the Department began a pilot composting program at the Lamb Canyon landfill in order to divert organic material arriving at the landfill from disposal. The Department continues to pilot the program to determine how best to manage the waste stream and find end uses for the product while serving the best interest of the public. In an effort to determine if clean green material versus mixed green material will result in reduced handling/processing costs, the department proposes to incentivize customers by establishing a *clean green waste* rate (less than 1% contamination) of \$36.74, \$5.00 less than the proposed routine refuse rate. This rate is proposed to incentivize customers to separate green waste material from trash before it is brought to the landfill. This material will require less processing and will be processed at the Department's compost facility. Once sufficient operating cost data is gathered over time, the Department will set a rate based on those costs while taking into account fluctuating market conditions associated with green waste as a commodity. Fees for clean green waste at other composting facilities in the area range from \$30 to \$35/ton.

Appendix A – Waste Disposal Fees proposed rates:

Proposed Fee/Rate	Current Fee/ Rate	Amount of Change	% Change
1. Direct Haul/Non-Contracted Rate for Routine Refuse \$41.74/ton	\$40.51/ton	\$1.23	3.03%

**SUBMITTAL TO THE BOARD OF SUPERVISORS COUNTY OF RIVERSIDE,  
STATE OF CALIFORNIA**

<b>Proposed Fee/Rate</b>	<b>Current Fee/ Rate</b>	<b>Amount of Change</b>	<b>% Change</b>
2. Hard to Handle Refuse Rate \$55.67/ton	\$54.03/ton	\$1.64	3.03%
3. Clean Green Waste (Less than 1% contamination) Lamb Canyon Landfill Only \$36.74/ton	NA	\$36.74	100%
4. Minimum Load Fees			
a) Routine Refuse \$10.25 (.5 tons or less)	\$10.00	\$0.25	2.50%*
b) Hard to Handle \$14.50 (.5 tons or less)	\$14.00	\$0.50	3.57%*
c) Mixed Green Waste \$14.50 (.5 tons or less)	\$14.00	\$0.50	3.57%*
d) Clean Green Waste (Lamb Canyon Landfill Only) \$9.00 (.5 tons or less)	NA	\$9.00	100%
*Rounded to nearest \$0.25			
5. Surcharge Fees			
a) Passenger/light duty tires from residential customers only. No semi-truck tires. Limited to 5 tires per residential customer per day. \$2.00/tire	\$2.00/tire	\$0.00	0%
b) Uncovered Load Fee \$25.00/load	\$10.00/load	\$15.00	150%
c) Per ton for mixed green waste loads \$10.30/ton	\$10.00/ton	\$0.30	3.03%
d) Incidental Out Of County Refuse \$5.15/ton	\$5.00	\$0.15	3.03%
e) Surcharge rate per appliance requiring special handling (including but not limited to washer, dryer, refrigerator, stove, water heater, air conditioner, microwave). Limited to four appliances per day. \$4.50	NA	\$4.50	100%

**SUBMITTAL TO THE BOARD OF SUPERVISORS COUNTY OF RIVERSIDE,  
STATE OF CALIFORNIA**

<b>Proposed Fee/Rate</b>	<b>Current Fee/ Rate</b>	<b>Amount of Change</b>	<b>% Change</b>
6. No Charge Loads: a) Any vehicle hauling 2 or less loads of large trash bags, or b) Up to 2 cathode ray tubes (CRT) devices) per visitor per day, or c) Up to 3 holiday trees for recycling per residential customer through the second weekend following the Christmas holiday, or d) Material preapproved by the General Manager-Chief Engineer or Designee as needed for Beneficial Reuse or, e) Up to 2 mattresses/box springs per residential customer per day	N/A	N/A	N/A
7. Emergency Towing Services a) 10 minutes or less \$20 b) Over 10 minutes \$35	\$20.00 \$35.00	N/A N/A	N//A N/A
8. Late Staying Customers a) Every 15 minutes past closing \$60	\$60.00	N/A	N/A
9. Erosion Control Material \$10.00	\$10.00	\$0.00	N/A
10. Very Small Quantity Generator Waste (a.k.a. Conditionally Exempt Small Quantity Generator Waste) - Fees based on a Pass Through of the Departments Contracted Household Hazardous Waste Disposal Fee Added To 149% Of the Hourly Rate Of Staff Involved In Waste Disposal	N/A	N/A	N/A

**SUBMITTAL TO THE BOARD OF SUPERVISORS COUNTY OF RIVERSIDE,  
STATE OF CALIFORNIA**

<b>Proposed Fee/Rate</b>	<b>Current Fee/ Rate</b>	<b>Amount of Change</b>	<b>% Change</b>
11. Recycled Material Fees:			
a) Mixed metal items \$.05/lb.	\$.07/lb.	(\$0.02/lb.)	(29%)
b) Flat screen televisions with serial no. \$.20/lb.	\$.19/lb.	\$.01	5%
c) Flat Screen Televisions without serial no. \$.30/lb.	\$.30/lb.	N/A	N/A
d) Projection television \$.18/lb.	\$.18/lb.	N/A	N/A
e) Cathode Ray Tube (CRT) television \$.20/lb.	\$.20/lb.	N/A	N/A
f) Recycled Material Handling Fee Per Item \$6.25/item	\$6.20/item	\$.05/item	1%

Appendix B – Residential Self – Haul Cards: Proposed rate increase limited to CPI of 3.03%, addition of uncovered load fee, addition of \$2.00/tire fee for residential tires.

<b>Proposed Fee/Rate</b>	<b>Current Fee/ Rate</b>	<b>Amount of Change</b>	<b>% Change</b>
Monthly Residential Rural Site - Self Haul Card \$15.93/month	\$15.46	\$0.47	3.03%
Advance Sale – Annual Rural Site – Self Haul Card \$159.26	\$154.58	\$4.68	3.03%

Appendix C – Rural Site Access – Commercial Card: Proposed rate increase limited to CPI of 3.03%, addition of uncovered load fee.

<b>Proposed Fee/Rate</b>	<b>Current Fee/ Rate</b>	<b>Amount of Change</b>	<b>% Change</b>
Monthly Commercial Rural Site Card \$500.86	\$486.13	\$14.73	\$3.03%

Appendix D – Schedule of Miscellaneous Fees: Worm bin kit cost decrease proposed to cover current cost of replacement. The Department proposes to add a surcharge to process credit/debit card payments for landfill transactions processed by telephone at the request of the

**SUBMITTAL TO THE BOARD OF SUPERVISORS COUNTY OF RIVERSIDE,  
STATE OF CALIFORNIA**

customer. Customers are expected to provide payment at the landfill in the form of cash, credit/debit card, or department account. However, for various reasons, occasionally customers arrive to the landfill without a form of payment. They may contact their company or family member who will provide a credit/debit card for payment by telephone. When this occurs, Gate Service Attendants (GSA) contact the business office and office staff intervene to obtain credit/debit card information from the paying party and then exchange transactional information with the GSA at the landfill in order to process the payment. Once the payment is processed, the GSA emails a copy of the receipt to the office so that office staff can email a copy to the credit card holder. Customers are advised that this is a one-time exception to policy, and the transaction is logged in a spreadsheet. These transactions average 15 minutes processing time and the proposed rate is set to capture the cost of office staff time not normally engaged in Gate Fee operations.

<b>Proposed Fee/Rate</b>	<b>Current Fee/ Rate</b>	<b>Amount of Change</b>	<b>% Change</b>
Landfill Credit/Debit Telephone Surcharge \$10.95	NA	\$10.95	100%
Sale of Worm Bin Kit \$25	\$26	(\$1.00)	(3.85%)

**Prev. Agn. Ref.:** M.O. 12.1 of 4/21/20 (initiation of Ordinance)

**CEQA Findings**

The Project is exempt from CEQA pursuant to State CEQA Guidelines Section 15061(b)(3) (General Rule for Exemption), as it can be seen with certainty that there is no possibility that this Project would have a direct, indirect, or cumulatively significant effect on the environment; therefore, the activity is exempt under CEQA. Furthermore, pursuant to State CEQA Guidelines, Section 15273 (Rates, Tolls, Fares, and Charges), the Project is found to be statutorily exempt from CEQA, because the proposed changes are for the purpose of:

- Meeting operating expense, including employee wage rates and fringe benefits;
- Purchasing or leasing supplies, equipment, or materials;
- Meeting financial reserve needs and requirements; and
- Obtaining funds for existing capital projects, necessary to maintain service within existing service areas.

A NOE to this effect will be posted in accordance with Executive Order N-54-20, issued by Governor Newsom on April 22, 2020, upon adoption of Ordinance 779.21.

**Impact on Residents and Businesses**

**SUBMITTAL TO THE BOARD OF SUPERVISORS COUNTY OF RIVERSIDE,  
STATE OF CALIFORNIA**

Waste Disposal Fees are reviewed annually, and are subject to CPI adjustment which, for this period, is 3.03%. Modest fee increases are needed in order to offset impacts due to inflationary factors while meeting the need for capital improvements, and expansion projects, which allow for the continued protection of the general public health and welfare by efficient management of Riverside County's solid waste system. The Waste Disposal Fees charged under Ordinance 779.21 are the lowest in the Southern California region, and the Department does not anticipate an increase in illegal dumping, nor impacts to residents or businesses.

**ATTACHMENTS:**

ATTACHMENT A. Ordinance No. 779.21 with Appendices A-D and Exhibit 1

ATTACHMENT B. NOE 20-04



Jason Farin, Senior Management Analyst

5/13/2020



Gregory H. Priamos, Director County Counsel

5/7/2020





1  
2  
3  
4  
5  
6  
7  
8  
9  
10  
11  
12  
13  
14  
15  
16  
17  
18  
19  
20  
21  
22  
23  
24  
25  
26  
27  
28

BOARD OF SUPERVISORS OF THE COUNTY  
OF RIVERSIDE, STATE OF CALIFORNIA

By: *V. M. [Signature]*  
Chairman

ATTEST:

CLERK OF THE BOARD:  
KECIA R. HARPER

By: *Priscilla Raso*  
Deputy

(SEAL)

APPROVED AS TO FORM  
April 14, 2020

By: *Synthia M. Gunzel*  
SYNTHIA M. GUNZEL  
Chief Deputy County Counsel

1  
2  
3  
4  
5  
6  
7  
8  
9  
10  
11  
12  
13  
14  
15  
16  
17  
18  
19  
20  
21  
22  
23  
24  
25  
26  
27  
28

STATE OF CALIFORNIA        )  
  )  
COUNTY OF RIVERSIDE        )        ss

I HEREBY CERTIFY that at a regular meeting of the Board of Supervisors of said county held on May 19, 2020, the foregoing ordinance consisting of 2 Sections was adopted by the following vote:

AYES:                    Spiegel, Washington, Perez and Hewitt  
NAYS:                    Jeffries  
ABSENT:                 None

DATE:        May 19, 2020

KECIA R. HARPER  
Clerk of the Board  
BY: *Artavilla Passo*  
Deputy

SEAL

**APPENDIX A TO RIVERSIDE COUNTY ORDINANCE NO. 779.21  
SCHEDULE OF WASTE DISPOSAL FEES  
FOR  
RIVERSIDE COUNTY DEPARTMENT OF WASTE RESOURCES  
Effective July 1, 2020**

The following gate fees will be applicable at  
El Sobrante, Badlands, Lamb Canyon, and Blythe Landfills

WASTE GROUP DESCRIPTIONS	RATE
<b>1. Direct Haul/Non-Contracted Rate for Routine Refuse:</b>	
a) Cars/SUV	\$ 41.74 /ton*
b) Van, Pick-up Trucks, Pick-up Trucks w/ Trailer	\$ 41.74 /ton*
c) Non-contracted Commercial Vehicles	\$ 41.74 /ton*
<b>2. Hard to Handle Rate:</b>	
a) Applied to All End Dump Vehicles	\$ 55.67 /ton*
b) Applied to Any Load Requiring Immediate Burial or Special Handling	\$ 55.67 /ton*
<b>3. Clean Green Waste</b> (less than 1% contamination) (Lamb Canyon Landfill Only)	\$ 36.74 /ton*
<b>4. Minimum Load Fees:</b>	
a) Routine Refuse (net disposal load weight of 0.5 tons or less)	\$ 10.25 /load*
b) Mixed Green Waste Loads (net disposal load weight of 0.5 tons or less)	\$ 14.50 /load*
c) Hard to Handle Loads (net disposal load weight of 0.5 tons or less)	\$ 14.50 /load*
d) Clean Green Waste (less than 1% contamination) (net disposal load weight of 0.5 tons or less)	\$ 9.00 /load*
<b>5. Surcharges (added to the charges listed herein):</b>	
a) Passenger/Light Duty Tires From Residential Customers Only. No semi tires. Limited to 5 Tires Per Residential Customer Per Day.	\$ 2.00 /tire
b) Per Uncovered Load of Refuse Which Has Exposed Material Which in the Opinion of the General Manager-Chief Engineer or His/Her Designee May Litter Roadways to the Landfill or Along Landfill Roads to the Dumping Pad.	\$ 25.00 /load
c) Mixed Green Waste Loads	\$ 10.30 /ton*
d) Incidental Out of County Refuse	\$ 5.15 /ton**
e) Surcharge rate per appliance requiring special handling (including but not limited to washer, dryer, refrigerator, stove, water heater, air conditioner, microwave). Limited to four appliances per customer per day.	\$ 4.50 /item
<b>6. No Charge Loads:</b>	
a) Any Residential customer hauling 2 or less large trash bags per day.	No Charge
b) Up To 2 Cathode Ray Tube (CRT) Devices (e.g. TVs or computer monitors) Per Residential Customer Per Day.	
b) Up To 3 Holiday Trees For Recycling/Composting Per Residential Customer Through The Second Weekend Following The Christmas Holiday.	
c) Material Pre-Approved By The General Manager-Chief Engineer Or Designee As Needed For Beneficial Re-Use (concrete/asphalt for wet weather, etc).	
d) Up to 2 mattresses/box springs per residential customer per day.	
<b>7. Emergency Towing Services:</b>	
a) 10 Minutes or Less	\$ 20.00
b) Over 10 Minutes	\$ 35.00
<b>8. *Late Staying Customer Fees</b>	
a) Every 15 Minutes Past Closing *Arrival to pay window (outbound)	\$ 60.00

**APPENDIX A TO RIVERSIDE COUNTY ORDINANCE NO. 779.21  
SCHEDULE OF WASTE DISPOSAL FEES  
FOR  
RIVERSIDE COUNTY DEPARTMENT OF WASTE RESOURCES  
Effective July 1, 2020**

The following gate fees will be applicable at  
El Sobrante, Badlands, Lamb Canyon, and Blythe Landfills

WASTE GROUP DESCRIPTIONS	RATE
<b>9. Erosion Control Material:</b> Any vehicle hauling processed green waste approved by the General Manager-Chief Engineer or designee as needed for beneficial re-use (Erosion Control) and spread by County.	\$ 10.00 /ton*
<b>10. Very Small Quantity Generator Waste (a.k.a. Conditionally Exempt Small Quantity Generator Waste) - Fees based on a Pass Through of the Departments Contracted Household Hazardous Waste Disposal Fee Added To 1.49% of the hourly rate of staff involved in waste disposal.</b>	varies*
<b>11. Recycled Materials Fees (sale of items):</b>	
a) Mixed Metal Items	\$ 0.05 /pound*
b) Flat Screen Television with serial no.	\$ 0.20 /pound*
c) Flat Screen Television without serial no.	\$ 0.30 /pound*
d) Projection Television	\$ 0.18 /pound*
e) Cathode Ray Tube (CRT) Television	\$ 0.20 /pound*
f) Recycled Material Handling Surcharge Fee Per Item	\$ 6.25 /item
<b>Restrictions:</b>	
1.) Four (4) Appliance Limit Per Residential Customer Per Day. No Commercial/Business Appliance Loads Accepted	
2.) Five (5) Tires Per Residential Customer Per Day. No semi tires. No Commercial/Business Tire Loads Accepted.	
3.) Two (2) Mattresses Per Residential Customer Per Day. No Commercial/Business Mattress Loads Accepted.	
<b>Definitions</b>	
1.) Clean Green Waste <ul style="list-style-type: none"> <li>a) Acceptable: bushes, tree trimmings, grass clippings</li> <li>b) Unacceptable: sod, soil, cactus, yucca, tumbleweeds, lumber/wood, concrete, glass, plastic, metal, trash, palm fronds.</li> </ul>	
2.) Mixed Green Waste - Green waste with greater than 1% contamination of unacceptable material.	
<b>NOTES:</b>	
1) Rate for Transfer Trucks determined by individual contracts.	
2) Loads of dead sheep or small calves from the Blythe service area separated from other waste will be received at no charge at the Blythe Landfill (daily from 8am to 9am) due to health and safety risk in the vast open canal system in the area.	
3) Certified loads of illegally dumped nonhazardous municipal solid waste retrieved along open flowing irrigation canals, which are delivered by the agency responsible for maintaining the canals shall be received at no charge at the Blythe Landfill.	
4) The General Manager-Chief Engineer is authorized to recoup costs associated with the segregation of unauthorized waste commingled with routine refuse.	
* Cash customers prorated to the nearest \$0.25	
** Exception - El Sobrante Landfill. Incidental Out of County (OOC) rate established by Waste Management, Inc.	

**APPENDIX B TO ORDINANCE NO. 779.21  
RESIDENTIAL SELF-HAUL CARDS and OTHER FEES - OASIS LANDFILL  
FOR  
RIVERSIDE COUNTY DEPARTMENT OF WASTE RESOURCES  
Effective July 1, 2020**

The Residential Self-Haul Card shall be necessary for admittance to the Oasis Landfill for all residential haulers. For use by residents of Oasis, Mecca, North Shore, and Thermal.

**RESIDENTIAL CARD REGULATIONS:**

**Authority:** Riverside County Ordinance No. 657 requires that, "Every tenant, occupier, operator, or owner of a residence... shall not less than once a week, cause to be removed all solid waste created, produced or brought upon the property to an approved disposal facility."

1. **Number of Uses** - Monthly Residential Self-Haul Card allows up to 4-400 lb. standard load uses per month.
2. **Expiration Date** - The expiration date for the yearly card is the last day of the fiscal year, June 30th. The expiration date for monthly cards is the last day of the month. In addition, any unused punches for each month will expire on the last day of that month.
3. **No Refunds** - There will be no refunds on partially used cards.
4. **Standard Load** - The maximum load allowed access to the landfill with one use of the Residential Self-Haul Card will be four hundred (400) pounds, which is equivalent to one punch on the card. If the Gate Services Assistant judges a load to be over this Standard Load limit, two or more punches will be made to the card.
5. **Cost** - The Residential Self-Haul Card discounted rate is fifteen dollars and ninety three cents (\$15.93) per month.
6. **Payment Options – Cards may be purchased:**

Period	Cost	Number of Punches One Punch Per 400 lb. Standard Load. Additional Punches Applied in Excess of Standard Load.
Monthly	\$15.93	4
Advance Sale - Annual (purchased on or before June 30th)	\$159.26	52 (400 lb. estimated load per punch)
Multiple Months	\$15.93 no. of months	4 x no. of months

7. **Lost Cards** - Lost cards are to be reported immediately. The customer will not be responsible for unauthorized use of a card after if it is reported lost to the Waste Resources business office located at 14310 Frederick Street, Moreno Valley, CA 92553, (951) 486-3200.
8. **Restrictions on Use of Card** - Household hazardous waste, other hard-to-handle waste, or commercial business waste will not be accepted on this card. Card may only be used by persons residing at the purchaser's address on file.
9. **Alternative Riverside County Landfill Usage** – In the event that the rural landfill is unable to accept waste on a normal operating day, customers will be directed to a scaled Riverside County landfill and may use their Residential Self Haul Card.

**APPENDIX C TO ORDINANCE NO. 779.21  
RURAL SITE ACCESS - COMMERCIAL CARDS - OASIS LANDFILL  
FOR  
RIVERSIDE COUNTY DEPARTMENT OF WASTE RESOURCES  
Effective July 1, 2020**

The Rural Site Access Commercial Card shall be necessary for admittance to the Oasis Landfill for all non-permitted/contracted entities hauling commercial waste. For use by commercial entities of Oasis, Mecca, North Shore, and Thermal.

**COMMERCIAL CARD REGULATIONS:**

A Rural Site Access Commercial Card provides for disposal of commercial waste generated within the remote service areas and is required unless a permitted waste hauler or other large commercial users have negotiated a separate contract for disposal access to rural landfills with the County.

1. **Number of Uses** - The Commercial Card will have twenty-four (24) ½ ton available uses.
2. **Expiration Date** - There is no expiration date for the Commercial Card.
3. **No Refunds** - If a commercial operator goes out of business, there shall be no refund for the unused card punches.
4. **Cost** - The Commercial Card will be priced at five hundred dollars and eighty-six cents (\$500.86).
5. **Payment for Card** - The card shall be purchased in advance of usage. Cards may be purchased at any time of the year. Acceptable forms of payment at the fee booth include money order or cashier's check. Cash, personal/business checks, and credit/debit card payments are accepted at the Department's business office or by phone (951) 486-3200.
6. **Lost Cards** - Lost cards are to be reported immediately. The customer will not be responsible for unauthorized use of a card after it is reported lost to the Waste Resources business office located at 14310 Frederick St., Moreno Valley, CA. (951) 486-3200.
7. **Restrictions on Use of Card** - Hazardous waste, tires, or other hard-to-handle waste will not be accepted at the Oasis landfill from commercial haulers.
8. **Alternative Riverside County Landfill Usage** - In the event that the rural landfill is unable to accept waste on a normal operating day, customers will be directed to a scaled Riverside County landfill and may use their Rural Site Commercial Card.

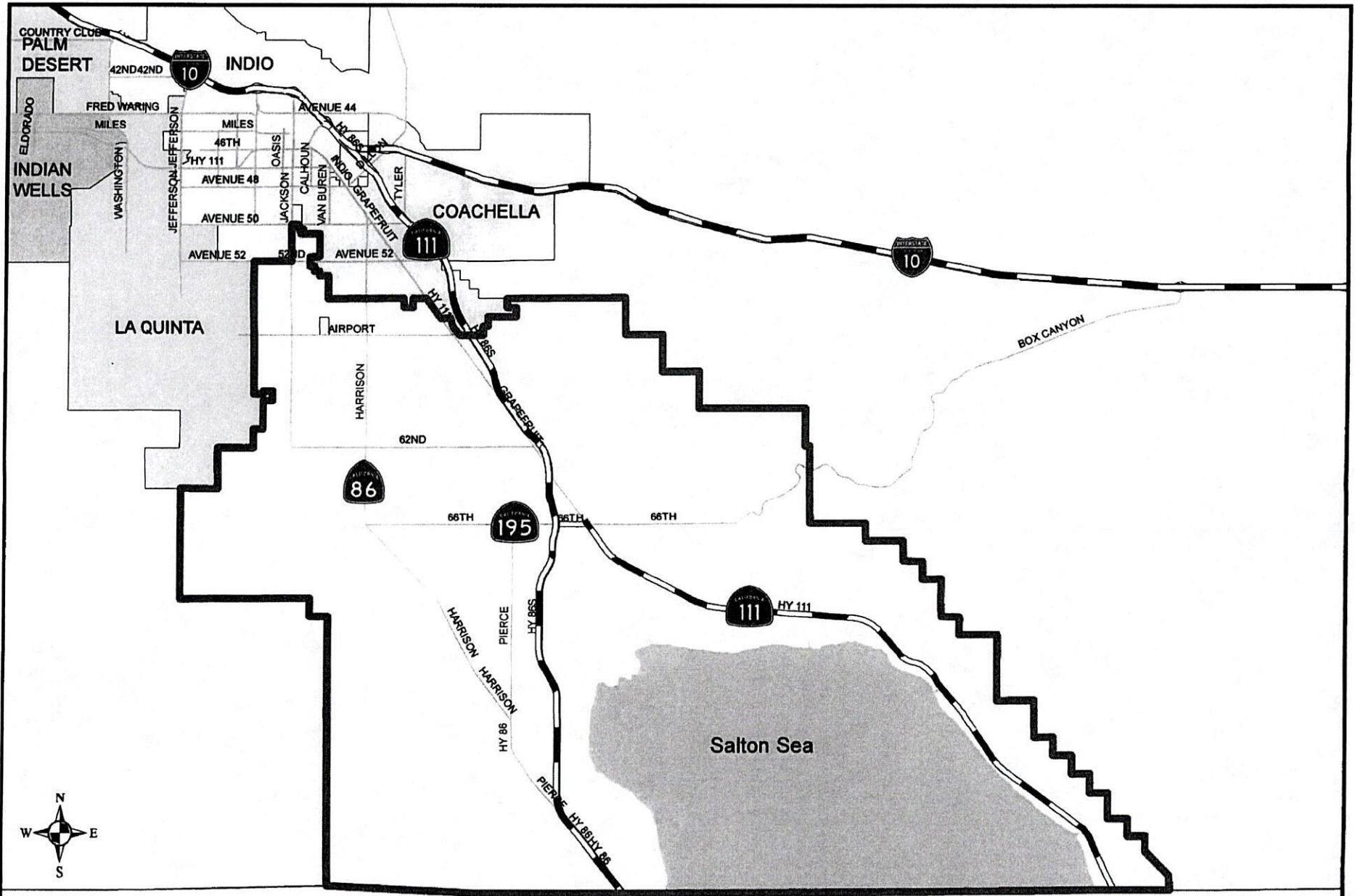
APPENDIX D TO RIVERSIDE COUNTY ORDINANCE NO. 779.21  
SCHEDULE OF MISCELLANEOUS FEES  
FOR  
RIVERSIDE COUNTY DEPARTMENT OF WASTE RESOURCES  
Effective July 1, 2020

<b>FEES FOR DEPARTMENT PUBLICATIONS</b>		
Document Name	Document Fee	Mailing/Handling Cost
Countywide Integrated Waste Management Plan (CIWMP)	\$60.00	\$10.00
Source Reduction and Recycling Element (SRRE) and Household Hazardous Waste Element (HHWE)	\$60.00	\$10.00
Nondisposal Facility Element (NDFE)	\$10.00	\$5.00
Countywide Disposal Tonnage Tracking System (CDTTS) Procedure Manual	\$50.00	\$10.00
Copy Service (Note: all map copies are on bond unless special request is made. Extra charge for special materials.)		Copy Fee
Plotter Printer Map Copies		
Size D		\$4.50
8-1/2"x 11"		.15 per side
8-1/2" x 14"		.15 per side
11" x 17"		.30 per side
Color Copies		
8-1/2"x 11"		\$1 per side
8-1/2" x 14"		\$1 per side
11" x 17"		\$2 per side
Request for Extra Ticket Copies		10¢/page w/ \$1.00 minimum
Request for Extra Billing Statement Copies		10¢/page w/ \$1.00 minimum
Requests for Document Copies in Electronic Format (e.g. CD)		\$5.75/disc + \$2.25 for postage & mailer
<b>OTHER FEES</b>		
Service	Fee	
Replacement of Self Haul or Rural Site Access Cards	\$10.00	
Cards Ordered After Initial Setup of a Deferred Billing Account or Sub-Account Replacement Access Cards for Deferred and Pre-paid Account Holders	\$3.00 each	
Setup Fee for Each Deferred Billing Account	\$50.00	
Setup Fee for Each Deferred Billing Sub-Account	\$25.00	
Administrative Charge for Delinquent Deferred Account Payment	1-1/2% per billing period on unpaid balance if payment is not made within 15 days from billing.	
Checks Returned for Non-Sufficient Funds (NSF)	\$20.00 per occurrence	
Account Correction Due to Hauler Resulting From Driver Error Fee [Commercial Hauler Error Resulting in Voided and Corrected Ticket Due to the Driver Providing Incorrect Information at Time of Transaction (i.e. Incorrect Account Number, Mis-identified Refuse Type, etc.)	\$25.00 per occurrence	
Late Ticket Submittals as Described in the CDTTS Procedure Manual	\$25.00 per day	
Credit/Debit Card Transaction Fee	percentage of transaction fee per County of Riverside Resolution No. 2018-128	
Landfill Transaction Credit/Debit Processing by Telephone Surcharge	\$10.95	



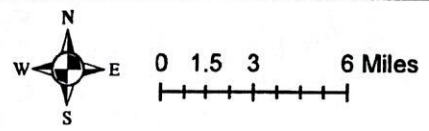
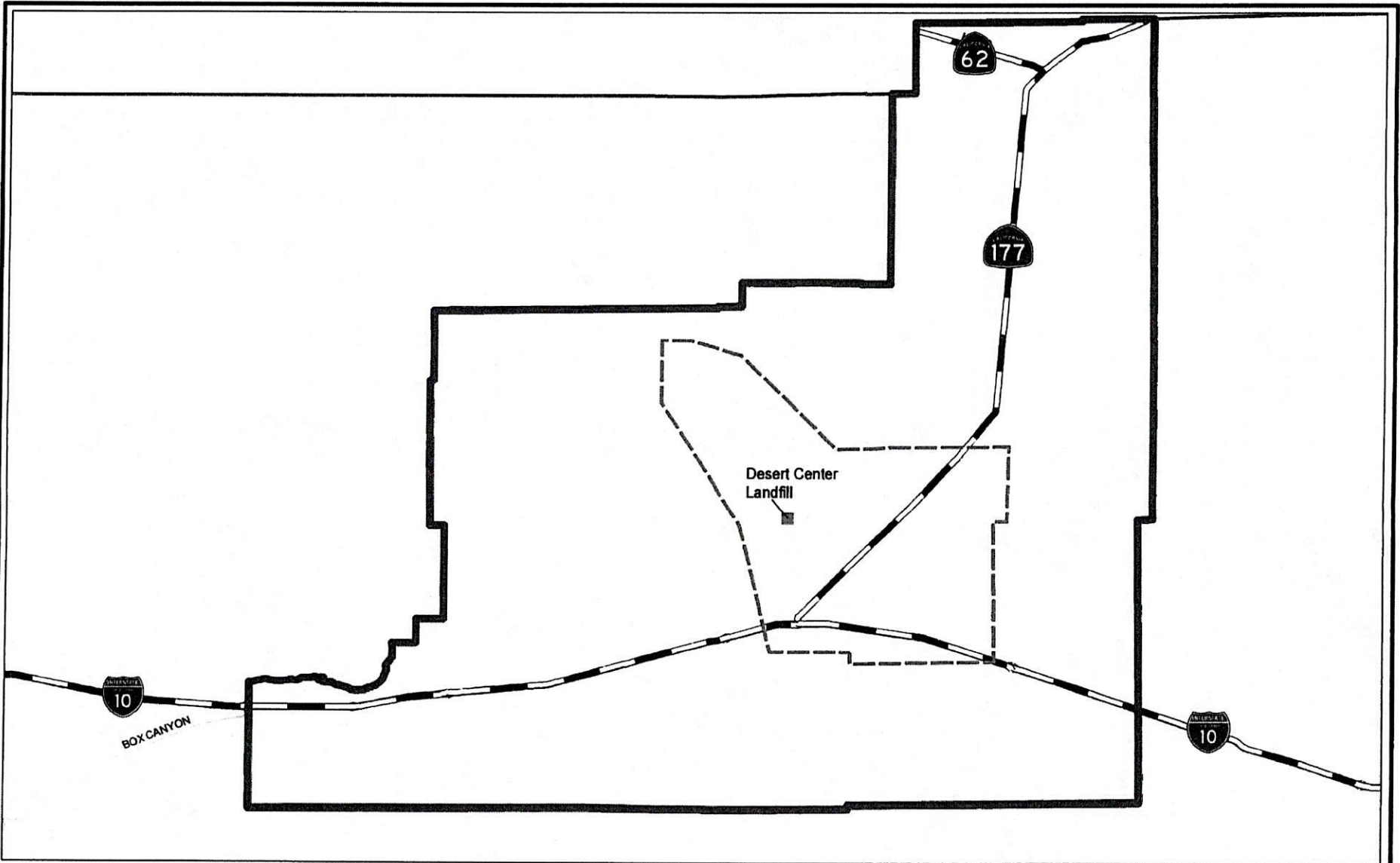
APPENDIX D TO RIVERSIDE COUNTY ORDINANCE NO. 779.21  
 SCHEDULE OF MISCELLANEOUS FEES  
 FOR  
 RIVERSIDE COUNTY DEPARTMENT OF WASTE RESOURCES  
 Effective July 1, 2020

	Actual Hourly Cost of Personnel
Base Hourly Rates for Services Rendered	
Departmental Overhead Rate applied to Basic Hourly Rates	49%
Special FAX Requests for Accounts Receivable	\$3.00 for the 1st page \$1.00 for each additional page
Special Accounts Receivable Research Requests	No charge within 30 days of statement date; \$3.75/qrtr hr if requested past 30 days
Sale of Orange Polyester Safety Vest to Landfill Visitors	\$9.00
Sale of Orange Safety Vest to Landfill Visitors	\$0.75
Sale of Compost Bins to Riverside County Residents Only	Geobin -- \$12.00
Sale of Worm Bin Kit	\$25.00
<b>Lend-A-Bin Program Fees (must provide a valid credit/debit card at time of bin is loaned)</b>	
(a) Replacement Fee	\$64.95
(b) Cleaning Fee	\$13.00
(c) Late Fee	\$13.00



San Diego County | Imperial County


# Rural Site Service Area #1



**Legend**

-  Desert Center Landfill
-  Existing Desert Center Landuse Area
-  Rural Site Service Area # 2

Note: 2718 Total parcels within the service area.  
 196 of those parcels have a structure value  
 & a non-vacant landuse code

 **Riverside County**  
**Waste Management Department**

## Rural Site Service Area #2



OFFICE OF THE  
CLERK OF THE BOARD OF SUPERVISORS  
1st FLOOR, COUNTY ADMINISTRATIVE CENTER  
P.O. BOX 1147, 4080 LEMON STREET  
RIVERSIDE, CA 92502-1147  
PHONE: (951) 955-1060 FAX: (951) 955-1071

KECIA R. HARPER  
Clerk of the Board of Supervisors

KIMBERLY A. RECTOR  
Assistant Clerk of the Board

May 26, 2020

PRESS ENTERPRISE  
ATTN: LEGALS  
P.O. BOX 792  
RIVERSIDE, CA 92501

E-MAIL: [legals@pe.com](mailto:legals@pe.com)  
FAX: 951-368-9018

RE: NOTICE OF ADOPTION OF ORDINANCE 779.21

To Whom It May Concern:

Attached is a copy for publication in your newspaper for **ONE (1) TIME** on **Saturday, May 30, 2020**.

We require your affidavit of publication immediately upon completion of the last publication.

Your invoice must be submitted to this office, **WITH TWO CLIPPINGS OF THE PUBLICATION**.

NOTE: PLEASE COMPOSE THIS PUBLICATION INTO A SINGLE COLUMN  
FORMAT.

Thank you in advance for your assistance and expertise.

Sincerely,

*Hannah Lumanauw*

Board Assistant to:  
KECIA R. HARPER, CLERK OF THE BOARD



OFFICE OF  
CLERK OF THE BOARD OF SUPERVISORS  
1<sup>ST</sup> FLOOR, COUNTY ADMINISTRATIVE CENTER  
P.O. BOX 1147, 4080 LEMON STREET  
RIVERSIDE, CA 92502-1147  
PHONE: (951) 955-1060  
FAX: (951) 955-1071

KECIA R. HARPER  
Clerk of the Board of Supervisors

KIMBERLY A. RECTOR  
Assistant Clerk of the Board

April 26, 2020

THE DESERT SUN  
ATTN: LEGALS  
P.O. BOX 2734  
PALM SPRINGS, CA 92263

E-MAIL: [legals@thedesertsun.com](mailto:legals@thedesertsun.com)  
TEL: (760)778-4578

RE: NOTICE OF ADOPTION OF ORDINANCE 779.21

To Whom It May Concern:

Attached is a copy for publication in your newspaper for **ONE (1) TIME** on **Saturday, May 30, 2020**.

We require your affidavit of publication immediately upon completion of the last publication.

Your invoice must be submitted to this office, **WITH TWO CLIPPINGS OF THE PUBLICATION**.

NOTE: PLEASE COMPOSE THIS PUBLICATION INTO A SINGLE COLUMN FORMAT.

Thank you in advance for your assistance and expertise.

Sincerely,

*Hannah Lumanauw*

Board Assistant to:  
KECIA R. HARPER, CLERK OF THE BOARD

BOARD OF SUPERVISORS OF THE COUNTY OF RIVERSIDE, STATE OF CALIFORNIA

**ORDINANCE NO. 779.21**  
**AN ORDINANCE OF THE COUNTY OF RIVERSIDE**  
**AMENDING ORDINANCE NO. 779 RELATING TO**  
**COUNTY SOLID WASTE FACILITIES AND ESTABLISHING FEES**

The Board of Supervisors of the County of Riverside ordains as follows:

Section 1. ATTACHMENTS. Section 11. of Ordinance No. 779 is amended to read as follows:

“Section 11. ATTACHMENTS. The following attachments as referenced above in this Ordinance are attached hereto and by this reference incorporated herein:

**APPENDIX A: Appendix A to the Riverside County Ordinance No. 779.21 Schedule of Waste Disposal Fees for Riverside County Department of Waste Resources**

**APPENDIX B: Appendix B to Ordinance No. 779.21 Residential Self-Haul Cards and Other Fees – Oasis Landfill for Riverside County Department of Waste Resources**

**APPENDIX C: Appendix C to Ordinance No. 779.21 Rural Site Access – Commercial Cards – Oasis Landfill for Riverside County Department of Waste Resources**

**APPENDIX D: Appendix C to Ordinance No. 779.21 Schedule of Miscellaneous Fees for Riverside County Department of Waste Resources**

**EXHIBIT 1: Rural Site Service Area #1 & Rural Site Service Area #2”**

Section 2. EFFECTIVE DATE. This ordinance shall take effect thirty (30) days after its adoption.

INSERT ATTACHMENTS

V. Manuel Perez, Chairman of the Board

I HEREBY CERTIFY that at a regular meeting of the Board of Supervisors of said County, held on May 19, 2020, the foregoing Ordinance consisting of two (2) sections was adopted by said Board by the following vote:

AYES: Spiegel, Washington, Perez, and Hewitt  
NAYS: Jeffries  
ABSENT: None

Kecia R. Harper, Clerk of the Board  
By: Hannah Lumanauw, Board Assistant

**APPENDIX A TO RIVERSIDE COUNTY ORDINANCE NO. 779.21  
SCHEDULE OF WASTE DISPOSAL FEES  
FOR  
RIVERSIDE COUNTY DEPARTMENT OF WASTE RESOURCES  
Effective July 1, 2020**

The following gate fees will be applicable at  
El Sobrante, Badlands, Lamb Canyon, and Blythe Landfills

WASTE GROUP DESCRIPTIONS	RATE
1. <b>Direct Haul/Non-Contracted Rate for Routine Refuse:</b>	
a) Cars/SUV	\$ 41.74 /ton*
b) Van, Pick-up Trucks, Pick-up Trucks w/ Trailer	\$ 41.74 /ton*
c) Non-contracted Commercial Vehicles	\$ 41.74 /ton*
2. <b>Hard to Handle Rate:</b>	
a) Applied to All End Dump Vehicles	\$ 55.67 /ton*
b) Applied to Any Load Requiring Immediate Burial or Special Handling	\$ 55.67 /ton*
3. <b>Clean Green Waste</b> (less than 1% contamination) (Lamb Canyon Landfill Only)	\$ 36.74 /ton*
4. <b>Minimum Load Fees:</b>	
a) Routine Refuse (net disposal load weight of 0.5 tons or less)	\$ 10.25 /load*
b) Mixed Green Waste Loads (net disposal load weight of 0.5 tons or less)	\$ 14.50 /load*
c) Hard to Handle Loads (net disposal load weight of 0.5 tons or less)	\$ 14.50 /load*
d) Clean Green Waste (less than 1% contamination) (net disposal load weight of 0.5 tons or less)	\$ 9.00 /load*
5. <b>Surcharges (added to the charges listed herein):</b>	
a) Passenger/Light Duty Tires From Residential Customers Only. No semi tires. Limited to 5 Tires Per Residential Customer Per Day.	\$ 2.00 /tire
b) Per Uncovered Load of Refuse Which Has Exposed Material Which in the Opinion of the General Manager-Chief Engineer or His/Her Designee May Litter Roadways to the Landfill or Along Landfill Roads to the Dumping Pad.	\$ 25.00 /load
c) Mixed Green Waste Loads	\$ 10.30 /ton*
d) Incidental Out of County Refuse	\$ 5.15 /ton**
e) Surcharge rate per appliance requiring special handling (including but not limited to washer, dryer, refrigerator, stove, water heater, air conditioner, microwave). Limited to four appliances per customer per day.	\$ 4.50 /item
6. <b>No Charge Loads:</b>	
a) Any Residential customer hauling 2 or less large trash bags per day.	No Charge
b) Up To 2 Cathode Ray Tube (CRT) Devices (e.g. TVs or computer monitors) Per Residential Customer Per Day.	
b) Up To 3 Holiday Trees For Recycling/Composting Per Residential Customer Through The Second Weekend Following The Christmas Holiday.	
c) Material Pre-Approved By The General Manager-Chief Engineer Or Designee As Needed For Beneficial Re-Use (concrete/asphalt for wet weather, etc).	
d) Up to 2 mattresses/box springs per residential customer per day.	
7. <b>Emergency Towing Services:</b>	
a) 10 Minutes or Less	\$ 20.00
b) Over 10 Minutes	\$ 35.00
8. <b>*Late Staying Customer Fees</b>	
a) Every 15 Minutes Past Closing *Arrival to pay window (outbound)	\$ 60.00

**APPENDIX A TO RIVERSIDE COUNTY ORDINANCE NO. 779.21  
SCHEDULE OF WASTE DISPOSAL FEES  
FOR  
RIVERSIDE COUNTY DEPARTMENT OF WASTE RESOURCES  
Effective July 1, 2020**

The following gate fees will be applicable at  
El Sobrante, Badlands, Lamb Canyon, and Blythe Landfills

<b>WASTE GROUP DESCRIPTIONS</b>	<b>RATE</b>
<b>9. Erosion Control Material:</b> Any vehicle hauling processed green waste approved by the General Manager-Chief Engineer or designee as needed for beneficial re-use (Erosion Control) and spread by County.	\$ 10.00 /ton*
<b>10. Very Small Quantity Generator Waste (a.k.a. Conditionally Exempt Small Quantity Generator Waste)</b> - Fees based on a Pass Through of the Departments Contracted Household Hazardous Waste Disposal Fee Added To 149% of the hourly rate of staff involved in waste disposal.	varies*
<b>11. Recycled Materials Fees (sale of items):</b> a) Mixed Metal Items b) Flat Screen Television with serial no. c) Flat Screen Television without serial no. d) Projection Television e) Cathode Ray Tube (CRT) Television f) Recycled Material Handling Surcharge Fee Per Item	\$ 0.05 /pound* \$ 0.20 /pound* \$ 0.30 /pound* \$ 0.18 /pound* \$ 0.20 /pound* \$ 6.25 /item
<b>Restrictions:</b> 1.) Four (4) Appliance Limit Per Residential Customer Per Day. No Commercial/Business Appliance Loads Accepted 2.) Five (5) Tires Per Residential Customer Per Day. No semi tires. No Commercial/Business Tire Loads Accepted. 3.) Two (2) Mattresses Per Residential Customer Per Day. No Commercial/Business Mattress Loads Accepted.	
<b>Definitions</b> 1.) Clean Green Waste a) Acceptable: bushes, tree trimmings, grass clippings b) Unacceptable: sod, soil, cactus, yucca, tumbleweeds, lumber/wood, concrete, glass, plastic, metal, trash, palm fronds. 2.) Mixed Green Waste - Green waste with greater than 1% contamination of unacceptable material.	
<b>NOTES:</b> 1) Rate for Transfer Trucks determined by individual contracts. 2) Loads of dead sheep or small calves from the Blythe service area separated from other waste will be received at no charge at the Blythe Landfill (daily from 8am to 9am) due to health and safety risk in the vast open canal system in the area. 3) Certified loads of illegally dumped nonhazardous municipal solid waste retrieved along open flowing irrigation canals, which are delivered by the agency responsible for maintaining the canals shall be received at no charge at the Blythe Landfill. 4) The General Manager-Chief Engineer is authorized to recoup costs associated with the segregation of unauthorized waste commingled with routine refuse. * Cash customers prorated to the nearest \$0.25 ** Exception - El Sobrante Landfill. Incidental Out of County (OOC) rate established by Waste Management, Inc.	



**APPENDIX B TO ORDINANCE NO. 779.21  
RESIDENTIAL SELF-HAUL CARDS and OTHER FEES - OASIS LANDFILL  
FOR  
RIVERSIDE COUNTY DEPARTMENT OF WASTE RESOURCES  
Effective July 1, 2020**

The Residential Self-Haul Card shall be necessary for admittance to the Oasis Landfill for all residential haulers. For use by residents of Oasis, Mecca, North Shore, and Thermal.

**RESIDENTIAL CARD REGULATIONS:**

**Authority:** Riverside County Ordinance No. 657 requires that, "Every tenant, occupier, operator, or owner of a residence...shall not less than once a week, cause to be removed all solid waste created, produced or brought upon the property to an approved disposal facility."

1. **Number of Uses** - Monthly Residential Self-Haul Card allows up to 4-400 lb. standard load uses per month.
2. **Expiration Date** - The expiration date for the yearly card is the last day of the fiscal year, June 30th. The expiration date for monthly cards is the last day of the month. In addition, any unused punches for each month will expire on the last day of that month.
3. **No Refunds** - There will be no refunds on partially used cards.
4. **Standard Load** - The maximum load allowed access to the landfill with one use of the Residential Self-Haul Card will be four hundred (400) pounds, which is equivalent to one punch on the card. If the Gate Services Assistant judges a load to be over this Standard Load limit, two or more punches will be made to the card.
5. **Cost** - The Residential Self-Haul Card discounted rate is fifteen dollars and ninety three cents (\$15.93) per month.
6. **Payment Options – Cards may be purchased:**

Period	Cost	Number of Punches One Punch Per 400 lb. Standard Load. Additional Punches Applied in Excess of Standard Load.
Monthly	\$15.93	4
Advance Sale - Annual (purchased on or before June 30th)	\$159.26	52 (400 lb. estimated load per punch)
Multiple Months	\$15.93 no. of months	4 x no. of months

7. **Lost Cards** - Lost cards are to be reported immediately. The customer will not be responsible for unauthorized use of a card after if it is reported lost to the Waste Resources business office located at 14310 Frederick Street, Moreno Valley, CA 92553, (951) 486-3200.
8. **Restrictions on Use of Card** - Household hazardous waste, other hard-to-handle waste, or commercial business waste will not be accepted on this card. Card may only be used by persons residing at the purchaser's address on file.
9. **Alternative Riverside County Landfill Usage** – In the event that the rural landfill is unable to accept waste on a normal operating day, customers will be directed to a scaled Riverside County landfill and may use their Residential Self Haul Card.

**APPENDIX C TO ORDINANCE NO. 779.21  
RURAL SITE ACCESS - COMMERCIAL CARDS - OASIS LANDFILL  
FOR  
RIVERSIDE COUNTY DEPARTMENT OF WASTE RESOURCES  
Effective July 1, 2020**

The Rural Site Access Commercial Card shall be necessary for admittance to the Oasis Landfill for all non-permitted/contracted entities hauling commercial waste. For use by commercial entities of Oasis, Mecca, North Shore, and Thermal.

**COMMERCIAL CARD REGULATIONS:**

A Rural Site Access Commercial Card provides for disposal of commercial waste generated within the remote service areas and is required unless a permitted waste hauler or other large commercial users have negotiated a separate contract for disposal access to rural landfills with the County.

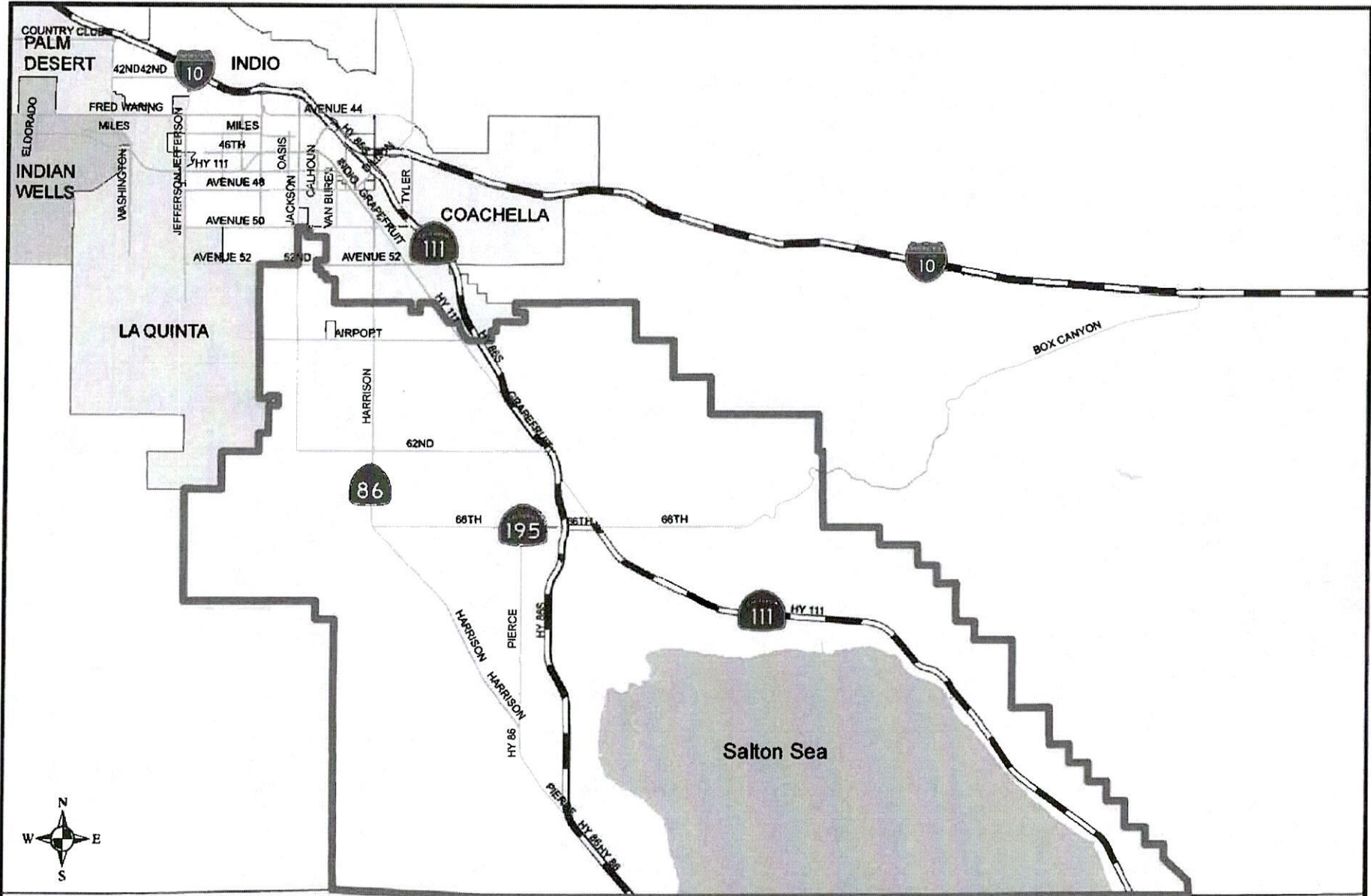
1. **Number of Uses** - The Commercial Card will have twenty-four (24) ½ ton available uses.
2. **Expiration Date** - There is no expiration date for the Commercial Card.
3. **No Refunds** - If a commercial operator goes out of business, there shall be no refund for the unused card punches.
4. **Cost** - The Commercial Card will be priced at five hundred dollars and eighty-six cents (\$500.86).
5. **Payment for Card** - The card shall be purchased in advance of usage. Cards may be purchased at any time of the year. Acceptable forms of payment at the fee booth include money order or cashier's check. Cash, personal/business checks, and credit/debit card payments are accepted at the Department's business office or by phone (951) 486-3200.
6. **Lost Cards** - Lost cards are to be reported immediately. The customer will not be responsible for unauthorized use of a card after it is reported lost to the Waste Resources business office located at 14310 Frederick St., Moreno Valley, CA. (951) 486-3200.
7. **Restrictions on Use of Card** - Hazardous waste, tires, or other hard-to-handle waste will not be accepted at the Oasis landfill from commercial haulers.
8. **Alternative Riverside County Landfill Usage** - In the event that the rural landfill is unable to accept waste on a normal operating day, customers will be directed to a scaled Riverside County landfill and may use their Rural Site Commercial Card.

APPENDIX D TO RIVERSIDE COUNTY ORDINANCE NO. 779.21  
 SCHEDULE OF MISCELLANEOUS FEES  
 FOR  
 RIVERSIDE COUNTY DEPARTMENT OF WASTE RESOURCES  
 Effective July 1, 2020

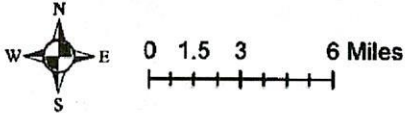
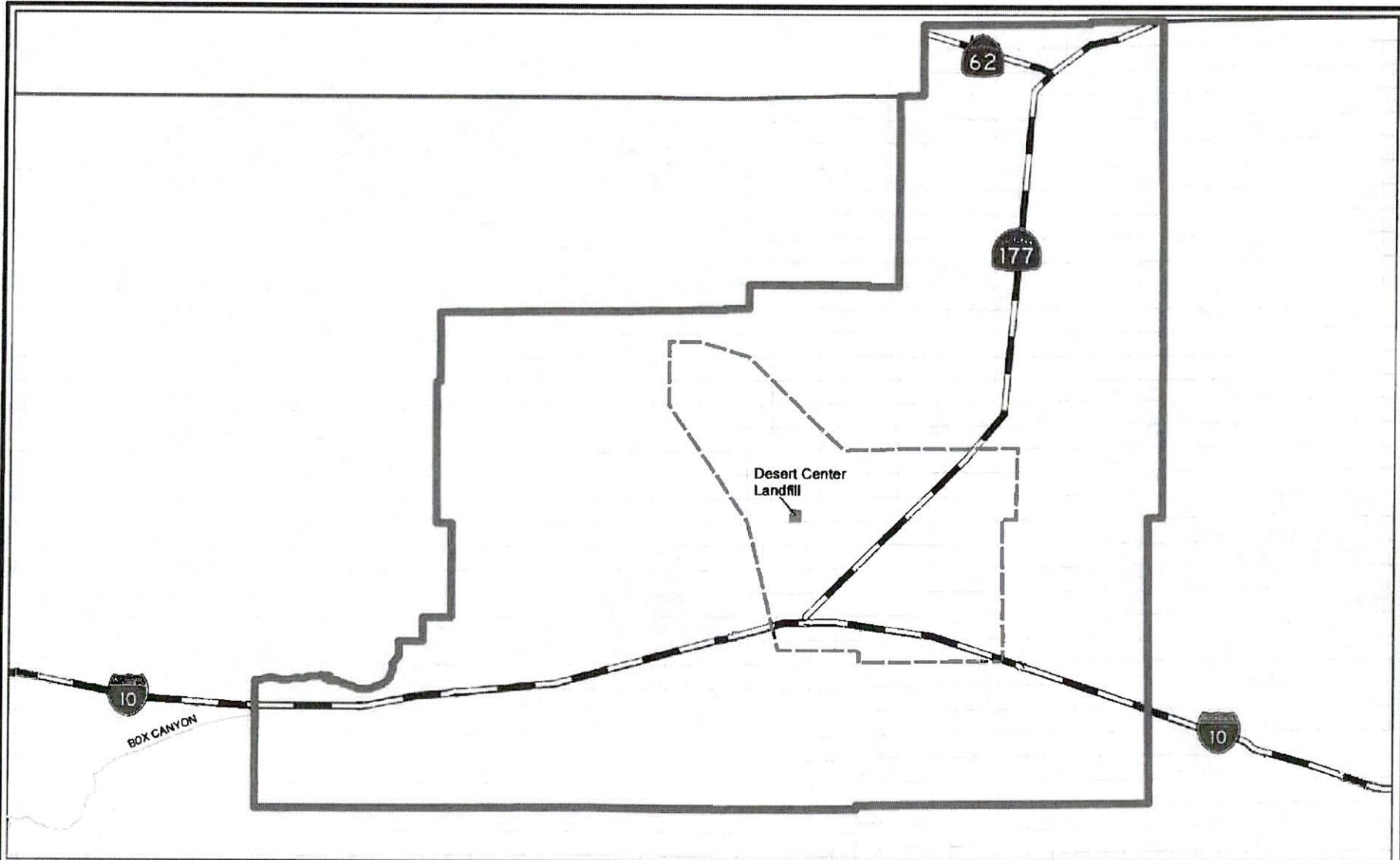
<b>FEES FOR DEPARTMENT PUBLICATIONS</b>		
Document Name	Document Fee	Mailing/Handling Cost
Countywide Integrated Waste Management Plan (CIWMP)	\$60.00	\$10.00
Source Reduction and Recycling Element (SRRE) and Household Hazardous Waste Element (HHWE)	\$60.00	\$10.00
Nondisposal Facility Element (NDFE)	\$10.00	\$5.00
Countywide Disposal Tonnage Tracking System (CDTTS) Procedure Manual	\$50.00	\$10.00
<b>Copy Service</b> (Note: all map copies are on bond unless special request is made. Extra charge for special materials.)		Copy Fee
Plotter Printer Map Copies		
Size D		\$4.50
8-1/2" x 11"		.15 per side
8-1/2" x 14"		.15 per side
11" x 17"		.30 per side
Color Copies		
8-1/2" x 11"		\$1 per side
8-1/2" x 14"		\$1 per side
11" x 17"		\$2 per side
Request for Extra Ticket Copies		10¢/page w/ \$1.00 minimum
Request for Extra Billing Statement Copies		10¢/page w/ \$1.00 minimum
Requests for Document Copies in Electronic Format (e.g. CD)		\$5.75/disc + \$2.25 for postage & mailer
<b>OTHER FEES</b>		
Service	Fee	
Replacement of Self Haul or Rural Site Access Cards	\$10.00	
Cards Ordered After Initial Setup of a Deferred Billing Account or Sub-Account Replacement Access Cards for Deferred and Pre-paid Account Holders	\$3.00 each	
Setup Fee for Each Deferred Billing Account	\$50.00	
Setup Fee for Each Deferred Billing Sub-Account	\$25.00	
Administrative Charge for Delinquent Deferred Account Payment	1-1/2% per billing period on unpaid balance if payment is not made within 15 days from billing.	
Checks Returned for Non-Sufficient Funds (NSF)	\$20.00 per occurrence	
Account Correction Due to Hauler Resulting From Driver Error Fee [Commercial Hauler Error Resulting in Voided and Corrected Ticket Due to the Driver Providing Incorrect Information at Time of Transaction (i.e. Incorrect Account Number, Mis-identified Refuse Type, etc.)]	\$25.00 per occurrence	
Late Ticket Submittals as Described in the CDTTS Procedure Manual	\$25.00 per day	
Credit/Debit Card Transaction Fee	percentage of transaction fee per County of Riverside Resolution No. 2018-128	
Landfill Transaction Credit/Debit Processing by Telephone Surcharge	\$10.95	

APPENDIX D TO RIVERSIDE COUNTY ORDINANCE NO. 779.21  
 SCHEDULE OF MISCELLANEOUS FEES  
 FOR  
 RIVERSIDE COUNTY DEPARTMENT OF WASTE RESOURCES  
 Effective July 1, 2020




Base Hourly Rates for Services Rendered	Actual Hourly Cost of Personnel
Departmental Overhead Rate applied to Basic Hourly Rates	49%
Special FAX Requests for Accounts Receivable	\$3.00 for the 1st page \$1.00 for each additional page
Special Accounts Receivable Research Requests	No charge within 30 days of statement date; \$3.75/qrtr hr if requested past 30 days
Sale of Orange Polyester Safety Vest to Landfill Visitors	\$9.00
Sale of Orange Safety Vest to Landfill Visitors	\$0.75
Sale of Compost Bins to Riverside County Residents Only	Geobin – \$12.00
Sale of Worm Bin Kit	\$25.00
<b>Lend-A-Bin Program Fees (must provide a valid credit/debit card at time of bin is loaned)</b>	
(a) Replacement Fee	\$64.95
(b) Cleaning Fee	\$13.00
(c) Late Fee	\$13.00




San Diego County | Imperial County



**Legend**

-  Desert Center Landfill
-  Existing Desert Center Landuse Area
-  Rural Site Service Area # 2

Note: 2718 Total parcels within the service area.  
196 of those parcels have a structure value  
& a non-vacant landuse code

 **Riverside County**  
**Waste Management Department**

## Rural Site Service Area #2

**SUBMITTAL TO THE BOARD OF SUPERVISORS  
COUNTY OF RIVERSIDE, STATE OF CALIFORNIA**



**ITEM: 12.1**  
(ID # 12309)

**MEETING DATE:**  
Tuesday, April 21, 2020

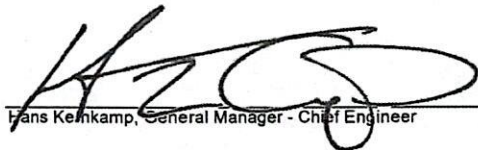
**FROM :** DEPARTMENT OF WASTE RESOURCES:

**SUBJECT:** DEPARTMENT OF WASTE RESOURCES: Introduction of Riverside County Ordinance No. 779.21 Amending Ordinance No. 779. Relating to County Solid Waste Facilities and Establishing Fees; All Districts. [\$0 Waste Resources Enterprise Funds] (Clerk to Advertise – Set Public Hearing for 5/19/20)

**RECOMMENDED MOTION:** That the Board of Supervisors:

1. Introduce, read title and waive further reading of proposed Ordinance No. 779.21, an amendment to Ordinance No. 779, relating to County Solid Waste Facilities and Establishing Fees; and
2. Direct the Clerk of the Board to set the public hearing on May 19, 2020 for the proposed ordinance amendment changes to be heard and to publish a notice of public hearing date of May 19, 2020 and the Department of Waste Resources (Department) fees pursuant to Government Code Section 6066.

**ACTION:** Policy, Set for Hearing

  
Hans Kemkamp, General Manager - Chief Engineer 4/9/2020


---

**MINUTES OF THE BOARD OF SUPERVISORS**

On motion of Supervisor Jeffries, seconded by Supervisor Washington and duly carried by unanimous vote, IT WAS ORDERED that the above matter is approved as recommended; Ordinance No. 779.21 is approved as introduced and is set for hearing on Tuesday, May 19, 2020 at 9:30 a.m. or as soon as possible thereafter.

Ayes: Jeffries, Spiegel, Washington, Perez and Hewitt  
Nays: None  
Absent: None  
Date: April 21, 2020  
xc: Waste, COB

Kecia R. Harper  
Clerk of the Board

By:   
Deputy

**SUBMITTAL TO THE BOARD OF SUPERVISORS COUNTY OF RIVERSIDE,  
STATE OF CALIFORNIA**

<b>FINANCIAL DATA</b>	<b>Current Fiscal Year:</b>	<b>Next Fiscal Year:</b>	<b>Total Cost:</b>	<b>Ongoing Cost</b>
<b>COST</b>	\$ 0	\$ 0	\$ 0	\$ 0
<b>NET COUNTY COST</b>	\$ 0	\$ 0	\$ 0	\$ 0
<b>SOURCE OF FUNDS: N/A</b>			<b>Budget Adjustment:</b>	No
			<b>For Fiscal Year:</b>	20/21

**C.E.O. RECOMMENDATION:** Approve

**BACKGROUND:**

**Summary**

In addition to establishing fees and penalties, Ordinance No. 779 includes the basis for operating regulations that include waste inspection, salvaging and safety. In order to verify that the current refuse rates are appropriate to offset expenses, the Department prudently reviews its operations annually and forecasts capital improvements, expansion projects, and future expenses and liabilities with a projection of 20 years. Since revenue from in-county tonnage delivered to the landfills represents the majority of the Enterprise Fund's total revenue, it is important to accurately project future tonnage growth or decline. In the last seven years, tonnage has increased slightly by an average of 3.7% annually. Based on tonnage totals through the first six months of FY 19/20, the Department projects that tonnage totals will stabilize or slightly decrease due to stricter regulatory compliance requirements focused on increased landfill diversion. The Department proposes to increase landfill disposal fees by the percentage change in Consumer Price Index (CPI) for the new Riverside-San Bernardino-Ontario index for the 12 month period ending January 2020, which is calculated to be 3.03%.

Additionally, in order to lessen the amount of blown litter and debris from vehicles traveling to the landfills, the Department proposes to increase the existing fee for uncovered loads from \$10.00 to \$25.00 per load for all scaled sites (Lamb Canyon, Badlands, El Sobrante, and Blythe). Pursuant to California Vehicle Code 23115, all vehicles transporting garbage shall be covered in a manner to prevent the load from spilling or falling from the vehicle. Over the past year, the Department has assessed 3,527 customers with uncovered load fees and it is suspected that the low fee is not sufficient to deter landfill users from transporting waste to the landfill uncovered. Therefore, the Department proposes to increase the uncovered load fee to further incentivize landfill customers to cover waste loads. The Department will consider future increases should the proposed rates not result in anticipated compliance. For comparison, San Bernardino County doubles the disposal fee for uncovered loads.

The Department continues to pilot the operation of a Materials Reuse Store at the Lamb Canyon Landfill. The program will divert recyclable waste streams for reuse. Until full program costs are defined, the Department proposes to charge fees consistent with the value of these commodities. Proposed rates are based on commodity pricing received by the Department in CY2018, plus a \$6.25 per item surcharge for staff time involved in sorting, inspecting and storing material for sale. The Department will continue to pilot the operation of a Materials Reuse program to identify additional program costs.



**SUBMITTAL TO THE BOARD OF SUPERVISORS COUNTY OF RIVERSIDE,  
STATE OF CALIFORNIA**

In FY 17/18, the Department began to gradually increase the rate for processed green waste used as Alternative Daily Cover (ADC) to equal the disposal rate between then and FY 20/21. In the 1990's after passage of AB 939, the Department began using processed green waste as ADC which allowed for jurisdictions to report this tonnage as diverted waste. This practice also helped to extend the life of landfills because the landfill space that would have otherwise been consumed by clean fill dirt was now occupied by the processed green waste that was previously part of the landfilled waste stream. The Department offered discounted fees to create incentives for landfill users to deliver processed green waste that could be used as ADC. At that time, the Department accepted processed green waste for the purpose of ADC at no charge. In 2009, at the urging of private composting operators, the Department began charging \$10.00/ton for this material in an effort to direct this material to private composting facilities. To reduce the amount of organics being landfilled, the State passed into law AB 1826, requiring businesses to begin diverting organics. The State also passed into law AB 1594, which will preclude jurisdictions from counting green waste used as ADC as diverted tonnage when calculating their AB 939 per capita diversion amount. Assembly Bill 1594 eliminated the diversion benefit in 2020 and ADC placed in the landfill will now be counted as disposal. Currently the Department accepts processed green waste for ADC at \$32.00/ton.

In 2014, the Department began a pilot composting program at the Lamb Canyon landfill in order to divert organic material arriving at the landfill from disposal. The Department continues to pilot the program to determine how best to manage the waste stream and find end uses for the product while serving the best interest of the public. In an effort to determine if clean green material versus mixed green material will result in reduced handling/processing costs, the department proposes to incentivize customers by establishing a *clean green waste* rate (less than 1% contamination) of \$36.74, \$5.00 less than the proposed routine refuse rate. This rate is proposed to incentivize customers to separate green waste material from trash before it is brought to the landfill. This material will require less processing and will be processed at the Department's compost facility. Once sufficient operating cost data is gathered over time, the Department will set a rate based on those costs while taking into account fluctuating market conditions associated with green waste as a commodity. Fees for clean green waste at other composting facilities in the area range from \$30 to \$35/ton.

Appendix A – Waste Disposal Fees proposed rates:

<b>Proposed Fee/Rate</b>	<b>Current Fee/ Rate</b>	<b>Amount of Change</b>	<b>% Change</b>
1. Direct Haul/Non-Contracted Rate for Routine Refuse \$41.74/ton	\$40.51/ton	\$1.23	3.03%
2. Hard to Handle Refuse Rate \$55.67/ton	\$54.03/ton	\$1.64	3.03%
3. Clean Green Waste (Less than 1% contamination) Lamb Canyon Landfill Only \$36.74/ton	NA	\$36.74	100%

**SUBMITTAL TO THE BOARD OF SUPERVISORS COUNTY OF RIVERSIDE,  
STATE OF CALIFORNIA**

Proposed Fee/Rate	Current Fee/ Rate	Amount of Change	% Change
<b>4. Minimum Load Fees</b>			
a) Routine Refuse \$10.25 (.5 tons or less)	\$10.00	\$0.25	2.50%*
b) Hard to Handle \$14.50 (.5 tons or less)	\$14.00	\$0.50	3.57%*
c) Mixed Green Waste \$14.50 (.5 tons or less)	\$14.00	\$0.50	3.57%*
d) Clean Green Waste (Lamb Canyon Landfill Only) \$9.00 (.5 tons or less)	NA	\$9.00	100%
*Rounded to nearest \$0.25			
<b>5. Surcharge Fees</b>			
a) Passenger/light duty tires from residential customers only. No semi-truck tires. Limited to 5 tires per residential customer per day. \$2.00/tire	\$2.00/tire	\$0.00	0%
b) Uncovered Load Fee \$25.00/load	\$10.00/load	\$15.00	150%
c) Per ton for mixed green waste loads \$10.30/ton	\$10.00/ton	\$0.30	3.03%
d) Incidental Out Of County Refuse \$5.15/ton	\$5.00	\$0.15	3.03%
e) Surcharge rate per appliance requiring special handling (including but not limited to washer, dryer, refrigerator, stove, water heater, air conditioner, microwave). Limited to four appliances per day. \$4.50	NA	\$4.50	100%
<b>6. No Charge Loads:</b>			
a) Any vehicle hauling 2 or less loads of large trash bags, or			
b) Up to 2 cathode ray tubes (CRT) devices) per visitor per day, or			
c) Up to 3 holiday trees for recycling per residential customer through the second weekend following the Christmas holiday, or			
d) Material preapproved by the General Manager-Chief Engineer or Designee as needed for Beneficial Reuse or,	N/A	N/A	N/A
e) Up to 2 mattresses/box springs per residential customer per day			

**SUBMITTAL TO THE BOARD OF SUPERVISORS COUNTY OF RIVERSIDE,  
STATE OF CALIFORNIA**

<b>Proposed Fee/Rate</b>	<b>Current Fee/ Rate</b>	<b>Amount of Change</b>	<b>% Change</b>
7. Emergency Towing Services			
a) 10 minutes or less \$20	\$20.00	N/A	N/A
b) Over 10 minutes \$35	\$35.00	N/A	N/A
8. Late Staying Customers			
a) Every 15 minutes past closing \$60	\$60.00	N/A	N/A
9. Erosion Control Material \$10.00	\$10.00	\$0.00	N/A
10. Very Small Quantity Generator Waste (a.k.a. Conditionally Exempt Small Quantity Generator Waste) - Fees based on a Pass Through of the Departments Contracted Household Hazardous Waste Disposal Fee Added To 1.49% Of the Hourly Rate Of Staff Involved In Waste Disposal	N/A	N/A	N/A
11. Recycled Material Fees:			
a) Mixed metal items \$.05/lb.	\$.07/lb.	(\$0.02/lb.)	(29%)
b) Flat screen televisions with serial no. \$.20/lb.	\$.19/lb.	\$.01	5%
c) Flat Screen Televisions without serial no. \$.30/lb.	\$.30/lb.	N/A	N/A
d) Projection television \$.18/lb.	\$.18/lb.	N/A	N/A
e) Cathode Ray Tube (CRT) television \$.20/lb.	\$.20/lb.	N/A	N/A
f) Recycled Material Handling Fee Per Item \$6.25/item	\$6.20/item	\$.05/item	1%

Appendix B – Residential Self – Haul Cards: Proposed rate increase limited to CPI of 3.03%, addition of uncovered load fee, addition of \$2.00/tire fee for residential tires.

<b>Proposed Fee/Rate</b>	<b>Current Fee/ Rate</b>	<b>Amount of Change</b>	<b>% Change</b>
Monthly Residential Rural Site - Self Haul Card \$15.93/month	\$15.46	\$0.47	3.03%
Advance Sale – Annual Rural Site – Self Haul Card \$159.26	\$154.58	\$4.68	3.03%

**SUBMITTAL TO THE BOARD OF SUPERVISORS COUNTY OF RIVERSIDE,  
STATE OF CALIFORNIA**

Appendix C – Rural Site Access – Commercial Card: Proposed rate increase limited to CPI of 3.03%, addition of uncovered load fee.

<b>Proposed Fee/Rate</b>	<b>Current Fee/ Rate</b>	<b>Amount of Change</b>	<b>% Change</b>
Monthly Commercial Rural Site Card \$500.86	\$486.13	\$14.73	\$3.03%

Appendix D – Schedule of Miscellaneous Fees: Worm bin kit cost decrease proposed to cover current cost of replacement. The Department proposes to add a surcharge to process credit/debit card payments for landfill transactions processed by telephone at the request of the customer. Customers are expected to provide payment at the landfill in the form of cash, credit/debit card, or department account. However, for various reasons, occasionally customers arrive to the landfill without a form of payment. They may contact their company or family member who will provide a credit/debit card for payment by telephone. When this occurs, Gate Service Attendants (GSA) contact the business office and office staff intervene to obtain credit/debit card information from the paying party and then exchange transactional information with the GSA at the landfill in order to process the payment. Once the payment is processed, the GSA emails a copy of the receipt to the office so that office staff can email a copy to the credit card holder. Customers are advised that this is a one-time exception to policy, and the transaction is logged in a spreadsheet. These transactions average 15 minutes processing time and the proposed rate is set to capture the cost of office staff time not normally engaged in Gate Fee operations.

<b>Proposed Fee/Rate</b>	<b>Current Fee/ Rate</b>	<b>Amount of Change</b>	<b>% Change</b>
Landfill Credit/Debit Telephone Surcharge \$10.95	NA	\$10.95	100%
Sale of Worm Bin Kit \$25	\$26	(\$1.00)	(3.85%)

**Impact on Residents and Businesses**

Waste Disposal Fees are reviewed annually, and are subject to CPI adjustment which, for this period, is 3.03%. Modest fee increases are needed in order to offset impacts due to inflationary factors while meeting the need for capital improvements, and expansion projects, which allow for the continued protection of the general public health and welfare by efficient management of Riverside County's solid waste system. The Waste Disposal Fees charged under Ordinance 779.21 are the lowest in the Southern California region, and the Department does not anticipate an increase in illegal dumping, nor impacts to residents or businesses.

**ATTACHMENT A.** Ordinance 779.21 with Appendices A-D and Exhibit 1

SUBMITTAL TO THE BOARD OF SUPERVISORS COUNTY OF RIVERSIDE,  
STATE OF CALIFORNIA



Jason Farin, Senior Management Analyst

4/15/2020



Gregory V. Priamos, Director County Counsel

4/14/2020

# THE PRESS-ENTERPRISE

DATE	ORDER NUMBER	PONumber	PRODUCT	SIZE	Amount
5/30/20	0011387163		PE Riverside	8 x 294 Li	3,057.60

*Department of  
 Waste Resources  
 Item 12.1 of 5/19/20*

Placed by: Hannah Lumanauw

## Legal Advertising Memo Invoice

BALANCE DUE
3,057.60

SALES/CONTACT INFORMATION	ADVERTISER INFORMATION			
	BILLING DATE	BILLED ACCOUNT NUMBER	ADVERTISER/CLIENT NUMBER	ADVERTISER/CLIENT NAME
Carla Asmundson 626-962-8811	05/30/2020	5209148	5209148	BOARD OF SUPERVISORS



**THE PRESS-ENTERPRISE**  
**Legal Advertising Memo Invoice**

PLEASE DETACH AND RETURN THIS PORTION WITH YOUR REMITTANCE

ADVERTISER/CLIENT NAME		
BOARD OF SUPERVISORS		
BILLING DATE	BILLED ACCOUNT NUMBER	ADVERTISER/CLIENT NUMBER
05/30/2020	5209148	5209148
BALANCE DUE	ORDER NUMBER	TERMS OF PAYMENT
3,057.60	0011387163	DUE UPON RECEIPT

BILLING ACCOUNT NAME AND ADDRESS

REMITTANCE ADDRESS

BOARD OF SUPERVISORS  
 COUNTY OF RIVERSIDE  
 'PO BOX 1147'  
 RIVERSIDE, CA 92502

CALIFORNIA NEWSPAPER PARTNERSHIP  
 dba The Press-Enterprise  
 PO Box 65210  
 Colorado Springs, CO 80962-5210

# THE PRESS-ENTERPRISE

Ad Copy:

1825 Chicago Ave, Suite 100  
Riverside, CA 92507  
951-684-1200  
951-368-9018 FAX

## PROOF OF PUBLICATION (2010, 2015.5 C.C.P)

Publication(s): The Press-Enterprise

PROOF OF PUBLICATION OF

Ad Desc.: /

I am a citizen of the United States. I am over the age of eighteen years and not a party to or interested in the above entitled matter. I am an authorized representative of THE PRESS-ENTERPRISE, a newspaper in general circulation, printed and published daily in the County of Riverside, and which newspaper has been adjudicated a newspaper of general circulation by the Superior Court of the County of Riverside, State of California, under date of April 25, 1952, Case Number 54446, under date of March 29, 1957, Case Number 65673, under date of August 25, 1995, Case Number 267864, and under date of September 16, 2013, Case Number RIC 1309013; that the notice, of which the annexed is a printed copy, has been published in said newspaper in accordance with the instructions of the person(s) requesting publication, and not in any supplement thereof on the following dates, to wit:

**05/30/2020**

I certify (or declare) under penalty of perjury that the foregoing is true and correct.

Date: May 30, 2020  
At: Riverside, California



Legal Advertising Representative, The Press-Enterprise

BOARD OF SUPERVISORS  
COUNTY OF RIVERSIDE  
PO BOX 1147  
RIVERSIDE, CA 92502

Ad Number: 0011387163-01

P.O. Number:

BOARD OF SUPERVISORS OF THE COUNTY OF RIVERSIDE, STATE OF CALIFORNIA  
**ORDINANCE NO. 779.21**  
**AN ORDINANCE OF THE COUNTY OF RIVERSIDE AMENDING ORDINANCE NO. 779 RELATING TO COUNTY SOLID WASTE FACILITIES AND ESTABLISHING FEES**

The Board of Supervisors of the County of Riverside ordains as follows:  
**Section 1. ATTACHMENTS.** Section 11, of Ordinance No. 779 is amended to read as follows:  
 "Section 11. ATTACHMENTS. The following attachments as referenced above in this Ordinance are attached hereto and by this reference incorporated herein:  
**APPENDIX A:** Appendix A to the Riverside County Ordinance No. 779.21 Schedule of Waste Disposal Fees for Riverside County Department of Waste Resources  
**APPENDIX B:** Appendix B to Ordinance No. 779.21 Residential Self-Haul Cards and Other Fees- Oasis Landfill for Riverside County Department of Waste Resources  
**APPENDIX C:** Appendix C to Ordinance No. 779.21 Rural Site Access - Commercial Cards - Oasis Landfill for Riverside County Department of Waste Resources  
**APPENDIX D:** Appendix D to Ordinance No. 779.21 Schedule of Miscellaneous Fees for Riverside County Department of Waste Resources  
**EXHIBIT 1:** Rural Site Service Area #1 & Rural Site Service Area #2"  
**Section 2. EFFECTIVE DATE.** This ordinance shall take effect thirty (30) days after its adoption.

**APPENDIX A TO RIVERSIDE COUNTY ORDINANCE NO. 779.21**  
**SCHEDULE OF WASTE DISPOSAL FEES**  
**FOR**  
**RIVERSIDE COUNTY DEPARTMENT OF WASTE RESOURCES**  
 Effective July 1, 2020

The following gate fees will be applicable at El Sobrante, Barlans, Lamb Canyon, and Blythe Landfills

WASTE GROUP DESCRIPTIONS	RATE
<b>1. Direct Haul/Non-Contracted Rate for Routine Refuse:</b>	
a) Cars/UV	\$41.74 /ton*
b) Van, Pick-up Trucks, Pick-up Trucks w/ Trailer	\$41.74 /ton*
c) Non-contract Commercial Vehicles	\$41.74 /ton*
<b>2. Hard to Handle Rate:</b>	
a) Applied to All End Dump Vehicles	\$55.67 /ton*
b) Applied to Any Load Requiring Immediate Burial or Special Handling	\$55.67 /ton*
<b>3. Clean Green Waste (less than 1% contamination)</b> (Lamb Canyon Landfill Only)	\$36.74 /ton*
<b>4. Minimum Load Fees:</b>	
a) Routine Refuse (net disposal load weight of 0.5 tons or less)	\$10.25 /load*
b) Mixed Green Waste Loads (net disposal load weight of 0.5 tons or less)	\$14.50 /load*
c) Hard to Handle Loads (net disposal load weight of 0.5 tons or less)	\$14.50 /load*
d) Clean Green Waste (less than 1% contamination) (net disposal load weight of 0.5 tons or less)	\$9.00 /load*
<b>5. Surcharges (added to the charges listed herein):</b>	
a) Passenger/light Duty Tires From Residential Customers Only. No semi tires. Limited to 5 Tires Per Residential Customer Per Day.	\$2.00 /tire
b) For Uncovered Load of Refuse Which Has Exposed Material Which in the Opinion of the General Manager/Chief Engineer or his/her Designee May Interfere with the Landfill or Along Landfill Roads to the Dumping Pad.	\$25.00 /load
c) Mixed Green Waste Loads	\$10.20 /ton*
d) Incidental Out of County Refuse	\$5.16 /ton**
e) Surcharge rate per appliance requiring special handling (including but not limited to washer, dryer, refrigerator, stove, water heater, air conditioner, microwave). Limited to four appliances per customer per day.	\$4.50 /item
<b>6. No Charge Loads:</b>	
a) Any Residential customer hauling 2 or less large trash bags per day.	No Charge
b) Up to 2 Cathode Ray Tube (CRT) Devices (e.g. TVs or computer monitors) Per Residential Customer Per Day.	No Charge
c) Up to 3 Holiday Trees for Recycling/Composting Per Residential Customer Through the Second Weekend Following The Christmas Holiday.	No Charge
d) Material Pre-Approved By The General Manager/Chief Engineer Or Designee As Needed For Beneficial Re-use (concrete/tephal or wet weather, etc.)	No Charge
e) Up to 2 mattresses/box springs per residential customer per day.	No Charge
<b>7. Emergency Towing Services:</b>	
a) 15 Minutes or Less	\$20.00
b) Over 15 Minutes	\$35.00
<b>8. Late Staying Customer Fee:</b>	
a) Every 15 Minutes Past Closing	\$60.00
*Arrival to pay window (outbound)	

**APPENDIX A TO RIVERSIDE COUNTY ORDINANCE NO. 779.21**  
**SCHEDULE OF WASTE DISPOSAL FEES**  
**FOR**  
**RIVERSIDE COUNTY DEPARTMENT OF WASTE RESOURCES**  
 Effective July 1, 2020

The following gate fees will be applicable at El Sobrante, Barlans, Lamb Canyon, and Blythe Landfills

WASTE GROUP DESCRIPTIONS	RATE
<b>9. Erosion Control Material:</b> Any vehicle hauling processed green waste approved by the General Manager/Chief Engineer or designee as needed for beneficial re-use (Erosion Control) and spread by County.	\$10.00 /ton*
<b>10. Very Small Quantity Generator Wastes (i.e., Conditionally Exempt Small Quantity Generator Wastes) - Fees based on a Fee Through of the Department's Contracted Household Hazardous Waste Disposal Fee Allocated to 14% of the hourly rate of staff involved in waste disposal.</b>	varies*
<b>11. Recycled Materials Fees (sale of items):</b>	
a) Mixed Metal Items	\$0.25 /pound*
b) Flat Screen Television with serial no.	\$0.20 /pound*
c) Flat Screen Television without serial no.	\$0.30 /pound*
d) Projection Television	\$0.18 /pound*
e) Cathode Ray Tube (CRT) Television	\$0.20 /pound*
f) Recycled Material Handling Surcharge Fee Per Item	\$6.25 /item
<b>Restrictions:</b>	
1) Four (4) Appliances Limit Per Residential Customer Per Day. No Commercial/Business Appliances Accepted.	
2) Five (5) Tires Per Residential Customer Per Day. No semi tires. No Commercial/Business Tire Loads Accepted.	
3) Two (2) Mattresses Per Residential Customer Per Day. No Commercial/Business Mattress Loads Accepted.	
<b>Definitions:</b>	
1) Clean Green Waste - Acceptable: bushes, tree trimmings, grass clippings	
2) Unacceptable: sod, soil, cactus, yucca, tumbleweeds, lumber/wood, concrete, glass, plastic, metal, trash, palm fronds.	
3) Mixed Green Waste - Green waste with greater than 1% contamination of unacceptable material.	
<b>NOTES:</b>	
1) Rate for Transfer Trucks determined by individual contracts.	
2) Loads of dead sheep or small calves from the Blythe service area separated from other waste will be received at no charge at the Blythe Landfill (daily from Bam to Bam) due to health and safety risk in the vast open rangeland in the area.	
3) Certified loads of legally dumped nonhazardous municipal solid waste retrieved along open flowing irrigation canals, which are delivered by the agency responsible for maintaining the canals shall be received at no charge at the Blythe Landfill.	
4) The General Manager/Chief Engineer is authorized to recoup costs associated with the segregation of unauthorized waste commingled with routine refuse.	
* Cash customers provided the nearest \$0.25	
** Exception - El Sobrante Landfill, Incidental Out of County (OOC) rate established by Waste Management, Inc.	

**APPENDIX B TO ORDINANCE NO. 779.21**  
**RESIDENTIAL SELF-HAUL CARDS AND OTHER FEES-OASIS LANDFILL**  
**FOR**  
**RIVERSIDE COUNTY DEPARTMENT OF WASTE RESOURCES**  
 Effective July 1, 2020

The Residential Self-Haul Card shall be necessary for admittance to the Oasis Landfill for all residential haulers. For use by residents of Oasis, Mecca, North Shore, and Thermal.

**RESIDENTIAL CARD REGULATIONS:**  
 Authority: Riverside County Ordinance No. 657 requires that, "Every tenant, occupier, operator or owner of a residence... shall not less than once a week, cause to be removed all solid waste created, produced or brought upon the property to an approved disposal facility."

- Number of Uses** - Monthly Residential Self-Haul Card allows up to 4-400 lb. standard load uses per month.
- Expiration Date** - The expiration date for the yearly card is the last day of the fiscal year, June 30th. The expiration date for monthly cards is the last day of the month. In addition, any unused punches for each month will expire on the last day of that month.
- No Refunds** - There will be no refunds on partially used cards.
- Standard Load** - The maximum load allowed access to the landfill with one use of the Residential Self-Haul Card will be four hundred (400) pounds, which is equivalent to one punch on the card. If the Gate Services Assistant judges a load to be over this Standard Load limit, two or more punches will be made to the card.
- Cost** - The Residential Self-Haul Card discounted rate is fifteen dollars and ninety three cents (\$15.93) per month.
- Payment Options - Cards may be purchased:**

Period	Cost	Number of Punches One Punch Per 400 lb. Standard Load. Additional Punches Applied in Excess of Standard Load.
Monthly	\$15.93	4
Advance Sale - Annual (purchased on or before June 30th)	\$159.26	52 (400 lb. maximum load per punch)
Multiple Months	\$15.93 mo. of months	4x no. of months

- Last Cards** - Last cards are to be reported immediately. The customer will not be responsible for unauthorized use of a card after it is reported lost to the Waste Resources business office located at 14310 Fredrick St., Moreno Valley, CA 92551, (951) 486-3200.
- Restrictions on Use of Card** - Household hazardous waste, other hard-to-handle waste, or commercial business waste will not be accepted on this card. Card may only be used by persons residing at the purchaser's address on file.
- Alternative Riverside County Landfill Usage** - In the event that the rural landfill is unable to accept waste on a normal operating day customers will be directed to a scaled Riverside County landfill and may use their Residential Self-Haul Card.

**APPENDIX C TO ORDINANCE NO. 779.21**  
**RURAL SITE ACCESS - COMMERCIAL CARDS - OASIS LANDFILL**  
**FOR**  
**RIVERSIDE COUNTY DEPARTMENT OF WASTE RESOURCES**  
 Effective July 1, 2020

The Rural Site Access Commercial Card shall be necessary for admittance to the Oasis Landfill for all non-residential contracted entities hauling commercial waste. For use by commercial entities of Oasis, Mecca, North Shore, and Thermal.

**COMMERCIAL CARD REGULATIONS:**

A Rural Site Access Commercial Card provides for disposal of commercial waste generated within the remote service area and is required unless a permitted waste hauler or other large commercial users have negotiated a separate contract for disposal access to rural landfills with the County.

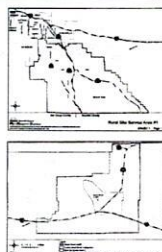
- Number of Uses** - The Commercial Card will have twenty-four (24) 1/2 ton available uses.
- Expiration Date** - There is no expiration date for the Commercial Card.
- No Refunds** - If a commercial operator goes out of business, there shall be no refund for the unused card punches.
- Cost** - The Commercial Card will be priced at five hundred dollars and eighty-six cents (\$500.86).
- Payment for Card** - The card shall be purchased in advance of usage. Cards may be purchased at any time of the year. Acceptable forms of payment at the fee booth include money order or cashier's check, Cash, personal/business checks, and credit/debit card payments are accepted at the Department's business office or by phone (951) 486-3200.
- Last Cards** - Last cards are to be reported immediately. The customer will not be responsible for unauthorized use of a card after it is reported lost to the Waste Resources business office located at 14310 Fredrick St., Moreno Valley, CA, (951) 486-3200.
- Restrictions on Use of Card** - Hazardous waste, tires, or other hard-to-handle waste will not be accepted at the Oasis landfill from commercial haulers.
- Alternative Riverside County Landfill Usage** - In the event that the rural landfill is unable to accept waste on a normal operating day customers will be directed to a scaled Riverside County landfill and may use their Rural Site Commercial Card.

**APPENDIX D TO RIVERSIDE COUNTY ORDINANCE NO. 779.21**  
**SCHEDULE OF MISCELLANEOUS FEES**  
**FOR**  
**RIVERSIDE COUNTY DEPARTMENT OF WASTE RESOURCES**  
 Effective July 1, 2020

Document Name	Document Fee	Mailing/Handling Cost
Countywide Integrated Waste Management Plan (CIWMP)	\$60.00	\$10.00
Source Reduction and Recycling Element (SRRE) and Household Hazardous Waste Element (HHWE)	\$60.00	\$10.00
Nonlandfill Facility Element (NDFE)	\$18.00	\$5.00
Countywide Disposal Tonnage Tracking System (CDTS) Procedure Manual	\$50.00	\$10.00
<b>Copy Service (Note: all map copies are no load unless special request is made. Extra charge for special materials.)</b>		<b>Copy Fee</b>
Plotter/Printer-Map Copies		
Size D		\$4.50
8-1/2" X 11"		.15 per side
8-1/2" X 14"		.15 per side
11" X 17"		.30 per side
Other Copies		
8-1/2" X 11"		\$1 per side
8-1/2" X 14"		\$1 per side
11" X 17"		\$2 per side
Request for Extra Ticket Copies	10/page w/ \$1.00 minimum	
Request for Extra Billing Statement Copies	10/page w/ \$1.00 minimum	
Requests for Document Copies in Electronic Format (e.g., CD)	\$5.75/doc + \$2.25 for postage & mailer	
<b>OTHER FEES</b>		
<b>Service</b>		<b>Fee</b>
Replacement of Self-Haul or Rural Site Access Cards		\$10.00
Cards Ordered After Initial Setup of a Deferred Billing Account or Sub-Account		\$3.00 each
Replacement Access Cards for Deferred and Pre-paid Account Holders		\$3.00 each
Setup Fee for Each Deferred Billing Account		\$50.00
Setup Fee for Each Deferred Billing Sub-Account		\$25.00
Administrative Charge for Delinquent Deferred Account Payment		1-1/2% per billing period on unpaid balance if payment is not made within 15 days from billing.
Checks Returned for Non-Sufficient Funds (NSF)		\$20.00 per occurrence
Account Correction Due to Hauler Resulting From Driver Error Fee (Commercial Hauler Error Resulting in Voided and Corrected Ticket; Due to the Driver Providing Incorrect Information at Time of Transaction (i.e. Incorrect Account Number, Misidentified Refuse Type, etc.)		\$25.00 per occurrence
Late Ticket Submittals as Discussed in the CDTS Procedure Manual		\$25.00 per day
Credit/Debit Card Transaction Fee		percentage of transaction fee per County of Riverside Resolution No. 2019-128
Landfill Transaction Credit/Debit Processing by Telephone Surcharge		\$10.95

**APPENDIX D TO RIVERSIDE COUNTY ORDINANCE NO. 779.21**  
**SCHEDULE OF MISCELLANEOUS FEES**  
**FOR**  
**RIVERSIDE COUNTY DEPARTMENT OF WASTE RESOURCES**  
 Effective July 1, 2020

Basic Hourly Rates for Services Rendered	Actual Hourly Cost of Personnel
Departmental Overhead Rate applied to Basic Hourly Rates	49%
Special FAX Requests for Accounts Receivable	\$3.00 for the 1st page \$1.00 for each additional page
Special Accounts Receivable Research Requests	No charge within 30 days of statement date; \$2.75/yr for if requested past 30 days
Sale of Orange Polyester Safety Vest to Landfill Visitors	\$9.00
Sale of Orange Safety Vest to Landfill Visitors	\$9.75
Sale of Compact Bins to Riverside County Residents Only	Geobin - \$12.00
Sale of Worm Bin Kit	\$25.00
Load-A-Bin Program Fee (must provide a valid credit/debit card at time of bin is loaned)	
(a) Replacement Fee	\$64.95
(b) Cleaning Fee	\$12.00
(c) Late Fee	\$13.00



I HEREBY CERTIFY that at a regular meeting of the Board of Supervisors of said County held on May 19, 2020, the foregoing Ordinance consisting of two (2) sections was adopted by said Board by the following vote:

AYES: Soergel, Washington, Perez, and Hewitt  
 NAYS: Jeffers  
 ABSENT: None

Kacia R. Lopez, Clerk of the Board  
 By: Hannah Lumbauer, Board Assistant





PROOF OF PUBLICATION

STATE OF CALIFORNIA SS.  
COUNTY OF RIVERSIDE

RIVERSIDE COUNTY – BOARD OF SUP.  
4080 LEMON ST  
RIVERSIDE, CA 92501

I am over the age of 18 years old, a citizen of the United States and not a party to, or have interest in this matter. I hereby certify that the attached advertisement appeared in said newspaper (set in type not smaller than non pariel) in each and entire issue of said newspaper and not in any supplement thereof on the following dates, to wit:

5/1/20, 5/8/20

I acknowledge that I am a principal clerk of the printer of The Desert Sun, printed and published weekly I the City of Palm Springs, County of Riverside, State of California. The Desert Sun was adjudicated a Newspaper of general circulation on March 24, 1988 by the Superior Court of the County of Riverside, State of California Case No. 191236.

I certify under penalty of perjury, under the laws of the State of California, that the foregoing is true and correct. Executed on this 22th of May 2020 in Green Bay, Wisconsin, County of Brown

*Jana Karitz*  
DECLARANT

Ad#: 0000467819  
P O: ORD No. 779.21  
# of Affidavits: 1

Dept. of Waste Resources  
Item 12.1 of 5/19/20

NOTICE OF PUBLIC HEARING BEFORE THE BOARD OF RIVERSIDE COUNTY

NOTICE IS HEREBY GIVEN that a public hearing at which persons will be heard, will be held before the Board of Riverside County, California, on the 1st Floor Board Chamber, Administrative Center, 4080 Lemon Street, Riverside, CA 92501, on **19, 2020 at 9:30 a.m., or as soon as possible thereafter** for the adoption of the following:

ORDINANCE NO. 779.21  
AN ORDINANCE OF THE COUNTY OF RIVERSIDE  
AMENDING ORDINANCE NO. 779 RELATIVE TO  
COUNTY SOLID WASTE FACILITIES AND ESTABLISHMENTS

The Board of Supervisors of the County of Riverside hereby amends Section 1. ATTACHMENTS. Section 11. of Ordinance No. 779.21 as amended to read as follows:

“Section 11. ATTACHMENTS. The following attachments referenced above in this Ordinance are attached hereto and their reference incorporated herein:

- APPENDIX A:** Appendix A to the Riverside County Ordinance No. 779.21 Schedule of Waste Disposal Fees for Riverside County Department of Waste Resources
- APPENDIX B:** Appendix B to Ordinance No. 779.21 Residential Self-Haul Cards and Other Landfill for Riverside County Department of Waste Resources
- APPENDIX C:** Appendix C to Ordinance No. 779.21 Rural Site Access – Commercial Cards for Riverside County Department of Waste Resources
- APPENDIX D:** Appendix D to Ordinance No. 779.21 Schedule of Miscellaneous Fees for Riverside County Department of Waste Resources
- EXHIBIT 1:** Rural Site Service Area #2”

Section 2. EFFECTIVE DATE. This ordinance shall take effect (30) days after its adoption.

APPENDIX A TO RIVERSIDE COUNTY ORDINANCE NO. 779.21 SCHEDULE OF WASTE DISPOSAL FEES FOR RIVERSIDE COUNTY DEPARTMENT OF WASTE RESOURCES Effective July 1, 2020
The following gate fees will be applicable at El Sobrante, Badlands, Lamb Canyon, and Blythe Landfills
WASTE GROUP DESCRIPTIONS

RECEIVED  
CLERK/BOARD OF

2020 JUN - 1 AM 11:0

Any vehicle hauling processed green waste approved by the General Manager or Chief Engineer or designee as needed for beneficial re-use (Erosion Control) spread by County.

10. **Very Small Quantity Generator Waste (a.k.a. Conditionally Exempt Small Quantity Generator Waste)** - Fees based on a Pass Through of the Department Contracted Household Hazardous Waste Disposal Fee Added To 1.49% of the hourly rate of staff involved in waste disposal.

11. **Recycled Materials Fees (sale of items):**

- a) Mixed Metal Items
- b) Flat Screen Television with serial no.
- c) Flat Screen Television without serial no.
- d) Projection Television
- e) Cathode Ray Tube (CRT) Television
- f) Recycled Material Handling Surcharge Fee Per Item

**Restrictions:**

- 1.) Four (4) Appliance Limit Per Residential Customer Per Day. No Commercial/Business Appliance Loads Accepted
- 2.) Five (5) Tires Per Residential Customer Per Day. No semi tires. No Commercial/Business Tire Loads Accepted.
- 3.) Two (2) Mattresses Per Residential Customer Per Day. No Commercial/Business Mattress Loads Accepted.

**Definitions**

- 1.) Clean Green Waste
  - a) Acceptable: bushes, tree trimmings, grass clippings
  - b) Unacceptable: sod, soil, cactus, yucca, tumbleweeds, lumber/wood, conc trash, palm fronds.
- 2.) Mixed Green Waste - Green waste with greater than 1% contamination of u

**NOTES:**

- 1) Rate for Transfer Trucks determined by individual contracts.
- 2) Loads of dead sheep or small calves from the Blythe service area separated received at no charge at the Blythe Landfill (daily from 8am to 9am) due to the vast open canal system in the area.
- 3) Certified loads of illegally dumped nonhazardous municipal solid waste retrieved from irrigation canals, which are delivered by the agency responsible for maintaining canals, received at no charge at the Blythe Landfill.
- 4) The General Manager-Chief Engineer is authorized to recoup costs associated with unauthorized waste commingled with routine refuse.
- \* Cash customers prorated to the nearest \$0.25
- \*\* Exception - El Sobrante Landfill. Incidental Out of County (OOC) rate established by Waste Management, Inc.

Alternative formats available upon request to individuals who require reasonable accommodation, please contact Clerk of the Board at (951) 955-1063, 72 hours prior to hearing.

Please send all written correspondence to: Clerk of the Board, 1st Floor, Post Office Box 1147, Riverside, CA 92501  
cob@rivco.org

Dated: April 23, 2020

Kecia R. Harper, Clerk of the Board  
By: Karen Barton, Deputy Clerk of the Board

**NOTICE OF PUBLIC HEARING BEFORE THE BOARD OF SUPERVISORS  
OF RIVERSIDE COUNTY**

NOTICE IS HEREBY GIVEN that a public hearing at which all interested persons will be heard, will be held before the Board of Supervisors of Riverside County, California, on the 1st Floor Board Chambers, County Administrative Center, 4080 Lemon Street, Riverside, on **Tuesday, May 19, 2020 at 9:30 a.m., or as soon as possible thereafter**, to consider adoption of the following:

**ORDINANCE NO. 779.21  
AN ORDINANCE OF THE COUNTY OF RIVERSIDE  
AMENDING ORDINANCE NO. 779 RELATING TO  
COUNTY SOLID WASTE FACILITIES AND ESTABLISHING FEES**

The Board of Supervisors of the County of Riverside ordains as follows:  
Section 1. ATTACHMENTS. Section 11. of Ordinance No. 779 is amended to read as follows:

"Section 11. ATTACHMENTS. The following attachments as referenced above in this Ordinance are attached hereto and by this reference incorporated herein:

**APPENDIX A:** Appendix A to the Riverside County Ordinance No. 779.21 Schedule of Waste Disposal Fees for Riverside County Department of Waste Resources

**APPENDIX B:** Appendix B to Ordinance No. 779.21 Residential Self-Haul Cards and Other Fees – Oasis Landfill for Riverside County Department of Waste Resources

**APPENDIX C:** Appendix C to Ordinance No. 779.21 Rural Site Access – Commercial Cards – Oasis Landfill for Riverside County Department of Waste Resources

**APPENDIX D:** Appendix C to Ordinance No. 779.21 Schedule of Miscellaneous Fees for Riverside County Department of Waste Resources

**EXHIBIT 1:** Rural Site Service Area #1 & Rural Site Service Area #2"

Section 2. EFFECTIVE DATE. This ordinance shall take effect thirty (30) days after its adoption.

APPENDIX A TO RIVERSIDE COUNTY ORDINANCE NO. 779.21 SCHEDULE OF WASTE DISPOSAL FEES FOR RIVERSIDE COUNTY DEPARTMENT OF WASTE RESOURCES Effective July 1, 2020	
The following gate fees will be applicable at El Sobrante, Badlands, Lamb Canyon, and Blythe Landfills	
WASTE GROUP DESCRIPTIONS	RATE
9. <b>Erosion Control Material:</b> Any vehicle hauling processed green waste approved by the General Manager-Chief Engineer or designee as needed for beneficial re-use (Erosion Control) and spread by County.	\$ 10.00 /ton*
10. <b>Very Small Quantity Generator Waste (a.k.a. Conditionally Exempt Small Quantity Generator Waste)</b> - Fees based on a Pass Through of the Departments Contracted Household Hazardous Waste Disposal Fee Added To 1.49% of the hourly rate of staff involved in waste disposal.	varies*
11. <b>Recycled Materials Fees (sale of items):</b>	
a) Mixed Metal Items	\$ 0.05 /pound*
b) Flat Screen Television with serial no.	\$ 0.20 /pound*
c) Flat Screen Television without serial no.	\$ 0.30 /pound*
d) Projection Television	\$ 0.18 /pound*
e) Cathode Ray Tube (CRT) Television	\$ 0.20 /pound*
f) Recycled Material Handling Surcharge Fee Per Item	\$ 6.25 /item
<b>Restrictions:</b>	
1.) Four (4) Appliance Limit Per Residential Customer Per Day. No Commercial/Business Appliance Loads Accepted.	
2.) Five (5) Tires Per Residential Customer Per Day. No semi tires. No Commercial/Business Tire Loads Accepted.	
3.) Two (2) Mattresses Per Residential Customer Per Day. No Commercial/Business Mattress Loads Accepted.	
<b>Definitions</b>	
1.) Clean Green Waste	
a) Acceptable: bushes, tree trimmings, grass clippings	
b) Unacceptable: sod, soil, cactus, yucca, tumbleweeds, lumber/wood, concrete, glass, plastic, metal, trash, palm fronds.	
2.) Mixed Green Waste - Green waste with greater than 1% contamination of unacceptable material.	
<b>NOTES</b>	
1) Rate for Transfer Trucks determined by individual contracts.	
2) Loads of dead sheep or small calves from the Blythe service area separated from other waste will be received at no charge at the Blythe Landfill (daily from 8am to 9am) due to health and safety risk in the vast open canal system in the area.	
3) Certified loads of illegally dumped nonhazardous municipal solid waste retrieved along open flowing irrigation canals, which are delivered by the agency responsible for maintaining the canals shall be received at no charge at the Blythe Landfill.	
4) The General Manager-Chief Engineer is authorized to recoup costs associated with the segregation of unauthorized waste commingled with routine refuse.	
* Cash customers prorated to the nearest \$0.25	
** Exception - El Sobrante Landfill. Incidental Out of County (OOC) rate established by Waste Management, Inc.	

Alternative formats available upon request to individuals with disabilities. If you require reasonable accommodation, please contact Clerk of the Board at (951) 955-1063, 72 hours prior to hearing.

Please send all written correspondence to: Clerk of the Board, 4080 Lemon Street, 1st Floor, Post Office Box 1147, Riverside, CA 92502-1147 or email [cob@rivco.org](mailto:cob@rivco.org)

Dated: April 23, 2020  
Kecia R. Harper, Clerk of the Board  
By: Karen Barton, Deputy Clerk of the Board



OFFICE OF THE  
CLERK OF THE BOARD OF SUPERVISORS  
1st FLOOR, COUNTY ADMINISTRATIVE CENTER  
P.O. BOX 1147, 4080 LEMON STREET  
RIVERSIDE, CA 92502-1147  
PHONE: (951) 955-1060 FAX: (951) 955-1071

**KECIA R. HARPER**  
Clerk of the Board of Supervisors

**KIMBERLY A. RECTOR**  
Assistant Clerk of the Board

April 23, 2020

PRESS ENTERPRISE  
ATTN: LEGALS  
P.O. BOX 792  
RIVERSIDE, CA 92501

E-MAIL: [legals@pe.com](mailto:legals@pe.com)  
TEL: 951-368-9225

RE: INTRODUCTION OF ORDINANCE NO. 779.21

To Whom It May Concern:

Attached is a copy for publication in your newspaper for **TWO (2) TIMES** on **Friday, May 1, 2020** and **Friday, May 8, 2020**.

We require your affidavit of publication immediately upon completion of the last publication.

Your invoice must be submitted to this office in duplicate, **WITH TWO CLIPPINGS OF THE PUBLICATION**.

NOTE: PLEASE COMPOSE THIS PUBLICATION INTO A SINGLE COLUMN FORMAT.

Thank you in advance for your assistance and expertise.

Sincerely,

*Karen Barton*  
Deputy Clerk of the Board to  
KECIA R. HARPER, CLERK OF THE BOARD



OFFICE OF  
CLERK OF THE BOARD OF SUPERVISORS  
1<sup>ST</sup> FLOOR, COUNTY ADMINISTRATIVE CENTER  
P.O. BOX 1147, 4080 LEMON STREET  
RIVERSIDE, CA 92502-1147  
PHONE: (951) 955-1060  
FAX: (951) 955-1071

KECIA R. HARPER  
Clerk of the Board of Supervisors

KIMBERLY A. RECTOR  
Assistant Clerk of the Board

April 23, 2020

THE DESERT SUN  
ATTN: LEGALS  
P.O. BOX 2734  
PALM SPRINGS, CA 92263

E-MAIL: [legals@thedesertsun.com](mailto:legals@thedesertsun.com)  
TEL: (760)778-4578

RE: NOTICE OF PUBLIC HEARING: Introduction of Ordinance No. 779.21

To Whom It May Concern:

Attached is a copy for publication in your newspaper for **TWO (2) TIMES** on **Friday, May 1, 2020** and **Friday, May 8, 2020**.

We require your affidavit of publication immediately upon completion of the last publication.

Your invoice must be submitted to this office, WITH TWO CLIPPINGS OF THE PUBLICATION.

NOTE: PLEASE COMPOSE THIS PUBLICATION INTO A SINGLE COLUMN FORMAT.

Thank you in advance for your assistance and expertise.

Sincerely,

*Karen Barton*

Deputy Clerk of the Board to:  
KECIA R. HARPER, CLERK OF THE BOARD

**NOTICE OF PUBLIC HEARING BEFORE THE BOARD OF SUPERVISORS OF RIVERSIDE COUNTY**

NOTICE IS HEREBY GIVEN that a public hearing at which all interested persons will be heard, will be held before the Board of Supervisors of Riverside County, California, on the 1<sup>st</sup> Floor Board Chambers, County Administrative Center, 4080 Lemon Street, Riverside, on **Tuesday, May 19, 2020 at 9:30 a.m., or as soon as possible thereafter**, to consider adoption of the following:

ORDINANCE NO. 779.21  
**AN ORDINANCE OF THE COUNTY OF RIVERSIDE**  
**AMENDING ORDINANCE NO. 779 RELATING TO**  
**COUNTY SOLID WASTE FACILITIES AND ESTABLISHING FEES**

The Board of Supervisors of the County of Riverside ordains as follows:

Section 1. ATTACHMENTS. Section 11. of Ordinance No. 779 is amended to read as follows:

“Section 11. ATTACHMENTS. The following attachments as referenced above in this Ordinance are attached hereto and by this reference incorporated herein:

**APPENDIX A: Appendix A to the Riverside County Ordinance No. 779.21 Schedule of Waste Disposal Fees for Riverside County Department of Waste Resources**

**APPENDIX B: Appendix B to Ordinance No. 779.21 Residential Self-Haul Cards and Other Fees – Oasis Landfill for Riverside County Department of Waste Resources**

**APPENDIX C: Appendix C to Ordinance No. 779.21 Rural Site Access – Commercial Cards – Oasis Landfill for Riverside County Department of Waste Resources**

**APPENDIX D: Appendix C to Ordinance No. 779.21 Schedule of Miscellaneous Fees for Riverside County Department of Waste Resources**

**EXHIBIT 1: Rural Site Service Area #1 & Rural Site Service Area #2”**

Section 2. EFFECTIVE DATE. This ordinance shall take effect thirty (30) days after its adoption.

**INSERT ATTACHMENTS**

Alternative formats available upon request to individuals with disabilities. If you require reasonable accommodation, please contact Clerk of the Board at (951) 955-1063, 72 hours prior to hearing.

Please send all written correspondence to: Clerk of the Board, 4080 Lemon Street, 1<sup>st</sup> Floor, Post Office Box 1147, Riverside, CA 92502-1147 or email [cob@rivco.org](mailto:cob@rivco.org)

Dated: April 23, 2020

Kecia R. Harper, Clerk of the Board  
By: Karen Barton, Deputy Clerk of the Board



PROOF OF PUBLICATION

STATE OF CALIFORNIA SS.  
COUNTY OF RIVERSIDE

RIVERSIDE COUNTY – BOARD OF SUP.  
4080 LEMON ST  
RIVERSIDE, CA 92501

I am over the age of 18 years old, a citizen of the United States and not a party to, or have interest in this matter. I hereby certify that the attached advertisement appeared in said newspaper (set in type not smaller than non pariel) in each and entire issue of said newspaper and not in any supplement thereof on the following dates, to wit:

5/1/20, 5/8/20

I acknowledge that I am a principal clerk of the printer of The Desert Sun, printed and published weekly I the City of Palm Springs, County of Riverside, State of California. The Desert Sun was adjudicated a Newspaper of general circulation on March 24, 1988 by the Superior Court of the County of Riverside, State of California Case No. 191236.

I certify under penalty of perjury, under the laws of the State of California, that the foregoing is true and correct. Executed on this 22th of May 2020 in Green Bay, Wisconsin, County of Brown

*Jana Karitz*  
DECLARANT

Ad#: 0000467819  
P O: ORD No. 779.21  
# of Affidavits: 1

*Dept. of Waste Resources  
Item 12.1 of 5/19/20*

NOTICE OF PUBLIC HEARING BEFORE THE BOARD OF RIVERSIDE COUNTY

NOTICE IS HEREBY GIVEN that a public hearing at which persons will be heard, will be held before the Board of Riverside County, California, on the 1st Floor Board Chamber, Administrative Center, 4080 Lemon Street, Riverside, CA 92501, on **May 19, 2020 at 9:30 a.m., or as soon as possible thereafter** for the adoption of the following:

ORDINANCE NO. 779.21  
**AN ORDINANCE OF THE COUNTY OF RIVERSIDE AMENDING ORDINANCE NO. 779 RELATING TO COUNTY SOLID WASTE FACILITIES AND ESTABLISHMENTS**

The Board of Supervisors of the County of Riverside California, do hereby amend Section 11, ATTACHMENTS. Section 11. of Ordinance No. 779, as amended to read as follows:

“Section 11. ATTACHMENTS. The following attachments referenced above in this Ordinance are attached hereto and by reference incorporated herein:

- APPENDIX A:** Appendix A to the Riverside County Ordinance No. 779.21 Schedule of Waste Disposal Fees for Riverside County Department of Waste Resources
- APPENDIX B:** Appendix B to Ordinance No. 779.21 Residential Self-Haul Cards and Other Landfill for Riverside County Department of Waste Resources
- APPENDIX C:** Appendix C to Ordinance No. 779.21 Rural Site Access – Commercial Cards for Riverside County Department of Waste Resources
- APPENDIX D:** Appendix D to Ordinance No. 779.21 Schedule of Miscellaneous Fees for Riverside County Department of Waste Resources
- EXHIBIT 1:** Rural Site Service Area Service Area #2”

Section 2. EFFECTIVE DATE. This ordinance shall take effect (30) days after its adoption.

APPENDIX A TO RIVERSIDE COUNTY ORDINANCE NO. 779.21 SCHEDULE OF WASTE DISPOSAL FEES FOR RIVERSIDE COUNTY DEPARTMENT OF WASTE RESOURCES Effective July 1, 2020	
The following gate fees will be applicable at El Sobrante, Badlands, Lamb Canyon, and Blythe Landfills	
WASTE GROUP DESCRIPTIONS	
9. Erosion Control Material:	Any vehicle hauling processed green waste approved by the General Manager, Chief Engineer or designee as needed for beneficial re-use (Erosion Control) spread by County.
10. Very Small Quantity Generator Waste (aka Conditionally Exempt Small Quantity Generator Waste)	

**NOTICE OF PUBLIC HEARING BEFORE THE BOARD OF SUPERVISORS  
OF RIVERSIDE COUNTY**

NOTICE IS HEREBY GIVEN that a public hearing at which all interested persons will be heard, will be held before the Board of Supervisors of Riverside County, California, on the 1st Floor Board Chambers, County Administrative Center, 4080 Lemon Street, Riverside, on **Tuesday, May 19, 2020 at 9:30 a.m.**, or as soon as possible thereafter, to consider adoption of the following:

**ORDINANCE NO. 779.21**  
**AN ORDINANCE OF THE COUNTY OF RIVERSIDE**  
**AMENDING ORDINANCE NO. 779 RELATING TO**  
**COUNTY SOLID WASTE FACILITIES AND ESTABLISHING FEES**

The Board of Supervisors of the County of Riverside ordains as follows:  
**Section 1.** ATTACHMENTS. Section 11. of Ordinance No. 779 is amended to read as follows:

"Section 11. ATTACHMENTS. The following attachments as referenced above in this Ordinance are attached hereto and by this reference incorporated herein:

- APPENDIX A:** Appendix A to the Riverside County Ordinance No. 779.21 Schedule of Waste Disposal Fees for Riverside County Department of Waste Resources
- APPENDIX B:** Appendix B to Ordinance No. 779.21 Residential Self-Haul Cards and Other Fees – Oasis Landfill for Riverside County Department of Waste Resources
- APPENDIX C:** Appendix C to Ordinance No. 779.21 Rural Site Access – Commercial Cards – Oasis Landfill for Riverside County Department of Waste Resources
- APPENDIX D:** Appendix C to Ordinance No. 779.21 Schedule of Miscellaneous Fees for Riverside County Department of Waste Resources
- EXHIBIT 1:** Rural Site Service Area #1 & Rural Site Service Area #2"

**Section 2.** EFFECTIVE DATE. This ordinance shall take effect thirty (30) days after its adoption.

<b>APPENDIX A TO RIVERSIDE COUNTY ORDINANCE NO. 779.21 SCHEDULE OF WASTE DISPOSAL FEES FOR RIVERSIDE COUNTY DEPARTMENT OF WASTE RESOURCES Effective July 1, 2020</b>	
The following gate fees will be applicable at El Sobrante, Badlands, Lamb Canyon, and Blythe Landfills	
<b>WASTE GROUP DESCRIPTIONS</b>	<b>RATE</b>
<b>9. Erosion Control Material:</b> Any vehicle hauling processed green waste approved by the General Manager-Chief Engineer or designee as needed for beneficial re-use (Erosion Control) and spread by County.	\$ 10.00 /ton*
<b>10. Very Small Quantity Generator Waste (a.k.a. Conditionally Exempt Small Quantity Generator Waste) -</b> Fees based on a Pass Through of the Departments Contracted Household Hazardous Waste Disposal Fee Added To 1.49% of the hourly rate of staff involved in waste disposal.	varies*
<b>11. Recycled Materials Fees (sale of items):</b>	
a) Mixed Metal Items	\$ 0.05 /pound*
b) Flat Screen Television with serial no.	\$ 0.20 /pound*
c) Flat Screen Television without serial no.	\$ 0.30 /pound*
d) Projection Television	\$ 0.18 /pound*
e) Cathode Ray Tube (CRT) Television	\$ 0.20 /pound*
f) Recycled Material Handling Surcharge Fee Per Item	\$ 6.25 /item
<b>Restrictions:</b>	
1.) Four (4) Appliance Limit Per Residential Customer Per Day. No Commercial/Business Appliance Loads Accepted	
2.) Five (5) Tires Per Residential Customer Per Day. No semi tires. No Commercial/Business Tire Loads Accepted.	
3.) Two (2) Mattresses Per Residential Customer Per Day. No Commercial/Business Mattress Loads Accepted.	
<b>Definitions</b>	
1.) Clean Green Waste	
a) Acceptable: bushes, tree trimmings, grass clippings	
b) Unacceptable: sod, soil, cactus, yucca, tumbleweeds, lumber/wood, concrete, glass, plastic, metal, trash, palm fronds.	
2.) Mixed Green Waste - Green waste with greater than 1% contamination of unacceptable material.	
<b>NOTES</b>	
1) Rate for Transfer Trucks determined by individual contracts.	
2) Loads of dead sheep or small calves from the Blythe service area separated from other waste will be received at no charge at the Blythe Landfill (daily from 8am to 9am) due to health and safety risk in the vast open canal system in the area.	
3) Certified loads of illegally dumped nonhazardous municipal solid waste retrieved along open flowing irrigation canals, which are delivered by the agency responsible for maintaining the canals shall be received at no charge at the Blythe Landfill.	
4) The General Manager-Chief Engineer is authorized to recoup costs associated with the segregation of unauthorized waste commingled with routine refuse.	
* Cash customers prorated to the nearest \$0.25	
** Exception - El Sobrante Landfill. Incidental Out of County (OOC) rate established by Waste Management, Inc.	

Alternative formats available upon request to individuals with disabilities. If you require reasonable accommodation, please contact Clerk of the Board at (951) 955-1063, 72 hours prior to hearing.

Please send all written correspondence to: Clerk of the Board, 4080 Lemon Street, 1st Floor, Post Office Box 1147, Riverside, CA 92502-1147 or email [cob@rivco.org](mailto:cob@rivco.org)

Dated: April 23, 2020                      Kecia R. Harper, Clerk of the Board  
By: Karen Barton, Deputy Clerk of the Board





PROOF OF PUBLICATION

STATE OF CALIFORNIA SS.
COUNTY OF RIVERSIDE

RIV COUNTY OF TRANSPORTATION
4080 LEMON ST. FL 3
RIVERSIDE, CA 92501

I am over the age of 18 years old, a citizen of the United States and not a party to, or have interest in this matter. I hereby certify that the attached advertisement appeared in said newspaper (set in type not smaller than non pariel) in each and entire issue of said newspaper and not in any supplement thereof on the following dates, to wit:

6/3/20

I acknowledge that I am a principal clerk of the printer of The Desert Sun, printed and published weekly I the City of Palm Springs, County of Riverside, State of California. The Desert Sun was adjudicated a Newspaper of general circulation on March 24, 1988 by the Superior Court of the County of Riverside, State of California Case No. 191236.

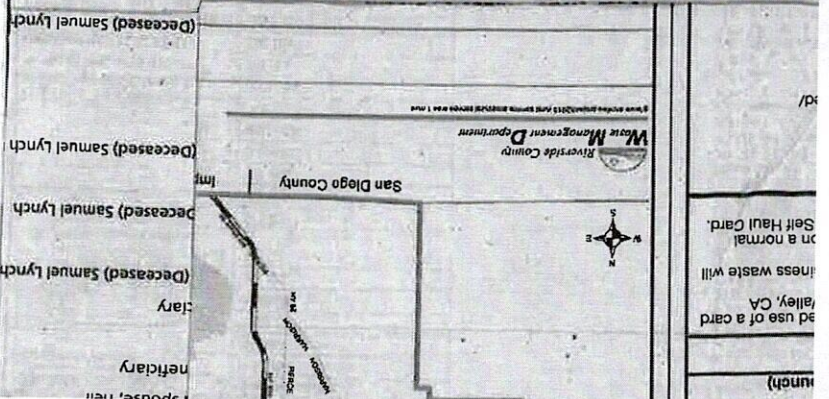
I certify under penalty of perjury, under the laws of the State of California, that the foregoing is true and correct. Executed on this 18th of June 2020 in Green Bay, Wisconsin, County of Brown

Jana Kanitz
DECLARANT
Dept. of Waste Resources

Item 12.1 of 05/15/20

Ad#: GC10426096-01 & -02
P O: ORD No. 779.21
# of Affidavits: 1

Table with 11 rows of waste disposal fees and surcharges. Includes categories like Direct Haul, Hard to Handle Rate, Clean Green Waste, Minimum Load Fees, Surcharges, No Charge Loads, Emergency Towing Services, Late Staying Customer Fees, Erosion Control Material, and Recycled Materials Fees.



SCHEDULE OF WASTE DISPOSAL FEES	
FOR RIVERSIDE COUNTY DEPARTMENT OF WASTE RESOURCES Effective July 1, 2020	
The following gate fees will be applicable at El Sobrante, Badlands, Lamb Canyon, and Blythe Landfills	
WASTE GROUP DESCRIPTIONS	RATE
1. Direct Haul/Non-Contracted Rate for Routine Refuse: a) Cars/SUV b) Van, Pick-up Trucks, Pick-up Trucks w/ Trailer c) Non-contracted Commercial Vehicles	\$ 41.74 /ton* \$ 41.74 /ton* \$ 41.74 /ton* \$ 41.74 /ton*
2. Hard to Handle Rate: a) Applied to All End Dump Vehicles b) Applied to Any Load Requiring Immediate Bural or Special Handling	\$ 55.67 /ton* \$ 55.67 /ton*
3. Clean Green Waste (less than 1% contamination) (Lamb Canyon Landfill Only)	\$ 36.74 /ton*
4. Minimum Load Fees: a) Routine Refuse (net disposal load weight of 0.5 tons or less) b) Mixed Green Waste Loads (net disposal load weight of 0.5 tons or less) c) Hard to Handle Loads (net disposal load weight of 0.5 tons or less) d) Clean Green Waste (less than 1% contamination) (net disposal load weight of 0.5 tons or less)	\$ 10.25 /load* \$ 14.50 /load* \$ 14.50 /load* \$ 9.00 /load*
5. Surcharges (added to the charges listed herein): a) Passenger/Light Duty Tires From Residential Customers Only. No semi tires. Limited to 5 Tires Per Residential Customer Per Day. b) Per Uncovered Load of Refuse Which Has Exposed Material Which in the Opinion of the General Manager-Chief Engineer or His/Her Designee May Litter Roadways to the Landfill or Along Landfill Roads to the Dumping Pad. c) Mixed Green Waste Loads d) Incidental Out of County Refuse e) Surcharge rate per appliance requiring special handling (including but not limited to washer, dryer, refrigerator, stove, water heater, air conditioner, microwave). Limited to four appliances per customer per day.	\$ 2.00 /tire \$ 25.00 /load \$ 10.30 /ton* \$ 5.15 /ton** \$ 4.50 /item
6. No Charge Loads: a) Any Residential customer hauling 2 or less large trash bags per day. b) Up to 2 Cathode Ray Tube (CRT) Devices (e.g. TVs or computer monitors) Per Residential Customer Per Day. c) Up to 3 Holiday Trees For Recycling/Composting Per Residential Customer Through The Second Weekend Following The Christmas Holiday. d) Material Pre-Approved By The General Manager-Chief Engineer Or Designee As Needed For Beneficial Re-Use (concrete/asphalt for wet weather, etc). e) Up to 2 mattresses/box springs per residential customer per day.	No Charge
7. Emergency Towing Services: a) 10 Minutes or Less b) Over 10 Minutes	\$ 20.00 \$ 35.00
8. *Late Staying Customer Fees a) Every 15 Minutes Past Closing *Arrival to pay window (outbound)	\$ 60.00
9. Erosion Control Material: Any vehicle hauling processed green waste approved by the General Manager-Chief Engineer or designee as needed for beneficial re-use (Erosion Control and spread by County).	\$ 10.00 /ton
10. Very Small Quantity Generator Waste (a.k.a. Conditionally Exempt Small Quantity Generator Waste) - Fees based on a Pass Through of the Departments Contracted Household Hazardous Waste Disposal Fee Added To 149% of the hourly rate of staff involved in waste disposal.	Varies*
11. Recycled Materials Fees (sale of items): a) Mixed Metal Items b) Flat Screen Television with serial no. c) Flat Screen Television without serial no. d) Projection Television e) Cathode Ray Tube (CRT) Television f) Recycled Material Handling Surcharge Fee Per Item	\$ 0.05 /pound* \$ 0.20 /pound* \$ 0.30 /pound* \$ 0.18 /pound* \$ 0.20 /pound* \$ 5.25 /item
<b>Restrictions:</b> 1.) Four (4) Appliance Limit Per Residential Customer Per Day. No Commercial/Business Appliance Loads Accepted 2.) Five (5) Tires Per Residential Customer Per Day. No semi tires. No Commercial/Business Tire Loads Accepted. 3.) Two (2) Mattresses Per Residential Customer Per Day. No Commercial/Business Mattress Loads Accepted.	
<b>Definitions</b> 1.) Clean Green Waste a) Acceptable: bushes, tree trimmings, grass clippings b) Unacceptable: sod, soil, cactus, yucca, tumbleweeds, lumber/wood, concrete, glass, plastic, metal, trash, palm fronds. 2.) Mixed Green Waste - Green waste with greater than 1% contamination of unacceptable material.	
<b>NOTES:</b> 1) Rate for Transfer Trucks determined by individual contracts. 2) Loads of dead sheep or small calves from the Blythe service area separated from other waste will be received at no charge at the Blythe Landfill (daily from 6am to 3pm) due to health and safety risk in the vast open canal system in the area. 3) Certified loads of legally dumped non-hazardous municipal solid waste retrieved along open flowing irrigation canals, which are delivered by the agency responsible for maintaining the canals shall be received at no charge at the Blythe Landfill. 4) The General Manager-Chief Engineer is authorized to recoup costs associated with the segregation of unauthorized waste commingled with routine refuse. * Cash customers prorated to the nearest \$0.25 ** Exception - El Sobrante Landfill, Incidental Out of County (OOC) rate established by Waste Management, Inc	

APPENDIX B TO ORDINANCE NO. 779.21 RESIDENTIAL SELF-HAUL CARDS and OTHER FEES - OASIS LANDFILL FOR RIVERSIDE COUNTY DEPARTMENT OF WASTE RESOURCES Effective July 1, 2020		
The Residential Self-Haul Card shall be necessary for admittance to the Oasis Landfill for all residential haulers. For use by residents of Oasis, Mecca, North Shore, and Thermal.		
<b>RESIDENTIAL CARD REGULATIONS:</b> Authority: Riverside County Ordinance No. 857 requires that, "Every tenant, occupier, operator, or owner of a residence...shall not less than once a week, cause to be removed all solid waste created, produced or brought upon the property to an approved disposal facility."		
1. <b>Number of Uses</b> - Monthly Residential Self-Haul Card allows up to 4-400 lb, standard load uses per month.		
2. <b>Expiration Date</b> - The expiration date for the yearly card is the last day of the fiscal year, June 30th. The expiration date for monthly cards is the last day of the month. In addition, any unused punches for each month will expire on the last day of that month.		
3. <b>No Refunds</b> - There will be no refunds on partially used cards.		
4. <b>Standard Load</b> - The maximum load allowed access to the landfill with one use of the Residential Self-Haul Card will be four hundred (400) pounds, which is equivalent to one punch on the card, if the Gate Services Assistant judges a load to be over this Standard Load limit, two or more punches will be made to the card.		
5. <b>Cost</b> - The Residential Self-Haul Card discounted rate is fifteen dollars and ninety three cents (\$15.93) per month.		
6. <b>Payment Options</b> - Cards may be purchased		
Period	Cost	Number of Punches One Punch Per 400 lb, Standard Load. Additional Punches Applied in Excess of Standard Load
Monthly	\$15.93	4
Advanced Sale - Annual (purchased on or before June 30th)	\$159.26	52 (400 lb estimated load per punch)
Multiple Months	\$15.93 no. of months	4 x no. of months
7. <b>Lost Cards</b> - Lost cards are to be reported immediately. The customer will not be responsible for unauthorized use of a card after it is reported lost to the Waste Resources business office located at 14310 Frederick Street, Moreno Valley, CA 92553. (951) 486-3200.		
8. <b>Restrictions on Use of Card</b> - Household hazardous waste, other hard-to-handle waste, or commercial business waste will not be accepted on this card. Card may only be used by persons residing at the purchaser's address on file.		
9. <b>Alternative Riverside County Landfill Usage</b> - In the event that the rural landfill is unable to accept waste on a normal operating day, customers will be directed to a scaled Riverside County landfill and may use their Residential Self Haul Card. Payment Options - Cards may be purchased:		

APPENDIX C TO ORDINANCE NO. 779.21 RURAL SITE ACCESS - COMMERCIAL CARDS - OASIS LANDFILL FOR RIVERSIDE COUNTY DEPARTMENT OF WASTE RESOURCES Effective July 1, 2020		
The Rural Site Access Commercial Card shall be necessary for admittance to the Oasis Landfill for all nonpermitted/contracted entities hauling commercial waste. For use by commercial entities of Oasis, Mecca, North Shore, and Thermal.		
<b>COMMERCIAL CARD REGULATIONS:</b> A Rural Site Access Commercial Card provides for disposal of commercial waste generated within the remote service areas and is required unless a permitted waste hauler or other large commercial users have negotiated a separate contract for disposal access to rural landfills with the County.		
1. <b>Number of Uses</b> - The Commercial Card will have twenty-four (24) 1/2 ton available uses.		
2. <b>Expiration Date</b> - There is no expiration date for the Commercial Card.		
3. <b>No Refunds</b> - If a commercial operator goes out of business, there shall be no refund for the unused card punches.		
4. <b>Cost</b> - The Commercial Card will be priced at five hundred dollars and eighty-six cents (\$500.86).		
5. <b>Payment for Card</b> - The card shall be purchased in advance of usage. Cards may be purchased at any time of the year. Acceptable forms of payment at the fee booth include money order or cashier's check. Cash, personal/business checks, and credit/debit card payments are accepted at the Department's business office or by phone (951) 486-3200.		
6. <b>Lost Cards</b> - Lost cards are to be reported immediately. The customer will not be responsible for unauthorized use of a card after it is reported lost to the Waste Resources business office located at 14310 Frederick St., Moreno Valley, CA. (951) 486-3200.		
7. <b>Restrictions on Use of Card</b> - Hazardous waste, tires, or other hard-to-handle waste will not be accepted at the Oasis landfill from commercial haulers.		
8. <b>Alternative Riverside County Landfill Usage</b> - In the event that the rural landfill is unable to accept waste on a normal operating day, customers will be directed to a scaled Riverside County landfill and may use their Rural Site Commercial Card.		

**SCHEDULE OF MISCELLANEOUS FEES  
FOR  
RIVERSIDE COUNTY DEPARTMENT OF WASTE RESOURCES  
Effective July 1, 2020**

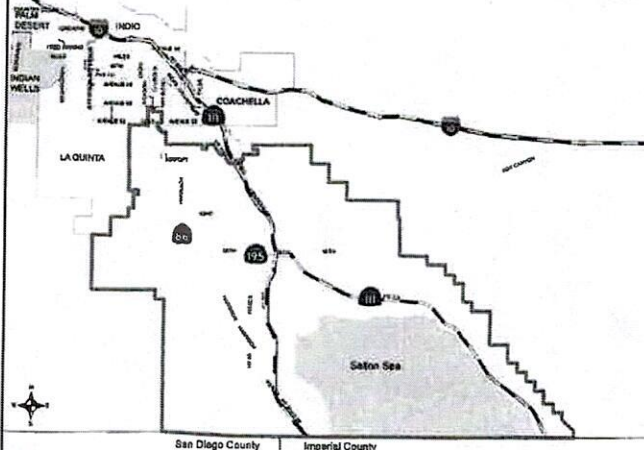
**FEES FOR DEPARTMENT PUBLICATIONS**

Document Name	Document Fee	Mailing/Handling Cost
Countywide Integrated Waste Management Plan (CIWMP)	\$60.00	\$10.00
Source Reduction and Recycling Element (SRRE) and Household Hazardous Waste Element (HHWE)	\$60.00	\$10.00
Non-disposal Facility Element (NDFE)	\$10.00	\$5.00
Countywide Disposal Tonnage Tracking System (CDTTS) Procedure Manual	\$50.00	\$10.00

Copy Service	Copy Fee
<i>Note: all map copies are on bond unless special request is made. Extra charge for special materials</i>	
Plotter Printer Map Copies	
Size D	\$4.50
8-1/2" x 11"	.15 per side
8-1/2" x 14"	.15 per side
11" x 17"	.30 per side
Color Copiers	
8-1/2" x 11"	\$1 per side
8-1/2" x 15"	\$1 per side
11" x 17"	\$2 per side
Request for Extra Ticket Coupons	10¢/page w/ \$1.00 minimum
Request for Extra Billing Statement Copies	10¢/page w/ \$1.00 minimum
Request for Document Copies in Electronic Format (e.g. CO)	\$5.75/disc + \$3.25 for postage & mailer

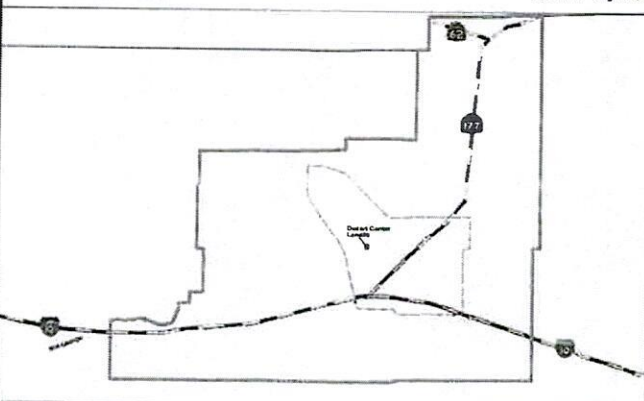
**Other Fees**

Service	Fee
Replacement of Self Haul or Rural Site Access Cards	\$10.00
Cards Ordered After Initial Setup of a Deferred Billing Account or Sub-Account	\$3.00 each
Setup Fee for Each Deferred Billing Account	\$50.00
Setup Fee for Each Deferred Billing Sub-Account	\$25.00
Administrative Charge for Delinquent Deferred Account Payment	1-1/2% per billing period on unpaid balance if payment is not made within 15 days from billing.
Checks Returned for Non-Sufficient Funds (NSF)	\$20.00 per occurrence
Account Correction Due to Hauler Resulting From Driver Error Fee (Commercial Hauler Error Resulting in Voided and Corrected Ticket Due to the Driver Providing Incorrect Information at Time of Transaction (i.e. Incorrect Account Number, Mis-identified Refuse Type, etc.)	\$25.00 per day
Credit/Debit Card Transaction Fee	percentage of transaction fee per County of Riverside Resolution No. 2018-128
Landfill Transaction Credit/Debit Processing by Telephone Surcharge	\$10.95
Basic Hourly Rates for Services Rendered	Actual Hourly Cost of Personnel
Departmental Overhead Rate applied to Basic Hourly Rates	48%
Special FAX Requests for Accounts Receivable	\$3.00 for the 1st page \$1.00 for each additional page
Special Accounts Receivable Research Requests	No charge within 30 days of statement date; \$3.75/qrtr hr if requested past 30 days
Sale of Orange Polyester Safety Vest to Landfill Visitors	\$9.00
Sale of Orange Safety Vest to Landfill Visitors	\$0.75
Sale of Compost Bins to Riverside County Residents Only	Geobin - \$12.00
Sale of Worm Bin Kit	\$25.00
Land-A-Bin Program Fees (must provide a valid credit/debit card at time of bin loan)	
(a) Replacement Fee	\$64.95
(b) Cleaning Fee	\$13.00
(c) Late Fee	\$13.00



**Rural Site Service Area #1**

EXHIBIT 1 Page 1 of 2



**Rural Site Service Area #2**

EXHIBIT 1 Page 2 of 2