

EXHIBIT "B"

DESCRIPTION OF BASIC SERVICES, ADDITIONAL SERVICES AND EXCLUDED SERVICES

- ☒ ☐ (5) **Roof Plans.** Prepare preliminary roof plans, shown against a background of structural gridlines and building dimensions, depicting the major elements of the roofed areas, including, without limitation, major penetrations, penthouses and identification of roof mounted equipment.
- ☒ ☐ (6) **MEP Studies.** Prepare: (a) an outline of alternative mechanical, electrical, plumbing, fire protection, and low voltage systems, preliminary sizing of major mechanical, electrical, plumbing and fire protection equipment and equipment rooms; (b) single line diagrams of mechanical, electrical, plumbing and fire suppression distributions; and (c) identification of special mechanical, electrical, plumbing and fire protection requirements (such as, but not limited to, exhaust requirements, emergency power and fire suppression).
- ☐ ☒ (7) **Life Cycle Costing.** Prepare an analysis of life cycle costs (including, without limitation, capital costs, operating costs, maintenance costs and simple payback analyses) and comparative performance characteristics of each alternative identified in the County's systems selections.
- ☒ ☐ (8) **Preliminary Structural Analysis.** Prepare (a) a preliminary design of the major structural elements for the Project that is coordinated with the requirements of Governmental Authorities and the recommendations of the County's Consultants in the field of geotechnical engineering and, accompanied by recommendations, if any, for additional studies, reports, exploration or testing of the Site or Existing Improvements; (b) foundation and framing (at each level of the building) design Plans, sufficient to permit preliminary cost estimating; and (c) a preliminary report of the dynamic performance of the structural system suitable for the proposed occupancy.
- ☐ ☒ (9) **Elevator Recommendations.** Prepare preliminary recommendations on the number, types, sizes and operational characteristics of elevators.
- ☒ ☐ (10) **Outline Specification.** Prepare an outline Specification covering all technical divisions of the Construction Specifications Institute format, or using such other format acceptable to County.
- ☒ ☐ (11) **Building Code Outline.** Prepare documentation (plans and/or narratives) addressing building codes and similar Applicable Laws which apply to the Project, accompanied by a delineation of key design criteria (such as, but not limited to, exits, travel distances, rated walls and corridors, building occupancy, construction type, and fire zones) required to meet such Applicable Laws.
- ☒ ☐ (12) **Area Calculations.** Prepare (a) square footage area calculations, based upon the Schematic Design Documents approved by County, for use by County in planning, demising and allocating spaces and (b) a comparison of areas in the Schematic Phase Documents to the areas set forth in the Final Program.
- ☒ ☐ (13) **Perspective Drawings.** Prepare one (1) perspective drawings of the Project, as conceptualized in the Schematic Design Documents approved by the County, representing the appearance of the Project from vantage points selected by County.
- ☐ ☒ (14) **Schematic Model.** Prepare, and provide County with, a schematic model (at a minimum scale of 1/16th" = 1'0"), constructed of simple materials such as foam board and hand drawn or pasted cut-outs, depicting in three dimensions the appearance of the building façade as shown in the Schematic Design Documents approved by County.

EXHIBIT "B"

DESCRIPTION OF BASIC SERVICES, ADDITIONAL SERVICES AND EXCLUDED SERVICES

X ☐ (15) **Design Narrative.** Prepare a "basis of design" narrative and documentation supporting the design criteria for the structural elements (including structural loading), mechanical, electrical, plumbing, lighting, low voltage systems and other specialized building systems.

.2 **Estimate of Construction Cost.**

X ☐ (1) Prepare, with the level of due care of a design professional and not a contractor or professional cost estimator, a preliminary written Estimate of Construction Cost based upon the Schematic Design Documents approved by County, including recommendations to County of opportunities for incorporation of design alternatives that will optimize quality and value consistent with the Fixed Limit, Final Program and Master Project Schedule.

X ☐ (2) Review and comment upon the preliminary Estimate of Construction Cost prepared by Contractor or County's Consultant in cost estimating, including recommendations to the County of opportunities for incorporation of design alternatives that will optimize quality and value consistent with the Fixed Limit, Final Program and Master Project Schedule.

.3 **Community Outreach.**

☐ X (1) Participate, as and when requested, in the County's program for outreach to neighborhood residents and their representatives to assess, evaluate and distribute information with respect to matters of community concern (including, without limitation, traffic, parking, view corridors, pedestrian access, public transportation access and paths of travel) and make recommendations to County for revisions to the Program and Schematic Design Documents in order to satisfy the expressed needs of the community.

☐ X (2) Prepare presentation materials (consisting of hand outs, summaries, charts and other appropriate paper and electronic visual aids) for ☐ presentation(s) to community groups designed to develop community consensus on a plan of development that, to the greatest extent possible, satisfies the requirements of the County's Program for the Project, as well as the expressed needs of the community.

X ☐ .4 **Zoning.** Prepare for the County materials, such as, but not limited to, sketches and exhibits, required to secure applicable zoning and architectural committee approvals and zoning variances necessary for the Project.

X ☐ .5 **Project Directory.** Prepare a Project directory stating complete contact information (name, address, telephone (office, home and cellular), fax, email) for each of the Project Team members.

X ☐ .6 **Preliminary Project Specific Water Quality Management Plan.** Prepare for review and approval by the Department of Facilities Management's Design and Construction Division a preliminary project specific Water Quality Management Plan (WQMP) in accordance with the requirements of the applicable and adopted municipal separate storm sewer system (MS4) permit (including, without limitation, any amendments, orders and new permits that the Regional Water Quality Control Boards has issued prior to, or issues after, execution of the Agreement by County and Architect, in connection with preparation of a project-specific WQMP), which permit(s) may include any of the following three (3) MS4 permits applicable within the County of Riverside:

Order No. R8-2002-0011, NPDES No. CAS 61833 adopted by the Santa Ana Regional Water

EXHIBIT "B"

DESCRIPTION OF BASIC SERVICES, ADDITIONAL SERVICES AND EXCLUDED SERVICES

Quality Control Board on October 25, 2002 for the Santa Ana Region.

Order No. R7-2008-0001, NPDES No. CAS 617002 adopted by the Colorado River Basin Regional Water Quality Control Board on May 21, 2008 for the Whitewater River Region.

Order No. R9-2004-001, NPDES No. CAS 108766 adopted by the San Diego Regional Water Quality Control Board on July 14, 2004 for the Santa Margarita Region.

(The aforementioned permits describing the requirements for the WQMP can be provided by the Department of Facilities Management's Design and Construction Division). Architect will prepare the WQMP utilizing the approved template that can be found on Riverside County Flood Control's website at <http://www.floodcontrol.co.riverside.ca.us/> or, upon request, such template can be provided by the Department of Facilities Management's Design and Construction Division. Architect shall include all the necessary exhibits, reports, and data required for the preparation of the WQMP. Architect will make all the necessary revisions that are requested by the County to be made to the preliminary WQMP.

☒ ☐ **.7 Municipal Facility Pollution Prevention Plan.** In accordance with the Riverside County Drainage Area Management Plan (DAMP) and the applicable MS4 permits described in Subparagraph 2.1.3.6, above, Architect shall prepare a Municipal Facilities Pollution Prevention Plan (MFPPP, or 3P). The MFPPP shall be prepared utilizing the approved template found in Appendix J of the Riverside County DAMP. Upon request, the Department of Facilities Management's Design and Construction Division can provide the Architect with the MFPPP template. The MFPPP will include the approved maintenance and inspection requirements of the structural BMPs (e.g. Treatment Control, etc.) identified in the project-specific WQMP. During the preparation of the MFPPP, the Architect, the Department of Facilities Management, and the user department for the County will coordinate inspection, maintenance, and repair responsibility of the BMPs as identified in the MFPPP. A draft MFPPP document will be prepared concurrently with the preliminary project-specific WQMP and will be reviewed by the Department of Facilities Management's Design and Construction Division.

2.1.4 DESIGN DEVELOPMENT PHASE

The Design Development Phase commences upon the end of the Schematic Design Phase and ends upon approval by County of the completed Design Development Documents.

Yes No

☒ ☐ **.1 Design Development Documents.** Prepare, for approval by County, three (3) paper copy sets and an electronic draft of each and all of the Construction Documents, in a form that is: (1) substantially complete; (2) fully dimensioned; and (3) sufficiently developed so as to enable (a) County to obtain detailed, preliminary Contractor and Subcontractor materials take-offs and estimates of Construction Costs for the Project, and (b) Architect and other Project Team members to identify any significant obstacles or difficulties to achieving completion of the Project within the constraints of the Final Program, Fixed Limit, Architect's Project Schedule and Applicable Laws.

☐ ☒ **.2 Estimate of Construction Cost.**

☐ ☒ **(1)** Prepare, with the level of due care of a design professional and not a contractor or professional cost estimator, a detailed written Estimate of Construction Cost based upon the Design Development Documents approved by County, including recommendations to the County of opportunities for incorporation of design alternatives that will optimize quality and value consistent with the Fixed Limit, Final Program and Master Project Schedule.

EXHIBIT "B"

DESCRIPTION OF BASIC SERVICES, ADDITIONAL SERVICES AND EXCLUDED SERVICES

☒ ☐ (2) Review and comment upon the detailed Estimate of Construction Cost prepared by Contractor or County's Consultant in cost estimating based upon the Design Development Documents approved by County, including recommendations to the County of opportunities for incorporation of design alternatives that will optimize quality and value consistent with the Fixed Limit, Final Program and Master Project Schedule.

☒ ☐ .3 **Area Calculations.** Prepare square footage area calculations, based upon the Design Development Documents approved by County, for use by County in planning, demising and allocating spaces.

☒ ☐ .4 **Initial Palette Presentation.** Prepare and conduct an initial, formal presentation to County of Architect's recommendations and alternatives for finish materials and equipment, including acquiring and presenting physical samples of the materials for the exterior building envelope (including, without limitation, cladding, exterior finishes, glazing, trim, ornamental metals and roofing), interior (including, without limitation, finish materials for floors, walls, ceilings, doors, finish hardware, millwork, bathroom fixtures and lighting), wayfinding and signage, and (if the Architect is providing design services related to furniture, furnishings and artwork) furniture, furnishings and artwork.

☐ ☒ .5 **Circulation Plan.** In consultation with County, prepare a plan for providing the entering, exiting and circulation, as appropriate to the planned uses of the Site during construction, of the County's staff, occupants, visitors and public during construction, including, without limitation, pedestrian flow (including, without limitation, access and paths of travel for persons with disabilities), vehicular flow, parking, delivery paths, fire lanes and fire hydrants.

☒ ☐ .6 **Access and Staging Plan.** In consultation with County and its Contractor, prepare a plan showing access and exiting for construction equipment and crews and location for on-Site parking, storage and temporary construction facilities, fencing and temporary barricades.

☐ ☒ .7 **Shoring Plans.** Prepare Drawings delineating design and details for shoring, underpinning or tie backs.

☐ ☒ .8 **Post-Tension Design.** Retain Subconsultant to develop post-tension plans, details, and calculations for the post-tension slab-on-grade foundations.

☐ ☒ .9 **Computer Generated Perspectives.** Prepare and present to the County one (1) computer generated "fly-through(s)" of the exterior and interior perspectives of the structure and primary interior spaces that is (are) based on the Design Development Documents approved by the County.

☒ ☐ .10 **Renderings.** Prepare one (1) rendering(s) depicting, both in black and white and color, two dimensionally and pictorially, the elevation and perspective views of the Project from four (4) directions, professionally prepared by a Subconsultant experienced in preparation of design renderings.

☐ ☒ .11 **Presentation Model.** Prepare ☐ () presentation model(s) professionally prepared by a Subconsultant experienced in display models, in color, and built to a scale of 1/8" = 1'0".

☒ ☐ .12 **Project Directory.** Prepare an updated Project directory.

EXHIBIT "B"

DESCRIPTION OF BASIC SERVICES, ADDITIONAL SERVICES AND EXCLUDED SERVICES

2.1.5 FINAL CONSTRUCTION DOCUMENTS PHASE

The Final Construction Documents Phase commences upon the end of the Design Development Phase and ends upon approval by County of the Final Construction Documents.

Yes No

☒ ☐ .1 **Final Construction Documents.** Prepare, for approval by County, Final Construction Documents that are consistent with the Final Program, the in-progress Construction Documents approved by County during the Design Development Phase, Fixed Limit and the Architect's Project Schedule. Two (2) paper copy set(s) and an electronic version of the Final Construction Documents shall be submitted to County for review and approval at the point that they are (1) 50% complete, (2) 75% complete, (3) ready for submission to Governmental Authorities for plan check, and (4) completed to the point of being Final Construction Documents. Submission of Final Construction Documents shall include three (3) sets of prints of all Drawings, three (3) sets of the Specifications, and one (1) electronic version of all Drawings and Specifications.

☐ ☒ .2 **Stair Plans.** Prepare Drawings, enlarged to a scale of $\frac{1}{4}"=1'0"$, coordinated with structural dimensions, delineating dimensions of risers, treads and landings and that comply with Applicable Laws governing exiting.

☒ ☐ .3 **Fixture and Equipment Schedules.** Prepare schedules for fixtures and equipment, including, without limitation, bathroom fixtures and accessories.

☒ ☐ .4 **Tabulated Schedules.** Prepare schedules for floor, ceiling and wall finishes, doors and windows and related hardware and openings and fixtures and equipment in tabular form by room number, location number and interior elevation.

☐ ☒ .5 **Dynamic Analyses.** Prepare Specifications for dynamic testing and analysis of the following building elements: _____.

☒ ☐ .6 **Window Wall.** Prepare Drawings and Specifications setting forth all of the essential prescriptive and performance criteria necessary for the Contractor to engineer and build an exterior window wall system.

☐ ☒ .7 **Emergency Water Storage System.** Prepare a designed system of water storage for emergency purposes.

☒ ☐ .8 **Fire Protection (Suppression and Detection) Systems.** Prepare fully engineered Drawings and Specifications delineating the fire suppression and detection systems that comply with the requirements of the County's insurance carriers and Applicable Laws, including, without limitation, a layout of the heads and the details of the interface with the fire alarm system and complete information on head end equipment (including, without limitation, annunciator panels, main and subordinate fire alarm annunciator panels, risers, conduit runs, terminal devices and zoning).

☐ ☒ .9 **Elevator System.** Prepare Drawings and Specifications delineating elevator designs, including, without limitation, sizing of shafts, elevator pits and elevator machine rooms, an overall building section of the hoistway, power and lighting requirements for the equipment room and cabs, elevator cab finishes and accessories, and a system for programming operations under normal and emergency conditions (including, without limitation, the interfaces between elevator functions and the fire alarm and security systems).

EXHIBIT "B"

DESCRIPTION OF BASIC SERVICES, ADDITIONAL SERVICES AND EXCLUDED SERVICES

☐ ☒ .10 **Mock-Up Criteria.** Prepare Drawings and Specifications delineating the design criteria for construction and testing of mock-ups for the following elements of the completed design:
_____.

☒ ☐ .11 **Energy Plan.** Prepare a preliminary energy analysis demonstrating that the Project can meet the requirements of Title 24 of the California Code of Regulations, accompanied by a brief energy usage report identifying incorporation of any energy savings devices.

☒ ☐ .12 **Furniture, Furnishings, Artwork.** Prepare Drawings and Specifications delineating: (1) proposed materials, textures and colors for furniture, furnishings and artwork; and (2) placement of furniture, furnishings and artwork on architectural floor plans with an identification key which clearly indicates whether the items will be new, refurbished or reused and cross references for relocated items identifying location prior to and after relocation.

.13 **Estimate of Construction Cost.**

☐ ☒ (1) Prepare, with the level of due care of a design professional and not a contractor or professional cost estimator, detailed written Estimates of Construction Cost based upon and submitted with each of the sets of progressive iterations of the Construction Documents that are required to be submitted by Architect to County pursuant to Subparagraph 2.1.5.1, above, including recommendations to the County of opportunities for incorporation of design alternatives that will optimize quality and value consistent with the Fixed Limit, Final Program and Master Project Schedule

☒ ☐ (2) Review and comment upon the detailed written Estimates of Construction Cost prepared by Contractor or County's Consultant in cost estimating that are based upon each of the sets of progressive iterations of the Construction Documents that are required to be submitted by Architect to County pursuant to Subparagraph 2.1.5.1, above, including recommendations to the County of opportunities for incorporation of design alternatives that will optimize quality and value consistent with the Fixed Limit, Final Program and Master Project Schedule.

☒ ☐ .14 **Area Tabulations.** Prepare tabulations of gross and assignable floor areas and parking counts.

☒ ☐ .15 **Final Palette Presentation.** Prepare and conduct a final, formal presentation to County for its approval of final finish materials and equipment, including acquiring and presenting physical samples of the materials for the exterior building envelope (including, without limitation, cladding, exterior finishes, glazing, trim, ornamental metals and roofing), interior (including, without limitation, finish materials for floors, walls, ceilings, doors, finish hardware, millwork, bathroom fixtures and lighting), wayfinding and signage, and (if the Architect is providing design services related to furniture, furnishings and artwork) furniture, furnishings and artwork.

☒ ☐ .16 **Updated Circulation, Access and Staging Plans.** Prepare an updated version of the Circulation Plan and Access and Staging Plan initially submitted during the Design Development Phase.

☒ ☐ .17 **Project Directory.** Prepare an updated Project directory.

☒ ☐ .18 **Stormwater Pollution Prevention Plan.** Prepare a Stormwater Pollution Prevention Plan (SWPPP) and associated monitoring plan in accordance with the requirements of the State of California General Permit for Stormwater Discharges Associated with Construction Activity (Water Quality Order 99-08-DWQ) and subsequent amendments or orders for construction activities as

EXHIBIT "B"

DESCRIPTION OF BASIC SERVICES, ADDITIONAL SERVICES AND EXCLUDED SERVICES

applicable. The Architect's engineering Subconsultant responsible for such matters shall prepare the Notice of Intent (NOI) and Notice of Termination (NOT) for the applicable Regional Water Quality Control Board and submit to same to the County's project manager. County will mail all Notices to the applicable Regional Water Quality Control Board or the State Water Resource Control Board. In addition and prior to ground disturbing activities (which may include, but are not limited to, clearing, grubbing, weed abatement, trenching, and other types of soil disturbance including grading), such engineering Subconsultant shall ensure that the Contractor's Best Management Practices are installed on-Site in accordance with the approved SWPPP that was prepared for the Project. A copy of the approved SWPPP shall be retained on the Site during the duration of construction. A draft copy of the SWPPP shall be submitted by Architect for review and approval by the County's Department of Facilities Management's Design and Construction Division prior to submittal of the NOI. Any changes requested by the Department of Facilities Management's Design and Construction Division will be implemented by Architect as revisions to the draft SWPPP and shall be re-submitted as a revised draft SWPPP. Upon final approval of the SWPPP, the Department of Facilities Management's Design and Construction Division will mail the NOI.

X ☐ **.19 Final WQMP.** Prepare for review and approval by County's Department of Facilities Management, a final WQMP, including any changes to the preliminary WQMP as County may deem necessary or appropriate and provide two hardcopies of the final WQMP approved by County, along with a digital submission.

X ☐ **.20 Final MFPPP.** Prepare for review and approval by County's Department of Facilities Management's Design and Construction Division, a final MFPPP, including any changes to the preliminary MFPPP as County may deem necessary or appropriate and provide two hardcopies of the final MFPPP approved by County, along with a digital submission.

2.1.6 BIDDING PHASE

The Bidding Phase shall commence upon direction by County for issuance of the Construction Documents to bidders or proposed Contractors or Separate Contractors and ends upon execution of the contracts between County and Contractor and the Separate Contractors for performance of the Work of the entire Project.

Yes No

☐ **X** **.1 Prequalification.** Recommend prequalification criteria, assist in preparation of the prequalification documents and participate in the evaluation of prequalification submittals by proposed Contractors and Separate Contractors.

X ☐ **.2 Addenda.** Prepare and obtain approval by Governmental Authorities of Addenda for issuance to the proposed Contractors and Separate Contractors.

X ☐ **.3 Alternates.** Prepare documentation of alternates, assist County in the ranking of alternates for bidding and assist County in the evaluation of portions of bids or price proposals relating to pricing of alternates.

X ☐ **.4 Substitutions.** Review and evaluate requests by bidders or proposers for substitutions of products or equipment and make recommendations to County for their approval or rejection.

EXHIBIT "B"

DESCRIPTION OF BASIC SERVICES, ADDITIONAL SERVICES AND EXCLUDED SERVICES

☒ ☐ .5 **Pre-Construction Conferences.** Attend, and arrange for necessary Subconsultants to attend, all pre-bid and pre-construction Site visits, tours and conferences conducted for proposed or selected Contractors, Separate Contractors or Subcontractors.

☒ ☐ .6 **Clarifications.** Prepare or secure from the appropriate Project Team member responses to questions by bidders or proposers and promptly forward each question and response to County for distribution.

☒ ☐ .7 **Schedule of Values.** Review the list of the cost items prepared by the selected Contractor and Separate Contractors to be included in the Schedule of Values to assess whether it appears, based upon Architect's review as a design professional and not a contractor or professional estimator, to represent a fair, balanced and reasonable allocation of costs, overhead and profit.

☒ ☐ .8 **Plans & Specifications.** Coordinate the transmittal of all final and complete Construction Documents to the proposed Contractors and Separate Contractors to ensure that the Construction Documents used for bidding are the same as the Final Construction Documents approved by County and stamped and approved by applicable Governmental Authorities. If any differences exist, report them promptly to County.

☐ ☒ .9 **Bid/Proposal Evaluations.** Assist County in the review and evaluation of bids and negotiated proposals for the Work by proposed Contractors, Separate Contractors and Subcontractors.

☐ ☒ .10 **Negotiation of Contracts.** Assist County in the preparation and negotiation of the legal terms and conditions of the Construction Contract between County and the Contractor and the contracts between County and Separate Contractors; provided, however, that County shall remain solely responsible for the legal enforceability and sufficiency of such terms and conditions and provided further, that nothing herein shall be interpreted as authorizing or requiring the Architect to furnish legal advice to County.

☐ ☒ .11 **Multiple and Sequential Bid Packages.** Provide services for the implementation of multiple bid packages and sequential bidding.

☒ ☐ .12 **Long Lead Items.** Identify and recommend to the County a schedule for procurement of long lead time items and assist County in implementing such recommendations.

☒ ☐ .13 **Project Directory.** Prepare an updated Project directory.

2.1.7 CONSTRUCTION PHASE

The Construction Phase commences, following execution of the contract between County and Contractor, upon commencement by Contractor of performance of the Work and ends thirty (30) Days after Final Completion of the entirety of the Work.

Yes No

☒ ☐ .1 **General Obligation.** Unless and except otherwise indicated in this Paragraph 2.1.7, provide all services required by the Agreement or the General Conditions for the administration of the construction by the Contractor and Separate Contractors.

EXHIBIT "B"

DESCRIPTION OF BASIC SERVICES, ADDITIONAL SERVICES AND EXCLUDED SERVICES

X ☐ .2 **Meeting Minutes.** Prepare and distribute preconstruction and construction meeting minutes.

X ☐ .3 **Site Observations.** Observe construction at the Site as it progresses, as and when appropriate to the stage and progress of the Work and the needs of the Project, but not less frequently than monthly, for the purpose of: (1) ascertaining in general that the character, scope, quality and detail of construction (including workmanship and materials) comply with the Contract Documents, County's directives, approved Submittals, Architect clarifications and requirements of Applicable Laws; (2) evaluating the progress of the Work; (3) evaluating the suitability of the Project, or any portion designated by County, for use or occupancy; (4) investigating and responding to design and constructibility issues or questions of concern to any Project Team member, or as noted in any inspection reports furnished to Architect; (5) observing the overall quality of Contractor's performance; (6) reviewing specifically and in detail the visible condition of the construction of structural components, building systems and other crucial components of the Work; and (7) observing the performance of specified or directed tests significant to the acceptability of components of the Work. Such observations shall be separate from any inspections which may be provided by inspectors retained by County, Contractor, Separate Contractors or others and such inspections shall not relieve Architect of its responsibilities under the Agreement. Any Subconsultant who has prepared designs or specifications shall be responsible to conduct such observations, in accordance with the provisions of this Subparagraph, only as to those portions of the Work that he/she has so designed or specified.

X ☐ .4 **Site Observation Reports.** Within three (3) working days after the occurrence of a Site observation by Architect or a Subconsultant, submit to County, in accordance with a format approved in advance by County, a written report detailing the observations made at the Site.

X ☐ .5 **Fabricated Materials.** Check fabricated materials and equipment located on or outside the Site when such checks are required by the Contract Documents.

X ☐ .6 **Applications for Payment.** If and when requested by County, evaluate Applications for Payment by the Contractor and Separate Contractors and the data comprising Applications for Payment and provide recommendations (and, if requested by County, issue certifications using the current Forms G702 and G703 published by the American Institute of Architects or other forms satisfactory to County) as to whether the Work has progressed to the point indicated in such Applications for Payment and whether, to the best of Architect's knowledge based on its periodic observations conducted at the Site, the Work is in accordance with the Contract Documents; provided, however, that any of Architect's recommendations or certifications in that regard are subject to: (1) an evaluation of the Work upon Substantial Completion; (2) the results of subsequent tests and inspections; (3) minor deviations from the Contract Documents correctable prior to Final Completion; and (4) specific qualifications expressed by Architect that are consistent with its obligations under this Agreement.

X ☐ .7 **Substantial Completion, Final Completion.** Accompany and assist County in evaluating (and, if requested by County, issue certifications using the current Form G704 published by the American Institute of Architects or other forms satisfactory to County) Substantial Completion and Final Completion and the status of Contractor's and Separate Contractors' performance of "punch lists" of minor items of Work to be completed or corrected for Substantial Completion and Final Completion and advise the County whether punch list items have been completed in accordance with the requirements of the Contract Documents.

X ☐ .8 **Interpretations.** If requested by County, issue interpretations and clarifications, in narrative form or in the form of revised Drawings or Specifications, as appropriate. Unless otherwise directed by County, such clarifications and interpretations shall be transmitted to the County in writing for distribution, as County deems appropriate, to other designated Project Team members and shall not be

EXHIBIT "B"

DESCRIPTION OF BASIC SERVICES, ADDITIONAL SERVICES AND EXCLUDED SERVICES

communicated to any other Project Team member (other than County) by Architect or its Subconsultants unless approved by County in writing.

X ☐ .9 **Requests for Information.** Architect shall provide responses to requests for information to the County within seven (7) Days after Architect receives such request from Contractor or a Separate Contractor, except that responses to request for information that the Contractor or a Separate Contractor has labeled as "critical" shall be provided within three (3) Days after receipt by Architect. Unless otherwise directed by County, such responses shall be transmitted to the County in writing for distribution, as County deems appropriate, to other designated Project Team members and shall not be communicated to any other Project Team member (other than County) by Architect or its Subconsultants unless approved by County in writing.

X ☐ .10 **Design Changes and Clarifications.** Prepare Drawings and Specifications in connection with the issuance of Construction Change Directives, Change Orders and responses to requests for information by Contractor and Separate Contractors, and where required secure approvals thereof by Governmental Authorities in accordance with Applicable Laws.

X ☐ .11 **Assistance in Evaluation of Changes, Claims.** Provide advice and support to County in evaluating the Contractor's and Separate Contractors' entitlement to additional costs, time extensions and claims and assist County in the resolution thereof.

X ☐ .12 **Tracking of Changes, Claims.** Log, track and issue such reminders to other Project Team members as necessary to expedite processing of Change Orders, Construction Change Directives, responses to requests for information and claims.

X ☐ .13 **Submittals.** Review and approve (or take such other action leading to the correction, resubmittal and ultimate approval by Architect) Submittals for the limited purpose of checking for conformance with the information given in, and the design concept expressed by, the Contract Documents. Architect's action shall be taken with such reasonable promptness, not to exceed in any event fourteen (14) Days, so as to not Delay progress of the Work of the Contractor or the Separate Contractors, while allowing a reasonable time for such professional review. Such review shall not constitute approval of safety precautions or, unless specifically required by the Contract Documents, the Contractor's means, methods, techniques, sequences or procedures. Architect's approval of a specific item shall not indicate approval of an assembly of which the item is a component. When professional certification by a Contractor or a Separate Contractor, or any Subcontractor, of performance characteristics of materials, systems or equipment is required by the Contract Documents, Design Consultant shall be entitled to rely upon such certification to establish that the materials, systems or equipment will meet the performance criteria required by the Contract Documents. Architect shall, if requested by County, log, track and issue such reminders to other Project Team members as necessary to expedite processing of Submittals.

X ☐ .14 **Change Orders, Construction Change Directives.** Provide services for the preparation of revisions in Design Documents in connection with the issuance of Construction Change Directives and Change Orders.

X ☐ .15 **Claims.** Provide services to assist in evaluating claims on the part of the Contractor or a Separate Contractor; provided, however, that nothing herein shall be interpreted as obligating the County to compensate Architect where the claim or any defense to the claim is based, in whole or in part, on an allegation asserted, in good faith, that Architect or a Subconsultant was negligent or that Architect has violated an obligation under this Agreement.

X ☐ .16 **Destruction of Work.** Provide consultation and services concerning replacement

EXHIBIT "B"

DESCRIPTION OF BASIC SERVICES, ADDITIONAL SERVICES AND EXCLUDED SERVICES

of Work damaged during construction by fire or other cause.

.17 Record Documents.

X ☐ (1) Promptly and continuously throughout the Construction Phase, update the Construction Documents to incorporate changes to the Work reflected in Change Orders, Construction Change Directives, Submittal revisions requested by Architect or its Subconsultants and responses by Architect or its Subconsultants to requests for information or clarification from Contractor or Separate Contractors. Such updating shall be accomplished electronically, using AutoCAD, Adobe Acrobat or other software satisfactory to the County. Architect shall transmit the updated Construction Documents to the Contractor or Separate Contractors on a frequent and regular basis, no less frequently than monthly or as often as required to maintain the progress of the Work, to allow for prompt pricing of Changes Orders and to facilitate performance by Contractor and Separate Contractors of their obligations with respect to posting and maintaining Record Drawings and Specifications.

X ☐ (2) Review the Record Documents assembled by the Contractor and Separate Contractors to determine if the assembly is complete and in the form required by the Contract Documents.

X ☐ (3) Review Record Documents submitted by the Contractor and Separate Contractors to determine if the information contained therein is internally consistent and corresponds to the condition of the visible, non-concealed conditions at the Site at the time of Final Completion. If a discrepancy is noted by Architect in the course of its review, return the Record Documents to County with a notation of the discrepancy, who shall coordinate further review and correction by the Contractor or Separate Contractors.

X ☐ (4) Certify in writing that, to the best of Architect's knowledge based upon Architect's review of the visible, non-concealed conditions at the Site and other available as-built information, the Record Drawings and Specifications accurately depict the actual, as-built condition of the Project.

X ☐ (5) Based upon the Record Documents prepared by the Contractor and Separate Contractors and any other information available to Architect concerning the as-built conditions of the Work (including, without limitation, any conditions noted by Architect, Subconsultants or County Consultants during the commissioning), Architect shall within two (2) month(s) after Final Completion, convert the Contractor's and Separate Contractors' complete and corrected Record Documents to a fully consolidated and coordinated final electronic set (using CAD) of Record Documents.. Such Record Documents shall be prepared by Architect's neatly inserting, accurately annotating and thoroughly cross-referencing, in a single, record set of electronically prepared Drawings and Specifications, all of the information available concerning the as-built condition of the Project. Architect shall, upon completion thereof mark each page of the Record Drawings and the cover page of the Record Specifications prominently with: (1) the words "Record Documents"; and (2) the Architect's manual signature certifying that: "Based upon Architect's review of the visible, non-concealed conditions at the Site and other available as-built information, these Drawings and Specifications have been approved by Architect as accurately depicting the actual, as-built condition of the Project."

☐ X **.18 Square Footage Calculations.** Prepare one (1) set of final square footage area calculations after Final Completion of the Project for use by County in planning, demising and allocating spaces for sale or lease.

☐ X **.19 Full-Time Site Representative.** Provide the services of a full-time representative at the Site.

EXHIBIT "B"

DESCRIPTION OF BASIC SERVICES, ADDITIONAL SERVICES AND EXCLUDED SERVICES

☐ X .20 **Site Office.** Provide and maintain a temporary office trailer at the Site.

X ☐ .21 **Mitigation Monitoring and Reporting Program.** In compliance with the California Environmental Quality Act (CEQA), ensure that the Mitigation Monitoring and Reporting Program (MMRP) as part of the CEQA compliance process noted previously in Paragraph 2.1.2.15, above, is implemented prior to and during ground disturbing activities (ground disturbing activities may include, but are not limited to, grading, clearing, grubbing, weed abatement, trenching, equipment staging, and other types of soil disturbance).

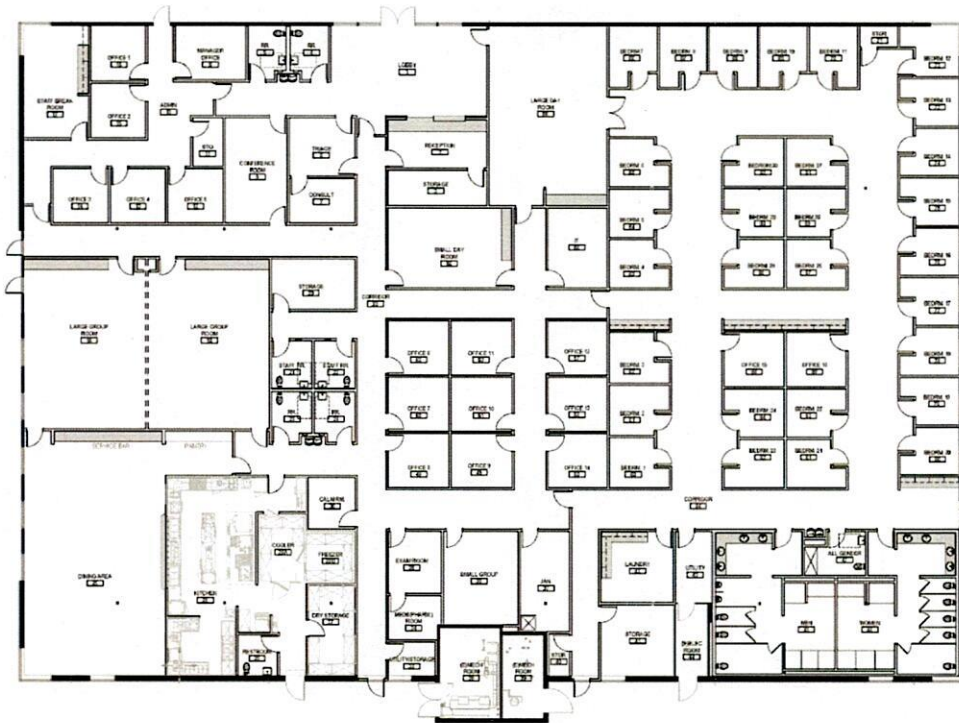
2.1.8 POST-COMPLETION PHASE

Yes No

☐ X Conduct, with participation of each of the Subconsultants, a review of the Project ten (10) months after Final Completion for the purpose of observing the condition in the Work. Within thirty (30) Days after completion of such review, make written recommendations to County for the correction of any Defective Work discovered. Architect shall be accompanied by County during such review of the Work. The number of work hours by Architect and its Subconsultants to complete such review and written recommendations shall not exceed a total of () hours. Hours expended due to conditions encountered that are attributable to the negligence of Architect or its Subconsultants or the failure by Architect to comply with this Agreement shall not be included in the aforementioned calculation of hours and shall be provided at Architect's Own Expense. Hours expended for such services that are in excess of the maximum number of hours stated herein shall, if and to the extent approved in advance in writing by County, be compensated as Additional Services.

EXHIBIT "C"

INITIAL PROGRAM



A. BUILDING ELEMENTS:

- a. Reception and Lobby
- b. (6) Single Occupant Restrooms
- c. (16) Staff Offices
- d. (30) Single Occupant Bedrooms
- e. Storage and Supply Rooms
- f. (1) Single Occupant Shower/Restroom
- g. (2) Large Shared Men/Women Shower/Restrooms.
- h. Staff Administration Area

B. AMENITIES:

- a. Laundry Room
- b. Support Kitchen and Dining Area
- c. (2) Day Room/Lounge Areas
- d. (3) Group Rooms
- e. Triage and Exam Room
- f. (1) Smoking Area
- g. (1) Staff Smoking Area.

C. SPECIAL FEATURES:

- a. Enhanced Exterior Patient Patio Area
- b. Exterior Concrete Walkways and Path of Travel upgrades to edge of property

D. SYSTEM PERFORMANCE CRITERIA:

- a. Updated Interior Lighting
- b. New Air Distribution Systems
- c. Enhanced Exhaust Systems

E. MATERIALS:

- a. Gyp. Bd. Walls and Ceilings
- b. New Acoustic Ceilings
- c. Upgraded Ceilings at Lobby and Dining Areas

F. FINISHES:

- a. Enhanced Wall Accent Paint and Graphics
- b. New Carpet Tiles
- c. New Vinyl Flooring
- d. New Furniture Sleeping Systems

G. SPECIAL EQUIPMENT

- a. Commercial Kitchen Equipment
- b. New Air Handlers and Pumps
- c. Laundry equipment

INITIALS *PH DS*

EXHIBIT "D"

MASTER PROJECT SCHEDULE

Description	Date
1. Commencement of Planning/Programming Phase	Complete
2. Completion of Planning/Programming Phase	Complete
3. Commencement of Schematic Design Phase	Complete
4. Completion of Schematic Design Phase	Complete
5. Commencement of Design Development Phase	07/02/20
6. Completion of Design Development Phase	8/14/20
7. Commencement of Final Construction Documents Phase	09/1/20
50% Completion Submission Date	10/02/20
75% Completion Submission Date	11/06/20
Submission to Governmental Authorities Date	11/24/20
Final Construction Documents Completion Date	12/15/20
8. Commencement of Bidding/Negotiation Phase	01/8/21
9. Completion of Bidding/Negotiation Phase	04/07/21
10. Commencement of Construction	05/11/21
11. Construction Period (Estimated only. Actual construction period will be established when the Construction Contract is executed by Contractor and County)	13 months

INITIALS PH DS

EXHIBIT "E"

KEY PERSONNEL LIST

<u>Name:</u>	<u>Job Title:</u>
PariSima Hassani	Westgroup Design CEO - Managing Principal
David Jordan Smith	Westgroup Designs Principal in Charge
Jon Freeberg	Westgroup Design Project Manager
Joshua Smith	Westgroup Design Project Architect
James Spencer	Westgroup Designs Senior Job Caption
Robyn Taylor	Westgroup Designs Sr. Designer
Carla Salama	Westgroup Design Designer Job Captain
Farhad Rezai, PE	Coast Consulting Engineers Project Engineer
Charlotte Dean	P2S Inc. Mechanical Engineer
Aravind Batra	P2S Inc. Electrical Engineer
Josh Randal	KNA Structural Engineers Principal
Richard Diele	DMH Design Principal

INITIALS *PH DS*

EXHIBIT "F"

SUBCONSULTANTS AND COUNTY CONSULTANTS LIST

Subconsultants retained by Architect:

Civil Engineer

Name: Coast Engineers

Address: 10231 Slater Ave.,
Suite 201
Fountain Valley, CA 92708

Telephone: (714) 593-0337
Facsimile: (714) 593-0770

Mechanical/Electrical Engineer

Name: P2S

Address: 5000 East Spring
Street
Suite 800
Long Beach, CA 90815

Telephone: (562) 497-2999
Facsimile: (562) 497-2990

Structural Engineer

Name: KNA Structural
Engineer

Address: 9931 Muirlands
Boulevard
Irvine, CA 92618

Telephone: (949) 462-3200
Facsimile:

Food Service Designer

Name: DMH

Address: Post Office Box 28197
San Diego, CA 92128

Telephone: (619) 285-1189
Facsimile:

Name:

Address:

Telephone:
Facsimile:

Name:

Address:

Telephone:
Facsimile:

County Consultants retained by County:

Pre-Construction Services

Name: Tilden Coil

Address: 3612 Mission Inn Ave
Riverside, CA 92501

Telephone: (951) 684-5901
Facsimile: (951) 684-0725

Geotechnical Engineer

Name: GeoTek, Inc.

Address: 1548 North Maple
Street
Corona, CA 92880

Telephone: (951) 710-1160
Facsimile: (951) 710-1167

Name:

Address:

Telephone:
Facsimile:

Name:

Address:

Telephone:
Facsimile:

Name:

Address:

Telephone:
Facsimile:

Name:

Address:

Telephone:
Facsimile:

INITIALS *PH DS*

EXHIBIT "G"

REIMBURSABLE EXPENSES SCHEDULE

Description	Unit Price	Unit of Measure
<u>Agreed Rates for Reimbursable Expenses:</u>		
B & W Copies 8-1/2" x 11" / 11" x 17"	\$0.06 / \$0.12	/Sheet
Color Copies 8-1/2" x 11" / 11" x 17"	\$0.40 / \$1.30	/Sheet
B & W Blueprints 24" x 26"	\$0.12	/S.F.
Mylars 24" x 36"	\$13.00	/EA.
Disks	\$6.00	/EA.
<u>Vehicle Mileage</u>	\$0.56	mile
<u>Agreed Markups:</u>		
Architect's Markup on Direct Costs	10%	Actual Cost
Architect's Markup on Subconsultant Costs	10%	Actual Cost
Subconsultant Markup on Subconsultant Costs	10%	Actual Cost
<u>Reimbursable Expenses Not-to-Exceed Amount</u> (individual):	\$5,000.00	
<u>Reimbursable Expenses Not-to-Exceed Amount</u> (aggregate):	\$20,000.00	

INITIALS PH DS

EXHIBIT "H"

HOURLY RATES SCHEDULE

Westgroup Designs

Principal, Director

\$220.00 - \$250.00 /Hr.

Project Manager

\$150.00 - \$185.00 /Hr.

Project Designer, Project Architect, Interior
Designer, Planner, Specifications Writer,
QA/OC

\$125.00 - \$185.00 /Hr.

Project Staff

\$95.00 - \$115.00 /Hr.

Administrative Support

\$65.00 - \$95.00 /Hr.

INITIALS PH DS

EXHIBIT "I"

PAYMENT SCHEDULE

Phase:

Payment Percentage:

Schematic Design Phase	NA
Design Development Phase	20%
50% Completion of Construction Documents Phase	25%
Final Construction Documents Phase	25%
Furniture	3%
Construction Administration Phase	22%
Allowance and Reimbursable Expenses	5%

INITIALS *PH/DS*

EXHIBIT "J "

REFERENCE DOCUMENTS LIST

The Architect shall take into consideration in its preparation of the Design Documents the constraints, requirements and recommendations contained in the existing studies, reports and documents provided by the County or otherwise available as a matter of public record, including but not limited to the following Reference Documents:

Reference Document:	Prepared By:	Dated:
1. Geotechnical Report / Percolation Testing	GeoTek	TBD
2. As-Built Documents for Existing Improvements	County of Riverside	
3. CEQA compliance documentation and associated Mitigation Monitoring and Reporting Program (which may include, but not be limited to, other technical studies such as Air Quality, Biological Resources, and Cultural Resources)	In House Environmental	August 4, 2020

INITIALS *RH DS*

EXHIBIT "K "

STANDARD FORM OF GENERAL CONDITIONS

INITIALS PH DS

GENERAL CONDITIONS OF
THE STANDARD FORM CONSTRUCTION CONTRACT
BETWEEN COUNTY AND CONTRACTOR

(LONG FORM)

TABLE OF CONTENTS

ARTICLE 1 GENERAL PROVISIONS	1
1.1 DEFINITIONS	1
1.1.1 Acceptance	1
1.1.2 Act of God	1
1.1.3 Addendum	1
1.1.4 Admitted Surety	1
1.1.5 Allowable Costs	1
1.1.6 Allowable Markups	1
1.1.7 Alternate	1
1.1.8 Applicable Laws	1
1.1.9 Application for Payment	1
1.1.10 Architect	1
1.1.11 Assistant CEO/EDA	1
1.1.12 Award	2
1.1.13 Base Bid	2
1.1.14 Bid	2
1.1.15 Bid Amount	2
1.1.16 Bid Bond	2
1.1.17 Bid Closing Deadline	2
1.1.18 Bid Form	2
1.1.19 Bid Security	2
1.1.20 Bid Submittal	2
1.1.21 Bidder	2
1.1.22 Bidding Documents	2
1.1.23 Board of Supervisors	3
1.1.24 Change	3
1.1.25 Change Order	3
1.1.26 Change Order Request	3
1.1.27 Claim	3
1.1.28 Close-Out Documents	3
1.1.29 Compensable Change	3
1.1.30 Compensable Delay	4
1.1.31 Construction Change Directive	4
1.1.32 Construction Contract	4
1.1.33 Construction Schedule	4
1.1.34 Contract Adjustment	4
1.1.35 Contract Documents	4

1.1.36	Contract Price.	5
1.1.37	Contract Time.....	5
1.1.38	Contractor.	5
1.1.39	Contractor Amount.	5
1.1.40	Contractor's Own Expense.	5
1.1.41	County.	5
1.1.42	County Amount.	5
1.1.43	County Consultant.....	6
1.1.44	County Review Date.....	6
1.1.45	County Review Period.	6
1.1.46	County Risk Manager.	6
1.1.47	County Website.....	6
1.1.48	Date of Commencement.....	6
1.1.49	Day.	6
1.1.50	Declaration of Sufficiency of Funds.....	6
1.1.51	Defective Work.....	6
1.1.52	Delay.	6
1.1.53	Deleted Work.	6
1.1.54	Department of Industrial Relations.....	6
1.1.55	Design Discrepancy.	6
1.1.56	Design Documents.	6
1.1.57	Design Intent.....	7
1.1.58	Designation of Subcontractors.....	7
1.1.59	Differing Site Condition.....	7
1.1.60	Disability Laws.	7
1.1.61	Discovery Date.....	7
1.1.62	Drawings.....	7
1.1.63	EDA.	7
1.1.64	Environmental Laws.	7
1.1.65	Escrow Agent.....	7
1.1.66	Escrow Bid Documents.	7
1.1.67	Event of Contractor Default.	8
1.1.68	Evidence of Insurance.	8
1.1.69	Excusable Delay.	8
1.1.70	Existing Improvements.	8
1.1.71	Extra Work.	8
1.1.72	Final Completion, Finally Complete.	8
1.1.73	Final Completion Punch List.	9
1.1.74	Final Payment.	9
1.1.75	Force Majeure Event.	9
1.1.76	Fragnet.	9
1.1.77	General Conditions.....	9
1.1.78	General Requirements.	9
1.1.79	Good Faith Determination.....	9
1.1.80	Governmental Authority.....	9
1.1.81	Governmental Authority Review Period.....	9
1.1.82	Guarantee To Repair Period.....	10
1.1.83	Hazardous Substance.	10
1.1.84	Holiday.....	10
1.1.85	Indemnities.	10
1.1.86	Inspector of Record.....	10
1.1.87	Installation Subcontractor.	10
1.1.88	Instructions to Bidders.....	10

1.1.89	Intellectual Property Rights.....	10
1.1.90	Key Personnel, Key Persons.	10
1.1.91	Loss, Losses.	10
1.1.92	Modification.....	10
1.1.93	Mold.....	10
1.1.94	Non-Collusion Declaration.	10
1.1.95	Notice Inviting Bids.....	11
1.1.96	Notice Inviting Prequalification Statements.	11
1.1.97	Notice of Change.....	11
1.1.98	Notice of Completion.	11
1.1.99	Notice of Delay.....	11
1.1.100	Notice of Final Completion.....	11
1.1.101	Notice of Intent to Award.	11
1.1.102	Notice of Substantial Completion.....	11
1.1.103	Notice to Proceed.....	11
1.1.104	Payment Bond, Performance Bond.....	11
1.1.105	Plans.....	11
1.1.106	Post-Award Submittals.	11
1.1.107	Pre-Bid Conference.....	11
1.1.108	Prequalification.....	11
1.1.109	Prequalification Documents.	11
1.1.110	Prequalified Bidder.....	11
1.1.111	Product Data.	12
1.1.112	Progress Payment.....	12
1.1.113	Project.....	12
1.1.114	Project Documents.	12
1.1.115	Project Team.....	12
1.1.116	Reasonable Order of Magnitude Estimate.	12
1.1.117	Record Documents.....	12
1.1.118	Record Drawings, Record Specifications.	12
1.1.119	Reference Documents.....	12
1.1.120	Request for Extension.	12
1.1.121	Request for Information.....	12
1.1.122	Safety Program.	12
1.1.123	Samples.....	13
1.1.124	Schedule of Values.	13
1.1.125	Self-Performed Work.....	13
1.1.126	Separate Contractor.	13
1.1.127	Shop Drawing.....	13
1.1.128	Site.	13
1.1.129	Specifications.....	13
1.1.130	Standard of Performance.....	13
1.1.131	State Water Resources Control Board.....	13
1.1.132	Storm Water Permit.....	13
1.1.133	Sub-Bidder.....	13
1.1.134	Subcontractor.....	13
1.1.135	Submittal.....	13
1.1.136	Submittal Schedule.	13
1.1.137	Substantial Completion, Substantially Complete.....	13
1.1.138	Substantial Completion Punch List.	14
1.1.139	Substitution.	14
1.1.140	Substitution Request Form.....	14
1.1.141	Supplementary Conditions.....	14

	<u>Page</u>
1.1.142 Surety.....	14
1.1.143 Tier.....	14
1.1.144 Time Impact Analysis.....	14
1.1.145 Unexcused Delay.....	14
1.1.146 Unilateral Change Order.....	15
1.1.147 Work.....	15
1.1.148 Worker's Compensation Certificate.....	15
1.2 CORRELATION, INTERPRETATION AND INTENT OF CONTRACT DOCUMENTS.....	15
1.2.1 Design Intent.....	15
1.2.2 Complementary.....	15
1.2.3 Technical Words.....	15
1.2.4 Trade Names.....	15
1.2.5 Incidental Items.....	15
1.2.6 Drawing Dimensions.....	15
1.2.7 Drawings, Specifications.....	15
1.2.8 Typical Work.....	15
1.2.9 Divisions of the Work.....	16
1.2.10 Applicable Laws.....	16
1.2.11 Interpretations of Laws.....	16
1.2.12 Modifiers.....	16
1.2.13 Singular, Gender, Captions.....	16
1.2.14 Cross-References.....	16
1.2.15 Diagrammatic Design.....	16
1.2.16 Demolition.....	16
1.2.17 Omissions.....	16
1.2.18 Conflicts.....	17
1.2.19 Order of Precedence.....	17
1.2.20 Conditions Precedent.....	17
1.3 OWNERSHIP AND USE OF DRAWINGS, SPECIFICATIONS AND OTHER DOCUMENTS.....	17
1.3.1 Property of County.....	17
1.3.2 Assignment of Rights.....	18
1.3.3 Contractor's Warranty.....	18
1.3.4 Non-Exclusive License.....	18
1.3.5 Reproduction.....	18
1.3.6 Delivery to County.....	18
1.3.7 Subcontractors.....	18
ARTICLE 2 COUNTY RIGHTS AND OBLIGATIONS.....	18
2.1 INFORMATION, APPROVALS AND SERVICES REQUIRED OF COUNTY.....	18
2.1.1 Legal Descriptions.....	18
2.1.2 Permits and Fees.....	18
2.1.3 County Approvals.....	18
2.1.4 Approvals.....	19
2.1.5 Non-Specified Items.....	19
2.2 COUNTY'S RIGHT TO STOP THE WORK.....	19
2.3 COUNTY'S RIGHT TO CARRY OUT THE WORK.....	19
2.4 ACCOUNTING, RECORDS AND AUDIT.....	19
2.4.1 Accounting System.....	19

	<u>Page</u>
2.4.2 Books and Records.....	20
2.4.3 Inspection and Copying.....	20
2.4.4 Confidential Information.....	20
2.4.5 Withholding of Payment.....	20
2.4.6 Specific Performance.....	20
2.5 COUNTY FURNISHED MATERIALS.....	20
2.5.1 Supply by County.....	20
2.5.2 Deleted Work.....	20
2.5.3 Delivery Deadlines.....	20
2.5.4 Delivery to Site.....	21
2.5.5 Care, Custody and Control.....	21
2.5.6 Notice of Deficiencies.....	21
2.5.7 Incorporation in Work.....	21
2.6 COUNTY INSTALLED ITEMS.....	21
2.7 COUNTY'S ADDITIONAL RIGHTS.....	21
ARTICLE 3 CONTRACTOR PERFORMANCE.....	21
3.1 CONTRACTOR STATUS.....	21
3.1.1 Independent Contractor.....	21
3.1.2 Agents, Employees.....	21
3.1.3 Licenses.....	22
3.1.4 Subcontractors.....	22
3.1.5 Design Services.....	22
3.2 REVIEW OF DOCUMENTS, SITE AND EXISTING IMPROVEMENTS.....	22
3.2.1 Contractor's Duty of Review.....	22
3.2.2 Contract Adjustments.....	22
3.2.3 WAIVER BY CONTRACTOR.....	23
3.2.4 Continuing Obligation.....	24
3.2.5 Requests for Information.....	24
3.2.6 Correction of Work.....	25
3.3 SUPERVISION AND CONSTRUCTION PROCEDURES.....	25
3.3.1 General Obligation.....	25
3.3.2 Supervisory Staff.....	25
3.3.3 County Supplementary Personnel.....	25
3.3.4 Means, Methods, Procedures.....	25
3.4 LABOR, MATERIALS AND EQUIPMENT.....	26
3.4.1 Costs of Work.....	26
3.4.2 Coordination.....	26
3.4.3 Field Conditions.....	26
3.4.4 Layout.....	26
3.4.5 Materials, Equipment.....	26
3.5 CONTRACTOR'S WARRANTY.....	27
3.5.1 General Warranty.....	27
3.5.2 Repair, Replacement.....	27
3.5.3 Not a Limitation.....	27
3.5.4 Assignment.....	28
3.5.5 Close-Out.....	28

	<u>Page</u>
3.6 TAXES.....	28
3.6.1 Payment by Contractor.....	28
3.6.2 Tax Exempt Projects.....	28
3.6.3 Records of Taxes.....	28
3.7 PERMITS, FEES AND LEGAL NOTICES.....	28
3.7.1 Permits.....	28
3.7.2 Applicable Laws, Notices.....	28
3.7.3 Bonds, Undertakings.....	28
3.7.4 Notice of Violations.....	29
3.7.5 Governmental Authority Approvals.....	29
3.8 CONTRACTOR'S PERSONNEL.....	29
3.8.1 Key Persons.....	29
3.8.2 Background Check.....	29
3.8.3 Project Manager.....	29
3.8.4 Transfer.....	29
3.8.5 Removal.....	29
3.8.6 Replacement.....	29
3.8.7 Communications.....	29
3.8.8 Contact Information.....	29
3.8.9 Signatures.....	29
3.8.10 Exclusion from Site.....	29
3.9 CONTRACTOR'S CONSTRUCTION SCHEDULE.....	30
3.9.1 Preparation.....	30
3.9.2 Format.....	30
3.9.3 Detail.....	30
3.9.4 Updates.....	30
3.9.5 Governing Schedule.....	30
3.9.6 Submittal Schedule.....	31
3.9.7 Schedule Responsibility.....	31
3.9.8 Condition of Payment.....	31
3.9.9 Scheduling by County.....	31
3.10 DOCUMENTS AT SITE, REPORTING, MEETINGS.....	31
3.10.1 Documents at Site.....	31
3.10.2 Daily Reports.....	32
3.10.3 Progress Meetings.....	32
3.10.4 Notice Requirements.....	32
3.10.5 Availability for Review.....	33
3.11 SUBMITTALS.....	33
3.11.1 Not Contract Documents.....	33
3.11.2 Coordination with Others.....	33
3.11.3 Submission by Contractor.....	33
3.11.4 Review of Submittals.....	34
3.11.5 Contract Adjustments.....	34
3.11.6 Compliance with Contract.....	34
3.12 USE OF SITE.....	34
3.12.1 Staging Area.....	34
3.12.2 Existing Improvements.....	34

	<u>Page</u>
3.12.3 Operations at Site.....	34
3.12.4 Coordination.....	34
3.12.5 Unauthorized Use.....	35
3.12.6 Site Security.....	35
3.12.7 Persons on Site.....	35
3.12.8 County Uses and Activities.....	35
3.12.9 Dust, Fumes, Noise.....	35
3.12.10 Confinement of Operations.....	35
3.12.11 Prohibited Substances.....	35
3.12.12 Survey Markers.....	35
3.12.13 Drainage, Erosion.....	35
3.12.14 Trenches.....	35
3.13 CUTTING AND PATCHING	36
3.14 UTILITIES AND SANITARY FACILITIES.....	36
3.14.1 Contractor Responsibility.....	36
3.14.2 County Responsibility.....	36
3.14.3 Temporary Utilities.....	36
3.14.4 Sanitary Facilities.....	37
3.15 CLEANING UP.....	37
3.15.1 Contractor Responsibility.....	37
3.15.2 Cleanup by County.....	37
3.16 ACCESS TO THE WORK	37
3.16.1 County.....	37
3.16.2 Separate Contractors.....	37
3.16.3 Delivery Routes.....	37
3.17 INTELLECTUAL PROPERTY RIGHTS	37
3.18 INDEMNIFICATION	38
3.18.1 Contractor's Indemnity Obligation.....	38
3.18.2 Indemnification of Adjacent Property Owners.....	38
3.18.3 Insurance and Employment Benefits.....	38
3.18.4 Subcontractor Indemnity Agreements.....	39
3.18.5 Implied Indemnity Rights.....	39
3.18.6 Obligation to Defend.....	39
3.18.7 Enforcement.....	39
3.19 LABOR, WAGES, PAYROLL RECORDS	39
3.19.1 Public Work.....	39
3.19.2 Prevailing Wage Rates.....	39
3.19.3 Unclassified Workers.....	39
3.19.4 Per Diem Wages.....	40
3.19.5 Applicable Laws.....	40
3.19.6 Posting at Site.....	40
3.19.7 Worker Hours.....	40
3.19.8 Overtime.....	40
3.19.9 Payroll Records.....	40
3.19.10 Apprentices.....	41
3.19.11 Pre-Construction Meetings, Interviews.....	42
3.19.12 Penalties for Violations.....	42

	<u>Page</u>
3.19.13 Subcontractor Provisions.....	43
3.19.14 Condition of Payment.....	43
3.20 LABOR CODE §2810.....	43
3.20.1 Application.....	43
3.20.2 Declaration by Contractor.....	43
3.20.3 Continuing Duty.....	43
3.21 URBAN RUNOFF AND STORM WATER COMPLIANCE	43
3.21.1 Contractor's Responsibility.....	43
3.21.2 Inspections, Reports.....	44
3.21.3 Violations.....	44
3.21.4 Condition of Payment.....	44
3.21.5 Costs of Compliance.....	44
3.22 SOLID WASTE MANAGEMENT	44
3.23 CEQA COMPLIANCE	44
3.24 AQMD COMPLIANCE.....	44
ARTICLE 4 CONSTRUCTION ADMINISTRATION.....	45
4.1 ARCHITECT	45
4.1.1 Scope of Authority.....	45
4.1.2 Limitations on Authority.....	45
4.1.3 Work Stoppage.....	45
4.1.4 Replacement.....	45
4.1.5 County Rights.....	45
4.2 ADMINISTRATION OF THE CONSTRUCTION CONTRACT	45
4.2.1 Observations of the Work.....	45
4.2.2 Means, Methods.....	45
4.2.3 Communications by Contractor.....	46
4.2.4 Review of Applications for Payment.....	46
4.2.5 Rejection of the Work.....	46
4.2.6 Review of Submittals.....	46
4.2.7 Changes.....	46
4.3 CLAIMS	46
4.3.1 Submission of Claims.....	46
4.3.2 Arising of Claim.....	46
4.3.3 Content of Claims.....	47
4.3.4 Noncompliance.....	48
4.3.5 Submission of Claims.....	48
4.3.6 Response to Claims by Contractor.....	48
4.3.7 Meet and Confer.....	48
4.3.8 Claims Based on Differing Site Conditions.....	49
4.3.9 Continuous Work.....	49
4.4 ATTORNEY'S FEES.....	50
4.5 NOTICE OF THIRD-PARTY CLAIMS.....	50
4.6 WAIVERS OF RIGHTS BY CONTRACTOR.....	50
4.7 GOOD FAITH DETERMINATIONS	50

	<u>Page</u>
4.8 ESCROW BID DOCUMENTS	50
ARTICLE 5 SUBCONTRACTORS.....	51
5.1 SUBSTITUTION.....	51
5.1.1 Substitutions Allowed.	51
5.1.2 Contractor's Own Expense.	51
5.1.3 Substantiation of Compliance.	51
5.1.4 Splitting Prohibited.	51
5.2 SUBCONTRACTUAL RELATIONS	51
5.2.1 Written Agreements.....	51
5.2.2 Copies.....	52
5.2.3 No Brokering.	52
5.2.4 Third-Party Rights.	52
5.2.5 All Subcontractor Tiers.	52
5.3 CONTINGENT ASSIGNMENT OF SUBCONTRACTS.....	53
5.3.1 Contingent Assignment.	53
5.3.2 Acceptance by County.....	53
5.3.3 County Obligation.....	53
5.4 COMMUNICATIONS BY COUNTY	53
5.5 DOCUMENT AVAILABILITY	53
5.6 NO LIABILITY OF COUNTY.....	53
ARTICLE 6 COUNTY'S OWN FORCES AND SEPARATE CONTRACTORS	53
6.1 COUNTY'S RIGHT TO PERFORM CONSTRUCTION WITH OWN FORCES AND TO AWARD SEPARATE CONTRACTS	53
6.1.1 Right of County.	53
6.1.2 Separate Contractors.	54
6.1.3 Coordination.....	54
6.1.4 Disputes.	54
6.1.5 Remedy.	54
6.2 MUTUAL RESPONSIBILITY	54
6.2.1 Use of Site.	54
6.2.2 Adjoining Work.	54
6.2.3 Damage.	54
6.2.4 Disputes.	54
6.2.5 Settlement of Disputes.	54
6.3 ALLOCATION OF CLEANUP COSTS	55
ARTICLE 7 CHANGES IN THE WORK	55
7.1 CHANGES.....	55
7.1.1 General.	55
7.1.2 Contract Adjustments.	55
7.1.3 Exclusive Rights.....	55
7.1.4 Written Authorization.	55
7.1.5 Prompt Performance.	55
7.2 SIGNATURES AND AUTHORIZATIONS.....	55

	<u>Page</u>
7.2.1 Parties.....	55
7.2.2 Form.....	55
7.2.3 Authorization.....	55
7.3 CHANGE ORDERS	56
7.3.1 Purpose.....	56
7.3.2 Content.....	56
7.4 UNILATERAL CHANGE ORDERS.....	56
7.4.1 Purpose.....	56
7.4.2 Good Faith Determination.....	57
7.4.3 Claim by Contractor.....	57
7.4.4 WAIVER BY CONTRACTOR.....	57
7.5 CONSTRUCTION CHANGE DIRECTIVES	57
7.5.1 Purpose.....	57
7.5.2 No Contract Adjustment.....	57
7.5.3 Agreed Contract Adjustment.....	57
7.5.4 Disputed Contract Adjustment.....	59
7.5.5 Other Notices.....	59
7.6 PROCEDURES.....	59
7.6.1 Notice of Change.....	59
7.6.2 Change Order Request.....	60
7.6.3 Formal Notice of Essence.....	60
7.7 PRICING.....	61
7.7.1 Basis of Calculation.....	61
7.7.2 Time and Materials Documentation.....	62
7.7.3 Allowable Costs.....	63
7.7.4 Costs Not Allowed.....	64
7.7.5 Allowable Markups.....	65
7.7.6 Review of Markups.....	67
7.7.7 Exclusions and Limitations.....	67
7.7.8 Net Calculations.....	67
7.7.9 Unit Prices.....	67
7.7.10 Discounts.....	67
7.7.11 Prompt Pricing.....	67
7.7.12 Final Payment.....	68
7.7.13 Full Resolution.....	68
7.7.14 Reserved Rights.....	68
7.7.15 No "Total Cost" Calculations.....	68
7.7.16 Multiple Changes.....	68
7.7.17 Continuous Performance.....	69
ARTICLE 8 CONTRACT TIME.....	69
8.1 COMMENCEMENT AND COMPLETION	69
8.1.1 Date of Commencement.....	69
8.1.2 Substantial, Final Completion.....	69
8.1.3 Adjustments to Contract Time.....	69
8.1.4 Early Completion.....	69
8.2 DELAYS AND EXTENSIONS OF TIME.....	69

	<u>Page</u>
8.2.1 Adjustments to Contract Time.....	69
8.2.2 Notice of Delay.....	70
8.2.3 Request for Extension.....	71
8.2.4 Response by County.....	71
8.2.5 Formal Notice of Essence.....	72
8.2.6 Compensation for Delay.....	72
8.2.7 Acceleration of the Work.....	72
8.2.8 Concurrent Delays.....	73
8.2.9 Delay Claims.....	73
8.2.10 Exercise of County Rights.....	73
ARTICLE 9 PAYMENTS AND COMPLETION	74
9.1 PAYMENT BY COUNTY	74
9.1.1 Time for Payment.....	74
9.1.2 Not Acceptance.....	74
9.1.3 Interest.....	74
9.1.4 Disputed Payments.....	74
9.2 APPLICATIONS FOR PAYMENTS	74
9.2.1 Submission by Contractor.....	74
9.2.2 Period of Application.....	74
9.2.3 Schedule of Values.....	74
9.2.4 Changes in Work.....	74
9.2.5 Progress Payments.....	74
9.2.6 Percentage Completion.....	74
9.2.7 Projected Work.....	74
9.2.8 Disagreements.....	75
9.2.9 Substantial Completion.....	75
9.2.10 Certification by Contractor.....	75
9.2.11 Stored Materials.....	75
9.2.12 Title.....	75
9.3 SCHEDULE OF VALUES.....	75
9.3.1 Initial Submission.....	75
9.3.2 Balanced Allocation.....	75
9.3.3 Line Estimates.....	76
9.3.4 Updating.....	76
9.3.5 Substantiation.....	76
9.3.6 Corrections.....	76
9.3.7 Changes to Work.....	76
9.3.8 Applications for Payment.....	76
9.4 PROGRESS PAYMENT CONDITIONS.....	76
9.4.1 Progress Payment Amount.....	76
9.4.2 Other Conditions and Documentation.....	76
9.5 COUNTY APPROVAL/REJECTION OF APPLICATIONS FOR PAYMENT	77
9.5.1 Review by County.....	77
9.5.2 Disapproval by County.....	77
9.5.3 Re-submittal by Contractor.....	77
9.5.4 Approval Nullification.....	77
9.5.5 No Waiver by County.....	78
9.5.6 No Representation.....	78

	<u>Page</u>
9.6 WITHHOLDING OF PAYMENT	78
9.6.1 Grounds for Withholding.....	78
9.6.2 Application of Withholding.	79
9.6.3 Final Payment.	79
9.6.4 Release of Withholding.....	79
9.6.5 Additional Rights.	79
9.7 PAYMENTS BY CONTRACTOR.....	79
9.7.1 Payments to Subcontractors.....	79
9.7.2 Payments in Trust.	80
9.7.3 Payment Information.	80
9.7.4 Joint Payment.	80
9.7.5 Direct Negotiation of Stop Payment Notices.....	80
9.7.6 Release of Stop Payment Notices.	80
9.7.7 No County Obligation.	80
9.8 FAILURE OF PAYMENT	81
9.9 SUBSTITUTION OF SECURITIES FOR RETENTION.....	81
9.9.1 Public Contract Code.....	81
9.9.2 Substitute Security.	81
9.9.3 Deposit of Retentions.	81
9.10 FINAL PAYMENT	82
9.10.1 Payment by County.	82
9.10.2 Application for Final Payment.	82
9.10.3 Review by County.	82
9.10.4 Conditions to Final Payment.....	82
9.10.5 Disputed Amounts.	82
9.10.6 No Waiver by County.....	83
9.10.7 WAIVER BY CONTRACTOR.....	83
9.11 SUBSTANTIAL COMPLETION	83
9.11.1 Contract Time.....	83
9.11.2 Request for Inspection.....	83
9.11.3 Substantial Completion Inspection.....	83
9.11.4 Substantial Completion Punch List.	83
9.11.5 Re-Inspection.	83
9.11.6 Notice of Substantial Completion.....	84
9.12 PARTIAL OCCUPANCY OR USE	84
9.13 FINAL COMPLETION	85
9.13.1 Contract Time.....	85
9.13.2 Final Completion Punch List.	85
9.13.3 Performance of Punch List.	85
9.13.4 Request for Final Inspection.	85
9.13.5 Notice of Final Completion.....	85
9.13.6 Acceptance by County.....	85
9.13.7 Notice of Completion.	85
9.13.8 No Waiver by County.....	85
ARTICLE 10 INSPECTIONS, SAFETY AND HAZARDOUS SUBSTANCES	86
10.1 INSPECTIONS.....	86

	<u>Page</u>
10.1.1 General.....	86
10.1.2 Coordination.....	86
10.1.3 Uncovering of Work.....	86
10.1.4 Off-Hours Inspections.....	86
10.1.5 Access to the Work.....	86
10.1.6 Right to Stop Work.....	86
10.1.7 No County Duty.....	86
10.1.8 Contractor Responsibility.....	87
10.1.9 Reimbursement to County.....	87
10.2 SAFETY PRECAUTIONS AND PROGRAMS.....	87
10.2.1 General Safety Obligation.....	87
10.2.2 Contractor's Safety Program.....	87
10.2.3 Safety Orders.....	87
10.2.4 Safety Representative.....	87
10.2.5 Protection.....	88
10.2.6 Safeguards, Disabled Access.....	88
10.2.7 Fire, Explosives, Hazardous Substances.....	88
10.2.8 First Aid.....	88
10.2.9 Unsafe Conditions.....	88
10.2.10 Responsibility for Loss.....	88
10.2.11 Loading, Storage.....	88
10.2.12 Emergency.....	88
10.2.13 No County Responsibility.....	89
10.2.14 Separate Contractors.....	89
10.3 HAZARDOUS SUBSTANCES, MOLD.....	89
10.3.1 Hazardous Substances.....	89
10.3.2 Mold.....	91
10.3.3 Release of County.....	91
10.3.4 Communications with Governmental Authorities.....	91
10.3.5 Subcontractors.....	91
ARTICLE 11 INSURANCE.....	91
11.1 INSURANCE.....	91
11.1.1 Contractor's Insurance Requirements.....	91
11.1.2 Other Mandatory Insurance Requirements.....	93
ARTICLE 12 BONDS.....	94
12.1 PERFORMANCE BOND AND PAYMENT BOND.....	94
12.1.1 Performance and Payment Bonds.....	94
12.1.2 Changes.....	94
12.1.3 Replacement.....	94
12.1.4 Duration.....	94
12.1.5 Condition of Payment.....	94
12.1.6 Surety Rating.....	94
12.1.7 Premiums.....	94
12.1.8 Obligee.....	94
12.1.9 No Exoneration.....	95
12.1.10 Communications.....	95
12.1.11 No Limitation.....	95
12.1.12 Subcontractor Bonds.....	95

	<u>Page</u>
12.1.13 Claims.....	95
ARTICLE 13 UNCOVERING AND CORRECTION OF THE WORK.....	95
13.1 UNCOVERING OF THE WORK.....	95
13.2 CORRECTION OF THE WORK.....	95
13.3 GUARANTEE TO REPAIR PERIOD	95
13.3.1 Guarantee To Repair Period.....	95
13.3.2 Repair by Contractor.	96
13.3.3 Notice by County.....	96
13.3.4 Correction by County.....	96
13.3.5 Sale.	96
13.3.6 No Limitation.....	97
13.4 ACCEPTANCE OF NONCONFORMING WORK.....	97
ARTICLE 14 MISCELLANEOUS PROVISIONS.....	97
14.1 GOVERNING LAW	97
14.2 TIME OF ESSENCE	97
14.3 SUCCESSORS AND ASSIGNS.....	97
14.4 WRITTEN NOTICE	97
14.4.1 Notice to County.....	97
14.4.2 Notice to Contractor.	98
14.4.3 Notice to Claimant.....	98
14.4.4 Notice to Surety.....	98
14.5 RIGHTS AND REMEDIES.....	98
14.5.1 County Rights.....	98
14.5.2 Writing Required.	98
14.5.3 Subsequent Breach.....	98
14.6 NO NUISANCE	98
14.7 EXTENT OF AGREEMENT.....	98
14.8 NO THIRD-PARTY RIGHTS	98
14.9 SEVERABILITY	99
14.10 PROVISIONS REQUIRED BY APPLICABLE LAWS.....	99
14.11 SURVIVAL.....	99
14.12 FEDERAL GRANTS.....	99
14.13 PROHIBITED INTERESTS	99
14.14 ASSIGNMENT OF ANTI-TRUST ACTIONS	99
14.15 NO WAIVER	100
14.16 CONSENT TO PHOTOGRAPHING	100
ARTICLE 15 DEFAULT, TERMINATION AND SUSPENSION.....	100
15.1 COUNTY REMEDIES FOR DEFAULT	100
15.1.1 Event of Default.....	100

	<u>Page</u>
15.1.2 County's Remedies	101
15.1.3 Contractor Tools, Equipment	101
15.1.4 Contractor Obligations	101
15.1.5 Accounting and Payment	102
15.1.6 Surety	103
15.1.7 Conversion	103
15.1.8 Substantial Performance Waived	104
15.1.9 Cross Default	104
15.1.10 Rights Cumulative	104
15.1.11 Materiality	104
15.1.12 County Action	104
15.2 SUSPENSION BY COUNTY FOR CONVENIENCE	104
15.2.1 Suspension Order	104
15.2.2 Resumption	104
15.2.3 Limitation	104
15.3 TERMINATION BY COUNTY FOR CONVENIENCE	104
15.3.1 Right to Terminate for Convenience	104
15.3.2 Contractor Obligations	104
15.3.3 Contractor Compensation	105
15.3.4 Exclusive Compensation	105
15.3.5 Subcontractors	105
15.4 TERMINATION BY CONTRACTOR	105
15.4.1 Contractor's Remedies	105
15.4.2 Notice of Intention to Terminate	105
15.4.3 Continuous Performance	105
15.5 WARRANTIES	105
ARTICLE 16 NON-DISCRIMINATION	106
16.1 NON-DISCRIMINATION IN SERVICES	106
16.2 NON-DISCRIMINATION IN EMPLOYMENT	106

GENERAL CONDITIONS OF
THE STANDARD FORM CONSTRUCTION CONTRACT
BETWEEN COUNTY AND CONTRACTOR

(LONG FORM)

ARTICLE 1
GENERAL PROVISIONS

1.1 DEFINITIONS

1.1.1 **Acceptance.** "Acceptance" means the point that the Project is formally accepted by the Board of Supervisors and a Notice of Completion is recorded by County.

1.1.2 **Act of God.** "Act of God" means earthquake, natural flood, tornado or other unusually severe natural or weather phenomenon occurring at the Site and causing Delay to performance of the Work at the Site; provided, however, that precipitation and winds shall not be an Act of God unless it exceeds in any given month the 10-year average of monthly levels as established by the National Oceanic and Atmospheric Administration ("NOAA") according to NOAA's records of measurable precipitation and winds taken at NOAA's recording station located within the Riverside County basin area that is nearest to the Site.

1.1.3 **Addendum.** "Addendum" means written or graphic information (including, without limitation, Drawings or Specifications) issued prior to the Bid Closing Deadline, which modifies or interprets the Bidding Documents by additions, deletions, clarifications or corrections.

1.1.4 **Admitted Surety.** "Admitted Surety" means a surety insurer that is duly certified pursuant to California Insurance Code §995.120 to transact business as a surety in the State of California.

1.1.5 **Allowable Costs.** "Allowable Costs" means those costs listed in Paragraph 7.7.3, below, that are used in calculating Contract Adjustments to the Contract Price.

1.1.6 **Allowable Markups.** "Allowable Markups" means those percentage markups listed in Paragraph 7.7.5, below, used in calculating Contract Adjustments to the Contract Price.

1.1.7 **Alternate.** "Alternate" means a proposed alternative described in the Bidding Documents adding to, or deleting from, the Bidding Documents a particular material, system, product or method of construction.

1.1.8 **Applicable Laws.** "Applicable Laws" means all statutes, ordinances, rules, regulations, policies and guidelines enacted by Governmental Authorities (including, without limitation, Environmental Laws and Disability Laws), codes adopted or promulgated by Governmental Authorities (including, without limitation, building and health and safety codes), lawful orders of Governmental Authorities and common law, including, but not limited to, principles of equity applied by the courts of the State of California, which are in effect at the time the Work is performed.

1.1.9 **Application for Payment.** "Application for Payment" means Contractor's itemized application for Progress Payment or Final Payment prepared, submitted and substantiated in accordance with the requirements of the Contract Documents.

1.1.10 **Architect.** "Architect" means the design professional retained by County that is primarily responsible for the preparation of the Drawings and Specifications for the Project.

1.1.11 **Assistant CEO/EDA.** "Assistant CEO/EDA" means the Assistant CEO for the Economic Development Agency, or his/her designee.

1.1.12 **Award.** "Award" means either (1) a minute order duly adopted by the Board of Supervisors approving County's entering into the Construction Contract with Contractor or (2) execution of the Construction Contract by the Clerk of the Board.

1.1.13 **Base Bid.** "Base Bid" means the sum of money stated in a Bid for which the Bidder proposes to perform the Work, exclusive of adjustments for Alternates.

1.1.14 **Bid.** "Bid" means the completed and signed Bid Form and other Bid Submittals submitted by a Bidder to County in response to the Notice Inviting Bids and in accordance with the Instructions to Bidders.

1.1.15 **Bid Amount.** "Bid Amount" means the dollar amount that is used as the basis for determining which Bidder has submitted the lowest Bid price for purposes of Award pursuant to the County's chosen method of Award set forth in Paragraph 4.5.3 of the Instructions to Bidders.

1.1.16 **Bid Bond.** "Bid Bond" means alternative form of Bid Security submitted by a Bidder that consists of a surety bond issued by a Surety.

1.1.17 **Bid Closing Deadline.** "Bid Closing Deadline" means the deadline (date and time) for receipt of Bids by County that is stated in the Bidding Documents, as adjusted by Addendum.

1.1.18 **Bid Form.** "Bid Form" means the form prescribed by the Bidding Documents to be completed and signed by a Bidder showing the dollar amount(s) of its Bid.

1.1.19 **Bid Security.** "Bid Security" means a deposit of cash, certified or cashier's check or bond submitted by a Bidder in accordance with the Bidding Documents guaranteeing that if Award is made to the Bidder, the Bidder will enter into the Construction Contract and furnish the Performance Bond and Payment Bond and other Post-Award Submittals.

1.1.20 **Bid Submittal.** "Bid Submittal" means a document that Bidder is required by the Bidding Documents to submit with or as part of its Bid.

1.1.21 **Bidder.** "Bidder" means a person or entity submitting a Bid for Award of the Construction Contract.

1.1.22 **Bidding Documents.** "Bidding Documents" means the following collection of documents prepared and issued by County relating to the Project:

- .1 Notice Inviting Bids;
- .2 Instructions to Bidders;
- .3 Bid Form;
- .4 Standard Form of Construction Contract Between County and Contractor (unsigned);
- .5 General Conditions to Standard Form of Construction Contract Between County and Contractor (Long Form);
- .6 Specifications;
- .7 Plans and Drawings;
- .8 Addenda;
- .9 Reference Documents;
- .10 Safety Program; and

.11 those documents, or those portions or provisions of documents, that, although not listed in Subparagraph 1.1.22.2 through Subparagraph 1.1.22.10, above, are expressly cross-referenced therein or attached thereto, including, without limitation, all documents submitted by Contractor as part of its Bid or Post-Award Submittals.

1.1.23 **Board of Supervisors.** "Board of Supervisors" means the Board of Supervisors for the County of Riverside.

1.1.24 **Change.** "Change" means a modification, change, addition, substitution or deletion in the Work or in Contractor's means, methods, manner, time or sequence of performing the Work arising from any cause or circumstances, including, without limitation, either directly at the request of County or constructively by reason of other circumstances. Use of the term "Change," in any context, in the Contract Documents shall not be interpreted as implying that Contractor is entitled to a Contract Adjustment on any basis other than as permitted by the terms of the Contract Documents for Compensable Change, Deleted Work or Compensable Delay.

1.1.25 **Change Order.** "Change Order" means a written instrument, signed in accordance with the requirements of the General Conditions, setting forth the agreement of County and Contractor on the terms of a Contract Adjustment.

1.1.26 **Change Order Request.** "Change Order Request" means Contractor's written request for a Contract Adjustment pursuant to Paragraph 7.6.2, below.

1.1.27 **Claim.** "Claim" means a written demand or assertion by Contractor seeking, as a matter of right, an interpretation of contract, payment of money, recovery of damages or other relief. A Claim does not include the following: (1) tort claims for personal injury or death; (2) stop payment notice claims; (3) a determination of the right of County to specific performance or injunctive relief to compel performance; (4) a determination of the right of County to suspend, revoke or limit the Contractor's Prequalification status or rating or to debar Contractor from bidding or contracting with County; or (5) a determination of the right of County under Applicable Laws to terminate the Construction Contract and/or recovery of penalties imposed upon Contractor for violation of statutory obligations under Public Contract Code §4100 *et seq.*

1.1.28 **Close-Out Documents.** "Close-Out Documents" means all Record Documents, warranties, guarantees, technical information, operations manuals, replacement parts, excess and attic stock and other documents (including, without limitation, electronic versions and hard copies) and things required to be submitted by Contractor under the Contract Documents as a condition of Final Completion or Final Payment.

1.1.29 **Compensable Change.** "Compensable Change" means circumstances involving the performance of Extra Work:

.1 that are the result of

(1) Differing Site Conditions,

(2) amendments or additions to Applicable Laws, which amendments or additions are enacted after the Bid Closing Deadline,

(3) a Change requested by County in accordance with the conditions of authorization applicable to Compensable Changes set forth in Article 7, below, or

(4) other circumstances involving a Change in the Work for which Contractor is given under the Contract Documents a specific and express right to a Contract Adjustment to the Contract Price;

.2 that are not caused, in whole or in part, by an act or omission of Contractor or a Subcontractor, of any Tier, constituting negligence, willful misconduct, or violation of an Applicable Law, or by a failure of Contractor of a Subcontractor, of any Tier, to comply with the Contract Documents;

.3 for which a Contract Adjustment is neither prohibited by nor waived under the terms of the Contract Documents; and

.4 that if performed would require Contractor to incur additional and unforeseeable Allowable Costs that would not have been required to be incurred in the absence of such circumstances.

1.1.30 **Compensable Delay.** "Compensable Delay" means a Delay to the critical path of activities affecting Contractor's ability to achieve Substantial Completion of the entirety of the Work within the Contract Time:

.1 that is the result of

(a) a Compensable Change,

(b) the active negligence of County, Architect, a County Consultant or a Separate Contractor,

(c) a breach by County of an obligation under the Contract Documents, or

(d) other circumstances involving Delay for which Contractor is given under the Contract Documents a specific and express right to a Contract Adjustment adjusting the Contract Price;

.2 that is not caused, in whole or in part, by an act or omission of Contractor or a Subcontractor, of any Tier, constituting negligence, willful misconduct, or a violation of an Applicable Law, or a failure by Contractor or any Subcontractor, of any Tier, to comply with the Contract Documents; and

.3 for which a Contract Adjustment to the Contract Time is neither prohibited by nor waived under the terms of the Contract Documents.

1.1.31 **Construction Change Directive.** "Construction Change Directive" means a written instrument signed in accordance with the requirements of Article 7, below, that: (1) directs the performance of a Change that does not involve a Contract Adjustment; (2) establishes a mutually agreed basis for compensation to Contractor for a Compensable Change under circumstances where performance of the Compensable Change needs to proceed in advance of the County performing a full evaluation of the Contractor's rights relative to a Contract Adjustment; or (3) directs performance of Work or a Change with respect to which there exists a dispute or question regarding the terms of a Contract Adjustment.

1.1.32 **Construction Contract.** "Construction Contract" means the written form of Standard Form of Construction Contract Between County and Contractor included in the Bidding Documents signed by County and Contractor.

1.1.33 **Construction Schedule.** "Construction Schedule" means the detailed, critical path schedule prepared by Contractor in accordance with the requirements of the Contract Documents showing Contractor's plan for performance of the Work within the Contract Time.

1.1.34 **Contract Adjustment.** "Contract Adjustment" means an adjustment, additive or deductive, to the Contract Price or Contract Time that is permitted by the Contract Documents due to circumstances constituting a Compensable Change, Compensable Delay or Deleted Work.

1.1.35 **Contract Documents.** "Contract Documents" means the following collection of documents:

.1 Construction Contract;

.2 Addenda;

.3 General Conditions;

- .4 Specifications;
- .5 Plans and Drawings;
- .6 Modifications;
- .7 Reference Documents;
- .8 Change Orders;
- .9 Unilateral Change Orders;
- .10 Construction Change Directives;
- .11 Safety Program;

.12 other documents that comprise exhibits, attachments or riders to the documents listed in preceding Subparagraph 1.1.35.1 through Subparagraph 1.1.35.11, above;

- .13 executed Declaration of Sufficiency of Funds;
- .14 executed Non-Collusion Declaration; and

.15 if the Bidding Documents limit bidding to Prequalified Bidders, those written representations, obligations or responsibilities made, acknowledged or assumed by the Bidder as part of the applicable Prequalification conducted by County, including, without limitation, any continuing obligations assumed by Contractor to disclose false or misleading information, report changes in ownership or management and comply with minimum safety requirements.

1.1.36 Contract Price. "Contract Price" means the dollar amount set forth in the Construction Contract as the total compensation payable by County to Contractor for complete performance by Contractor in accordance with the Contract Documents of the Work and other obligations assumed by Contractor under the Contract Documents.

1.1.37 Contract Time. "Contract Time" means the total number of Days set forth in the Construction Contract within which Contractor is obligated to achieve Substantial Completion and/or Final Completion of the Work, as extended or shortened by Contract Adjustments.

1.1.38 Contractor. "Contractor" means the person or entity identified by County as the Bidder receiving Award of the Construction Contract.

1.1.39 Contractor Amount. "Contractor Amount" means the component amount calculated on behalf of Contractor pursuant to Paragraph 15.1.5, below, that is used to determine the total net amount payable to Contractor or County in the event of a partial or full termination or discontinuance of the Work.

1.1.40 Contractor's Own Expense. "Contractor's Own Expense" means that Contractor agrees to assume sole responsibility to pay and be responsible for any resulting or associated Loss and Delay, without any Contract Adjustment and without any other form of compensation or reimbursement, of any kind, by County.

1.1.41 County. "County" means the County of Riverside, a political subdivision of the State of California.

1.1.42 County Amount. "County Amount" means the component amount calculated on behalf of County pursuant to Paragraph 15.1.5, below, that is used to determine the total net amount payable to Contractor or County in the event of a partial or full termination or discontinuance of the Work.

1.1.43 **County Consultant.** "County Consultant" means a consultant, other than Architect, engaged by County (or engaged as a subconsultant to the Architect or a County Consultant) to provide professional advice to County with respect to the design, construction or management of the Project.

1.1.44 **County Review Date.** "County Review Date" means an end date set forth in the Construction Schedule or Submittal Schedule within which County, Architect or a County Consultant is to provide information, review documents or render decisions, approvals or disapprovals.

1.1.45 **County Review Period.** "County Review Period" means a period of time set forth in the Construction Schedule or Submittal Schedule within which County, Architect or a County Consultant is to provide information, review documents or render decisions, approvals or disapprovals.

1.1.46 **County Risk Manager.** "County Risk Manager" means the individual employee of the County acting as its risk manager.

1.1.47 **County Website.** "County Website" means the website maintained by County at <http://www.rivcoeda.org>.

1.1.48 **Date of Commencement.** "Date of Commencement" means the starting date used for calculation of the Contract Time, and is the date, no earlier than the first working day following issuance of the Notice to Proceed, that is fixed in the Notice to Proceed issued by the County or, if no Notice to Proceed is issued, the Day that the Contractor actually commences Work at the Site in accordance with Paragraph 8.1.1, below.

1.1.49 **Day.** "Day", whether capitalized or not, and unless otherwise specifically provided, means calendar day, including weekends and Holidays.

1.1.50 **Declaration of Sufficiency of Funds.** "Declaration of Sufficiency of Funds" means the declaration, in the form included in the Bidding Documents, required to be submitted by Contractor under circumstances where Contractor has not executed a collective bargaining agreement covering the workers who will be employed to perform the Work.

1.1.51 **Defective Work.** "Defective Work" means materials, equipment, labor, workmanship, construction services or other construction work comprising the Work by Contractor or a Subcontractor that (1) is faulty, omitted, incomplete, or deficient, or (2) does not conform to Applicable Laws, the Contract Documents, or the requirements of any inspection, reference standard, test, code or approval specified in the Contract Documents.

1.1.52 **Delay.** "Delay" means any circumstances involving delay, disruption, hindrance or interference.

1.1.53 **Deleted Work.** "Deleted Work" means Work that is eliminated or its scope or cost reduced pursuant to a Change Order or Unilateral Change Order.

1.1.54 **Department of Industrial Relations.** "Department of Industrial Relations" means The Department of Industrial Relations of the State of California.

1.1.55 **Design Discrepancy.** "Design Discrepancy" means an error, omission, conflict, ambiguity, lack of coordination or noncompliance with Applicable Laws contained in the Bidding Documents, Contract Documents, Reference Documents or other information made available by County to Contractor prior to or after the Bid Closing Deadline.

1.1.56 **Design Documents.** "Design Documents" means all originals, copies and drafts of plans, drawings, tracings, specifications, programs, reports, calculations, presentation materials, models, building information models and other writings or materials containing designs, specifications or engineering information related to the Work or Project prepared by Architect, County Consultants, Contractor, Separate Contractors or Subcontractors including, without limitation, computer aided design materials, electronic data files and paper copies. The term "Design Documents" includes both the written documents and all building and other designs depicted therein.

1.1.57 Design Intent. "Design Intent" means the general intended design objectives of the Design Documents prepared by Architect and County Consultants, as described in Paragraph 1.2.1, below.

1.1.58 Designation of Subcontractors. "Designation of Subcontractors" means the list of proposed Subcontractors prepared by the Bidder pursuant to California Public Contract Code §§4100 et seq.

1.1.59 Differing Site Condition. "Differing Site Condition" means an unforeseen condition that constitutes a basis for Contract Adjustment pursuant to Paragraph 4.3.8, below.

1.1.60 Disability Laws. "Disability Laws" means applicable federal, state, local or municipal laws, rules, orders, regulations, statutes, ordinances, codes, decrees, or requirements of any Government Authority, which regulate, relate to or impose liability or standards of conduct with respect to, or accessibility for, persons with disabilities, including, without limitation, the Americans with Disabilities Act (42 USCA §§ 12101 et seq.) and the Fair Housing Amendments Act of 1988 (42 USCA §§ 3604 et seq.).

1.1.61 Discovery Date. "Discovery Date", generally used in reference to Contractor's obligation to give written notice of certain facts, conditions or circumstances, means the earlier of the dates that Contractor or any Subcontractor either: (1) discovered such facts, conditions or circumstances; or (2) should have discovered such facts, conditions or circumstances in the exercise of the level of care required by the terms of the Standard of Performance.

1.1.62 Drawings. "Drawings" means graphic and pictorial documents showing the design, location and dimensions of the Project, and generally includes plans, elevations, subparagraphs, details, schedules and diagrams. The term "Drawings" is used interchangeably with "Plans".

1.1.63 EDA. "EDA" means the Economic Development Agency for the County of Riverside.

1.1.64 Environmental Laws. "Environmental Laws" means all applicable federal, state, local or municipal laws, rules, orders, regulations, statutes, ordinances, codes, decrees and permits or other requirements of any Governmental Authority, which regulate, relate to, or impose liability or standards of conduct concerning any Hazardous Substance (including, without limitation, the use, handling, transportation, production, disposal, discharge or storage thereof), occupational or environmental conditions on, under, or about the Site or Existing Improvements (including, without limitation, soil, groundwater, and indoor and ambient air conditions), environmental protection (natural or manmade resources), or occupational health or industrial hygiene (but only to the extent related to Hazardous Substances on, under, or about the Site or Existing Improvements), as now or may at any later time be in effect, including without limitation, the Comprehensive Environmental Response, Compensation and Liability Act of 1980 [42 U.S.C.A. §§ 9601 et seq.]; the Resource Conservation and Recovery Act of 1976 [42 U.S.C.A. §§ 6901 et seq.]; the Clean Water Act (also known as the Federal Water Pollution Control Act) [33 U.S.C.A. §§ 1251 et seq.]; the Toxic Substances Control Act [15 U.S.C.A. §§ 2601 et seq.]; the Hazardous Substances Transportation Act [49 U.S.C.A. §§ 1801 et seq.]; the Insecticide, Fungicide, Rodenticide Act [7 U.S.C.A. §§ 136 et seq.]; the Superfund Amendments and Reauthorization Act [42 U.S.C.A. §§ 6901 et seq.]; the Clean Air Act [42 U.S.C.A. §§ 7401 et seq.]; the Safe Drinking Water Act [42 U.S.C.A. §§ 300f et seq.]; the Solid Waste Disposal Act [42 U.S.C.A. §§ 6901 et seq.]; the Surface Mining Control and Reclamation Act [30 U.S.C.A. §§ 1201 et seq.]; the Emergency Planning and Community Right to Know Act [42 U.S.C.A. §§ 11001 et seq.]; the Occupational Safety and Health Act [29 U.S.C.A. §§ 655 and 657]; the Residential Lead-Based Paint Exposure Act (Title X of the Housing and Community Development Act of 1992) [15 U.S.C.A. §§ 2681 et seq.]; the Lead-Based Paint Poisoning Prevention Act [42 U.S.C.A. §§ 4821 et seq.]; the Federal Endangered Species Act, the California Endangered Species Act, the Migratory Bird Treaty Act, the National Environmental Policy Act, the California Environmental Quality Act, Porter Cologne Water Quality Act (California Water Code §§ 13000 et seq.), and all similar federal, state or local laws, rules, orders, regulations, statutes, ordinances, codes, decrees, or requirements.

1.1.65 Escrow Agent. "Escrow Agent" means an entity serving as escrow agent pursuant to California Public Contract Code §22300 in connection with the deposit of securities or retention.

1.1.66 Escrow Bid Documents. "Escrow Bid Documents" means all written documentation and electronic files reflecting the basis for and calculation of a Bid, including, without limitation, estimates, quantity take-offs, price quotations, product data, pricing data, memoranda, narratives, add/deduct sheets and reports (including, without

limitation, reports on conditions at, under, or in the vicinity of the Site). The term "Escrow Bid Documents" does not include copies of Bidding Documents if they are not needed to comply with the requirements of the Bidding Documents applicable to submission of Escrow Bid Documents.

1.1.67 Event of Contractor Default. "Event of Contractor Default" means any of the events constituting default by Contractor as set forth in Paragraph 15.1.1, below.

1.1.68 Evidence of Insurance. "Evidence of Insurance" means the statement, completed by Bidder in the form included in the Bidding Documents, evidencing the Bidder's compliance with the insurance requirements of the Bidding Documents.

1.1.69 Excusable Delay. "Excusable Delay" means a Delay, other than a Compensable Delay, to Contractor's ability to achieve Substantial Completion or Final Completion of the Work within the Contract Time that is: (1) not caused, in whole or in part, by an act or omission of Contractor or a Subcontractor, of any Tier, constituting negligence, willful misconduct, a violation of an Applicable Law or a failure by Contractor or any Subcontractor, of any Tier, to comply with the Contract Documents; (2) unforeseeable, unavoidable and beyond the control of Contractor and the Subcontractors, of every Tier; and (3) the result of a Force Majeure Event. Without limitation to the foregoing, neither the bankruptcy, insolvency nor financial inability of Contractor or a Subcontractor, of any Tier, nor any failure by a Subcontractor, of any Tier, to perform any obligation imposed by contract or Applicable Laws shall constitute a ground for Excusable Delay.

1.1.70 Existing Improvements. "Existing Improvements" means all improvements located on the Site as of the Bid Closing Deadline, whether above or below the surface of the ground, including, but not limited to, existing buildings, utilities, infrastructure improvements and other facilities.

1.1.71 Extra Work. "Extra Work" means labor, materials, equipment, services or other work, not reasonably inferable by Contractor or its Subcontractors from the design and other information set forth in the Bidding Documents, the performance of which requires the expenditure by Contractor of additional and unforeseen Allowable Costs. References to Extra Work shall not be interpreted to mean or imply that Contractor is entitled to a Contract Adjustment unless such Extra Work constitutes a Compensable Change.

1.1.72 Final Completion, Finally Complete. "Final Completion" and "Finally Complete" mean the point at which the following conditions have occurred with respect to the entire Work:

- .1** the Work is fully completed, including all minor corrective, or "punch list," items;
- .2** all permits, approvals and certificates by Governmental Authorities, such as, but not necessarily limited to, a permanent or temporary certificate of occupancy required to occupy and use the Work have been issued free of any conditions that are the result of an act or omission of Contractor or a Subcontractor, of any Tier, constituting negligence, willful misconduct, a violation of an Applicable Law or a failure by Contractor or any Subcontractor, of any Tier, to comply with the Contract Documents;
- .3** the Work and the related portions of the Site have been thoroughly cleared of all construction debris and cleaned in accordance with the requirements of the Contract Documents, including, but not necessarily limited to where applicable, the following: removal of temporary protections; removal of marks, stains, fingerprints and other soil and dirt from painted, decorated and natural-finished woodwork and other Work; removal of spots, plaster, soil and paint from ceramic tile, marble and other finished materials; all surfaces, fixtures, cabinet work and equipment are wiped and washed clean and in an undamaged, new condition; all aluminum and other metal surfaces are cleaned in accordance with recommendations of the manufacturer; and all stone, tile and resilient floors are cleaned thoroughly in accordance with the manufacturer's recommendations and buff dried by machine to bring the surfaces to sheen;
- .4** all conditions set forth in the Contract Documents for Substantial Completion of the Work have been, and continue to be, fully satisfied;

.5 all conditions pertaining to the Work and required for the release of County's obligations (including, but not limited to, release of County's bond obligations) to Governmental Authorities (including, but not limited to, matters involving grading, flood control, public works, transportation and traffic) have been satisfied; and

.6 Contractor has delivered to County all Close-Out Documents.

1.1.73 Final Completion Punch List. "Final Completion Punch List" means the list of minor items of Work to be completed or corrected by Contractor for Final Completion.

1.1.74 Final Payment. "Final Payment" means payment by County to Contractor of the entire unpaid balance of the Contract Price due to Contractor following Final Completion.

1.1.75 Force Majeure Event. "Force Majeure Event" means, and is restricted to, any the following: (1) Acts of God occurring at the Site; (2) terrorism or other acts of a public enemy; (3) orders of Governmental Authorities (including, without limitation, unreasonable and unforeseeable Delay in the issuance of permits or approvals by Governmental Authorities that are required for the Work); (4) epidemics or quarantine restrictions; (5) strikes and other organized labor action occurring at the Site and the effects thereof on the Work to the extent such strikes and other organized labor action are beyond the control of Contractor and its Subcontractors, of every Tier, and to the extent the effects thereof cannot be avoided by use of replacement workers or implementation of a dual gate system of entry to the Site; or (6) unusual shortages in materials that are supported by documented proof that (a) Contractor made every effort to obtain such materials from all available sources, (b) such shortage is due to the fact that such materials are not physically available from single or multiple sources or could have been obtained only at exorbitant prices entirely inconsistent with current rates taking into account the quantities involved and the usual industry practices in obtaining such quantities, and (c) such shortages and the difficulties in obtaining alternate sources of materials could not have been known or anticipated as of the Bid Closing Deadline.

1.1.76 Fragnet. "Fragnet" means a contemporaneous, fragmentary scheduling network, which graphically identifies the sequencing of all critical and non-critical new activities and/or activity revisions affected by a Compensable Delay or Excusable Delay with logic ties to all affected existing activities noted on the Construction Schedule, that isolates and quantifies a time impact of a specific issue, determines and demonstrates any such specific Delay in relation to past and/or other current Delays and provides a method for incorporating all Contract Adjustments to the Contract Time into an update of the approved Construction Schedule.

1.1.77 General Conditions. "General Conditions" means the herein set forth general terms and conditions governing performance of the Work.

1.1.78 General Requirements. "General Requirements" means the portion of the Specifications so titled setting forth additional requirements for administration of the Work.

1.1.79 Good Faith Determination. "Good Faith Determination" means a determination made by the Assistant CEO/EDA or other authorized representative of County, which he/she believes in good faith to be a proper exercise of County's rights and to have a reasonable basis in fact, whether or not such determination is in fact proper, reasonable or correct or adjudged to be so.

1.1.80 Governmental Authority. "Governmental Authority" means the United States, the State of California, the County of Riverside (acting in its regulatory, rather than proprietary, capacity), the City in which the Project is located, any other local, regional, state or federal political subdivision, authority, agency, department, commission, board, bureau, court, judicial or quasi-judicial body, and any legislative or quasi-legislative body, or instrumentality of any of them, which exercises jurisdiction over the Project, Work, Site, Contractor or County, including, without limitation, any Governmental Authority having jurisdiction to review and approve or reject the Contract Documents or the Work based on compliance or non-compliance with Applicable Laws.

1.1.81 Governmental Authority Review Period. "Governmental Authority Review Period" means a period of time set forth in the Construction Schedule or Submittal Schedule for Governmental Authority review, and/or approval, of the Work.

1.1.82 Guarantee To Repair Period. "Guarantee To Repair Period" means the period of time set forth in Section 13.3, below, for repair or replacement of Defective Work.

1.1.83 Hazardous Substance. "Hazardous Substance" means either of the following: (1) any chemical, material or other substance defined as or included within the definition of "hazardous substances," "hazardous wastes," "extremely hazardous substances," "toxic substances," "toxic material," "restricted hazardous waste," "special waste," "contamination" or words of similar import under any Environmental Law, including, without limitation, the following: petroleum (including crude oil or any fraction thereof), asbestos, asbestos-containing materials, polychlorinated biphenyls ("PCBs") and PCB-containing materials, whether or not occurring naturally; or (2) any substance that because of its quantity, concentration or physical or chemical characteristics poses a significant present or potential hazard to human health and safety or to the environment, and which has been determined by any Governmental Authority to be a hazardous waste or hazardous substance.

1.1.84 Holiday. "Holiday" means a Day recognized by County as being a legal holiday for its staff and employees.

1.1.85 Indemnitees. "Indemnitees" means those persons or entities listed in Paragraph 3.18.1, below, as the "Indemnitees".

1.1.86 Inspector of Record. "Inspector of Record" means a person designated by the County to perform inspections on behalf of the County, who may be an employee or an independent consultant to County.

1.1.87 Installation Subcontractor. "Installation Subcontractor" means a Subcontractor who performs a portion of the Work that includes providing substantial, rather than minor and incidental, services for the installation of temporary or permanent materials, equipment or facilities at the Site.

1.1.88 Instructions to Bidders. "Instructions to Bidders" means the portion of the Bidding Documents setting forth the requirements to be followed by Bidders in preparing and submitting Bids.

1.1.89 Intellectual Property Rights. "Intellectual Property Rights" means all intellectual property rights, including, without limitation, patent, trademark, trade dress, copyright, industrial design rights, priority rights and trade secrets.

1.1.90 Key Personnel, Key Persons. "Key Personnel" and "Key Persons" mean those individuals employed by Contractor as described in Paragraph 3.8.1, below, and any replacements thereto approved by County, whose personal performance is deemed of the essence to the Construction Contract.

1.1.91 Loss, Losses. "Loss" and "Losses" mean any and all economic and non-economic losses, costs, liabilities, claims, damages, cost escalations, actions, judgments, settlements, expenses, fines, penalties and punitive damages including, without limitation, full and actual attorney's fees (including, without limitation, attorney's fees for trial and on appeal), expert and non-expert witness fees, arbitrator and arbitration fees, court costs (statutory and non-statutory), and mediation and mediator fees.

1.1.92 Modification. "Modification" means a document, other than a Change Order or Construction Change Directive, approved and signed by County and Contractor after execution of the Construction Contract, agreeing to alter, amend or modify the Contract Documents.

1.1.93 Mold. "Mold" means mold, mildew, spores or other microorganisms of any type, nature or description, or any by-product thereof, the presence of which poses an actual or potential threat to human health, including, without limitation, any species of organisms of the kingdoms of fungi or mycota, including yeasts, smuts, rusts, mildews, mold and mushrooms, or any microbial contamination, either airborne or surface, which arises out of or is related to the presence of fungi or spores (including, without limitation, aspergillus, cladosporium, penicillium and stachybotrys chartarum).

1.1.94 Non-Collusion Declaration. "Non-Collusion Declaration" means the form, so titled, required by California Public Contract Code §7106 and the Bidding Documents to be submitted by Bidder with its Bid.

1.1.95 Notice Inviting Bids. "Notice Inviting Bids" means the notice issued by or on behalf of County inviting submission of Bids for the Project.

1.1.96 Notice Inviting Prequalification Statements. "Notice Inviting Prequalification Statements" means the formal notice issued by County inviting contractors to participate in County's process for Prequalification of Bidders.

1.1.97 Notice of Change. "Notice of Change" means a formal written notice required to be submitted by Contractor pursuant to Paragraph 7.6.1, below, notifying County of circumstances that Contractor believes may give rise to a Contract Adjustment.

1.1.98 Notice of Completion. "Notice of Completion" means a "notice of completion" as defined in California Civil Code §9204.

1.1.99 Notice of Delay. "Notice of Delay" means a formal written notice prepared and submitted by Contractor pursuant to Paragraph 8.2.2, below, notifying County of circumstances that Contractor believes may give rise to a Contract Adjustment to the Contract Time for Excusable Delay or Compensable Delay or a Contract Adjustment to the Contract Price for Compensable Delay.

1.1.100 Notice of Final Completion. "Notice of Final Completion" means the written notice by County confirming the date of actual Final Completion.

1.1.101 Notice of Intent to Award. "Notice of Intent to Award" means the written notice by or on behalf of County stating County's intent to Award the Construction Contract.

1.1.102 Notice of Substantial Completion. "Notice of Substantial Completion" means the written notice by County confirming the date of actual Substantial Completion.

1.1.103 Notice to Proceed. "Notice to Proceed" means the written notice issued by County to Contractor to begin the Work.

1.1.104 Payment Bond, Performance Bond. "Payment Bond" and "Performance Bond" mean the surety bonds required to be provided by Contractor pursuant to Article 12, below.

1.1.105 Plans. "Plans" means the graphic and pictorial portions of the Contract Documents prepared by Architect or its Subconsultants showing the design, location and dimensions of the Work, including, without limitation, plans, elevations, details, schedules and diagrams. The term "Plans" is used interchangeably with "Drawings".

1.1.106 Post-Award Submittals. "Post-Award Submittals" means the documents described in the Bidding Documents that the apparent successful Bidder is required to submit after opening of Bids as a condition of Award.

1.1.107 Pre-Bid Conference. "Pre-Bid Conference" means the conference, specified in the Notice Inviting Bids as either mandatory or optional, held prior to the Bid Closing Deadline for the purpose of, without limitation, introducing the Bidders to the Project, and which conference may, or may not, include a review of the Site.

1.1.108 Prequalification. "Prequalification" means a process for Prequalification of contractors for bidding that is conducted by County pursuant to California Public Contract Code §20101 or as otherwise permitted by Applicable Laws.

1.1.109 Prequalification Documents. "Prequalification Documents" means the collection of documents issued to and submitted by individuals or entities pursuant to a Prequalification conducted by County.

1.1.110 Prequalified Bidder. "Prequalified Bidder" means a contractor that is prequalified as part of a Prequalification conducted by County pursuant to Public Contract Code §20101.

1.1.111 Product Data. "Product Data" means illustrations, standard schedules, charts, instructional brochures, diagrams and other information furnished by Contractor to illustrate a material, product or system for the Work.

1.1.112 Progress Payment. "Progress Payment" means a monthly payment of a portion of the Contract Price prior to Final Completion based on Contractor's progressed performance of the Work.

1.1.113 Project. "Project" means the improvements comprising, or necessary or appurtenant to the use of, the work of improvements described generally in the Bidding Documents, of which the Work may be the entirety of such improvements or only a part.

1.1.114 Project Documents. "Project Documents" means all writings (hard copy and electronic) in the possession of Contractor at the Site or elsewhere that relate in any way to the Project or Work.

1.1.115 Project Team. "Project Team" means County, Architect, County Consultants, Contractor, the Subcontractors, the Separate Contractors, Inspectors of Record and other firms or individuals retained by County, or retained by others with County's approval, participating in the planning, programming, design, construction or inspection of the Work.

1.1.116 Reasonable Order of Magnitude Estimate. "Reasonable Order of Magnitude Estimate" means a general estimate prepared by Contractor, or jointly by Contractor and County, without the benefit of complete or definitive pricing by Subcontractors, of the projected additional cost and time associated with Contractor's performance of a particular item or items of Extra Work or Deleted Work described in a Construction Change Directive. Unless otherwise agreed to in writing between County and Contractor, a Reasonable Order of Magnitude Estimate does not constitute either an authorization or agreement by County to any Contract Adjustment or a guarantee or promise by Contractor with respect to the amount of any Contract Adjustment that may be associated with a Compensable Change or Deleted Work.

1.1.117 Record Documents. "Record Documents" means the collection of documents assembled and prepared by Contractor (including, without limitation, the Record Drawings and Specifications) showing the condition of the Work as actually built.

1.1.118 Record Drawings, Record Specifications. "Record Drawings" and "Record Specifications" mean the Drawings and Specifications marked by Contractor to show the condition, location and placement of the Work as actually built, including, without limitation, the locations of mechanical, electrical, plumbing or similar portions of the Work that are depicted diagrammatically in the Drawings.

1.1.119 Reference Documents. "Reference Documents" means reports, studies, surveys and other information provided by County for Contractor's review and consideration in preparing its Bid, including, without limitation, information describing the Site (including surface or subsurface conditions), Existing Improvements or Hazardous Substances at the Site.

1.1.120 Request for Extension. "Request for Extension" means a formal written request submitted by Contractor pursuant to Paragraph 8.2.3, below, setting forth the justification and support for Contractor's request for a Contract Adjustment to the Contract Time.

1.1.121 Request for Information. "Request for Information" means a written request by Contractor for clarification of what it perceives to be a discrepancy in the Contract Documents (including, without limitation, information in the Contract Documents constituting a Design Discrepancy or a variance between the information in the Bidding Documents or Contract Documents and conditions at the Site or in Existing Improvements).

1.1.122 Safety Program. "Safety Program" means the formal, written program prepared by Contractor setting forth detailed procedures and precautionary measures for protecting persons and property from injury or damage.

1.1.123 Samples. "Samples" means physical examples that, when approved by County and Architect, illustrate materials, equipment or workmanship by which the Work is to be evaluated and judged as part of the Submittal process.

1.1.124 Schedule of Values. "Schedule of Values" means a detailed, itemized breakdown of the Contract Price, which provides for an allocation of the dollar values to each of the various parts of the Work.

1.1.125 Self-Performed Work. "Self-Performed Work" means Work related to a Compensable Change or Deleted Work that is performed or to be performed by Contractor's own laborers who are employed by Contractor, rather than by the employees of a Subcontractor, using materials and equipment purchased by Contractor directly from a supplier or manufacturer.

1.1.126 Separate Contractor. "Separate Contractor" means a contractor, subcontractor, supplier or vendor under contract directly to County to provide services, materials, labor, equipment or other work to the Project.

1.1.127 Shop Drawing. "Shop Drawing" means a drawing, diagram, schedule and other data specially prepared for the Work by Contractor or a Subcontractor to illustrate some portion of the Work.

1.1.128 Site. "Site" means: (1) the parcel of land owned by County on which the Project is to be constructed and such additional parcels as may be purchased by County for such construction; (2) all areas adjacent to such parcels that may be used by Contractor or the Subcontractors for staging, storage, parking or temporary offices; and (3) all land areas, both private and public, adjacent to such parcels on which Work is required to be performed under the Contract Documents, Applicable Laws or permits relating to the Project.

1.1.129 Specifications. "Specifications" means the portion of the Contract Documents consisting of the written requirements for materials, equipment, standards and workmanship for the Work and performance of related services.

1.1.130 Standard of Performance. "Standard of Performance" means the general standard governing Contractor's performance of its obligations under the Construction Contract and General Conditions as set forth in Section 2.2 of the Construction Contract.

1.1.131 State Water Resources Control Board. "State Water Resources Control Board" means the State Water Resources Control Board of the State of California.

1.1.132 Storm Water Permit. "Storm Water Permit" means any applicable storm water, urban runoff or statewide general NPDES permit issued by the State of California or the United States pursuant to the provisions of the Clean Water Act (Title 33 U.S.C. §§1251 et seq.) and/or Porter Cologne Water Quality Control Act (California Water Code §§13000 et seq.) and including any related regulations issued by the State of California or the United States.

1.1.133 Sub-Bidder. "Sub-Bidder" means a person or entity that submits a bid to a Bidder for some portion of the Work that is to be performed by that person or entity acting as a first-Tier Subcontractor.

1.1.134 Subcontractor. "Subcontractor" means a person or entity that has a contract to perform a portion of the Work, including without limitation, subcontractors, sub-subcontractors, suppliers, equipment operators, manufacturers and vendors, of any and every Tier.

1.1.135 Submittal. "Submittal" means a Shop Drawing, Product Data, Sample, detailed design, exemplar, fabrication and installation drawing, list, graph, operating instruction or other document required to be submitted by Contractor under the Contract Documents.

1.1.136 Submittal Schedule. "Submittal Schedule" means the schedule prepared by Contractor showing the timing for submission and review of Submittals during construction.

1.1.137 Substantial Completion, Substantially Complete. "Substantial Completion" and "Substantially Complete" mean the point at which the following conditions have occurred with respect to the entire Work or a portion

of the Work designated by County in writing to be Substantially Completed prior to Substantial Completion of the entire Work:

.1 such Work is sufficiently and entirely complete in accordance with Contract Documents so that such Work can be fully enjoyed and beneficially occupied and utilized by County for its intended purpose (except for minor items which do not impair County's ability to so occupy and use such Work);

.2 all permits, approvals and certificates by Governmental Authorities, such as, but not necessarily limited to, a permanent or temporary certificate of occupancy required to occupy and use such Work have been issued free of any conditions that are the result of an act or omission of Contractor or a Subcontractor, of any Tier, constituting negligence, willful misconduct, a violation of an Applicable Law or a failure by Contractor or any Subcontractor, of any Tier, to comply with the Contract Documents; and

.3 all building systems included in such Work are operational as specified, all designated or required inspections and certifications by Governmental Authorities have been made and posted and instruction of County's personnel in the operation of the systems has been completed.

1.1.138 Substantial Completion Punch List. "Substantial Completion Punch List" means the list of items of Work to be completed or corrected by Contractor for Substantial Completion.

1.1.139 Substitution. "Substitution" means a material, product or item of material or equipment proposed by the Bidder or Contractor in place of that specified in the Bidding Documents or Contract Documents.

1.1.140 Substitution Request Form. "Substitution Request Form" means the form, so titled, that is included in the Bidding Documents for use by the Bidders when requesting a Substitution.

1.1.141 Supplementary Conditions. "Supplementary Conditions" means those portions of the Specifications that supplement, by addition, modification or deletion, a specific portion of the General Conditions.

1.1.142 Surety. "Surety" means Contractor's surety(ties) issuing the Bid Bond, Performance Bond or Payment Bond.

1.1.143 Tier. "Tier" means the contractual level of a Subcontractor with respect to Contractor. For example, a "first-tier" Subcontractor is under contract with Contractor. A sub-subcontractor under contract with a first-tier Subcontractor is in the "second tier," and so on. Use of the phrase "of every Tier", or similar phraseology, in the Contract Documents shall not be interpreted as implying that other provisions of the Contract Documents, where such phrase is not used, are intended to be limited in application to only the first Tier or to only certain other Tiers of Subcontractors.

1.1.144 Time Impact Analysis. "Time Impact Analysis" means a written report evaluating the impact of an Excusable or Compensable Delay, which shall include, at a minimum, the following: (1) a narrative description of the Delay and its impact on the critical path to achievement of a Substantial Completion or Final Completion of the Work or a portion of the Work designated by County within the Contract Time; (2) a Fragnet; (3) the number of Days of extension sought by Contractor as a Contract Adjustment to the Contract Time; (4) a computation of the Days of Compensable Delay multiplied times the liquidated damages payable to Contractor pursuant to Section 3.3 of the Construction Contract, if any, sought by Contractor; (5) a statement that Contractor has complied with the requirements of the General Conditions for written notice of Delays, along with the dates and copies of such notices; (6) the measures taken by Contractor and Subcontractors to prevent or minimize the Delay; and (7) Contractor's recommendations for reordering or re-sequencing the Work to avoid or minimize further Delay.

1.1.145 Unexcused Delay. "Unexcused Delay" means any Delay that is not a Compensable Delay or Excusable Delay or that constitutes a Compensable Delay or Excusable Delay for which Contractor is not entitled to a Contract Adjustment to the Contract Time, including, without limitation, the following: (1) Delay caused by an act or omission of Contractor or a Subcontractor, of any Tier, constituting negligence, willful misconduct, a violation of an Applicable Law or a failure by Contractor or any Subcontractor, of any Tier, to comply with the Contract Documents; (2) Delay for which Contractor has failed to provide a timely and complete Notice of Delay or Request for Extension;

or (3) Delay associated with any circumstances where the costs or risk associated with such circumstances are designated in the Contract Documents as being at Contractor's risk or Contractor's Own Expense.

1.1.146 Unilateral Change Order. "Unilateral Change Order" means a writing signed by County in accordance with Article 7, below, in which County unilaterally sets forth its Good Faith Determination of the undisputed portion of an otherwise disputed Contract Adjustment.

1.1.147 Work. "Work" means all labor, materials, equipment, services, permits, licenses, taxes and other things necessary for Contractor to perform its obligations under the Contract Documents, including, without limitation, any Changes requested by County, in accordance with the Contract Documents and all Applicable Laws. The Work may constitute the whole or a part of the Project.

1.1.148 Worker's Compensation Certificate. "Worker's Compensation Certificate" means the statement, completed by Bidder in the form included in the Instruction to Bidders, evidencing the Bidder's compliance with the worker's compensation insurance requirements of the Bidding Documents and Applicable Laws.

1.2 CORRELATION, INTERPRETATION AND INTENT OF CONTRACT DOCUMENTS

1.2.1 Design Intent. The intent of the Contract Documents is for Contractor to provide all items necessary to produce a work of improvement that is complete as a whole and that is, in all of its parts, suitable for use and occupancy for its intended purpose, including, without limitation, all equipment, casework, mechanical, electrical and similar devices of whatever nature, completely installed, hooked-up and made fully operational and functional.

1.2.2 Complementary. Contract Documents are complementary, and what is called for by one shall be as binding as if called for by all. Any Work called for on the Drawings and not mentioned in the Specifications, or vice versa, shall be performed as though fully set forth in both.

1.2.3 Technical Words. Unless otherwise stated in the Contract Documents, technical words and abbreviations contained in the Contract Documents are used in accordance with commonly understood construction industry meanings and non-technical words and abbreviations are used in accordance with their commonly understood meanings.

1.2.4 Trade Names. It is not the intention of the Contract Documents to go into detailed descriptions of any materials or methods commonly known to the trade under a "trade name" or "trade term." The mere mention or notation of such "trade name" or "trade term" shall be considered a sufficient notice to the Contractor that it will be required to complete the Work so named with all its appurtenances according to first-class practices of the trade.

1.2.5 Incidental Items. The naming of any material or equipment shall mean furnishing and installing of same, including all incidental and accessory items thereto and labor therefor, in accordance with first-class practices of the trade involved, unless specifically noted otherwise.

1.2.6 Drawing Dimensions. Figured, derived or numerical dimensions on scale Drawings shall govern over Drawings without figured dimensions. The Drawings shall not be scaled to determine dimensions, and (except in the case of diagrammatic Drawings) dimensions shall be calculated from figures shown on the Drawings. Obvious discrepancies between scale and figured dimensions, not marked "not to scale," must be brought to the Architect's attention before proceeding with the Work affected by the discrepancy. Contractor shall carefully check and compare all portions of the Drawings and Specifications so as to correctly interpolate the intended dimensions for any portion of the Work that is not explicitly dimensioned in the Contract Documents.

1.2.7 Drawings, Specifications. In general, the Drawings will show dimensions, positions, and kind of construction and the Specifications will define materials, quality and standards. Work not particularly shown, detailed, marked or specified shall be the same as similar parts that are shown, detailed, marked or specified.

1.2.8 Typical Work. Work not particularly shown, detailed, marked or specified shall be the same as similar parts that are shown, detailed, marked or specified.

1.2.9 Divisions of the Work. All the Work mentioned or indicated in the Contract Documents shall be performed by Contractor as part of the Work unless specifically indicated in the Contract Documents to be done by others. The organization of the Specifications into divisions, sections and articles and the arrangement of the Drawings shall not control Contractor in dividing the Work among the Subcontractors or in establishing the extent of the Work to be performed by the Subcontractors.

1.2.10 Applicable Laws. Compliance with Applicable Laws shall be considered as a part of the Work.

1.2.11 Interpretations of Laws. In the event of a conflict between or among Applicable Laws governing performance of the Work, the more stringent shall govern. Contractor assumes, at Contractor's Own Expense, sole responsibility for, and the risk associated with, interpretations of Applicable Laws made by Contractor not predicated on written orders issued by Governmental Authorities that by their terms are applicable to the Project, including, without limitation, interpretations or assumptions made by Contractor based on decisions, orders or approvals (written or unwritten) issued by or on behalf of Governmental Authorities in connection with work on other projects or properties near or in the general vicinity of the Site.

1.2.12 Modifiers. The Contract Documents may omit modifying words such as "all" and "any," and articles such as "the" and "an." If a modifier or an article is not included in one statement and appears in another, it is not intended to affect the interpretation of either statement. The use of the word "including," when following any general statement, shall not be construed to limit such statement to specific items or matters set forth immediately following such word or to similar items or matters whether or not non-limiting language (such as "without limitation," "but not limited to," or words of similar import) is used with reference thereto, but rather shall be deemed to refer to all other items or matters that could reasonably fall within the broadest possible scope of such general statement.

1.2.13 Singular, Gender, Captions. When appropriate to the context, the use of the singular number shall be deemed to include the plural and vice versa. Each gender shall be deemed to include any other gender, and each shall include corporation, partnership, trust or other legal entity whenever the context so requires. The captions and headings of the various subdivisions of the Contract Documents are intended only as a matter of reference and convenience and in no way define, limit, or prescribe the scope or intent of the Contract Documents or any subdivision thereof.

1.2.14 Cross-References. Any cross-references indicated between various paragraphs or other portions of the Specifications, Drawings or other Contract Documents are provided for the convenience of Contractor and shall not be deemed to be all-inclusive.

1.2.15 Diagrammatic Design. Drawings and diagrams for mechanical, plumbing, electrical, fire sprinkler, fire alarm and low voltage Work shall be considered as diagrammatic only and shall not be used for any structural guidance or physical layout. Because such Drawings are diagrammatic, Contractor shall be responsible to provide any and all numbers and lengths of fittings, wire, conduit, connections, attachments or similar materials or devices needed to complete the Work, without Contract Adjustment, whether or not they exceed the numbers of pieces or the lengths indicated by such Drawings. Contractor is solely responsible to carefully plan and coordinate in advance, by means of coordination drawings prepared by Contractor or a Subcontractor, the installation of any Work shown diagrammatically and shall do so in such a manner as to make maximum use of the space available and anticipate and avoid wherever possible conflict and interferences among such portions of the Work and with other portions of the Work, including structural members.

1.2.16 Demolition. Existing Improvements at the Site of which no specific description is made in the Contract Documents, but which could be reasonably assumed to interfere with the satisfactory completion of the Work, shall be removed and disposed of by Contractor without Contract Adjustment. If Contractor is unsure whether a specific Existing Improvement at the Site which is not specifically described in the Contract Documents should be removed and disposed of, Contractor shall promptly ask the County whether such Existing Improvement is to be removed or remain in place, and shall comply with any directive given in response.

1.2.17 Omissions. Items missing from the Contract Documents shall nevertheless be provided by the Contractor, without Contract Adjustment, to the extent reasonably inferable from the Contract Documents as being necessary to satisfy the Design Intent.

1.2.18 Conflicts. Notwithstanding the provisions of Paragraph 1.2.19, below, in the event of conflict between any of the Contract Documents, the provision placing a more stringent requirement or greater burden on the Contractor or requiring the greater quantity or higher quality material or workmanship shall prevail, unless otherwise directed by the County in writing.

1.2.19 Order of Precedence. Conflicts that cannot be resolved in accordance with the rules of interpretation set forth elsewhere in this Section 1.2, shall be interpreted in accordance with the following order of precedence (the first being the highest order of precedence):

.1 Applicable Laws (provided, however, and notwithstanding Subparagraph 1.2.19.10, below, where the Contract Documents or manufacturer's recommendations or specifications require standards higher than those of Applicable Laws, the Contract Documents or manufacturer's recommendations or specifications shall control);

.2 Change Orders, Unilateral Change Orders and Construction Change Directives;

.3 Addenda;

.4 Construction Contract;

.5 Supplementary Conditions;

.6 General Conditions;

.7 General Requirements;

.8 Specifications;

.9 Drawings, subject to the following: (1) large scale plans and details take precedence over small scale Drawings in all cases; (2) full scale Drawings have precedence over both large and small scale Drawings in all cases; (3) detailed Plans and/or Drawings shall have precedence over general Plans and/or Drawings; (4) architectural and structural Drawings take precedence over electrical and mechanical Drawings in regard to location and arrangement of fixtures, outlets, and equipment; and (5) electrical and mechanical Drawings take precedence in describing and specifying equipment and in describing the diagrammatic requirements;

.10 standard and reference specifications which include industry norms, such as, but not limited to, ANSI and ASTM; and

.11 Reference Documents.

1.2.20 Conditions Precedent. Wording used in the Contract Documents indicating that a right of the Contractor or an obligation of the County is subject to or conditioned upon the occurrence of a condition or event, whether or not such condition or event is within the control of Contractor, County or others and whether or not such condition or event is expressly stated to be a "condition precedent", shall be understood and interpreted to mean that the stated condition or event is a condition precedent to the existence, arising, performance and exercise of such right or obligation.

1.3 OWNERSHIP AND USE OF DRAWINGS, SPECIFICATIONS AND OTHER DOCUMENTS

1.3.1 Property of County. Subject to the provisions of Paragraph 2.4.4, below, all Design Documents, Contract Documents and Project Documents that are prepared by Contractor or a Subcontractor, of any Tier, for use in connection with the Project, including any designs, building designs or other depictions underlying or shown in them, and the Intellectual Property Rights thereto, shall be deemed the sole and exclusive property of County and ownership thereof is irrevocably vested in County, whether the Project is executed or not.

1.3.2 Assignment of Rights. Contractor shall, without further consideration, obtain any and all Intellectual Property Rights in the Project Documents and Design Documents prepared by Contractor or any Subcontractor, of any Tier, for use in connection with the Project, including any designs, building designs or other depictions underlying or shown in them, free and clear of any liens or other encumbrances, claims or rights of third parties, transfer such rights, if necessary in writing, to County and cooperate with County in securing and registering such rights, such that County shall own all Intellectual Property Rights and any other tangible and/or intangible property rights associated therewith. Such transfer and assignment will be effective for the entire duration of the copyrights and include, but are not be limited to, all rights in related plans, specifications, documentation, derivative works and moral rights.

1.3.3 Contractor's Warranty. Contractor represents and warrants that the Project Documents and Design Documents prepared by Contractor or any Subcontractor for use on the Project, and the use of such Project Documents in the ordinary course, are free of any claim of infringement or any other violation of any Intellectual Property Right or other right of any third party.

1.3.4 Non-Exclusive License. Without derogation of County's rights under this Section 1.3, Contractor and Subcontractors, of every Tier, are granted a limited, non-exclusive license, revocable at will of County, to use and reproduce applicable portions of the Design Documents, Contract Documents and Project Documents as appropriate to and for use in the execution of the Work and for no other purpose.

1.3.5 Reproduction. Contractor shall do all reproduction and distribution of such reproducible prints of Contract Documents and Design Documents as are necessary for the complete pricing and performance of the Work, including, without limitation, all Changes. The costs of such reproduction shall be at Contractor's Own Expense.

1.3.6 Delivery to County. All Design Documents and Contract Documents (including originals and copies), and one (1) copy of all other Project Documents, in the possession of Contractor or Subcontractors shall be delivered to County upon the earlier of Final Completion of the Work or termination of the Construction Contract; provided, however, that Contractor shall have the right to retain one (1) copy of the Contract Documents and Submittals as a permanent record.

1.3.7 Subcontractors. Contractor shall take all necessary steps to ensure that a provision is included in all contracts with Subcontractors, of every Tier, who perform Work on the Project protecting and preserving County's rights as set forth in this Section 1.3.

ARTICLE 2 COUNTY RIGHTS AND OBLIGATIONS

2.1 INFORMATION, APPROVALS AND SERVICES REQUIRED OF COUNTY

2.1.1 Legal Descriptions. County shall furnish, within a reasonable time after written request by Contractor, a legal description of the Site and information describing legal limitations affecting the Site that are recorded with applicable Governmental Authorities, such as, but not limited to, easements.

2.1.2 Permits and Fees. County shall secure and pay for only those permits and fees which are expressly stated to be the responsibility of County under the Contract Documents. County shall pay for all hook-up fees (not including "tap fees", which are the responsibility of Contractor pursuant to Paragraph 3.14.3, below) in order to establish a new account with a utility provider.

2.1.3 County Approvals. Information, approvals and decisions required of County or a County Consultant for which a County Review Period or County Review Date is included in the Construction Schedule that is approved by County shall be provided in accordance with the Construction Schedule. If a County Review Period or County Review Date is not set forth in the Construction Schedule approved by County, then such information, approvals and decisions shall be provided upon written request by Contractor without unreasonable Delay. Notwithstanding the foregoing, failure by County, Architect or a County Consultant to provide any information, approvals or decisions shall not be considered as a basis for Contract Adjustment to the Contract Time unless and until, and in calculating a Contract Adjustment any Delay or extension of the Contract Time resulting from a late-issuance of such information, approval or decision shall not commence until after:

.1 in the case of information, approval or decision for which there is a County-approved County Review Period or County Review Date in the County-approved Construction Schedule, seven (7) Days have passed since the County and the individual from whom such information, approval or decision is sought have received from Contractor a written notice containing all the following:

- (1) a detailed description of the information, approval or decision required;
- (2) a statement that the County Review Period or County Review Date has expired or passed; and
- (3) a statement, prominently displayed, that: "PURSUANT TO PARAGRAPH 2.1.3 OF THE GENERAL CONDITIONS, THE FAILURE TO PROVIDE THE REQUESTED INFORMATION, APPROVAL OR DECISION WITHIN 7 CALENDAR DAYS FROM THIS NOTICE MAY RESULT IN A REQUEST FOR A CONTRACT ADJUSTMENT"; or

.2 in the case of information, approval or decision for which there is no County Review Period or County Review Date set forth in the County-approved Construction Schedule, thirty (30) Days have passed since the County and the individual from whom such information, approval or decision is sought have received from Contractor a written notice that includes the statements set forth in Clauses (1) and (2) of Subparagraph 2.1.3.1, above, and that includes a statement, prominently displayed, that: "PURSUANT TO PARAGRAPH 2.1.3 OF THE GENERAL CONDITIONS, THE FAILURE TO PROVIDE THE REQUESTED INFORMATION, APPROVAL OR DECISION WITHIN 30 CALENDAR DAYS FROM THIS NOTICE MAY RESULT IN A REQUEST FOR A CONTRACT ADJUSTMENT".

2.1.4 **Approvals.** Contractor shall not be relieved of its obligations to perform the Work in accordance with the Contract Documents either by the activities or duties of County, Architect or any other Project Team member, or by tests, inspections or approvals required or performed by persons other than the Contractor.

2.1.5 **Non-Specified Items.** County reserves the right to approve materials and sources of supply of materials that are not specified in the Contract Documents and that are used for the performance of the Work.

2.2 COUNTY'S RIGHT TO STOP THE WORK

If Contractor fails to correct Defective Work as required by Section 13.2 of these General Conditions, fails to perform the Work in accordance with the Contract Documents or violates any Applicable Law, County may immediately order Contractor to stop the Work, or any portion thereof, until the cause for such direction has been eliminated by Contractor. Contractor shall immediately comply with such notice at Contractor's Own Expense. Nothing stated herein or elsewhere in the Contract Documents shall be interpreted as placing upon County a duty or responsibility to Contractor or any other party to exercise its right to stop the Work.

2.3 COUNTY'S RIGHT TO CARRY OUT THE WORK

If Contractor fails to carry out the Work in accordance with the Contract Documents, fails to provide sufficient labor, materials, equipment, tools and services to maintain the Construction Schedule, or otherwise fails to comply with any requirement of the Contract Documents, and fails to cure such failure in the manner required by Subparagraph 15.1.1.4, below, County may correct such failure. In such case, County shall be entitled to recover from Contractor or deduct from payments then or thereafter due Contractor for any Loss resulting from such failure, including compensation for the additional services and expenses of County, County Consultants and others whose services are reasonably required and made necessary thereby. If payments then or thereafter due Contractor are not sufficient to cover such amounts, Contractor shall promptly pay the amount of the shortfall to County.

2.4 ACCOUNTING, RECORDS AND AUDIT

2.4.1 **Accounting System.** Contractor shall exercise such controls as may be necessary for proper financial management of the Work. Such accounting and control systems shall comply with prevailing custom and practice for similar projects, be satisfactory to County and shall include preservation of the books and records

described in Paragraph 2.4.2, below, subject to Contractor's obligations under Paragraph 1.3.6, above, for a period of ten (10) years after Final Completion of the Work, or for such longer period as may be required by Applicable Laws.

2.4.2 Books and Records. Contractor shall keep, and shall require provisions to be included in all contracts entered into by Subcontractors, of every Tier, requiring the Subcontractors, of every Tier, to keep, full and detailed books, records, information, materials and data, of every kind and character (hard copy, as well as computer readable data if it exists) that have any bearing on or pertain to any matters, rights, duties or obligations relating to the Project, Work or Construction Contract, including, without limitation, agreements, purchase orders, leases, contracts, commitments, arrangements, notes, change orders, change order requests, estimates, field orders, construction change directives, schedules, requests for information, diaries, logs, reports, shop drawings, samples, exemplars, drawings, specifications, invoices, delivery tickets, receipts, vouchers, cancelled checks, memoranda, accounting records; job cost reports, job cost files (including complete documentation of negotiated settlements), backcharges, general ledgers; documentation of cash and trade discounts earned, insurance rebates and dividends, and other documents relating in any way to any claims, charges or time extensions asserted by Contractor or any of the Subcontractors, of any Tier, or relating to any credits, rebates or discounts owing to County.

2.4.3 Inspection and Copying. Contractor shall allow, and shall require provisions to be included in all contracts entered into by Subcontractors, of every Tier, allowing, County and the auditor for the State of California (and the authorized representative(s), auditors, attorneys and accountants of each) upon twenty-four (24) hours notice to Contractor, full access to inspect and copy all its aforesaid books and records at a location within the Southern California area. Such right of audit may be exercised by either County or the auditor for the State of California as often as reasonably necessary to verify Contractor's continuing compliance with the Contract Documents.

2.4.4 Confidential Information. Nothing stated in this Section 2.4 or elsewhere in the Contract Documents shall be interpreted as a waiver by Contractor or any Subcontractor of any rights of privilege or confidentiality that are provided for by Applicable Law nor as authorizing the inspection of books and records that contain information concerning estimating means or methods that is not, in whole or part, relevant to a charge or demand being asserted by Contractor or a Subcontractor involving Extra Work, Deleted Work, Delay or a Claim.

2.4.5 Withholding of Payment. In addition to and without limitation upon County's other rights and remedies for breach, including any rights of County to withhold payment that are set forth elsewhere in the Contract Documents, County shall have the right, exercised in its sole discretion, to withhold from any payment due to Contractor under an Application for Payment a sum of up to ten percent (10%) of the total amount set forth in such Application for Payment until Contractor and the Subcontractors have complied with any outstanding and unsatisfied obligation under this Section 2.4. Upon compliance with this Section 2.4, any such monies withheld shall be released to Contractor.

2.4.6 Specific Performance. Contractor agrees that any failure to provide access to books and records as required by this Section 2.4 will result in irreparable harm and prejudice to County and shall, without the necessity of posting of any bond or undertaking, be specifically enforceable by means of a mandatory injunctive order (temporary, preliminary, provisional or otherwise) issued by a court of competent jurisdiction, which order the County and Contractor hereby consent to being issued based upon affidavits and without the necessity of oral testimony.

2.5 COUNTY FURNISHED MATERIALS

2.5.1 Supply by County. County shall have the right to furnish materials, products or equipment directly for processing and incorporation by Contractor in lieu of Contractor providing materials, products or equipment specified in the Contract Documents to be provided by Contractor as part of the Work.

2.5.2 Deleted Work. If the materials, products or equipment provided by County pursuant to Paragraph 2.5.1, above, then a Change Order shall be executed deleting such materials, products or equipment from the Work along with a Contract Adjustment reducing the Contract Price in the manner provided for in Article 7, below, applicable to Contract Adjustments for Deleted Work.

2.5.3 Delivery Deadlines. Without limitation to Contractor's obligations under Article 8, below, upon receipt of written instruction by County of its intent to provide materials, products or equipment pursuant to this

Section 2.6, Contractor shall notify County promptly in writing of any deadlines within which such materials, products or equipment must be received at the Site in order to avoid Delay.

2.5.4 Delivery to Site. Contractor shall, upon their delivery to the Site, properly receive and unload materials, products or equipment furnished by County pursuant to this Section 2.5.

2.5.5 Care, Custody and Control. Contractor assumes full and unconditional responsibility for care, custody and control of the materials, products or equipment that are furnished by County pursuant to this Section 2.5, whether or not they have been accepted by County, and assumes sole responsibility for any subsequent loss, injury or damage thereto occurring prior to Final Completion.

2.5.6 Notice of Deficiencies. Contractor shall carefully inspect any materials, products or equipment furnished by County pursuant to this Section 2.5 and immediately notify County of any defect or deficiency in such materials, products or equipment or any nonconformity in such materials, products or equipment with the requirements of the Contract Documents or with the requirements of the other documentation provided to Contractor setting forth the conditions of County's purchase. Contractor shall not accept any materials, products or equipment furnished by County with respect to which Contractor has provided such notice of defect, deficiency or non-conformity unless and until instructed to do so in writing by County.

2.5.7 Incorporation in Work. Contractor shall, as part of the Work and without Contract Adjustment, provide any and all processing, fabrication, cutting, shaping, fitting, assembly and installation of materials, products or equipment furnished by County pursuant to this Section 2.5 in full compliance with the requirements of the Contract Documents and the manufacturer's instructions and recommendations.

2.6 COUNTY INSTALLED ITEMS

Contractor shall notify County, a reasonable time in advance, of the Contractor's scheduled dates for installation of items that are specified in the Contract Documents to be placed on, attached to or incorporated into the Work by County or Separate Contractors. In the event that Contractor fails to do so or if due to Unexcused Delay the County is unable after such notice by Contractor to so place, affix or incorporate such items, then Contractor shall be responsible, in addition to any amounts due to County for liquidated damages, to reimburse County for costs of storage or rental of temporary replacement items until such time as the Work is in a condition suitable for such items to be placed, affixed or incorporated.

2.7 COUNTY'S ADDITIONAL RIGHTS

The rights stated in this Article 2 are in addition to and not in limitation of any other rights of County granted elsewhere in the Contract Documents or under Applicable Laws.

ARTICLE 3 CONTRACTOR PERFORMANCE

3.1 CONTRACTOR STATUS

3.1.1 Independent Contractor. Contractor is, and shall at all times be deemed to be, an independent contractor and is wholly responsible for the performance of the obligations required of it by the terms of the Contract Documents.

3.1.2 Agents, Employees. Contractor wholly assumes responsibility for the acts and omissions of its agents and employees and the agents and employees of each Subcontractor, of every Tier, as they relate to the Work. Contractor, its agents and employees, shall not be entitled to any rights or privileges of County's employees and nothing contained in the Contract Documents and no course of conduct shall be construed as creating the relationship of employer and employee, or principal and agent, between County and any agent or employee of Contractor or any Subcontractor. County shall have the right, but not the obligation, to monitor the employment and other activities of Contractor and the Subcontractors to determine compliance with the terms of the Contract Documents.

3.1.3 Licenses. Contractor and the Subcontractors, of every Tier, shall maintain, such contracting, professional and business licenses as may be required by Applicable Laws for the duration of time that Contractor is performing the Work under the Contract Documents, including the period of any warranty provided covering all or any portion of the Work.

3.1.4 Subcontractors. Contractor is responsible to County for acts and omissions of the Subcontractors and their agents and employees and other persons performing portions of the Work under a contract with a Subcontractor, of any Tier.

3.1.5 Design Services. Contractor shall provide professional services if such services are expressly, or by reasonable implication, required by the Contract Documents for a portion of the Work or are required in order for Contractor to carry out the Contractor's responsibilities for construction means, methods, techniques, sequences and procedures. Professional design services or certifications so required of Contractor shall be furnished by design professionals exercising the highest standard of care and utilizing designs and engineering that comply with all systems, materials or equipment, performance and design criteria set forth in the Contract Documents. Certification by a properly licensed design professional, including such professional's signature and seal, shall appear on all drawings, calculations, specifications, certifications and other documents prepared by such professional. Submittals related to the Work designed or certified by such professional, if prepared by others, shall bear such professional's written approval when submitted. County, Architect and County Consultants shall be entitled to rely upon the adequacy, accuracy and completeness of the services, certifications or approvals performed by such design professionals.

3.2 REVIEW OF DOCUMENTS, SITE AND EXISTING IMPROVEMENTS

3.2.1 Contractor's Duty of Review. Contractor's submission of its Bid and execution of the Construction Contract constitutes its representation, acknowledgement and agreement that it had sufficient time, access and opportunity prior to the Bid Closing Deadline to conduct a careful and thorough examination, to its satisfaction, of:

.1 the Bidding Documents, Contract Documents, Reference Documents and other information provided by County to Contractor prior to the Bid Closing Deadline concerning the Project, Site or Existing Improvements;

.2 the visible conditions at the Site and its surroundings, visible conditions of Existing Improvements and their existing uses by County or the public, routes of ingress and egress, and local conditions in the vicinity of the Site (including, without limitation, sources and availability of labor, materials and equipment);

.3 the status of any construction at the Site concurrently under construction; and

.4 all information concerning visible and concealed conditions above and below the surface of the ground at the Site and in Existing Improvements (including, without limitation, surveys, reports, data, as-built drawings of Existing Improvements and utility sources, capacities and locations) that was either (1) provided by County to Contractor or other Bidders (including, but not limited to, the Bidding Documents and Reference Documents) or (2) reasonably available to Contractor for review in the public records of the County of Riverside or the City in which the Project is located.

3.2.2 Contract Adjustments.

.1 **Differing Site Conditions.** Except as otherwise provided in Subparagraph 3.2.3, below, the Contractor's right to a Contract Adjustment in the event Contractor encounters conditions at the Site or in Existing Improvements that vary from those indicated by the Contract Documents or other information that was either reviewed by Contractor or that Contractor was given the opportunity to review prior to the Bid Closing Deadline shall be governed exclusively by Paragraph 4.3.8, below, pertaining to Differing Site Conditions.

.2 **Design Discrepancies.** Except as otherwise provided in Subparagraph 3.2.3, below, and subject to the Contractor's compliance with the other provisions of the Contract Documents governing the Contractor's right to a Contract Adjustment (including, without limitation, Article 7 and Article 8, below), Contractor shall be entitled to a Contract Adjustment due to Design Discrepancies, subject to the following conditions and limitations:

(1) Compensable Change. There shall be no Contract Adjustment to the Contract Price for Extra Work that the Contractor is required to perform as a result of a Design Discrepancy unless all of the following conditions have been met prior to Contractor or any Subcontractor performing any portion of the Work involving or affected by such Design Discrepancy:

(a) the circumstances giving rise to such Extra Work conform to all of the requirements of Subparagraph 1.1.29.2 through Subparagraph 1.1.29.4, above, applicable to Compensable Changes;

(b) Contractor has submitted to County and Architect a Request for Information in compliance with Paragraph 3.2.5, below, seeking clarification of such Design Discrepancy;

(c) Contractor has submitted to County a timely and complete Notice of Change in accordance with Article 7, below, describing such Extra Work in detail;

(d) Contractor has received a Construction Change Directive signed by County in accordance with Article 7, below, directing that Contractor perform the portion of the Work in question; and

(e) unless otherwise provided in such Construction Change Directive, Contractor has submitted to County a Change Order Request in accordance with the requirements of Article 7, below, setting forth the particulars of its request for Contract Adjustment on account of such Extra Work.

(2) Compensable Delay. There shall be no Contract Adjustment to the Contract Price or Contract Time for Delay as a result of a Design Discrepancy unless all of the following conditions have been met prior to Contractor or any Subcontractor performing any portion of the Work involving or affected by such Design Discrepancy:

(a) if the Delay is the result, in whole or in part, of Extra Work, all of the requirements of Subparagraph 3.2.2.2 (1), (a) through (e), above, have been met;

(b) the circumstances giving rise to such Delay conform to all of the requirements of Subparagraph 1.1.30.2 and Subparagraph 1.1.30.3, above, applicable to Compensable Delay; and

(c) Contractor has submitted to County a timely and complete Notice of Delay and a timely and complete Request for Extension in accordance with Article 8, below, setting forth the particulars of its request for Contract Adjustment on account of such Compensable Delay.

(3) Differing Site Conditions. The Contractor's right to a Contract Adjustment as a result of variances between (a) the Contract Documents or other documents or information described in Paragraph 3.2.1, above, that, prior to the Bid Closing Deadline was either reviewed by Contractor or was available to Contractor for review prior to the Bid Closing Deadline and (b) conditions at the Site or in Existing Improvements shall, notwithstanding the fact that the circumstances asserted by Contractor as a basis for such Contract Adjustment may involve, relate to or arise out of a Design Discrepancy, be governed by the provisions of the Contract Documents setting forth the Contractor's right to Contract Adjustments on the grounds of Differing Site Conditions.

3.2.3 WAIVER BY CONTRACTOR.

CONTRACTOR AGREES THAT IT SHALL NOT BE ENTITLED TO, AND HEREBY CONCLUSIVELY WAIVES, ANY RIGHT TO CONTRACT ADJUSTMENT, AS WELL AS THE RIGHT TO ANY OTHER OR FURTHER RECOURSE OR RIGHT OF RECOVERY FROM COUNTY, ON ACCOUNT OF LOSSES OR DELAYS THAT ARE A RESULT OF EITHER A DIFFERING SITE CONDITION OR A DESIGN DISCREPANCY, IF PRIOR TO THE BID CLOSING DEADLINE SUCH DIFFERING SITE CONDITION OR DESIGN DISCREPANCY WAS:

(1) DISCOVERED BY CONTRACTOR AND CONTRACTOR, NOTWITHSTANDING SUCH DISCOVERY, FAILED TO REPORT SUCH DIFFERING SITE CONDITION OR DESIGN DISCREPANCY TO COUNTY IN WRITING PRIOR TO THE BID CLOSING DEADLINE;

(2) **ALTHOUGH NOT ACTUALLY DISCOVERED BY CONTRACTOR PRIOR TO THE BID CLOSING DEADLINE WAS REASONABLY DISCOVERABLE BY CONTRACTOR UNDER THE STANDARD OF PERFORMANCE SPECIFIED IN THE CONSTRUCTION CONTRACT, INCLUDING, WITHOUT LIMITATION, A DIFFERING SITE CONDITION OR DESIGN DISCREPANCY THAT WAS OVERLOOKED BY CONTRACTOR DUE TO A FAILURE BY CONTRACTOR TO FULLY FAMILIARIZE ITSELF PRIOR TO THE BID CLOSING DEADLINE WITH ANY OF THE DOCUMENTS, INFORMATION OR CONDITIONS REFERRED TO IN PARAGRAPH 3.2.1, ABOVE.**

3.2.4 Continuing Obligation. In addition and without limitation to Contractor's obligations under Paragraph 3.2.1, above, or elsewhere in the Contract Documents, Contractor shall have the continuing obligation until Final Completion to promptly report to County, by means of submission by Contractor of a Request for Information that complies with the requirements of Paragraph 3.2.5, below, any and all of the following:

.1 information contained in the Bidding Documents, Contract Documents, Reference Documents or other documentation that was either reviewed by Contractor or that Contractor was given the opportunity to review prior to the Bid Closing Deadline, as well as any visible conditions at the Site, in Existing Improvements or in the vicinity of the Project, that Contractor knows, or in the exercise by Contractor of its duties under the Standard of Performance should have known, may render a portion of the Work in any respect, wholly or partially, unsuitable or incomplete to meet the requirements of the Contract Documents, the Design Intent or Applicable Laws, and

.2 conditions in the Work that constitute Defective Work or that cause or are likely to cause any other portion of the Work to be Defective Work.

Without limitation to County's other rights under the Contract Documents, any portion of the Work, Existing Improvements or the work of Separate Contractors or County's own forces requiring replacement, repair or correction due to a failure by Contractor or any Subcontractor, of any Tier, to comply with its continuing obligation under this Paragraph 3.2.4 shall be promptly replaced, repaired or corrected to County's satisfaction, at Contractor's Own Expense.

3.2.5 Requests for Information.

.1 **Time for Submittal.** Requests for Information shall be submitted no later than three (3) Days after the date Contractor learns of the circumstances giving rise to the question contained in the Request for Information. Requests for Information shall be submitted by or through the Contractor and not directly by Subcontractors.

.2 **Content.** Each Request for Information shall, in addition to the Contractor's specific question or request, include the following:

(1) a detailed description of the circumstances giving rise to the Contractor's request or question, including, without limitation, any related Design Discrepancy;

(2) Contractor's request for clarification, including, without limitation, any request for further detailing or correction of the Contract Documents; and

(3) a statement of whether Contractor believes it is entitled to a Contract Adjustment by reason of the circumstances described.

.3 **Form.** Contractor shall submit Requests for Information using forms provided or approved by County.

.4 **Unnecessary, Multiple Requests.** Contractor shall carefully review, coordinate and consolidate (where appropriate to prevent piecemeal submission) Requests for Information (whether originating with Contractor or the Subcontractors) prior to submitting them in order to eliminate unnecessary or duplicative requests.

.5 Responses. Responses to Requests for Information shall be furnished with reasonable promptness so as to not unreasonably Delay progress of the Work; provided, however, that the timing of a response by the Architect, County or a County Consultant to a Request for Information shall not constitute grounds for a Contract Adjustment unless Contractor has complied with the requirements set forth in this Paragraph 3.2.5 and, if applicable, Paragraph 2.1.3, above.

.6 Back Charges by County. County shall have the right to deduct from payments due to Contractor sums expended by County for the services of the Architect, Inspectors of Record or County Consultants due to a failure by Contractor to comply with this Paragraph 3.2.5.

.7 WAIVER BY CONTRACTOR.

FAILURE BY CONTRACTOR TO SUBMIT A REQUEST FOR INFORMATION IN ACCORDANCE WITH AND UNDER CIRCUMSTANCES IN WHICH A REQUEST FOR INFORMATION WAS REQUIRED BY THIS PARAGRAPH 3.2.5 SHALL RESULT IN CONTRACTOR WAIVING ITS RIGHT TO A CONTRACT ADJUSTMENT ON ACCOUNT OF ANY LOSS OR DELAY THAT COULD HAVE BEEN AVOIDED IF SUCH REQUEST FOR INFORMATION HAD BEEN PROPERLY PREPARED AND TIMELY SUBMITTED.

3.2.6 Correction of Work. Contractor shall, at Contractor's Own Expense, correct or replace in accordance with the direction of County any portion of the Work that is performed by Contractor or a Subcontractor knowing that it involves, or that Contractor or Subcontractor in the exercise of reasonable care and diligence should have known involves, a portion of the Contract Documents that contains an error, omission, conflict, ambiguity, lack of coordination or noncompliance with Applicable Laws, without first notifying and obtaining the written approval of County and Architect.

3.3 SUPERVISION AND CONSTRUCTION PROCEDURES

3.3.1 General Obligation. Contractor shall provide competent, fully qualified personnel to supervise, administer, manage and direct the Work, competently and efficiently, at all times devoting their best skill and attention to perform the Work in accordance with the Contract Documents.

3.3.2 Supervisory Staff. Contractor shall employ a competent project manager, superintendent, scheduler, forepersons and necessary assistants during performance of the Work. Contractor's superintendent and forepersons shall be present at the Site at all times that the Work is in progress and at any time that any employee of Contractor or a Subcontractor is present at the Site. Contractor's project manager and superintendent shall, unless excused from attendance by the County, attend all job meetings. Contractor's project manager and superintendent must be able to fluently read and write in English. Contractor's superintendent shall not perform the Work of any trade, pick up materials, or perform any Work not directly related to the supervision of the Work and shall be available twenty-four (24) hours a Day, seven (7) Days a week, to respond to emergencies.

3.3.3 County Supplementary Personnel. Without limitation upon any of the rights or remedies of the County under the Contract Documents or under Applicable Laws, in the event that Contractor fails to have personnel on Site to supervise the Work, the County shall have the right, but not the obligation, upon twenty-four (24) hours' telephonic or email notice by the County to Contractor, to provide such supervision on a temporary basis and to deduct from the sums owing to Contractor the actual costs of such temporary supervision. Contractor shall, notwithstanding the County's providing such temporary supervision, remain solely responsible for all actions and omissions of its personnel and of the Subcontractors.

3.3.4 Means, Methods, Procedures. Contractor shall be solely responsible for and have control over construction means, methods, techniques, sequences and procedures and coordinating all portions of the Work, unless the Contract Documents specify other specific instructions concerning these matters. If the Contract Documents give specific instructions concerning construction means, methods, techniques, sequences or procedures, Contractor shall nonetheless be fully and solely responsible for the adequacy and safe implementation of such means, methods, techniques, sequences or procedures. If Contractor believes that such specified means, methods, techniques, sequences or procedures may not be safe or adequate, Contractor shall give written notice to County and Architect and shall not proceed with that portion of the Work without further written instruction from County or Architect. In response to such notice, County may order Contractor to improve the character or increase the efficiency

of the means, methods, techniques, sequences or procedures employed, and Contractor shall conform to such order; but the failure of County to order such improvement or increase of efficiency will neither relieve Contractor from its sole responsibility for safety at the Site nor relieve Contractor from its obligation to perform the Work in accordance with the Contract Documents and Applicable Laws.

3.4 LABOR, MATERIALS AND EQUIPMENT

3.4.1 Costs of Work. Contractor shall provide and pay for labor, materials, tools, equipment, machinery, water, heat, utilities, transportation, facilities and services necessary for proper execution and completion of the Work, whether temporary or permanent and whether incorporated or to be incorporated into the Work.

3.4.2 Coordination. Contractor shall provide supervision sufficient to ensure proper coordination for the timely and efficient performance and completion of the Work.

3.4.3 Field Conditions. Before commencing the Work or any activities on the Site, Contractor shall take field measurements and verify field conditions and carefully compare such field measurements and conditions with the information in the Contract Documents and other information obtained by or available to Contractor.

3.4.4 Layout. Contractor is solely responsible for (1) the accurate layout of all portions of the Work, (2) the accuracy of the Project lines and levels, (3) erection of the Work square, plumb, level, true to line and grade, in the exact plane, and to the correct elevation and (4) sloping of surfaces to drain as indicated by the Contract Documents, or, if not indicated, as needed to provide for adequate drainage.

3.4.5 Materials, Equipment

.1 Delivery, Storage, Inventory. Materials and equipment shall be: (1) furnished in ample quantities and at such times as to ensure uninterrupted progress of the Work; and (2) if located on the Site, properly stored and protected as reasonable and necessary, or as directed by County, to prevent Loss from any foreseeable cause, including, without limitation, theft. In the event that County gives direction as to the location for storage or protection of materials or equipment on the Site, Contractor shall nonetheless remain solely responsible for its safe and secure storage and protection. No part of any such stored materials and equipment shall be removed from its place of storage except for immediate installation in the Work. Contractor shall keep an accurate inventory of all such stored materials and/or equipment in a manner satisfactory to County.

.2 Purchases. Contractor shall place orders for materials and/or equipment as specified so that delivery of same may be made without Delay to the Work. Contractor shall, upon request from County, furnish to County documentary evidence showing that orders have been placed. County reserves the right in the event Contractor fails, within three (3) Days after receipt of written notice by County to Contractor to comply with the requirements of this Subparagraph 3.4.5.2, to comply with the requirements of this Subparagraph 3.4.5.2, to deduct the costs paid or payable by County associated with such purchases from payments otherwise owing to Contractor. Contractor shall, if requested by County, accept assignment of any such contracts entered into by County without a Contract Adjustment.

.3 Title. No material, supplies or equipment for the Work shall be purchased subject to any chattel mortgage or under a conditional sale or other agreement by which an interest therein or in any part thereof is retained by seller or supplier. Contractor warrants good title to all material, supplies and equipment installed or incorporated in the Work and agrees upon Final Completion to deliver the Work, including the premises, land, improvements and appurtenances on or to which the Work is placed, located or affixed, to County free from any claims, liens, or charges. Contractor further agrees that neither it nor any person, firm, or corporation furnishing any materials or labor for any of the Work shall have any right of lien upon the Site, or any Existing Improvement or appurtenance thereon, except that (1) nothing stated in this Subparagraph 3.4.5.3 shall be interpreted as a waiver by Contractor or any Subcontractor of its right under Applicable Laws to serve a stop payment notice for Work that is not paid for by County as required under the terms of the Contract Documents; and (2) Contractor may install metering devices or other equipment of utility companies or political subdivisions, title to which may be retained by such utility company or political subdivision, provided that in the event of installation of any such metering device or utility equipment, Contractor shall advise County as to the owner, and the precise location, thereof.

.4 Substitutions. No substitution of materials, equipment, articles, processes or other items of the Work required under the Contract Documents will be made without written approval of County, which approval may be granted or denied in the sole and absolute discretion of County. With respect to any such substitution made or requested by Contractor, neither the occurrence of a substitution made or requested by Contractor nor the approval or disapproval by County of a substitution that is made in accordance with this Subparagraph 3.4.5.4 shall give rise to any right of Contractor to a Contract Adjustment. Contractor shall, notwithstanding County's or Architect's approval, remain solely responsible for the sufficiency and suitability of all substitutions requested by Contractor and approved, or otherwise made, by Contractor.

.5 Parts List. Contractor will provide a printed parts list for all items which might be subject to replacement and for which parts lists are either expressly required by the Contract Documents or customarily provided according to usual commercial practices.

.6 Manuals. As part of its obligation for submission of Record Documents, four (4) hard copies and one (1) electronic version of operations and maintenance manuals shall be prepared and transmitted by Contractor to County prior to and as a condition of Final Completion. Final Payment will not be due until County has received all such manuals and all other manuals covering the Work that are either required to be provided by the terms of the Contract Documents or if not required are customarily provided according to usual commercial practices applicable to the portion of Work involved. Operating instructions will be included within the equipment manuals and will state all information necessary for County to operate, use, maintain and service the equipment fully and efficiently.

.7 Start Up. Contractor will be responsible for start-up of all systems and equipment purchased as part of the Work and has included sufficient amounts in its Bid to cover contingencies arising out of the start-up of such systems and equipment. Contractor will comply fully with each manufacturer's specifications and instructions. Systems and equipment specified to be furnished with manufacturer's supervision of start-up will be placed in operation only under such supervision.

3.5 CONTRACTOR'S WARRANTY

3.5.1 General Warranty. In addition to other warranties and guarantees required by the Contract Documents, Contractor shall, and hereby does, warrant and guarantee that: (1) the Work will conform to the requirements of Contract Documents, including, without limitation, any performance standards that are part thereof; (2) all Work for which there is not a specific requirement, criteria, specification or standard set forth in the Contract Documents will conform to the Standard of Performance; (3) all labor, equipment, materials and other items of Work will be when installed new and free of liens, claims and security interests; (4) without limitation to the other requirements of this warranty, all labor, installation and workmanship will be performed in a good and workmanlike manner; and (5) all labor, materials, equipment, services and work shall be free of defects for a period of one (1) year after Final Completion. If required by County, Contractor shall furnish satisfactory evidence as to the kind and quality of services, labor, installation, materials and equipment used. Manufactured items installed in the Work, unless otherwise specifically stated in the Contract Documents, are to be installed in strict accordance with manufacturer's current printed instructions.

3.5.2 Repair, Replacement. Without limitation upon the County's other rights or remedies under the Contract Documents or Applicable Laws, any and all Work that, for reasons other than (1) ordinary wear and tear or (2) abuse or neglect by persons or entities other than the Contractor or the Subcontractors, is not in conformance with the warranties or guarantees required by the Contract Documents or Applicable Laws shall be repaired or replaced, together with the repair or replacement of any other Work, Existing Improvements or the work of the Separate Contractors, the County's own forces or others, which may be removed, displaced or damaged in so doing. The Contractor shall notify the County in writing upon completion of such repair or replacement. In the event of failure by the Contractor to commence and pursue with diligence said replacement or repair within ten (10) Days after being notified by the County, the County is hereby authorized to proceed with such replacement and repair as the County deems necessary and expedient and to charge such costs to Contractor at Contractor's Own Expense.

3.5.3 Not a Limitation. The warranties stated in this Section 3.5 are in addition to any other warranties or guarantees that are required under any other provision of the Contract Documents or Applicable Laws. Nothing stated in this Section 3.5 shall be interpreted as a limitation upon the County's rights under any warranties or

guarantees provided for under any other provision of the Contract Documents or under Applicable Laws that afford the County greater rights than the rights afforded to County under this Section 3.5.

3.5.4 Assignment. Contractor does hereby unconditionally and irrevocably assign to County all warranties and guarantees issued or made by any Subcontractor, of any Tier (including, without limitation, any manufacturer, supplier and distributor) in connection with the Work. Such assignment shall not relieve Contractor of, or otherwise limit, any of its obligations contained in the Contract Documents, including, without limitation, the general responsibility and liability of Contractor for a breach by a Subcontractor (including, without limitation, any manufacturer, supplier and distributor, of any Tier) of a warranty or guarantee given by such Subcontractor in connection with the Work.

3.5.5 Close-Out. Unless sooner requested by County, Contractor shall furnish to County, as part of the Close-Out Documents and as a condition to Final Payment, all written guarantees or warranties that are required by the terms of the Contract Documents. All such guarantees and warranties shall be: (1) in writing; (2) indexed and bound; (3) accompanied by such certifications and instruction materials as may be required by the Contract Documents; and (4) issued to County or assignable by their terms, and in fact assigned, to County.

3.6 TAXES

3.6.1 Payment by Contractor. Contractor shall pay, at Contractor's Own Expense, all local, state and federal taxes, including, without limitation, all sales, consumer, business license, use and similar taxes on materials, labor or other items furnished for the Work or portions thereof provided by Contractor or the Subcontractors, of all Tier, all taxes arising out of its operations under the Contract Documents and all benefits, insurance, taxes and contributions for social security and unemployment insurance which are measured by wages, salaries or other remuneration paid to Contractor's employees. If under federal excise tax law any transaction hereunder constitutes a sale on which a federal excise tax is imposed, and the sale is exempt from such excise tax because it is a sale to a state or local government, then County, upon request, will execute documents necessary to show: (1) that County is a political subdivision of the State for the purposes of such exemption; and (2) that the sale is for the exclusive use of County. No excise tax for such materials shall be included in any price (including, without limitation, the Bid) submitted by Contractor for the Work or for Changes in the Work.

3.6.2 Tax Exempt Projects. If applicable to the Project, Contractor shall comply with Applicable Laws concerning tax-exempt construction projects.

3.6.3 Records of Taxes. Contractor and the Subcontractors shall keep sufficient records to verify the amount of sales and use taxes paid. Copies shall be submitted with each monthly Application for Payment. Failure to keep or submit such records, resulting in the inability of County to claim a refund for taxes for such materials, shall render Contractor liable to County for the amount of such tax refund.

3.7 PERMITS, FEES AND LEGAL NOTICES

3.7.1 Permits. Contractor shall obtain and pay for all permits and approvals that are not stated in the Contract Documents to be the responsibility of the County. Such permits and approvals that are the responsibility of the Contractor may include local building or land use permits, California Department of Fish and Game Streambed Alteration Agreements (Section 1600 et seq.), California Department of Fish and Game collection permits, U.S. Army Corps of Engineers 404 fill and dredge authorization, Clean Water Act Section 401 authorization (managed by the local California Regional Water Quality Control Boards) land owner agreements, or other regulatory permits or approvals required for the implementation of the Project. All permits, licenses and certificates obtained by Contractor shall be delivered to County prior and as a condition to Final Completion and Contractor's right to Final Payment.

3.7.2 Applicable Laws, Notices. Contractor shall comply with, and give notices required by, Applicable Laws bearing on performance of the Work.

3.7.3 Bonds, Undertakings. Contractor shall, without Contract Adjustment, procure and obtain all bonds required of the County or the Contractor by the municipality in which the Project is located or by any other public or private body with jurisdiction over the Project. In connection with such bonds, the Contractor shall prepare all applications, supply all necessary back-up material and furnish the surety with any required personal undertakings. The Contractor shall also obtain and pay, without Contract Adjustment, all charges for all approvals for street closings,

parking meter removal and other similar matters as may be necessary or appropriate from time to time for the performance of the Work.

3.7.4 Notice of Violations. Contractor shall immediately notify County in writing of any instruction received from County, or any other Project Team member that, if implemented, would cause a violation of any Applicable Law.

3.7.5 Governmental Authority Approvals. Where the Contract Documents state, or Applicable Laws require, that materials, processes or procedures must be approved by a Governmental Authority, Contractor shall be responsible for satisfying the requirements and obtaining the approval of such Governmental Authority.

3.8 CONTRACTOR'S PERSONNEL

3.8.1 Key Persons. Contractor's employees acting as project manager, scheduler and superintendent constitute Key Persons. Individuals acting as Key Persons who are not already identified in Contractor's Post-Award Submittals shall be identified in writing to County prior to commencement of the Work.

3.8.2 Background Check. Contractor shall perform, prior to commencing Work on the Site, a thorough background check of each of the Key Persons and shall not, without prior written approval of County, employ any person to act as a Key Person if such background check, or other information known to Contractor, discloses a felony conviction or other matter which casts any reasonable doubt on the competency, reliability or honesty of such person.

3.8.3 Project Manager. The Key Person acting as project manager shall be deemed to have full authority to contractually bind Contractor, including, without limitation, the authority to bind Contractor to the terms of Contract Adjustments.

3.8.4 Transfer. Contractor's Key Personnel are deemed of essence to the Construction Contract. No Key Person shall, for so long as he/she is employed by Contractor, be transferred to any other project nor any of his/her responsibilities reassigned at any time during performance of the Work without the prior written approval of County, which approval may be granted or withheld in County's sole and absolute discretion.

3.8.5 Removal. County shall have the right, at any time, to direct the removal and replacement of any Key Person if his/her performance is determined by County, in its sole and absolute discretion, to be unsatisfactory.

3.8.6 Replacement. Any individual proposed by Contractor as a replacement for a Key Person must be approved in advance by County, such approval not to be unreasonably withheld, after submission by Contractor to County of complete information concerning such individual's experience and qualifications.

3.8.7 Communications. Important communications by Key Persons shall be confirmed in writing by Contractor. Other communications by Key Persons shall be confirmed on written request in each case.

3.8.8 Contact Information. Contractor shall provide to County, prior to the start of the Work, telephone numbers where Key Persons can be reached 24-hours a day, 7 Days a week.

3.8.9 Signatures. Prior to commencing the Work, Contractor shall submit to County a facsimile of the signatures of the Key Person acting as project manager, as well as any other representatives of Contractor with authority to sign on behalf of and contractually bind Contractor.

3.8.10 Exclusion from Site. Contractor shall at all times maintain good discipline and order at the Site among its employees and the employees of the Subcontractors. Any person in the employ of Contractor or any of the Subcontractors, of any Tier, whom County deems, in its sole and absolute discretion, incompetent, unfit, intemperate, troublesome or otherwise undesirable shall be excluded from the Site and shall not again be employed on the Site except with written approval of County.

3.9 CONTRACTOR'S CONSTRUCTION SCHEDULE

3.9.1 **Preparation.** Within twenty-one (21) Days after issuance by County of the Notice of Intent to Award, the Contractor shall prepare and submit a Construction Schedule for the Work, both in hard copy and electronically, for the County's approval. The Construction Schedule shall in all respects conform to and be consistent with the time requirements for the Project set forth in the Construction Contract.

3.9.2 **Format.** The Construction Schedule shall be in the form of a critical path progress schedule that shows, in graphic form, a plan for performance of the Work within the Contract Time. It shall be prepared, using Primavera P3, as a time-scaled bar chart showing: (1) continuous flow from left to right and activities and milestones that are critical to Substantial Completion and Final Completion of the Work; (2) identification of "float"; and (3) a clearly highlighted critical path. Durations and specific calendar days shall be clearly and legibly shown for the early and late start and finish of each activity. With the exception of County Review Periods and Governmental Authority Review Periods, any activity with more than fifteen (15) Days in duration will be segmented into fifteen (15) Day increments. No more than ten percent (10%) of the activities shall be shown as critical. Techniques or methods designed to suppress depiction of available float are strictly prohibited.

3.9.3 **Detail.** Activities shown in the Construction Schedule shall be in sufficient detail to demonstrate a practical plan to complete the design, engineering, fabrication and construction within the Contract Time and shall, at a minimum, include the following:

- .1 the start and finish date of each activity;
- .2 the anticipated percent of completion at the end of each month;
- .3 the weighted labor value expressed as a percentage of the total labor cost of the Work for each activity;
- .4 the final manpower curves by trade;
- .5 the anticipated purchase and delivery of major materials and equipment;
- .6 the County's occupancy requirements;
- .7 receipt and incorporation of materials, products or equipment to be furnished by County (if any);
- .8 County Review Periods and County Review Dates that are acceptable to and approved by County;
- .9 Governmental Authority Review Periods; and
- .10 the activities identified as being on the critical path to Substantial Completion and Final Completion of the Work.

3.9.4 **Updates.** Throughout the performance of the Work, weekly updates shall be delivered, in hard copy and, if required by County, in an electronic form satisfactory to County. In addition, Contractor shall regularly prepare and submit to County short term, three (3) week "look-ahead" schedules generated from the Construction Schedule approved by County. Except to the extent permitted by Contract Adjustment to the Contract Time approved by County in a duly executed Change Order or Unilateral Change Order, in no event shall the Contractor's updates or "look ahead" schedules alter the dates for Substantial Completion or Final Completion set forth in the Construction Schedule approved by County.

3.9.5 **Governing Schedule.** The governing schedule for the Work shall be the updated Construction Schedule approved by the County. Unless otherwise directed in a writing signed by County, no other schedule shall

be used or relied upon by the Contractor or its Subcontractors in planning or performing the Work or in connection with any request for a Contract Adjustment to the Contract Time.

3.9.6 Submittal Schedule. Within twenty-one (21) Days after the receipt by the Contractor of the Notice of Intent to Award, the Contractor shall prepare and submit, in accordance with the Contract Documents, a Submittal Schedule for the County's approval. The Submittal Schedule shall be coordinated with the Construction Schedule and allow time for review of the Submittals as may be required by the Contract Documents, or if none is required, a reasonable time for such review. Contractor shall keep the Submittal Schedule current and updated in the same manner as required for updating of the Construction Schedule.

3.9.7 Schedule Responsibility. Contractor is and shall remain solely responsible, notwithstanding the County's review or approval thereof, for the accuracy, suitability and feasibility of all schedules it prepares for the Project, including, without limitation, the Construction Schedule, Submittal Schedule, "look ahead" schedules, recovery schedules and any updates thereof.

3.9.8 Condition of Payment. Compliance by Contractor with the requirements of this Section 3.9 and the other provisions of the Contract Documents pertaining to preparing, submitting, revising and updating the Construction Schedule and Submittal Schedule is a condition to County's obligation to make payment to Contractor. Recognizing that scheduling is a continuing, cumulative and recurring obligation, failure by County or to assert a right to withhold payment under this Paragraph 3.9.8 due to a noncompliance by Contractor with its schedule obligations shall not waive or diminish the County's right to withhold or disapprove of future payments on account of such prior, or any other past or future, noncompliance of the same or similar nature.

3.9.9 Scheduling by County. Without limitation to County's other rights under the Contract Documents, if Contractor fails after written notice by County to perform any part of its obligations relating to scheduling, County shall have the right, but not the obligation, to retain one or more schedule consultants to perform, in whole or in part, the Contractor's obligations or supplement the scheduling services provided by Contractor and to reimburse County for the costs of such consultant services by withholding such costs from payments to Contractor.

3.10 DOCUMENTS AT SITE, REPORTING, MEETINGS

3.10.1 Documents at Site

.1 Contract Documents, Submittals. Contractor shall at all times while performing Work at the Site maintain, in good order, at the Site: (1) one legible set of the permitted Contract Documents; (2) one legible copy of the current version of the other Contract Documents; (3) one legible and current version of approved Shop Drawings, Product Data, Samples and other Submittals; (4) one approved Storm Water Pollution Prevention Plan (SWPPP); and (5) one copy of all reports prepared pursuant to the Mitigation, Monitoring, and Reporting Program (MMRP) requirements of the California Environmental Quality Act.

.2 Record Documents. Contractor shall maintain Record Drawings and Specifications in a satisfactory record condition by posting, on a weekly basis (or, in the case of building or site mechanical, electrical, plumbing or fire sprinkler systems, as soon thereafter as is reasonable and practical), thoroughly and neatly, on the Drawings and Specifications all Changes to the Work and the location of the Work, including, without limitation, the location of portions of the Work shown diagrammatically, as occurs in the actual construction of the Work. The Record Drawings and Specifications and other Record Documents shall be prepared or converted, if requested by County, to electronic form (such as, AutoCAD, Adobe Acrobat or other software satisfactory to County). All Record Drawings and Specifications and other Record Documents shall be deemed the sole property of County and, at the earlier of Final Completion or termination of the Construction Contract, shall be turned over to County. At the time they are so turned over to County, they shall be manually signed by Contractor's superintendent certifying that, to the best of his/her knowledge, they are true and accurate and that the indications thereon represent the actual condition of the Work.

.3 Availability for Review. Copies or originals of all documents required to be maintained by Contractor at the Site or required to be submitted to County or the Architect shall be available at all times at the Site while Work is being performed for review by County, Inspector of Record, Architect and Governmental Authorities.

.4 Condition of Payment. Compliance by Contractor with the requirements of this Paragraph 3.10.1 shall be deemed a condition to Contractor's right to payment upon its Applications for Payment.

3.10.2 Daily Reports.

.1 Delivery. At the end of each Day that Contractor performs the Work on the Site, Contractor shall submit a daily report to County (on the form provided or approved by County) together with applicable delivery tickets for all labor, materials and equipment furnished that Day. If requested by County, daily reports shall be delivered electronically.

.2 Content. Daily Reports shall include the following information:

- (1) Labor - The names of the workers, and for each such worker his/her classification and hours worked.
- (2) Material - A list of the different materials used and for each different material the quantity used.
- (3) Equipment - The type of equipment, size, identification number, and hours of operation, including loading and transportation, if applicable.
- (4) Inspection and Testing Activities – A list of inspections performed by name of inspector and testing company and the type of inspection, items of the Work involved and a description of the outcome of such inspection or test.
- (5) Visitors, Guests, Dignitaries – A list of visitors and guests by name, title, company and purpose of visit.
- (6) Areas of the Work – A statement of the areas of the Site on which the Work was performed and a detailed description of the stage, status and progress of the Work in each such area at the beginning and end of the Day.
- (7) Accidents, Delays, Defective Work – A description in detail of any injuries to the workers, accidents or delays that occurred or Defective Work that was encountered.
- (8) Other Services and Expenditures – A description of other services and expenditures in such detail as County may require.

.3 Payment. Timely and complete submission of daily reports by Contractor shall be a condition to Contractor's right to payment under the Construction Contract.

3.10.3 Progress Meetings. Contractor shall attend all progress meetings at the Site, at which meetings progress of the Work shall be reported in detail with reference to the then-current updated Construction Schedule approved by the County. Progress meetings shall be held weekly, or at such other time or frequency as County, in its sole and absolute discretion, deems necessary. A representative of each Subcontractor then actively performing Work, or immediately scheduled to become active, shall have a competent and knowledgeable representative present at such progress meeting to report on the condition of the Work of such Subcontractor and to receive relevant information. Meeting notes shall be taken by the County or Architect and distributed to all meeting attendees and all other affected parties.

3.10.4 Notice Requirements. Under no circumstances shall information contained in Contractor's daily job reports, monthly reports or job meeting minutes relieve Contractor of its obligations to comply with, serve as a substitute for, nor constitute a waiver by County of its right to insist upon, Contractor's compliance with the provisions of the Contract Documents relative to timely and complete notice to County of Changes, Delays, Claims or other matters for which written notice is required by the Contract Documents.

3.10.5 Availability for Review. Copies or originals of all Record Documents, daily reports, job meeting minutes and other documents required to be maintained or actually maintained by Contractor at the Site or required to be submitted to County or Architect shall be available at the Site for review by County, Architect, Inspectors of Record, County Consultants and Governmental Authorities.

3.11 SUBMITTALS

3.11.1 Not Contract Documents. Shop Drawings, Product Data, Samples and other Submittals are not Contract Documents. Their purpose is to demonstrate for those portions of the Work for which Submittals are required the way Contractor proposes to conform the Work to the designs and other information in the Contract Documents.

3.11.2 Coordination with Others. Contractor shall cooperate in the coordination of Contractor's Shop Drawings, Product Data, Samples and other Submittals with related documents submitted by the Separate Contractors.

3.11.3 Submission by Contractor.

.1 Submission. All Shop Drawings, Product Data, Samples and other Submittals required by the Contract Documents shall be submitted to Architect for its review and approval, with a copy to County and to such of County's Consultants or Separate Contractors as County may direct in writing. Informational submittals (i.e., Submittals upon which no responsive action is expected) shall be limited to those Submittals so identified in the Contract Documents. Submittals made by Contractor which are not required by the Contract Documents may be returned without action.

.2 Contractor Approval. The Contractor shall review, stamp "approved" and submit Contractor's Shop Drawings, Product Data, Samples and other Submittals to the Architect, in accordance with the latest Submittal Schedule approved by the County. The Contractor's approval and submission of Submittals constitutes a representation that the Contractor has determined or verified materials and field measurements and conditions related thereto, and that it has checked and coordinated the information contained within such Submittals with the requirements of the Contract Documents and with the Submittals for related Work. Submittals without evidence thereon of the Contractor's approval shall be returned, without further consideration, for resubmission in accordance with these requirements.

.3 Transmittal. All Submittals shall be accompanied by an accurately completed transmittal in the form required by County. With respect to Submittals of documents, the transmittal shall give a list of the numbers of the sheets submitted. All sheets shall be marked with the name of the Project and the name of Contractor shall be numbered consecutively and referenced to the sheets or paragraphs of the Drawings and Specifications affected. A separate transmittal form shall be used for each specific item or class of material or equipment for which a Submittal is required. Transmission of Submittals of various items using a single transmittal form will be permitted only when the items taken together constitute a manufacturer's "package" or are so functionally related that expediency dictates review of the group or package as a whole. Any Submittal not accompanied by such transmittal form, or where all applicable items on the form are not completed, may be returned for re-submittal without review.

.4 Timing. Submittals shall be provided within the time frame specified in the Contract Documents, in accordance with the Construction Schedule and Submittal Schedule and at a time sufficiently early to allow review of the same by the Architect without causing Delay to construction progress. Contractor will be responsible to pay, at Contractor's Own Expense, additional services fees and costs incurred by County to the Architect, Inspectors of Record and County Consultants in order to expedite review of Submittals which are not submitted in a timely fashion.

.5 Content. Submittals shall consist of the appropriate combination of catalog sheets, material lists, manufacturer's brochures, technical bulletins, specifications, diagrams and product samples, necessary to describe a system, product or item. Submittals shall show in detail the size, sections and dimensions of all members, the arrangement and construction of all connections, joints and other pertinent details, and all holes, straps and other fittings for attaching the Work. When required by the Architect or the Contract Documents, engineering computations shall be submitted.

.6 Professional Certifications. When professional certification of performance criteria of materials, systems or equipment is required by the Contract Documents, Architect shall be entitled to rely upon the accuracy and completeness of such calculations and certifications.

.7 Multiple Submittals. Except where the preparation of a Submittal is dependent upon the approval of a prior Submittal, all Submittals pertaining to the same class or portion of the Work shall be submitted simultaneously.

.8 Notation of Revisions. Contractor shall direct specific attention, in writing or on resubmitted Shop Drawings, Product Data, Samples or other Submittals, to revisions other than those requested and approved by Architect on previous Submittals.

.9 Duplicates. Contractor shall be responsible for delivering duplicates of Submittals to all other persons whose work or services are dependent thereon.

3.11.4 Review of Submittals. Review of Submittals by Architect, County or County Consultants is subject to the limitations of Paragraph 4.2.6, below. Contractor shall, notwithstanding any review or approval thereof by County, Architect or a County Consultant, be solely responsible for the content of all Submittals. Without limitation to the foregoing, deviations in Submittals from requirements of the Contract Documents shall remain the sole responsibility of Contractor unless Contractor has specifically informed Architect in writing of such deviation at the time of submission of the Submittal and Architect has given specific written approval thereof.

3.11.5 Contract Adjustments. Subject to Contractor's rights and obligations under Article 7, below, revisions indicated on Shop Drawings, Product Data, Samples or other Submittals shall not be considered as a basis for Contract Adjustments.

3.11.6 Compliance with Contract. Contractor shall perform no portion of the Work requiring submittal and review of Shop Drawings, Product Data, Samples or other Submittals until the respective Submittal has been returned by the Architect with an indication that it has been reviewed and that the Work addressed by the Submittal may proceed. Such Work shall be in accordance with such Submittals, unless such Submittal indicates that there are corrections to be made. If corrections are indicated to be made then the Work shall be in accordance with the re-submitted and corrected Submittal that is reviewed and returned to the Contractor by the Architect.

3.12 USE OF SITE

3.12.1 Staging Area. Contractor will be assigned staging space on or adjacent to the Site, and all field offices, materials and equipment shall be kept within this area. Unless otherwise required by the Contract Documents, Contractor shall be responsible for restoring such areas and surrounding areas to the condition they were in prior to Contractor's commencement of the Work.

3.12.2 Existing Improvements. During the installation of the Work, Contractor shall ensure that Existing Improvements are adequately protected. Upon Final Completion of the Work, all Existing Improvements not required by the Contract Documents to be demolished as part of the Work that have been damaged by the actions or inactions of Contractor or its Subcontractors shall be restored to the condition they were in prior to Contractor's commencement of the Work.

3.12.3 Operations at Site. Contractor shall confine its activity, access and parking at the Site to areas permitted by Applicable Laws and County and shall not unreasonably encumber the Site with materials or equipment. Contractor acknowledges that it is experienced in performing construction within limited and confined areas and spaces such as those that are anticipated to exist on this Project and agrees to assume responsibility, without a Contract Adjustment, to take all special measures (including, without limitation, those related to protection, storage, staging and deliveries) as may be necessary to adapt its performance to the constraints of the Site.

3.12.4 Coordination. Contractor shall coordinate Contractor's operations with, and secure the approval of, County before using any portion of the Site.

3.12.5 Unauthorized Use. Personnel of Contractor and the Subcontractors shall not occupy, live upon or otherwise make use of the Site during any time that the Work is not being performed at the Site, except as otherwise approved by County.

3.12.6 Site Security. Contractor is responsible for the security of the Site and all of the Work, as well as the work of the Separate Contractors or County's own forces that occurs on the Site. Fences, barricades and other perimeter security shall be maintained in good condition and secured with locking devices. Damage to fences, barricades or other perimeter security, regardless of the cause, shall be repaired immediately at Contractor's Own Expense. Graffiti and unauthorized postings shall be removed or painted over so as to maintain a clean and neat appearance. Mobile equipment and operable machinery shall be kept locked or otherwise made inoperable whenever left unattended.

3.12.7 Persons on Site. Contractor shall not allow any person, other than the workers on the Project, authorized representatives of a union, or other individuals authorized by County, to come upon any portion of the Site where the Work is being performed. Only authorized personnel will be permitted on the Site. Contractor shall at all times maintain good discipline and order among its employees and the employees of the Subcontractors. Any person in the employ of Contractor or of any Subcontractors whom County may deem, in its sole and absolute discretion, incompetent, unfit, intemperate, troublesome or otherwise undesirable shall be excluded from the Site and shall not again be employed on the Site except with written approval of County and all Losses to Contractor or County associated therewith shall be borne by Contractor at Contractor's Own Expense.

3.12.8 County Uses and Activities. Contractor shall, prior to performing the Work at an operating or occupied County facility, become informed and take into specific account the uses by County and others of the Site and Existing Improvements, including, without limitation, business operations, public uses, employee uses, visitor uses, planned functions and ceremonies, and coordinate its planning, staging, scheduling, barricading and other performance of the Work so as to cause the minimum amount of interference or disturbance, whether before or after operating hours.

3.12.9 Dust, Fumes, Noise. Contractor shall take preventive measures to minimize, and eliminate wherever reasonably possible, generation of dust, fumes and noise.

3.12.10 Confinement of Operations. Contractor shall confine apparatus, the storage of materials and the operations of the workers to limits indicated by Contract Documents or as otherwise directed by County in writing.

3.12.11 Prohibited Substances. Contractor shall not permit (1) the possession or use of alcohol or controlled substances on the Site or (2) smoking in other than designated smoking areas approved by County.

3.12.12 Survey Markers. Contractor shall not disturb or cover any survey markers, monuments or other devices marking property boundaries or corners. If such markers are covered they shall be uncovered and if disturbed they shall be replaced by Contractor by means of the services of a licensed land surveyor. The costs of such uncovering and replacement shall be at Contractor's Own Expense.

3.12.13 Drainage, Erosion. Contractor is responsible for and shall make corrections to changes in patterns of surface water drainage resulting from, and related erosion control made necessary by, the performance of the Work.

3.12.14 Trenches. As required by California Labor Code §6705, if the Contract Price exceeds Twenty-Five Thousand Dollars (\$25,000) and involves the excavation of any trench or trenches five (5) feet or more in depth, Contractor shall, in advance of commencing excavation, submit to County a detailed plan showing the design of shoring, bracing, sloping or other provisions to be made for worker protection from the hazard of caving ground during the excavation of such trench or trenches. If such plan varies from the Shoring Systems Standards established by the Construction Safety Orders of the California Division of Industrial Safety, the plan shall be prepared by a registered civil or structural engineer, employed by Contractor at Contractor's Own Expense. Nothing in this Paragraph 3.12.14 shall be deemed to allow the use of a system less effective than that required by such Construction Safety Orders. No excavation of such trench or trenches shall be commenced until such plan has been approved by County and Architect. Nothing in this Paragraph 3.12.14 shall be construed to impose any liability, including, without limitation, any tort liability, upon the County or upon any of its officers, agents, representatives or employees.

3.13 CUTTING AND PATCHING

Contractor shall be responsible for all cutting, fitting or patching required to complete the Work and to make its parts fit together properly both among themselves and with any Existing Improvements and the work of the Separate Contractors and of County's own forces. In all cases, cutting shall be performed under the supervision of competent mechanics skilled in the applicable trade and openings shall be cut as small as possible to prevent unnecessary damage. Contractor shall not damage or endanger a portion of the Work, Existing Improvements or fully or partially completed construction of County's own forces or of the Separate Contractors by cutting, patching, excavating or otherwise altering such construction. Contractor shall not cut or otherwise alter such Existing Improvements or construction by Separate Contractors or by County's own forces except with the written consent of such Separate Contractors or County, which consent shall not be unreasonably withheld, delayed or conditioned. When asked, Contractor shall not unreasonably withhold from the Separate Contractors or County the Contractor's consent to Separate Contractors' or County's own forces' cutting or other alteration of the Work as required to complete the work of the Separate Contractors or County's own forces.

3.14 UTILITIES AND SANITARY FACILITIES

3.14.1 Contractor Responsibility. Except as otherwise required by California Government Code §4215, Contractor shall contact all relevant utility providers and arrange for obtaining all available information, concerning location of subsurface utility lines. Prior to commencement of any digging, Contractor shall make its own investigation, including exploratory excavations, to determine the locations and type of Work which could result in damage to such utilities. In accordance with California Government Code §§4216 et seq., except in an emergency, Contractor shall contact the appropriate regional notification center at least two (2) the working days, but not more than fourteen (14) Days, prior to commencing any excavation, if the excavation will be conducted in an area which is known, or reasonably should be known, to contain sub-service installations, and shall obtain an inquiry identification number from the regional notification center. Contractor shall not assume, unless actual observed surface conditions at the Site indicate otherwise, that utilities are located in the same location as indicated on the as-built records or other information obtained by Contractor. Contractor shall conduct potholing in advance of digging in any areas where there are not apparent surface conditions at the Site indicating the actual location of underground utilities and be at all times vigilant in watching for any conditions encountered, above or below the surface of the ground, that might indicate that underground utilities are at locations other than those indicated by the as-built records or other information obtained by Contractor. Contractor shall perform its digging operations in a slow and meticulous manner so as to avoid wherever reasonably possible damaging existing underground utilities. Contractor shall, at Contractor's Own Expense, make good any Loss to County or others as a result of Contractor's failure to perform any of its obligations under this Paragraph 3.14.1. Nothing stated in this Paragraph 3.14.1 shall be interpreted as requiring Contractor to do subsurface exploration or potholing for the purpose of locating subsurface utilities at the Site prior to the Bid Closing Deadline or as precluding the Contractor from receiving a Contract Adjustment for unknown subsurface utilities constituting Differing Site Conditions that are encountered in the course of performing the Site investigation or potholing required by this Paragraph 3.14.1.

3.14.2 County Responsibility. If and to the extent required by California Government Code §4215, County assumes the responsibility for removal, relocation, and protection of those existing main or trunkline utility facilities located at the Site at the time of commencement of the Work that are not identified in the Contract Documents. Provided that Contractor has exercised the Standard of Care in performing the Work in accordance with the Contract Documents, Contractor shall be entitled to a Contract Adjustment for, relocating, repairing or removing any utility facilities not indicated in the Contract Documents with reasonable accuracy, including, without limitation, equipment on the Site necessarily idled thereby. Delays caused by County's or a utility owner's failure to provide for the removal or relocation of such utility facilities shall constitute a Compensable Delay. Nothing herein shall be deemed to require County to indicate the presence of existing service laterals or appurtenances whenever the presence of such utilities on the Site can be inferred from the presence of other visible facilities, such as buildings or meter junction boxes located on or adjacent to the Site.

3.14.3 Temporary Utilities. All utilities, including but not limited to electricity, water, gas and telephone, used in performance of the Work (including, without limitation, meters and temporary distribution systems from distribution points to points on Site where a utility is needed and "tap fees") shall be furnished and paid for by Contractor or, if furnished by County, shall be paid for by Contractor at Contractor's Own Expense. Upon Final Completion of the Work, Contractor shall remove all temporary distribution systems. If the Work involves an addition

to an existing facility, Contractor may, with written permission of County, granted or withheld in County's sole and absolute discretion, use County's existing utilities by making prearranged payments to County for utilities used by Contractor. When it is necessary to interrupt any existing utility service to make connections, a minimum of two (2) working days' advance notice shall be given to County. Interruptions shall be of the shortest possible duration and shall be scheduled during a time of Day that minimizes its impact on the operations of the existing facility. Any Loss to County or Contractor associated with interruption of a utility service as a result of Contractor's breach of, or failure to fully comply with, its obligations under this Paragraph shall be paid for by Contractor at Contractor's Own Expense.

3.14.4 Sanitary Facilities. Contractor shall provide sanitary temporary toilet facilities, for the use of all the workers, in no fewer numbers than required by Applicable Laws, plus such additional facilities as may be directed by County. Such facilities shall be maintained in a sanitary condition at all times. Use of existing or permanent toilet facilities shall not be permitted except by written consent of County.

3.15 CLEANING UP

3.15.1 Contractor Responsibility. Contractor at all times shall keep the Site free from debris such as waste, rubbish and excess materials and equipment caused by the performance of the Work. At the end of each Day that Work is performed, Contractor shall not leave debris under, in or about the Site but shall promptly dispose of or remove same from the Site. Without limitation to the other clean up requirements of the Contract Documents, upon Final Completion, Contractor shall: (1) clean the interior and exterior of the buildings, including fixtures, equipment, walls, floors, ceilings, roofs, window sills and ledges, horizontal projections and any areas where debris has collected so surfaces are free from foreign material or discoloration; (2) clean and polish all glass, plumbing fixtures, finish hardware and similar finish surfaces and equipment; and (3) remove temporary fencing, barricades, planking, sanitary facilities and similar temporary facilities from the Site.

3.15.2 Cleanup by County. If Contractor fails upon 24 hours' notice by County to perform its obligation to clean up, County may arrange to do so, and the cost thereof shall be borne by Contractor at Contractor's Own Expense.

3.16 ACCESS TO THE WORK

3.16.1 County. County, Inspectors of Record, Architect and County Consultants, and their representatives, and such other persons as authorized by County, shall at all times have access to the Work, either in preparation or in progress. Contractor shall provide safe and proper facilities for such access so that they and their representatives may perform their functions safely.

3.16.2 Separate Contractors. County, using its own forces or those of Separate Contractors, may, at any time during the performance of the Work, enter the Site for the purpose of performing construction or for any other purpose. Contractor shall cooperate with County, County's own forces and Separate Contractors and not interfere with other work being done by them or on their behalf.

3.16.3 Delivery Routes. Contractor shall arrange for delivery of material over routes designated by County.

3.17 INTELLECTUAL PROPERTY RIGHTS

Contractor shall pay all royalties and license fees relating to use of Intellectual Property Rights pertaining to Work performed. Contractor shall defend suits or claims for infringement of Intellectual Property Rights and shall defend, indemnify and hold harmless the Indemnitees from Loss on account thereof in accordance with the terms of Section 3.18, below, unless the infringement is due to a particular design, process, product or product of a particular manufacturer that is required by the Contract Documents; provided, however, that if Contractor has information leading it to believe that the use of a particular design, process or product required by the Contract Documents would constitute an infringement of an Intellectual Property Right, then Contractor shall nonetheless be responsible to provide such defense, indemnification and hold harmless if such information is not promptly furnished in writing to County.

3.18 INDEMNIFICATION

3.18.1 Contractor's Indemnity Obligation. To the fullest extent permitted by Applicable Laws, Contractor agrees to indemnify, immediately defend at its own expense and hold harmless, County, Board of Supervisors, and each of their respective members, officers, employees, agents, insurers and volunteers ("Indemnitee(s)"), through legal counsel reasonably acceptable to County, from any and all Losses, whether real or alleged, regardless of whether caused in part by such Indemnitee or its agents, servants or independent contractors who are directly responsible to such Indemnitee, arising out of or relating to any of the following:

- .1 any act or omission of Contractor or a Subcontractor, of any Tier;
- .2 the activities of Contractor or a Subcontractor, of any Tier, on the Site or on other properties related to performance of the Work or the preparation for performance of the Work;
- .3 the payment or nonpayment of any Subcontractor, of any Tier, for the Work performed, except where such nonpayment is the result of a breach by County of its payment obligations under the Contract Documents;
- .4 the existence or dispersal of any Hazardous Substances or Mold on the Site as a result of the failure of Contractor or a Subcontractor, of any Tier, to comply with its obligations under the Contract Documents;
- .5 the violation by Contractor or a Subcontractor, of any Tier, of an obligation under Section 3.17, above, involving infringement of an Intellectual Property Right; or
- .6 the violation by Contractor or a Subcontractor, of any Tier, of any Applicable Law, including, without limitation, the violation of any requirement of the State of California General Permit for Storm Water Discharges Associated with Construction Activity and subsequent amendments or orders for construction activities as applicable thereto (including, without limitation, the requirements of a Storm Water Pollution Prevention Plan) or the violation of any applicable requirement of any local or regional Air Quality Management District (AQMD) (including, without limitation, a violation of any of the requirements set forth in the County MOU with AQMD dated January 6, 2004 Agenda Item 3.1 (for projects in the Coachella Valley) or AQMD Rule 403 (for projects west of the Coachella Valley));

PROVIDED, HOWEVER, that nothing contained herein shall be construed as obligating Contractor to indemnify an Indemnitee for Losses resulting from the sole negligence, active negligence or willful misconduct of such Indemnitee or its agents, servants or independent contractors who are directly responsible to such Indemnitee or from a defect in design furnished by such Indemnitee, where such sole negligence, active negligence, willful misconduct or design defect has been determined by agreement of Contractor and that Indemnitee or has been adjudged by the final and binding findings of a court or arbitrator of competent jurisdiction. In instances where the active negligence or willful misconduct of an Indemnitee or its agents, servants or independent contractors who are directly responsible to such Indemnitee or a defect in a design furnished by such an Indemnitee accounts for only a portion or percentage of the Loss involved, the obligation of Contractor will be for that portion or percentage of the Loss not due to such active negligence, willful misconduct or design defect.

3.18.2 Indemnification of Adjacent Property Owners. In the event Contractor enters into an agreement with the owners of any adjacent property to enter upon such property for the purpose of performing the Work or other activities incidental to the Work, Contractor shall fully indemnify, defend and hold harmless any person or entity which owns or has any interest in such adjacent property against any Loss resulting from the acts or omissions of the Contractor or its Subcontractors. The form and content of such indemnification agreement shall be approved by County prior to commencement of any Work on or around such property.

3.18.3 Insurance and Employment Benefits. The indemnification, defense and hold harmless obligations of Contractor under this Section 3.18, as well as any such obligations stated elsewhere in the Contract Documents: (1) shall not be limited by the amounts or types of insurance (or the deductibles or self-insured retention amounts of such insurance) which any Indemnitee, Contractor or any Subcontractor carries or is required to carry under the terms of the Contract Documents; (2) is independent of and in addition to the Indemnitees' rights under the insurance to be provided by an Indemnitee, Contractor or any Subcontractor; and (3) shall not be limited, in the event of a claim

against an Indemnitee by an employee of Contractor, a Subcontractor, anyone directly or indirectly employed by them or anyone for whose acts they may be liable, by a limitation on amount or type of damages, compensation or benefits payable by or for Contractor or Subcontractor under any worker's compensation act, disability benefit act or other employee benefit program.

3.18.4 Subcontractor Indemnity Agreements. Contractor agrees to obtain or cause to be obtained executed defense and indemnity agreements with provisions identical to those set forth in this Section 3.18 from each and every Subcontractor, of every Tier.

3.18.5 Implied Indemnity Rights. Notwithstanding anything stated in this Section 3.18 or elsewhere in the Contract Documents to the contrary, an Indemnitee's right to seek equitable indemnity and contribution from Contractor is in no way diminished, limited or precluded by any agreement by Contractor to provide express contractual indemnity to such Indemnitee. Contractor's obligations under this Section 3.18 shall be deemed to completely eliminate and preclude any right by Contractor to seek contractual or equitable indemnity or contribution from any Indemnitee for any Loss covered by the Contractor's express indemnification obligations under this Section 3.18.

3.18.6 Obligation to Defend. The Contractor's obligation to defend under this Section 3.18 includes, without limitation, the obligation to immediately reimburse an Indemnitee for any attorney's fees, court costs (statutory and non-statutory), arbitration and mediation expenses, professional, expert and consultant fees, investigative costs, postage costs, document copying costs, telecopy costs and any and all other costs and expenses associated with defense of such Indemnitee as and when incurred by any Indemnitee in defense of a claim by any third person or entity as a result of Contractor's failure or refusal to comply with its immediate defense obligation to such Indemnitee. Nothing stated in this Section 3.18 or elsewhere in the Contract Documents shall be interpreted as providing or implying that the obligation of Contractor to defend an Indemnitee against an alleged Loss that is within the scope of the Contractor's indemnification obligation under this Section 3.18 or under any other provision of the Contract Documents is to any extent released, excused, limited or relieved by a finding, determination, award or judgment by a court or arbitrator that the alleged Loss was due to circumstances not within the scope of such indemnification obligation.

3.18.7 Enforcement. The Indemnitees shall be entitled to recover their attorneys' fees, costs and expert and consultant costs in pursuing or enforcing a right to defense and/or indemnification under this Section 3.18.

3.19 LABOR, WAGES, PAYROLL RECORDS

3.19.1 Public Work. This Work is a "public work" as defined in Labor Code §1720 and must be performed in accordance with the requirements of Labor Code §§1720 to 1850 and Title 8 California Code of Regulations §§16000 to 17270, which govern the payment of prevailing wage rates on public works projects.

3.19.2 Prevailing Wage Rates. Pursuant to the provisions of Article 2 (commencing at §1770), Chapter 1, Part 7, Division 2 of the Labor Code of California, the Board of Supervisors has obtained the general prevailing rate of per diem wages and the general prevailing rate for holiday and overtime Work in the locality in which the Work is to be performed for each craft, classification or type of worker needed to execute the Work from the Director of the Department of Industrial Relations. These rates are on file with County and copies will be made available to any interested party on request. Contractor shall post a copy of such wage rates at the Site. The adoption of such wage rates is not a representation that labor can be obtained at these rates. It is the responsibility of Contractor to inform itself as to the local labor conditions. Holiday and overtime Work, when permitted by Applicable Laws, shall be paid for at a rate of at least one and one-half times the adopted rate of per diem wages, unless otherwise specified. Holidays shall be defined in the collective bargaining agreement applicable to each particular craft, classification or type of worker employed.

3.19.3 Unclassified Workers. Any worker employed to perform the Work not covered by any classification listed in the general prevailing wage rate of per diem wages determined by the Director of Industrial Relations shall be paid not less than the minimum rate of wages specified therein for the classification which most nearly corresponds to the Work to be performed by him/her, and such minimum wage rate shall be retroactive to time of initial employment of such person on the Project in such classification.

3.19.4 Per Diem Wages. Contractor shall pay or shall cause to be paid each worker engaged in the Work not less than the general prevailing rate of per diem wages determined by the Director of the Department of Industrial Relations, regardless of any contractual relationship which may be alleged to exist between Contractor or any of the Subcontractors and such workers. Pursuant to California Labor Code §1773.1, per diem wages are deemed to include employer payments for health and welfare, pension, vacation, travel time and subsistence pay.

3.19.5 Applicable Laws. Contractor represents and warrants that the Contractor's Bid and the Contract Price includes funds sufficient to allow Contractor to comply with all Applicable Laws governing the labor or services to be provided. Contractor shall defend and indemnify the Indemnitees in accordance with Section 3.18, above, for any violation of any Applicable Law, including but not limited to California Labor Code §2810, and agrees to pay all assessments, including wages and penalties, made against County in relation to such violations.

3.19.6 Posting at Site. Contractor shall post at appropriate conspicuous points on the Site the prevailing wage rates of the Department of Industrial Relations in accordance with 8 California Code of Regulations 16100(b).

3.19.7 Worker Hours. As provided in Article 3 (commencing at §1810), Chapter 1, Part 7, Division 2 of the California Labor Code, eight (8) hours of labor shall constitute a legal day's work. The standard work day of any worker employed at any time by Contractor or any of the Subcontractors performing the Work, or any part of the Work, shall, except as hereinafter provided, be limited and restricted by Contractor to eight (8) hours per day, between the hours of 6:00 A.M. and 6:00 P.M. (unless otherwise required by Applicable Laws), plus one-half hour unpaid lunch approximately midway through the shift, provided that Contractor or any of the Subcontractors may establish a four day/ten-hour schedule consistent with Applicable Laws pertaining to payment of prevailing wages and the provisions any applicable collective bargaining agreement. A regular-work week shall constitute forty (40) hours during any one week. Notwithstanding the provisions hereinabove set forth, the parties hereto may agree to changes in the work day or the work week as permitted by Applicable Laws, and Contractor and all Subcontractors must pay the appropriate prevailing wage rate for those hours and days worked.

3.19.8 Overtime. Overtime work performed by employees of Contractor or any of the Subcontractors shall be compensated according to the applicable general prevailing rate established by the Department of Industrial Relations for holiday and overtime work for each craft, classification or type of worker in the locality in which the Work is to be performed.

3.19.9 Payroll Records. It shall be the sole responsibility of Contractor to ensure compliance with the provisions of Applicable Laws and the Contract Documents relating to maintenance and submission of payroll records. Pursuant to the provisions of California Labor Code §1776, Contractor shall keep, and shall cause each Subcontractor performing any portion of the Work to keep, accurate certified payroll records, showing the name, address, social security number, worker classification and straight-time and overtime hours worked each Day and week, and the actual per diem wages paid to each journeyman, apprentice, worker or other employee employed by Contractor in connection with the Work. Certified payroll records must be in the payroll reporting format prescribed by the Division of Labor Standards Enforcement. If there is no work by Contractor or a Subcontractor in a given week, Contractor must keep and submit a certified "Nonperformance" payroll record, indicating "no work" for that week. Contractor shall submit all certified payroll records to County in complete, unredacted form with an original signature on the Statement of Compliance, along with, and as a condition to, its Applications for Payment. Additionally, payroll records shall be available for inspection at all reasonable hours at the principal office of Contractor on the following basis:

.1 a certified copy of an employee's payroll record shall be made available for inspection or furnished to such employee or his or her authorized representative on request;

.2 a certified copy of all such payroll records shall be made available for inspection or furnished upon request to County, the Division of Labor Standards Enforcement and/or the Division of Apprenticeship Standards of the Department of Industrial Relations or such other person or entity as designated by County;

.3 a certified copy of all such payroll records shall be made available upon request by the public for inspection or the copying thereof, provided that (1) such request is made by the public through either County, the Division of Apprenticeship Standards or the Division of Labor Standards Enforcement of the Department of Industrial Relations, (2) such requested payroll records have not previously been provided pursuant to Subparagraph 3.19.9.2,

above, then the requesting individual or entity shall, prior to being provided the records, reimburse the costs of preparation by Contractor, the Subcontractors and the entity through which the request was made, and (3) the public shall not be given access to records at the principal office of Contractor;

.4 Contractor and each Subcontractor shall within ten (10) Days after receipt of a written request file a certified copy of such payroll records with the person or entity that requested the records;

.5 Contractor shall provide, and shall cause each Subcontractor to provide, payroll records as defined in Title 8 California Code of Regulations §16000 to County within ten (10) Days after receipt of written request, at no cost to County;

.6 any copy of such payroll records made available for inspection by, and copies furnished to, the public shall be redacted in a manner so as to prevent disclosure of an individual's name, address, and social security number, except that any copy made available for inspection by, and copies furnished to, a joint labor-management committee established pursuant to the federal Labor Management Cooperation Act of 1978 (29 U.S.C. Section 175a) shall be marked or redacted only to prevent disclosure of an individual's name and social security number, and in either event, the name and address of Contractor or the Subcontractor performing the Work shall not be so obliterated; and

.7 any copy made available to an agency included in the Joint Enforcement Strike Force on the Underground Economy established pursuant to Section 329 of the Unemployment Insurance Code and other law enforcement agencies investigating violations of law shall, upon request, be provided nonredacted copies of certified payroll records;

.8 Contractor shall inform County concurrently with the submission of its initial Application for Payment, of the location of such payroll records, including the street address, city and county, and thereafter shall, within five (5) working days, provide a notice of any change of location and address of such payroll records.

3.19.10 Apprentices. Contractor acknowledges that, even if performance of the Work involves a dollar amount greater than or a number of working days greater than that specified in California Labor Code §1777.5, it shall be the sole responsibility of Contractor, for all apprentice occupations, to ensure compliance with California Labor Code §1777.5, including, without limitation, the following provisions:

.1 Apprentices of any crafts or trades may be employed and, when required by California Labor Code §1777.5, shall be employed provided they are properly registered in full compliance with the provisions of the California Labor Code.

.2 Every such apprentice shall be paid the prevailing rate of per diem wages for apprentices in the trade to which he or she is registered and shall be employed only at the work of the craft or trade to which he or she is registered.

.3 Only apprentices, as defined in California Labor Code §3077, who are in training under apprenticeship standards and written apprentice agreements under Chapter 4 (commencing at §3070), Division 3 of the California Labor Code, are eligible to be employed at the apprentice wage rate on Public Works. The employment and training of each apprentice shall be in accordance with either: (1) the apprenticeship standards and apprentice agreements under which he or she is training, or (2) the rules and regulations of the California Apprenticeship Council.

.4 Contractor and any of the Subcontractors employing workers in any apprenticeable craft or trade in performing any of the Work shall apply to the applicable joint apprenticeship committee for a certificate approving Contractor or the Subcontractor under the applicable apprenticeship standards and fixing the ratio of apprentices to journeymen employed in performing the Work.

.5 Prior to commencing the Work, Contractor shall submit contract award information to an applicable apprenticeship program that can supply apprentices to the Site of the Work. The information submitted shall include an estimate of journeyman hours to be performed under the Construction Contract, the number of apprentices proposed to be employed, and the approximate dates the apprentices would be employed. A copy of this information shall also be submitted to County if requested by County.