

**SUBMITTAL TO THE BOARD OF SUPERVISORS
COUNTY OF RIVERSIDE, STATE OF CALIFORNIA**



ITEM: 2.2
(ID # 13479)

MEETING DATE:
Tuesday, September 29, 2020

FROM : EXECUTIVE OFFICE:

SUBJECT: EXECUTIVE OFFICE: FY 20/21 Funded Vacant Position Status and Vacancy Rate Status. All Districts. [\$0]

RECOMMENDED MOTION: That the Board of Supervisors:

1. Receive and file the funded vacant position status report;
2. Approve the amendment to the recommended Vacancy Rate for the Probation Department to 10%; and,
3. Approve the amendment to the recommended Vacancy Rate for each department within the Riverside University Health System (Public Health, Behavioral Health, Clinics and Medical Center) to 15%.


ACTION:


Frankie Z. Ezzat, Chief Deputy County Executive Officer 9/23/2020

MINUTES OF THE BOARD OF SUPERVISORS

On motion of Supervisor Jeffries, seconded by Supervisor Hewitt and duly carried by unanimous vote, IT WAS ORDERED that the above matter is approved as recommended.

Ayes: Jeffries, Spiegel, Washington, Perez and Hewitt
Nays: None
Absent: None
Date: September 29, 2020
xc: EO

Kecia R. Harper
Clerk of the Board
By: 
Deputy

**SUBMITTAL TO THE BOARD OF SUPERVISORS COUNTY OF RIVERSIDE,
STATE OF CALIFORNIA**

FINANCIAL DATA	Current Fiscal Year:	Next Fiscal Year:	Total Cost:	Ongoing Cost
COST	\$ 0	\$ 0	\$ 0	\$ 0
NET COUNTY COST	\$ 0	\$ 0	\$ 0	\$ 0
SOURCE OF FUNDS: N/A			Budget Adjustment: No	
			For Fiscal Year: 20/21	

C.E.O. RECOMMENDATION: Approved

BACKGROUND:

On June 23, 2020, the Executive Office reported vacant position recommendations to the Board of Supervisors, and the Board approved a vacancy rate of 5% - 15% for county departments. Additionally, the Executive Office was directed to return in September regarding the countywide vacant funded position status.

The Executive Office, in collaboration with county departments, completed the analysis on the total number of vacant funded positions, with the primary objective to better understand the funding sources of a department's authorized positions. A second objective was to identify any potential savings if any of the vacant funded positions were removed.

Out of the 3,610 vacant funded positions, a total of 202 positions have been deleted, for a savings of \$804,067 in net county cost (NCC). Most of the other positions deleted were funded by other sources. The remaining positions are scheduled to be filled. The Executive Office will review the remaining positions throughout the year and report back to the Board via the Quarterly Budget Reports on their status.

As of this submittal, the Sheriff's Department has not submitted their analysis of either funded or unfunded vacant positions to the Executive Office, so they are not included in any of the reports or calculations. Below is a summary of the reports included.

Summary of Vacant Funded Positions (Attachment A)

This is a high-level summary of the 3,610 vacant funded positions by department.

Summary of Vacant Funded Positions by Portfolio (Attachment B)

The total vacant funded positions were compiled by portfolio, as well as an average funding percentage, which shows the type of funding sources, such as state, federal, fees, reimbursement from other departments, and net county cost.

Vacant Funded Position by Funding Source (Attachment C)

This report is sorted by portfolio and department and lists each vacant funded job classification. It also lists by percentage the source of funding by state, federal, reimbursement from other

**SUBMITTAL TO THE BOARD OF SUPERVISORS COUNTY OF RIVERSIDE,
STATE OF CALIFORNIA**

departments/fees, and NCC. The revenue percentage by classification was calculated by the department. Throughout the year, the Executive Office will work with departments to monitor hiring progress.

3,306 positions remain vacant and funded, with the majority of the positions coming from departments that have continuous recruitments, which occur due to attrition, difficulty to recruit, and/or demand for services.

Summary of Deleted Positions (Attachment D)

Out of the 3,610 vacant funded positions, a total of 202 positions have been deleted, for a savings of \$804,067 of net county cost. Most of the other positions deleted were funded by other sources.

There are different reasons as to why the number of deleted vacant funded positions are low, with the primary reason being that departments plan on filling the positions during FY 20/21. Additionally, some departments with the highest number of vacancies have these positions as a result of attrition factors, or positions not being able to be filled timely due to a difficulty in recruiting, length of time for background checks, etc.

The Executive Office will continue to work with the departments to ensure vacant positions are filled or deleted. If the recruitment objectives have changed, we will work with the departments to remove the positions. The Executive Office will provide updates to the Board via the Quarterly Budget Reports.

Vacancy Rate Report – (Attachment E)

The Board approved a vacancy rate of 5% for most departments, with a 12% vacancy rate for the District Attorney, and 15% for the Sheriff and DPSS departments. Working with departments, the Executive Office is recommending an amended vacancy rate for the entire Riverside University Health System of 15% each for Public Health, Behavioral Health, Correctional Health, Clinics and Medical Center, as well as an amended vacancy rate for the Probation Department of 10%. As this is the first year with Board-approved vacancy rates, variances between the vacancy rate and the actual rate will vary. However, over time, with continuous monitoring by the Executive Office and procedures put in place for budget submittals, departments will move closer to their Board-approved vacancy rates.

Impact on Residents and Businesses

There is no direct impact to residents and businesses.

Additional Fiscal Information

Analysis of vacant positions, both funded and unfunded, is an ongoing process that will be reported back to the Board via Quarterly Budget Reports. The next update will be provided during the Mid-Year Quarterly Report, scheduled for February 2021.

**SUBMITTAL TO THE BOARD OF SUPERVISORS COUNTY OF RIVERSIDE,
STATE OF CALIFORNIA**

Attachments

Attachment A – Summary of Vacant Funded Positions

Attachment B – Summary of Vacant Funded Positions by Portfolio

Attachment C – Vacant Funded Position by Funding Source

Attachment D – Summary of Deleted Positions

Attachment E – Vacancy Rate Report



SUMMARY OF VACANT FUNDED POSITIONS
(Excludes the Sheriff's Department)

DEPARTMENT	FILLED	FUNDED	DELETED	TOTAL POSITIONS
Agricultural Commissioner		5		5
Animal Services		1		1
Assessor		2		2
Assessor - CREST		6		6
Assessor-Assessment Services	1			1
Assessor-Bus Personal Property	1	1		2
Assessor-Commercial	2			2
Assessor-Public Services		3		3
Assessor-Residential	1	2		3
Assessor-Support Services		5		5
Assessor-Title	3			3
Auditor Controller		7		7
Business Community Services - Agency Administration	2	1		3
Business Community Services - Business Services	1	3		4
Community Action Partnership	2	8		10
Continuum of Care	3	7		10
Cooperative Extension		3		3
Correctional Health Systems	6	150		156
County Clerk-Recorder		7	1	8
County Counsel		7		7
County Free Library		1		1
County Recorder		6		6
County Services Area 152 NPDES	1	9		10
County Services Area Admin		1	1	2
Department of Environmental Health		10		10
Dept of Waste Resources	4	59		63
District Attorney		60		60
DPSS Administration	28	1,039	130	1,197
Emergency Management Department		1		1
Facilities Management Administration	1	5	2	8
Fair & National Date Festival			1	1
Fire Protection		5		5
Fire Protection-Contract Svc		8		8
Fleet Services		6		6
Flood Control	4	54		58
FM - Custodial		11	5	16
FM - Design & Constructions		1	2	3
FM - Energy Management		1		1
FM - Maintenance			3	3
FM - Parking			3	3
FM - Real Estate	1	1	3	5
Housing Authority	1	18		19
HUD-CDBG/HOME Grants	1	1		2
Human Resources		38		38
IHSS Public Authority		22		22
Med Indigent Services Program		25		25
Mental Health Administration	1	84	4	89



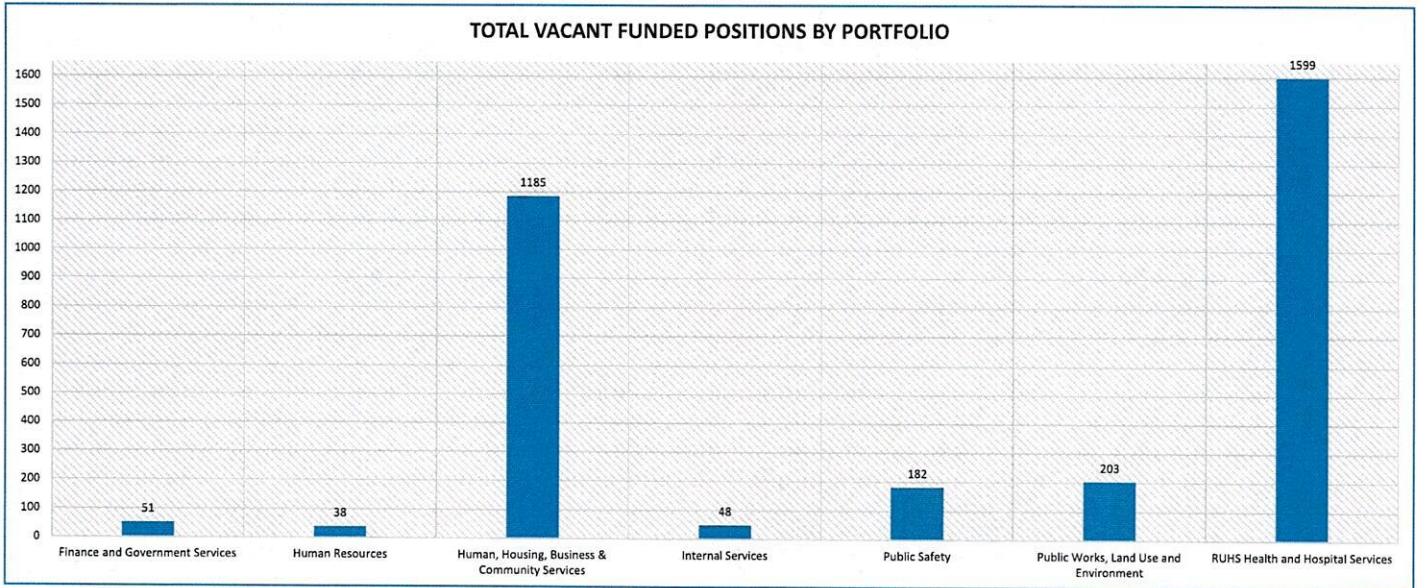
SUMMARY OF VACANT FUNDED POSITIONS
(Excludes the Sheriff's Department)

DEPARTMENT	FILLED	FUNDED	DELETED	TOTAL POSITIONS
Mental Health Detention	12	19	2	33
Mental Health Substance Abuse	3	27		30
Mental Health Treatment	4	295	24	323
MH-Public Guardian		7		7
Office on Aging	2	28		30
Parks		2	1	3
Probation		57		57
Probation - Administration & Support		5		5
Probation - Juvenile Hall	1	45		46
Purchasing		2		2
RC Children & Family Commission		2		2
RCIT		17		17
RCIT - PSEC		4		4
Registrar of Voters	1	3		4
Riv Co Dep of Child Support Services		18	17	35
RUHS - California Children Services		17		17
RUHS - Community Health Clinics	4	172		176
RUHS - Medical Center		751		751
RUHS - Public Health		52		52
TLMA - Admin	2	3		5
TLMA - Aviation		2		2
TLMA - Building & Safety		12		12
TLMA - Code Enforcement		1		1
TLMA - Counter Services		3		3
TLMA - Planning		9		9
TLMA - Surveyor		6		6
TLMA - Transportation	7	35		42
TLMA - Transportation Equipment		1		1
Treasurer-Tax Collector		5	3	8
Veterans' Services		2		2
Waste Resource Mgmt Dist - Operating		1		1
Workforce Development	2	19		21
TOTAL POSITIONS	102	3,306	202	3,610



VACANT FUNDED POSITIONS BY PORTFOLIO
(Excludes the Sheriff's Department)

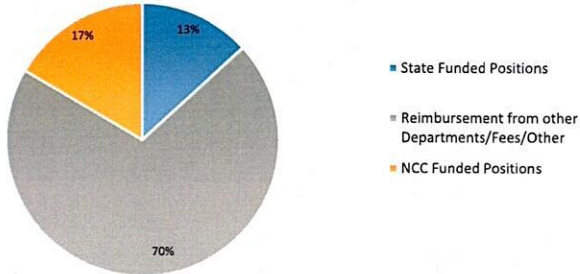
PORTFOLIO	Average Funding Percentage				
	Total Vacant Funded Positions	State Funded Positions	Federal Funded Positions	Reimbursement from other Departments/Fees/Other	NCC Funded Positions
Finance and Government Services	51	13%	0%	70%	17%
Human Resources	38	0%	0%	100%	0%
Human, Housing, Business & Community Services	1185	18%	60%	14%	8%
Internal Services	48	0%	0%	99%	1%
Public Safety	182	42%	2%	24%	32%
Public Works, Land Use and Environment	203	20%	0%	80%	0%
RUHS Health and Hospital Services	1599	37%	34%	21%	8%
Grand Total	3306	31%	30%	31%	8%



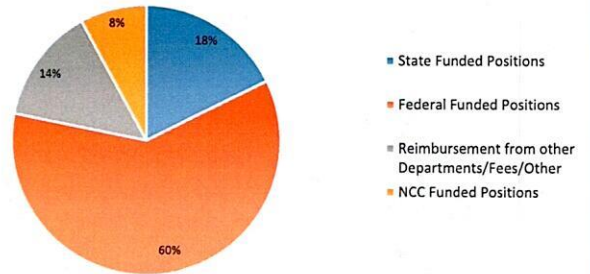


VACANT FUNDED POSITIONS BY PORTFOLIO
(Excludes the Sheriff's Department)

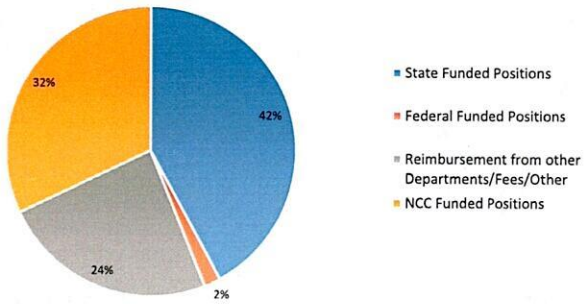
Finance and Government Services Vacant Positions by Funding Source



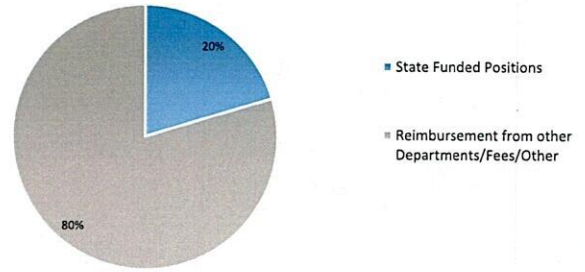
Human, Housing, Business & Community Services Vacant Positions by Funding Source



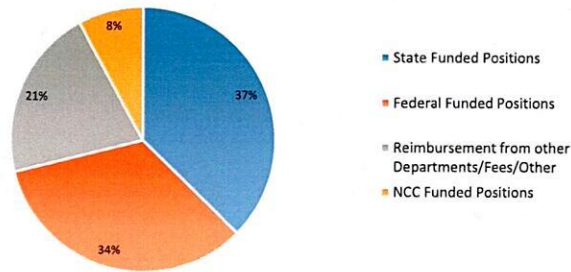
Public Safety Vacant Positions by Funding Source



Public Works, Land Use and Environment Vacant Positions by Funding Source



RUHS Health and Hospital Services Vacant Positions by Funding Source





VACANT FUNDED POSITION BY FUNDING SOURCE
(Excludes the Sheriff's Department)

Portfolio	Department	Job Class Name	State	Federal	Reimbursement from other Departments/Fees/Other	NCC	Total
Finance and Government Services	Assessor	ASST ASSESSOR/COUNTY CLK/REC	70%	0%	0%	30%	1
Finance and Government Services	Assessor	SR APPRAISER	70%	0%	0%	30%	1
Finance and Government Services	Assessor-Bus Personal Property	ACR TECHNICIAN II	70%	0%	0%	30%	1
Finance and Government Services	Assessor-Residential	ACR TECHNICIAN I	70%	0%	0%	30%	1
Finance and Government Services	Assessor-Residential	APPRAISER II	70%	0%	0%	30%	1
Finance and Government Services	Auditor Controller	ACCOUNTANT II	0%	0%	100%	0%	1
Finance and Government Services	Auditor Controller	ACCOUNTANT III	0%	0%	100%	0%	1
Finance and Government Services	Auditor Controller	ACCOUNTING TECHNICIAN I	0%	0%	100%	0%	2
Finance and Government Services	Auditor Controller	CHF ACCOUNTANT	0%	0%	0%	100%	1
Finance and Government Services	Auditor Controller	INTERNAL AUDITOR II	0%	0%	0%	100%	1
Finance and Government Services	Auditor Controller	SUPV ACCOUNTANT	0%	0%	0%	100%	1
Finance and Government Services	County Clerk-Recorder	ACR TECHNICIAN II	0%	0%	100%	0%	1
Finance and Government Services	County Clerk-Recorder	ACR TECHNICIAN III	0%	0%	100%	0%	1
Finance and Government Services	County Clerk-Recorder	ARCHIVIST/RECORDS ANALYST II	0%	0%	100%	0%	1
Finance and Government Services	County Clerk-Recorder	GIS ANALYST	0%	0%	100%	0%	1
Finance and Government Services	County Clerk-Recorder	IT APPS DEVELOPER III	0%	0%	100%	0%	1
Finance and Government Services	County Clerk-Recorder	IT BUSINESS SYS ANALYST III	0%	0%	100%	0%	1
Finance and Government Services	County Clerk-Recorder	SUPV ARCHIVES & REC TECH I	0%	0%	100%	0%	1
Finance and Government Services	County Counsel	DEP COUNTY COUNSEL IV	0%	0%	100%	0%	6
Finance and Government Services	County Counsel	LEGAL SUPPORT ASSISTANT II - CN	0%	0%	100%	0%	1
Finance and Government Services	County Recorder	ACR TECHNICIAN TRAINEE	0%	0%	100%	0%	5
Finance and Government Services	County Recorder	PRINCIPAL DEPUTY ACCR	0%	0%	100%	0%	1
Finance and Government Services	Treasurer-Tax Collector	ACCOUNTING TECHNICIAN I	0%	0%	100%	0%	1
Finance and Government Services	Treasurer-Tax Collector	ACCOUNTING TECHNICIAN II	0%	0%	100%	0%	1
Finance and Government Services	Treasurer-Tax Collector	SR ACCOUNTANT	0%	0%	100%	0%	1
Finance and Government Services	Treasurer-Tax Collector	SUPV ACCOUNTANT	0%	0%	100%	0%	1
Finance and Government Services	Treasurer-Tax Collector	SUPV ACCOUNTING TECHNICIAN	0%	0%	100%	0%	1
Finance and Government Services	Assessor-Public Services	ACR TECHNICIAN III	0%	0%	100%	0%	1
Finance and Government Services	Assessor-Public Services	ACR TECHNICIAN TRAINEE	0%	0%	100%	0%	1
Finance and Government Services	Assessor-Public Services	SUPV DEPUTY ACR	0%	0%	100%	0%	1
Finance and Government Services	Assessor-Support Services	ACR TECHNICIAN I	0%	0%	100%	0%	1
Finance and Government Services	Assessor-Support Services	ADMINISTRATIVE SERVICES ANALYST II	0%	0%	100%	0%	1
Finance and Government Services	Assessor-Support Services	BUSINESS PROCESS ANALYST II	0%	0%	100%	0%	1
Finance and Government Services	Assessor-Support Services	CHF DEP ASSESSOR/CLERK/REC	0%	0%	100%	0%	1
Finance and Government Services	Assessor-Support Services	IT BUSINESS SYS ANALYST II	0%	0%	100%	0%	1
Finance and Government Services	Assessor - CREST	ACCOUNTING TECHNICIAN I	45%	0%	0%	55%	1
Finance and Government Services	Assessor - CREST	ADMINISTRATIVE SERVICES ANALYST II	45%	0%	0%	55%	1
Finance and Government Services	Assessor - CREST	BUSINESS PROCESS ANALYST I	45%	0%	0%	55%	1
Finance and Government Services	Assessor - CREST	IT OFFICER I	45%	0%	0%	55%	1
Finance and Government Services	Assessor - CREST	IT SYSTEMS ADMINISTRATOR III	45%	0%	0%	55%	1
Finance and Government Services	Assessor - CREST	PRINCIPAL ACCOUNTANT	45%	0%	0%	55%	1
Human Resources	Human Resources	BUSINESS PROCESS ANALYST III-CE	0%	0%	100%	0%	1
Human Resources	Human Resources	CLAIMS ADJUSTER II	0%	0%	100%	0%	1
Human Resources	Human Resources	CLAIMS PROGRAM SUPERVISOR	0%	0%	100%	0%	1
Human Resources	Human Resources	EXCLUSIVE CARE PLAN ADMIN	0%	0%	100%	0%	1
Human Resources	Human Resources	HEALTH SERVICES ASST - CN	0%	0%	100%	0%	1
Human Resources	Human Resources	Human Resources Analyst III	0%	0%	100%	0%	3
Human Resources	Human Resources	Human Resources Clerk - CN	0%	0%	100%	0%	4
Human Resources	Human Resources	Human Resources Division Manager	0%	0%	100%	0%	1
Human Resources	Human Resources	HUMAN RESOURCES DIVISION MGR	0%	0%	100%	0%	1
Human Resources	Human Resources	Human Resources Services Manager	0%	0%	100%	0%	1
Human Resources	Human Resources	Human Resources Technician II	0%	0%	100%	0%	2
Human Resources	Human Resources	LICENSED VOC NURSE II - CN	0%	0%	100%	0%	1
Human Resources	Human Resources	Office Assistant II	0%	0%	100%	0%	1
Human Resources	Human Resources	Office Assistant III - CN	0%	0%	100%	0%	2
Human Resources	Human Resources	PHYSICIAN IV - CE	0%	0%	100%	0%	1
Human Resources	Human Resources	Principal Human Resources Analyst	0%	0%	100%	0%	1
Human Resources	Human Resources	PROCUREMENT CONTRACT SPECIALIST	0%	0%	100%	0%	1
Human Resources	Human Resources	REGISTERED NURSE IV - CE	0%	0%	100%	0%	1
Human Resources	Human Resources	REGISTERED NURSE V - CE	0%	0%	100%	0%	1
Human Resources	Human Resources	SAFETY DIVISION MGR	0%	0%	100%	0%	1
Human Resources	Human Resources	Sr Human Resources Analyst	0%	0%	100%	0%	6
Human Resources	Human Resources	Sr Human Resources Clerk - CN	0%	0%	100%	0%	1
Human Resources	Human Resources	SR SAFETY COORDINATOR	0%	0%	100%	0%	3
Human Resources	Human Resources	WELLNESS EDUCATOR	0%	0%	100%	0%	1
Human, Housing, Business & Community Services	Business Community Services - Agency Administration	ACCOUNTING TECHNICIAN II	0%	0%	100%	0%	1



VACANT FUNDED POSITION BY FUNDING SOURCE
(Excludes the Sheriff's Department)

Portfolio	Department	Job Class Name	State	Federal	Reimbursement from other Departments/Fees/Other	NCC	Total
Human, Housing, Business & Community Services	Business Community Services - Business Services	DEVELOPMENT SPECIALIST II	0%	50%	50%	0%	2
Human, Housing, Business & Community Services	Business Community Services - Business Services	PRINCIPAL DEVELOPMENT SPECIALIST	0%	50%	50%	0%	1
Human, Housing, Business & Community Services	Community Action Partnership	ACCOUNTANT II	0%	100%	0%	0%	1
Human, Housing, Business & Community Services	Community Action Partnership	Community Services Assistant	0%	100%	0%	0%	4
Human, Housing, Business & Community Services	Community Action Partnership	Housing Specialist II	0%	100%	0%	0%	2
Human, Housing, Business & Community Services	Community Action Partnership	Support Services Technician	0%	100%	0%	0%	1
Human, Housing, Business & Community Services	Continuum of Care	ADMINISTRATIVE SERVICES ANALYST II	100%	0%	0%	0%	2
Human, Housing, Business & Community Services	Continuum of Care	ADMINISTRATIVE SERVICES ASSISTANT	50%	0%	0%	50%	1
Human, Housing, Business & Community Services	Continuum of Care	DEP DIRECTOR OF EDA	50%	0%	0%	50%	1
Human, Housing, Business & Community Services	Continuum of Care	Program Specialist II	50%	0%	0%	50%	1
Human, Housing, Business & Community Services	Continuum of Care	RESEARCH SPECIALIST I	50%	0%	0%	50%	1
Human, Housing, Business & Community Services	Continuum of Care	SR PROGRAM SPECIALIST	50%	0%	0%	50%	1
Human, Housing, Business & Community Services	Cooperative Extension	ACCOUNTING ASSISTANT I	0%	0%	0%	100%	1
Human, Housing, Business & Community Services	Cooperative Extension	Office Assistant II	0%	0%	0%	100%	2
Human, Housing, Business & Community Services	County Free Library	Admin Svc Assistant	0%	0%	100%	0%	1
Human, Housing, Business & Community Services	DPSS Administration	ACCOUNTANT II	24%	70%	0%	6%	3
Human, Housing, Business & Community Services	DPSS Administration	ACCOUNTING ASSISTANT II	24%	70%	0%	6%	1
Human, Housing, Business & Community Services	DPSS Administration	ACCOUNTING TECHNICIAN I	24%	70%	0%	6%	8
Human, Housing, Business & Community Services	DPSS Administration	ADMIN SVCS ANALYST II	24%	70%	0%	6%	13
Human, Housing, Business & Community Services	DPSS Administration	ADMIN SVCS ASST	24%	70%	0%	6%	7
Human, Housing, Business & Community Services	DPSS Administration	ADMIN SVCS MGR II	24%	70%	0%	6%	6
Human, Housing, Business & Community Services	DPSS Administration	ADMIN SVCS OFFICER	24%	70%	0%	6%	3
Human, Housing, Business & Community Services	DPSS Administration	ADMIN SVCS SUPV	24%	70%	0%	6%	3
Human, Housing, Business & Community Services	DPSS Administration	APPEALS SPECIALIST	24%	70%	0%	7%	1
Human, Housing, Business & Community Services	DPSS Administration	BEHAVIORAL HEALTH SVC SUPV	39%	61%	0%	0%	1
Human, Housing, Business & Community Services	DPSS Administration	BUSINESS PROCESS ANALYST II	24%	70%	0%	7%	3
Human, Housing, Business & Community Services	DPSS Administration	BUSINESS PROCESS MGR	24%	70%	0%	7%	1
Human, Housing, Business & Community Services	DPSS Administration	Buyer Assistant	24%	70%	0%	6%	1
Human, Housing, Business & Community Services	DPSS Administration	CLINICAL THERAPIST II	39%	61%	0%	0%	0
Human, Housing, Business & Community Services	DPSS Administration	COMPUTER BASED TRAINING OFFCR	24%	70%	0%	7%	2
Human, Housing, Business & Community Services	DPSS Administration	DEP DIR OF PUBLIC SOCIAL SVCS	24%	70%	0%	7%	2
Human, Housing, Business & Community Services	DPSS Administration	DPSS FACILITIES PROJ PLANNER	24%	70%	0%	6%	3
Human, Housing, Business & Community Services	DPSS Administration	ELIGIBILITY SERVICES CLERK	30%	63%	0%	7%	66
Human, Housing, Business & Community Services	DPSS Administration	EMPLOYMENT SVCS COUNSELOR II	88%	12%	0%	0%	7



VACANT FUNDED POSITION BY FUNDING SOURCE
(Excludes the Sheriff's Department)

Portfolio	Department	Job Class Name	State	Federal	Reimbursement from other Departments/Fees/Other	NCC	Total
Human, Housing, Business & Community Services	DPSS Administration	EXECUTIVE ASSISTANT II	24%	70%	0%	6%	1
Human, Housing, Business & Community Services	DPSS Administration	FACILITIES PLANNING SUPERVISOR	24%	70%	0%	6%	1
Human, Housing, Business & Community Services	DPSS Administration	Facilities Support Supervisor	24%	70%	0%	6%	1
Human, Housing, Business & Community Services	DPSS Administration	Graphic Arts Illustrator	24%	70%	0%	7%	1
Human, Housing, Business & Community Services	DPSS Administration	INTAKE SPECIALIST	18%	76%	0%	6%	3
Human, Housing, Business & Community Services	DPSS Administration	Office Assistant II	24%	70%	0%	6%	2
Human, Housing, Business & Community Services	DPSS Administration	Office Assistant III	24%	70%	0%	6%	58
Human, Housing, Business & Community Services	DPSS Administration	PARENT/YOUTH PARTNER	7%	84%	0%	9%	2
Human, Housing, Business & Community Services	DPSS Administration	PRINCIPAL ACCOUNTANT	24%	70%	0%	6%	1
Human, Housing, Business & Community Services	DPSS Administration	Program Specialist II	24%	70%	0%	7%	5
Human, Housing, Business & Community Services	DPSS Administration	PROGRAM SPECIALIST II, CSS	24%	70%	0%	7%	16
Human, Housing, Business & Community Services	DPSS Administration	REGIONAL MGR, SELF SUFF & AP	24%	70%	0%	7%	3
Human, Housing, Business & Community Services	DPSS Administration	REGIONAL MGR, SOCIAL SERVICES	24%	70%	0%	7%	4
Human, Housing, Business & Community Services	DPSS Administration	RESEARCH SPECIALIST I	24%	70%	0%	7%	2
Human, Housing, Business & Community Services	DPSS Administration	RESEARCH SPECIALIST II	24%	70%	0%	7%	0
Human, Housing, Business & Community Services	DPSS Administration	SECRETARY I	24%	70%	0%	6%	6
Human, Housing, Business & Community Services	DPSS Administration	SECRETARY II	24%	70%	0%	6%	5
Human, Housing, Business & Community Services	DPSS Administration	SOCIAL SERVICE PLANNER	18%	76%	0%	6%	3
Human, Housing, Business & Community Services	DPSS Administration	SOCIAL SERVICES ASSISTANT	18%	76%	0%	6%	92
Human, Housing, Business & Community Services	DPSS Administration	SOCIAL SVCS PRACTITIONER II	18%	76%	0%	6%	75
Human, Housing, Business & Community Services	DPSS Administration	SOCIAL SVCS PRACTITIONER III	18%	76%	0%	6%	344
Human, Housing, Business & Community Services	DPSS Administration	SOCIAL SVCS SUPERVISOR I	18%	76%	0%	6%	9
Human, Housing, Business & Community Services	DPSS Administration	SOCIAL SVCS SUPERVISOR II	18%	76%	0%	6%	57
Human, Housing, Business & Community Services	DPSS Administration	SR ACCOUNTANT	24%	70%	0%	6%	4
Human, Housing, Business & Community Services	DPSS Administration	SR ACCOUNTING ASST	24%	70%	0%	6%	2
Human, Housing, Business & Community Services	DPSS Administration	Sr Administrative Analyst (D)	24%	70%	0%	6%	0
Human, Housing, Business & Community Services	DPSS Administration	SR ADMINISTRATIVE SVCS ANALYST	24%	70%	0%	6%	2
Human, Housing, Business & Community Services	DPSS Administration	SR CLINICAL THERAPIST	39%	61%	0%	0%	0
Human, Housing, Business & Community Services	DPSS Administration	SR COMMUNITY PROG SPECIALIST	24%	70%	0%	6%	1
Human, Housing, Business & Community Services	DPSS Administration	SR EMPLOYMENT SVCS COUNSELOR	88%	12%	0%	0%	3
Human, Housing, Business & Community Services	DPSS Administration	SR PROGRAM SPECIALIST	24%	70%	0%	7%	6
Human, Housing, Business & Community Services	DPSS Administration	Staff Development Officer	24%	70%	0%	7%	1
Human, Housing, Business & Community Services	DPSS Administration	Support Services Technician	24%	70%	0%	6%	0
Human, Housing, Business & Community Services	DPSS Administration	SUPV ACCOUNTING TECHNICIAN	24%	70%	0%	6%	3



VACANT FUNDED POSITION BY FUNDING SOURCE
(Excludes the Sheriff's Department)

Portfolio	Department	Job Class Name	State	Federal	Reimbursement from other Departments/Fees/Other	NCC	Total
Human, Housing, Business & Community Services	DPSS Administration	SUPV APPEALS SPECIALIST	24%	70%	0%	7%	2
Human, Housing, Business & Community Services	DPSS Administration	SUPV EMPLOYMENT SVCS COUNSELOR	88%	12%	0%	0%	3
Human, Housing, Business & Community Services	DPSS Administration	SUPV PROGRAM SPECIALIST	24%	70%	0%	6%	2
Human, Housing, Business & Community Services	DPSS Administration	Supv Research Specialist	24%	70%	0%	6%	2
Human, Housing, Business & Community Services	DPSS Administration	Systems Accountant II	24%	70%	0%	6%	2
Human, Housing, Business & Community Services	DPSS Administration	Training Officer	24%	70%	0%	7%	1
Human, Housing, Business & Community Services	DPSS Administration	CUSTOMER SUPPORT REP II	24%	70%	0%	6%	1
Human, Housing, Business & Community Services	DPSS Administration	CUSTOMER SUPPORT REP III	24%	70%	0%	6%	2
Human, Housing, Business & Community Services	DPSS Administration	LEAD CUSTOMER SUPPORT REP	24%	70%	0%	6%	1
Human, Housing, Business & Community Services	DPSS Administration	SUPV CUSTOMER SUPPORT REP	24%	70%	0%	6%	0
Human, Housing, Business & Community Services	DPSS Administration	DPSS OFFICE SUPPORT SUPV	24%	70%	0%	6%	13
Human, Housing, Business & Community Services	DPSS Administration	ELIGIBILITY TECHNICIAN II	30%	63%	0%	7%	87
Human, Housing, Business & Community Services	DPSS Administration	ELIGIBILITY TECHNICIAN III	30%	63%	0%	7%	35
Human, Housing, Business & Community Services	DPSS Administration	ELIGIBILITY SUPERVISOR	30%	63%	0%	7%	22
Human, Housing, Business & Community Services	DPSS Administration	REVENUE & RECOVERY TECH II	24%	70%	0%	6%	0
Human, Housing, Business & Community Services	DPSS Administration	REVENUE & RECOVERY SUPV II	24%	70%	0%	6%	0
Human, Housing, Business & Community Services	DPSS Administration	BUYER I	24%	70%	0%	6%	1
Human, Housing, Business & Community Services	DPSS Administration	INVESTIGATIVE TECH II	24%	70%	0%	6%	5
Human, Housing, Business & Community Services	DPSS Administration	SUPV INVESTIGATIVE TECH	24%	70%	0%	6%	2
Human, Housing, Business & Community Services	DPSS Administration	WELFARE FRAUD INVESTIGATOR	24%	70%	0%	6%	6
Human, Housing, Business & Community Services	DPSS Administration	PRINTING TECH SPECIALIST II	24%	70%	0%	6%	1
Human, Housing, Business & Community Services	DPSS Administration	ADMIN SVCS MGR I	24%	70%	0%	6%	4
Human, Housing, Business & Community Services	DPSS Administration	Contracts & Grants Analyst	24%	70%	0%	6%	3
Human, Housing, Business & Community Services	Housing Authority	ACCOUNTANT II	0%	100%	0%	0%	2
Human, Housing, Business & Community Services	Housing Authority	Housing Authority Mnt Worker (D)	0%	100%	0%	0%	1
Human, Housing, Business & Community Services	Housing Authority	Housing Specialist I	0%	100%	0%	0%	3
Human, Housing, Business & Community Services	Housing Authority	Housing Specialist II	0%	100%	0%	0%	5
Human, Housing, Business & Community Services	Housing Authority	Housing Specialist III	0%	100%	0%	0%	1
Human, Housing, Business & Community Services	Housing Authority	Office Assistant II	0%	100%	0%	0%	2
Human, Housing, Business & Community Services	Housing Authority	SR ACCOUNTANT	0%	100%	0%	0%	1
Human, Housing, Business & Community Services	Housing Authority	SUPV DEVELOPMENT SPECIALIST	0%	100%	0%	0%	3
Human, Housing, Business & Community Services	IHSS Public Authority	ADMIN SVCS ANALYST II	42%	45%	14%	0%	1
Human, Housing, Business & Community Services	IHSS Public Authority	ADMIN SVCS MGR II	42%	45%	14%	0%	1
Human, Housing, Business & Community Services	IHSS Public Authority	COMMUNITY PROGRAM SPEC II	42%	45%	14%	0%	1



VACANT FUNDED POSITION BY FUNDING SOURCE
(Excludes the Sheriff's Department)

Portfolio	Department	Job Class Name	State	Federal	Reimbursement from other Departments/Fees/Other	NCC	Total
Human, Housing, Business & Community Services	IHSS Public Authority	HUMAN RESOURCES CLERK	42%	45%	14%	0%	2
Human, Housing, Business & Community Services	IHSS Public Authority	Office Assistant III	42%	45%	14%	0%	7
Human, Housing, Business & Community Services	IHSS Public Authority	SOCIAL SERVICES ASSISTANT	42%	45%	14%	0%	4
Human, Housing, Business & Community Services	IHSS Public Authority	SOCIAL SVCS PRACTITIONER II	42%	45%	14%	0%	4
Human, Housing, Business & Community Services	IHSS Public Authority	SR COMMUNITY PROG SPECIALIST	0%	0%	100%	0%	1
Human, Housing, Business & Community Services	IHSS Public Authority	SUPV PROGRAM SPECIALIST	42%	45%	14%	0%	1
Human, Housing, Business & Community Services	Office on Aging	ACCOUNTING TECHNICIAN I	50%	50%	0%	0%	1
Human, Housing, Business & Community Services	Office on Aging	Administrative Services Analyst I	0%	100%	0%	0%	2
Human, Housing, Business & Community Services	Office on Aging	Executive Assistant I - At Will	0%	75%	25%	0%	1
Human, Housing, Business & Community Services	Office on Aging	Office Assistant II	0%	50%	50%	0%	1
Human, Housing, Business & Community Services	Office on Aging	Office Assistant III	0%	75%	25%	0%	1
Human, Housing, Business & Community Services	Office on Aging	Office on Aging Program Specialist II	0%	50%	50%	0%	1
Human, Housing, Business & Community Services	Office on Aging	Office on Aging Services Assistant	0%	0%	100%	0%	2
Human, Housing, Business & Community Services	Office on Aging	Office on Aging Services Assistant		100%	0%	0%	3
Human, Housing, Business & Community Services	Office on Aging	Registered Nurse II	0%	0%	100%	0%	1
Human, Housing, Business & Community Services	Office on Aging	Social Services Practitioner II	0%	0%	100%	0%	3
Human, Housing, Business & Community Services	Office on Aging	Social Services Practitioner III	0%	0%	100%	0%	4
Human, Housing, Business & Community Services	Office on Aging	Social Services Practitioner III		100%	0%	0%	2
Human, Housing, Business & Community Services	Office on Aging	Social Services Practitioner III	50%	50%	0%	0%	1
Human, Housing, Business & Community Services	Office on Aging	Social Services Supervisor II	0%	0%	100%	0%	1
Human, Housing, Business & Community Services	Office on Aging	Supervising Office Assistant II	0%	0%	100%	0%	1
Human, Housing, Business & Community Services	Office on Aging	Supervising Office Assistant II		100%	0%	0%	1
Human, Housing, Business & Community Services	Office on Aging	Supervising Program Specialist	0%	100%	0%	0%	1
Human, Housing, Business & Community Services	Office on Aging	Volunteer Services Coordinator	0%	35%	65%	0%	1
Human, Housing, Business & Community Services	Registrar of Voters	Chief Deputy Registrar of Voters	0%	0%	0%	100%	1
Human, Housing, Business & Community Services	Registrar of Voters	Elections Coordinator Assistant	0%	0%	0%	100%	1
Human, Housing, Business & Community Services	Registrar of Voters	Elections Technician II - Services	0%	0%	0%	100%	1
Human, Housing, Business & Community Services	Riv Co Dep of Child Support Services	ACCOUNTING ASSISTANT I	34%	66%	0%	0%	1
Human, Housing, Business & Community Services	Riv Co Dep of Child Support Services	Child Support Interviewer	34%	66%	0%	0%	1
Human, Housing, Business & Community Services	Riv Co Dep of Child Support Services	Child Support Services Regional Manager	34%	66%	0%	0%	1
Human, Housing, Business & Community Services	Riv Co Dep of Child Support Services	Deputy Child Support Attorney IV-S	34%	66%	0%	0%	1
Human, Housing, Business & Community Services	Riv Co Dep of Child Support Services	Office Assistant II	34%	66%	0%	0%	1
Human, Housing, Business & Community Services	Riv Co Dep of Child Support Services	Paralegal II	34%	66%	0%	0%	3
Human, Housing, Business & Community Services	Riv Co Dep of Child Support Services	Sr Child Support Specialist	34%	66%	0%	0%	3



VACANT FUNDED POSITION BY FUNDING SOURCE
(Excludes the Sheriff's Department)

Portfolio	Department	Job Class Name	State	Federal	Reimbursement from other Departments/Fees/Other	NCC	Total
Human, Housing, Business & Community Services	Riv Co Dep of Child Support Services	Sr Human Resources Clerk	34%	66%	0%	0%	1
Human, Housing, Business & Community Services	Riv Co Dep of Child Support Services	Staff Development Officer	34%	66%	0%	0%	2
Human, Housing, Business & Community Services	Riv Co Dep of Child Support Services	Support Services Technician	34%	66%	0%	0%	1
Human, Housing, Business & Community Services	Riv Co Dep of Child Support Services	SUPV ACCOUNTING TECHNICIAN	34%	66%	0%	0%	1
Human, Housing, Business & Community Services	Riv Co Dep of Child Support Services	Supv Deputy Child Support Attorney	34%	66%	0%	0%	2
Human, Housing, Business & Community Services	Veterans' Services	Office Assistant II	0%	0%	0%	100%	1
Human, Housing, Business & Community Services	Veterans' Services	Office Assistant III	0%	0%	0%	100%	1
Human, Housing, Business & Community Services	Workforce Development	Accounting Technician I	0%	100%	0%	0%	1
Human, Housing, Business & Community Services	Workforce Development	Development Specialist I	0%	100%	0%	0%	4
Human, Housing, Business & Community Services	Workforce Development	DEVELOPMENT SPECIALIST II	0%	100%	0%	0%	7
Human, Housing, Business & Community Services	Workforce Development	Development Specialist III	0%	100%	0%	0%	2
Human, Housing, Business & Community Services	Workforce Development	Office Assistant III	0%	100%	0%	0%	1
Human, Housing, Business & Community Services	Workforce Development	PRINCIPAL ACCOUNTANT	0%	100%	0%	0%	1
Human, Housing, Business & Community Services	Workforce Development	SR ACCOUNTANT	0%	100%	0%	0%	1
Human, Housing, Business & Community Services	Workforce Development	SUPV DEVELOPMENT SPECIALIST	0%	100%	0%	0%	2
Human, Housing, Business & Community Services	County Services Area 152 NPDES	Grounds Worker	0%	0%	100%	0%	1
Human, Housing, Business & Community Services	County Services Area 152 NPDES	Office Assistant III	0%	0%	100%	0%	1
Human, Housing, Business & Community Services	County Services Area 152 NPDES	Public Works Operator I	0%	0%	100%	0%	2
Human, Housing, Business & Community Services	County Services Area 152 NPDES	Public Works Operator II	0%	0%	100%	0%	1
Human, Housing, Business & Community Services	County Services Area 152 NPDES	Snr Development Specialist	0%	0%	100%	0%	1
Human, Housing, Business & Community Services	County Services Area 152 NPDES	Sr CSA Facilities Caretaker	0%	0%	100%	0%	3
Human, Housing, Business & Community Services	County Services Area Admin	Admin Svc Assistant	0%	0%	100%	0%	1
Human, Housing, Business & Community Services	RC Children & Family Commission	Program Specialist II	100%	0%	0%	0%	2
Human, Housing, Business & Community Services	HUD-CDBG/HOME Grants	SUPV DEVELOPMENT SPECIALIST	0%	100%	0%	0%	1
Internal Services	Facilities Management Administration	ACCOUNTING TECHNICIAN I	0%	0%	100%	0%	1
Internal Services	Facilities Management Administration	ADMIN SVCS ANALYST II	0%	0%	100%	0%	1
Internal Services	Facilities Management Administration	ADMIN SVCS SUPV	0%	0%	100%	0%	1
Internal Services	Facilities Management Administration	PRINCIPAL ACCOUNTANT	0%	0%	100%	0%	1
Internal Services	Facilities Management Administration	SR ACCOUNTANT	0%	0%	100%	0%	1
Internal Services	Fleet Services	AUTOMOTIVE MECHANIC I	0%	0%	100%	0%	4
Internal Services	Fleet Services	SR AUTOMOTIVE MECHANIC	0%	0%	100%	0%	1
Internal Services	Fleet Services	SR FLEET SERVICES ASSISTANT	0%	0%	100%	0%	1
Internal Services	FM - Design & Constructions	ADMIN SVCS ANALYST II	0%	0%	100%	0%	1
Internal Services	Purchasing	BUYER II	0%	0%	70%	30%	1
Internal Services	Purchasing	SR PROCUREMENT CONTRACT SPEC	0%	0%	100%	0%	1
Internal Services	FM - Custodial	CUSTODIAN	0%	0%	100%	0%	10
Internal Services	FM - Custodial	LEAD CUSTODIAN	0%	0%	100%	0%	1
Internal Services	FM - Real Estate	SR REAL PROPERTY AGENT	0%	0%	100%	0%	1
Internal Services	FM - Energy Management	DEVELOPMENT SPECIALIST II	0%	0%	100%	0%	1
Internal Services	RCIT	IT Applications Developer II	0%	0%	100%	0%	1
Internal Services	RCIT	IT Business Systems Analyst III	0%	0%	100%	0%	3
Internal Services	RCIT	IT Communications Technician II	0%	0%	100%	0%	1
Internal Services	RCIT	IT Communications Technician III	0%	0%	100%	0%	1
Internal Services	RCIT	IT Manager III	0%	0%	100%	0%	1



VACANT FUNDED POSITION BY FUNDING SOURCE
(Excludes the Sheriff's Department)

Portfolio	Department	Job Class Name	State	Federal	Reimbursement from other Departments/Fees/Other	NCC	Total
Internal Services	RCIT	IT Supv Systems Administrator	0%	0%	100%	0%	1
Internal Services	RCIT	IT Supv User Support Technician	0%	0%	100%	0%	1
Internal Services	RCIT	IT User Support Technician II	0%	0%	100%	0%	6
Internal Services	RCIT	RCIT Data Network Engineer III	0%	0%	100%	0%	1
Internal Services	RCIT	Support Services Technician	0%	0%	100%	0%	1
Internal Services	RCIT - PSEC	IT Communications Technician I	0%	0%	100%	0%	1
Internal Services	RCIT - PSEC	IT Communications Technician II	0%	0%	100%	0%	2
Internal Services	RCIT - PSEC	IT Manager IV	0%	0%	100%	0%	1
Public Safety	Animal Services	Chief Veterinarian	0%	0%	0%	100%	1
Public Safety	District Attorney	Ast Chf District Attorney Investigator	0%	0%	0%	100%	1
Public Safety	District Attorney	Budget/Reimbursement Analyst	0%	0%	0%	100%	1
Public Safety	District Attorney	Chief Deputy District Attorney	0%	0%	0%	100%	1
Public Safety	District Attorney	D. A. Hazardous Waste Examiner	0%	0%	100%	0%	1
Public Safety	District Attorney	D.A. Insurance Fraud Specialist	0%	0%	100%	0%	1
Public Safety	District Attorney	Deputy District Attorney III	50%	0%	50%	0%	12
Public Safety	District Attorney	District Attorney Executive Officer	0%	0%	0%	100%	1
Public Safety	District Attorney	Investigative Technician II	100%	0%	0%	0%	4
Public Safety	District Attorney	IT User Support Technician III	0%	0%	0%	100%	1
Public Safety	District Attorney	Managing Deputy District Attorney	0%	0%	0%	100%	2
Public Safety	District Attorney	Office Assistant III	20%	0%	0%	80%	4
Public Safety	District Attorney	Paralegal I	50%	0%	50%	0%	1
Public Safety	District Attorney	Paralegal II	50%	0%	50%	0%	2
Public Safety	District Attorney	Real Estate Fraud Examiner	0%	0%	100%	0%	1
Public Safety	District Attorney	SR ACCOUNTANT	0%	0%	0%	100%	1
Public Safety	District Attorney	Sr District Attorney Investigator	50%	0%	50%	0%	5
Public Safety	District Attorney	Sr District Attorney Investigator B	50%	0%	50%	0%	5
Public Safety	District Attorney	Sr Paralegal	100%	0%	0%	0%	1
Public Safety	District Attorney	Sr Victim/Witness Claims Technician	100%	0%	0%	0%	2
Public Safety	District Attorney	Stock Clerk	0%	0%	0%	100%	1
Public Safety	District Attorney	Supv District Attorney Investigator	0%	0%	50%	50%	2
Public Safety	District Attorney	Victim Services Advocate I	100%	0%	0%	0%	3
Public Safety	District Attorney	Victim Services Advocate II	100%	0%	0%	0%	4
Public Safety	District Attorney	Victim Services Regional Manager	100%	0%	0%	0%	1
Public Safety	District Attorney	Victim/Witness Claims Technician	100%	0%	0%	0%	2
Public Safety	Fire Protection	FIRE COMM DISPATCHER II	0%	0%	100%	0%	1
Public Safety	Fire Protection	IT COMMUNICATIONS TECH II	0%	0%	100%	0%	3
Public Safety	Fire Protection	MAINTENANCE ELECTRICIAN	0%	0%	100%	0%	1
Public Safety	Fire Protection-Contract Svc	FIRE PREVENTION TECHNICIAN	0%	0%	100%	0%	1
Public Safety	Fire Protection-Contract Svc	FIRE SAFETY SPECIALIST	0%	0%	100%	0%	3
Public Safety	Fire Protection-Contract Svc	FIRE SYSTEMS INSPECTOR	0%	0%	100%	0%	2
Public Safety	Fire Protection-Contract Svc	Office Assistant III	0%	0%	100%	0%	2
Public Safety	Probation	DEP PROBATION OFFICER II	100%	0%	0%	0%	32
Public Safety	Probation	Office Assistant II	0%	0%	0%	100%	1
Public Safety	Probation	Office Assistant III	100%	0%	0%	0%	10
Public Safety	Probation	PROBATION ASSISTANT	100%	0%	0%	0%	5
Public Safety	Probation	SECRETARY II	0%	0%	0%	100%	1
Public Safety	Probation	SR PROBATION OFFICER	100%	0%	0%	0%	7
Public Safety	Probation	SUPV PROBATION OFFICER	0%	0%	0%	100%	1
Public Safety	Probation - Administration & Support	CHF DEP PROBATION OFFICER	100%	0%	0%	0%	1
Public Safety	Probation - Administration & Support	DEP PROBATION OFFICER II	100%	0%	0%	0%	1
Public Safety	Probation - Administration & Support	RESEARCH ANALYST	100%	0%	0%	0%	1
Public Safety	Probation - Administration & Support	RESEARCH SPECIALIST II	0%	0%	0%	100%	1
Public Safety	Probation - Administration & Support	SR ACCOUNTANT	100%	0%	0%	0%	1
Public Safety	Probation - Juvenile Hall	BLDG MAINT MECHANIC	0%	0%	0%	100%	1
Public Safety	Probation - Juvenile Hall	BLDG MAINT SUPERVISOR	0%	0%	0%	100%	1
Public Safety	Probation - Juvenile Hall	CORRECTIONAL SR FOOD SVC WRKR	100%	0%	0%	0%	1
Public Safety	Probation - Juvenile Hall	GARDENER	0%	0%	0%	100%	1
Public Safety	Probation - Juvenile Hall	Office Assistant III	100%	0%	0%	0%	1
Public Safety	Probation - Juvenile Hall	PROBATION ASSISTANT	100%	0%	0%	0%	1
Public Safety	Probation - Juvenile Hall	PROBATION CORR OFFICER II	100%	0%	0%	0%	35
Public Safety	Probation - Juvenile Hall	SR PROBATION CORR OFFICER	100%	0%	0%	0%	4
Public Safety	Emergency Management Department	Emergency Services Coordinator	0%	100%	0%	0%	1
Public Works, Land Use and Environment	Agricultural Commissioner	AG & STANDARDS INVESTIGATOR II	100%	0%	0%	0%	1
Public Works, Land Use and Environment	Agricultural Commissioner	AG & STANDARDS INVESTIGATOR III	100%	0%	0%	0%	1
Public Works, Land Use and Environment	Agricultural Commissioner	AG & STANDARDS INVESTIGATOR IV	100%	0%	0%	0%	3



VACANT FUNDED POSITION BY FUNDING SOURCE
(Excludes the Sheriff's Department)

Portfolio	Department	Job Class Name	State	Federal	Reimbursement from other Departments/Fees/Other	NCC	Total
Public Works, Land Use and Environment	Dept of Waste Resources	Admin Services Analyst II	0%	0%	100%	0%	1
Public Works, Land Use and Environment	Dept of Waste Resources	Admin Services Assistant	0%	0%	100%	0%	1
Public Works, Land Use and Environment	Dept of Waste Resources	ASSOC CIVIL ENGINEER	0%	0%	100%	0%	3
Public Works, Land Use and Environment	Dept of Waste Resources	Crew Lead Worker	0%	0%	100%	0%	4
Public Works, Land Use and Environment	Dept of Waste Resources	Engineering Aide	0%	0%	100%	0%	1
Public Works, Land Use and Environment	Dept of Waste Resources	Engineering Tech I	0%	0%	100%	0%	4
Public Works, Land Use and Environment	Dept of Waste Resources	ENGINEERING TECH II	0%	0%	100%	0%	1
Public Works, Land Use and Environment	Dept of Waste Resources	Equipment Maint Worker	0%	0%	100%	0%	2
Public Works, Land Use and Environment	Dept of Waste Resources	EQUIPMENT OPERATOR II	0%	0%	100%	0%	5
Public Works, Land Use and Environment	Dept of Waste Resources	Gate Fee Program Supervisor	0%	0%	100%	0%	1
Public Works, Land Use and Environment	Dept of Waste Resources	Gate Services Assistant	0%	0%	100%	0%	5
Public Works, Land Use and Environment	Dept of Waste Resources	Hazardous Waste Inspector II	0%	0%	100%	0%	1
Public Works, Land Use and Environment	Dept of Waste Resources	JUNIOR ENGINEER	0%	0%	100%	0%	2
Public Works, Land Use and Environment	Dept of Waste Resources	Landfill Safety Monitor	0%	0%	100%	0%	2
Public Works, Land Use and Environment	Dept of Waste Resources	Maintenance & Construction Worker	0%	0%	100%	0%	11
Public Works, Land Use and Environment	Dept of Waste Resources	Mechanics Helper	0%	0%	100%	0%	1
Public Works, Land Use and Environment	Dept of Waste Resources	Ops & Maint Supervisor	0%	0%	100%	0%	2
Public Works, Land Use and Environment	Dept of Waste Resources	Recycling Specialist II	0%	0%	100%	0%	1
Public Works, Land Use and Environment	Dept of Waste Resources	Sr Accounting Assistant	0%	0%	100%	0%	1
Public Works, Land Use and Environment	Dept of Waste Resources	SR CIVIL ENGINEER	0%	0%	100%	0%	1
Public Works, Land Use and Environment	Dept of Waste Resources	Sr Equipment Operator	0%	0%	100%	0%	5
Public Works, Land Use and Environment	Dept of Waste Resources	Sr Gate Services Assistant	0%	0%	100%	0%	2
Public Works, Land Use and Environment	Dept of Waste Resources	Volunteer Svcs Program Manager	0%	0%	100%	0%	1
Public Works, Land Use and Environment	Dept of Waste Resources	Waste Mgmt Program Coordinator	0%	0%	100%	0%	1
Public Works, Land Use and Environment	Flood Control	ACCOUNTING TECHNICIAN II	0%	0%	100%	0%	1
Public Works, Land Use and Environment	Flood Control	ADMIN SVCS ANALYST II	0%	0%	100%	0%	1
Public Works, Land Use and Environment	Flood Control	ASSOC CIVIL ENGINEER	0%	0%	100%	0%	6
Public Works, Land Use and Environment	Flood Control	ASST CIVIL ENGINEER	0%	0%	100%	0%	2
Public Works, Land Use and Environment	Flood Control	ASST REG FLD CNTRL MAINT SPV	0%	0%	100%	0%	1
Public Works, Land Use and Environment	Flood Control	AUTOMOTIVE MECHANIC II	0%	0%	100%	0%	1
Public Works, Land Use and Environment	Flood Control	BUYER II	0%	0%	100%	0%	1
Public Works, Land Use and Environment	Flood Control	Engineering Tech I	0%	0%	100%	0%	2
Public Works, Land Use and Environment	Flood Control	ENGINEERING TECH II	0%	0%	100%	0%	7
Public Works, Land Use and Environment	Flood Control	EQUIPMENT OPERATOR I	0%	0%	100%	0%	3



VACANT FUNDED POSITION BY FUNDING SOURCE
(Excludes the Sheriff's Department)

Portfolio	Department	Job Class Name	State	Federal	Reimbursement from other Departments/Fees/Other	NCC	Total
Public Works, Land Use and Environment	Flood Control	Equipment Parts Storekeeper	0%	0%	100%	0%	1
Public Works, Land Use and Environment	Flood Control	EQUIPMT FLEET SUPERVISOR	0%	0%	100%	0%	1
Public Works, Land Use and Environment	Flood Control	GIS SPECIALIST I	0%	0%	100%	0%	1
Public Works, Land Use and Environment	Flood Control	GIS SPECIALIST II	0%	0%	100%	0%	1
Public Works, Land Use and Environment	Flood Control	HEAVY EQUIPMENT MECHANIC	0%	0%	100%	0%	1
Public Works, Land Use and Environment	Flood Control	JUNIOR ENGINEER	0%	0%	100%	0%	4
Public Works, Land Use and Environment	Flood Control	MAINTENANCE & CONST WKR	0%	0%	100%	0%	7
Public Works, Land Use and Environment	Flood Control	Office Assistant II	0%	0%	100%	0%	1
Public Works, Land Use and Environment	Flood Control	Office Assistant III	0%	0%	100%	0%	2
Public Works, Land Use and Environment	Flood Control	PRINCIPAL ACCOUNTANT	0%	0%	100%	0%	1
Public Works, Land Use and Environment	Flood Control	PRINCIPAL ENG TECH - PLS/PE	0%	0%	100%	0%	3
Public Works, Land Use and Environment	Flood Control	PUBLIC INFO SPECIALIST	0%	0%	100%	0%	1
Public Works, Land Use and Environment	Flood Control	SR CIVIL ENGINEER	0%	0%	100%	0%	1
Public Works, Land Use and Environment	Flood Control	Sr Equipment Operator	0%	0%	100%	0%	1
Public Works, Land Use and Environment	Flood Control	SR HEAVY EQUIPMENT MECHANIC	0%	0%	100%	0%	1
Public Works, Land Use and Environment	Flood Control	SR REAL PROPERTY AGENT	0%	0%	100%	0%	1
Public Works, Land Use and Environment	Flood Control	STOREKEEPER	0%	0%	100%	0%	1
Public Works, Land Use and Environment	Parks	BUYER II - PARKS	0%	0%	100%	0%	1
Public Works, Land Use and Environment	Parks	NATURAL RESOURCES SPEC - PARKS	0%	0%	100%	0%	1
Public Works, Land Use and Environment	TLMA - Admin	Office Assistant II	0%	0%	100%	0%	2
Public Works, Land Use and Environment	TLMA - Admin	SUPV OFFICE ASSISTANT II	0%	0%	100%	0%	1
Public Works, Land Use and Environment	TLMA - Aviation	REAL PROPERTY AGENT III	0%	0%	100%	0%	1
Public Works, Land Use and Environment	TLMA - Aviation	SUPV DEVELOPMENT SPECIALIST	0%	0%	100%	0%	1
Public Works, Land Use and Environment	TLMA - Building & Safety	ADMIN SVCS ASST	0%	0%	100%	0%	1
Public Works, Land Use and Environment	TLMA - Building & Safety	BLDG INSPECTOR II	0%	0%	100%	0%	2
Public Works, Land Use and Environment	TLMA - Building & Safety	LAND USE TECHNICIAN II	0%	0%	100%	0%	1
Public Works, Land Use and Environment	TLMA - Building & Safety	Office Assistant II	0%	0%	100%	0%	1
Public Works, Land Use and Environment	TLMA - Building & Safety	Office Assistant III	0%	0%	100%	0%	3
Public Works, Land Use and Environment	TLMA - Building & Safety	PLANS EXAMINER III	0%	0%	100%	0%	1
Public Works, Land Use and Environment	TLMA - Building & Safety	PLANS EXAMINER IV	0%	0%	100%	0%	1
Public Works, Land Use and Environment	TLMA - Building & Safety	SR BUILDING INSPECTOR	0%	0%	100%	0%	1
Public Works, Land Use and Environment	TLMA - Building & Safety	TLMA ADMIN SERVICES MANAGER	0%	0%	100%	0%	1
Public Works, Land Use and Environment	TLMA - Code Enforcement	CODE ENFORCEMENT II	0%	0%	100%	0%	1
Public Works, Land Use and Environment	TLMA - Counter Services	AGENCY PROGRAM SUPERVISOR	0%	0%	100%	0%	1



VACANT FUNDED POSITION BY FUNDING SOURCE
(Excludes the Sheriff's Department)

Portfolio	Department	Job Class Name	State	Federal	Reimbursement from other Departments/Fees/Other	NCC	Total
Public Works, Land Use and Environment	TLMA - Counter Services	Office Assistant III	0%	0%	100%	0%	1
Public Works, Land Use and Environment	TLMA - Counter Services	SR LAND USE TECHNICIAN	0%	0%	100%	0%	1
Public Works, Land Use and Environment	TLMA - Planning	ADMIN SVCS ANALYST II	0%	0%	100%	0%	1
Public Works, Land Use and Environment	TLMA - Planning	ARCHAEOLOGIST	0%	0%	100%	0%	1
Public Works, Land Use and Environment	TLMA - Planning	Office Assistant III	0%	0%	100%	0%	1
Public Works, Land Use and Environment	TLMA - Planning	PRINCIPAL PLANNER	0%	0%	100%	0%	1
Public Works, Land Use and Environment	TLMA - Planning	TLMA ADMIN SERVICES MANAGER	0%	0%	100%	0%	2
Public Works, Land Use and Environment	TLMA - Planning	URBAN/REGIONAL PLANNER IV	0%	0%	100%	0%	3
Public Works, Land Use and Environment	TLMA - Surveyor	Engineering Aide	0%	0%	100%	0%	1
Public Works, Land Use and Environment	TLMA - Surveyor	Sr Engineering Tech PLS/PE	0%	0%	100%	0%	2
Public Works, Land Use and Environment	TLMA - Surveyor	Principal Engineering Technician PLS/PE2	0%	0%	100%	0%	3
Public Works, Land Use and Environment	TLMA - Transportation	ACCOUNTANT II	100%	0%	0%	0%	1
Public Works, Land Use and Environment	TLMA - Transportation	ACCOUNTING TECHNICIAN I	100%	0%	0%	0%	1
Public Works, Land Use and Environment	TLMA - Transportation	ACCOUNTING TECHNICIAN II	100%	0%	0%	0%	1
Public Works, Land Use and Environment	TLMA - Transportation	ADMIN SVCS ASST	100%	0%	0%	0%	1
Public Works, Land Use and Environment	TLMA - Transportation	ASSOC CIVIL ENGINEER	100%	0%	0%	0%	2
Public Works, Land Use and Environment	TLMA - Transportation	ASST TRANSPORTATION PLANNER	100%	0%	0%	0%	1
Public Works, Land Use and Environment	TLMA - Transportation	ENGINEERING PROJECT MGR	100%	0%	0%	0%	3
Public Works, Land Use and Environment	TLMA - Transportation	ENGINEERING TECH II	100%	0%	0%	0%	4
Public Works, Land Use and Environment	TLMA - Transportation	EQUIPMENT OPERATOR I	100%	0%	0%	0%	2
Public Works, Land Use and Environment	TLMA - Transportation	EQUIPMENT OPERATOR II	100%	0%	0%	0%	1
Public Works, Land Use and Environment	TLMA - Transportation	JUNIOR ENGINEER	100%	0%	0%	0%	1
Public Works, Land Use and Environment	TLMA - Transportation	MAINTENANCE & CONST WRKR	100%	0%	0%	0%	6
Public Works, Land Use and Environment	TLMA - Transportation	Office Assistant II	100%	0%	0%	0%	1
Public Works, Land Use and Environment	TLMA - Transportation	Office Assistant III	100%	0%	0%	0%	3
Public Works, Land Use and Environment	TLMA - Transportation	PRINCIPAL ENG TECH	100%	0%	0%	0%	2
Public Works, Land Use and Environment	TLMA - Transportation	SR CIVIL ENGINEER	100%	0%	0%	0%	1
Public Works, Land Use and Environment	TLMA - Transportation	SR ENG TECH	100%	0%	0%	0%	1
Public Works, Land Use and Environment	TLMA - Transportation	TRAFFIC CONTROL PAINTER	100%	0%	0%	0%	1
Public Works, Land Use and Environment	TLMA - Transportation	TRAFFIC SIGNAL TECH	100%	0%	0%	0%	1
Public Works, Land Use and Environment	TLMA - Transportation	TRUCK & TRAILER DRIVER	100%	0%	0%	0%	1
Public Works, Land Use and Environment	TLMA - Transportation Equipment	Supv Acct	0%	0%	100%	0%	1
Public Works, Land Use and Environment	Waste Resource Mgmt Dist - Operating	Env Compliance Manager - WRMD	0%	0%	100%	0%	1
Public Works, Land Use and Environment	Department of Environmental Health	ENV HEALTH SPEC III	0%	0%	100%	0%	6



VACANT FUNDED POSITION BY FUNDING SOURCE
(Excludes the Sheriff's Department)

Portfolio	Department	Job Class Name	State	Federal	Reimbursement from other Departments/Fees/Other	NCC	Total
Public Works, Land Use and Environment	Department of Environmental Health	ENV HEALTH SPEC III - DESERT	0%	0%	100%	0%	2
Public Works, Land Use and Environment	Department of Environmental Health	Office Assistant II	0%	0%	100%	0%	1
Public Works, Land Use and Environment	Department of Environmental Health	Office Assistant III	0%	0%	100%	0%	1
RUHS Health and Hospital Services	Correctional Health Systems	Certified Medical Assistant	0%	0%	0%	100%	74
RUHS Health and Hospital Services	Correctional Health Systems	CORRECTIONAL HLTHCARE MED DIR	0%	0%	0%	100%	1
RUHS Health and Hospital Services	Correctional Health Systems	DIR OF NURSING SERVICES	0%	0%	0%	100%	1
RUHS Health and Hospital Services	Correctional Health Systems	IT BUSINESS SYS ANALYST II	0%	0%	0%	100%	1
RUHS Health and Hospital Services	Correctional Health Systems	IT USER SUPPORT TECH II	0%	0%	0%	100%	1
RUHS Health and Hospital Services	Correctional Health Systems	LICENSED VOC NURSE III	0%	0%	0%	100%	19
RUHS Health and Hospital Services	Correctional Health Systems	Medical Assistant	0%	0%	0%	100%	36
RUHS Health and Hospital Services	Correctional Health Systems	MEDICAL UNIT CLERK	0%	0%	0%	100%	4
RUHS Health and Hospital Services	Correctional Health Systems	Nurse Practitioner I - RCRMC	0%	0%	0%	100%	1
RUHS Health and Hospital Services	Correctional Health Systems	NURSE PRACTITIONER III -MC/CHC	0%	0%	0%	100%	2
RUHS Health and Hospital Services	Correctional Health Systems	NURSING ED INSTRUCTOR	0%	0%	0%	100%	1
RUHS Health and Hospital Services	Correctional Health Systems	Office Assistant III	0%	0%	0%	100%	1
RUHS Health and Hospital Services	Correctional Health Systems	PHARMACY TECHNICIAN II	0%	0%	0%	100%	3
RUHS Health and Hospital Services	Correctional Health Systems	REGISTERED NURSE I - MC/CHC	0%	0%	0%	100%	2
RUHS Health and Hospital Services	Correctional Health Systems	SECRETARY II	0%	0%	0%	100%	1
RUHS Health and Hospital Services	Correctional Health Systems	SR INSTITUTIONAL NURSE	0%	0%	0%	100%	2
RUHS Health and Hospital Services	Med Indigent Services Program	ACCOUNTING ASSISTANT I	50%	0%	50%	0%	2
RUHS Health and Hospital Services	Med Indigent Services Program	ACCOUNTING ASSISTANT II	50%	0%	50%	0%	2
RUHS Health and Hospital Services	Med Indigent Services Program	ASST DIR PT ACCESS/PT BUS SVCS	50%	0%	50%	0%	1
RUHS Health and Hospital Services	Med Indigent Services Program	DIR PATIENT ACCESS/PT BUS SVC	50%	0%	50%	0%	1
RUHS Health and Hospital Services	Med Indigent Services Program	ELIGIBILITY SERVICES CLERK	50%	0%	50%	0%	1
RUHS Health and Hospital Services	Med Indigent Services Program	ELIGIBILITY SPECIALIST II	50%	0%	50%	0%	10
RUHS Health and Hospital Services	Med Indigent Services Program	ELIGIBILITY SPECIALIST SUPV I	50%	0%	50%	0%	3
RUHS Health and Hospital Services	Med Indigent Services Program	ELIGIBILITY SPECIALIST SUPV II	50%	0%	50%	0%	2
RUHS Health and Hospital Services	Med Indigent Services Program	Office Assistant II	50%	0%	50%	0%	2
RUHS Health and Hospital Services	Med Indigent Services Program	SR ACCOUNTING ASST	50%	0%	50%	0%	1
RUHS Health and Hospital Services	Mental Health Administration	ACCOUNTANT II	60%	40%	0%	0%	2
RUHS Health and Hospital Services	Mental Health Administration	ACCOUNTING ASSISTANT II	60%	40%	0%	0%	11
RUHS Health and Hospital Services	Mental Health Administration	ACCOUNTING TECHNICIAN I	46%	54%	0%	0%	1
RUHS Health and Hospital Services	Mental Health Administration	ADMIN SVCS ANALYST II	60%	40%	0%	0%	7
RUHS Health and Hospital Services	Mental Health Administration	ADMIN SVCS SUPV	60%	40%	0%	0%	1
RUHS Health and Hospital Services	Mental Health Administration	BEHAVIORL HLTH SVCS SPV-LP	46%	54%	0%	0%	1
RUHS Health and Hospital Services	Mental Health Administration	BEHAVIORL HLTH SVCS SPV-LP	60%	40%	0%	0%	1
RUHS Health and Hospital Services	Mental Health Administration	BUSINESS PROCESS ANALYST I	60%	40%	0%	0%	1
RUHS Health and Hospital Services	Mental Health Administration	BUSINESS PROCESS ANALYST II	60%	40%	0%	0%	7
RUHS Health and Hospital Services	Mental Health Administration	CLINICAL THERAPIST II	60%	40%	0%	0%	5
RUHS Health and Hospital Services	Mental Health Administration	DEP DIR, MENTAL HEALTH SVCS	100%	0%	0%	0%	1
RUHS Health and Hospital Services	Mental Health Administration	INSURANCE BILLING CLERK	60%	40%	0%	0%	2
RUHS Health and Hospital Services	Mental Health Administration	IT SUPV USER SUPPORT TECH	60%	40%	0%	0%	1
RUHS Health and Hospital Services	Mental Health Administration	IT SYSTEMS ADMINISTRATOR III	60%	40%	0%	0%	1
RUHS Health and Hospital Services	Mental Health Administration	IT USER SUPPORT TECH II	60%	40%	0%	0%	2
RUHS Health and Hospital Services	Mental Health Administration	IT USER SUPPORT TECH III	60%	40%	0%	0%	1
RUHS Health and Hospital Services	Mental Health Administration	LICENSED VOC NURSE II	60%	40%	0%	0%	1
RUHS Health and Hospital Services	Mental Health Administration	M.H. SERVICES PROGRAM MGR	46%	54%	0%	0%	1
RUHS Health and Hospital Services	Mental Health Administration	M.H. SERVICES PROGRAM MGR	60%	40%	0%	0%	2
RUHS Health and Hospital Services	Mental Health Administration	Office Assistant II	60%	40%	0%	0%	12
RUHS Health and Hospital Services	Mental Health Administration	Office Assistant III	60%	40%	0%	0%	1
RUHS Health and Hospital Services	Mental Health Administration	REGISTERED NURSE IV	60%	40%	0%	0%	3
RUHS Health and Hospital Services	Mental Health Administration	RESEARCH ANALYST	60%	40%	0%	0%	1
RUHS Health and Hospital Services	Mental Health Administration	RESEARCH SPECIALIST I	46%	54%	0%	0%	1
RUHS Health and Hospital Services	Mental Health Administration	RESEARCH SPECIALIST I	60%	40%	0%	0%	3
RUHS Health and Hospital Services	Mental Health Administration	SOCIAL SERVICE PLANNER	100%	0%	0%	0%	1
RUHS Health and Hospital Services	Mental Health Administration	SR ACCOUNTANT	60%	40%	0%	0%	2
RUHS Health and Hospital Services	Mental Health Administration	SR ACCOUNTING ASST	60%	40%	0%	0%	1
RUHS Health and Hospital Services	Mental Health Administration	SR ADMINISTRATIVE SVCS ANALYST	60%	40%	0%	0%	3
RUHS Health and Hospital Services	Mental Health Administration	SR MENTAL HEALTH PEER SPEC	60%	40%	0%	0%	1
RUHS Health and Hospital Services	Mental Health Administration	STAFF PSYCHIATRIST IV	50%	50%	0%	0%	1
RUHS Health and Hospital Services	Mental Health Administration	STAFF PSYCHIATRIST IV	60%	40%	0%	0%	1
RUHS Health and Hospital Services	Mental Health Administration	Stock Clerk	60%	40%	0%	0%	1
RUHS Health and Hospital Services	Mental Health Administration	SUPV OFFICE ASSISTANT I	60%	40%	0%	0%	1
RUHS Health and Hospital Services	Mental Health Administration	SUPV OFFICE ASSISTANT II	60%	40%	0%	0%	1
RUHS Health and Hospital Services	Mental Health Administration	VOLUNTEER SVCS COORDINATOR	60%	40%	0%	0%	1



VACANT FUNDED POSITION BY FUNDING SOURCE
(Excludes the Sheriff's Department)

Portfolio	Department	Job Class Name	State	Federal	Reimbursement from other Departments/Fees/Other	NCC	Total
RUHS Health and Hospital Services	Mental Health Detention	BEHAVIORAL HLTH SPECIALIST II	0%	0%	0%	100%	5
RUHS Health and Hospital Services	Mental Health Detention	BEHAVIORAL HLTH SPECIALIST III	0%	0%	0%	100%	6
RUHS Health and Hospital Services	Mental Health Detention	BEHAVIORAL HLTH SVCS SUPV	0%	0%	0%	100%	1
RUHS Health and Hospital Services	Mental Health Detention	BEHAVIORAL HLTH SVCS SUPV-DET	0%	0%	0%	100%	2
RUHS Health and Hospital Services	Mental Health Detention	Office Assistant II	0%	0%	0%	100%	3
RUHS Health and Hospital Services	Mental Health Detention	RECREATION THERAPIST	0%	0%	0%	100%	1
RUHS Health and Hospital Services	Mental Health Detention	STAFF PSYCHIATRIST II	0%	0%	0%	100%	1
RUHS Health and Hospital Services	Mental Health Substance Abuse	BEHAVIORAL HLTH SPECIALIST III	11%	89%	0%	0%	12
RUHS Health and Hospital Services	Mental Health Substance Abuse	CLINICAL THERAPIST II	11%	89%	0%	0%	2
RUHS Health and Hospital Services	Mental Health Substance Abuse	Community Services Assistant	11%	89%	0%	0%	1
RUHS Health and Hospital Services	Mental Health Substance Abuse	M.H. PEER SPECIALIST	11%	89%	0%	0%	1
RUHS Health and Hospital Services	Mental Health Substance Abuse	M.H. PEER SPECIALIST	100%	0%	0%	0%	1
RUHS Health and Hospital Services	Mental Health Substance Abuse	Office Assistant II	11%	89%	0%	0%	3
RUHS Health and Hospital Services	Mental Health Substance Abuse	Office Assistant III	11%	89%	0%	0%	3
RUHS Health and Hospital Services	Mental Health Substance Abuse	PHYSICIAN IV	11%	89%	0%	0%	2
RUHS Health and Hospital Services	Mental Health Substance Abuse	SOCIAL SERVICES ASSISTANT	11%	89%	0%	0%	1
RUHS Health and Hospital Services	Mental Health Substance Abuse	SUPV OFFICE ASSISTANT II	11%	89%	0%	0%	1
RUHS Health and Hospital Services	Mental Health Treatment	ACCOUNTING ASSISTANT II	60%	40%	0%	0%	1
RUHS Health and Hospital Services	Mental Health Treatment	ACCOUNTING ASSISTANT II	100%	0%	0%	0%	2
RUHS Health and Hospital Services	Mental Health Treatment	ADMIN SVCS ANALYST II	60%	40%	0%	0%	1
RUHS Health and Hospital Services	Mental Health Treatment	BEHAVIORAL HLTH SPECIALIST II	29%	71%	0%	0%	2
RUHS Health and Hospital Services	Mental Health Treatment	BEHAVIORAL HLTH SPECIALIST II	31%	69%	0%	0%	1
RUHS Health and Hospital Services	Mental Health Treatment	BEHAVIORAL HLTH SPECIALIST II	35%	65%	0%	0%	1
RUHS Health and Hospital Services	Mental Health Treatment	BEHAVIORAL HLTH SPECIALIST II	41%	59%	0%	0%	2
RUHS Health and Hospital Services	Mental Health Treatment	BEHAVIORAL HLTH SPECIALIST II	42%	58%	0%	0%	1
RUHS Health and Hospital Services	Mental Health Treatment	BEHAVIORAL HLTH SPECIALIST II	45%	55%	0%	0%	1
RUHS Health and Hospital Services	Mental Health Treatment	BEHAVIORAL HLTH SPECIALIST II	51%	49%	0%	0%	1
RUHS Health and Hospital Services	Mental Health Treatment	BEHAVIORAL HLTH SPECIALIST II	53%	47%	0%	0%	2
RUHS Health and Hospital Services	Mental Health Treatment	BEHAVIORAL HLTH SPECIALIST II	60%	40%	0%	0%	6
RUHS Health and Hospital Services	Mental Health Treatment	BEHAVIORAL HLTH SPECIALIST II	62%	38%	0%	0%	2
RUHS Health and Hospital Services	Mental Health Treatment	BEHAVIORAL HLTH SPECIALIST II	63%	37%	0%	0%	8
RUHS Health and Hospital Services	Mental Health Treatment	BEHAVIORAL HLTH SPECIALIST II	66%	34%	0%	0%	3
RUHS Health and Hospital Services	Mental Health Treatment	BEHAVIORAL HLTH SPECIALIST II	70%	30%	0%	0%	1
RUHS Health and Hospital Services	Mental Health Treatment	BEHAVIORAL HLTH SPECIALIST II	72%	28%	0%	0%	2
RUHS Health and Hospital Services	Mental Health Treatment	BEHAVIORAL HLTH SPECIALIST II	77%	23%	0%	0%	1
RUHS Health and Hospital Services	Mental Health Treatment	BEHAVIORAL HLTH SPECIALIST II	80%	20%	0%	0%	1
RUHS Health and Hospital Services	Mental Health Treatment	BEHAVIORAL HLTH SPECIALIST II	100%	0%	0%	0%	7
RUHS Health and Hospital Services	Mental Health Treatment	BEHAVIORAL HLTH SPECIALIST III	16%	0%	84%	0%	2
RUHS Health and Hospital Services	Mental Health Treatment	BEHAVIORAL HLTH SPECIALIST III	60%	40%	0%	0%	1
RUHS Health and Hospital Services	Mental Health Treatment	BEHAVIORAL HLTH SPECIALIST III	68%	32%	0%	0%	1
RUHS Health and Hospital Services	Mental Health Treatment	BEHAVIORAL HLTH SPECIALIST III	79%	21%	0%	0%	1
RUHS Health and Hospital Services	Mental Health Treatment	BEHAVIORAL HLTH SVCS SPV-LP	28%	72%	0%	0%	1
RUHS Health and Hospital Services	Mental Health Treatment	BEHAVIORAL HLTH SVCS SPV-LP	31%	69%	0%	0%	1
RUHS Health and Hospital Services	Mental Health Treatment	BEHAVIORAL HLTH SVCS SPV-LP	45%	55%	0%	0%	1
RUHS Health and Hospital Services	Mental Health Treatment	BEHAVIORAL HLTH SVCS SPV-LP	50%	50%	0%	0%	1
RUHS Health and Hospital Services	Mental Health Treatment	BEHAVIORAL HLTH SVCS SPV-LP	60%	40%	0%	0%	2
RUHS Health and Hospital Services	Mental Health Treatment	BEHAVIORAL HLTH SVCS SPV-LP	63%	37%	0%	0%	3
RUHS Health and Hospital Services	Mental Health Treatment	CLINICAL THERAPIST II	16%	0%	84%	0%	2
RUHS Health and Hospital Services	Mental Health Treatment	CLINICAL THERAPIST II	17%	83%	0%	0%	3
RUHS Health and Hospital Services	Mental Health Treatment	CLINICAL THERAPIST II	29%	71%	0%	0%	3
RUHS Health and Hospital Services	Mental Health Treatment	CLINICAL THERAPIST II	31%	69%	0%	0%	1
RUHS Health and Hospital Services	Mental Health Treatment	CLINICAL THERAPIST II	35%	65%	0%	0%	5
RUHS Health and Hospital Services	Mental Health Treatment	CLINICAL THERAPIST II	36%	64%	0%	0%	6
RUHS Health and Hospital Services	Mental Health Treatment	CLINICAL THERAPIST II	40%	60%	0%	0%	2
RUHS Health and Hospital Services	Mental Health Treatment	CLINICAL THERAPIST II	41%	59%	0%	0%	1
RUHS Health and Hospital Services	Mental Health Treatment	CLINICAL THERAPIST II	42%	58%	0%	0%	7
RUHS Health and Hospital Services	Mental Health Treatment	CLINICAL THERAPIST II	43%	57%	0%	0%	5
RUHS Health and Hospital Services	Mental Health Treatment	CLINICAL THERAPIST II	44%	56%	0%	0%	1
RUHS Health and Hospital Services	Mental Health Treatment	CLINICAL THERAPIST II	45%	55%	0%	0%	3
RUHS Health and Hospital Services	Mental Health Treatment	CLINICAL THERAPIST II	46%	54%	0%	0%	2
RUHS Health and Hospital Services	Mental Health Treatment	CLINICAL THERAPIST II	47%	53%	0%	0%	2
RUHS Health and Hospital Services	Mental Health Treatment	CLINICAL THERAPIST II	48%	52%	0%	0%	1
RUHS Health and Hospital Services	Mental Health Treatment	CLINICAL THERAPIST II	50%	50%	0%	0%	1
RUHS Health and Hospital Services	Mental Health Treatment	CLINICAL THERAPIST II	54%	46%	0%	0%	1
RUHS Health and Hospital Services	Mental Health Treatment	CLINICAL THERAPIST II	56%	44%	0%	0%	2
RUHS Health and Hospital Services	Mental Health Treatment	CLINICAL THERAPIST II	58%	42%	0%	0%	1
RUHS Health and Hospital Services	Mental Health Treatment	CLINICAL THERAPIST II	60%	40%	0%	0%	5
RUHS Health and Hospital Services	Mental Health Treatment	CLINICAL THERAPIST II	66%	34%	0%	0%	1



VACANT FUNDED POSITION BY FUNDING SOURCE
(Excludes the Sheriff's Department)

Portfolio	Department	Job Class Name	State	Federal	Reimbursement from other Departments/Fees/Other	NCC	Total
RUHS Health and Hospital Services	Mental Health Treatment	CLINICAL THERAPIST II	68%	32%	0%	0%	3
RUHS Health and Hospital Services	Mental Health Treatment	CLINICAL THERAPIST II	72%	28%	0%	0%	1
RUHS Health and Hospital Services	Mental Health Treatment	CLINICAL THERAPIST II	73%	27%	0%	0%	1
RUHS Health and Hospital Services	Mental Health Treatment	CLINICAL THERAPIST II	74%	26%	0%	0%	1
RUHS Health and Hospital Services	Mental Health Treatment	CLINICAL THERAPIST II	93%	7%	0%	0%	1
RUHS Health and Hospital Services	Mental Health Treatment	CLINICAL THERAPIST II	100%	0%	0%	0%	5
RUHS Health and Hospital Services	Mental Health Treatment	Community Services Assistant	42%	58%	0%	0%	1
RUHS Health and Hospital Services	Mental Health Treatment	Community Services Assistant	43%	57%	0%	0%	1
RUHS Health and Hospital Services	Mental Health Treatment	Community Services Assistant	54%	46%	0%	0%	1
RUHS Health and Hospital Services	Mental Health Treatment	Community Services Assistant	63%	37%	0%	0%	2
RUHS Health and Hospital Services	Mental Health Treatment	Community Services Assistant	64%	36%	0%	0%	1
RUHS Health and Hospital Services	Mental Health Treatment	Community Services Assistant	65%	35%	0%	0%	1
RUHS Health and Hospital Services	Mental Health Treatment	Community Services Assistant	66%	34%	0%	0%	3
RUHS Health and Hospital Services	Mental Health Treatment	Community Services Assistant	79%	21%	0%	0%	1
RUHS Health and Hospital Services	Mental Health Treatment	Community Services Assistant	100%	0%	0%	0%	2
RUHS Health and Hospital Services	Mental Health Treatment	EMPLOYMENT SVCS COUNSELOR II	63%	37%	0%	0%	1
RUHS Health and Hospital Services	Mental Health Treatment	LICENSED PSYCHIATRIC TECH	36%	64%	0%	0%	1
RUHS Health and Hospital Services	Mental Health Treatment	LICENSED PSYCHIATRIC TECH	60%	40%	0%	0%	1
RUHS Health and Hospital Services	Mental Health Treatment	LICENSED PSYCHIATRIC TECH	63%	37%	0%	0%	1
RUHS Health and Hospital Services	Mental Health Treatment	LICENSED VOC NURSE II	31%	69%	0%	0%	1
RUHS Health and Hospital Services	Mental Health Treatment	LICENSED VOC NURSE II	35%	65%	0%	0%	1
RUHS Health and Hospital Services	Mental Health Treatment	LICENSED VOC NURSE II	44%	56%	0%	0%	1
RUHS Health and Hospital Services	Mental Health Treatment	LICENSED VOC NURSE II	45%	55%	0%	0%	1
RUHS Health and Hospital Services	Mental Health Treatment	M.H. PEER POLICY & PLNG SPEC	60%	40%	0%	0%	1
RUHS Health and Hospital Services	Mental Health Treatment	M.H. PEER SPECIALIST	28%	72%	0%	0%	1
RUHS Health and Hospital Services	Mental Health Treatment	M.H. PEER SPECIALIST	29%	71%	0%	0%	2
RUHS Health and Hospital Services	Mental Health Treatment	M.H. PEER SPECIALIST	30%	70%	0%	0%	1
RUHS Health and Hospital Services	Mental Health Treatment	M.H. PEER SPECIALIST	31%	69%	0%	0%	1
RUHS Health and Hospital Services	Mental Health Treatment	M.H. PEER SPECIALIST	32%	68%	0%	0%	1
RUHS Health and Hospital Services	Mental Health Treatment	M.H. PEER SPECIALIST	35%	65%	0%	0%	2
RUHS Health and Hospital Services	Mental Health Treatment	M.H. PEER SPECIALIST	41%	59%	0%	0%	3
RUHS Health and Hospital Services	Mental Health Treatment	M.H. PEER SPECIALIST	44%	56%	0%	0%	4
RUHS Health and Hospital Services	Mental Health Treatment	M.H. PEER SPECIALIST	50%	50%	0%	0%	1
RUHS Health and Hospital Services	Mental Health Treatment	M.H. PEER SPECIALIST	53%	47%	0%	0%	1
RUHS Health and Hospital Services	Mental Health Treatment	M.H. PEER SPECIALIST	55%	45%	0%	0%	2
RUHS Health and Hospital Services	Mental Health Treatment	M.H. PEER SPECIALIST	58%	42%	0%	0%	1
RUHS Health and Hospital Services	Mental Health Treatment	M.H. PEER SPECIALIST	60%	40%	0%	0%	5
RUHS Health and Hospital Services	Mental Health Treatment	M.H. PEER SPECIALIST	62%	38%	0%	0%	1
RUHS Health and Hospital Services	Mental Health Treatment	M.H. PEER SPECIALIST	64%	36%	0%	0%	2
RUHS Health and Hospital Services	Mental Health Treatment	M.H. PEER SPECIALIST	66%	34%	0%	0%	1
RUHS Health and Hospital Services	Mental Health Treatment	M.H. PEER SPECIALIST	68%	32%	0%	0%	2
RUHS Health and Hospital Services	Mental Health Treatment	M.H. PEER SPECIALIST	70%	30%	0%	0%	1
RUHS Health and Hospital Services	Mental Health Treatment	M.H. PEER SPECIALIST	77%	23%	0%	0%	1
RUHS Health and Hospital Services	Mental Health Treatment	M.H. PEER SPECIALIST	100%	0%	0%	0%	1
RUHS Health and Hospital Services	Mental Health Treatment	M.H. SERVICES PROGRAM MGR	35%	65%	0%	0%	1
RUHS Health and Hospital Services	Mental Health Treatment	M.H. SERVICES PROGRAM MGR	100%	0%	0%	0%	1
RUHS Health and Hospital Services	Mental Health Treatment	MEDICAL TRANSCRIPTIONIST II	73%	27%	0%	0%	3
RUHS Health and Hospital Services	Mental Health Treatment	MEDICAL TRANSPORTATION TECH	100%	0%	0%	0%	2
RUHS Health and Hospital Services	Mental Health Treatment	NURSE PRACTITIONER III	73%	27%	0%	0%	1
RUHS Health and Hospital Services	Mental Health Treatment	NURSE PRACTITIONER III-DESERT	29%	71%	0%	0%	1
RUHS Health and Hospital Services	Mental Health Treatment	Office Assistant II	0%	64%	0%	36%	1
RUHS Health and Hospital Services	Mental Health Treatment	Office Assistant II	29%	71%	0%	0%	5
RUHS Health and Hospital Services	Mental Health Treatment	Office Assistant II	30%	70%	0%	0%	1
RUHS Health and Hospital Services	Mental Health Treatment	Office Assistant II	32%	68%	0%	0%	1
RUHS Health and Hospital Services	Mental Health Treatment	Office Assistant II	34%	66%	0%	0%	1
RUHS Health and Hospital Services	Mental Health Treatment	Office Assistant II	44%	56%	0%	0%	2
RUHS Health and Hospital Services	Mental Health Treatment	Office Assistant II	45%	55%	0%	0%	1
RUHS Health and Hospital Services	Mental Health Treatment	Office Assistant II	47%	53%	0%	0%	1
RUHS Health and Hospital Services	Mental Health Treatment	Office Assistant II	50%	50%	0%	0%	1
RUHS Health and Hospital Services	Mental Health Treatment	Office Assistant II	60%	40%	0%	0%	1
RUHS Health and Hospital Services	Mental Health Treatment	Office Assistant II	63%	37%	0%	0%	1
RUHS Health and Hospital Services	Mental Health Treatment	Office Assistant II	65%	35%	0%	0%	1
RUHS Health and Hospital Services	Mental Health Treatment	Office Assistant II	66%	34%	0%	0%	1
RUHS Health and Hospital Services	Mental Health Treatment	Office Assistant II	72%	28%	0%	0%	1
RUHS Health and Hospital Services	Mental Health Treatment	Office Assistant II	73%	27%	0%	0%	1
RUHS Health and Hospital Services	Mental Health Treatment	Office Assistant II	100%	0%	0%	0%	2
RUHS Health and Hospital Services	Mental Health Treatment	Office Assistant III	29%	71%	0%	0%	1
RUHS Health and Hospital Services	Mental Health Treatment	Office Assistant III	31%	69%	0%	0%	1



VACANT FUNDED POSITION BY FUNDING SOURCE
(Excludes the Sheriff's Department)

Portfolio	Department	Job Class Name	State	Federal	Reimbursement from other Departments/Fees/Other	NCC	Total
RUHS Health and Hospital Services	Mental Health Treatment	Office Assistant III	32%	68%	0%	0%	1
RUHS Health and Hospital Services	Mental Health Treatment	Office Assistant III	37%	63%	0%	0%	1
RUHS Health and Hospital Services	Mental Health Treatment	Office Assistant III	43%	57%	0%	0%	1
RUHS Health and Hospital Services	Mental Health Treatment	Office Assistant III	54%	46%	0%	0%	2
RUHS Health and Hospital Services	Mental Health Treatment	Office Assistant III	60%	40%	0%	0%	1
RUHS Health and Hospital Services	Mental Health Treatment	Office Assistant III	64%	36%	0%	0%	2
RUHS Health and Hospital Services	Mental Health Treatment	Office Assistant III	73%	27%	0%	0%	1
RUHS Health and Hospital Services	Mental Health Treatment	Office Assistant III	80%	20%	0%	0%	1
RUHS Health and Hospital Services	Mental Health Treatment	Office Assistant III	100%	0%	0%	0%	1
RUHS Health and Hospital Services	Mental Health Treatment	PHYSICIAN ASSISTANT I	48%	52%	0%	0%	1
RUHS Health and Hospital Services	Mental Health Treatment	PHYSICIAN ASSISTANT II	61%	39%	0%	0%	1
RUHS Health and Hospital Services	Mental Health Treatment	PHYSICIAN ASSISTANT III	36%	64%	0%	0%	1
RUHS Health and Hospital Services	Mental Health Treatment	PHYSICIAN ASSISTANT III	48%	52%	0%	0%	2
RUHS Health and Hospital Services	Mental Health Treatment	PHYSICIAN IV	42%	58%	0%	0%	1
RUHS Health and Hospital Services	Mental Health Treatment	REGISTERED NURSE IV	43%	57%	0%	0%	1
RUHS Health and Hospital Services	Mental Health Treatment	SECRETARY I	60%	40%	0%	0%	1
RUHS Health and Hospital Services	Mental Health Treatment	SECRETARY II	100%	0%	0%	0%	1
RUHS Health and Hospital Services	Mental Health Treatment	SOCIAL SERVICE PLANNER	60%	40%	0%	0%	2
RUHS Health and Hospital Services	Mental Health Treatment	SR CLINICAL PSYCHOLOGIST	29%	71%	0%	0%	1
RUHS Health and Hospital Services	Mental Health Treatment	SR CLINICAL THERAPIST	29%	71%	0%	0%	1
RUHS Health and Hospital Services	Mental Health Treatment	SR CLINICAL THERAPIST	32%	68%	0%	0%	1
RUHS Health and Hospital Services	Mental Health Treatment	SR CLINICAL THERAPIST	35%	65%	0%	0%	2
RUHS Health and Hospital Services	Mental Health Treatment	SR CLINICAL THERAPIST	38%	62%	0%	0%	1
RUHS Health and Hospital Services	Mental Health Treatment	SR CLINICAL THERAPIST	44%	56%	0%	0%	1
RUHS Health and Hospital Services	Mental Health Treatment	SR CLINICAL THERAPIST	63%	37%	0%	0%	1
RUHS Health and Hospital Services	Mental Health Treatment	SR CLINICAL THERAPIST	65%	35%	0%	0%	1
RUHS Health and Hospital Services	Mental Health Treatment	SR CLINICAL THERAPIST	100%	0%	0%	0%	1
RUHS Health and Hospital Services	Mental Health Treatment	SR MENTAL HEALTH PEER SPEC	35%	65%	0%	0%	1
RUHS Health and Hospital Services	Mental Health Treatment	SR MENTAL HEALTH PEER SPEC	60%	40%	0%	0%	2
RUHS Health and Hospital Services	Mental Health Treatment	STAFF PSYCHIATRIST IV	29%	71%	0%	0%	8
RUHS Health and Hospital Services	Mental Health Treatment	STAFF PSYCHIATRIST IV	30%	70%	0%	0%	3
RUHS Health and Hospital Services	Mental Health Treatment	STAFF PSYCHIATRIST IV	34%	66%	0%	0%	1
RUHS Health and Hospital Services	Mental Health Treatment	STAFF PSYCHIATRIST IV	36%	64%	0%	0%	1
RUHS Health and Hospital Services	Mental Health Treatment	STAFF PSYCHIATRIST IV	43%	57%	0%	0%	2
RUHS Health and Hospital Services	Mental Health Treatment	STAFF PSYCHIATRIST IV	44%	56%	0%	0%	2
RUHS Health and Hospital Services	Mental Health Treatment	STAFF PSYCHIATRIST IV	45%	55%	0%	0%	3
RUHS Health and Hospital Services	Mental Health Treatment	STAFF PSYCHIATRIST IV	46%	54%	0%	0%	1
RUHS Health and Hospital Services	Mental Health Treatment	STAFF PSYCHIATRIST IV	48%	52%	0%	0%	7
RUHS Health and Hospital Services	Mental Health Treatment	STAFF PSYCHIATRIST IV	53%	47%	0%	0%	2
RUHS Health and Hospital Services	Mental Health Treatment	STAFF PSYCHIATRIST IV	63%	37%	0%	0%	3
RUHS Health and Hospital Services	Mental Health Treatment	STAFF PSYCHIATRIST IV	64%	36%	0%	0%	1
RUHS Health and Hospital Services	Mental Health Treatment	STAFF PSYCHIATRIST IV	65%	35%	0%	0%	3
RUHS Health and Hospital Services	Mental Health Treatment	STAFF PSYCHIATRIST IV	73%	27%	0%	0%	5
RUHS Health and Hospital Services	Mental Health Treatment	STAFF PSYCHIATRIST IV	87%	13%	0%	0%	1
RUHS Health and Hospital Services	Mental Health Treatment	STAFF PSYCHIATRIST IV	100%	0%	0%	0%	1
RUHS Health and Hospital Services	MH-Public Guardian	ACCOUNTING ASSISTANT II	0%	100%	0%	0%	1
RUHS Health and Hospital Services	MH-Public Guardian	Clinical Therapist I	0%	100%	0%	0%	1
RUHS Health and Hospital Services	MH-Public Guardian	DEP PUBLIC GUARDIAN	0%	0%	0%	100%	1
RUHS Health and Hospital Services	MH-Public Guardian	Office Assistant II	0%	50%	0%	50%	2
RUHS Health and Hospital Services	MH-Public Guardian	PUBLIC GUARDIAN INVESTIGATOR	0%	100%	0%	0%	2
RUHS Health and Hospital Services	RUHS - Community Health Clinics	ADMISSIONS & COLLECTIONS CLERK	50%	50%	0%	0%	12
RUHS Health and Hospital Services	RUHS - Community Health Clinics	Asst Medical Program Director I	50%	50%	0%	0%	1
RUHS Health and Hospital Services	RUHS - Community Health Clinics	Asst Medical Program Director II	50%	50%	0%	0%	3
RUHS Health and Hospital Services	RUHS - Community Health Clinics	Behavioral Health Specialist II	50%	50%	0%	0%	1
RUHS Health and Hospital Services	RUHS - Community Health Clinics	Certified Medical Record Coder	50%	50%	0%	0%	1
RUHS Health and Hospital Services	RUHS - Community Health Clinics	Clinical Pharmacist	50%	50%	0%	0%	1
RUHS Health and Hospital Services	RUHS - Community Health Clinics	CLINICAL THERAPIST II	50%	50%	0%	0%	11
RUHS Health and Hospital Services	RUHS - Community Health Clinics	Community Dental Hygienist	50%	50%	0%	0%	1
RUHS Health and Hospital Services	RUHS - Community Health Clinics	Community Services Assistant	50%	50%	0%	0%	5
RUHS Health and Hospital Services	RUHS - Community Health Clinics	Dental Assistant	50%	50%	0%	0%	6
RUHS Health and Hospital Services	RUHS - Community Health Clinics	DENTIST	50%	50%	0%	0%	3
RUHS Health and Hospital Services	RUHS - Community Health Clinics	Dietitian II	50%	50%	0%	0%	1
RUHS Health and Hospital Services	RUHS - Community Health Clinics	Director of Professional Education	50%	50%	0%	0%	1
RUHS Health and Hospital Services	RUHS - Community Health Clinics	Healthcare Administrative Manager	50%	50%	0%	0%	1
RUHS Health and Hospital Services	RUHS - Community Health Clinics	Healthcare Assistant Administrative Mgr	50%	50%	0%	0%	1
RUHS Health and Hospital Services	RUHS - Community Health Clinics	HOUSEKEEPER	50%	50%	0%	0%	2
RUHS Health and Hospital Services	RUHS - Community Health Clinics	LICENSED VOC NURSE II	50%	50%	0%	0%	27
RUHS Health and Hospital Services	RUHS - Community Health Clinics	Medical Assistant	50%	50%	0%	0%	20



VACANT FUNDED POSITION BY FUNDING SOURCE
(Excludes the Sheriff's Department)

Portfolio	Department	Job Class Name	State	Federal	Reimbursement from other Departments/Fees/Other	NCC	Total
RUHS Health and Hospital Services	RUHS - Community Health Clinics	MEDICAL PROGRAM DIRECTOR	50%	50%	0%	0%	4
RUHS Health and Hospital Services	RUHS - Community Health Clinics	Nurse Coordinator	50%	50%	0%	0%	9
RUHS Health and Hospital Services	RUHS - Community Health Clinics	Nurse Manager	50%	50%	0%	0%	1
RUHS Health and Hospital Services	RUHS - Community Health Clinics	NURSE PRACTITIONER III	50%	50%	0%	0%	2
RUHS Health and Hospital Services	RUHS - Community Health Clinics	NUTRITIONIST	50%	50%	0%	0%	2
RUHS Health and Hospital Services	RUHS - Community Health Clinics	Office Assistant II	50%	50%	0%	0%	6
RUHS Health and Hospital Services	RUHS - Community Health Clinics	Office Assistant III	50%	50%	0%	0%	2
RUHS Health and Hospital Services	RUHS - Community Health Clinics	ORTHOPEDIC TECHNICIAN	50%	50%	0%	0%	1
RUHS Health and Hospital Services	RUHS - Community Health Clinics	Patient Services Coordinator	50%	50%	0%	0%	3
RUHS Health and Hospital Services	RUHS - Community Health Clinics	PHARMACY TECHNICIAN II	50%	50%	0%	0%	1
RUHS Health and Hospital Services	RUHS - Community Health Clinics	PHYSICIAN ASSISTANT II	50%	50%	0%	0%	1
RUHS Health and Hospital Services	RUHS - Community Health Clinics	PHYSICIAN ASSISTANT III	50%	50%	0%	0%	2
RUHS Health and Hospital Services	RUHS - Community Health Clinics	Physician Assistant III - Desert	50%	50%	0%	0%	1
RUHS Health and Hospital Services	RUHS - Community Health Clinics	PHYSICIAN IV	50%	50%	0%	0%	6
RUHS Health and Hospital Services	RUHS - Community Health Clinics	PHYSICIAN IV - DESERT	50%	50%	0%	0%	2
RUHS Health and Hospital Services	RUHS - Community Health Clinics	Radiologic Specialist II	50%	50%	0%	0%	1
RUHS Health and Hospital Services	RUHS - Community Health Clinics	REGISTERED NURSE III - MC/CHC	50%	50%	0%	0%	15
RUHS Health and Hospital Services	RUHS - Community Health Clinics	Revenue & Recovery Supervisor II	50%	50%	0%	0%	1
RUHS Health and Hospital Services	RUHS - Community Health Clinics	SECRETARY I	50%	50%	0%	0%	1
RUHS Health and Hospital Services	RUHS - Community Health Clinics	SECRETARY II	50%	50%	0%	0%	1
RUHS Health and Hospital Services	RUHS - Community Health Clinics	STAFF PSYCHIATRIST IV	50%	50%	0%	0%	12
RUHS Health and Hospital Services	RUHS - Medical Center	ACCOUNTING ASSISTANT II	0%	0%	100%	0%	4
RUHS Health and Hospital Services	RUHS - Medical Center	ACCOUNTING TECHNICIAN I	0%	0%	100%	0%	2
RUHS Health and Hospital Services	RUHS - Medical Center	ACCOUNTING TECHNICIAN II	0%	0%	100%	0%	1
RUHS Health and Hospital Services	RUHS - Medical Center	ADMINISTRATIVE SERVICES ANALYST II	0%	0%	100%	0%	8
RUHS Health and Hospital Services	RUHS - Medical Center	ADMINISTRATIVE SERVICES ASSISTANT	0%	0%	100%	0%	2
RUHS Health and Hospital Services	RUHS - Medical Center	Administrative Services Manager I	0%	0%	100%	0%	3
RUHS Health and Hospital Services	RUHS - Medical Center	Administrative Services Manager II	0%	0%	100%	0%	6
RUHS Health and Hospital Services	RUHS - Medical Center	Administrative Services Manager III	0%	0%	100%	0%	1
RUHS Health and Hospital Services	RUHS - Medical Center	Administrative Services Officer	0%	0%	100%	0%	2
RUHS Health and Hospital Services	RUHS - Medical Center	Administrative Services Supervisor	0%	0%	100%	0%	5
RUHS Health and Hospital Services	RUHS - Medical Center	ADMISSIONS & COLLECTIONS CLERK	0%	0%	100%	0%	15
RUHS Health and Hospital Services	RUHS - Medical Center	Anesthesiology Technician	0%	0%	100%	0%	2
RUHS Health and Hospital Services	RUHS - Medical Center	Asst Medical Program Director II	0%	0%	100%	0%	17
RUHS Health and Hospital Services	RUHS - Medical Center	Asst Nurse Manager - MC/CHC	0%	0%	100%	0%	20
RUHS Health and Hospital Services	RUHS - Medical Center	Behavioral Health Services Supervisor	0%	0%	100%	0%	2
RUHS Health and Hospital Services	RUHS - Medical Center	Behavioral Health Specialist II	0%	0%	100%	0%	10
RUHS Health and Hospital Services	RUHS - Medical Center	Budget/Reimbursement Analyst	0%	0%	100%	0%	1
RUHS Health and Hospital Services	RUHS - Medical Center	Building Maintenance Supervisor	0%	0%	100%	0%	1
RUHS Health and Hospital Services	RUHS - Medical Center	Business Process Manager	0%	0%	100%	0%	1
RUHS Health and Hospital Services	RUHS - Medical Center	Buyer Assistant	0%	0%	100%	0%	3
RUHS Health and Hospital Services	RUHS - Medical Center	Cardiac Sonographer	0%	0%	100%	0%	1
RUHS Health and Hospital Services	RUHS - Medical Center	Certified Medical Record Coder	0%	0%	100%	0%	1
RUHS Health and Hospital Services	RUHS - Medical Center	Chaplain	0%	0%	100%	0%	1
RUHS Health and Hospital Services	RUHS - Medical Center	Chief Clinical Integration Officer	0%	0%	100%	0%	1
RUHS Health and Hospital Services	RUHS - Medical Center	Chief Clinical Lab Scientist	0%	0%	100%	0%	1
RUHS Health and Hospital Services	RUHS - Medical Center	Chief of Medical Specialty	0%	0%	100%	0%	4
RUHS Health and Hospital Services	RUHS - Medical Center	Clinical Admin of Nursing Services I	0%	0%	100%	0%	1
RUHS Health and Hospital Services	RUHS - Medical Center	Clinical Admin of Nursing Services II	0%	0%	100%	0%	1
RUHS Health and Hospital Services	RUHS - Medical Center	Clinical Integration Supervisor	0%	0%	100%	0%	1
RUHS Health and Hospital Services	RUHS - Medical Center	Clinical Lab Scientist II	0%	0%	100%	0%	5
RUHS Health and Hospital Services	RUHS - Medical Center	Clinical Nurse Specialist	0%	0%	100%	0%	1
RUHS Health and Hospital Services	RUHS - Medical Center	Clinical Pharmacist	0%	0%	100%	0%	4
RUHS Health and Hospital Services	RUHS - Medical Center	CLINICAL THERAPIST II	0%	0%	100%	0%	9
RUHS Health and Hospital Services	RUHS - Medical Center	Community Relations Coordinator	0%	0%	100%	0%	1
RUHS Health and Hospital Services	RUHS - Medical Center	Community Relations Manager	0%	0%	100%	0%	1
RUHS Health and Hospital Services	RUHS - Medical Center	Cooks Assistant	0%	0%	100%	0%	3
RUHS Health and Hospital Services	RUHS - Medical Center	Decision Support System Analyst	0%	0%	100%	0%	2
RUHS Health and Hospital Services	RUHS - Medical Center	Decision Support System Manager	0%	0%	100%	0%	1
RUHS Health and Hospital Services	RUHS - Medical Center	Diagnostic Services Supervisor	0%	0%	100%	0%	1
RUHS Health and Hospital Services	RUHS - Medical Center	Dietetic Technician	0%	0%	100%	0%	2
RUHS Health and Hospital Services	RUHS - Medical Center	Dietitian II	0%	0%	100%	0%	1
RUHS Health and Hospital Services	RUHS - Medical Center	Dir of Operating Room Services	0%	0%	100%	0%	1
RUHS Health and Hospital Services	RUHS - Medical Center	Director of Development	0%	0%	100%	0%	1
RUHS Health and Hospital Services	RUHS - Medical Center	Director of Health Information	0%	0%	100%	0%	1
RUHS Health and Hospital Services	RUHS - Medical Center	Director of Nursing Services	0%	0%	100%	0%	7
RUHS Health and Hospital Services	RUHS - Medical Center	Electrocardiograph Technician	0%	0%	100%	0%	1
RUHS Health and Hospital Services	RUHS - Medical Center	Electroencephalographic Tech, Reg	0%	0%	100%	0%	2



VACANT FUNDED POSITION BY FUNDING SOURCE
(Excludes the Sheriff's Department)

Portfolio	Department	Job Class Name	State	Federal	Reimbursement from other Departments/Fees/Other	NCC	Total
RUHS Health and Hospital Services	RUHS - Medical Center	ELIGIBILITY SERVICES CLERK	0%	0%	100%	0%	1
RUHS Health and Hospital Services	RUHS - Medical Center	Emergency Department Technician	0%	0%	100%	0%	1
RUHS Health and Hospital Services	RUHS - Medical Center	Exec Dir, RUHS Ambulatory Care Services	0%	0%	100%	0%	1
RUHS Health and Hospital Services	RUHS - Medical Center	EXECUTIVE ASSISTANT II	0%	0%	100%	0%	2
RUHS Health and Hospital Services	RUHS - Medical Center	Executive Director, Revenue Cycle	0%	0%	100%	0%	1
RUHS Health and Hospital Services	RUHS - Medical Center	Executive Director, RUHS	0%	0%	100%	0%	1
RUHS Health and Hospital Services	RUHS - Medical Center	FISCAL MANAGER	0%	0%	100%	0%	1
RUHS Health and Hospital Services	RUHS - Medical Center	Food Service Worker	0%	0%	100%	0%	1
RUHS Health and Hospital Services	RUHS - Medical Center	GARDENER	0%	0%	100%	0%	1
RUHS Health and Hospital Services	RUHS - Medical Center	Health System Nurse Case Manager II	0%	0%	100%	0%	6
RUHS Health and Hospital Services	RUHS - Medical Center	Healthcare Assistant Administrative Mgr	0%	0%	100%	0%	1
RUHS Health and Hospital Services	RUHS - Medical Center	Hospital Admissions Supervisor	0%	0%	100%	0%	1
RUHS Health and Hospital Services	RUHS - Medical Center	Hospital Budget Reimbursement Officer	0%	0%	100%	0%	1
RUHS Health and Hospital Services	RUHS - Medical Center	Hospital Environmental Services Supv	0%	0%	100%	0%	2
RUHS Health and Hospital Services	RUHS - Medical Center	Hospital Supply Technician	0%	0%	100%	0%	5
RUHS Health and Hospital Services	RUHS - Medical Center	HOUSEKEEPER	0%	0%	100%	0%	15
RUHS Health and Hospital Services	RUHS - Medical Center	Infection Preventionist I	0%	0%	100%	0%	1
RUHS Health and Hospital Services	RUHS - Medical Center	Infection Preventionist III	0%	0%	100%	0%	1
RUHS Health and Hospital Services	RUHS - Medical Center	Information Security Analyst III	0%	0%	100%	0%	1
RUHS Health and Hospital Services	RUHS - Medical Center	INSURANCE BILLING CLERK	0%	0%	100%	0%	4
RUHS Health and Hospital Services	RUHS - Medical Center	Insurance Billing Supervisor II	0%	0%	100%	0%	1
RUHS Health and Hospital Services	RUHS - Medical Center	IT Business Systems Analyst II	0%	0%	100%	0%	4
RUHS Health and Hospital Services	RUHS - Medical Center	IT Business Systems Analyst III	0%	0%	100%	0%	1
RUHS Health and Hospital Services	RUHS - Medical Center	IT Communications Analyst III	0%	0%	100%	0%	3
RUHS Health and Hospital Services	RUHS - Medical Center	IT Manager I	0%	0%	100%	0%	1
RUHS Health and Hospital Services	RUHS - Medical Center	IT Manager II	0%	0%	100%	0%	2
RUHS Health and Hospital Services	RUHS - Medical Center	IT Manager III	0%	0%	100%	0%	1
RUHS Health and Hospital Services	RUHS - Medical Center	IT Supv Business Systems Analyst	0%	0%	100%	0%	1
RUHS Health and Hospital Services	RUHS - Medical Center	IT Systems Administrator II	0%	0%	100%	0%	1
RUHS Health and Hospital Services	RUHS - Medical Center	IT User Support Technician II	0%	0%	100%	0%	1
RUHS Health and Hospital Services	RUHS - Medical Center	IT User Support Technician III	0%	0%	100%	0%	2
RUHS Health and Hospital Services	RUHS - Medical Center	Laundry Supervisor	0%	0%	100%	0%	1
RUHS Health and Hospital Services	RUHS - Medical Center	Laundry Worker	0%	0%	100%	0%	1
RUHS Health and Hospital Services	RUHS - Medical Center	Lead Anesthesiology Technician	0%	0%	100%	0%	1
RUHS Health and Hospital Services	RUHS - Medical Center	Lead Housekeeper	0%	0%	100%	0%	2
RUHS Health and Hospital Services	RUHS - Medical Center	Licensed Vocational Nurse II	0%	0%	100%	0%	41
RUHS Health and Hospital Services	RUHS - Medical Center	Maintenance Mechanic	0%	0%	100%	0%	1
RUHS Health and Hospital Services	RUHS - Medical Center	Manager of Inpatient Nursing Services	0%	0%	100%	0%	6
RUHS Health and Hospital Services	RUHS - Medical Center	Marketing Director Health Systems	0%	0%	100%	0%	1
RUHS Health and Hospital Services	RUHS - Medical Center	Marketing, Media & Communications Coord	0%	0%	100%	0%	1
RUHS Health and Hospital Services	RUHS - Medical Center	Medical Assistant	0%	0%	100%	0%	29
RUHS Health and Hospital Services	RUHS - Medical Center	Medical Center Business Development Dir	0%	0%	100%	0%	1
RUHS Health and Hospital Services	RUHS - Medical Center	Medical Interpreter/Translator	0%	0%	100%	0%	10
RUHS Health and Hospital Services	RUHS - Medical Center	Medical Library Coordinator	0%	0%	100%	0%	1
RUHS Health and Hospital Services	RUHS - Medical Center	MEDICAL RECORDS TECHNICIAN II	0%	0%	100%	0%	8
RUHS Health and Hospital Services	RUHS - Medical Center	Medical Registrar	0%	0%	100%	0%	3
RUHS Health and Hospital Services	RUHS - Medical Center	Medical Therapy Unit Aide	0%	0%	100%	0%	1
RUHS Health and Hospital Services	RUHS - Medical Center	MEDICAL TRANSCRIPTIONIST II	0%	0%	100%	0%	6
RUHS Health and Hospital Services	RUHS - Medical Center	MEDICAL UNIT CLERK	0%	0%	100%	0%	13
RUHS Health and Hospital Services	RUHS - Medical Center	Monitoring Technician	0%	0%	100%	0%	2
RUHS Health and Hospital Services	RUHS - Medical Center	Nurse Coordinator	0%	0%	100%	0%	3
RUHS Health and Hospital Services	RUHS - Medical Center	Nurse Manager	0%	0%	100%	0%	2
RUHS Health and Hospital Services	RUHS - Medical Center	Nurse Practitioner III - RCRMC	0%	0%	100%	0%	3
RUHS Health and Hospital Services	RUHS - Medical Center	Nurse Practitioner III - Spc-T1	0%	0%	100%	0%	2
RUHS Health and Hospital Services	RUHS - Medical Center	Nursing Assistant	0%	0%	100%	0%	12
RUHS Health and Hospital Services	RUHS - Medical Center	Nursing Education Instructor - Spc-T3	0%	0%	100%	0%	5
RUHS Health and Hospital Services	RUHS - Medical Center	Occupational Therapist II	0%	0%	100%	0%	1
RUHS Health and Hospital Services	RUHS - Medical Center	Office Assistant II	0%	0%	100%	0%	19
RUHS Health and Hospital Services	RUHS - Medical Center	Office Assistant III	0%	0%	100%	0%	19
RUHS Health and Hospital Services	RUHS - Medical Center	Patient Services Coordinator	0%	0%	100%	0%	7
RUHS Health and Hospital Services	RUHS - Medical Center	Pharmacy Director	0%	0%	100%	0%	1
RUHS Health and Hospital Services	RUHS - Medical Center	Pharmacy Resident - 2nd Yr-E	0%	0%	100%	0%	17
RUHS Health and Hospital Services	RUHS - Medical Center	PHARMACY TECHNICIAN II	0%	0%	100%	0%	5
RUHS Health and Hospital Services	RUHS - Medical Center	Physical Therapist II	0%	0%	100%	0%	2
RUHS Health and Hospital Services	RUHS - Medical Center	Physician Assistant Fellowship	0%	0%	100%	0%	1
RUHS Health and Hospital Services	RUHS - Medical Center	PHYSICIAN ASSISTANT III	0%	0%	100%	0%	1
RUHS Health and Hospital Services	RUHS - Medical Center	PHYSICIAN IV	0%	0%	100%	0%	17
RUHS Health and Hospital Services	RUHS - Medical Center	PROGRAM COORDINATOR I	0%	0%	100%	0%	1



VACANT FUNDED POSITION BY FUNDING SOURCE
(Excludes the Sheriff's Department)

Portfolio	Department	Job Class Name	State	Federal	Reimbursement from other Departments/Fees/Other	NCC	Total
RUHS Health and Hospital Services	RUHS - Medical Center	PROGRAM COORDINATOR II	0%	0%	100%	0%	1
RUHS Health and Hospital Services	RUHS - Medical Center	Radiologic Specialist II	0%	0%	100%	0%	2
RUHS Health and Hospital Services	RUHS - Medical Center	Radiologic Specialist Supervisor	0%	0%	100%	0%	1
RUHS Health and Hospital Services	RUHS - Medical Center	Radiologic Technologist II	0%	0%	100%	0%	2
RUHS Health and Hospital Services	RUHS - Medical Center	RECREATION THERAPIST	0%	0%	100%	0%	1
RUHS Health and Hospital Services	RUHS - Medical Center	REGISTERED NURSE II - MC/CHC	0%	0%	100%	0%	1
RUHS Health and Hospital Services	RUHS - Medical Center	REGISTERED NURSE III - MC/CHC	0%	0%	100%	0%	156
RUHS Health and Hospital Services	RUHS - Medical Center	Resident Physician & Surgeon - 3rd Yr-E	0%	0%	100%	0%	23
RUHS Health and Hospital Services	RUHS - Medical Center	Resident Physician & Surgeon - 4th Yr-E	0%	0%	100%	0%	1
RUHS Health and Hospital Services	RUHS - Medical Center	Resident Physician & Surgeon - 5th Yr-E	0%	0%	100%	0%	10
RUHS Health and Hospital Services	RUHS - Medical Center	Resident Physician & Surgeon - 7th Yr-E	0%	0%	100%	0%	6
RUHS Health and Hospital Services	RUHS - Medical Center	Respiratory Care Practitioner II, Reg	0%	0%	100%	0%	3
RUHS Health and Hospital Services	RUHS - Medical Center	Revenue & Recovery Technician I	0%	0%	100%	0%	1
RUHS Health and Hospital Services	RUHS - Medical Center	RUHS Compliance Program Manager	0%	0%	100%	0%	2
RUHS Health and Hospital Services	RUHS - Medical Center	RUHS Contracts, Purchasing & Matl Mgr	0%	0%	100%	0%	1
RUHS Health and Hospital Services	RUHS - Medical Center	RUHS Managing Psychologist - PC & RP	0%	0%	100%	0%	2
RUHS Health and Hospital Services	RUHS - Medical Center	RUHS P & S Excellence Program Admin	0%	0%	100%	0%	2
RUHS Health and Hospital Services	RUHS - Medical Center	RUHS Quality Assessment Manager	0%	0%	100%	0%	3
RUHS Health and Hospital Services	RUHS - Medical Center	RUHS Revenue Cycle Analyst II	0%	0%	100%	0%	3
RUHS Health and Hospital Services	RUHS - Medical Center	RUHS Social Services Director	0%	0%	100%	0%	1
RUHS Health and Hospital Services	RUHS - Medical Center	SECRETARY I	0%	0%	100%	0%	5
RUHS Health and Hospital Services	RUHS - Medical Center	SECRETARY II	0%	0%	100%	0%	2
RUHS Health and Hospital Services	RUHS - Medical Center	Social Services Practitioner III	0%	0%	100%	0%	5
RUHS Health and Hospital Services	RUHS - Medical Center	SR ACCOUNTANT	0%	0%	100%	0%	1
RUHS Health and Hospital Services	RUHS - Medical Center	Sr Accounting Assistant	0%	0%	100%	0%	3
RUHS Health and Hospital Services	RUHS - Medical Center	Sr Administrative Analyst (D)	0%	0%	100%	0%	1
RUHS Health and Hospital Services	RUHS - Medical Center	Sr Clinical Lab Scientist	0%	0%	100%	0%	1
RUHS Health and Hospital Services	RUHS - Medical Center	Sr Clinical Pharmacist	0%	0%	100%	0%	2
RUHS Health and Hospital Services	RUHS - Medical Center	SR CLINICAL PSYCHOLOGIST	0%	0%	100%	0%	2
RUHS Health and Hospital Services	RUHS - Medical Center	Sr Director of Development	0%	0%	100%	0%	1
RUHS Health and Hospital Services	RUHS - Medical Center	Sr Medical Records Technician	0%	0%	100%	0%	1
RUHS Health and Hospital Services	RUHS - Medical Center	Sr Pharmacy Technician	0%	0%	100%	0%	2
RUHS Health and Hospital Services	RUHS - Medical Center	Sr Public Info Specialist	0%	0%	100%	0%	1
RUHS Health and Hospital Services	RUHS - Medical Center	Stationary Engineer	0%	0%	100%	0%	3
RUHS Health and Hospital Services	RUHS - Medical Center	Sterile Processing Technician II	0%	0%	100%	0%	3
RUHS Health and Hospital Services	RUHS - Medical Center	Stock Clerk	0%	0%	100%	0%	3
RUHS Health and Hospital Services	RUHS - Medical Center	Supv Dietitian	0%	0%	100%	0%	1
RUHS Health and Hospital Services	RUHS - Medical Center	Supv Medical Records Technician	0%	0%	100%	0%	2
RUHS Health and Hospital Services	RUHS - Medical Center	SUPV OFFICE ASSISTANT I	0%	0%	100%	0%	1
RUHS Health and Hospital Services	RUHS - Medical Center	SUPV OFFICE ASSISTANT II	0%	0%	100%	0%	1
RUHS Health and Hospital Services	RUHS - Medical Center	Supv Research Specialist	0%	0%	100%	0%	1
RUHS Health and Hospital Services	RUHS - Medical Center	Supv Therapist	0%	0%	100%	0%	1
RUHS Health and Hospital Services	RUHS - Medical Center	Surgical Technician	0%	0%	100%	0%	10
RUHS Health and Hospital Services	RUHS - Medical Center	Trauma Program Manager	0%	0%	100%	0%	1
RUHS Health and Hospital Services	RUHS - Public Health	ACCOUNTANT II	0%	0%	93%	7%	2
RUHS Health and Hospital Services	RUHS - Public Health	ADMIN SVCS OFFICER	0%	0%	93%	7%	1
RUHS Health and Hospital Services	RUHS - Public Health	ADMIN SVCS SUPV	0%	37%	56%	7%	1
RUHS Health and Hospital Services	RUHS - Public Health	COMMUNICABLE DISEASES SPEC	83%	9%	0%	8%	5
RUHS Health and Hospital Services	RUHS - Public Health	DEP DIRECTOR	0%	0%	93%	7%	1
RUHS Health and Hospital Services	RUHS - Public Health	FISCAL MANAGER	0%	0%	93%	7%	1
RUHS Health and Hospital Services	RUHS - Public Health	GIS RESEARCH SPECIALIST I	0%	0%	100%	0%	1
RUHS Health and Hospital Services	RUHS - Public Health	HEALTH EDUCATION ASST II	93%	0%	0%	7%	6
RUHS Health and Hospital Services	RUHS - Public Health	HEALTH SERVICES ASST - DOPH	54%	0%	10%	36%	5
RUHS Health and Hospital Services	RUHS - Public Health	IT BUSINESS SYS ANALYST III	0%	0%	93%	7%	1
RUHS Health and Hospital Services	RUHS - Public Health	IT SYSTEMS ADMINISTRATOR III	0%	0%	93%	7%	1
RUHS Health and Hospital Services	RUHS - Public Health	IT USER SUPPORT TECH II	0%	0%	93%	7%	1
RUHS Health and Hospital Services	RUHS - Public Health	LICENSED VOC NURSE II	62%	0%	31%	7%	3
RUHS Health and Hospital Services	RUHS - Public Health	MEDICAL RECORDS TECHNICIAN II	37%	56%	0%	7%	1
RUHS Health and Hospital Services	RUHS - Public Health	NURSE PRACTITIONER II	46%	46%	0%	8%	1
RUHS Health and Hospital Services	RUHS - Public Health	NUTRITIONIST	0%	93%	0%	7%	1
RUHS Health and Hospital Services	RUHS - Public Health	Office Assistant II	93%	0%	0%	7%	1
RUHS Health and Hospital Services	RUHS - Public Health	Office Assistant III	28%	0%	32%	40%	3
RUHS Health and Hospital Services	RUHS - Public Health	P.H. MICROBIOLOGIST II	0%	0%	38%	62%	1
RUHS Health and Hospital Services	RUHS - Public Health	PHYSICIAN IV	0%	93%	0%	7%	1
RUHS Health and Hospital Services	RUHS - Public Health	PROGRAM CHIEF II	79%	0%	14%	7%	1
RUHS Health and Hospital Services	RUHS - Public Health	PROGRAM COORDINATOR I	93%	0%	0%	7%	1
RUHS Health and Hospital Services	RUHS - Public Health	PROGRAM COORDINATOR II	53%	0%	40%	7%	2
RUHS Health and Hospital Services	RUHS - Public Health	PROGRAM DIRECTOR	56%	0%	22%	22%	2



VACANT FUNDED POSITION BY FUNDING SOURCE
(Excludes the Sheriff's Department)

Portfolio	Department	Job Class Name	State	Federal	Reimbursement from other Departments/Fees/Other	NCC	Total
RUHS Health and Hospital Services	RUHS - Public Health	REGISTERED NURSE V	0%	0%	93%	7%	1
RUHS Health and Hospital Services	RUHS - Public Health	RESEARCH SPECIALIST II	0%	0%	93%	7%	1
RUHS Health and Hospital Services	RUHS - Public Health	SECRETARY I	50%	0%	0%	50%	1
RUHS Health and Hospital Services	RUHS - Public Health	SOCIAL SVCS PRACTITIONER III	68%	24%	0%	8%	2
RUHS Health and Hospital Services	RUHS - Public Health	SR COMMUNICABLE DISEASES SPEC	46%	46%	0%	8%	1
RUHS Health and Hospital Services	RUHS - Public Health	SUPV NUTRITIONIST I	0%	93%	0%	7%	1
RUHS Health and Hospital Services	RUHS - Public Health	SUPV OFFICE ASSISTANT I	93%	0%	0%	7%	1
RUHS Health and Hospital Services	RUHS - California Children Services	ADMIN SVCS ASST	32%	48%	0%	20%	1
RUHS Health and Hospital Services	RUHS - California Children Services	CA CHILDREN SVCS TECH COORD	32%	48%	0%	20%	1
RUHS Health and Hospital Services	RUHS - California Children Services	CHF THERAPIST FOR PHC	64%	16%	0%	20%	1
RUHS Health and Hospital Services	RUHS - California Children Services	COMMUNITY SERVICES ASST	32%	48%	0%	20%	1
RUHS Health and Hospital Services	RUHS - California Children Services	Eligibility Tech III	32%	48%	0%	20%	1
RUHS Health and Hospital Services	RUHS - California Children Services	Office Assistant II	53%	27%	0%	20%	5
RUHS Health and Hospital Services	RUHS - California Children Services	PHYSICIAN IV	32%	48%	0%	20%	1
RUHS Health and Hospital Services	RUHS - California Children Services	REGISTERED NURSE V	32%	48%	0%	20%	2
RUHS Health and Hospital Services	RUHS - California Children Services	SOCIAL SVCS PRACTITIONER III	32%	48%	0%	20%	1
RUHS Health and Hospital Services	RUHS - California Children Services	SOCIAL SVCS SUPERVISOR II	32%	48%	0%	20%	1
RUHS Health and Hospital Services	RUHS - California Children Services	SR THERAPIST	80%	0%	0%	20%	2
Grand Total							3306



COUNTY OF RIVERSIDE CALIFORNIA

Summary of Deleted Positions (Excludes the Sheriff's Department)

Department	TOTAL POSITIONS	Sum of NCC \$	Sum of Other \$	Average % of State Funded Positions	Average % of Federal Funded Positions	Average % of Reimbursement from other Departments/Fees/Other	Average % of NCC Funded Positions
County Clerk-Recorder	1		38,614	0%	0%	100%	0%
DPSS Administration	130	466,696	2,137,272	31%	64%	0%	5%
Facilities Management Administration	2		248,056	0%	0%	100%	0%
Fair & National Date Festival	1	-	68,286	0%	0%	100%	0%
FM - Design & Constructions	2		187,037	0%	0%	100%	0%
Mental Health Administration	4		165,225	60%	40%	0%	0%
Mental Health Detention	2	127,269		0%	0%	0%	100%
Mental Health Treatment	24		2,151,091	43%	57%	0%	0%
Parks	1	-	24,766	0%	0%	100%	0%
Riv Co Dep of Child Support Services	17	-	1,487,430	34%	66%	0%	0%
Treasurer-Tax Collector	3	2,480	183,803	0%	0%	100%	0%
County Services Area Admin	1	-	8,184	0%	0%	100%	0%
FM - Custodial	5		293,728	0%	0%	100%	0%
FM - Maintenance	3		391,357	0%	0%	100%	0%
FM - Real Estate	3		333,625	0%	0%	100%	0%
FM - Parking	3	207,622		0%	0%	100%	0%
Grand Total	202	804,067	7,718,474	27%	42%	28%	4%



Countywide HRMS Filled/Vacant Positions

Department	Positions	FY19/20 (As of 6/17/2020)	FY20/21 (As of 8/24/2020)	Approved Vacancy Rate
Agricultural Commissioner	Filled	52	52	5%
Agricultural Commissioner	Vacant	6	5	
Agricultural Commissioner	Vacancy Rate	10%	9%	
Agricultural Commissioner	Total Positions	58	57	
Assessor	Filled	359	358	5%
Assessor	Vacant	39	40	
Assessor	Vacancy Rate	10%	10%	
Assessor	Total Positions	398	398	
Auditor-Controller	Filled	77	75	5%
Auditor-Controller	Vacant	21	14	
Auditor-Controller	Vacancy Rate	21%	16%	
Auditor-Controller	Total Positions	98	89	
Board of Supervisors	Filled	58	57	5%
Board of Supervisors	Vacant	11	2	
Board of Supervisors	Vacancy Rate	16%	3%	
Board of Supervisors	Total Positions	69	59	
Building & Safety	Filled	27	26	5%
Building & Safety	Vacant	14	13	
Building & Safety	Vacancy Rate	34%	33%	
Building & Safety	Total Positions	41	39	
Children & Families First Comm	Filled	35	50	5%
Children & Families First Comm	Vacant	10	13	
Children & Families First Comm	Vacancy Rate	22%	21%	
Children & Families First Comm	Total Positions	45	63	
Code Enforcement	Filled	53	52	5%
Code Enforcement	Vacant	1	2	
Code Enforcement	Vacancy Rate	2%	4%	
Code Enforcement	Total Positions	54	54	
Cooperative Extension	Filled	3	3	5%
Cooperative Extension	Vacant	2	3	
Cooperative Extension	Vacancy Rate	40%	50%	
Cooperative Extension	Total Positions	5	6	
County Airports	Filled	10	11	5%
County Airports	Vacant	4	1	
County Airports	Vacancy Rate	29%	8%	
County Airports	Total Positions	14	12	
County Counsel	Filled	76	78	5%
County Counsel	Vacant	12	6	
County Counsel	Vacancy Rate	14%	7%	
County Counsel	Total Positions	88	84	
County Facilities Districts	Filled	2	1	5%
County Facilities Districts	Vacant	1	-	
County Facilities Districts	Vacancy Rate	33%	0%	
County Facilities Districts	Total Positions	3	1	



Countywide HRMS Filled/Vacant Positions

Department	Positions	FY19/20 (As of 6/17/2020)	FY20/21 (As of 8/24/2020)	Approved Vacancy Rate
Regional Parks and Open Space Districts	Filled	86	86	5%
Regional Parks and Open Space Districts	Vacant	30	4	
Regional Parks and Open Space Districts	Vacancy Rate	26%	4%	
Regional Parks and Open Space Districts	Total Positions	116	90	
County Service Areas	Filled	30	31	5%
County Service Areas	Vacant	18	10	
County Service Areas	Vacancy Rate	38%	24%	
County Service Areas	Total Positions	48	41	
Department of Animal Services	Filled	185	165	5%
Department of Animal Services	Vacant	36	37	
Department of Animal Services	Vacancy Rate	16%	18%	
Department of Animal Services	Total Positions	221	202	
Department of Community Action	Filled	49	-	5%
Department of Community Action	Vacant	28	77	
Department of Community Action	Vacancy Rate	36%	100%	
Department of Community Action	Total Positions	77	77	
Department of Environmental Health	Filled	185	184	5%
Department of Environmental Health	Vacant	17	11	
Department of Environmental Health	Vacancy Rate	8%	6%	
Department of Environmental Health	Total Positions	202	195	
District Attorney	Filled	692	688	12%
District Attorney	Vacant	188	92	
District Attorney	Vacancy Rate	21%	12%	
District Attorney	Total Positions	880	780	
DPSS Agency	Filled	3,897	3,933	15%
DPSS Agency	Vacant	1,317	1,231	
DPSS Agency	Vacancy Rate	25%	24%	
DPSS Agency	Total Positions	5,214	5,164	
Business Community Services*	Filled	218	40	5%
Business Community Services*	Vacant	119	243	
Business Community Services*	Vacancy Rate	35%	86%	
Business Community Services*	Total Positions	337	283	
Edward Dean Museum	Filled	1	1	5%
Edward Dean Museum	Vacant	-	-	
Edward Dean Museum	Vacancy Rate	0%	0%	
Edward Dean Museum	Total Positions	1	1	
Emergency Management Department	Filled	68	72	5%
Emergency Management Department	Vacant	9	5	
Emergency Management Department	Vacancy Rate	12%	6%	
Emergency Management Department	Total Positions	77	77	
Executive Office	Filled	35	32	5%
Executive Office	Vacant	6	2	
Executive Office	Vacancy Rate	15%	6%	
Executive Office	Total Positions	41	34	



Countywide HRMS Filled/Vacant Positions

Department	Positions	FY19/20 (As of 6/17/2020)	FY20/21 (As of 8/24/2020)	Approved Vacancy Rate
Facilities Management	Filled	426	399	5%
Facilities Management	Vacant	126	81	
Facilities Management	Vacancy Rate	23%	17%	
Facilities Management	Total Positions	552	480	
Fire Protection	Filled	249	249	5%
Fire Protection	Vacant	33	32	
Fire Protection	Vacancy Rate	12%	11%	
Fire Protection	Total Positions	282	281	
Flood	Filled	225	226	5%
Flood	Vacant	76	79	
Flood	Vacancy Rate	25%	26%	
Flood	Total Positions	301	305	
Housing Authority*	Filled	5	105	5%
Housing Authority*	Vacant	4	23	
Housing Authority*	Vacancy Rate	44%	18%	
Housing Authority*	Total Positions	9	128	
Housing, Homeless, Workforce Solutions*	Filled	-	144	5%
Housing, Homeless, Workforce Solutions*	Vacant	-	45	
Housing, Homeless, Workforce Solutions*	Vacancy Rate	0%	24%	
Housing, Homeless, Workforce Solutions*	Total Positions	-	189	
Human Resources	Filled	2,689	3,107	5%
Human Resources	Vacant	1,822	910	
Human Resources	Vacancy Rate	40%	23%	
Human Resources	Total Positions	4,511	4,017	
Information Technology	Filled	394	401	5%
Information Technology	Vacant	49	32	
Information Technology	Vacancy Rate	11%	7%	
Information Technology	Total Positions	443	433	
In-Home Sup Serv Public Auth	Filled	48	51	5%
In-Home Sup Serv Public Auth	Vacant	54	18	
In-Home Sup Serv Public Auth	Vacancy Rate	53%	26%	
In-Home Sup Serv Public Auth	Total Positions	102	69	
Office On Aging	Filled	57	58	5%
Office On Aging	Vacant	30	29	
Office On Aging	Vacancy Rate	34%	33%	
Office On Aging	Total Positions	87	87	
Planning	Filled	19	19	5%
Planning	Vacant	10	9	
Planning	Vacancy Rate	34%	32%	
Planning	Total Positions	29	28	
Probation	Filled	800	795	5%
Probation	Vacant	295	126	
Probation	Vacancy Rate	27%	14%	
Probation	Total Positions	1,095	921	



Countywide HRMS Filled/Vacant Positions

Department	Positions	FY19/20 (As of 6/17/2020)	FY20/21 (As of 8/24/2020)	Approved Vacancy Rate
Public Defender	Filled	227	231	5%
Public Defender	Vacant	29	17	
Public Defender	Vacancy Rate	11%	7%	
Public Defender	Total Positions	256	248	
Purchasing and Fleet Services	Filled	97	93	5%
Purchasing and Fleet Services	Vacant	10	26	
Purchasing and Fleet Services	Vacancy Rate	9%	22%	
Purchasing and Fleet Services	Total Positions	107	119	
Registrar Of Voters	Filled	36	38	5%
Registrar Of Voters	Vacant	3	2	
Registrar Of Voters	Vacancy Rate	8%	5%	
Registrar Of Voters	Total Positions	39	40	
Riv Co Dept Of Child Supt Svcs	Filled	308	308	5%
Riv Co Dept Of Child Supt Svcs	Vacant	35	61	
Riv Co Dept Of Child Supt Svcs	Vacancy Rate	10%	17%	
Riv Co Dept Of Child Supt Svcs	Total Positions	343	369	
RUHS - Behavioral Health	Filled	1,708	1,721	5%
RUHS - Behavioral Health	Vacant	501	450	
RUHS - Behavioral Health	Vacancy Rate	23%	21%	
RUHS - Behavioral Health	Total Positions	2,209	2,171	
RUHS - Community Health Clinics	Filled	458	475	5%
RUHS - Community Health Clinics	Vacant	178	163	
RUHS - Community Health Clinics	Vacancy Rate	28%	26%	
RUHS - Community Health Clinics	Total Positions	636	638	
RUHS - Correctional Health Systems	Filled	239	236	5%
RUHS - Correctional Health Systems	Vacant	61	64	
RUHS - Correctional Health Systems	Vacancy Rate	20%	21%	
RUHS - Correctional Health Systems	Total Positions	300	300	
RUHS - Medical Center	Filled	2,951	2,973	5%
RUHS - Medical Center	Vacant	770	720	
RUHS - Medical Center	Vacancy Rate	21%	19%	
RUHS - Medical Center	Total Positions	3,721	3,693	
RUHS - Public Health	Filled	572	576	5%
RUHS - Public Health	Vacant	194	219	
RUHS - Public Health	Vacancy Rate	25%	28%	
RUHS - Public Health	Total Positions	766	795	
Sheriff	Filled	3,737	3,778	15%
Sheriff	Vacant	1,157	1,130	
Sheriff	Vacancy Rate	24%	23%	
Sheriff	Total Positions	4,894	4,908	
Trans and Land Mgmt Agency	Filled	77	76	5%
Trans and Land Mgmt Agency	Vacant	12	9	
Trans and Land Mgmt Agency	Vacancy Rate	13%	11%	
Trans and Land Mgmt Agency	Total Positions	89	85	



COUNTY OF RIVERSIDE
CALIFORNIA

Countywide HRMS Filled/Vacant Positions

Department	Positions	FY19/20 (As of 6/17/2020)	FY20/21 (As of 8/24/2020)	Approved Vacancy Rate
Transportation	Filled	354	354	5%
Transportation	Vacant	48	50	
Transportation	Vacancy Rate	12%	12%	
Transportation	Total Positions	402	404	
Treasurer-Tax Collector	Filled	97	97	5%
Treasurer-Tax Collector	Vacant	18	14	
Treasurer-Tax Collector	Vacancy Rate	16%	13%	
Treasurer-Tax Collector	Total Positions	115	111	
Veterans Services	Filled	19	19	5%
Veterans Services	Vacant	3	3	
Veterans Services	Vacancy Rate	14%	14%	
Veterans Services	Total Positions	22	22	
Waste Resources Management District	Filled	223	223	5%
Waste Resources Management District	Vacant	58	60	
Waste Resources Management District	Vacancy Rate	21%	21%	
Waste Resources Management District	Total Positions	281	283	

*Due to EDA restructuring historical position data does not exist