

**SUBMITTAL TO THE BOARD OF SUPERVISORS
COUNTY OF RIVERSIDE, STATE OF CALIFORNIA**



ITEM: 3.26
(ID # 14934)

MEETING DATE:
Tuesday, May 18, 2021

FROM: TLMA-TRANSPORTATION:

SUBJECT: TRANSPORTATION AND LAND MANAGEMENT AGENCY/TRANSPORTATION:
Adopt Resolution No. 2021-068 ordering the Annexation of Zone 213 to Landscaping and Lighting Maintenance District No. 89-1-Consolidated, Anza, District 3. [\$1,972 Ongoing Cost - L&LMD No. 89-1-C 100%]

RECOMMENDED MOTION: That the Board of Supervisors:

1. Adopt Resolution No. 2021-068, Resolution of the Board of Supervisors of the County of Riverside ordering the annexation of Zone 213 to Landscaping and Lighting Maintenance District No. 89-1-Consolidated of the County of Riverside and confirming the diagram and assessment for Zone 213 of Landscaping and Lighting Maintenance District No. 89-1-Consolidated and levying assessments on all assessable lots and parcels of land therein within the boundaries of said zone for the fiscal year 2021-22;
2. Direct the Clerk of the Board to immediately file the diagram and assessment, or a certified copy thereof, with the County Auditor-Controller in accordance with Section 22641 of the Streets and Highways Code; and
3. Direct the County Auditor-Controller to establish an interest-bearing sub-fund 20300 to receive deposits and interest thereon from Zone 213 of Landscaping and Lighting Maintenance District No. 89-1-Consolidated; in accordance with Sections 22655 and 22656 of the Streets and Highways Code.

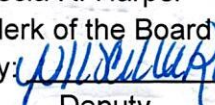
ACTION: Policy


Mark Lancaster, Director of Transportation 4/20/2021

MINUTES OF THE BOARD OF SUPERVISORS

On motion of Supervisor Spiegel, seconded by Supervisor Perez and duly carried by unanimous vote, IT WAS ORDERED that the above matter is approved as recommended.

Ayes: Jeffries, Spiegel, Washington, Perez, and Hewitt
Nays: None
Absent: None
Date: May 18, 2021
xc: Transp., Auditor

Kecia R. Harper
Clerk of the Board
By: 
Deputy

**SUBMITTAL TO THE BOARD OF SUPERVISORS COUNTY OF RIVERSIDE,
STATE OF CALIFORNIA**

FINANCIAL DATA	Current Fiscal Year:	Next Fiscal Year:	Total Cost:	Ongoing Cost
COST	\$ 0	\$ 1,972	\$ 0	\$ 1,972
NET COUNTY COST	\$ 0	\$ 0	\$ 0	\$ 0
SOURCE OF FUNDS: L&LMD No. 89-1-C – 100% There are no General Funds used in this project.			Budget Adjustment:	N/A
			For Fiscal Year:	21/22

C.E.O. RECOMMENDATION: Approve

BACKGROUND:

Summary

Landscaping and Lighting Maintenance Districts (L&LMD's) are formed for the purpose of creating a funding mechanism to pay for the installation and maintenance of landscaping, streetlights, traffic signals, drainage inlet water quality filters, decorative fencing, and other roadside features within the road right of way. Within an established L&LMD, zones are created for specific developments, a fee structure is developed specific to the features within that zone, and the zone is then assessed through a tax levy on annual basis for the installation and maintenance of the features within that particular zone.

L&LMD No. 89-1-Consolidated ("L&LMD No. 89-1-C") was formed in 1994, Resolution No. 94-389, and currently consists of 166 individual zones with different fee structures spread throughout Riverside County. The commercial property owner of Plot Plan No. 26320, as described in the attached Exhibit "A", has petitioned the County to annex their property into L&LMD No.89-1-C, creating Zone 213. The boundaries of Zone 213 will encompass the entire Plot Plan No. 26320 and will include ensuring the maintenance and servicing of dormant parkway landscaping.

On March 23, 2021, a public hearing was held to receive all testimony regarding the annexation of Zone 213 to L&LMD No. 89-1-C. After closing the public hearing, the Board of Supervisors directed the Director of Transportation, or their designee, to tabulate the assessment ballots that had been received prior to the close of the hearing. The assessment ballots were to be tabulated on March 24, 2021 at 10:00 a.m. in Conference Room C on the 8th Floor of the County Administrative Center. The tabulation shows that votes representing 1 parcel out of a possible 1 were cast, and that 1 vote (or 100%) was cast in favor of the annexation of Zone 213 to L&LMD No. 89-1-C and the levy and enrollment of the special assessment.

Adoption of Resolution No. 2021-068 confirms the assessment levy as indicated in the Engineer's Report for fiscal year 2021-22 for Zone 213 of L&LMD No. 89-1-C and orders the placement of the annual assessment on the County's Assessment Roll for fiscal year 2021-22.

Reference

**SUBMITTAL TO THE BOARD OF SUPERVISORS COUNTY OF RIVERSIDE,
STATE OF CALIFORNIA**

At the direction of the County of Riverside Board of Supervisors, L&LMD No. 89-1-C was formed in 1994 by Resolution No. 94-389 authorizing the annexation of new zones into L&LMD No. 89-1-C for the purpose of levying assessments to pay for the installation and maintenance of landscaping, streetlights and other right-of-way approved improvements.

The zone-specific Engineer's Report for fiscal year 2021-22 was prepared in compliance with the requirement of Article 4, Chapter 1 of the Landscaping and Lighting Act of 1972, which is Part 2 of Division 15 of the California Streets and Highways Code. The County initiates annexation proceedings for the annual levy of assessments by passing a resolution, which proposes the new levy under the Landscaping and Lighting Act of 1972. This resolution also describes the improvements, describes the location of the zone within the District and finally orders an engineer, who is a registered professional engineer, certified by the State of California, to prepare and file a detailed report.

In November 1996, California voters passed Proposition 218, Right to Vote on Taxes Act which added Articles XIII C and XIII D to the California Constitution, creating new procedures that must be followed to levy annual assessments under the Landscaping and Lighting Act of 1972. A County may levy annual assessments for an assessment district after complying with the requirements of the Landscaping and Lighting Act of 1972, and the provisions of Proposition 218 Right to Vote on Taxes Act.

Impact on Residents and Businesses

The new assessment is for the purpose of providing ensuring the maintenance and servicing of dormant parkway landscaping within public right-of-way.

Only the residential/commercial property owners within the proposed boundaries of Zone 213, which are represented by Plot Plan No. 26320, as described in the attached Exhibit "A" (a two-page exhibit containing a description and diagram) are impacted by the cost of this annexation. By setting up an assessment for the maintenance of certain infrastructure required by the development, the County requires that the development pay for its maintenance impact, rather than the obligation falling upon public funding sources.

SUPPLEMENTAL:

Additional Fiscal Information

The proposed budget for fiscal year 2021-22 for Zone 213 is \$1,972. This will result in an assessment for fiscal year 2021-22 within Zone 213 of \$1,505 per acre. Zone 213 includes one commercial parcel totalling 1.31 acres. The annual assessment may be adjusted annually by the greater of 2% or the cumulative percentage increase in the Consumer Price Index for all Urban Customers (CPI-U), if any, as it stands as of March of each year over the base index for March of 2021.

**SUBMITTAL TO THE BOARD OF SUPERVISORS COUNTY OF RIVERSIDE,
STATE OF CALIFORNIA**

Contract History and Price Reasonableness

N/A

ATTACHMENTS:

- A. Exhibit A
- B. Location Map
- C. Resolution No. 2021-068



Jason Farin, Principal Management Analyst 5/12/2021

2
3 **RESOLUTION NO. 2021-068**

4 **RESOLUTION OF THE BOARD OF SUPERVISORS OF THE COUNTY OF RIVERSIDE ORDERING**
5 **THE ANNEXATION OF ZONE 213 TO LANDSCAPING AND LIGHTING MAINTENANCE DISTRICT**
6 **NO. 89-1-CONSOLIDATED OF THE COUNTY OF RIVERSIDE AND CONFIRMING THE DIAGRAM**
7 **AND ASSESSMENT FOR ZONE 213 OF LANDSCAPING AND LIGHTING MAINTENANCE**
8 **DISTRICT NO. 89-1-CONSOLIDATED AND LEVYING ASSESSMENTS ON ALL ASSESSABLE**
9 **LOTS AND PARCELS OF LAND THEREIN WITHIN THE BOUNDARIES OF SAID ZONE FOR THE**
10 **FISCAL YEAR 2021-22**

11
12 **WHEREAS**, on January 26, 2021 the Board of Supervisors (hereinafter the "Board of
13 Supervisors") of the County of Riverside (hereinafter the "County") adopted Resolution No. 2021-002,
14 pursuant to Section 22608 and Section 22585 et seq. of the Streets and Highways Code, declaring the
15 intention of the Board of Supervisors to order the annexation of Zone 213 to Landscaping and Lighting
16 Maintenance District No. 89-1-Consolidated (hereinafter "L&LMD No. 89-1-C") of the County pursuant
17 to the Landscaping and Lighting Act of 1972, being Part 2 (commencing with Section 22500) of Division
18 15 of the Streets and Highways Code, and giving notice of and setting a public hearing for 9:30 a.m. on
19 March 23, 2021 at the meeting room of the Board of Supervisors and requiring that the notice of the
20 public hearing and assessment ballots be mailed to all owners of property within Zone 213 as shown on
21 the equalized tax roll; and

22 **WHEREAS**, notice of said public hearing was duly published and mailed as required by
23 Resolution No. 2021-002, Section 22588 of the Streets and Highways Code and Sections 53753 and
24 54954.6 of the Government Code and the assessment ballots were timely mailed to all owners of
25 property within said Zone 213 as shown on the equalized tax roll; and
26

05.18.2021 3.26

FORM APPROVED COUNTY COUNSEL
BY: D. C. L. 5/5/21
DARREN C. ZIEGLER DATE

1 **WHEREAS**, at 9:30 a.m. on March 23, 2021, as set forth in Resolution No. 2021-002, the Board
2 of Supervisors held a public hearing and afforded all interested persons an opportunity to be heard, and
3 considered all oral statements and all written protest or communications made or filed by any interested
4 persons, closed the public hearing and directed the Director of Transportation, or their designee, as an
5 impartial person having no vested interest in the annexation of Zone 213 to L&LMD No. 89-1-C as
6 required by Section 53753(e) of the Government Code to tabulate the assessment ballots that had been
7 received prior to the close of the public hearing; and

8 **WHEREAS**, the tabulation of the assessment ballots show that assessment ballots were timely
9 received from the owner of 1 parcel out of a possible 1 parcel and that 1 parcel (100 percent of the
10 assessment ballots received) voted in favor of annexation of Zone 213 to L&LMD No. 89-1-C and the
11 levy of an annual assessment in said Zone 213 beginning fiscal year 2021-22; and

12 **WHEREAS**, the Board of Supervisors may proceed, pursuant to Section 22631 of the Streets
13 and Highways Code, to adopt a resolution ordering the improvements and the annexation of Zone 213
14 and confirming the diagram and assessment, either as originally proposed, or as changed by the Board
15 of Supervisors, and the adoption of such a resolution shall constitute the levy of an assessment on all
16 assessable lots and parcels of land within Zone 213 of L&LMD No. 89-1-C for fiscal year 2021-22.

17 **NOW, THEREFORE, BE IT RESOLVED, FOUND, DETERMINED AND ORDERED** by the
18 Board of Supervisors of the County in regular session on May 18, 2021 as follows:

19 **Section 1. Findings.** The Board of Supervisors finds:

- 20 (a) the preceding recitals are correct;
- 21 (b) compliance has been had with all the requirements of the Landscaping and
22 Lighting Act of 1972, being Part 2 (commencing with Section 22500) of Division
23 15 of the Streets and Highways Code, and Sections 53753 and 54954.6 of the
24 Government Code;
- 25 (c) a majority protest to the annexation of, and annual assessment of, Zone 213 of
26 L&LMD No. 89-1-C has not been filed;

- 1 (d) the tabulation of the assessment ballots timely received was 100 percent voted in
2 favor of annexation of Zone 213 to L&LMD No. 89-1-C and the levy of an annual
3 assessment beginning fiscal year 2021-22, and 0 percent voted no;
- 4 (e) the Board of Supervisors may proceed to adopt a resolution ordering the
5 annexation of Zone 213 to L&LMD No. 89-1-C;
- 6 (f) the Board of Supervisors may proceed to adopt a resolution confirming the
7 diagram and assessment for Zone 213 of L&LMD No. 89-1-C either as originally
8 proposed or as changed by it; and
- 9 (g) the assessments to be levied on the assessable lots and parcels of land within
10 Zone 213 of L&LMD No. 89-1-C for ensuring the maintenance and servicing of
11 dormant parkway landscaping improvements in said Zone 213 during the fiscal
12 year 2021-22 as contained in the report of the Director of Transportation which is
13 on file with the Clerk of the Board of Supervisors (hereinafter the "Report") are
14 based on benefits derived by such lots and parcels from the availability of such
15 dormant parkway landscaping improvements, and are not based upon the
16 ownership of such lots and parcels.

17 **Section 2. Annexation.** Zone 213, as proposed to be annexed to L&LMD No.
18 89-1-C, which includes all the property subject to Plot Plan No. 26320 in the County of Riverside, State
19 of California as described in Exhibit "A" attached hereto, shall be and is annexed into L&LMD No. 89-1-C.

20 **Section 3. Improvements.** The improvements authorized for Zone 213 of L&LMD
21 No. 89-1-C are:

- 22 (a) The maintenance and servicing of landscaping within the public right-of-way
23 including the trimming, fertilizing, weeding and replanting of trees, shrubs, grass,
24 and other ornamental vegetation; and

25 **Section 4. Confirmation of Report.** The Report and the assessment diagram and
26 the assessment of estimated costs for ensuring the maintenance and servicing of dormant parkway

1 landscaping improvements in Zone 213 of L&LMD No. 89-1-C for fiscal year 2021-22 as contained in
2 the Report are confirmed.

3 **Section 5. Levy of Assessment.** Pursuant to Section 22594 of the Streets and
4 Highways Code the adoption of this resolution constitutes the levy of the assessment for ensuring the
5 maintenance and servicing of dormant parkway landscaping improvements in Zone 213 of L&LMD No.
6 89-1-C during fiscal year 2021-22, as contained in the Report, and such assessment is levied. The Clerk
7 of the Board of Supervisors is directed to file a certified copy of this resolution, together with the diagram
8 and assessment contained in the Report with the County Auditor-Controller of the County of Riverside,
9 who, pursuant to Section 22645 of the Streets and Highways Code, shall enter on the County
10 assessment roll opposite each lot or parcel of land the amount assessed thereupon, as shown in said
11 assessment.

12 **Section 6. Effective Date.** This Resolution shall take effect from and after its date of
13 adoption.

14
15 ROLL CALL:

16 Ayes: Jeffries, Spiegel, Washington, Perez and Hewitt
17 Nays: None
18 Absent: None

19 The foregoing is certified to be a true copy of a resolution
20 duly adopted by said Board of Supervisors on the date therein set
21 forth.

22 Kecia R. Harper, Clerk of said Board

23
24 By  _____

25 Deputy
26

EXHIBIT "A"

DESCRIPTION OF BOUNDARIES

The boundaries of Zone 213 to be annexed into Landscaping and Lighting Maintenance District No. 89-1-Consolidated, of the County of Riverside, are coterminous with the boundaries of APN 573-260-006 as shown on Assessment Roll in the County of Riverside, State of California in Fiscal Year 2021-22.

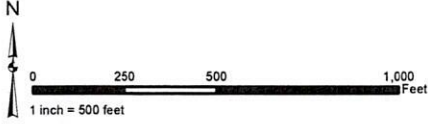
1
2
3
4
5
6
7
8
9
10
11
12
13
14
15
16
17
18
19
20
21
22
23
24

LANDSCAPING AND LIGHTING MAINTENANCE DISTRICT NO. 89-1 CONSOLIDATED

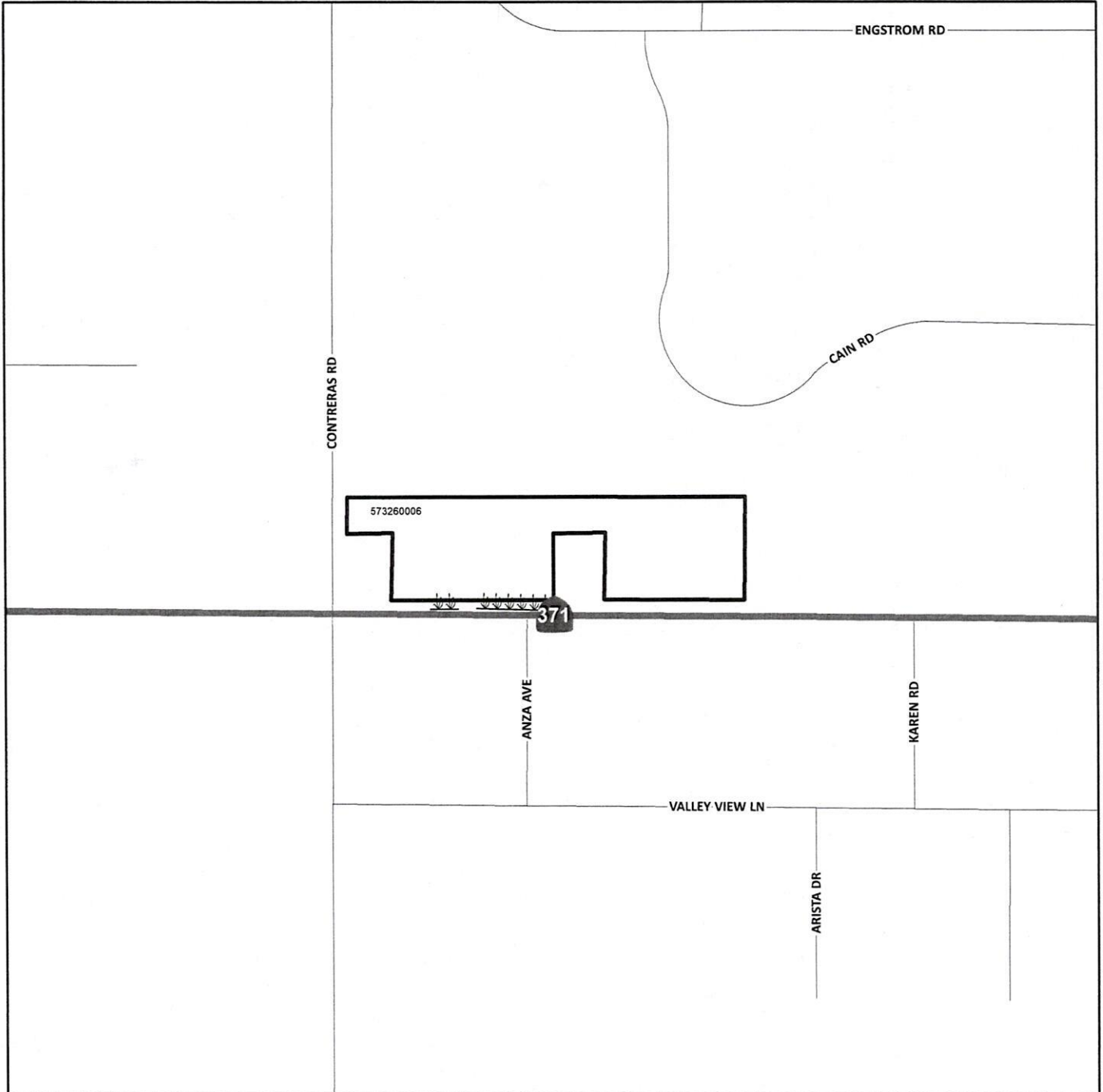
ZONE 213
PORTION(S) OF SECTION 16, T.7S., R.2E.
PLOT PLAN NO. 26320
1 PARCEL



The County of Riverside assumes no warranty or legal responsibility for the information contained on this map. Data and information represented on this map is subject to updates, modifications and may not be complete or appropriate for all purposes. County GIS and other sources should be queried for the most current information. Do not copy or resell this map. Printed by bhahn on 4/1/2020

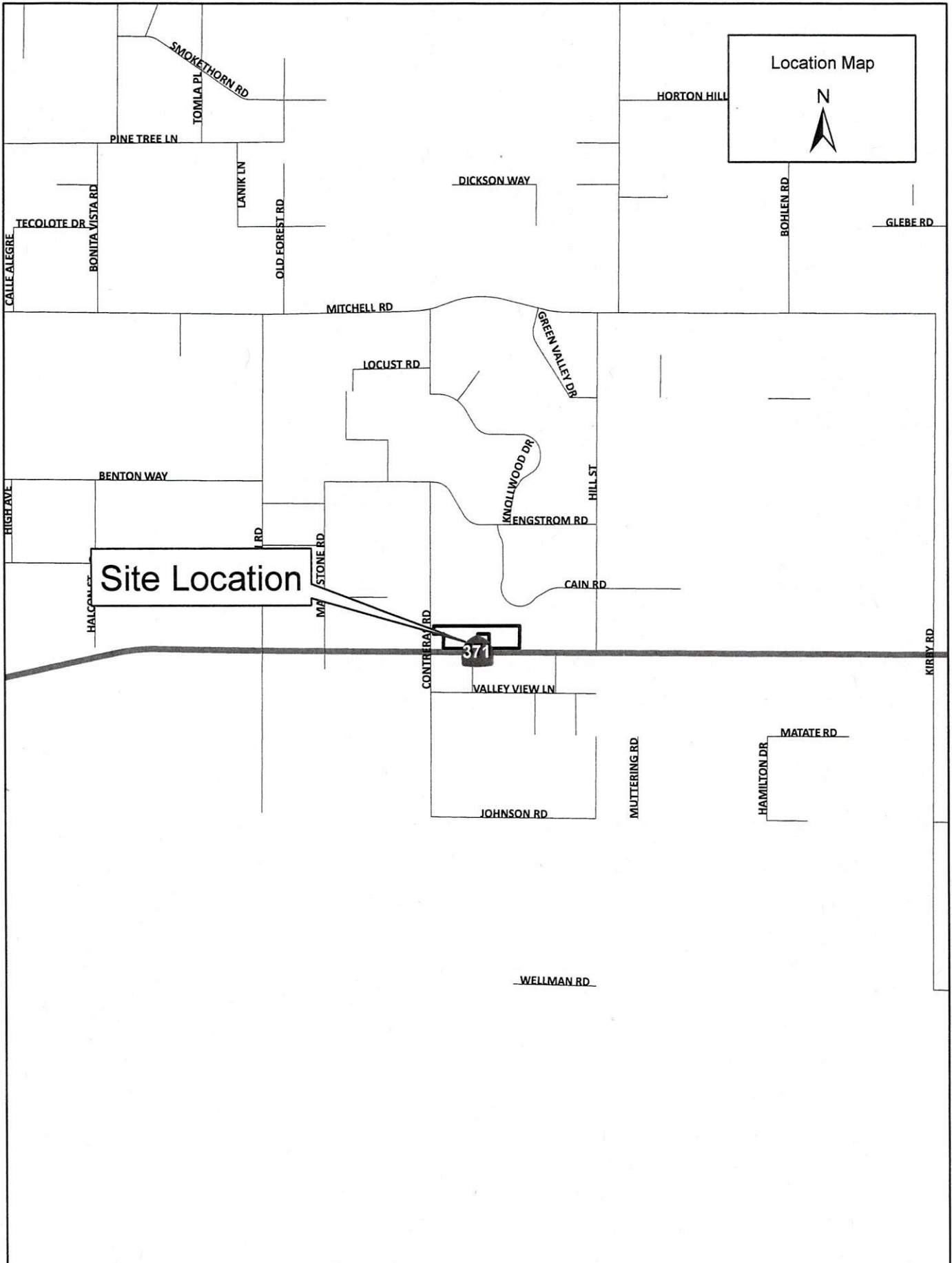


ASSESSMENT DIAGRAM



 DENOTES LANDSCAPED AND MAINTAINED PARKWAY

 DENOTES ZONE BOUNDARY



Site Location

Location Map

N

37