

SUBMITTAL TO THE BOARD OF SUPERVISORS
COUNTY OF RIVERSIDE, STATE OF CALIFORNIA



ITEM: 3.19
(ID # 15441)

MEETING DATE:
Tuesday, June 08, 2021

FROM : FIRE DEPARTMENT:

SUBJECT: FIRE DEPARTMENT: Hazardous Fire Area Closures in the Unincorporated Areas of Riverside County; Districts 3, 4, & 5; [\$0]

RECOMMENDED MOTION: That the Board of Supervisors approve closure of the Hazardous Fire Areas in the unincorporated area of Riverside County outlined in Exhibit A effective June 14, 2021, until such time as the County Fire Chief permits them to re-open.

ACTION:


Bill Weiser, Fire Department Chief 6/1/2021

MINUTES OF THE BOARD OF SUPERVISORS

On motion of Supervisor Washington, seconded by Supervisor Spiegel and duly carried by unanimous vote, IT WAS ORDERED that the above matter is approved as recommended.

Ayes: Jeffries, Spiegel, Washington, Perez, and Hewitt
Nays: None
Absent: None
Date: June 8, 2021
xc: Fire

Kecia R. Harper
Clerk of the Board

By: 
Deputy

**SUBMITTAL TO THE BOARD OF SUPERVISORS COUNTY OF RIVERSIDE,
STATE OF CALIFORNIA**

FINANCIAL DATA	Current Fiscal Year:	Next Fiscal Year:	Total Cost:	Ongoing Cost
COST	\$ 0	\$ 0	\$ 0	\$ 0
NET COUNTY COST	\$ 0	\$ 0	\$ 0	\$ 0
SOURCE OF FUNDS: N/A			Budget Adjustment: No	
			For Fiscal Year: 20/21	

C.E.O. RECOMMENDATION: Approve

BACKGROUND:

Summary

Riverside County Ordinance 787 Adopting the 2019 California Fire Code requires the Board of Supervisors approval for the closure of hazardous fire areas for more than fifteen (15) days. Due to the potential of damaging human caused fires, the County Fire Chief has determined these areas should be closed except on public roadways and on inhabited areas of private property within the closure areas. The potential for large damaging fires occurring this year may be enhanced by the extreme vegetation growth experienced throughout in Riverside County.

The Hazardous Fire Area closures shall become effective Monday, June 14, 2021, and remain in effect until the County Fire Chief determines that the fuel and weather conditions are safe for the public and the threat of wildfire is minimized.

Impact on Residents and Businesses

There may be a reduction of recreational activities in some areas due to the closures.

SUPPLEMENTAL:

Additional Fiscal Information

There is no fiscal impact with the closure of these areas.

EXHIBIT A – Attachment


Cheryl Williams 6/1/2021

EXHIBIT A

FIRE CLOSURE AREAS IN RIVERSIDE COUNTY

The Fire Closure areas in Riverside County are as follows:

North Mountain and Indian Canyon

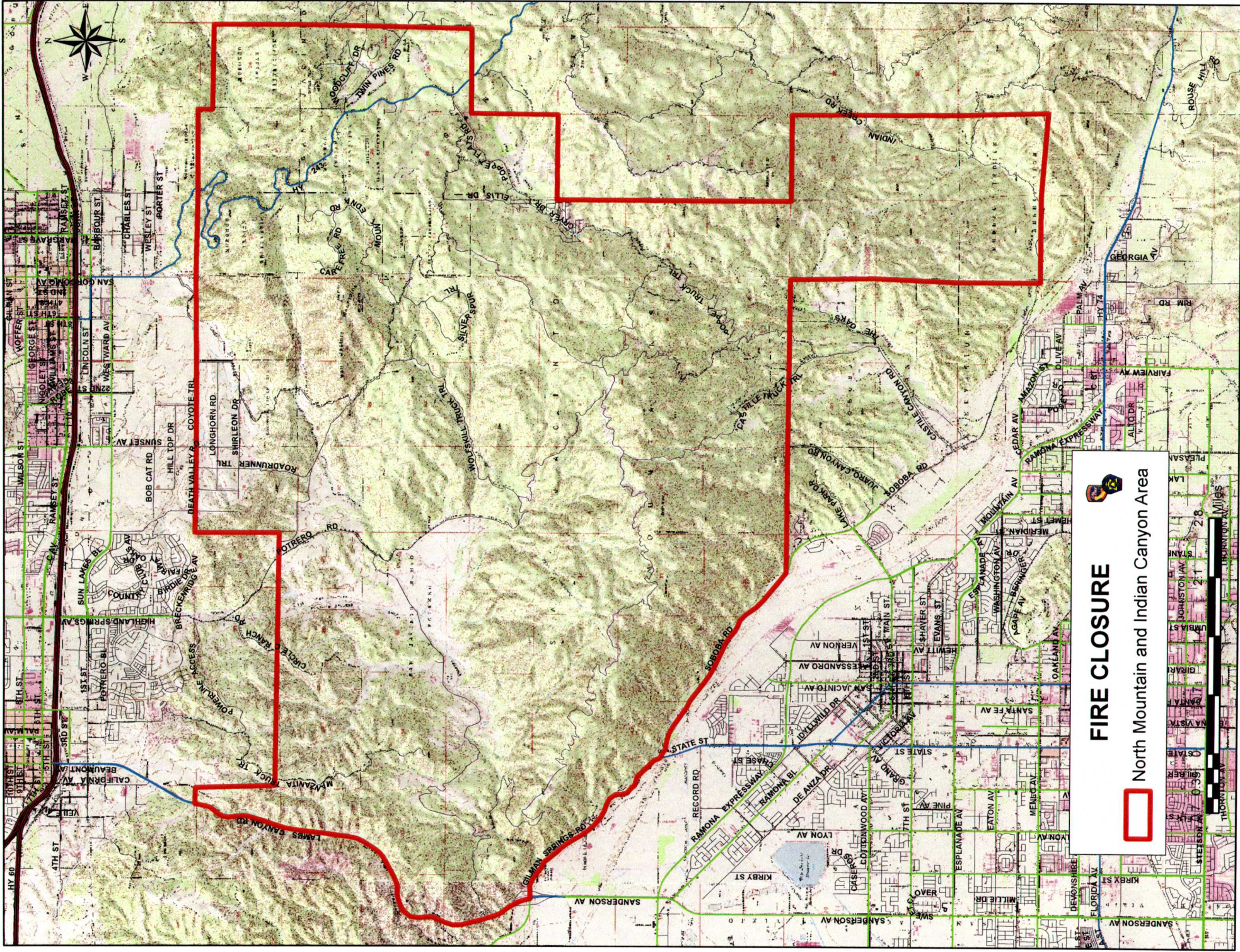
Whitewater Canyon

Ramona Bowl – Closed daily 12:00 pm to sunrise

Bautista Canyon

Steel Peak

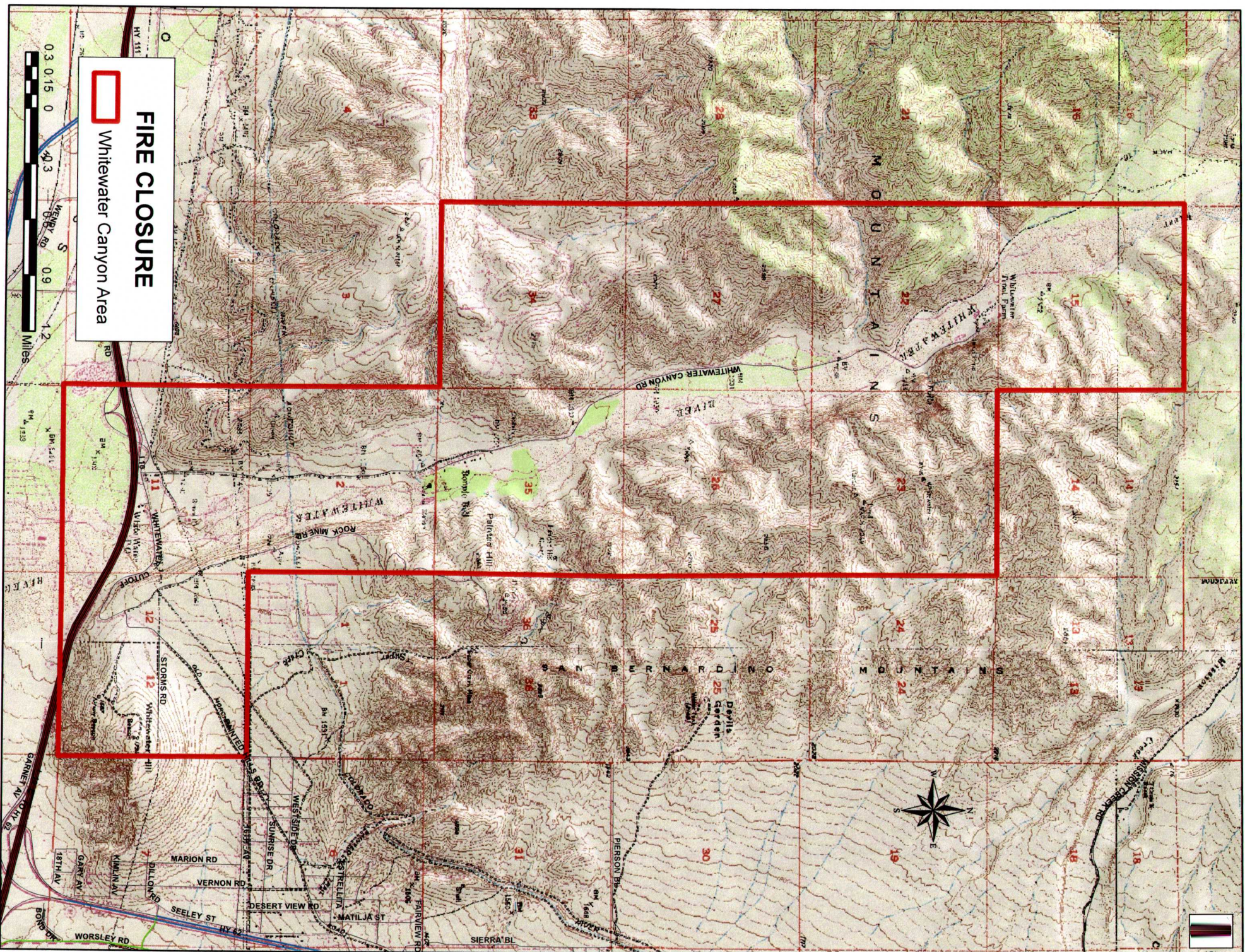
Eagle Canyon / Tin Mine Area

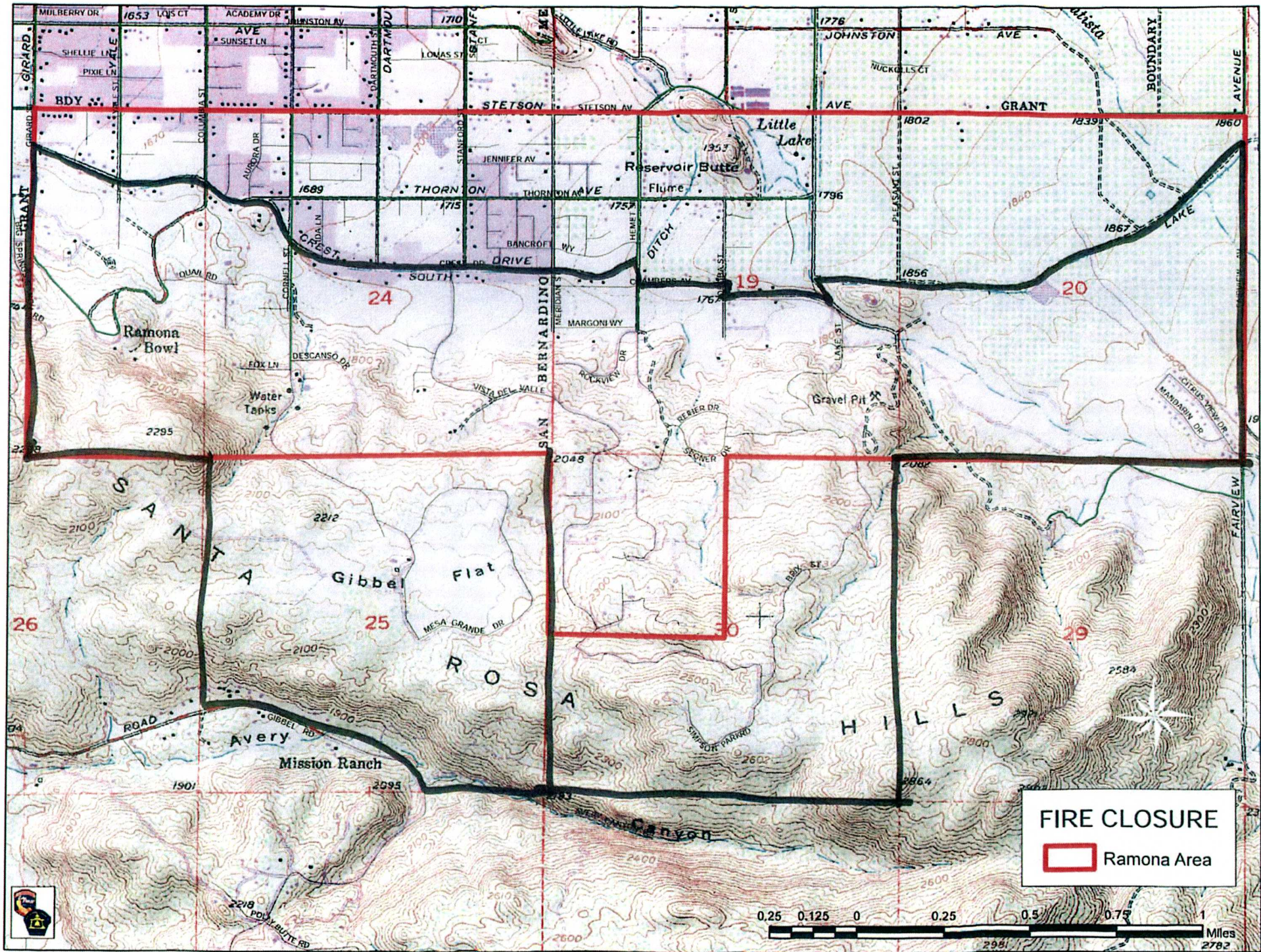


FIRE CLOSURE

North Mountain and Indian Canyon Area






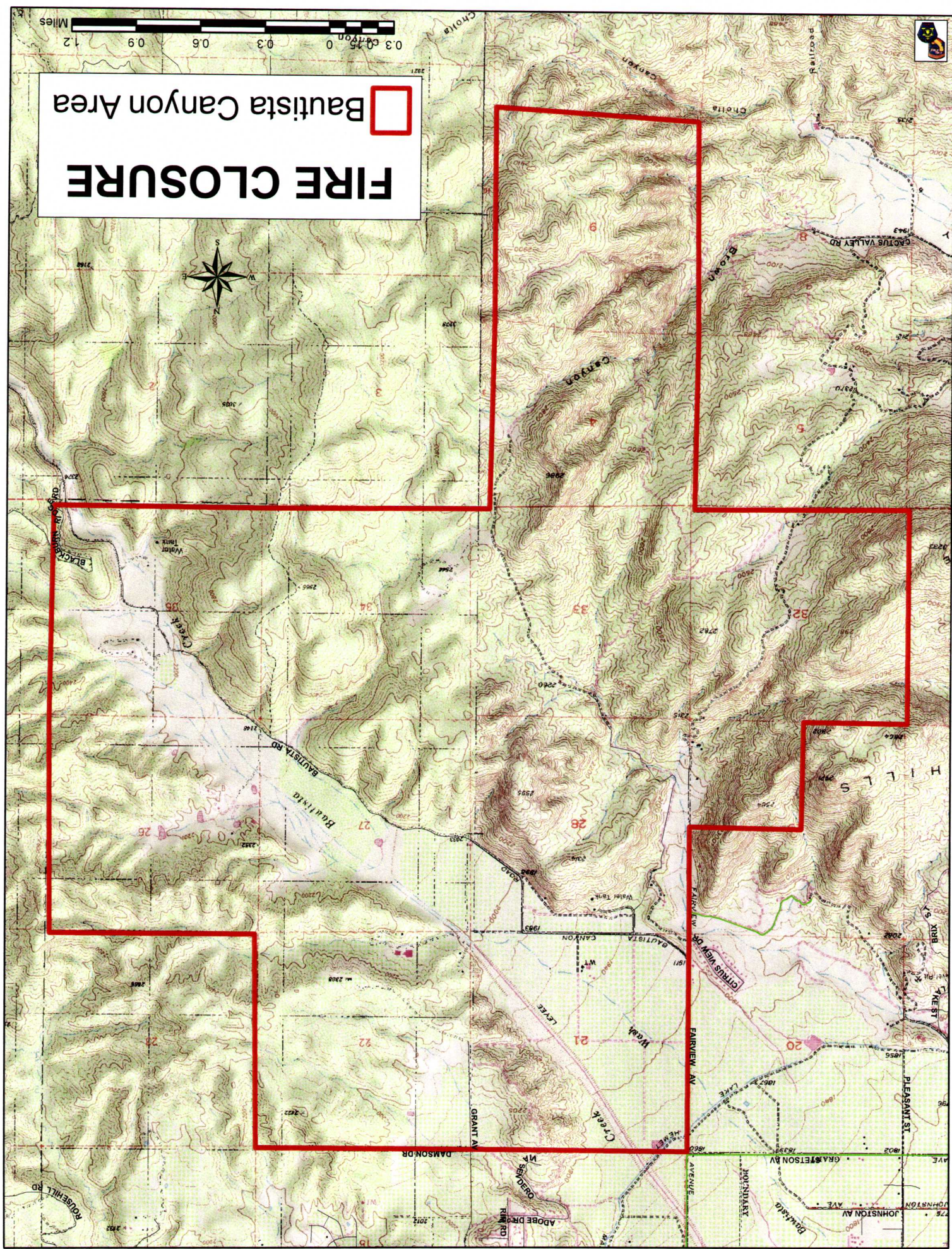


FIRE CLOSURE
 Ramona Area



FIRE CLOSURE

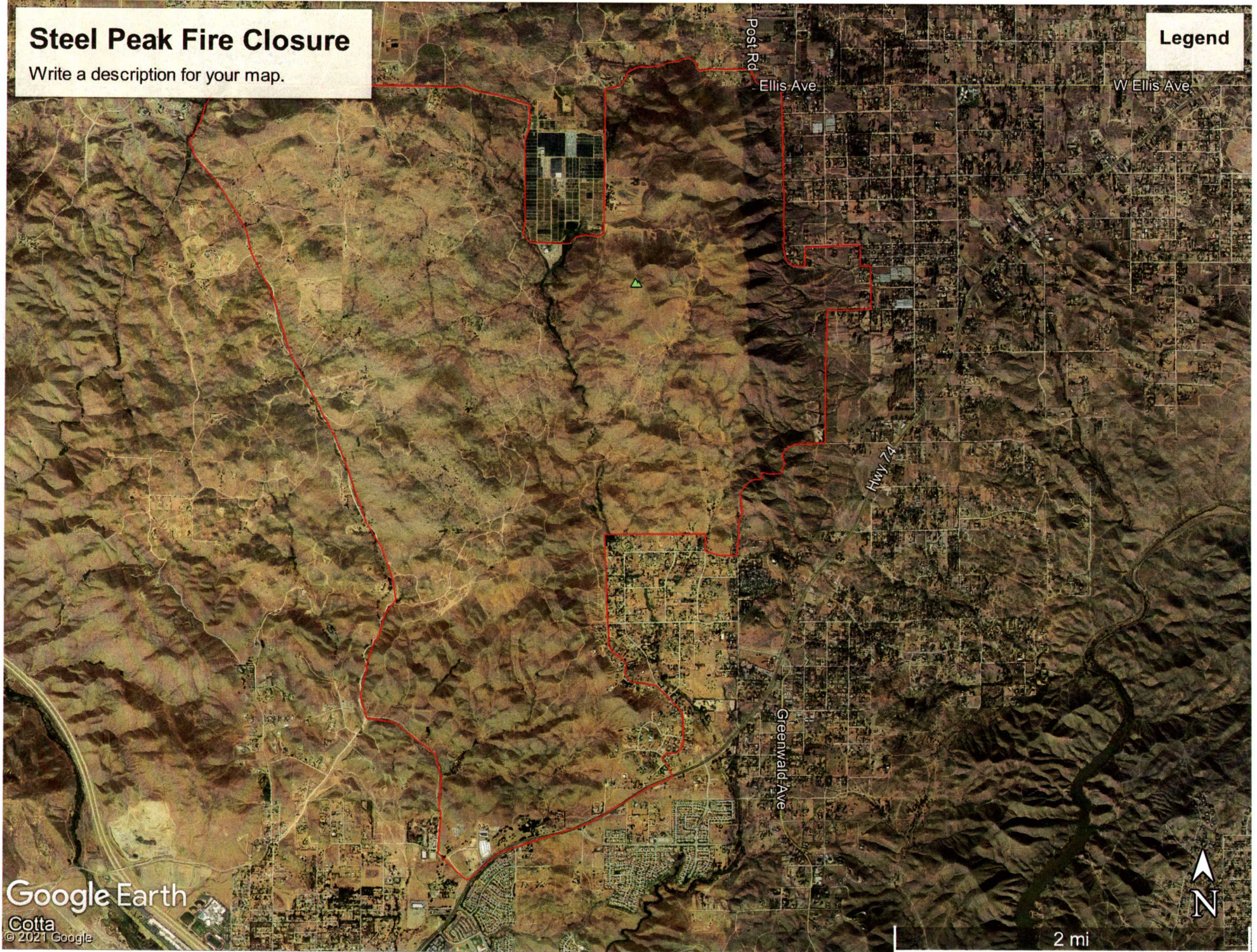
 Bautista Canyon Area



Steel Peak Fire Closure

Write a description for your map.

Legend



PCL XL error
Error: IllegalOperatorSequence
Operator: ReadImage
Position: 82170

EXHIBIT A

FIRE CLOSURE AREAS IN RIVERSIDE COUNTY

The Fire Closure areas in Riverside County are as follows:

North Mountain and Indian Canyon

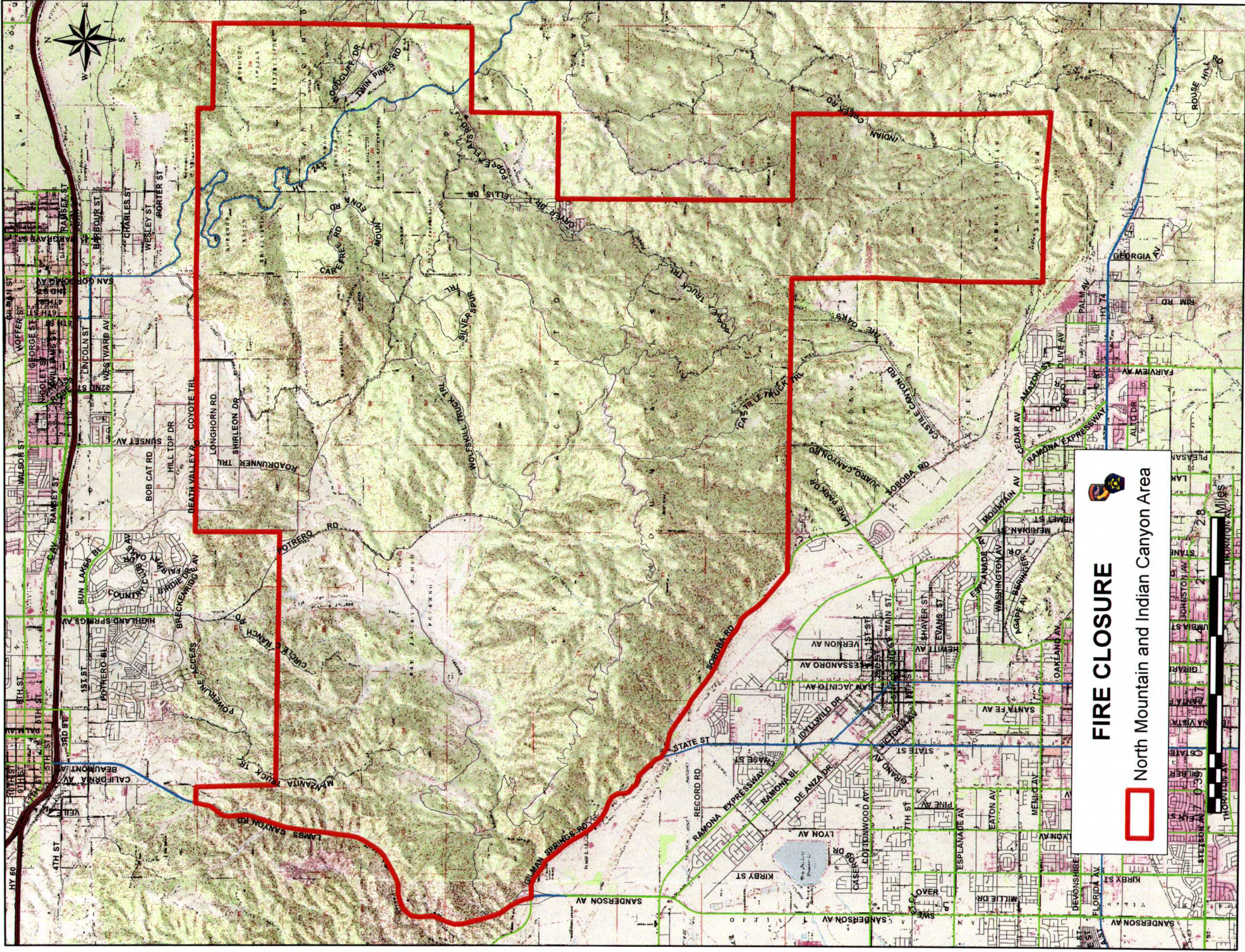
Whitewater Canyon

Ramona Bowl – Closed daily 12:00 pm to sunrise

Bautista Canyon

Steel Peak

Eagle Canyon / Tin Mine Area

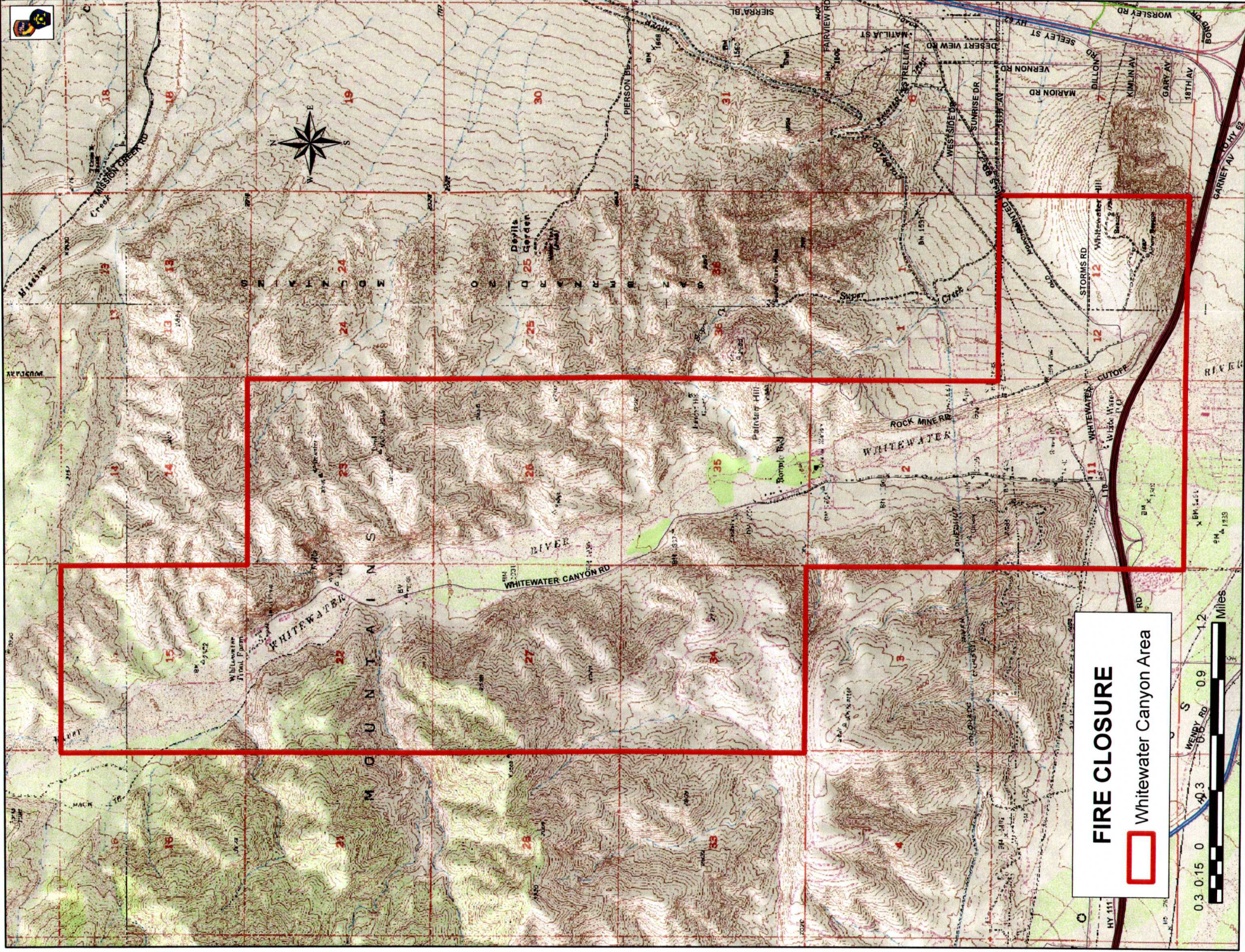


FIRE CLOSURE



North Mountain and Indian Canyon Area

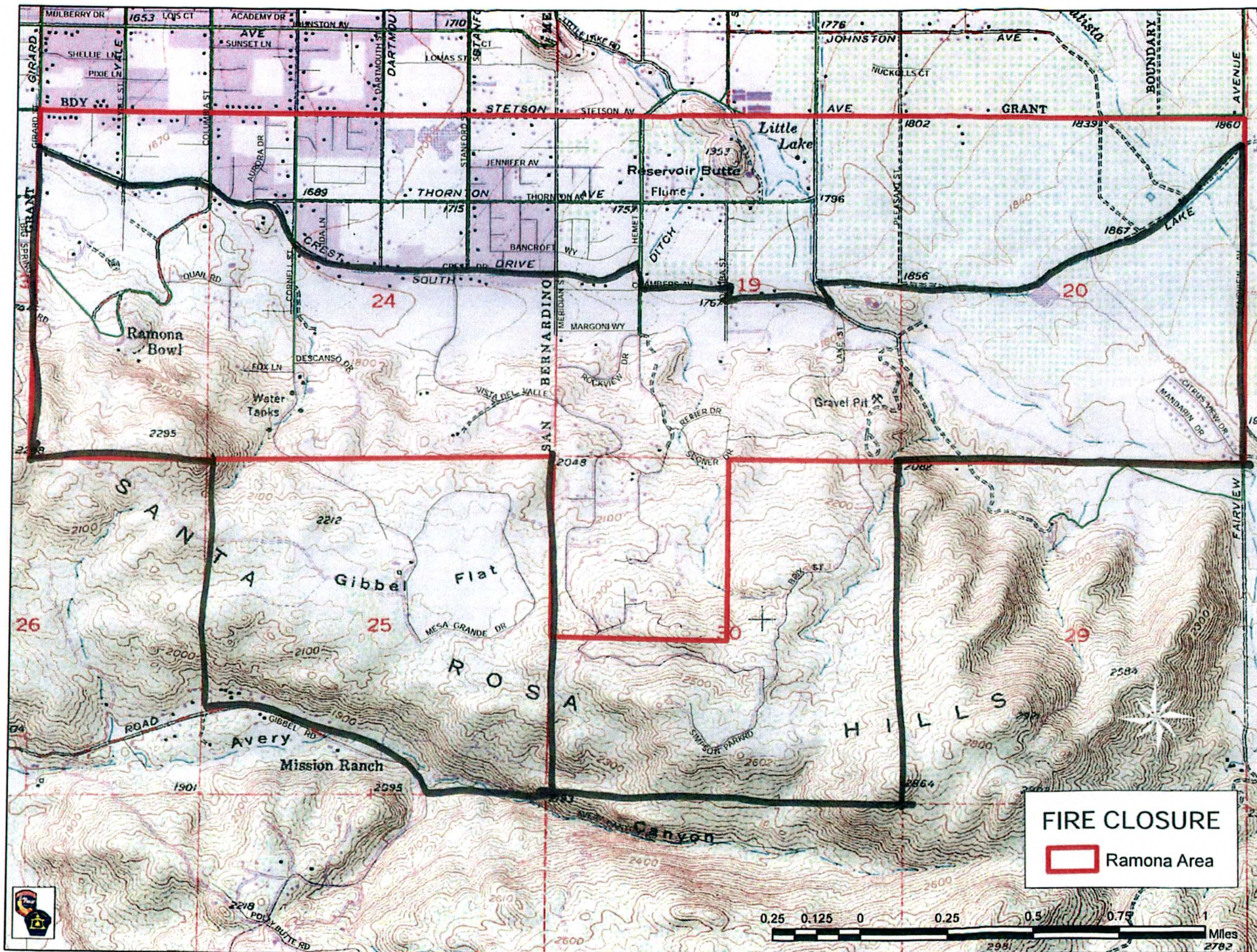




FIRE CLOSURE

 Whittewater Canyon Area



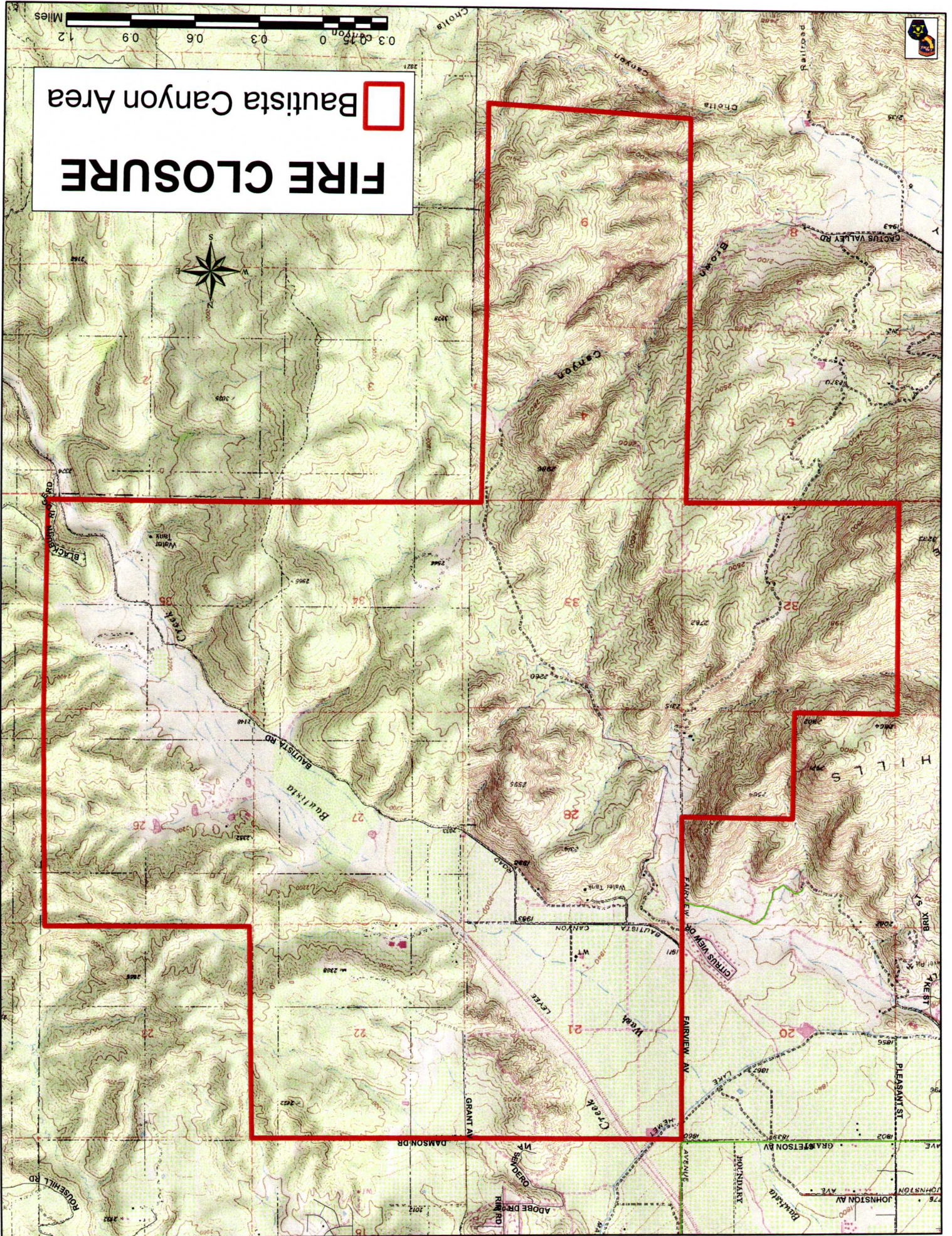




0 0.3 0.6 0.9 1.2 Miles

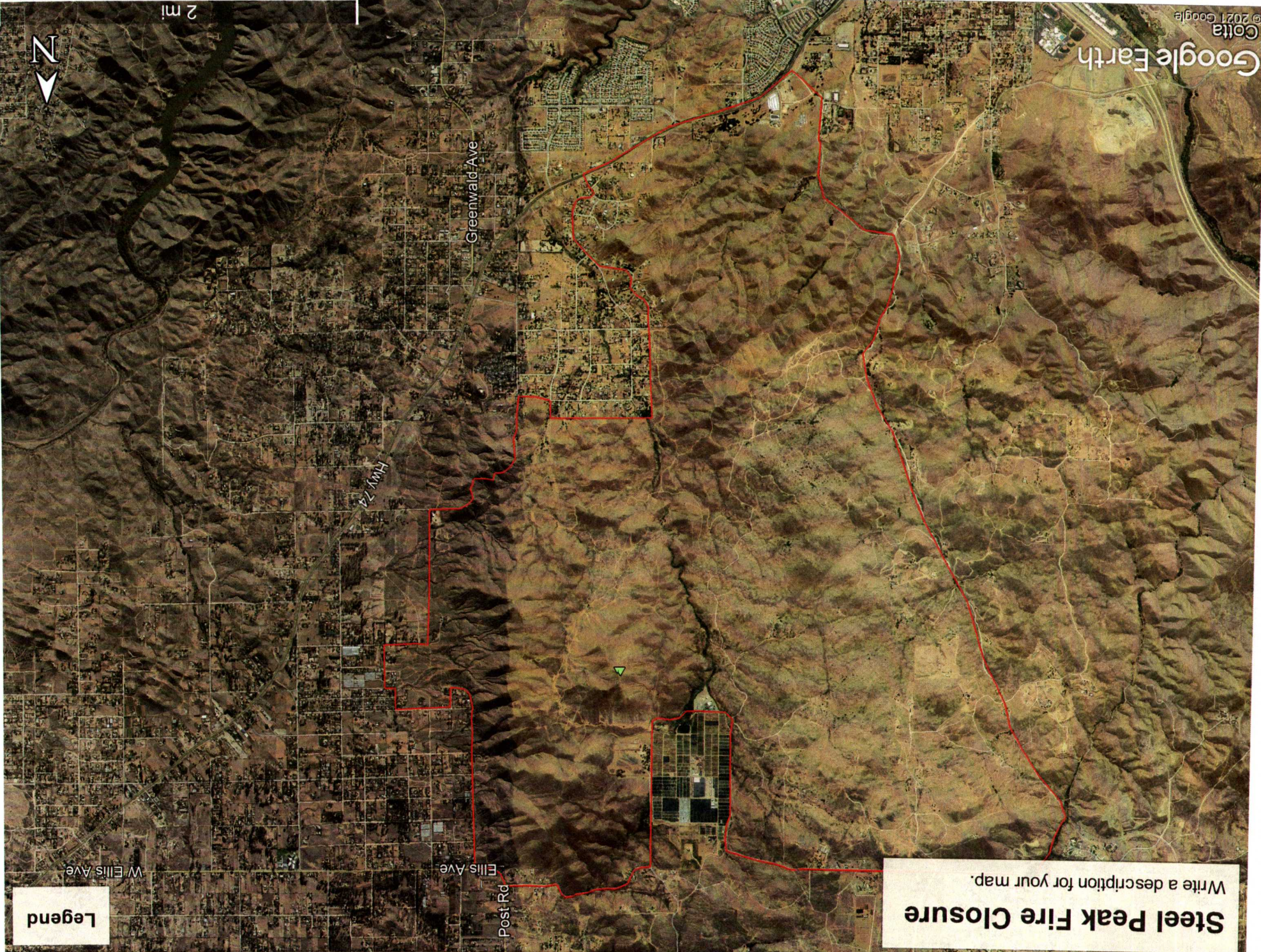
FIRE CLOSURE

Bautista Canyon Area



Steel Peak Fire Closure

Write a description for your map.




Legend

Eagle Canyon / Tin Mine

Write a description for your map.

Legend

 Eagle Cyn / Tin Mine Fire Closures

Google Earth

2 mi



