

**SUBMITTAL TO THE BOARD OF SUPERVISORS
COUNTY OF RIVERSIDE, STATE OF CALIFORNIA**



ITEM: 3.10
(ID # 18973)

MEETING DATE:
Tuesday, May 17, 2022

FROM : FIRE DEPARTMENT:

SUBJECT: FIRE DEPARTMENT: Hazardous Fire Area Closures in the Unincorporated Areas of Riverside County Effective May 23, 2022; Districts 1, 3, 4, & 5; [\$0]

RECOMMENDED MOTION: That the Board of Supervisors approve closure of the Hazardous Fire Areas in the unincorporated area of Riverside County outlined in Exhibit A effective May 23, 2022, until such time as the County Fire Chief permits them to be re-open.

ACTION:Policy

Bill Weiser

Bill Weiser, Fire Department Chief

5/2/2022

MINUTES OF THE BOARD OF SUPERVISORS

On motion of Supervisor Jeffries, seconded by Supervisor Perez and duly carried by unanimous vote, IT WAS ORDERED that the above matter is approved as recommended.

Ayes: Jeffries, Spiegel, Washington, Perez and Hewitt
Nays: None
Absent: None
Date: May 17, 2022
xc: Fire

Kecia R. Harper
Clerk of the Board

By: *[Signature]*
Deputy

**SUBMITTAL TO THE BOARD OF SUPERVISORS COUNTY OF RIVERSIDE,
STATE OF CALIFORNIA**

FINANCIAL DATA	Current Fiscal Year:	Next Fiscal Year:	Total Cost:	Ongoing Cost
COST	\$ 0	\$ 0	\$ 0	\$ 0
NET COUNTY COST	\$ 0	\$ 0	\$ 0	\$ 0
SOURCE OF FUNDS: N/A			Budget Adjustment:	No
			For Fiscal Year:	21/22

C.E.O. RECOMMENDATION: Approve

BACKGROUND:

Summary

Riverside County Ordinance 787 Adopting the 2019 California Fire Code requires the Board of Supervisors approval for the closure of hazardous fire areas for more than fifteen (15) days. Due to the potential of damaging, human-caused fires, the County Fire Chief has determined these areas should be closed except on public roadways and on inhabited areas of private property within the closure areas. The areas outlined are the same as the previous year. The potential for large, damaging fires occurring this year may be enhanced by the extreme vegetation growth experienced throughout Riverside County.

The Hazardous Fire Area closures shall become effective Monday, May 23, 2022, and remain in effect until the County Fire Chief determines that the fuel and weather conditions are safe for the public and the threat of wildfire is minimized.

Impact on Residents and Businesses

There may be a reduction of recreational activities in some areas due to the closures.

SUPPLEMENTAL:

Additional Fiscal Information

There is no fiscal impact with the closure of these areas.

EXHIBIT A – ATTACHMENT

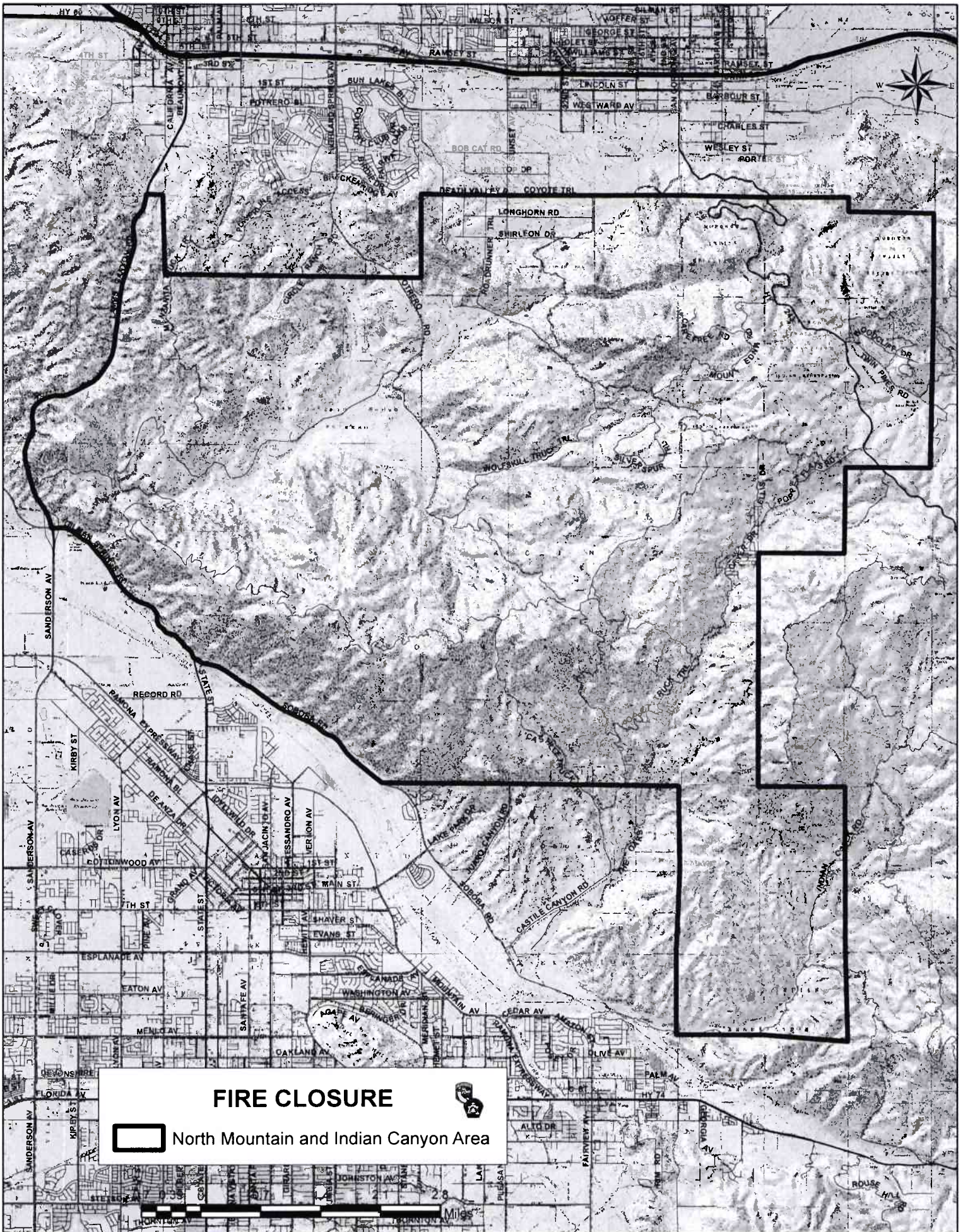

 Rebecca S Cortez, Principal Management Analyst 5/3/2022

EXHIBIT A

FIRE CLOSURE AREAS IN RIVERSIDE COUNTY


The Fire Closure areas in Riverside County are as follows:

North Mountain and Indian Canyon
Whitewater Canyon
Ramona Bowl – Closed daily 12:00 pm to sunrise
Bautista Canyon
Steel Peak
Eagle Canyon / Tin Mine Area

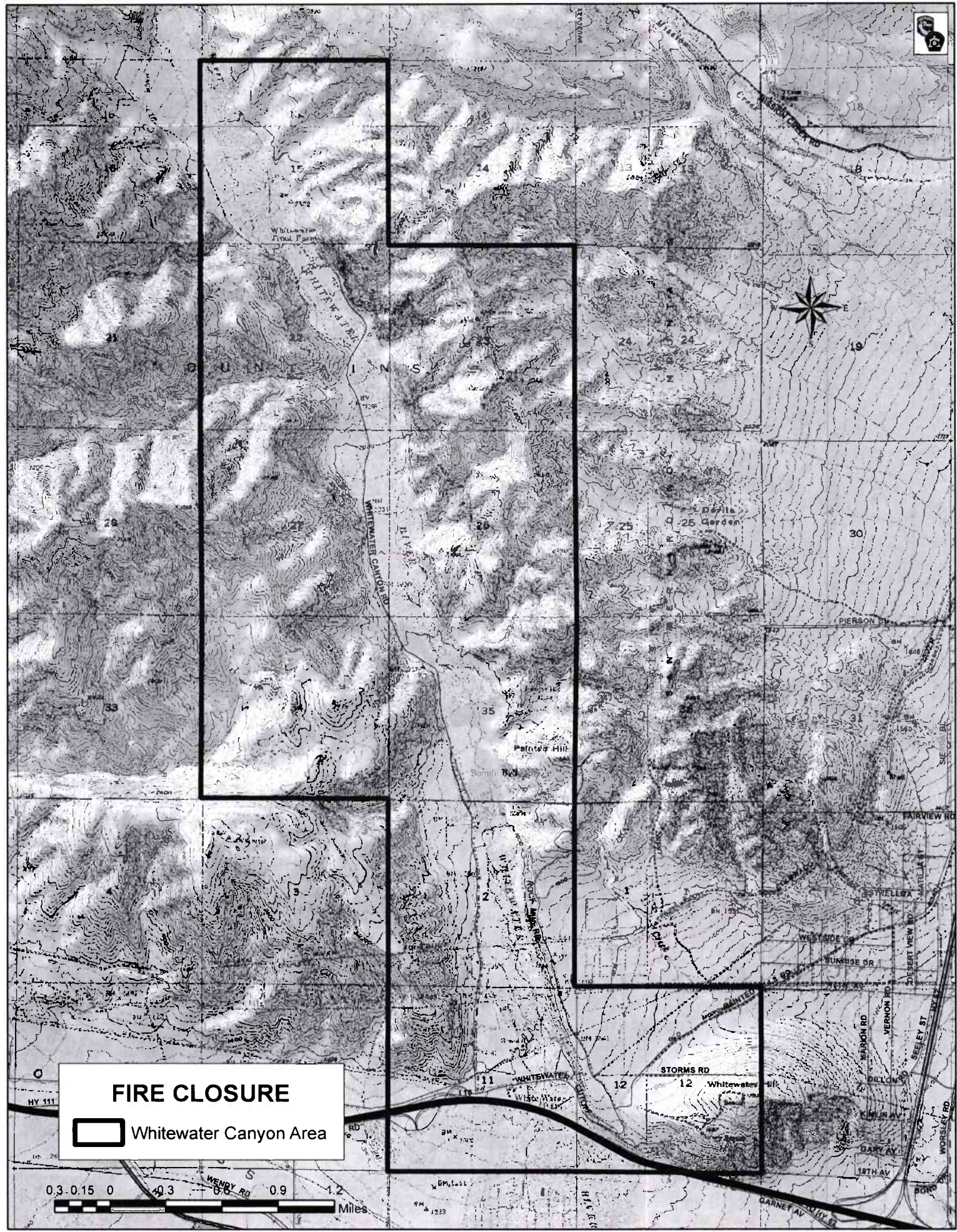


FIRE CLOSURE



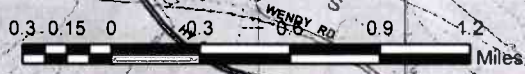
 North Mountain and Indian Canyon Area

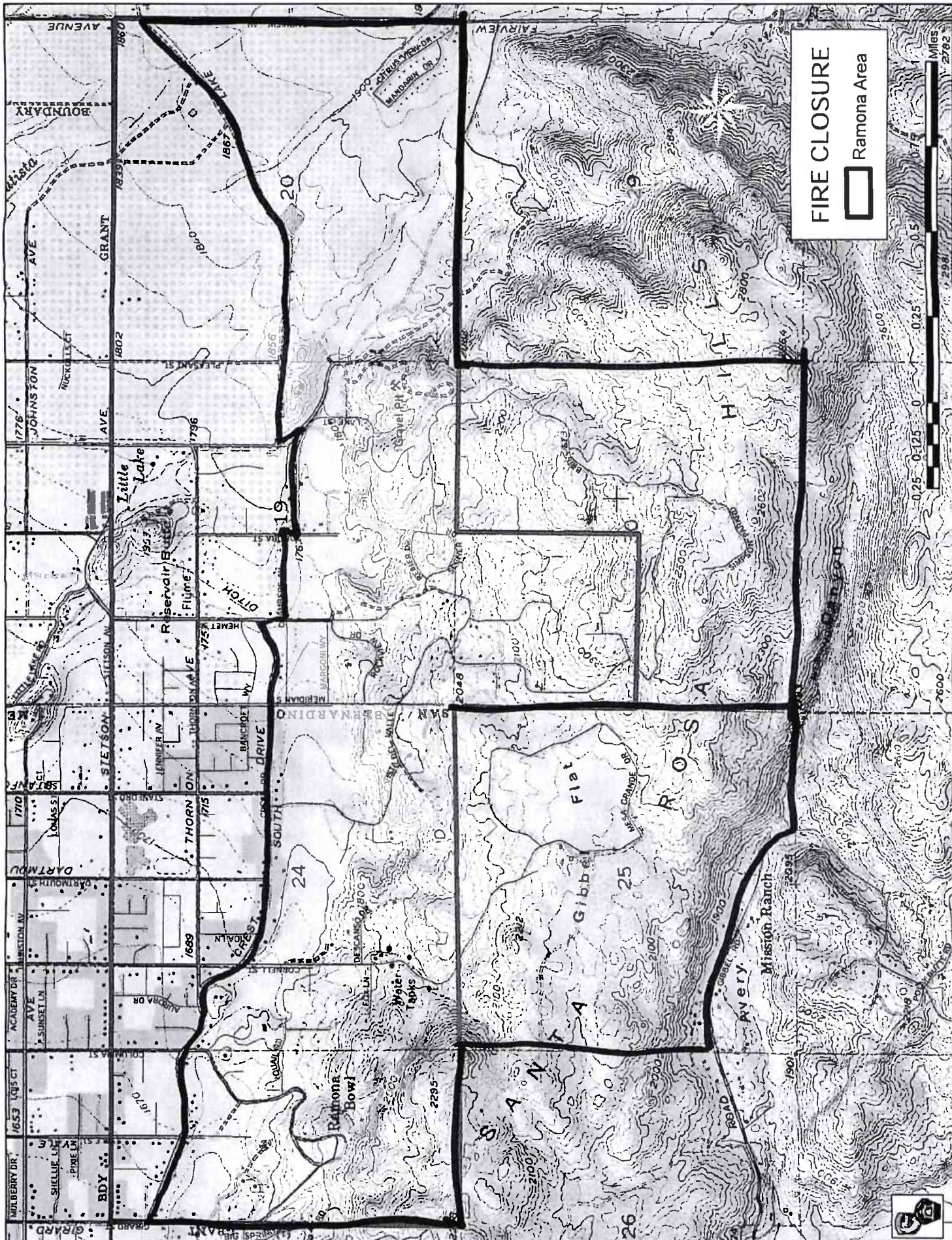
2.8 Miles



FIRE CLOSURE

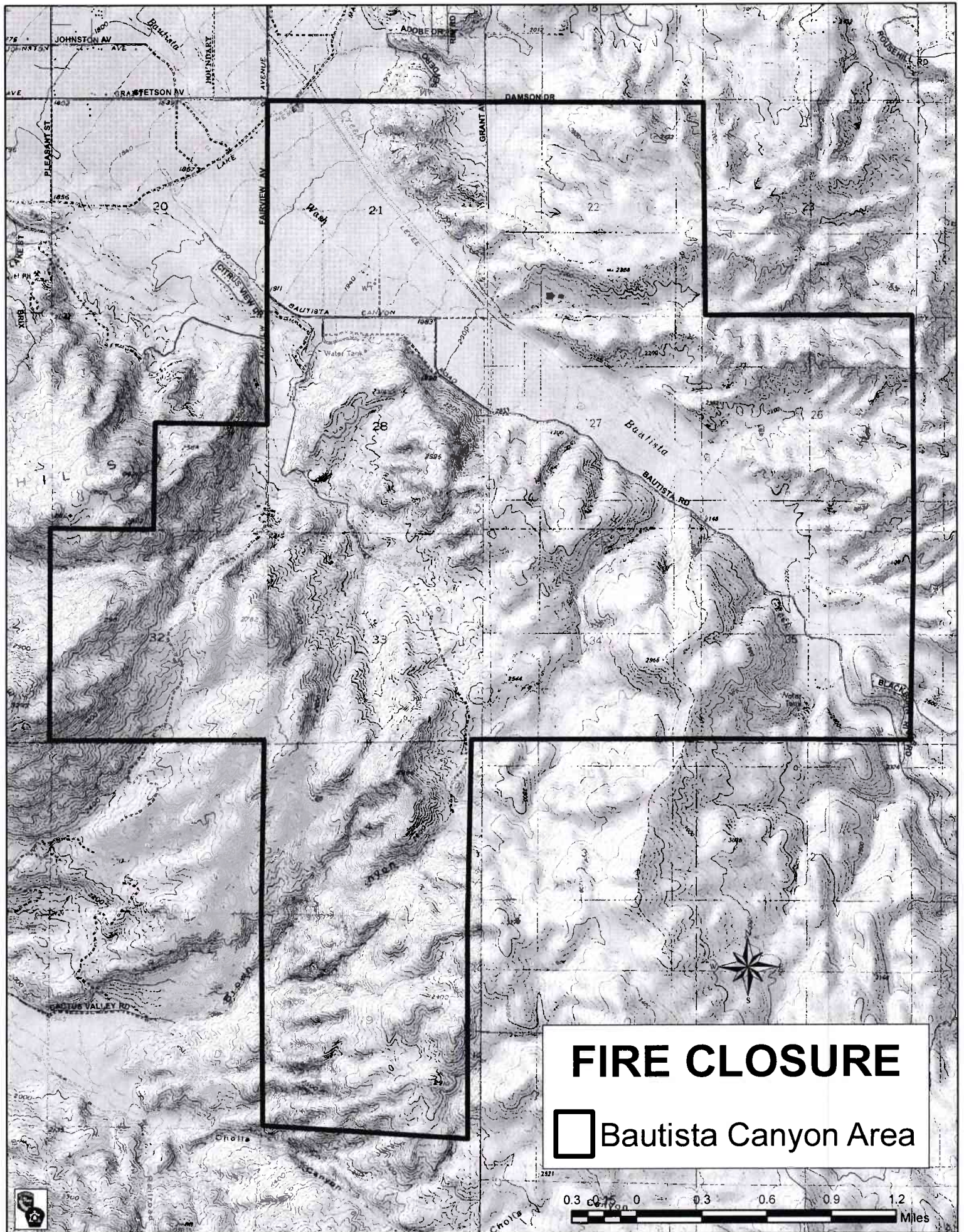
 Whitewater Canyon Area





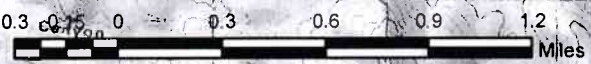
FIRE CLOSURE
□ Ramona Area





FIRE CLOSURE

 Bautista Canyon Area



Steel Peak Fire Closure

Write a description for your map.

Legend



Google Earth

© 2021 Google

2 mi

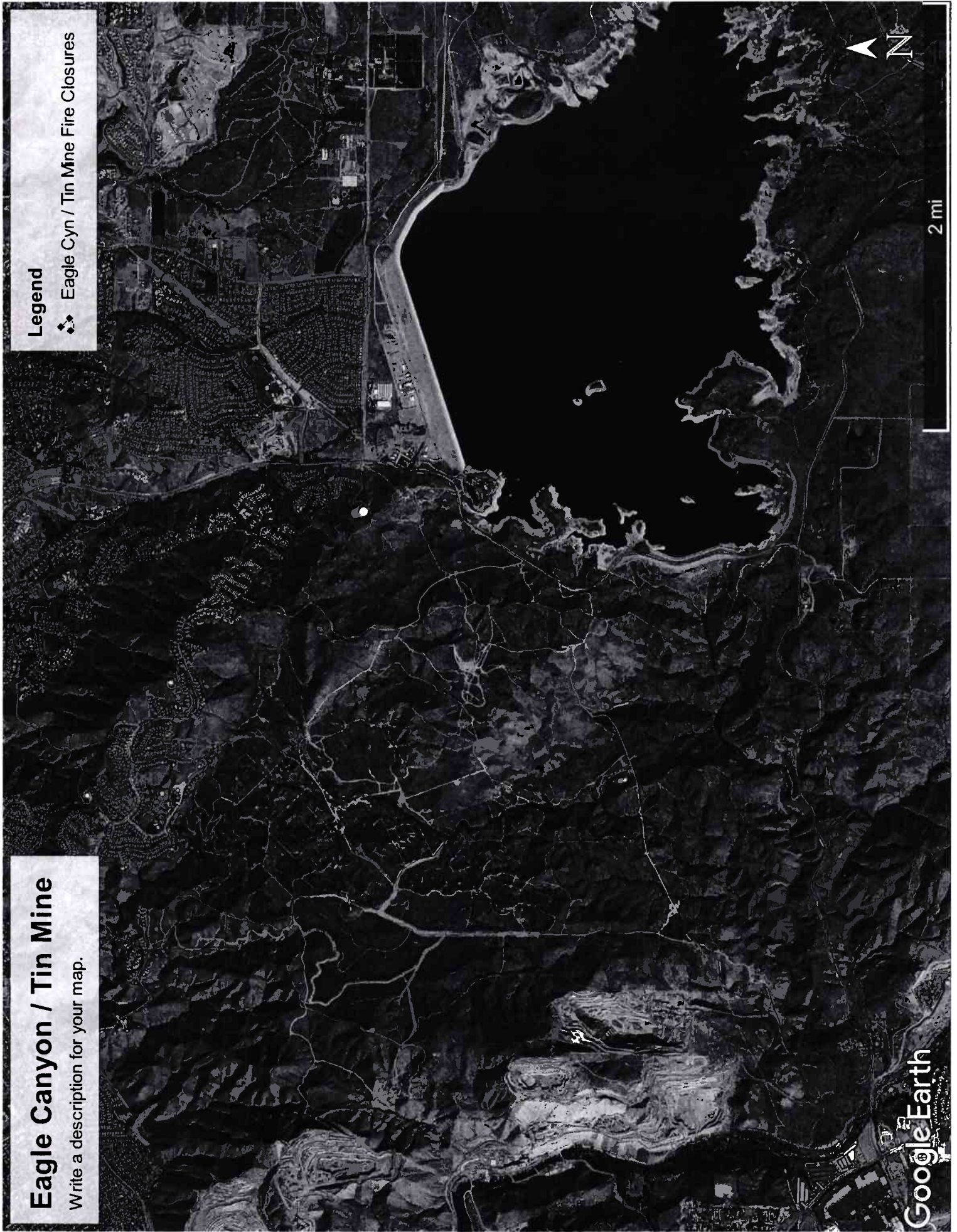


Eagle Canyon / Tin Mine

Write a description for your map.

Legend

- ◆ Eagle Cyn / Tin Mine Fire Closures



2 mi

Google Earth