

SUBMITTAL TO THE BOARD OF SUPERVISORS  
COUNTY OF RIVERSIDE, STATE OF CALIFORNIA



ITEM: 2.7  
(ID # 21496)

MEETING DATE:  
Tuesday, April 04, 2023

FROM : TLMA-TRANSPORTATION:

SUBJECT: TRANSPORTATION AND LAND MANAGEMENT AGENCY/TRANSPORTATION:  
Receive and File the Progress Update for the Gilman Springs Road Safety Improvement  
Corridor projects in the Community of Hemet. District 5. [\$0]

RECOMMENDED MOTION: That the Board of Supervisors:

1. Receive and File the Progress Update for the Gilman Springs Road Safety Improvement  
Corridor projects in the Community of Hemet.

ACTION: Consent

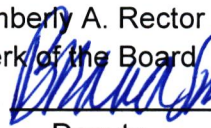
  
Mark Lancaster, Director of Transportation 3/24/2023

---

MINUTES OF THE BOARD OF SUPERVISORS

On motion of Supervisor Spiegel, seconded by Supervisor Perez and duly carried by  
unanimous vote, IT WAS ORDERED that the above matter is received and filed as  
recommended.

Ayes: Jeffries, Spiegel, Washington, Perez, and Gutierrez  
Nays: None  
Absent: None  
Date: April 4, 2023  
xc: Trans.

Kimberly A. Rector  
Clerk of the Board  
By:   
Deputy

**SUBMITTAL TO THE BOARD OF SUPERVISORS COUNTY OF RIVERSIDE,  
STATE OF CALIFORNIA**

<b>FINANCIAL DATA</b>	<b>Current Fiscal Year:</b>	<b>Next Fiscal Year:</b>	<b>Total Cost:</b>	<b>Ongoing Cost</b>
<b>COST</b>	\$ 0	\$ 0	\$ 0	\$ 0
<b>NET COUNTY COST</b>	\$ 0	\$ 0	\$ 0	\$ 0
<b>SOURCE OF FUNDS:</b> N/A			<b>Budget Adjustment:</b> N/A	
			<b>For Fiscal Year:</b> 22/23	

**C.E.O. RECOMMENDATION:** Approve

**BACKGROUND:**

**Summary**

Gilman Springs Road is a vital commuter route that connects Western Riverside County and the Cities of San Jacinto and Hemet. Gilman Springs Road is also the main route to the Soboba Casino Resort, Mount San Jacinto College, and Golden Era Productions which attracts visitors to the region.

Gilman Springs Road is currently classified as an Arterial Highway between State Route 60 (SR-60) and State Route 79 (SR-79), a 10-mile long segment, and a Secondary Highway between SR-79 and State Street, a 2.5 mile long segment. The 12.5-mile-long roadway is currently a 2-lane road with one lane in each direction through the majority of the road length.

Over the past 10 years the average daily traffic using this route has significantly increased from approximately 10,000 vehicles per day in 2012, to over 25,000 vehicles in 2020. With the expansive growth in the area and the increase in traffic volume, collisions have increased over the years. The County took a proactive approach in 2013 and created the Gilman Springs Road Safety Improvement Corridor, an eight-phase approach to improving the safety on Gilman Springs Road. The Safety Improvement Corridor has incrementally improved safety on Gilman Springs Road by realigning curves, placing additional signing, striping, installation of edge line rumble stripes, as well as the construction of a painted median with centerline delineators and rumble strips. The County is currently working on Phase 6 and will begin Phase 7 shortly which will provide a 4'-wide painted median as well as 5'-wide paved outside shoulders between SR-60 and SR-79. Phase 8 has also begun, which will replace the existing bridge at Potrero Creek and realign curves on Gilman Springs Road in the vicinity of the bridge.

To date, the County has completed approximately \$18 million in improvements as part of the Gilman Springs Safety Improvement Corridor with the first five phases and intends to invest an additional \$44 million in phases six, seven, and eight.

In addition to the Gilman Springs Safety Improvement Corridor projects, the County has applied for Office of Traffic Safety grants for additional California Highway Patrol enforcement and educational campaigns throughout the corridor. The County Transportation Department has also collaborated with the Department of Public Health and developed strategies for additional

**SUBMITTAL TO THE BOARD OF SUPERVISORS COUNTY OF RIVERSIDE,  
STATE OF CALIFORNIA**

safety improvements to be incorporated into the Safety Improvement Corridor or items to be handled by Transportation Maintenance Staff.

**Impact on Residents and Businesses**

Enhance safety along Gilman Springs Road.

**Additional Fiscal Information**

The County has spent \$18 million in completed improvements along this corridor as part of the Gilman Springs Road Safety Improvement Corridor and has allocated an additional \$44 million.

**Contract History and Price Reasonableness**

Not Applicable

**ATTACHMENT:** Gillman Springs Road BOS Presentation

  
\_\_\_\_\_  
Jason Farin, Principal Management Analyst      3/28/2023



# GILMAN SPRINGS ROAD

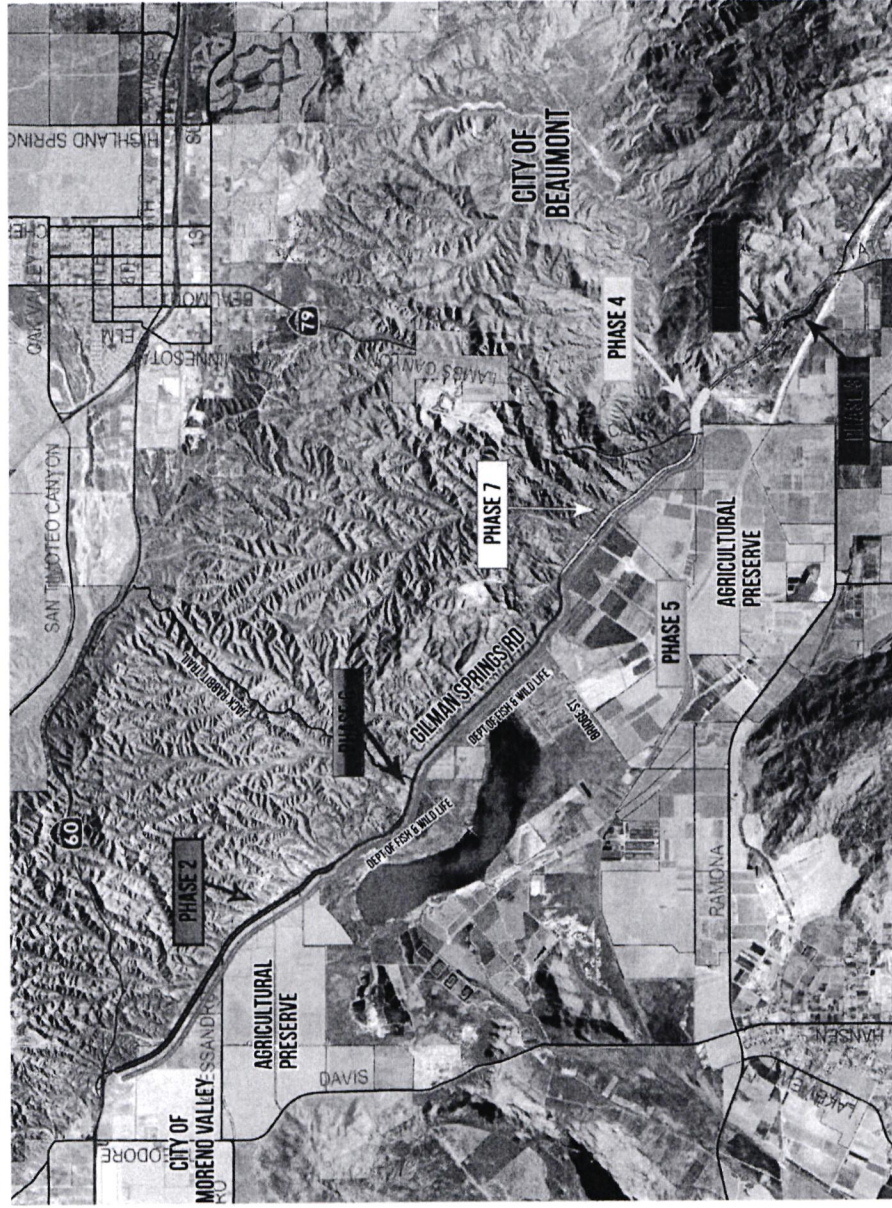




RIVERSIDE COUNTY TRANSPORTATION DEPARTMENT

# GILMAN SPRINGS ROAD

SAFETY IMPROVEMENT CORRIDOR



**PHASE 1 - PAVEMENT REHABILITATION** **COMPLETED**  
 Improvements: pavement grinding and overlay, rolled curb, median curb, and safety enhancements, including centerline rumble strips between Sublette Road and State Route 79, and shoulder rumble strips and rumble strips between State Route 79 and Sublette Road.  
 Project Cost: \$2.4 Million Completed: June 2013.

**PHASE 2 - ROADWAY IMPROVEMENTS** **COMPLETED**  
 1500 feet south of State Route 60 to 1.7 miles south of Alessandro Boulevard  
 Improvements: pavement rehabilitation, shoulder widening and realignment of several curves, construction of a left turn pocket at the intersection of Gilman Springs Road and Alessandro Boulevard, construction of a southbound passing lane starting southerly of Alessandro Boulevard. A portion of the project is being done in cooperation with the City of Beaumont.  
 Project Cost: \$6.3 Million Completed: December 2013.

**PHASE 3 - CURVE REALIGNMENT** **COMPLETED**  
 1000 feet north of Sublette Road (west) to Sublette Road (east)  
 Improvements: new asphalt pavement, removal of old asphalt pavement (old alignment), roadway signs and markings, reflective pavement markers, and centerline rumble strips. Traffic signal improvements will be completed at the intersection of Gilman Springs Rd (State St) & Sublette Rd.  
 Project Cost: \$3.2 Million Completed: December 2016.

**PHASE 4 - TRAFFIC SIGNAL IMPROVEMENTS** **COMPLETED**  
 State Route 79 to 1500 feet south of State Route 79  
 Proposed Improvements: pavement widening to accommodate 2 through lanes of travel in each direction between the on/off ramps, resurfacing from northbound ramps to 1500' south of SR-79, and traffic signal installation for northbound on and off ramps.  
 Project Cost: \$945,000 Completed: November 2018

**PHASE 5 - PAVEMENT RESURFACING & SAFETY ENHANCEMENTS** **COMPLETED**  
 1 mile South of State Route 60 to State Route 79  
 Improvements: Rehabilitate deteriorated pavement, installation on centerline and edge line rumble strips, repaint centerline with 2' painted median and installation of centerline channelizers.  
 Project Cost: \$5 Million Completed: November 2019

**PHASE 6 - SHOULDER WIDENING & PASSING LANE**  
 1.7 miles South of Alessandro Boulevard to 1 mile south of Bridge Street  
 Proposed Improvements: pavement widening to accommodate 4' painted median with centerline rumble strips, 6' paved shoulders, providing approximately 1 mile of Northbound passing lane, extending existing culverts, and regrading shoulders and slope edges.  
 Project Cost: TBD Anticipated Construction Start: Mid 2024

**PHASE 7 - SHOULDER WIDENING & PASSING LANE**  
 1 mile south of Bridge Street to State Route 79  
 Proposed Improvements: pavement widening to accommodate 4' painted median with centerline rumble strips, 6' paved shoulders, providing approximately 3/4 mile of Southbound passing lane, extending existing culverts, and regrading shoulders and slope edges.  
 Project Cost: TBD Anticipated Construction Start: TBD



# Phase 1 From Soboba Rd to SR-79



- Project was completed in July 2013
- The roadway was rehabilitated to provide a smooth roadway
- The project included the following safety improvements
  - Placement of new rolled curb and edgeline rumble strips to alert drivers before exiting the traveled way
  - Placement of median curb, delineators, and centerline rumble strips to alert drivers before crossing over into oncoming traffic

## Phase 2

From ¼ mile South  
of SR-60 to 1-3/4  
miles South of  
Alessandro Blvd



- The project was completed in December 2013
- The roadway was rehabilitated to provide a smooth roadway
- The project included the following safety improvements
  - Realigning several curves for additional decision and stopping sight distance
  - Widening existing shoulders to allow vehicles to safely pull off the roadway
  - Constructed northbound left turn pocket at Alessandro Blvd so that through traffic would not be hindered by vehicles stopping to turn left
  - Constructed a southbound passing lane to improve traffic flow



# Phase 3

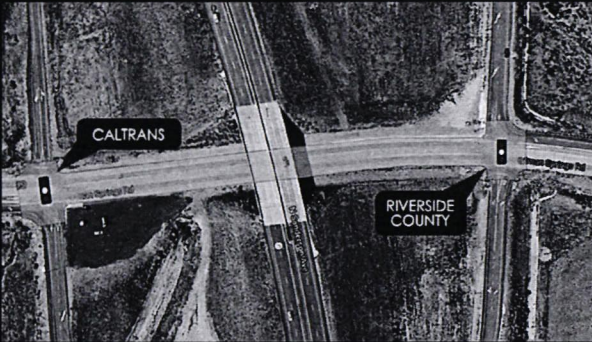
## From 1,000 North of Sublette Rd (West) to Sublette Road (East)



- The project was completed in October 2018
- The roadway was realigned and reconstructed
- The project included the following safety improvements
  - Realigning several curves for additional sight distance
  - Installations of new road signs and markings
  - Installation of centerline rumble strips to alert drivers before crossing centerline
  - Installation of new traffic signal and intersection improvements at Gilman Springs Rd and Soboba Rd



# Phase 4 At Highway 79 Off and ON Ramps



- The project was completed in November 2018
- The roadway was reconstructed and widened with cooperation from Caltrans
- The project included the following safety improvements
  - Roadway was widened to accommodate two lanes in each direction between On and Off Ramps
  - Installation of traffic signals at On and Off Ramp intersections

# Phase 5 From 1 mile South of SR-60 to SR-79



- The project was completed in November 2019
- The roadway was rehabilitated
- The project included the following safety improvements
  - Completed edgeline and centerline rumble stripes through project limits
  - Installation of 2' painted median
  - Installation of centerline delineators
  - Intersection widening and installation of Traffic Signal at Bridge St



# Phase 6

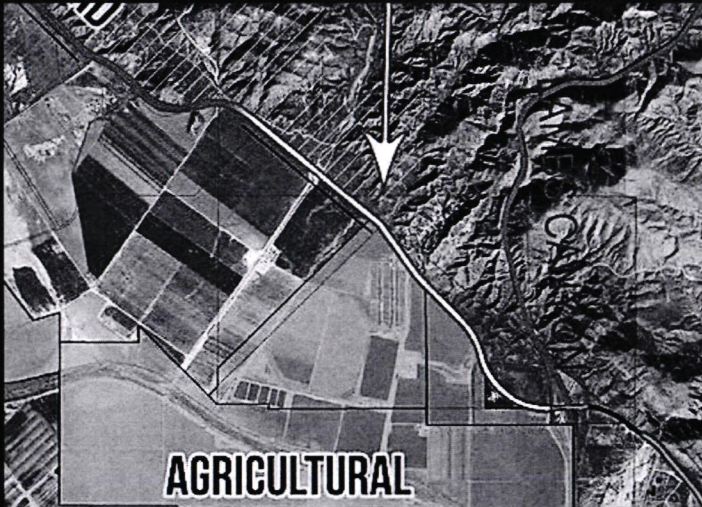
From 1-3/4 miles  
South of  
Alessandro Blvd  
to 1 mile South of  
Bridge St

- The project is currently in design
- Target Construction Date Summer 2024
- The project included the following safety improvements
  - Widen to provide 4' painted center median
  - Widen to provide 5' paved outside shoulders
  - Construct a northbound passing lane between Bridge St and Jack Rabbit Trail



## Phase 7

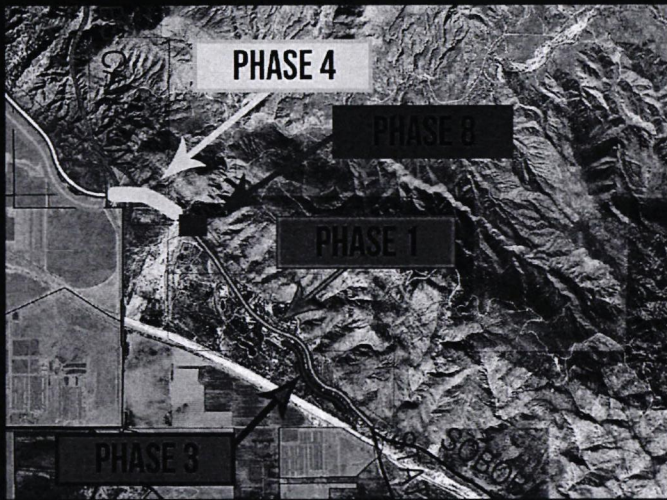
### From 1 mile South of Bridge St to SR- 79



- The project is in the project inception phase and is seeking funds to begin design
- The project proposes the following safety improvements
  - Widen to provide 4' painted center median
  - Widen to provide 5' paved outside shoulders
  - Construct a southbound passing lane between from a point approx. 1 mile south of Bridge St to a point 2 miles south of Bridge St



# Phase 8 at Potrero Creek



- The project is currently in the design phase
- The project proposes the following safety improvements
  - Replace existing bridge over Potrero Creek and realign the roadway 500 feet on either side of the bridge