

**SUBMITTAL TO THE BOARD OF SUPERVISORS
COUNTY OF RIVERSIDE, STATE OF CALIFORNIA**



ITEM: 19.2
(ID # 21642)

MEETING DATE:
Tuesday, May 02, 2023

FROM : OFFICE OF ECONOMIC DEVELOPMENT:

SUBJECT: OFFICE OF ECONOMIC DEVELOPMENT: Public Hearing Regarding the Formation of Community Facilities District No. 23-2M (Highgove) Tract 38025-2 of the County of Riverside, Adopt Resolution of Formation, and Receive and File Community Facilities District Documents. District 1. [\$105,256 Ongoing cost - 100% CFD 23-2M (Highgrove)]

RECOMMENDED MOTION: That the Board of Supervisors:

1. Conduct a public hearing to receive public comments and conduct a majority protest proceeding regarding the formation of Community Facilities District No. 23-2M (Highgrove) of the County of Riverside; and
2. Adopt Resolution No. 2023-117, a Resolution of the Board of Supervisors of the County of Riverside of Formation of Community Facilities District No. 23-2M (Highgrove) of the County of Riverside Authorizing the Levy of a Special Tax within Said District to Pay for Maintenance of Lighting, Traffic Signal Maintenance, Drainage, Park Maintenance, Graffiti Abatement, and Enhanced Sheriff Services; Calling a Special Election to Submit to the Respective Qualified Voters the Question of Levying Such Special Tax and Establishing an Appropriations Limit for Said District; and Designating the Election Official for Such Matters.

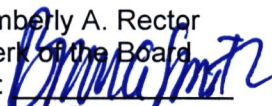
ACTION:Policy


Suzanne Holland, Director of Office of Economic Development 4/19/2023

MINUTES OF THE BOARD OF SUPERVISORS

On motion of Supervisor Jeffries, seconded by Supervisor Perez and duly carried by unanimous vote, IT WAS ORDERED that the above matter is approved as recommended.

Ayes: Jeffries, Spiegel, Washington, Perez and Gutierrez
Nays: None
Absent: None
Date: May 2, 2023
xc: O.E.D.

Kimberly A. Rector
Clerk of the Board
By: 
Deputy

**SUBMITTAL TO THE BOARD OF SUPERVISORS COUNTY OF RIVERSIDE,
STATE OF CALIFORNIA**

FINANCIAL DATA	Current Fiscal Year:	Next Fiscal Year:	Total Cost:	Ongoing Cost
COST	\$ 0	\$ 105,256	\$ 0	\$ 105,256
NET COUNTY COST	\$ 0	\$ 0	\$ 0	\$ 0
SOURCE OF FUNDS: 100% CFD 23-2M (Highgrove)			Budget Adjustment: N/A	
			For Fiscal Year: 23/24	

C.E.O. RECOMMENDATION: Approve

BACKGROUND:

Summary

The State Legislature enacted the Mello-Roos Community Facilities Act of 1982, to assist public agencies in financing certain public services and maintenance requirements. On January 27, 2015, the Board of Supervisors revised Board Policy B-12 entitled “Land Secured Financing Districts” to include “Service and Maintenance CFDs” to fund the ongoing maintenance of landscape, storm water Best Management Practices (BMP), street lighting, or other similar improvements and set goals and policies concerning Community Facilities Districts (CFD).

Foremost Center Street, LLC is the Owner of Tract 38025-2 and has petitioned that the County of Riverside Office of Economic Development assist them in forming a district and include their property for the County of Riverside (County) to cover the costs associated with the maintenance of public improvements within the proposed district. The property owner has submitted an application and formation deposit. A special tax is proposed to be levied on each individual parcel located within the boundary of the proposed Community Facilities District 23-2M (Highgrove).

The boundaries of Community Facilities District (CFD) No. 23-2M (Highgrove) (CFD 23-2M) will encompass the entire Tract Map No. 38025-2, which includes 223 townhomes, none of which are currently occupied.

On March 28, 2023 (Agenda Item 3.22), the County Board of Supervisors approved Resolution No. 2023-036, a Resolution of Intention as the initial step for forming the CFD and declared the intention of the Board of Supervisors as required by the Mello-Roos Act of 1982 to levy a special tax to fund the service and maintenance functions requested by Foremost Center Street, LLC. The Resolution of Intention also requires the Board of Supervisors hold a public hearing and submit the formation of the proposed CFD 23-2M (Highgrove) to the landowners at a special election to be conducted by mailed ballot if a majority protest does not occur.

Approval of proposed Resolution No. 2023-117, a Resolution of Formation for CFD No. 23-2M, will authorize the County to levy a special tax within the district boundary to pay for services requested in the proposed CFD 23-2M (Highgrove) upon voter approval. The Resolution of Formation also calls for a special election to be held on May 2, 2023 and designates the election official for the proposed election. There are no registered voters in the boundary of proposed CFD 23-2M (Highgrove). As a result, only the landowners within the boundary of proposed CFD 23-2M (Highgrove) will have the right to vote on the proposed special tax. Results will be tallied and, if approved, a confirmation motion will be brought back to the Board of Supervisors for approval.

**SUBMITTAL TO THE BOARD OF SUPERVISORS COUNTY OF RIVERSIDE,
STATE OF CALIFORNIA**

The costs associated with the district are (i) Street lighting maintenance, which includes energy charges, operation, maintenance, and administration of street lighting located within the designated boundaries of the CFD (ii) Traffic signal maintenance including energy charges, operation, maintenance, and administrative costs of traffic signal within the boundaries of the CFD (iii) Administration, inspection, and maintenance of all stormwater facilities and BMPs to include: water quality basins, fossil filters, basin forebays, and all other NPDES/WQMP/BMP related devices and structures as approved and accepted by the Community Facilities District; administration includes, but is not limited to, quality control and assurance of inspections and maintenance, general contract management, scheduling of inspections and maintenance, and general oversight of all NPDES/WQMP/BMP operations; inspection includes, but is not limited to, travel time, visual inspection process and procedures for functionality, GPS location recording, assurance of proper vegetation, functioning irrigation, and citing operational or structural deficiencies, erosion, trash, silt and sediment build-up; and maintenance includes, but is not limited to, repair or replacement of any deficiencies noted during inspection, weed control and abatement, trash removal, and healthy upkeep of required plant materials (iv) Park maintenance (v) Graffiti Abatement of walls and other permanent structures and (vi) Enhanced sheriff services to include, but not be limited to, specialized and targeted enforcement within the boundaries of CFD 23-2M, which is in addition to those provided in the territory of the district before the district was created.

Each new CFD is created for a specific development or developments when similar facilities are requested to be maintained by the County. A special tax is levied according to a Rate and Method of Apportionment (RMA) developed to the specific features within that District, and a special tax is annually placed on the tax roll for each Assessor Parcel Number (APN) noted in the Proposed Boundary Map, both attached herein.

Reference

The CFD Rate and Method of Apportionment (RMA) is consistent with the Mello-Roos Act of 1982. In November 1996, California voters passed Proposition 218, Right to Vote on Taxes Act which added Articles XIII C and XIII D to the California Constitution. The County may levy taxes on this proposed CFD after complying with the requirements of the Mello-Roos Community Facilities Act of 1982 and the provisions of Proposition 218 Right to Vote on Taxes Act. The formation of the proposed CFD adheres to Board Policy B-12 entitled "Land Secured Financing Districts", which was revised on January 27, 2015, to include "Service and Maintenance CFDs" to fund the ongoing maintenance of landscape, storm water, or other similar improvements and set goals and policies concerning CFDs.

Impact on Residents and Businesses

Only the parcels with Assessor Parcel Numbers within the boundaries of the proposed CFD which are represented by the attached Recorded Boundary Map (inclusive of Tract Map No. 38025-2) are impacted by the special tax. By setting up a special tax for the maintenance of certain infrastructure required by the development, the County requires that the development pay for its maintenance impact, rather than the obligation falling upon declining public funding sources. By specifically collecting and using the special tax revenue within the boundary of the CFD, there is a financial mechanism in place to ensure the infrastructure is maintained. This CFD does not propose to fund the repayment of any bonds or bond obligations and is solely for the purposes of funding the service and maintenance of Developer installed and County

**SUBMITTAL TO THE BOARD OF SUPERVISORS COUNTY OF RIVERSIDE,
STATE OF CALIFORNIA**

required infrastructure, particularly Lighting, Traffic Signal Maintenance, Drainage, Park Maintenance, Graffiti Abatement, and Enhanced Sheriff Services. The Developer shall and is obligated to provide disclosure statements to potential buyers which outline the associated tax rate of a new home.

Additional Fiscal Information

Pursuant to the Rate and Method of Apportionment for fiscal year 2023-2024, the proposed Budget of \$105,256 which consists of Special Tax A of \$352 per taxable parcel and a Special Tax B of \$120 per taxable parcel. The annual tax shall be increased by the minimum of 2% or up to cumulative percentage increase in the Consumer Price Index for all Urban Consumers (CPI-U) in effect in the previous Fiscal Year, as it stands as of March of each year over the base index of previous fiscal year.

ATTACHMENTS:

- Recorded CFD Boundary Map (reference only)
- Resolution No. 2023-117
- CFD Report
- Certificate of Registrar of Voters
- Concurrence of Election
- Petition



Scott Bruckner 4/25/2023



Aaron Gettis, Deputy County Counsel 4/20/2023

2 RESOLUTION NO. 2023-117

3 A RESOLUTION OF THE BOARD OF SUPERVISORS OF THE COUNTY OF RIVERSIDE OF
 4 FORMATION OF COMMUNITY FACILITIES DISTRICT NO. 23-2M (HIGHGROVE) OF THE
 5 COUNTY OF RIVERSIDE, AUTHORIZING THE LEVY OF A SPECIAL TAX WITHIN SAID
 6 DISTRICT TO PAY FOR MAINTENANCE OF LIGHTING, TRAFFIC SIGNAL MAINTENANCE,
 7 DRAINAGE, PARK MAINTENANCE, GRAFFITI ABATEMENT, AND ENHANCED SHERIFF
 8 SERVICES; CALLING A SPECIAL ELECTION TO SUBMIT TO THE RESPECTIVE QUALIFIED
 9 VOTERS THE QUESTION OF LEVYING SUCH SPECIAL TAX AND ESTABLISHING AN
APPROPRIATIONS LIMIT FOR SAID DISTRICT; AND DESIGNATING THE ELECTION
OFFICIAL FOR SUCH MATTERS

FORM APPROVED COUNTY COUNSEL
 BY:  STEPHANIE K. NELSON
 DATE: 4/20/23

10 **WHEREAS**, on March 28, 2023, the Board of Supervisors (the “Board of Supervisors”) of the
 11 County of Riverside (the “County”), pursuant to the Mello-Roos Community Facilities Act of 1982 (the
 12 “Act”), commencing with Section 53311 of the California Government Code (the “Government Code”),
 13 adopted Resolution No. 2023-036 (the “Resolution of Intention”), stating its intention to establish a
 14 community facilities district, proposed to be named Community Facilities District No. 23-2M (Highgrove)
 15 of the County of Riverside (the “Community Facilities District”), and to authorize the levy of special taxes
 16 to finance certain authorized services and setting May 2, 2023, as the date for a public hearing to be held
 17 on the establishment of the Community Facilities District;

18 **WHEREAS**, Section 53322 of the Government Code requires publication of the notice of the
 19 hearing at least seven (7) days prior to the date of the hearing;

20 **WHEREAS**, Section 53322.4 of the Government Code permits, but does not require, mailing of the
 21 notice of the hearing to each registered voter and landowner within the proposed district;

22 **WHEREAS**, notice of such public hearing was timely published in *The Press-Enterprise*, a
 23 newspaper of general circulation published in the area of the proposed district, as required by Section 53322
 24 of the Government Code;

1 **WHEREAS**, notice of such public hearing was mailed by first class mail, postage prepaid to each
2 registered voter and landowner within the Community Facilities District, as permitted by Section 53322.4;

3 **WHEREAS**, on this date, the Board of Supervisors conducted and closed said public hearing to
4 consider establishing the proposed Community Facilities District, the proposed levy of a special tax within
5 the Community Facilities District and a proposed appropriations limit;

6 **WHEREAS**, any and all persons interested, including all taxpayers, property owners and registered
7 voters within the proposed Community Facilities District were given an opportunity to appear and be heard
8 at said public hearing and a full hearing was held;

9 **WHEREAS**, pursuant to the Resolution of Intention, each officer of the County who is or will be
10 responsible for providing one or more of the proposed types of authorized services was directed to study,
11 or cause to be studied, the proposed Community Facilities District and, at or before said public hearing, file
12 a report with the Board of Supervisors containing a brief description of the authorized services by type
13 which will in his or her opinion be required to adequately meet the needs of the Community Facilities
14 District, and his or her estimate of the cost of providing the services proposed to be financed by the
15 Community Facilities District and the fair and reasonable cost of the incidental expenses proposed to be
16 paid;

17 **WHEREAS**, said report was so filed with the Board of Supervisors and made a part of the record
18 of said public hearing;

19 **WHEREAS**, at said public hearing, evidence was presented to the Board of Supervisors on the
20 matters before it, and the Board of Supervisors at the conclusion of the hearing was fully advised as to all
21 matters relating to the proposed establishment of the Community Facilities District and the furnishing of
22 specified types of services;

23 **WHEREAS**, written protests against the establishment of the Community Facilities District, the
24 furnishing of any specified type or types of authorized services within the Community Facilities District or
25 the levying of any specified special tax were not made or filed at or before the hearing by 50% or more of
26 the registered voters, or six registered voters, whichever is more, residing within the territory proposed to
27 be included in the Community Facilities District, or by the owners of one-half or more of the area of land
28

1 in the territory proposed to be included in the Community Facilities District and not exempt from the special
2 tax;

3 **WHEREAS**, there has been filed with the Clerk to the Board of Supervisors a certification of the
4 Registrar of Voters of the County that within the ninety-day period preceding the close of said public
5 hearing, zero (0) persons were registered to vote within the territory proposed to be included in the
6 Community Facilities District;

7 **WHEREAS**, on the basis of all of the foregoing, the Board of Supervisors has determined at this
8 time to proceed with the establishment of the Community Facilities District as provided by said Resolution
9 No. 2023-036 to submit to the qualified electors of the Community Facilities District propositions to
10 authorize the levy of a special tax pursuant to the Rate and Method of Apportionment of Special Tax
11 described in Exhibit B to Resolution No. 2023-036 and the Community Facilities District Report;

12 **WHEREAS**, the Board of Supervisors has received a Petition, Consent and Waiver of 100% of the
13 landowners within the boundaries of the Community Facilities District waiving certain election
14 requirements, time limits and formalities; and

15 **WHEREAS**, the Board of Supervisors has determined that the establishment of the Community
16 Facilities District is not a project for purposes of the California Environmental Quality Act (CEQA) and is
17 exempt from CEQA.

18 **NOW, THEREFORE, BE IT RESOLVED, FOUND, DETERMINED, AND ORDERED** by
19 the Board of Supervisors of the County of Riverside, State of California, in regular session assembled on
20 May 2, 2023, as follows:

21 **Section 1.** All of the above recitals are true and correct.

22 **Section 2.** The Board of Supervisors hereby approves and adopts and confirms said Resolution
23 No. 2023-036, notice of which was published and mailed prior to the public hearing as required by law,
24 and, except as otherwise provided herein, reconfirms all of its findings and determinations contained in said
25 Resolution No. 2023-036.

26 **Section 3.** The Board of Supervisors hereby approves and adopts the Rate and Method of
27 Apportionment of Special Tax for the Community Facilities District and the manner of collection of the
28

1 special tax as set forth in Exhibit B to this resolution. To the extent required by Section 53325.1(a) of the
2 Government Code, all of the information contained in Resolution No. 2023-036 is incorporated herein and
3 made a part hereof.

4 **Section 4.** The Community Facilities District is hereby established according to the Act.

5 **Section 5.** The Community Facilities District is hereby named "Community Facilities District
6 No. 23-2M (Highgrove) of the County of Riverside."

7 **Section 6.** The services to be provided and funded by the Community Facilities District are
8 described under the caption "Services" on Exhibit A hereto, which is by this reference incorporated herein.
9 The incidental expenses proposed to be incurred are identified under the caption "Incidental Expenses" on
10 Exhibit A hereto.

11 **Section 7.** The proposed special tax to be levied within the Community Facilities District has
12 not been precluded by majority protest pursuant to Section 53324 of the California Government Code; and
13 any and all written protests to the special tax and appropriations limit are hereby overruled.

14 **Section 8.** Except where funds are otherwise available, a special tax sufficient to pay for all
15 Services, secured by recordation of a continuing lien against all nonexempt real property in the Community
16 Facilities District, will be annually levied within the Community Facilities District. The rate and method of
17 apportionment of the special tax (the "Rate and Method"), in sufficient detail to allow each landowner
18 within the proposed Community Facilities District to estimate the maximum amount that he or she will have
19 to pay, is described in Exhibit B attached hereto, which is by this reference incorporated herein. The special
20 tax will be collected in the same manner as ordinary *ad valorem* property taxes or in such other manner as
21 the Board of Supervisors shall determine, including direct billing of the affected property owners.

22 The special tax will be levied annually, until terminated by the Board of Supervisors, as specified
23 in the Rate and Method.

24 **Section 9.** The name, address and telephone number of the office which will be responsible for
25 preparing annually a current roll of special tax levy obligations by assessor's parcel number and which will
26 be responsible for estimating further special tax levies pursuant to Section 53340.2 of the California
27
28

1 Government Code are as follows: Office of Economic Development Community Facilities District
2 Administrator, 3403 10th Street, Suite 400, Riverside, California 92501, (951) 955-8916.

3 **Section 10.** Upon recordation of a notice of special tax lien pursuant to Section 3114.5 of the
4 California Streets and Highways Code, a continuing lien to secure each levy of the special tax shall attach
5 to all nonexempt real property in the Community Facilities District and this lien shall continue in force and
6 effect until collection of the tax by the Board of Supervisors ceases.

7 **Section 11.** The boundary map of the Community Facilities District was recorded on April 5,
8 2023, in Riverside County in Book 90 at Page 96 of the Book of Maps of Assessment and Community
9 Facilities Districts in the Riverside County Recorder's Office, as Instrument No. 2023-0096960. The Board
10 of Supervisors hereby approves and ratifies said map and the boundaries of the Community Facilities
11 District which are incorporated herein and made a part hereof.

12 **Section 12.** The annual appropriations limit, as defined by subdivision (h) of Section 8 of Article
13 XIII B of the California Constitution, of the Community Facilities District is hereby established at
14 \$4,000,000.

15 **Section 13.** Pursuant to the provisions of the Act, the levy of the special tax and a proposition to
16 establish the appropriations limit specified above shall be subject to the approval of the qualified electors
17 of the Community Facilities District at a special election. The Registrar of Voters has determined, and the
18 Board of Supervisors finds, that fewer than 12 persons are registered to vote within the territory included
19 in the Community Facilities District. Accordingly, pursuant to Section 53326 of the Government Code, the
20 vote concerning the special tax and appropriations limit shall be by the landowners of the Community
21 Facilities District; and each landowner who is the owner of record as of the close of the public hearing, or
22 the authorized representative thereof, shall have one vote for each acre or portion of an acre that he or she
23 owns within the Community Facilities District. The voting procedure shall be by mailed or hand-delivered
24 ballot. The Board of Supervisors also finds that the requirements of Section 53326 of the Act pertaining to
25 the shortening of time and the requirement for notice have been waived by all of the landowners within the
26 Community Facilities District.

1 **Section 14.** The Board of Supervisors hereby calls and schedules a special election for May 2,
2 2023, at 9:30 a.m. within and for the Community Facilities District on (i) the proposition with respect to
3 the annual levy of special taxes within the Community Facilities District for the provision of authorized
4 services to the Community Facilities District and (ii) the proposition with respect to establishing an
5 appropriations limit for the Community Facilities District.

6 The propositions to be submitted to the voters of the Community Facilities District at such special
7 election shall be as follows:

8 Proposition A: Shall special taxes be levied annually on taxable property within Community
9 Facilities District No. 23-2M (Highgrove) of the County of Riverside to fund, pay for, and
10 finance authorized maintenance of Lighting, Traffic Signal Maintenance, Drainage, Park
11 Maintenance, Graffiti Abatement, and Enhanced Sheriff Services (as specified and reflected
12 in the Resolution of Intention, the Resolution of Formation, and the Rate and Method of
13 Apportionment of Special Tax) and to pay expenses incidental thereto and incidental to the
14 levy and collection of the special taxes, so long as the special taxes are needed to fund such
15 services, at the special tax rates and pursuant to the method of apportioning the special taxes
16 set forth in Exhibit B to Resolution No. 2023-036 adopted by the Board of Supervisors of
17 said County on March 28, 2023.

18 Proposition B: Shall an appropriations limit, as defined by subdivision (h) of Section 8 of
19 Article XIII B of the California Constitution, be established for Community Facilities
20 District No. 23-2M (Highgrove) of the County of Riverside in the amount of \$4,000,000?

21 **Section 15.** Based on its findings that fewer than 12 registered voters reside within the boundaries
22 of the Community Facilities District and that the election will be among landowner voters, the Board of
23 Supervisors hereby appoints the Director of the Riverside County Office of Economic Development or her
24 designee, or such other officer or employee as the Board shall designate, to serve as the election official
25 (the "Election Official") for the election pursuant to Government Code Section 53326.

26 **Section 16.** The procedures to be followed in conducting the special election on (i) the
27 proposition with respect to the levy of special taxes on taxable property within the Community Facilities
28

1 District to pay the costs of authorized services, and (ii) the proposition with respect to establishing an
2 appropriations limit for the Community Facilities District in the amount of \$4,000,000 (the “Special
3 Election”) shall be as follows:

4 (a) Pursuant to Section 53326 of the California Government Code, ballots for the Special
5 Election shall be distributed to the qualified electors by the Election Official by mail with return postage
6 prepaid or by personal service.

7 (b) Pursuant to applicable sections of the California Elections Code governing the conduct of
8 mail ballot elections of counties, and in particular Division 4 (commencing with Section 4000) of that Code
9 with respect to elections conducted by mail, the Election Official shall mail or deliver to each qualified
10 elector an official ballot and shall also mail or deliver to all such qualified electors a ballot pamphlet and
11 instructions to voter, including a sample ballot identical in form to the official ballot but identified as a
12 sample ballot, a return identification envelope with prepaid postage thereon addressed to the Election
13 Official for the returning of voted official ballots, and a copy of Resolution No. 2023-036.

14 (c) The official ballot to be mailed or delivered by the Election Official to each landowner-voter
15 shall have printed or typed thereon the name of the landowner-voter and the number of votes to be voted
16 by the landowner-voter and shall have appended to it a certification to be signed by the person voting the
17 official ballot which shall certify that the person signing the certification is the person who voted the official
18 ballot, and if the landowner-voter is other than a natural person, that he or she is an officer of or other person
19 affiliated with the landowner-voter entitled to vote such official ballot, that he or she has been authorized
20 to vote such official ballot on behalf of the landowner-voter, that in voting such official ballot it was his or
21 her intent, as well as the intent of the landowner-voter, to vote all votes to which the landowner-voter is
22 entitled based on its land ownership on the propositions set forth in the official ballot as marked thereon in
23 the voting square opposite each such proposition, and further certifying as to the acreage of the landowner-
24 voter’s land ownership within the Community Facilities District.

25 (d) The return identification envelope to be mailed or delivered by the Election Official to each
26 landowner-voter shall have printed or typed thereon the following: (i) the name of the landowner, (ii) the
27 address of the landowner, (iii) a declaration under penalty of perjury stating that the voter is the landowner
28

1 or the authorized representative of the landowner entitled to vote the enclosed ballot and is the person whose
2 name appears on the identification envelope, (iv) the printed name and signature of the voter, (v) the address
3 of the voter, (vi) the date of signing and place of execution of the declaration, and (vii) a notice that the
4 envelope contains an official ballot and is to be opened only by the Election Official.

5 (e) The information to voter form to be mailed or delivered by the Election Official to the
6 landowner-voters shall inform them that the official ballots shall be returned to the Election Official
7 properly voted as provided thereon and with the certification appended thereto properly completed and
8 signed in the sealed return identification envelope with the certification thereon completed and signed and
9 all other information to be inserted thereon properly inserted by 9:00 a.m. on the date of the Special Election;
10 provided that the election shall be closed before such hour if the Election Official determines that all of the
11 qualified voters have voted.

12 (f) Upon receipt of the return identification envelopes which are returned prior to the voting
13 deadline on the date of the Special Election, the Election Official shall canvass the votes cast in the Special
14 Election, and shall file a statement with the Board of Supervisors as to the results of such canvass and the
15 election on each proposition set forth in the official ballot.

16 (g) The Legislative Body shall declare the results of said special election as soon as practicable
17 following the election, but in any event not later than the next regular meeting following the date of the
18 election, and shall cause to be input upon its minutes a statement of the results of said special election as
19 ascertained by the canvass.

20 **Section 17.** If two-thirds (2/3) of the votes cast within the Community Facilities District upon
21 the question of levying the special tax are in favor of the levy of that tax, as determined by the Board of
22 Supervisors after the canvass of the returns of such election, the Legislative Body may levy such special
23 taxes within the territory of the Community Facilities District in the amounts and for the purposes as
24 specified in this Resolution, the Special Tax Ordinance (to be adopted), and the Rate and Method of
25 Apportionment, except that such special tax may be levied at a rate lower than the amount specified therein.

26 **Section 18.** The Board of Supervisors hereby determines and finds that all proceedings up to and
27 including the adoption of this Resolution were valid and in conformity with the requirements of the Act. In
28

1 accordance with Section 53325.1 of the California Government Code, such finding shall be final and
2 conclusive.

3 **Section 19.** The Board of Supervisors finds and determines that the establishment of the
4 Community Facilities District is not a project for purposes of the California Environmental Quality Act and
5 is exempt from that Act.

6 **Section 20.** The officers of the County are, and each of them is, hereby authorized and directed
7 to do any and all things, and to execute and deliver any and all documents which said officers may deem
8 necessary or advisable in order to accomplish the purposes of this Resolution and not inconsistent with the
9 provisions hereof.


10 **ADOPTED, SIGNED AND APPROVED** this 2nd day of May 2023, by the Board of Supervisors
11 of the County of Riverside.

12
13 
14 _____
15 Chair of the Board of Supervisors
16 **KEVIN JEFFRIES**

17 ATTEST:

18 Kimberley A. Rector

19 Clerk to the Board of Supervisors

20
21 By: 
22 _____
23 Deputy

2
3 RESOLUTION NO. 2023-117

4 A RESOLUTION OF THE BOARD OF SUPERVISORS OF THE COUNTY OF RIVERSIDE OF
5 FORMATION OF COMMUNITY FACILITIES DISTRICT NO. 23-2M (HIGHGROVE) OF THE
6 COUNTY OF RIVERSIDE, AUTHORIZING THE LEVY OF A SPECIAL TAX WITHIN SAID
7 DISTRICT TO PAY FOR MAINTENANCE OF LIGHTING, TRAFFIC SIGNAL
8 MAINTENANCE, DRAINAGE, PARK MAINTENANCE, GRAFFITI ABATEMENT, AND
9 ENHANCED SHERIFF SERVICES; CALLING A SPECIAL ELECTION TO SUBMIT TO THE
10 RESPECTIVE QUALIFIED VOTERS THE QUESTION OF LEVYING SUCH SPECIAL TAX
11 AND ESTABLISHING AN APPROPRIATIONS LIMIT FOR SAID DISTRICT; AND
12 DESIGNATING THE ELECTION OFFICAL FOR SUCH MATTERS

13
14 ROLL CALL:

15
16 Ayes: Jeffries, Spiegel, Washington, Perez and Gutierrez

17 Nays: None

18 Absent: None

19 The foregoing is certified to be a true copy of a resolution duly adopted by said Board of
20 Supervisors on the date therein set forth.

21
22 KIMBERLY A. RECTOR, Clerk of said Board

23
24 By: 

25 Deputy

1 **EXHIBIT A**

2 **SERVICES AND INCIDENTAL EXPENSES**

3
4 **Services**

5 The types of services to be financed by the Community Facilities District are:

- 6 (i) Street lighting maintenance, which includes energy charges, operation, maintenance, and
7 administration of street lighting located within the designated boundaries of the CFD; and
- 8 (ii) Traffic signal maintenance including energy charges, operation, maintenance, and
9 administrative costs of traffic signal within the boundaries of the CFD; and
- 10 (iii) Administration, inspection, and maintenance of all stormwater facilities and BMPs to
11 include: water quality basins, fossil filters, basin forebays, and all other
12 NPDES/WQMP/BMP related devices and structures as approved and accepted by the
13 Community Facilities District; administration includes, but is not limited to, quality control
14 and assurance of inspections and maintenance, general contract management, scheduling of
15 inspections and maintenance, and general oversight of all NPDES/WQMP/BMP operations;
16 inspection includes, but is not limited to, travel time, visual inspection process and
17 procedures for functionality, GPS location recording, assurance of proper vegetation,
18 functioning irrigation, and citing operational or structural deficiencies, erosion, trash, silt
19 and sediment build-up; and maintenance includes, but is not limited to, repair or replacement
20 of any deficiencies noted during inspection, weed control and abatement, trash removal, and
21 healthy upkeep of required plant materials; and
- 22 (iv) Park maintenance; and
- 23 (v) Graffiti abatement of walls and other permanent structures; and
- 24 (vi) Enhanced sheriff services to include, but not be limited to, specialized and targeted
25 enforcement within the boundaries of CFD 23-2M, which is in addition to those provided in
26 the territory of the district before the district was created.
- 27
28

1 **Incidental Expenses**

2 The incidental expenses proposed to be incurred include the following:

- 3 (i) The cost associated with the creation of the Community Facilities District, determination of the
4 amount of taxes, collection of taxes, including litigation expenses, if any, costs for processing
5 payment of taxes, or other administrative costs otherwise incurred in order to carry out the
6 authorized purposes of the Community Facilities District; and
7 (ii) Any other expenses incidental to the performance and inspection of the authorized Services.

8
9
10
11
12
13
14
15
16
17
18
19
20
21
22
23
24
25
26
27
28

1
2
3
4
5
6
7
8
9
10
11
12
13
14
15
16
17
18
19
20
21
22
23
24
25
26
27
28

EXHIBIT B
PROPOSED RATE AND METHOD OF APPORTIONMENT OF SPECIAL TAX

[See Attached.]

CERTIFICATE OF MAILING

I, the undersigned, say that I am a citizen of the United States and am employed in the County of Riverside, am over the age of 18 years; and that I am readily familiar with this offices' practice of collection and processing correspondence for mailing. My business address is Office of Economic Development Attention: CFD Administrator, 3403 10th St., Ste. 400, Riverside, CA 92501. Under this office's practice, mail would be deposited with the U.S. Postal Service on the same day with postage thereon fully prepaid at Riverside, California, in the ordinary course of business.


On APRIL 12, 20 23, I mailed a copy of the following documents:

Notice of Public Hearing to Landowner; Resolution No. 2023-036 and exhibits thereto by delivering a true copy thereof in a sealed, stamped, envelope(s) addressed as follows:

**Foremost Center Street, LLC.
27271 Las Ramblas, Suite 150
Mission Viejo, CA 92691**

I declare under penalty of perjury under the laws of the State of California that the foregoing is true and correct.

Executed on APRIL 12, 20 23, at Riverside California.



Michael Franklin

CFD 23-2M (Highgrove)

COPY

90
96

SHEET 1 OF 1 SHEET

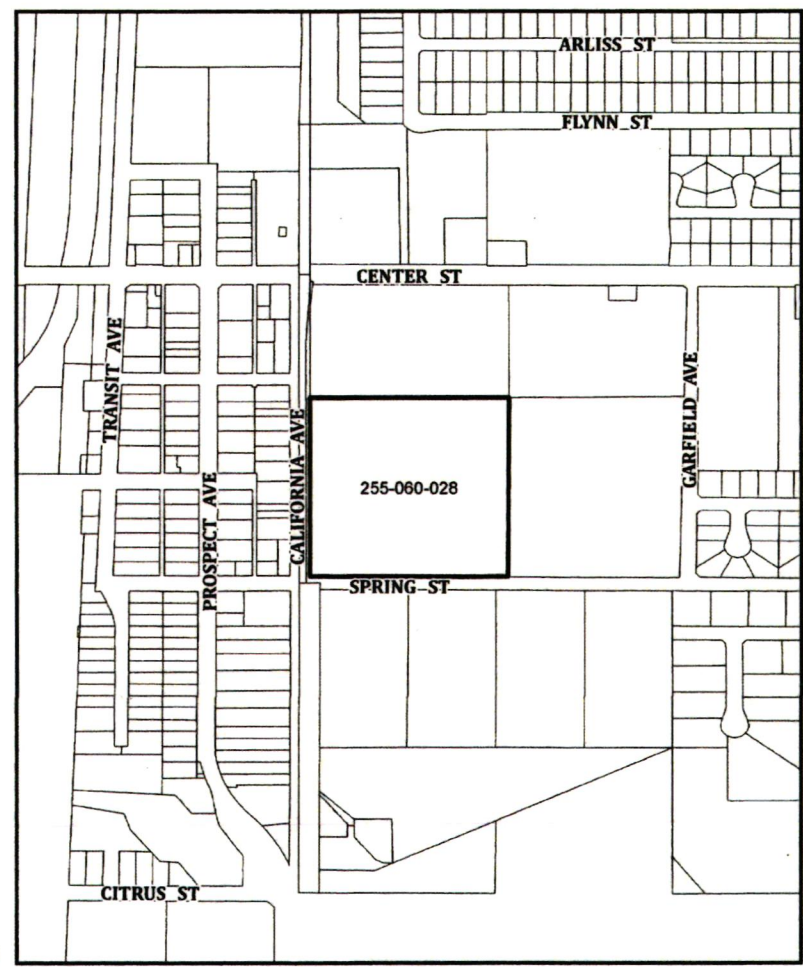
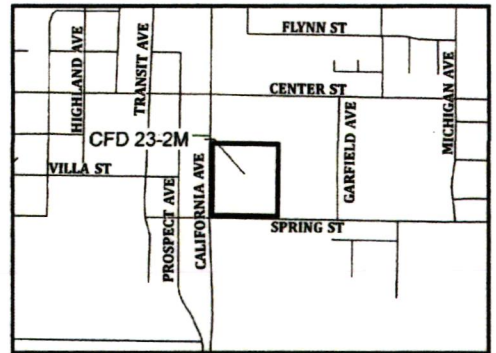
PROPOSED BOUNDARY MAP
COMMUNITY FACILITIES DISTRICT NO. 23-2M
(HIGHGROVE)
COUNTY OF RIVERSIDE, STATE OF CALIFORNIA

I HEREBY CERTIFY THAT THE WITHIN MAP SHOWING PROPOSED BOUNDARIES OF COMMUNITY FACILITIES DISTRICT NO. 23-2M (HIGHGROVE) COUNTY OF RIVERSIDE, STATE OF CALIFORNIA, WAS APPROVED BY THE BOARD OF SUPERVISORS AT A REGULAR MEETING THEREOF, HELD ON 28th DAY OF March, 2023, BY RESOLUTION NO. 2023-036

Peter Aldana
 CLERK OF THE BOARD OF SUPERVISORS
 COUNTY OF RIVERSIDE

FILED IN THE OFFICE OF THE CLERK OF THE BOARD OF SUPERVISORS OF THE COUNTY OF RIVERSIDE, STATE OF CALIFORNIA. THIS 28th DAY OF March, 2023.

Jane Magwell (Deputy)
 CLERK OF THE BOARD OF SUPERVISORS
 COUNTY OF RIVERSIDE

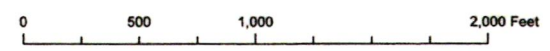


FILED THIS 5 DAY OF April, 2023 AT THE HOUR OF 11:03 O'CLOCK A.M. IN BOOK 90 OF MAPS OF ASSESSMENT AND COMMUNITY FACILITIES DISTRICTS AT PAGE 96, IN THE OFFICE OF THE COUNTY RECORDER, IN THE COUNTY OF RIVERSIDE, STATE OF CALIFORNIA.

FEE: \$ 9.00 NO.: 2023-0096960
 PETER ALDANA, ASSESSOR, COUNTY CLERK, RECORDER
 BY: *Tankie*
 DEPUTY



THIS BOUNDARY MAP CORRECTLY SHOWS THE BOUNDARIES OF THE COMMUNITY FACILITIES DISTRICT. FOR DETAILS CONCERNING THE LINES AND DIMENSIONS OF LOTS OR PARCEL REFER TO THE COUNTY ASSESSOR'S MAPS FOR FISCAL YEAR 2022-23.



LEGEND

- CFD BOUNDARY
- PARCEL LINE
- COUNTY BOUNDARY
- ASSESSOR PARCEL NUMBER



PETITION, WAIVER AND CONSENT

March 10, 2023

Board of Supervisors of the
County of Riverside
4080 Lemon Street
Riverside, California 92506

Members of the Board:

This Petition, Waiver and Consent ("**Petition**") is (i) a petition submitted pursuant to the Mello-Roos Community Facilities Act of 1982 (Section 53311 and following of the California Government Code) (the "**Act**") to create a community facilities district to fund certain maintenance and services, and (ii) a waiver and consent of certain election formalities and procedures.

1. Petitioners. This Petition is submitted pursuant to the Act to the County of Riverside (the "**County**") by the undersigned owner (the "**Property Owner**") of 100% of the fee simple interest in the following parcels of land identified by Assessor Parcel Numbers (the "**Property**"):

255-060-028				

The Property is further shown on the map attached hereto as Exhibit B. The Property Owner warrants to the County with respect to the Property that the signatories are authorized to execute this Petition.

2. Request to Institute Proceedings. The Board of Supervisors is hereby requested to do all of the following:

- a. Undertake proceedings under the Act to create a community facilities district to be designated "Community Facilities District No. **CFD 23-2M** of the County of Riverside" (the "**CFD**"), which CFD shall include only the Property; and
- b. Conduct a landowner-voter election in accordance with the Act to obtain authorization to levy a special tax within the CFD.

3. Boundaries of CFD. The Property Owner hereby asks that the territory within the boundaries of the CFD be as shown on the map attached hereto as Exhibit B.

4. Purpose of CFD. The CFD shall be created for the purpose to fund the costs associated with (i) Street lighting maintenance, which includes energy charges, operation, maintenance, and administration of street lighting located within the designated boundaries of the CFD (ii) Traffic signal maintenance including energy charges, operation, maintenance, and administrative costs of traffic signal within the boundaries of the CFD (iii) Administration, inspection, and maintenance of all stormwater facilities and BMPs to include: water quality basins, fossil filters, basin forebays, and all other NPDES/WQMP/BMP related devices and structures as approved and accepted by the Community Facilities District; administration includes, but is not limited to, quality control and assurance of inspections and maintenance, general contract management, scheduling of inspections and maintenance, and general oversight of all NPDES/WQMP/BMP operations; inspection includes, but is not limited to, travel time, visual inspection process and procedures for functionality, GPS location recording, assurance of proper vegetation, functioning irrigation, and citing operational or structural deficiencies, erosion, trash, silt and sediment build-up; and maintenance includes, but is not limited to, repair or replacement of any deficiencies noted during inspection, weed control and abatement, trash removal, and healthy upkeep of required plant materials (iv) Park maintenance (v) Graffiti Abatement of walls and other permanent structures and. (vi) Enhanced Sheriff services to include, but not limited to, specialized and targeted enforcement within the boundaries of CFD 23-2M, which is in addition to those provided in the territory of the district before the district was created.
5. Elections. The Property Owner hereby asks that the special election to be held under the Act to authorize the special taxes and to establish an appropriations limit for the CFD be consolidated into a single election and that the election be conducted by the County and its officials, using mailed or hand-delivered ballots, and that such ballots be opened and canvassed and the results certified at the same meeting of the Board of Supervisors as the public hearings on the CFD under the Act or as soon thereafter as possible.
6. Waivers. To expedite the completion of the proceedings for the CFD and to hold the elections on the date described in paragraph 5 above, the Property Owner makes all of the following waivers:
 - The Property Owner hereby waives any and all minimum time periods relative to the election pursuant to Government Code Section 53326(a).
 - The Property Owner hereby waives the preparation and distribution of an impartial analysis of the ballot measure, as well as arguments in favor and against, under the authority of Government Code Section 53327(b).
 - The Property Owner hereby waives the requirement to publish notice of the election under Government Code Section 53352.
 - The Property Owner hereby waives the requirements regarding the time to mail ballots to the qualified electors under Elections Code Section 4101 and agrees that either mailed service or personal service of the ballot will be sufficient
 - The Property Owner hereby waives any requirement as to the specific form of the ballot to be used for the election, whether under the Act, the California Elections Code or otherwise
 - The Property Owner hereby waives the requirements regarding identification envelopes for the return of mailed ballots contained in Government Code Section 53327.5.
7. Deposits. Compliance with the provisions of subsection (d) of Section 53318 of the Act has been accomplished by a previous deposit of funds by the Property Owner with the County.

By executing this Petition, the Property Owner agrees to all of the above.

The name of the owner of record of such property and the petitioner and its mailing address is:

Foremost Center Street, LLC
A Delaware limited liability company

By: 

Name: Michael L. Canfield

Title: Manager

Mailing Address:

27271 Las Ramblas, Suite 150
Mission Viejo, CA 92691

EXHIBIT A

SERVICES AND INCIDENTAL EXPENSES

Services

The types of services to be finance by the Community Facilities District are:

- i. Street lighting maintenance, which includes energy charges, operation, maintenance, and administration of street lighting located within the designated boundaries of the CFD; and
- ii. Traffic signal maintenance including energy charges, operation, maintenance, and administrative costs of traffic signal within the boundaries of the CFD; and
- iii. Administration, inspection, and maintenance of all stormwater facilities and BMPs to include: water quality basins, fossil filters, basin forebays, and all other NPDES/WQMP/BMP related devices and structures as approved and accepted by the Community Facilities District; administration includes, but is not limited to, quality control and assurance of inspections and maintenance, general contract management, scheduling of inspections and maintenance, and general oversight of all NPDES/WQMP/BMP operations; inspection includes, but is not limited to, travel time, visual inspection process and procedures for functionality, GPS location recording, assurance of proper vegetation, functioning irrigation, and citing operational or structural deficiencies, erosion, trash, silt and sediment build-up; and maintenance includes, but is not limited to, repair or replacement of any deficiencies noted during inspection, weed control and abatement, trash removal, and healthy upkeep of required plant materials
- iv. Park maintenance; and
- v. Graffiti abatement of walls and other permanent structures; and
- vi. Enhanced Sheriff services to include, but not limited to, specialized and targeted enforcement within the boundaries of CFD 23-2M, which is in addition to those provided in the territory of the district before the district was created.

Incidental Expenses

The incidental expenses proposed to be incurred include the following:

- i. The cost associated with the creation of the Community Facilities District, determination of the amount of taxes, collection of taxes, including litigation expenses, if any, costs for processing payment of taxes, or other administrative costs otherwise incurred in order to carry out the authorized purposes of the Community Facilities District; and
- ii. Any other expenses incidental to the performance and inspection of the authorized Services.

PROPOSED BOUNDARY MAP

COMMUNITY FACILITIES DISTRICT NO. 23-2M (HIGHGROVE) COUNTY OF RIVERSIDE, STATE OF CALIFORNIA

I HEREBY CERTIFY THAT THE WITHIN MAP SHOWING PROPOSED BOUNDARIES OF COMMUNITY FACILITIES DISTRICT NO. 23-2M (HIGHGROVE) COUNTY OF RIVERSIDE, STATE OF CALIFORNIA, WAS APPROVED BY THE BOARD OF SUPERVISORS AT A REGULAR MEETING THEREOF, HELD ON _____ DAY OF _____, 20____, BY RESOLUTION NO. _____

CLERK OF THE BOARD OF SUPERVISORS
COUNTY OF RIVERSIDE

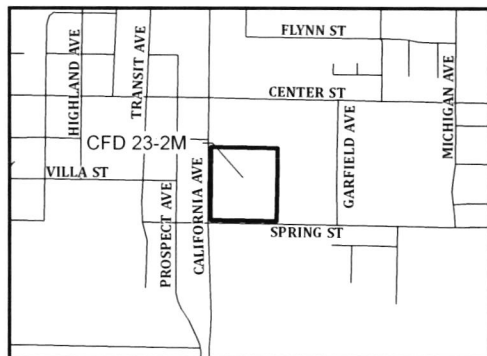
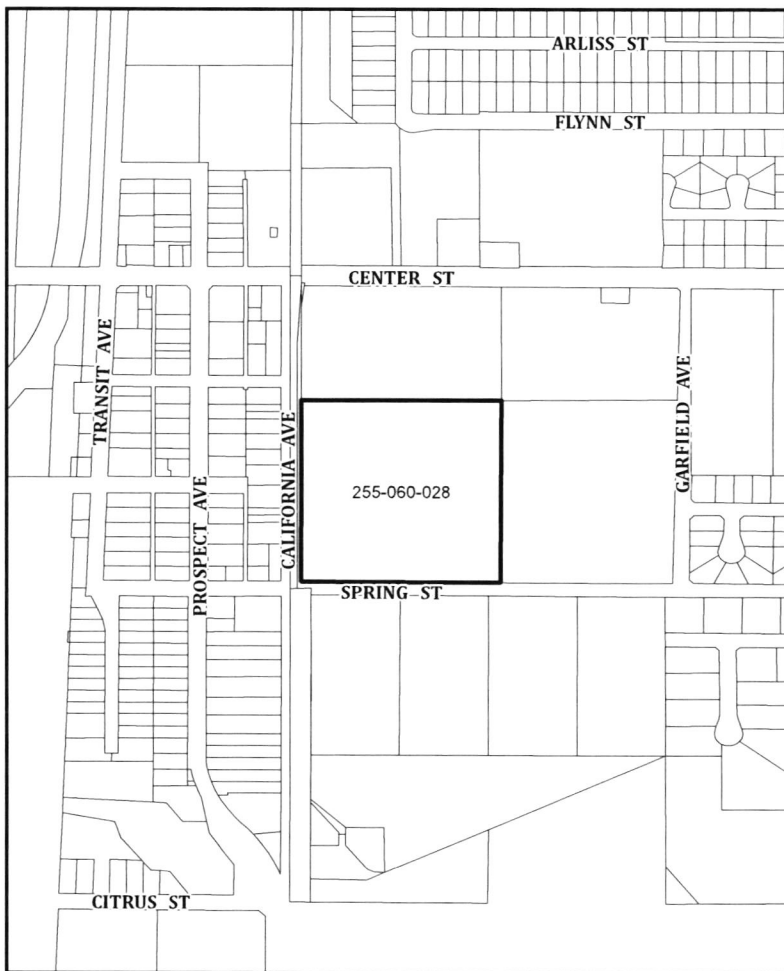
FILED IN THE OFFICE OF THE CLERK OF THE BOARD OF SUPERVISORS OF THE COUNTY OF RIVERSIDE, STATE OF CALIFORNIA. THIS _____ DAY OF _____, 20____.

CLERK OF THE BOARD OF SUPERVISORS
COUNTY OF RIVERSIDE

FILED THIS ____ DAY OF _____, 20____ AT THE HOUR OF ____ O'CLOCK ____M IN BOOK _____ OF MAPS OF ASSESSMENT AND COMMUNITY FACILITIES DISTRICTS AT PAGE _____, IN THE OFFICE OF THE COUNTY RECORDER, IN THE COUNTY OF RIVERSIDE, STATE OF CALIFORNIA.

FEE: _____ NO.: _____
PETER ALDANA, ASSESSOR, COUNTY CLERK, RECORDER

BY: _____
DEPUTY



LEGEND

- CFD BOUNDARY
- PARCEL LINE
- COUNTY BOUNDARY
- ASSESSOR PARCEL NUMBER



THIS BOUNDARY MAP CORRECTLY SHOWS THE BOUNDARIES OF THE COMMUNITY FACILITIES DISTRICT. FOR DETAILS CONCERNING THE LINES AND DIMENSIONS OF LOTS OR PARCEL REFER TO THE COUNTY ASSESSOR'S MAPS FOR FISCAL YEAR 2022-23.



RIVERSIDE COUNTY
OFFICE OF ECONOMIC DEVELOPMENT

CONCURRENCE OF ELECTION OFFICIAL IN
DATE OF SPECIAL ELECTION

I, Suzanne Holland, Director of the County of Riverside Office of Economic Development (the "County"), hereby certify as follows:

(a) I am the election official responsible for conducting special elections in the County; and

(b) Pursuant to California Government Code Section 53326(a), I do hereby concur in the holding of a special election on Tuesday, May 2, 2023, for the purpose of submitting to the qualified electors of proposed Community Facilities District No. 23-3M (Canterwood) of the County of Riverside (the "District") the proposition to levy a special tax within the District and to establish an appropriations limit for the District, as provided in Resolution No. 2023-119, proposed to be adopted by the Riverside County Board of Supervisors on May 2, 2023.

Dated: April 11, 2023

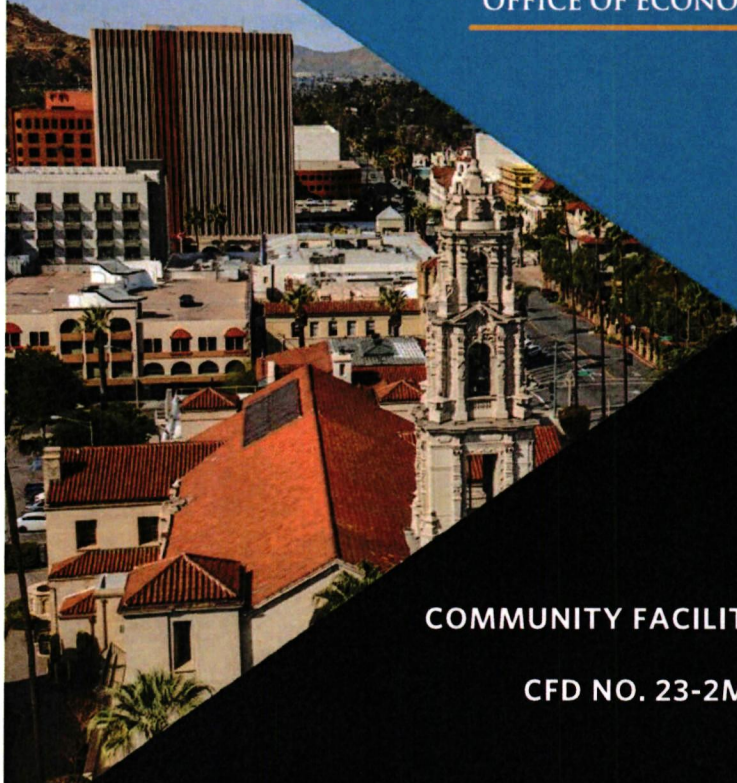


SUZANNE HOLLAND
Election Official

COUNTY OF RIVERSIDE
OFFICE OF ECONOMIC DEVELOPMENT



RIVERSIDE COUNTY
OFFICE OF ECONOMIC DEVELOPMENT



COMMUNITY FACILITIES DISTRICT REPORT

CFD NO. 23-2M (HIGHGROVE)

MAY 2023



SPICER CONSULTING
GROUP

Table of Contents

Sections

1	Introduction	1
2	Description of Services	3
3	Cost Estimate	4
4	Proposed Development	6
5	Rate and Method of Apportionment	7
6	Certifications	8

Tables

3-1	Cost Estimate – Special Tax A	4
3-2	Cost Estimate – Special Tax B	4

Appendices

A	Rate and Method of Apportionment
B	Boundary Map
C	Resolution of Intention

Introduction

This Community Facilities District (CFD) shall consist of all parcels of land within the residential subdivision known as Tract 38025-2. The services to be provided by CFD No. 23-2M (Highgrove) include: (i) Street lighting maintenance, which includes energy charges, operation, maintenance, and administration of street lighting located within the designated boundaries of the CFD; (ii) Traffic signal maintenance including energy charges, operation, maintenance, and administrative costs of traffic signal within the boundaries of the CFD; (iii) Administration, inspection, and maintenance of all stormwater facilities and BMPs to include: water quality basins, fossil filters, basin forebays, and all other NPDES/WQMP/BMP related devices and structures as approved and accepted by the Community Facilities District; administration includes, but is not limited to, quality control and assurance of inspections and maintenance, general contract management, scheduling of inspections and maintenance, and general oversight of all NPDES/WQMP/BMP operations; inspection includes, but is not limited to, travel time, visual inspection process and procedures for functionality, GPS location recording, assurance of proper vegetation, functioning irrigation, and citing operational or structural deficiencies, erosion, trash, silt and sediment build-up; and maintenance includes, but is not limited to, repair or replacement of any deficiencies noted during inspection, weed control and abatement, trash removal, and healthy upkeep of required plant materials; (iv) Park maintenance; (v) Graffiti abatement of walls and other permanent structures; and (vi) Enhanced sheriff services to include, but not be limited to, specialized and targeted enforcement within the boundaries of CFD 23-2M, which is in addition to those provided in the territory of the district before the district was created.

Administration includes, but is not limited to, quality control and assurance of inspections and maintenance, general contract management, scheduling of inspections and maintenance, and general oversight of all operations. Inspection includes, but is not limited to, travel time, visual inspection process and procedures to ensure maintained facilities functionality. Maintenance includes, but is not limited to, repair or replacement of any deficiencies noted during inspection.

The CFD is located within the unincorporated area of the County of Riverside and is generally east of California Avenue, south of Center Street, west of Garfield Avenue, and north of Spring Street. At full development, this CFD is projected to include 223 assessable detached single family residential lots/units. Refer to Appendix B, Boundary Map of this Report for the location of this CFD.

The Maximum Special Tax A within the CFD has been established to pay for these services with a special tax of \$352 per taxable unit per year for Residential Property and \$7,247 per acre per year for Multi-family Residential and Non-Residential Property; and the Maximum Special Tax B includes a special tax of \$120 per taxable unit per year for Residential Property and \$2,475 per acre per year for Multi-family Residential (as defined in the Rate and Method of Apportionment attached in Appendix A). These amounts shall be increased based upon the percentage change in the Consumer Price Index, with a minimum increase of two percent (2%) of the Maximum Special Tax in effect in the previous Fiscal Year.

Background

On March 28, 2023, the Board of Supervisors of the County of Riverside, State of California (Board) adopted a Resolution of Intention to form Community Facilities District No. 23-2M (Highgrove), Resolution No. 2023-036, (the "Resolution of Intention"), expressly ordering the preparation and filing of a written Report for a proposed Community Facilities District (Report) pursuant to the provisions of the "Mello-Roos Community Facilities Act of 1982", being Chapter 2.5, Part 1, Division 2, Title 5 of the Government Code of the State of California, (the "Act").

This Report is submitted pursuant to Section 53321.5 of the Act, as well as the Resolution of Intention. The law and the Resolution of Intention directs that said Community Facilities District Report generally contain the following:

1. A brief description of the services proposed to be financed from the levy of the special tax; and
2. A general cost estimate setting forth costs of providing such services; and
3. Further information regarding the implementation of the rate and method of apportionment of the special tax proposed to be levied within the CFD.

The Rate and Method of Apportionment of the Special Tax which was included in the Resolution of Intention and approved by the Board.

For particulars, reference is made to the Resolution of Intention as previously approved and adopted and is included in Appendix C.

NOW, THEREFORE, the undersigned, authorized representative of Spicer Consulting Group, LLC, the appointed responsible officer, or person directed to prepare the Report, does hereby submit the following data:

Description of the Services

The services which may be funded with proceeds of the special tax of the CFD, as provided by Section 53313 of the Act, will include all costs attributable to maintaining, servicing, cleaning, repairing and/or replacing landscaped areas (may include reserves for replacement) in public street right-of-way, public landscaping, public open spaces and other similar landscaped areas officially dedicated for public use. These services including the following:

- (a) Street lighting maintenance, which includes energy charges, operation, maintenance, and administration of street lighting located within the designated boundaries of the CFD; and
- (b) Traffic signal maintenance including energy charges, operation, maintenance, and administrative costs of traffic signal within the boundaries of the CFD; and
- (c) Administration, inspection, and maintenance of all stormwater facilities and BMPs to include: water quality basins, fossil filters, basin forebays, and all other NPDES/WQMP/BMP related devices and structures as approved and accepted by the Community Facilities District; administration includes, but is not limited to, quality control and assurance of inspections and maintenance, general contract management, scheduling of inspections and maintenance, and general oversight of all NPDES/WQMP/BMP operations; inspection includes, but is not limited to, travel time, visual inspection process and procedures for functionality, GPS location recording, assurance of proper vegetation, functioning irrigation, and citing operational or structural deficiencies, erosion, trash, silt and sediment build-up; and maintenance includes, but is not limited to, repair or replacement of any deficiencies noted during inspection, weed control and abatement, trash removal, and healthy upkeep of required plant materials; and
- (d) Park maintenance; and
- (e) Graffiti abatement of walls and other permanent structures; and
- (f) Enhanced sheriff services to include, but not be limited to, specialized and targeted enforcement within the boundaries of CFD 23-2M, which is in addition to those provided in the territory of the district before the district was created.

Administrative Expenses

In addition to payment of the cost and expense of the forgoing services, proceeds of the special tax may be expended to pay "Administrative Expenses," as said term is defined in the Rate and Method of Apportionment.

The above services shall be limited to those provided within the boundaries of CFD No. 23-2M (Highgrove) or for the benefit of the properties within the boundaries of the CFD, and said services may be financed by proceeds of the special tax of the CFD only to the extent that they are in addition to those provided in the territory of the CFD before CFD No. 23-2M (Highgrove) was created.

The services listed herein are representative of the types of services authorized to be financed by Community Facilities District No. 23-2M (Highgrove). Detailed scope and limits of specific projects will be determined as appropriate, consistent with the standards of the County of Riverside. Addition, deletion, or modification of descriptions of the services may be made consistent with the requirements of the Board of Supervisors of the County of Riverside, the Community Facilities District No. 23-2M, and the Act. The estimated cost for Fiscal Year 2022-23 of providing such services, based upon current dollars, which is subject to escalation, is as follows:

Services

The estimated annual cost of providing services at build-out for the subject properties are detailed below. The services funded by the special taxes of the CFD No. 23-2M (Highgrove), as outlined above, will be as follows:

Estimated Cost of Service

Special Tax A Service Costs - the costs to be covered shall be the direct costs for maintenance services including but not limited to (i) street lighting maintenance, (ii) traffic signal maintenance, (iii) maintenance and operation of water quality improvements, (iv) park maintenance; (v) graffiti abatement, (vi) fund an operating reserve for the costs of Services as determined by the Administrator, and (vii) Administrative Expenses.

The estimate breaks down the costs of providing one year's maintenance services for Fiscal Year 2022-23. These services are being funded by the levy of Special Tax A for Community Facilities District No. 23-2M (Highgrove).

Table 3-1
Cost Estimate – Special Tax A

Item	Description	Estimated Cost
1	Street Lighting	\$1,300
2	Traffic Signal	\$1,124
3	Drainage	\$10,050
4	Parks	\$42,716
5	Graffiti Abatement	\$6,244
6	Reserves	\$8,248
7	Administration	\$8,814
Total		\$78,496

Special Tax B Service Costs - the costs to be covered shall be the direct costs for maintenance services including but not limited to (i) sheriff services, included but not limited to specialized and targeted enforcement within the boundaries of the CFD, which is in addition to those provided in the territory of the CFD before the CFD was created (ii) fund an operating reserve for the costs of Services as determined by the Administrator, and (iii) Administrative Expenses.

The estimate breaks down the costs of providing one year's maintenance services for Fiscal Year 2022-23. These services are being funded by the levy of Special Tax B for Community Facilities District No. 23-2M (Highgrove).

Table 3-2
Cost Estimate – Special Tax B

Item	Description	Estimated Cost
1	Sheriff Service	\$22,474
2	Reserves	\$2,676
3	Administration	\$1,610
Total		\$26,760

Escalation of Maximum Special Taxes

Maximum Special Tax A On each July 1, shall be increased annually, commencing July 1, 2023, by the amount equal to the greater of two percent (2%) or up to the percentage increase in the Consumer Price Index of the corresponding Maximum Special Tax A in effect in the previous Fiscal Year at the sole discretion of the Administrator.

Maximum Special Tax B On each July 1, shall be increased annually, commencing July 1, 2023, by the amount equal to the greater of two percent (2%) or up to the percentage increase in the Consumer Price Index of the corresponding Maximum Special Tax B in effect in the previous Fiscal Year at the sole discretion of the Administrator.

Incidental Costs

The cost of the services shall include incidental expenses, including costs associated with formation of the CFD, determination of the amount of the special tax, collection of the special tax, payment of the special tax, costs incurred in order to carry out the authorized purposes of the CFD, and the costs of engineering, inspecting, coordinating, completing, planning, and designing the services, including the costs of environmental evaluations.

The following incidental expenses are examples of those that may be incurred in the formation of the CFD:

- ◆ Engineering services,
- ◆ Publishing, mailing and posting of notices
- ◆ Governmental notification and filing costs,
- ◆ Election costs, and
- ◆ Charges and fees of the County of Riverside other than those waived.

The CFD includes one tract that will consist of 223 future single family residential units located in the unincorporated Riverside County on approximately 13 gross acres. The property is generally east of California Avenue, south of Center Street, west of Garfield Avenue, and north of Spring Street. The CFD includes Assessor Parcel Numbers:

Assessor Parcel Numbers
255-060-028

The boundaries of the CFD are those properties and parcels where services are authorized to be provided and upon which special taxes may be levied in order to pay for the costs and expenses of said services. A general description of the area within the boundaries of the CFD is attached as Appendix B.

For details concerning the line and dimensions of the Assessor's Parcel Numbers refer to Riverside County Assessor's Maps. If any parcel submitted for collection is identified by the County Auditor-Controller to be an invalid parcel number for the current fiscal year, a corrected parcel number and/or new parcel number (or numbers) will be identified and resubmitted to the County Auditor- Controller. The special tax amount to be levied and collected for the resubmitted parcel and/or new parcel number(s) shall be based on the method of apportionment as defined in this Report. Therefore, if a single parcel has changed to multiple parcels, the assessment amount applied to each of the new parcels shall be recalculated and applied according to the approved method of apportionment and the special tax rate rather than as a proportionate share of the original special tax.

A reduced scale map showing the boundaries of the CFD is provided as Appendix B. A full-scale map is on file with the Clerk of the Board of Supervisors of Riverside County and was recorded with Riverside County Recorder on April 5, 2023, as Instrument No. 2023-0096960 in the Book 90 of Maps of Assessment and Community Facilities Districts at Page 96.

The Rate and Method of Apportionment allows each property owner within Community Facilities District No. 23-2M (Highgrove) to estimate the annual Special Tax amount that would be required for payment. The Rate and Method of Apportionment of the Special Tax established pursuant to these proceedings, is attached hereto as Appendix A (the "Rate and Method"). The Special Tax will be collected in the same manner and at the same time as ordinary ad valorem property taxes and shall be subject to the same penalties, the same procedure, sale and lien priority in the case of delinquency; provided, however, that the CFD Administrator may directly bill the Special Taxes, may collect Special Taxes at a different time or in a different manner if necessary to meet the financial obligations, and provided further that the CFD may covenant to foreclose and may actually foreclose on parcels having delinquent Special Taxes as permitted by the Act.

All of the property located within the CFD, unless exempted by law or by the Rate and Method proposed for the CFD, shall be taxed for the purpose of providing necessary services to serve the CFD.

Maximum Special Tax A and Maximum Special Tax B on each July 1, shall be increased annually, commencing July 1, 2023, by the amount equal to the greater of two percent (2%) or up to the percentage increase in the Consumer Price Index of the corresponding Maximum Special Tax in effect in the previous Fiscal Year at the sole discretion of the Administrator.

Pursuant to Section 53325.3 of the Act, the tax imposed "is a Special Tax and not a special assessment, and there is no requirement that the tax be apportioned on the basis of benefit to any property." The Special Tax may be based on the benefit received by property, the cost of making facilities or authorized services available or other reasonable basis as determined by the Board, although the Special Tax may not be apportioned on an ad valorem basis pursuant to Article XIII A of the California Constitution.

For particulars as to the Rate and Method for Community Facilities District No. 23-2M (Highgrove), see the attached and incorporated in Appendix A.

Based on the information provided herein, it is my opinion that the described services herein are those that are necessary to meet increased demands placed upon the County of Riverside as a result of development occurring within the CFD No. 23-2M (Highgrove) and benefits the lands within said CFD. Further, it is my opinion that the special tax rates and method of apportionment, as set forth herein, are fair and equitable, uniformly applied and not discriminating or arbitrary.

Date: May 2, 2023

SPICER CONSULTING GROUP, LLC



SHANE SPICER
SPECIAL TAX CONSULTANT FOR
CFD NO. 23-2M (HIGHGROVE)
COUNTY OF RIVERSIDE
STATE OF CALIFORNIA

APPENDIX A

Rate and Method of Apportionment



SPICER CONSULTING
GROUP

**RATE AND METHOD OF APPORTIONMENT OF SPECIAL TAX FOR
COMMUNITY FACILITIES DISTRICT NO. 23-2M (HIGHGROVE)
OF THE COUNTY OF RIVERSIDE
STATE OF CALIFORNIA**

A Special Tax (all capitalized terms are defined in Section A. Definitions, below) shall be applicable to each Parcel of Taxable Property located within the boundaries of Community Facilities District No. 23-2M (Highgrove) (the "CFD 23-2M" or "CFD"; defined below). The amount of Special Tax to be levied on a Parcel in each Fiscal Year, (defined below), commencing in Fiscal Year 2022-2023, shall be determined by the Riverside County Board of Supervisors, acting in its capacity as the legislative body of the CFD by applying the appropriate Special Tax as set forth in Sections B., C., and D., below. All property within the CFD, unless exempted by law or by the provisions of Section E., below, shall be taxed for the purposes, to the extent, and in the manner herein provided.

A. DEFINITIONS

The terms hereinafter set forth have the following meanings:

"Accessory Dwelling Unit(s)" means a residential unit of limited size, as defined in California Government Code Section 65852.2 that shares an Assessor's Parcel Number with Single Family Residential Property.

"Acre" or "Acreage" means the land area of a Parcel as shown on the most recent Assessor's Parcel Map, or if the land area is not shown on the Assessor's Parcel Map, the land area shown on the applicable Final Map, condominium plan, or other recorded County map. If the preceding maps are not available, the Acreage of an Assessor's Parcel Number may be determined utilizing Geographic Information System. The square footage of a Parcel is equal to the Acreage of such Parcel multiplied by 43,560.

"Act" means the Mello-Roos Community Facilities Act of 1982, as amended, being Chapter 2.5 of Part 1 of Division 2 of Title 5 of the Government Code of the State of California.

"Administrative Expenses" means all actual or reasonably estimated costs and expenses of the CFD that are chargeable or allocable to carry out the duties of the Administrator of the CFD as allowed by the Act, which shall include without limitation, all costs and expenses arising out of or resulting from the annual levy and collection of the Special Tax (whether by the County or designee thereof, or both), any litigation or appeal involving the CFD, and other administrative expenses of the County or designee thereof, or both, directly related to the CFD. Administrative Expenses shall also include amounts estimated or advanced by the County or CFD for attorney's fees and other costs related to commencing and pursuing to completion any foreclosure as a result of delinquent Special Taxes.

"Administrator" means an official of the County, or designee thereof, responsible for determining the Special Tax A Requirement and Special Tax B Requirement and providing for the levy and collection of the Special Taxes.

"Approved Property" means all Parcels of Taxable Property: (i) that are included in a Final Map that was recorded prior to the January 1st preceding the Fiscal Year in which the Special Tax is being levied, and (ii) that have not been issued a Building Permit(s) prior to the April 1st preceding the Fiscal Year in which the Special Tax is being levied.

"Assessor" means the Assessor of the County.

“Assessor’s Parcel Map” means an official map of the Assessor of the County designating a Parcel by an Assessor’s Parcel Number.

“Assessor’s Parcel Number” means the number assigned to a lot or Parcel for purposes of identification as determined from an Assessor Parcel Map.

“Board” means Riverside County Board of Supervisors, acting in its capacity as the legislative body of the CFD.

“Boundary Map” means a recorded map of the CFD which indicates by a boundary line the extent of the territory within the CFD identified to be subject to the levy of Special Taxes.

“Building Permit(s)” means a legal document(s) issued by a local agency that allows for new vertical construction of a building or buildings.

“Certificate of Occupancy” means a certificate of occupancy issued by the County in accordance with all applicable ordinances, regulations, and rule of the County and State law.

“CFD” or **“CFD 23-2M”** means Community Facilities District No. 23-2M (Highgrove) of the County of Riverside.

“Consumer Price Index” means the cumulative percentage increase in the Consumer Price Index (CPI) published by the U.S. Bureau of Labor Statistics for All Urban Consumers in the Riverside-San Bernardino-Ontario Area, as it stands in March of each year over the preceding Fiscal Year. In the event this index ceases to be published, the Consumer Price Index shall be another index as determined by the Administrator that is reasonably comparable to the Consumer Price Index for the Riverside-San Bernardino-Ontario Area. In the event that the percentage change in the annualized CPI is negative, the Special Tax shall not be decreased.

“County” means the County of Riverside, California.

“Developed Property” means for each Fiscal Year, all Parcels of Taxable Property: (i) that are included in a Final Map that was recorded prior to January 1st preceding the Fiscal Year in which the Special Taxes are being levied, and (ii) for which a Building Permit(s) for vertical construction has been issued prior to April 1st preceding the Fiscal Year in which the Special Taxes are being levied.

“Development Class” means either Developed Property, Approved Property, Taxable Property Owner’s Association Property, Taxable Public Property, or Undeveloped property.

“Dwelling Unit(s)” or **“(DU)”** means a residential building(s) that is used or intended to be used as a domicile by one or more persons, as determined by the Administrator.

“Exempt Property” means any Parcel which is exempt from Special Taxes pursuant to Section E., below.

“Final Map” means a subdivision of property by recordation of a tract map, parcel map or lot line adjustment, pursuant to the Subdivision Map Act (California Government Code Section 66410 *et seq.*) or recordation of a condominium plan pursuant to California Civil Code 4200 that creates individual lots for which Building Permit(s) may be issued without further subdivision.

“Fiscal Year” means the 12-month period starting on July 1 of any calendar year and ending the following June 30.

“Maximum Special Taxes” means the Maximum Special Tax A and/or Maximum Special Tax B to be levied in each Fiscal Year on each Parcel of Taxable Property in accordance with Section D., below to fund the Special Tax A Requirement and/or Special Tax B Requirement.

“Maximum Special Tax A” means for each Parcel in each Fiscal Year, the greatest amount of Special Tax A, determined in accordance with Section C., below, which may be levied on such Parcel in each Fiscal Year.

“Maximum Special Tax B” means for each Parcel in each Fiscal Year, the greatest amount of Special Tax B, determined in accordance with Section C., below, which may be levied on such Parcel in each Fiscal Year.

“Multi-family Residential Property” means all Parcels of Residential Property comprised of attached Dwelling Units available for rental by the general public, not for sale to an end user, and under common management.

“Non-Residential Property” means all Parcels of Developed Property for which a Building Permit(s) was issued permitting the construction of one or more non-residential structures.

“Parcel” means a lot or parcel within the CFD shown on an Assessor’s Parcel Map with an assigned Assessor’s Parcel Number valid as of July 1st for the Fiscal Year for which the Special Tax is being levied.

“Property Owner’s Association Property” means all Parcels which have been conveyed, dedicated to, or irrevocably offered for dedication to a home-owner’s association, condominium owner’s association or any master or sub-association, prior to April 1st preceding the Fiscal Year in which the Special Tax is being levied.

“Proportionately” means for each Parcel of Taxable Property that are Developed Property, Approved Property, Taxable Property Owner’s Association Property, Taxable Public Property or Undeveloped Property, that the ratio of the actual Special Tax levy to Maximum Special Tax A and Maximum Special Tax B, respectively, is the same for all Parcels assigned within each Development Class.

“Public Property” means all Parcels which, as of April 1st preceding the Fiscal Year in which the Special Tax is being levied, are (i) used for rights-of-way or any other purpose and is owned by, dedicated to, or irrevocably offered for dedication to the federal government, the State, the County, City or any other public agency, provided, however, that any property leased by a public agency to a private entity and subject to taxation under Section 53397.1 of the Act shall be taxed and classified according to its use; or (ii) encumbered by an unmanned utility easement making impractical its utilization for other than the purpose set forth in the easement.

“Residential Property” means all Parcels of Developed Property for which a Building Permit(s) has been issued permitting the construction of one or more residential Dwelling Units.

“Single Family Residential Property” means all Parcels of Residential Property, other than Multi-family Residential Property.

“Special Tax(es)” means the Special Tax A and/or Special Tax B amounts to be levied in each Fiscal Year on each Parcel of Taxable Property in accordance with Section D., below to fund the Special Tax A Requirement and/or Special Tax B Requirement.

“Special Tax A” means the annual special tax to be levied in each Fiscal Year on each Assessor’s Parcel of Taxable Property to fund the Special Tax A Requirement.

“Special Tax A Requirement” means that amount required in any Fiscal Year to: (i) pay the estimated cost of Special Tax A Services for such Fiscal Year as determined by the County; (ii) fund the Special Tax A Reserve Fund to the extent that the inclusion of such amount does not increase the Special Tax A for Undeveloped Property unless requested by the developer or the amount needed to fund the Special Tax Reserve Fund up to the Special Tax A Reserve Fund Requirement; (iii) pay Administrative Expenses; (iv) pay any anticipated Special Tax A delinquencies based on actual delinquencies from the prior Fiscal Year outstanding at the time the annual Special Tax levy is determined; and (v) less a credit for funds available to reduce the annual Special Tax A levy at the sole discretion of the Administrator.

“Special Tax A Reserve Fund Requirement” means an amount up to 150% of the anticipated annual cost of Special Tax A Services of \$78,496. The Special Tax A Reserve Fund Requirement shall be increased annually, commencing July 1, 2023, by the amount equal to the greater of two percent (2%) or up to the percentage increase in the Consumer Price Index of the corresponding Maximum Special Tax A in effect in the previous Fiscal Year at the sole discretion of the Administrator.

“Special Tax A Services” means services permitted under the Mello-Roos Community Facilities Act of 1982 including, without limitation, those services authorized to be funded by CFD 23-2M as set forth in the documents adopted by the Board at the time the CFD was formed.

“Special Tax B” means the annual special tax to be levied in each Fiscal Year on each Assessor’s Parcel of Taxable Property to fund the Special Tax B Requirement.

“Special Tax B Requirement” means that amount to be collected in any Fiscal Year to pay for certain costs as required to meet the needs of CFD 23-2M in the next Fiscal Year. The costs to be covered shall be: (i) the direct costs for enhanced sheriff services, (ii) fund an operating reserve fund for the costs of Special Tax B Services in an amount equal to the Special Tax B Reserve Fund Requirement as determined by the Administrator, and (iii) fund annual Administrative Expenses. Under no circumstances shall the Special Tax B Requirement include funds for bonds or other forms of indebtedness.

“Special Tax B Reserve Fund Requirement” means an amount up to 150% of the anticipated annual cost of Special Tax B Services of \$26,760. The Special Tax B Reserve Fund Requirement shall be increased annually, commencing July 1, 2023, by the amount equal to the greater of two percent (2%) or up to the percentage increase in the Consumer Price Index of the corresponding Maximum Special Tax B in effect in the previous Fiscal Year at the sole discretion of the Administrator.

“Special Tax B Services” means services permitted under the Mello-Roos Community Facilities Act of 1982 including, without limitation, enhanced sheriff services to include, but not be limited to, specialized and targeted enforcement within the boundaries of CFD 23-2M, which is in addition to those provided in the territory of the CFD before the CFD was created.

“State” means the State of California.

“Taxable Property” means all Parcels within the boundary of the CFD pursuant to the Boundary Map which are not exempt from the Special Taxes pursuant to Section E., below.

“Taxable Property Owner’s Association Property” means all Parcels of Property Owner’s Association Property that satisfies both of the following conditions: (i) based on reference to the maps used during the formation of the district, the Parcel was not anticipated to be Property Owner’s Association Property, as determined by the Administrator, and (ii) if the Parcel were to be exempt from the Special Taxes because it is Property Owner’s Association Property, the County has determined that there would be a reduction in Special Tax revenues that would create a deficit in funding the Special Tax A Requirement.

“Taxable Public Property” means all Parcels of Public Property that satisfies both of the following conditions: (i) based on reference to the maps used during the formation of the district, the Parcel was not anticipated to be Public Property, as determined by the Administrator, and (ii) if the Parcel were to be exempt from the Special Tax because it is Public Property, the County has determined that there would be a reduction in Special Tax revenues that would create a deficit in funding the Special Tax A Requirement.

“Taxable Unit” means either a Dwelling Unit(s) or an Acre.

“Undeveloped Property” means all Parcels of Taxable Property not classified as Developed Property, Approved Property, Taxable Property Owner’s Association Property or Taxable Public Property.

B. ASSIGNMENT TO DEVELOPMENT CLASS

Each Fiscal Year, commencing with Fiscal Year 2022-2023, all Parcels of Taxable Property shall be classified as either Developed Property, Approved Property, Taxable Property Owner’s Association Property, Taxable Public Property, or Undeveloped Property, and subject to the levy of Special Taxes in accordance with this Rate and Method of Apportionment as determined pursuant to Sections C. and D., below.

Parcels of Developed Property shall further be classified as Residential Property or Non-Residential Property. Parcels of Residential Property shall further be classified as Single Family Residential Property or Multi-family Residential Property as determined by the Administrator.

C. MAXIMUM SPECIAL TAXES

1. Special Tax A

a. Developed Property

(i) The Maximum Special Tax A that may be levied and escalated, as explained further in Section C.1.a. (ii) below, in each Fiscal Year for each Parcel classified as Developed Property shall be determined by reference to Table 1 below.

**TABLE 1
MAXIMUM SPECIAL TAX A
DEVELOPED PROPERTY
FISCAL YEAR 2022-2023**

Development Class	Taxable Unit	Maximum Special Tax A
Single Family Residential Property	DU	\$352
Multi-family Residential Property	Acre	\$7,247
Non-Residential Property	Acre	\$7,247

(ii) Increase in the Maximum Special Tax A

On each July 1, the Maximum Special Tax A identified in Table 1 above, shall be increased annually, commencing July 1, 2023, by the amount equal to the greater of two percent (2%) or up to the percentage increase in the Consumer Price Index of the corresponding Maximum Special Tax A in effect in the previous Fiscal Year at the sole discretion of the Administrator.

(iii) Multiple Development Classes

In some instances, a Parcel of Developed Property may contain more than one Development Class. The Maximum Special Tax A that may be levied on such Parcel shall be the sum of the Maximum Special Tax A that can be levied for each Development Class located on that Parcel. For a Parcel that contains two or more different Development Classes, the Acreage of such Parcel shall be allocated to each type of property based on the amount of Acreage designated for each land use as determined by reference to the site plan approved for such Parcel. The Administrator’s allocation to each Development Class shall be final.

Once a Maximum Special Tax A has been assigned to a Parcel of Developed Property, the Maximum Special Tax A shall not be reduced in future Fiscal Years regardless of changes in Development Class or Acreage, unless a reduction in the Maximum Special Tax A is approved by the Board for the entire CFD.

(iv) Accessory Dwelling Unit(s)

Where an Accessory Dwelling Unit(s) is on the same Assessor Parcel Number as another Taxable Unit, the Accessory Dwelling Unit(s) is not considered a separate Taxable Unit and will not be added to the calculation of the Maximum Special Tax A for a Parcel.

b. Approved Property

The Maximum Special Tax A for each Parcel of Approved Property shall be equal to the product of the applicable Undeveloped Property Maximum Special Tax A per Acre times the Acreage of such Parcel; provided, however, for a Parcel of Approved Property that is expected to become Single Family Residential Property as reasonably determined by the Administrator based on the Final Map for such Parcel, the Maximum Special Tax for such Parcel of Approved Property shall be

calculated pursuant to Section C.1., as if such Parcel were already designated as Developed Property and classified as Single Family Residential Property.

The Maximum Special Tax A for Approved Property shall be increased annually, commencing July 1, 2023, by the amount equal to the greater of two percent (2%) or up to the percentage increase in the Consumer Price Index of the corresponding Maximum Special Tax A in effect in the previous Fiscal Year at the sole discretion of the Administrator.

c. Taxable Property Owner's Association Property and Taxable Public Property

The Maximum Special Tax A for each Parcel of Taxable Property Owner's Association Property or Taxable Public Property shall be equal to the product of the applicable Undeveloped Property Maximum Special Tax A per Acre times the Acreage of such Parcel.

The Maximum Special Tax A for Taxable Property Owner's Association Property and Taxable Public Property shall be increased annually, commencing July 1, 2023, by the amount equal to the greater of two percent (2%) or up to the percentage increase in the Consumer Price Index of the corresponding Maximum Special Tax A in effect in the previous Fiscal Year at the sole discretion of the Administrator.

d. Undeveloped Property

The Maximum Special Tax A that may be levied and escalated for each Parcel classified as Undeveloped Property for each Parcel shall be \$7,247 per Acre.

The Maximum Special Tax A for Undeveloped Property shall be increased annually, commencing July 1, 2023, by the amount equal to the greater of two percent (2%) or up to the percentage increase in the Consumer Price Index of the corresponding Maximum Special Tax A in effect in the previous Fiscal Year at the sole discretion of the Administrator.

e. Public Property and/or Property Owner's Association Property

The Maximum Special Tax A that may be levied and escalated for each Parcel classified as Property Owner's Association Property and/or Public Property shall be \$0.00 per Acre. **There shall be no levy on Property Owner's Association Property and/or Public Property.**

2. Special Tax B

a. Developed Property

(i) The Maximum Special Tax B that may be levied and escalated, as explained further in Section C.2.a. (ii) below, in each Fiscal Year for each Parcel classified as Developed Property shall be determined by reference to Table 2 below.

**TABLE 2
MAXIMUM SPECIAL TAX B
DEVELOPED PROPERTY
FISCAL YEAR 2022-2023**

Development Class	Taxable Unit	Maximum Special Tax
Single Family Residential Property	DU	\$120
Multi-family Residential Property	Acre	\$2,475

(ii) Increase in the Maximum Special Tax B

On each July 1, the Maximum Special Tax B identified in Table 2 above, shall be increased annually, commencing July 1, 2023, by the amount equal to the greater of two percent (2%) or up to the percentage increase in the Consumer Price Index of the corresponding Maximum Special Tax B in effect in the previous Fiscal Year at the sole discretion of the Administrator.

The Special Tax B shall not be levied on Approved Property, Taxable Property Owner’s Association Property, Taxable Public Property, or Undeveloped Property.

D. METHOD OF APPORTIONMENT OF THE SPECIAL TAX A

1. Special Tax A

Commencing with Fiscal Year 2022-2023 and for each following Fiscal Year, the Administrator shall levy Special Tax A on all Taxable Property until the amount of Special Tax A equals the Special Tax A Requirement in accordance with the following steps:

First: Special Tax A shall be levied Proportionately on each Parcel of Developed Property at up to 100% of the applicable Maximum Special Tax A as needed to satisfy the Special Tax A Requirement;

Second: If additional moneys are needed to satisfy the Special Tax A Requirement after the first step has been completed, the Special Tax shall be levied Proportionately on each Parcel of Approved Property at up to 100% of the Maximum Special Tax A for Approved Property.

Third: If additional moneys are needed to satisfy the Special Tax A Requirement after the first two steps have been completed, the Special Tax A shall be levied Proportionately on each Parcel of Taxable Property Owner’s Associations Property up to 100% of the applicable Maximum Special Tax A for Taxable Property Owner’s Association.

Fourth: If additional moneys are needed to satisfy the Special Tax A Requirement after the first three steps have been completed, the Special Tax A shall be levied Proportionately on each Parcel of Taxable Public Property at up to 100% of the applicable Maximum Special Tax A for Taxable Public Property.

Fifth: If additional moneys are needed to satisfy the Special Tax A Requirement after the first four steps have been completed, the Special Tax A shall be levied Proportionately on each Parcel of

Undeveloped Property at up to 100% of the applicable Maximum Special Tax for Undeveloped Property.

2. Special Tax B

Commencing with Fiscal Year 2022-2023 and for each following Fiscal Year, the Administrator shall determine the Special Tax B Requirement and shall levy the Special Tax B until the aggregate amount of Special Tax B equals the Special Tax B Requirement.

The Special Tax B shall be levied Proportionately on all Assessor's Parcels of Developed Property at up to 100% of the applicable Maximum Special Tax B to satisfy the Special Tax B Requirement.

Notwithstanding the above, under no circumstances will Special Tax A or Special Tax B levied in any Fiscal Year against any Parcel of Residential Property for which a Certificate of Occupancy has been issued be increased by more than ten percent (10%) as a result of a delinquency in the payment of Special Tax A or Special Tax B applicable to any other Parcel above the amount that would have been levied in that Fiscal Year had there never been any such delinquency or default of the CFD.

E. EXEMPTIONS

The CFD shall not levy Special Taxes on Property Owner's Association Property (except Taxable Property Owner's Association Property) or Public Property (except Taxable Public Property) within the CFD.

F. MANNER OF COLLECTION

The Special Taxes shall be collected in the same manner and at the same time as ordinary *ad valorem* property taxes and shall be subject to the same penalties, the same procedure, sale and lien priority in the case of delinquency; provided, however, that the Administrator may directly bill the Special Taxes, may collect Special Taxes at a different time or in a different manner if necessary to meet the financial obligations of the CFD, and provided further that the CFD may covenant to foreclose and may actually foreclose on Parcels having delinquent Special Taxes as permitted by the Act.

G. APPEALS

Any taxpayer may file a written appeal of the Special Taxes on his/her Parcel(s) with the Administrator, provided that the appellant is current in his/her payments of Special Taxes. During pendency of an appeal, all Special Taxes must be paid on or before the payment due date established when the levy was made. The appeal must specify the reasons why the appellant claims the Special Tax is in error. The Administrator shall review the appeal, meet with the appellant if the Administrator deems necessary, and advise the appellant of its determination. If the Administrator agrees with the appellant, the Administrator shall grant a credit to eliminate or reduce future Special Taxes on the appellant's Parcel(s). No refunds of previously paid Special Taxes shall be made.

The Administrator shall interpret this Rate and Method of Apportionment and make determinations relative to the annual levy and administration of the Special Tax and any taxpayer who appeals, as herein specified.

H. PREPAYMENT OF SPECIAL TAXES

The Special Taxes may not be prepaid.

I. TERM OF THE SPECIAL TAXES

The Special Taxes shall be levied annually in perpetuity unless terminated earlier by the County.

APPENDIX B

Boundary Map



SPICER CONSULTING
GROUP

COPY 90/96

PROPOSED BOUNDARY MAP

COMMUNITY FACILITIES DISTRICT NO. 23-2M (HIGHGROVE)

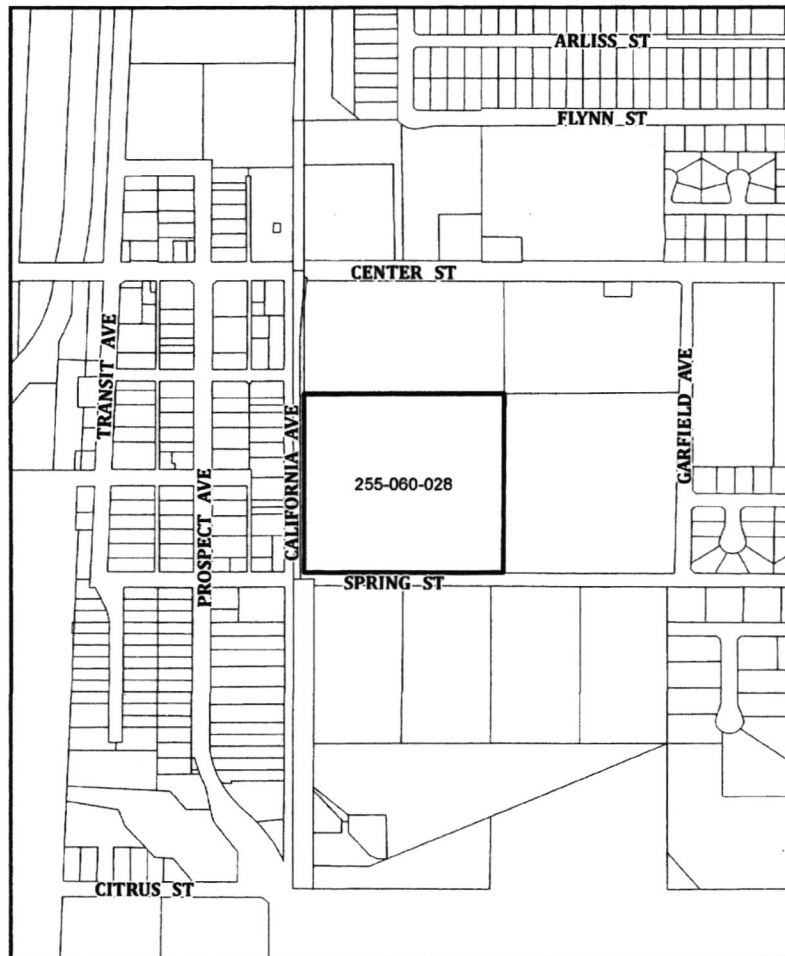
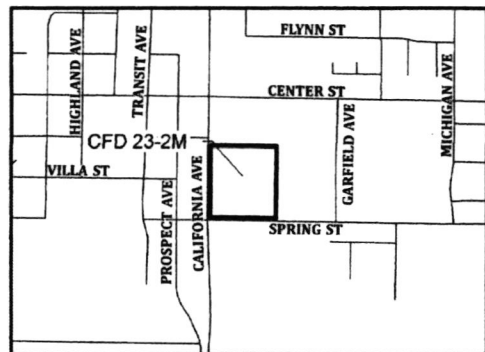
COUNTY OF RIVERSIDE, STATE OF CALIFORNIA

I HEREBY CERTIFY THAT THE WITHIN MAP SHOWING PROPOSED BOUNDARIES OF COMMUNITY FACILITIES DISTRICT NO. 23-2M (HIGHGROVE) COUNTY OF RIVERSIDE, STATE OF CALIFORNIA, WAS APPROVED BY THE BOARD OF SUPERVISORS AT A REGULAR MEETING THEREOF, HELD ON 28th DAY OF March, 2023, BY RESOLUTION NO. 2023-026


CLERK OF THE BOARD OF SUPERVISORS
COUNTY OF RIVERSIDE

FILED IN THE OFFICE OF THE CLERK OF THE BOARD OF SUPERVISORS OF THE COUNTY OF RIVERSIDE, STATE OF CALIFORNIA. THIS 28th DAY OF March, 2023.

Sue Maxwell (Deputy)
CLERK OF THE BOARD OF SUPERVISORS
COUNTY OF RIVERSIDE



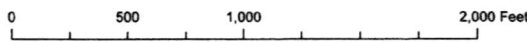
FILED THIS 5 DAY OF April, 2023 AT THE HOUR OF 11:03 O'CLOCK A.M. IN BOOK 90 OF MAPS OF ASSESSMENT AND COMMUNITY FACILITIES DISTRICTS AT PAGE 96, IN THE OFFICE OF THE COUNTY RECORDER, IN THE COUNTY OF RIVERSIDE, STATE OF CALIFORNIA.

FEE: \$ 9.00 NO.: 2023-0096960
PETER ALDANA, ASSESSOR, COUNTY CLERK, RECORDER





BY: Jackie Ott
DEPUTY



THIS BOUNDARY MAP CORRECTLY SHOWS THE BOUNDARIES OF THE COMMUNITY FACILITIES DISTRICT. FOR DETAILS CONCERNING THE LINES AND DIMENSIONS OF LOTS OR PARCEL REFER TO THE COUNTY ASSESSOR'S MAPS FOR FISCAL YEAR 2022-23.



LEGEND

-  CFD BOUNDARY
-  PARCEL LINE
-  COUNTY BOUNDARY
-  ASSESSOR PARCEL NUMBER



APPENDIX C
Resolution of Intention



SPICER CONSULTING
G R O U P

2 RESOLUTION NO. 2023-036

3
4 A RESOLUTION OF THE BOARD OF SUPERVISORS OF THE COUNTY OF RIVERSIDE OF
5 INTENTION TO ESTABLISH A COMMUNITY FACILITIES DISTRICT AND TO AUTHORIZE
6 THE LEVY OF SPECIAL TAXES AND SETTING A DATE AND TIME FOR A PUBLIC HEARING
7 THEREON

8
9 **WHEREAS**, a community facilities district may be established under the Mello-Roos Community
10 Facilities Act of 1982 (the "Act") in order to finance certain public capital facilities and services;

11 **WHEREAS**, proceedings for the establishment of a community facilities district under the Act
12 may be instituted following the receipt of a petition by the landowners of at least 10% of the area of land
13 proposed to be included within the territory of the community facilities district (a "Qualifying Petition")
14 and the furnishing of a deposit by the petitioners pursuant to Section 53318(d) of the Act ("Deposit");

15 **WHEREAS**, the Board of Supervisors of the County of Riverside constitutes the legislative body
16 of a local agency for purposes of the Act; and

17 **WHEREAS**, the Board of Supervisors has received both a Qualifying Petition and the Deposit
18 pursuant to the Act and therefore institutes proceedings to establish a community facilities district (the
19 "Community Facilities District") and to authorize the levy of special taxes therein in order to finance:

- 20 (i) Street lighting maintenance, which includes energy charges, operation, maintenance,
21 and administration of street lighting located within the designated boundaries of the CFD;
22 and
- 23 (ii) Traffic signal maintenance including energy charges, operation, maintenance, and
24 administrative costs of traffic signal within the boundaries of the CFD; and
- 25 (iii) Administration, inspection, and maintenance of all stormwater facilities and BMPs to
26 include: water quality basins, fossil filters, basin forebays, and all other
27 NPDES/WQMP/BMP related devices and structures as approved and accepted by the
28 Community Facilities District; administration includes, but is not limited to, quality control

FORM APPROVED COUNTY COUNSEL
BY: *[Signature]* DATE: 3/15/23
STEPHANIE K. NELSON

1 and assurance of inspections and maintenance, general contract management, scheduling of
2 inspections and maintenance, and general oversight of all NPDES/WQMP/BMP
3 operations; inspection includes, but is not limited to, travel time, visual inspection process
4 and procedures for functionality, GPS location recording, assurance of proper vegetation,
5 functioning irrigation, and citing operational or structural deficiencies, erosion, trash, silt
6 and sediment build-up; and maintenance includes, but is not limited to, repair or
7 replacement of any deficiencies noted during inspection, weed control and abatement, trash
8 removal, and healthy upkeep of required plant materials; and

9 (iv) Park maintenance; and

10 (v) Graffiti abatement of walls and other permanent structures; and

11 (vi) Enhanced sheriff services to include, but not be limited to, specialized and targeted
12 enforcement within the boundaries of CFD 23-2M, which is in addition to those provided
13 in the territory of the district before the district was created; and

14 (vii) The cost associated with the creation of the CFD, determination of the amount of taxes,
15 collection of taxes, including litigation expenses, if any, costs for processing payment of
16 taxes, or other administrative costs otherwise incurred in order to carry out the authorized
17 purposes of the CFD; and

18 (viii) Any other expenses incidental to the performance and inspection of the authorized
19 Services.

20 **NOW, THEREFORE, BE IT RESOLVED, DETERMINED AND ORDERED BY** the Board
21 of Supervisors of the County of Riverside, State of California (the "Board of Supervisors") in regular
22 session assembled on March 28, 2023 at 9:30 a.m. or soon thereafter, in the meeting room of the Board of
23 Supervisors, located on the first floor of the County Administrative Center, 4080 Lemon Street, Riverside,
24 California as follows:

25 **Section 1.** The Board of Supervisors proposes to establish a community facilities district under
26 the terms of the Act. The boundaries of the territory proposed for inclusion in the Community Facilities
27 District are described in the map showing the proposed Community Facilities District (the "Boundary
28 Map") on file with the Clerk of the Board of Supervisors (the "Clerk"), which boundaries are hereby

1 preliminarily approved and to which map reference is hereby made for further particulars. The Clerk is
2 hereby directed to sign the original Boundary Map and record, or cause to be recorded, the Boundary Map
3 with all proper endorsements thereon in the office of the Riverside County Recorder within 15 days of the
4 date of adoption of this resolution, all as required by Section 3111 of the California Streets and Highways
5 Code.

6 **Section 2.** The name proposed for the Community Facilities District is "Community Facilities
7 District No. 23-2M (Highgrove) of the County of Riverside."

8 **Section 3.** The services (the "Services") proposed to be financed by the Community Facilities
9 District pursuant to the Act are described in Exhibit A attached hereto and as follows:

- 10 (i) Street lighting maintenance, which includes energy charges, operation, maintenance,
11 and administration of street lighting located within the designated boundaries of the CFD;
12 and
- 13 (ii) Traffic signal maintenance including energy charges, operation, maintenance, and
14 administrative costs of traffic signal within the boundaries of the CFD; and
- 15 (iii) Administration, inspection, and maintenance of all stormwater facilities and BMPs to
16 include: water quality basins, fossil filters, basin forebays, and all other
17 NPDES/WQMP/BMP related devices and structures as approved and accepted by the
18 Community Facilities District; administration includes, but is not limited to, quality control
19 and assurance of inspections and maintenance, general contract management, scheduling of
20 inspections and maintenance, and general oversight of all NPDES/WQMP/BMP
21 operations; inspection includes, but is not limited to, travel time, visual inspection process
22 and procedures for functionality, GPS location recording, assurance of proper vegetation,
23 functioning irrigation, and citing operational or structural deficiencies, erosion, trash, silt
24 and sediment build-up; and maintenance includes, but is not limited to, repair or
25 replacement of any deficiencies noted during inspection, weed control and abatement, trash
26 removal, and healthy upkeep of required plant materials; and
- 27 (iv) Park maintenance; and
- 28 (v) Graffiti abatement of walls and other permanent structures; and

- 1 (vi) Enhanced sheriff services to include, but not be limited to, specialized and targeted
2 enforcement within the boundaries of CFD 23-2M, which is in addition to those provided
3 in the territory of the district before the district was created; and
- 4 (vii) The cost associated with the creation of the CFD, determination of the amount of taxes,
5 collection of taxes, including litigation expenses, if any, costs for processing payment of
6 taxes, or other administrative costs otherwise incurred in order to carry out the authorized
7 purposes of the CFD; and
- 8 (viii) Any other expenses incidental to the performance and inspection of the authorized
9 Services.

10 **Section 4.** Except where funds are otherwise available, a special tax sufficient to pay for all
11 Services, secured by recordation of a continuing lien against all nonexempt real property in the
12 Community Facilities District, will be annually levied within the Community Facilities District. The rate
13 and method of apportionment of the special tax (the "Rate and Method"), in sufficient detail to allow each
14 landowner within the proposed Community Facilities District to estimate the maximum amount that he or
15 she will have to pay, is described in Exhibit B attached hereto, which is by this reference incorporated
16 herein. The special tax will be collected in the same manner as ordinary *ad valorem* property taxes or in
17 such other manner as the Board of Supervisors shall determine, including direct billing of the affected
18 property owners. The special tax shall be levied annually until terminated by the Board of Supervisors as
19 specified in the Rate and Method.

20 **Section 5.** The Board of Supervisors hereby sets the matter for public hearing on May 2, 2023, at
21 9:30 am, or as soon thereafter as the Board of Supervisors will consider the matter, at the meeting room of
22 the Board of Supervisors, located on the first floor of the County Administrative Center, 4080 Lemon
23 Street, 1st Floor, Riverside, California, as the time and place when and where the Board of Supervisors
24 will conduct a public hearing on the establishment of the Community Facilities District and the levy of the
25 special tax therein.

26 **Section 6.** The Clerk is hereby directed to publish, or cause to be published, a notice of said
27 public hearing, as prepared and approved by County Counsel, one time in *The Press Enterprise*, a
28 newspaper of general circulation published in the area of the Community Facilities District. The

1 publication of said notice shall be completed at least seven days prior to the date set for public hearing.

2 Said notice shall contain the information prescribed by Section 53322 of the Government Code.

3 The Clerk is hereby further directed to give notice of said public hearing, as prepared and
4 approved by County Counsel, by first-class mail to each registered voter and to each landowner within the
5 Community Facilities District. Said notice shall be mailed at least 15 days prior to the date set for public
6 hearing and shall contain the same information as is required to be contained in the notice published
7 pursuant to Section 53322 of the Government Code.

8 **Section 7.** The levy of said proposed special tax shall be subject to the approval of the qualified
9 electors of the Community Facilities District at a special election. The proposed voting procedure shall be
10 by mailed or hand-delivered ballot among the landowners in the Community Facilities District, with each
11 owner having one vote for each acre or portion of an acre such owner owns in the Community Facilities
12 District.

13 **Section 8.** Each officer of the County of Riverside who is or will be responsible for providing one
14 or more of the proposed types of Services is hereby directed to study, or cause to be studied, the proposed
15 Community Facilities District and, at or before said public hearing, file a report with the Board of
16 Supervisors containing a brief description of the Services by type which will in his or her opinion be
17 required to adequately meet the needs of the Community Facilities District, and his or her estimate of the
18 cost of providing the Services. Such officers are hereby also directed to estimate the fair and reasonable
19 cost of the incidental expenses proposed to be paid. Such report shall be made a part of the record of said
20 public hearing.

21 **Section 9.** In the opinion of the Board of Supervisors, the public interest will not be served by
22 allowing the property owners within the proposed Community Facilities District to enter into a contract in
23 accordance with subdivision (a) of Section 53329.5 of the Government Code and, accordingly, the Board
24 of Supervisors hereby provides that such property owners may not enter into a contract in accordance with
25 said subdivision.

26 **Section 10.** The officers of the County of Riverside are, and each of them is, hereby authorized
27 and directed to do any and all things, and to execute and deliver any and all documents which said officers
28

1 may deem necessary or advisable in order to accomplish the purposes of this resolution and not
2 inconsistent with the provisions hereof.

3

4 **ADOPTED, SIGNED AND APPROVED** this 28th day of March, 2023, by the Board of
5 Supervisors of the County of Riverside.

6 //

7 //

8

9

10



Chair of the Board of Supervisors

Kevin Jefferies

11

12 ATTEST:

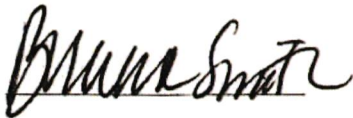
13

14 Kimberley A. Rector

15 Clerk of the Board of Supervisors

16

17 By:



18

Deputy

19

ROLL CALL:

20

Ayes: Jeffries, Spiegel, Washington, Perez and Gutierrez

21

Nays: None

22

Absent: None

23

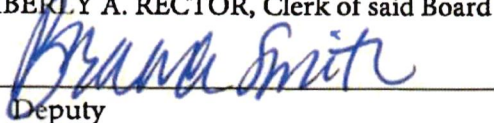
The foregoing is certified to be a true copy of a resolution duly adopted by said Board of Supervisors on
24 the date therein set forth.

25

KIMBERLY A. RECTOR, Clerk of said Board

26

By:



27

Deputy

28

03.28.2023 3.11

1 **Incidental Expenses**

2 The incidental expenses proposed to be incurred include the following:

- 3 (i) The cost associated with the creation of the Community Facilities District, determination
4 of the amount of taxes, collection of taxes, including litigation expenses, if any, costs for
5 processing payment of taxes, or other administrative costs otherwise incurred in order to
6 carry out the authorized purposes of the Community Facilities District; and
7 (ii) Any other expenses incidental to the performance and inspection of the authorized
8 Services.

9
10
11
12
13
14
15
16
17
18
19
20
21
22
23
24
25
26
27
28

1
2
3
4
5
6
7
8
9
10
11
12
13
14
15
16
17
18
19
20
21
22
23
24
25
26
27
28

EXHIBIT B

PROPOSED RATE AND METHOD OF APPORTIONMENT OF SPECIAL TAX

(See Attached)

**RATE AND METHOD OF APPORTIONMENT OF SPECIAL TAX FOR
COMMUNITY FACILITIES DISTRICT NO. 23-2M (HIGHGROVE)
OF THE COUNTY OF RIVERSIDE
STATE OF CALIFORNIA**

A Special Tax (all capitalized terms are defined in Section A. Definitions, below) shall be applicable to each Parcel of Taxable Property located within the boundaries of Community Facilities District No. 23-2M (Highgrove) (the "CFD 23-2M" or "CFD"; defined below). The amount of Special Tax to be levied on a Parcel in each Fiscal Year, (defined below), commencing in Fiscal Year 2022-2023, shall be determined by the Riverside County Board of Supervisors, acting in its capacity as the legislative body of the CFD by applying the appropriate Special Tax as set forth in Sections B., C., and D., below. All property within the CFD, unless exempted by law or by the provisions of Section E., below, shall be taxed for the purposes, to the extent, and in the manner herein provided.

A. DEFINITIONS

The terms hereinafter set forth have the following meanings:

"Accessory Dwelling Unit(s)" means a residential unit of limited size, as defined in California Government Code Section 65852.2 that shares an Assessor's Parcel Number with Single Family Residential Property.

"Acre" or "Acreage" means the land area of a Parcel as shown on the most recent Assessor's Parcel Map, or if the land area is not shown on the Assessor's Parcel Map, the land area shown on the applicable Final Map, condominium plan, or other recorded County map. If the preceding maps are not available, the Acreage of an Assessor's Parcel Number may be determined utilizing Geographic Information System. The square footage of a Parcel is equal to the Acreage of such Parcel multiplied by 43,560.

"Act" means the Mello-Roos Community Facilities Act of 1982, as amended, being Chapter 2.5 of Part 1 of Division 2 of Title 5 of the Government Code of the State of California.

"Administrative Expenses" means all actual or reasonably estimated costs and expenses of the CFD that are chargeable or allocable to carry out the duties of the Administrator of the CFD as allowed by the Act, which shall include without limitation, all costs and expenses arising out of or resulting from the annual levy and collection of the Special Tax (whether by the County or designee thereof, or both), any litigation or appeal involving the CFD, and other administrative expenses of the County or designee thereof, or both, directly related to the CFD. Administrative Expenses shall also include amounts estimated or advanced by the County or CFD for attorney's fees and other costs related to commencing and pursuing to completion any foreclosure as a result of delinquent Special Taxes.

"Administrator" means an official of the County, or designee thereof, responsible for determining the Special Tax A Requirement and Special Tax B Requirement and providing for the levy and collection of the Special Taxes.

"Approved Property" means all Parcels of Taxable Property: (i) that are included in a Final Map that was recorded prior to the January 1st preceding the Fiscal Year in which the Special Tax is being levied, and (ii) that have not been issued a Building Permit(s) prior to the April 1st preceding the Fiscal Year in which the Special Tax is being levied.

"Assessor" means the Assessor of the County.

“Assessor’s Parcel Map” means an official map of the Assessor of the County designating a Parcel by an Assessor’s Parcel Number.

“Assessor’s Parcel Number” means the number assigned to a lot or Parcel for purposes of identification as determined from an Assessor Parcel Map.

“Board” means Riverside County Board of Supervisors, acting in its capacity as the legislative body of the CFD.

“Boundary Map” means a recorded map of the CFD which indicates by a boundary line the extent of the territory within the CFD identified to be subject to the levy of Special Taxes.

“Building Permit(s)” means a legal document(s) issued by a local agency that allows for new vertical construction of a building or buildings.

“Certificate of Occupancy” means a certificate of occupancy issued by the County in accordance with all applicable ordinances, regulations, and rule of the County and State law.

“CFD” or **“CFD 23-2M”** means Community Facilities District No. 23-2M (Highgrove) of the County of Riverside.

“Consumer Price Index” means the cumulative percentage increase in the Consumer Price Index (CPI) published by the U.S. Bureau of Labor Statistics for All Urban Consumers in the Riverside-San Bernardino-Ontario Area, as it stands in March of each year over the preceding Fiscal Year. In the event this index ceases to be published, the Consumer Price Index shall be another index as determined by the Administrator that is reasonably comparable to the Consumer Price Index for the Riverside-San Bernardino-Ontario Area. In the event that the percentage change in the annualized CPI is negative, the Special Tax shall not be decreased.

“County” means the County of Riverside, California.

“Developed Property” means for each Fiscal Year, all Parcels of Taxable Property: (i) that are included in a Final Map that was recorded prior to January 1st preceding the Fiscal Year in which the Special Taxes are being levied, and (ii) for which a Building Permit(s) for vertical construction has been issued prior to April 1st preceding the Fiscal Year in which the Special Taxes are being levied.

“Development Class” means either Developed Property, Approved Property, Taxable Property Owner’s Association Property, Taxable Public Property, or Undeveloped property.

“Dwelling Unit(s)” or **“(DU)”** means a residential building(s) that is used or intended to be used as a domicile by one or more persons, as determined by the Administrator.

“Exempt Property” means any Parcel which is exempt from Special Taxes pursuant to Section E., below.

“Final Map” means a subdivision of property by recordation of a tract map, parcel map or lot line adjustment, pursuant to the Subdivision Map Act (California Government Code Section 66410 *et seq.*) or recordation of a condominium plan pursuant to California Civil Code 4200 that creates individual lots for which Building Permit(s) may be issued without further subdivision.

“Fiscal Year” means the 12-month period starting on July 1 of any calendar year and ending the following June 30.

“Maximum Special Taxes” means the Maximum Special Tax A and/or Maximum Special Tax B to be levied in each Fiscal Year on each Parcel of Taxable Property in accordance with Section D., below to fund the Special Tax A Requirement and/or Special Tax B Requirement.

“Maximum Special Tax A” means for each Parcel in each Fiscal Year, the greatest amount of Special Tax A, determined in accordance with Section C., below, which may be levied on such Parcel in each Fiscal Year.

“Maximum Special Tax B” means for each Parcel in each Fiscal Year, the greatest amount of Special Tax B, determined in accordance with Section C., below, which may be levied on such Parcel in each Fiscal Year.

“Multi-family Residential Property” means all Parcels of Residential Property comprised of attached Dwelling Units available for rental by the general public, not for sale to an end user, and under common management.

“Non-Residential Property” means all Parcels of Developed Property for which a Building Permit(s) was issued permitting the construction of one or more non-residential structures.

“Parcel” means a lot or parcel within the CFD shown on an Assessor’s Parcel Map with an assigned Assessor’s Parcel Number valid as of July 1st for the Fiscal Year for which the Special Tax is being levied.

“Property Owner’s Association Property” means all Parcels which have been conveyed, dedicated to, or irrevocably offered for dedication to a home-owner’s association, condominium owner’s association or any master or sub-association, prior to April 1st preceding the Fiscal Year in which the Special Tax is being levied.

“Proportionately” means for each Parcel of Taxable Property that are Developed Property, Approved Property, Taxable Property Owner’s Association Property, Taxable Public Property or Undeveloped Property, that the ratio of the actual Special Tax levy to Maximum Special Tax A and Maximum Special Tax B, respectively, is the same for all Parcels assigned within each Development Class.

“Public Property” means all Parcels which, as of April 1st preceding the Fiscal Year in which the Special Tax is being levied, are (i) used for rights-of-way or any other purpose and is owned by, dedicated to, or irrevocably offered for dedication to the federal government, the State, the County, City or any other public agency, provided, however, that any property leased by a public agency to a private entity and subject to taxation under Section 53397.1 of the Act shall be taxed and classified according to its use; or (ii) encumbered by an unmanned utility easement making impractical its utilization for other than the purpose set forth in the easement.

“Residential Property” means all Parcels of Developed Property for which a Building Permit(s) has been issued permitting the construction of one or more residential Dwelling Units.

“Single Family Residential Property” means all Parcels of Residential Property, other than Multi-family Residential Property.

“Special Tax(es)” means the Special Tax A and/or Special Tax B amounts to be levied in each Fiscal Year on each Parcel of Taxable Property in accordance with Section D., below to fund the Special Tax A Requirement and/or Special Tax B Requirement.

“Special Tax A” means the annual special tax to be levied in each Fiscal Year on each Assessor’s Parcel of Taxable Property to fund the Special Tax A Requirement.

“Special Tax A Requirement” means that amount required in any Fiscal Year to: (i) pay the estimated cost of Special Tax A Services for such Fiscal Year as determined by the County; (ii) fund the Special Tax A Reserve Fund to the extent that the inclusion of such amount does not increase the Special Tax A for Undeveloped Property unless requested by the developer or the amount needed to fund the Special Tax Reserve Fund up to the Special Tax A Reserve Fund Requirement; (iii) pay Administrative Expenses; (iv) pay any anticipated Special Tax A delinquencies based on actual delinquencies from the prior Fiscal Year outstanding at the time the annual Special Tax levy is determined; and (v) less a credit for funds available to reduce the annual Special Tax A levy at the sole discretion of the Administrator.

“Special Tax A Reserve Fund Requirement” means an amount up to 150% of the anticipated annual cost of Special Tax A Services of \$78,496. The Special Tax A Reserve Fund Requirement shall be increased annually, commencing July 1, 2023, by the amount equal to the greater of two percent (2%) or up to the percentage increase in the Consumer Price Index of the corresponding Maximum Special Tax A in effect in the previous Fiscal Year at the sole discretion of the Administrator.

“Special Tax A Services” means services permitted under the Mello-Roos Community Facilities Act of 1982 including, without limitation, those services authorized to be funded by CFD 23-2M as set forth in the documents adopted by the Board at the time the CFD was formed.

“Special Tax B” means the annual special tax to be levied in each Fiscal Year on each Assessor’s Parcel of Taxable Property to fund the Special Tax B Requirement.

“Special Tax B Requirement” means that amount to be collected in any Fiscal Year to pay for certain costs as required to meet the needs of CFD 23-2M in the next Fiscal Year. The costs to be covered shall be: (i) the direct costs for enhanced sheriff services, (ii) fund an operating reserve fund for the costs of Special Tax B Services in an amount equal to the Special Tax B Reserve Fund Requirement as determined by the Administrator, and (iii) fund annual Administrative Expenses. Under no circumstances shall the Special Tax B Requirement include funds for bonds or other forms of indebtedness.

“Special Tax B Reserve Fund Requirement” means an amount up to 150% of the anticipated annual cost of Special Tax B Services of \$26,760. The Special Tax B Reserve Fund Requirement shall be increased annually, commencing July 1, 2023, by the amount equal to the greater of two percent (2%) or up to the percentage increase in the Consumer Price Index of the corresponding Maximum Special Tax B in effect in the previous Fiscal Year at the sole discretion of the Administrator.

“Special Tax B Services” means services permitted under the Mello-Roos Community Facilities Act of 1982 including, without limitation, enhanced sheriff services to include, but not be limited to, specialized and targeted enforcement within the boundaries of CFD 23-2M, which is in addition to those provided in the territory of the CFD before the CFD was created.

“State” means the State of California.

“Taxable Property” means all Parcels within the boundary of the CFD pursuant to the Boundary Map which are not exempt from the Special Taxes pursuant to Section E., below.

“Taxable Property Owner’s Association Property” means all Parcels of Property Owner’s Association Property that satisfies both of the following conditions: (i) based on reference to the maps used during the formation of the district, the Parcel was not anticipated to be Property Owner’s Association Property, as determined by the Administrator, and (ii) if the Parcel were to be exempt from the Special Taxes because it is Property Owner’s Association Property, the County has determined that there would be a reduction in Special Tax revenues that would create a deficit in funding the Special Tax A Requirement.

“Taxable Public Property” means all Parcels of Public Property that satisfies both of the following conditions: (i) based on reference to the maps used during the formation of the district, the Parcel was not anticipated to be Public Property, as determined by the Administrator, and (ii) if the Parcel were to be exempt from the Special Tax because it is Public Property, the County has determined that there would be a reduction in Special Tax revenues that would create a deficit in funding the Special Tax A Requirement.

“Taxable Unit” means either a Dwelling Unit(s) or an Acre.

“Undeveloped Property” means all Parcels of Taxable Property not classified as Developed Property, Approved Property, Taxable Property Owner’s Association Property or Taxable Public Property.

B. ASSIGNMENT TO DEVELOPMENT CLASS

Each Fiscal Year, commencing with Fiscal Year 2022-2023, all Parcels of Taxable Property shall be classified as either Developed Property, Approved Property, Taxable Property Owner’s Association Property, Taxable Public Property, or Undeveloped Property, and subject to the levy of Special Taxes in accordance with this Rate and Method of Apportionment as determined pursuant to Sections C. and D., below.

Parcels of Developed Property shall further be classified as Residential Property or Non-Residential Property. Parcels of Residential Property shall further be classified as Single Family Residential Property or Multi-family Residential Property as determined by the Administrator.

C. MAXIMUM SPECIAL TAXES

1. Special Tax A

a. Developed Property

(i) The Maximum Special Tax A that may be levied and escalated, as explained further in Section C.1.a. (ii) below, in each Fiscal Year for each Parcel classified as Developed Property shall be determined by reference to Table 1 below.

**TABLE 1
 MAXIMUM SPECIAL TAX A
 DEVELOPED PROPERTY
 FISCAL YEAR 2022-2023**

Development Class	Taxable Unit	Maximum Special Tax A
Single Family Residential Property	DU	\$352
Multi-family Residential Property	Acre	\$7,247
Non-Residential Property	Acre	\$7,247

(ii) Increase in the Maximum Special Tax A

On each July 1, the Maximum Special Tax A identified in Table 1 above, shall be increased annually, commencing July 1, 2023, by the amount equal to the greater of two percent (2%) or up to the percentage increase in the Consumer Price Index of the corresponding Maximum Special Tax A in effect in the previous Fiscal Year at the sole discretion of the Administrator.

(iii) Multiple Development Classes

In some instances, a Parcel of Developed Property may contain more than one Development Class. The Maximum Special Tax A that may be levied on such Parcel shall be the sum of the Maximum Special Tax A that can be levied for each Development Class located on that Parcel. For a Parcel that contains two or more different Development Classes, the Acreage of such Parcel shall be allocated to each type of property based on the amount of Acreage designated for each land use as determined by reference to the site plan approved for such Parcel. The Administrator’s allocation to each Development Class shall be final.

Once a Maximum Special Tax A has been assigned to a Parcel of Developed Property, the Maximum Special Tax A shall not be reduced in future Fiscal Years regardless of changes in Development Class or Acreage, unless a reduction in the Maximum Special Tax A is approved by the Board for the entire CFD.

(iv) Accessory Dwelling Unit(s)

Where an Accessory Dwelling Unit(s) is on the same Assessor Parcel Number as another Taxable Unit, the Accessory Dwelling Unit(s) is not considered a separate Taxable Unit and will not be added to the calculation of the Maximum Special Tax A for a Parcel.

b. Approved Property

The Maximum Special Tax A for each Parcel of Approved Property shall be equal to the product of the applicable Undeveloped Property Maximum Special Tax A per Acre times the Acreage of such Parcel; provided, however, for a Parcel of Approved Property that is expected to become Single Family Residential Property as reasonably determined by the Administrator based on the Final Map for such Parcel, the Maximum Special Tax for such Parcel of Approved Property shall be

calculated pursuant to Section C.1., as if such Parcel were already designated as Developed Property and classified as Single Family Residential Property.

The Maximum Special Tax A for Approved Property shall be increased annually, commencing July 1, 2023, by the amount equal to the greater of two percent (2%) or up to the percentage increase in the Consumer Price Index of the corresponding Maximum Special Tax A in effect in the previous Fiscal Year at the sole discretion of the Administrator.

c. Taxable Property Owner's Association Property and Taxable Public Property

The Maximum Special Tax A for each Parcel of Taxable Property Owner's Association Property or Taxable Public Property shall be equal to the product of the applicable Undeveloped Property Maximum Special Tax A per Acre times the Acreage of such Parcel.

The Maximum Special Tax A for Taxable Property Owner's Association Property and Taxable Public Property shall be increased annually, commencing July 1, 2023, by the amount equal to the greater of two percent (2%) or up to the percentage increase in the Consumer Price Index of the corresponding Maximum Special Tax A in effect in the previous Fiscal Year at the sole discretion of the Administrator.

d. Undeveloped Property

The Maximum Special Tax A that may be levied and escalated for each Parcel classified as Undeveloped Property for each Parcel shall be \$7,247 per Acre.

The Maximum Special Tax A for Undeveloped Property shall be increased annually, commencing July 1, 2023, by the amount equal to the greater of two percent (2%) or up to the percentage increase in the Consumer Price Index of the corresponding Maximum Special Tax A in effect in the previous Fiscal Year at the sole discretion of the Administrator.

e. Public Property and/or Property Owner's Association Property

The Maximum Special Tax A that may be levied and escalated for each Parcel classified as Property Owner's Association Property and/or Public Property shall be \$0.00 per Acre. **There shall be no levy on Property Owner's Association Property and/or Public Property.**

2. Special Tax B

a. Developed Property

(i) The Maximum Special Tax B that may be levied and escalated, as explained further in Section C.2.a. (ii) below, in each Fiscal Year for each Parcel classified as Developed Property shall be determined by reference to Table 2 below.

**TABLE 2
MAXIMUM SPECIAL TAX B
DEVELOPED PROPERTY
FISCAL YEAR 2022-2023**

Development Class	Taxable Unit	Maximum Special Tax
Single Family Residential Property	DU	\$120
Multi-family Residential Property	Acre	\$2,475

(ii) Increase in the Maximum Special Tax B

On each July 1, the Maximum Special Tax B identified in Table 2 above, shall be increased annually, commencing July 1, 2023, by the amount equal to the greater of two percent (2%) or up to the percentage increase in the Consumer Price Index of the corresponding Maximum Special Tax B in effect in the previous Fiscal Year at the sole discretion of the Administrator.

The Special Tax B shall not be levied on Approved Property, Taxable Property Owner’s Association Property, Taxable Public Property, or Undeveloped Property.

D. METHOD OF APPORTIONMENT OF THE SPECIAL TAX A

1. Special Tax A

Commencing with Fiscal Year 2022-2023 and for each following Fiscal Year, the Administrator shall levy Special Tax A on all Taxable Property until the amount of Special Tax A equals the Special Tax A Requirement in accordance with the following steps:

First: Special Tax A shall be levied Proportionately on each Parcel of Developed Property at up to 100% of the applicable Maximum Special Tax A as needed to satisfy the Special Tax A Requirement;

Second: If additional moneys are needed to satisfy the Special Tax A Requirement after the first step has been completed, the Special Tax shall be levied Proportionately on each Parcel of Approved Property at up to 100% of the Maximum Special Tax A for Approved Property.

Third: If additional moneys are needed to satisfy the Special Tax A Requirement after the first two steps have been completed, the Special Tax A shall be levied Proportionately on each Parcel of Taxable Property Owner’s Associations Property up to 100% of the applicable Maximum Special Tax A for Taxable Property Owner’s Association.

Fourth: If additional moneys are needed to satisfy the Special Tax A Requirement after the first three steps have been completed, the Special Tax A shall be levied Proportionately on each Parcel of Taxable Public Property at up to 100% of the applicable Maximum Special Tax A for Taxable Public Property.

Fifth: If additional moneys are needed to satisfy the Special Tax A Requirement after the first four steps have been completed, the Special Tax A shall be levied Proportionately on each Parcel of

Undeveloped Property at up to 100% of the applicable Maximum Special Tax for Undeveloped Property.

2. Special Tax B

Commencing with Fiscal Year 2022-2023 and for each following Fiscal Year, the Board shall determine the Special Tax B Requirement and shall levy the Special Tax B until the aggregate amount of Special Tax B equals the Special Tax B Requirement.

The Special Tax B shall be levied Proportionately on all Assessor's Parcels of Developed Property at up to 100% of the applicable Maximum Special Tax B to satisfy the Special Tax B Requirement.

Notwithstanding the above, under no circumstances will Special Tax A or Special Tax B levied in any Fiscal Year against any Parcel of Residential Property for which a Certificate of Occupancy has been issued be increased by more than ten percent (10%) as a result of a delinquency in the payment of Special Tax A or Special Tax B applicable to any other Parcel above the amount that would have been levied in that Fiscal Year had there never been any such delinquency or default of the CFD.

E. EXEMPTIONS

The CFD shall not levy Special Taxes on Property Owner's Association Property (except Taxable Property Owner's Association Property) or Public Property (except Taxable Public Property) within the CFD.

F. MANNER OF COLLECTION

The Special Taxes shall be collected in the same manner and at the same time as ordinary *ad valorem* property taxes and shall be subject to the same penalties, the same procedure, sale and lien priority in the case of delinquency; provided, however, that the Administrator may directly bill the Special Taxes, may collect Special Taxes at a different time or in a different manner if necessary to meet the financial obligations of the CFD, and provided further that the CFD may covenant to foreclose and may actually foreclose on Parcels having delinquent Special Taxes as permitted by the Act.

G. APPEALS

Any taxpayer may file a written appeal of the Special Taxes on his/her Parcel(s) with the Administrator, provided that the appellant is current in his/her payments of Special Taxes. During pendency of an appeal, all Special Taxes must be paid on or before the payment due date established when the levy was made. The appeal must specify the reasons why the appellant claims the Special Tax is in error. The Administrator shall review the appeal, meet with the appellant if the Administrator deems necessary, and advise the appellant of its determination. If the Administrator agrees with the appellant, the Administrator shall grant a credit to eliminate or reduce future Special Taxes on the appellant's Parcel(s). No refunds of previously paid Special Taxes shall be made.

The Administrator shall interpret this Rate and Method of Apportionment and make determinations relative to the annual levy and administration of the Special Tax and any taxpayer who appeals, as herein specified.

H. PREPAYMENT OF SPECIAL TAXES

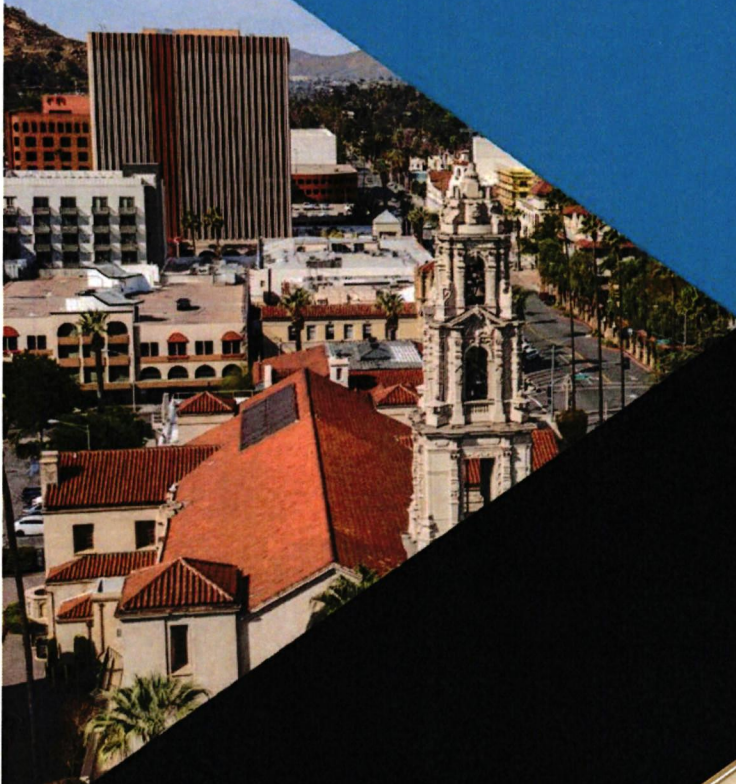
The Special Taxes may not be prepaid.

I. TERM OF THE SPECIAL TAXES

The Special Taxes shall be levied annually in perpetuity unless terminated earlier by the County.



RIVERSIDE COUNTY
OFFICE OF ECONOMIC DEVELOPMENT



SPICER CONSULTING
GROUP