

**SUBMITTAL TO THE BOARD OF SUPERVISORS
COUNTY OF RIVERSIDE, STATE OF CALIFORNIA**



ITEM: 3.69
(ID # 22349)

MEETING DATE:

Tuesday, August 01, 2023

FROM : TLMA-TRANSPORTATION:

SUBJECT: TRANSPORTATION AND LAND MANAGEMENT AGENCY/TRANSPORTATION:
Adopt Resolution Number 2023-209 ordering the Annexation of Zone 225 to Landscaping and Lighting Maintenance District Number 89-1-Consolidated, Winchester, District 3. [\$7,752 Ongoing Cost - L&LMD Number 89-1-C 100%]

RECOMMENDED MOTION: That the Board of Supervisors:

1. Adopt Resolution Number 2023-209, Resolution of the Board of Supervisors of the County of Riverside ordering the annexation of Zone 225 to Landscaping and Lighting Maintenance District Number 89-1-Consolidated of the County of Riverside and confirming the diagram and assessment for Zone 225 of Landscaping and Lighting Maintenance District Number 89-1-Consolidated and levying assessments on all assessable lots and parcels of land therein within the boundaries of said zone for the fiscal year 2023-24;

Continued on page 2

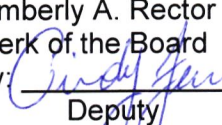
ACTION:Policy


Mark Lancaster, Director of Transportation 7/21/2023

MINUTES OF THE BOARD OF SUPERVISORS

On motion of Supervisor Spiegel, seconded by Supervisor Gutierrez and duly carried by unanimous vote, IT WAS ORDERED that the above matter is approved as recommended.

Ayes: Jeffries, Spiegel, Perez, Washington, and Gutierrez
Nays: None
Absent: None
Date: August 1, 2023
xc: Trans., Auditor

Kimberly A. Rector
Clerk of the Board
By: 
Deputy

**SUBMITTAL TO THE BOARD OF SUPERVISORS COUNTY OF RIVERSIDE,
STATE OF CALIFORNIA**

RECOMMENDED MOTION: That the Board of Supervisors:

2. Direct the Clerk of the Board to immediately file the diagram and assessment, or a certified copy thereof, with the County Auditor-Controller in accordance with Section 22641 of the Streets and Highways Code; and
3. Direct the County Auditor-Controller to establish an interest-bearing sub-fund 20300 to receive deposits and interest thereon from Zone 225 of Landscaping and Lighting Maintenance District Number 89-1-Consolidated; in accordance with Sections 22655 and 22656 of the Streets and Highways Code.

| FINANCIAL DATA | Current Fiscal Year: | Next Fiscal Year: | Total Cost: | Ongoing Cost |
|--|-----------------------------|--------------------------|---------------------------|---------------------|
| COST | \$ 0 | \$ 7,752 | \$ 0 | \$ 7,752 |
| NET COUNTY COST | \$ 0 | \$ 0 | \$ 0 | \$ 0 |
| SOURCE OF FUNDS: L&LMD Number 89-1-C – 100% There are no General Funds used in this project. | | | Budget Adjustment: | N/A |
| | | | For Fiscal Year: | 23/24 |

C.E.O. RECOMMENDATION: Approve

BACKGROUND:

Summary

Landscaping and Lighting Maintenance Districts (L&LMDs) are formed for the purpose of creating a funding mechanism to pay for the installation and maintenance of landscaping, streetlights, traffic signals, drainage inlet water quality filters, decorative fencing, and other roadside features within the road right of way. Within an established L&LMD, zones are created for specific developments, a fee structure is developed specific to the features within that zone, and the zone is then assessed through a tax levy on annual basis for the installation and maintenance of the features within that particular zone.

L&LMD Number 89-1-Consolidated (“L&LMD Number 89-1-C”) was formed in 1994, Resolution Number 94-389, and currently consists of 166 individual zones with different fee structures spread throughout Riverside County. The property owner of Tract Map Number 36417 (TR36417), as described in the attached Exhibit “A”, has petitioned the County to annex their property into L&LMD 89-1-C, creating Zone 225. The boundaries of Zone 225 will encompass the entire TR36417 and will include the maintenance and servicing of fossil filters.

On June 27, 2023, a public hearing was held to receive all testimony regarding the annexation of Zone 225 to L&LMD Number 89-1-C. After closing the public hearing, the Board of Supervisors directed the Director of Transportation, or their designee, to tabulate the assessment ballots that had been received prior to the close of the hearing. The assessment ballots were to be tabulated on June 28, 2023 at 10:00 a.m. in Conference Room B on the 8th Floor of the County Administrative Center. The tabulation shows that 1 vote representing 1

**SUBMITTAL TO THE BOARD OF SUPERVISORS COUNTY OF RIVERSIDE,
STATE OF CALIFORNIA**

parcel out of a possible 1 were cast, and that 1 vote (or 100%) were cast in favor of the annexation of Zone 225 to L&LMD Number 89-1-C and the levy and enrollment of the special assessment.

Adoption of Resolution Number 2023-209 confirms the assessment levy as indicated in the Engineer's Report for fiscal year 2023-24 for Zone 225 of L&LMD Number 89-1-C and orders the placement of the annual assessment on the County's Assessment Roll for fiscal year 2023-24.

Reference

At the direction of the County of Riverside Board of Supervisors, L&LMD Number 89-1-C was formed in 1994 by Resolution Number 94-389 authorizing the annexation of new zones into L&LMD Number 89-1-C for the purpose of levying assessments to pay for the installation and maintenance of landscaping, streetlights and other right-of-way approved improvements.

The zone-specific Engineer's Report for fiscal year 2023-24 was prepared in compliance with the requirement of Article 4, Chapter 1 of the Landscaping and Lighting Act of 1972, which is Part 2 of Division 15 of the California Streets and Highways Code. The County initiates annexation proceedings for the annual levy of assessments by passing a resolution, which proposes the new levy under the Landscaping and Lighting Act of 1972. This resolution also describes the improvements, describes the location of the zone within the District and finally orders an engineer, who is a registered professional engineer, certified by the State of California, to prepare and file a detailed report.

In November 1996, California voters passed Proposition 218, Right to Vote on Taxes Act which added Articles XIII C and XIII D to the California Constitution, creating new procedures that must be followed to levy annual assessments under the Landscaping and Lighting Act of 1972. A County may levy annual assessments for an assessment district after complying with the requirements of the Landscaping and Lighting Act of 1972, and the provisions of Proposition 218 Right to Vote on Taxes Act.

Impact on Residents and Businesses

The new assessment is for the purpose of providing the maintenance and servicing of fossil filters within public right-of-way.

Only the residential/commercial property owners within the proposed boundaries of Zone 225, which are represented by TR36417, as described in the attached Exhibit "A" (a two-page exhibit containing a description and diagram) are impacted by the cost of this annexation. By setting up an assessment for the maintenance of certain infrastructure required by the development, the County requires that the development pay for its special benefit.

**SUBMITTAL TO THE BOARD OF SUPERVISORS COUNTY OF RIVERSIDE,
STATE OF CALIFORNIA**

SUPPLEMENTAL:

Additional Fiscal Information

The proposed budget for fiscal year 2023-24 for Zone 225 is \$7,752. This will result in an assessment for fiscal year 2023-24 within Zone 225 of \$34 per parcel. Zone 225 includes 228 single-family residences. The annual assessment may be adjusted annually by the greater of 2% or the cumulative percentage increase in the Consumer Price Index for all Urban Customers (CPI-U), if any, as it stands as of March of each year over the base index for March of 2023.

Contract History and Price Reasonableness

N/A

ATTACHMENTS:

- A. Location Map
- B. Exhibit A
- C. Resolution Number 2023-209



Jason Farin, Principal Management Analyst 7/26/2023



Aaron Gettis, Deputy County Counsel 7/21/2023

RESOLUTION NUMBER 2023-209

RESOLUTION OF THE BOARD OF SUPERVISORS OF THE COUNTY OF RIVERSIDE ORDERING THE ANNEXATION OF ZONE 225 TO LANDSCAPING AND LIGHTING MAINTENANCE DISTRICT NUMBER 89-1-CONSOLIDATED OF THE COUNTY OF RIVERSIDE AND CONFIRMING THE DIAGRAM AND ASSESSMENT FOR ZONE 225 OF LANDSCAPING AND LIGHTING MAINTENANCE DISTRICT NUMBER 89-1-CONSOLIDATED AND LEVYING ASSESSMENTS ON ALL ASSESSABLE LOTS AND PARCELS OF LAND THEREIN WITHIN THE BOUNDARIES OF SAID ZONE FOR THE FISCAL YEAR 2023-24

WHEREAS, on May 9, 2023 the Board of Supervisors (hereinafter the "Board of Supervisors") of the County of Riverside (hereinafter the "County") adopted Resolution Number 2023-099, pursuant to Section 22608 and Section 22585 et seq. of the Streets and Highways Code, declaring the intention of the Board of Supervisors to order the annexation of Zone 225 to Landscaping and Lighting Maintenance District Number 89-1-Consolidated (hereinafter "L&LMD Number 89-1-C") of the County pursuant to the Landscaping and Lighting Act of 1972, being Part 2 (commencing with Section 22500) of Division 15 of the Streets and Highways Code, and giving notice of and setting a public hearing for 9:30 a.m. on June 27, 2023 at the meeting room of the Board of Supervisors and requiring that the notice of the public hearing and assessment ballots be mailed to all owners of property within Zone 225 as shown on the equalized tax roll; and

WHEREAS, notice of said public hearing was duly published and mailed as required by Resolution Number 2023-099, Section 22588 of the Streets and Highways Code and Sections 53753 and 54954.6 of the Government Code and the assessment ballots were timely mailed to all owners of property within said Zone 225 as shown on the equalized tax roll; and

08.01.2023 3.69

FORM APPROVED COUNTY COUNSEL
BY *Carolyn K. Monroy* DATE 7-26-23

1 **WHEREAS**, at 9:30 a.m. on June 27, 2023, as set forth in Resolution Number 2023-099, the
2 Board of Supervisors held a public hearing and afforded all interested persons an opportunity to be
3 heard, and considered all oral statements and all written protest or communications made or filed by
4 any interested persons, closed the public hearing and directed the Director of Transportation, or their
5 designee, as an impartial person having no vested interest in the annexation of Zone 225 to L&LMD
6 Number 89-1-C as required by Section 53753(e) of the Government Code to tabulate the assessment
7 ballots that had been received prior to the close of the public hearing; and

8 **WHEREAS**, the tabulation of the assessment ballots show that assessment ballots were timely
9 received from the owner of 1 parcel out of a possible 1 parcel and that 1 parcel (100 percent of the
10 assessment ballots received) voted in favor of annexation of Zone 225 to L&LMD Number 89-1-C and
11 the levy of an annual assessment in said Zone 225 beginning fiscal year 2023-24; and

12 **WHEREAS**, the Board of Supervisors may proceed, pursuant to Section 22631 of the Streets
13 and Highways Code, to adopt a resolution ordering the improvements and the annexation of Zone 225
14 and confirming the diagram and assessment, either as originally proposed, or as changed by the
15 Board of Supervisors, and the adoption of such a resolution shall constitute the levy of an assessment
16 on all assessable lots and parcels of land within Zone 225 of L&LMD Number 89-1-C for fiscal year
17 2023-24.

18 **NOW, THEREFORE, BE IT RESOLVED, FOUND, DETERMINED AND ORDERED** by the
19 Board of Supervisors of the County in regular session on August 1, 2023 as follows:

20 **Section 1. Findings.** The Board of Supervisors finds:

- 21 (a) the preceding recitals are correct;
- 22 (b) compliance has been had with all the requirements of the Landscaping and
23 Lighting Act of 1972, being Part 2 (commencing with Section 22500) of Division
24 15 of the Streets and Highways Code, and Sections 53753 and 54954.6 of the
25 Government Code;
- 26

- 1 (c) a majority protest to the annexation of, and annual assessment of, Zone 225 of
2 L&LMD Number 89-1-C has not been filed;
- 3 (d) the tabulation of the assessment ballots timely received was 100 percent voted
4 in favor of annexation of Zone 225 to L&LMD Number 89-1-C and the levy of an
5 annual assessment beginning fiscal year 2023-24, and 0 percent voted no;
- 6 (e) the Board of Supervisors may proceed to adopt a resolution ordering the
7 annexation of Zone 225 to L&LMD Number 89-1-C;
- 8 (f) the Board of Supervisors may proceed to adopt a resolution confirming the
9 diagram and assessment for Zone 225 of L&LMD Number 89-1-C either as
10 originally proposed or as changed by it; and
- 11 (g) the assessments to be levied on the assessable lots and parcels of land within
12 Zone 225 of L&LMD Number 89-1-C for the maintenance and servicing of fossil
13 filters improvements in said Zone 225 during the fiscal year 2023-24 as
14 contained in the report of the Director of Transportation which is on file with the
15 Clerk of the Board of Supervisors (hereinafter the "Report") are based on
16 benefits derived by such lots and parcels from the availability of such fossil
17 filters improvements, and are not based upon the ownership of such lots and
18 parcels.

19 **Section 2. Annexation.** Zone 225, as proposed to be annexed to L&LMD Number
20 89-1-C, which includes all the property subject to Tract Number 36417 in the County of Riverside,
21 State of California as described in Exhibit "A" attached hereto, shall be and is annexed into L&LMD
22 Number 89-1-C.

23 **Section 3. Improvements.** The improvements authorized for Zone 225 of L&LMD
24 Number 89-1-C are:

25

26

1 (a) The maintenance and servicing of runoff catch basin filters within the public
2 right-of-way including the removal of petroleum hydrocarbons and other
3 pollutants from water runoff; and

4 **Section 4. Confirmation of Report.** The Report and the assessment diagram and
5 the assessment of estimated benefits and costs for the maintenance and servicing of fossil filters
6 improvements in Zone 225 of L&LMD Number 89-1-C for fiscal year 2023-24 as contained in the
7 Report are confirmed.

8 **Section 5. Levy of Assessment.** Pursuant to Section 22594 of the Streets and
9 Highways Code the adoption of this resolution constitutes the levy of the assessment for the
10 maintenance and servicing of fossil filters improvements in Zone 225 of L&LMD Number 89-1-C during
11 fiscal year 2023-24, as contained in the Report, and such assessment is levied. The Clerk of the
12 Board of Supervisors is directed to file a certified copy of this resolution, together with the diagram and
13 assessment contained in the Report with the County Auditor-Controller of the County of Riverside,
14 who, pursuant to Section 22645 of the Streets and Highways Code, shall enter on the County
15 assessment roll opposite each lot or parcel of land the amount assessed thereupon, as shown in said
16 assessment.

17 **Section 6. Effective Date.** This Resolution shall take effect from and after its date
18 of adoption.

19 ROLL CALL:

20 Ayes: Jeffries, Washington, Spiegel, Perez and Gutierrez
21 Nays: None
22 Absent: None

23 The foregoing is certified to be a true copy of a resolution duly adopted by said Board of Supervisors on
24 the date therein set forth.

25 KIMBERLY A. RECTOR, Clerk of said Board

26 By:  Deputy

EXHIBIT "A"

DESCRIPTION OF BOUNDARIES

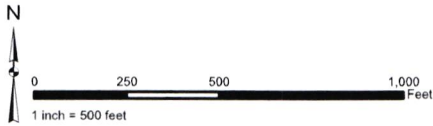
The boundaries of Zone 225 to be annexed into Landscaping and Lighting Maintenance District No. 89-1-Consolidated, of the County of Riverside, are coterminous with the boundaries of APN 461-160-029 as shown on Assessment Roll in the County of Riverside, State of California in Fiscal Year 2023-24.

1
2
3
4
5
6
7
8
9
10
11
12
13
14
15
16
17
18
19
20
21
22
23
24

LANDSCAPING AND LIGHTING MAINTENANCE DISTRICT NO. 89-1 CONSOLIDATED

ZONE 225

PORTION(S) OF SECTION 31, T.5S., R.2W.
TRACT MAP NO. 36417
1 PARCEL

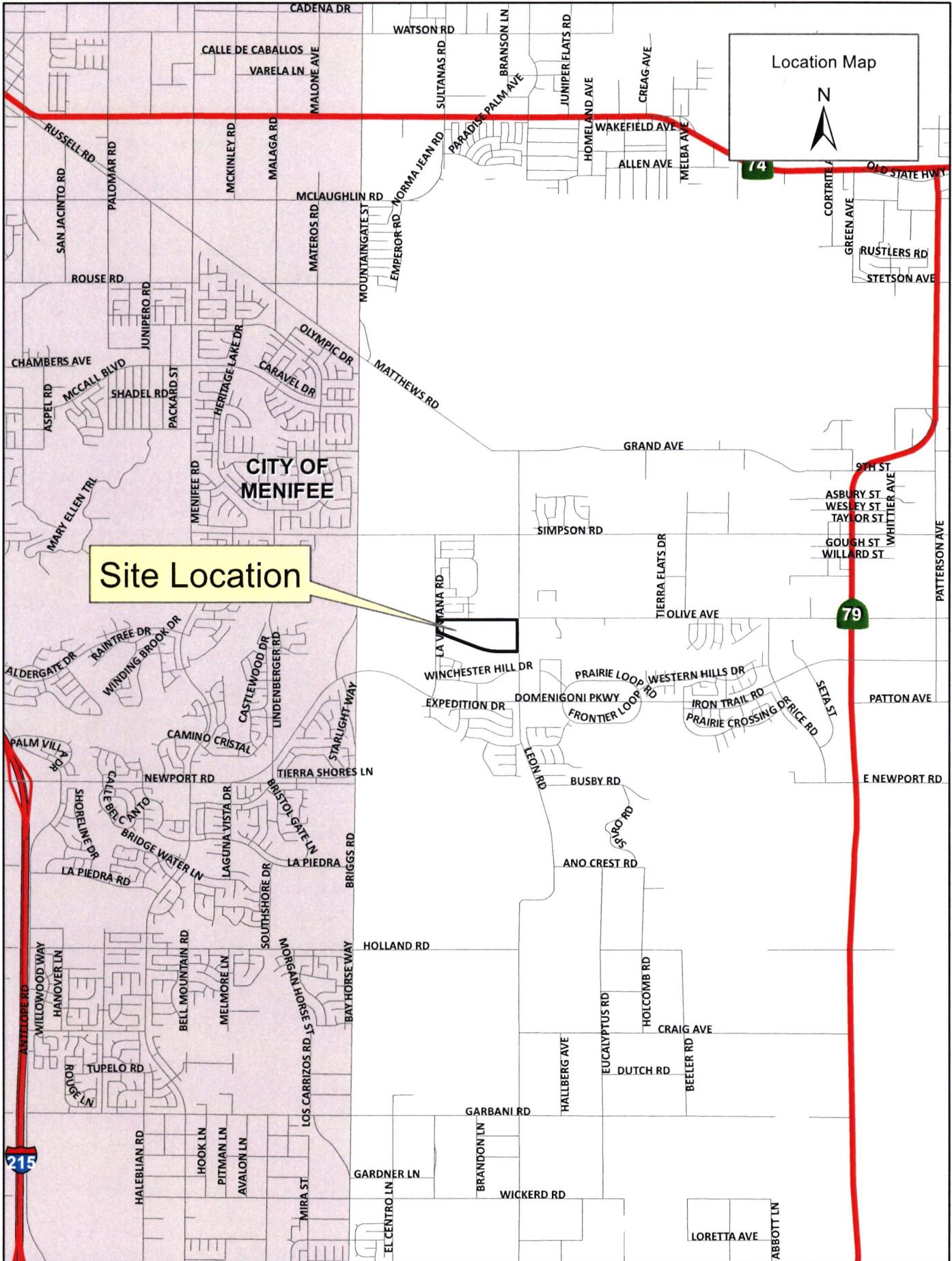


The County of Riverside assumes no warranty or legal responsibility for the information contained on this map. Data and information represented on this map is subject to updates, modifications and may not be complete or appropriate for all purposes. County GIS and other sources should be queried for the most current information. Do not copy or resell this map. Printed by BHAWN on 4/1/2022

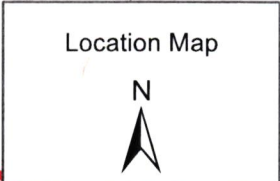
ASSESSMENT DIAGRAM



- DENOTES MAINTAINED STORMWATER RUNOFF CATCH BASIN FILTER
- ▭ DENOTES ZONE BOUNDARY



Site Location



CITY OF MENIFEE

215

74

79