

MINUTES OF THE BOARD OF SUPERVISORS  
COUNTY OF RIVERSIDE, STATE OF CALIFORNIA



**PUBLIC COMMENT:**

**24.1**

During the oral communication section of the agenda for Tuesday, May 6, 2025, Greg Langworthy spoke regarding ROV reconciliation discrepancies.

---

**ATTACHMENTS FILED WITH  
CLERK OF THE BOARD**

**AGENDA NO.  
24.1**



**Riverside County Board of Supervisors  
Request to Speak**

Submit request to the Clerk of the Board (right of podium), Speakers are entitled to three (3) minutes, subject to Board Rules listed on the reverse side of this form. The Board may limit the public input on any item, based on the number of people requesting to speak and the business of the Board.

**SPEAKER'S NAME:** Greg Langworthy

**Address:** \_\_\_\_\_

**City:** \_\_\_\_\_ **Zip:** \_\_\_\_\_

**Phone #:** \_\_\_\_\_

**Date:** May 6, 2025 **Agenda #** Public Comment

**PLEASE STATE YOUR POSITION BELOW:**

**Position on "Regular" (non-appealed) Agenda Item:**

\_\_\_\_\_ **Support** \_\_\_\_\_ **Oppose** \_\_\_\_\_ **Neutral**

**Note:** If you are here for an agenda item that is filed for "Appeal", please state separately your position on the appeal below:

\_\_\_\_\_ **Support** \_\_\_\_\_ **Oppose** \_\_\_\_\_ **Neutral**

**I give my 3 minutes to:** \_\_\_\_\_

Parking validations available for speakers only – see Clerk of the Board.

(Revised: 04/23/2025)

## BOARD RULES

### Requests to Address Board on "Agenda" Items:

You may request to be heard on a published agenda item. Requests to be heard must be submitted to the Clerk of the Board before the scheduled meeting time.

### Requests to Address Board on items that are "NOT" on the Agenda:

Notwithstanding any other provisions of these rules, member of the public shall have the right to address the Board during the mid-morning "Oral Communications" segment of the published agenda. Said purpose for address must pertain to issues which are under the direct jurisdiction of the Board of Supervisors. YOUR TIME WILL BE LIMITED TO THREE (3) MINUTES. The Board may limit the public input on any item, based on the number of people requesting to speak and the business of the Board.

### Power Point Presentations/Printed Material:

Speakers who intend to conduct a formalized Power Point presentation or provide printed material must notify the Clerk of the Board's Office by 12 noon on the Monday preceding the Tuesday Board meeting, ensuring that the Clerk's Office has sufficient copies of all printed materials and at least one (1) copy of the Power Point CD. Copies of printed material given to the Clerk (by Monday noon deadline) will be provided to each Supervisor. If you have the need to use the overhead "Elmo" projector at the Board meeting, please ensure your material is clear and with proper contrast, notifying the Clerk well ahead of the meeting, of your intent to use the Elmo. **Speakers are prohibited from bringing signs, placards, or posters into the hearing room.**

### Individual Speaker Limits:

**Individual speakers are limited to a maximum of three (3) minutes.** The Board may limit the public input on any item, based on the number of people requesting to speak and the business of the Board. Please step up to the podium when the Chair calls your name and begin speaking immediately. Pull the microphone to your mouth so that the Board, audience, and audio recording system hear you clearly. Once you start speaking, the "green" podium light will light. The "yellow" light will come on when you have one (1) minute remaining. When you have 30 seconds remaining, the "yellow" light will begin flash, indicating you must quickly wrap up your comments. Your time is up when the "red" light flashes. The Chair adheres to a strict three (3) minutes per speaker. **Note: If you intend to give your time to a "Group/Organized Presentation", please state so clearly at the very bottom of the reverse side of this form.**

### Group/Organized Presentations:

Group/organized presentations with more than one (1) speaker will be limited to nine (9) minutes at the Chair's discretion. The organizer of the presentation will automatically receive the first three (3) minutes, with the remaining six (6) minutes relinquished by other speakers, as requested by them on a completed "Request to Speak" form, and clearly indicated at the front bottom of the form.

### Addressing the Board & Acknowledgement by Chair:

The Chair will determine what order the speakers will address the Board and will call on all speakers in pairs. The first speaker should immediately step to the podium and begin addressing the Board. The second speaker should take up a position in one of the chamber aisles to quickly step up to the podium after the preceding speaker. This is to afford an efficient and timely Board meeting, giving all attendees the opportunity to make their case. Speakers are prohibited from making personal attacks, and/or using coarse, crude, profane or vulgar language while speaking to the Board members, staff, the public and/or meeting participants. Such behavior, at the discretion of the Board Chair may result in removal from the Board Chambers by Sheriff Deputies.

MINUTES OF THE BOARD OF SUPERVISORS  
COUNTY OF RIVERSIDE, STATE OF CALIFORNIA



**PUBLIC COMMENT:**

**24.2**

During the oral communication section of the agenda for Tuesday, May 6, 2025, Mitchell Pearce spoke regarding the Alliance for Addiction Solutions program.

---

**ATTACHMENTS FILED WITH  
CLERK OF THE BOARD**

**AGENDA NO.  
24.2**

✓

**Riverside County Board of Supervisors  
Request to Speak**

Submit request to Clerk of Board (right of podium), Speakers are entitled to three (3) minutes, subject to Board Rules listed on the reverse side of this form. The Board may limit the public input on any item, based on the number of people requesting to speak and the business of the Board.

**SPEAKER'S NAME:** Mitchell Bearce

**Address:** 16 Via Palmieki Ct  
(Only if follow-up mail response requested)

**City:** Lake Elsinore **Zip:** 92532

**Phone #:** 408-639-0211

**Date:** May 6 2025 **Agenda #** 241

**PLEASE STATE YOUR POSITION BELOW:**

**Position on "Regular" (non-appealed) Agenda Item:**

\_\_\_\_\_ **Support** \_\_\_\_\_ **Oppose** \_\_\_\_\_ **Neutral**

**Note:** If you are here for an agenda item that is filed for "Appeal", please state separately your position on the appeal below:

\_\_\_\_\_ **Support** \_\_\_\_\_ **Oppose** \_\_\_\_\_ **Neutral**

**I give my 3 minutes to:** \_\_\_\_\_

Parking validations available for speakers only – see Clerk of the Board.

(Revised: 06/13/2024)

## BOARD RULES

### Requests to Address Board on "Agenda" Items:

You may request to be heard on a published agenda item. Requests to be heard must be submitted to the Clerk of the Board before the scheduled meeting time.

### Requests to Address Board on items that are "NOT" on the Agenda:

Notwithstanding any other provisions of these rules, member of the public shall have the right to address the Board during the mid-morning "Oral Communications" segment of the published agenda. Said purpose for address must pertain to issues which are under the direct jurisdiction of the Board of Supervisors. YOUR TIME WILL BE LIMITED TO THREE (3) MINUTES. The Board may limit the public input on any item, based on the number of people requesting to speak and the business of the Board.

### Power Point Presentations/Printed Material:

Speakers who intend to conduct a formalized Power Point presentation or provide printed material must notify the Clerk of the Board's Office by 12 noon on the Monday preceding the Tuesday Board meeting, ensuring that the Clerk's Office has sufficient copies of all printed materials and at least one (1) copy of the Power Point CD. Copies of printed material given to the Clerk (by Monday noon deadline) will be provided to each Supervisor. If you have the need to use the overhead "Elmo" projector at the Board meeting, please ensure your materials are clear and with proper contrast, notifying the Clerk well ahead of the meeting, of your intent to use the Elmo. **Speakers are prohibited from bringing signs, placards, or posters into the hearing room.**

### Individual Speaker Limits:

Individual speakers are limited to a maximum of three (3) minutes. The Board may limit the public input on any item, based on the number of people requesting to speak and the business of the Board. Please step up to the podium when the Chair calls your name and begin speaking immediately. Pull the microphone to your mouth so that the Board, audience, and audio recording system hear you clearly. Once you start speaking, the "green" podium light will light. The "yellow" light will come on when you have one (1) minute remaining. When you have 30 seconds remaining, the "yellow" light will begin flash, indicating you must quickly wrap up your comments. Your time is up when the "red" light flashes. The Chair adheres to a strict three (3) minutes per speaker. **Note: If you intend to give your time to a "Group/Organized Presentation", please state so clearly at the very bottom of the reverse side of this form.**

### Group/Organized Presentations:

Group/organized presentations with more than one (1) speaker will be limited to nine (9) minutes at the Chair's discretion. The organizer of the presentation will automatically receive the first three (3) minutes, with the remaining six (6) minutes relinquished by other speakers, as requested by them on a completed "Request to Speak" form, and clearly indicated at the front bottom of the form.

### Addressing the Board & Acknowledgement by Chair:

The Chair will determine what order the speakers will address the Board and will call on all speakers in pairs. The first speaker should immediately step to the podium and begin addressing the Board. The second speaker should take up a position in one of the chamber aisles to quickly step up to the podium after the preceding speaker. This is to afford an efficient and timely Board meeting, giving all attendees the opportunity to make their case. Speakers are prohibited from making personal attacks, and/or using coarse, crude, profane or vulgar language while speaking to the Board members, staff, the public and/or meeting participants. Such behavior, at the discretion of the Board Chair may result in removal from the Board Chambers by Sheriff Deputies.



MITCHELL J. PEARCE, D.C., M.S., L.Ac., D.A.C.B.N.

16 Via Palmieki Court  
Lake Elsinore, CA 92532-0146  
Tel: 408-293-3883  
Fax: 408-889-2669  
Email: DrPearce@BetterHealer.com  
Chiropractic License #DC14535

Certified Chiropractic Sports Practitioner  
Diplomate of the American  
Clinical Board of Nutrition  
Master of Science in  
Traditional Chinese Medicine  
Acupuncture License #AC4378

May 06, 2025

Riverside County Board of Supervisors  
Via Hand delivery

Dear Honorable Supervisors:

I am a member of the board of directors of the Alliance for Addiction Solutions. The Alliance provides support to the addiction treatment community primarily through education regarding best practices and emerging treatment advances for recovering substance abusers and support for their loved ones. In the past decades we've presented conferences showcasing successful innovations in treatment, such as acupuncture, nutritional interventions, and various psycho-social and institutional settings innovations. We are currently focusing our efforts on the effects of targeted nutritional supplements on the course of recovery and prevention of relapse.

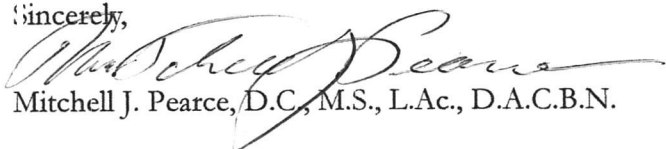
We have become aware of Proposition 47 funded grants from the California Board of State and Community Corrections (BSCC) and their yearly funding cycle. I'm also aware that Riverside County was awarded grants to the Riverside County Department of Housing and Workforce Solutions, the Riverside County Veterans' Services last year. Congratulations!

We are interested in formally studying specific nutrient supplements for alcoholics and other substance abusers in a controlled environment. These would essentially consist of a control group receiving current standard care as defined by the agency administering it and an experimental group where targeted nutritional supplements would be added to the standard treatment regimen. It appears that Proposition 47 funded grants from the BSCC would be an ideal source of funding.

If you would be interested in receiving such grants with The Alliance for Addictions Solutions identified as a contractor within the grant, we would be very interested in designing and implementing a study that could be funded by a BSCC Proposition 47 grant. Our goal is to determine if the addition of targeted nutritional interventions that show promise in the field will improve outcomes under the rigors of a randomized controlled trial (RCT). RCT's are the gold standard for proof of efficacy. We expect it will but need a controlled trial to find out. I expect it will take a year of planning and that we could apply for the grant next spring.

If there is interest, next step would be to schedule an appointment with Sheriff Bianco or his designee with me so that AAS can familiarize itself with your current treatment programs in controlled settings. If we find we can design an alliance with your current approach(es), we can proceed to grant writing and implementation. I look forward to your response.

Sincerely,



Mitchell J. Pearce, D.C., M.S., L.Ac., D.A.C.B.N.

MINUTES OF THE BOARD OF SUPERVISORS  
COUNTY OF RIVERSIDE, STATE OF CALIFORNIA



**PUBLIC COMMENT:**  
**24.3**

During the oral communication section of the agenda for Tuesday, May 6, 2025, Tonya Gonzalez spoke in opposition to the Stone Ridge Commence Center.

---

ATTACHMENTS FILED WITH  
CLERK OF THE BOARD

AGENDA NO.  
24.3



Riverside County Board of Supervisors  
Request to Speak

Submit request to the Clerk of the Board (right of podium), Speakers are entitled to three (3) minutes, subject to Board Rules listed on the reverse side of this form. The Board may limit the public input on any item, based on the number of people requesting to speak and the business of the Board.

SPEAKER'S NAME: Tonya Gonzalez

Address: \_\_\_\_\_

City: \_\_\_\_\_ Zip: \_\_\_\_\_

Phone #: \_\_\_\_\_

Date: 05/06/25 Agenda # Public Comment

PLEASE STATE YOUR POSITION BELOW:

Position on "Regular" (non-appealed) Agenda Item:

\_\_\_\_\_ Support \_\_\_\_\_ Oppose \_\_\_\_\_ Neutral

**Note:** If you are here for an agenda item that is filed for "Appeal", please state separately your position on the appeal below:

\_\_\_\_\_ Support \_\_\_\_\_ Oppose \_\_\_\_\_ Neutral

I give my 3 minutes to: \_\_\_\_\_

Parking validations available for speakers only – see Clerk of the Board.

(Revised: 04/23/2025)

## BOARD RULES

### Requests to Address Board on "Agenda" Items:

You may request to be heard on a published agenda item. Requests to be heard must be submitted to the Clerk of the Board before the scheduled meeting time.

### Requests to Address Board on items that are "NOT" on the Agenda:

Notwithstanding any other provisions of these rules, member of the public shall have the right to address the Board during the mid-morning "Oral Communications" segment of the published agenda. Said purpose for address must pertain to issues which are under the direct jurisdiction of the Board of Supervisors. YOUR TIME WILL BE LIMITED TO THREE (3) MINUTES. The Board may limit the public input on any item, based on the number of people requesting to speak and the business of the Board.

### Power Point Presentations/Printed Material:

Speakers who intend to conduct a formalized Power Point presentation or provide printed material must notify the Clerk of the Board's Office by 12 noon on the Monday preceding the Tuesday Board meeting, ensuring that the Clerk's Office has sufficient copies of all printed materials and at least one (1) copy of the Power Point CD. Copies of printed material given to the Clerk (by Monday noon deadline) will be provided to each Supervisor. If you have the need to use the overhead "Elmo" projector at the Board meeting, please ensure your material is clear and with proper contrast, notifying the Clerk well ahead of the meeting, of your intent to use the Elmo. **Speakers are prohibited from bringing signs, placards, or posters into the hearing room.**

### Individual Speaker Limits:

**Individual speakers are limited to a maximum of three (3) minutes.** The Board may limit the public input on any item, based on the number of people requesting to speak and the business of the Board. Please step up to the podium when the Chair calls your name and begin speaking immediately. Pull the microphone to your mouth so that the Board, audience, and audio recording system hear you clearly. Once you start speaking, the "green" podium light will light. The "yellow" light will come on when you have one (1) minute remaining. When you have 30 seconds remaining, the "yellow" light will begin flash, indicating you must quickly wrap up your comments. Your time is up when the "red" light flashes. The Chair adheres to a strict three (3) minutes per speaker. ***Note: If you intend to give your time to a "Group/Organized Presentation", please state so clearly at the very bottom of the reverse side of this form.***

### Group/Organized Presentations:

Group/organized presentations with more than one (1) speaker will be limited to nine (9) minutes at the Chair's discretion. The organizer of the presentation will automatically receive the first three (3) minutes, with the remaining six (6) minutes relinquished by other speakers, as requested by them on a completed "Request to Speak" form, and clearly indicated at the front bottom of the form.

### Addressing the Board & Acknowledgement by Chair:

The Chair will determine what order the speakers will address the Board and will call on all speakers in pairs. The first speaker should immediately step to the podium and begin addressing the Board. The second speaker should take up a position in one of the chamber aisles to quickly step up to the podium after the preceding speaker. This is to afford an efficient and timely Board meeting, giving all attendees the opportunity to make their case. Speakers are prohibited from making personal attacks, and/or using coarse, crude, profane or vulgar language while speaking to the Board members, staff, the public and/or meeting participants. Such behavior, at the discretion of the Board Chair may result in removal from the Board Chambers by Sheriff Deputies.

**Flores, Kate**

---

**From:** Tonya Guillen <tonyafguillen@gmail.com>  
**Sent:** Monday, May 5, 2025 10:37 AM  
**To:** Clerk of the Board  
**Cc:** Lantz, Paul  
**Subject:** Board of Supervisors Meeting 05/06 - Presentation Submission  
**Attachments:** TonyaGonzalez - Nuevo Schooling.pptx

**CAUTION:** This email originated externally from the **Riverside County** email system. **DO NOT** click links or open attachments unless you recognize the sender and know the content is safe.

Good morning,

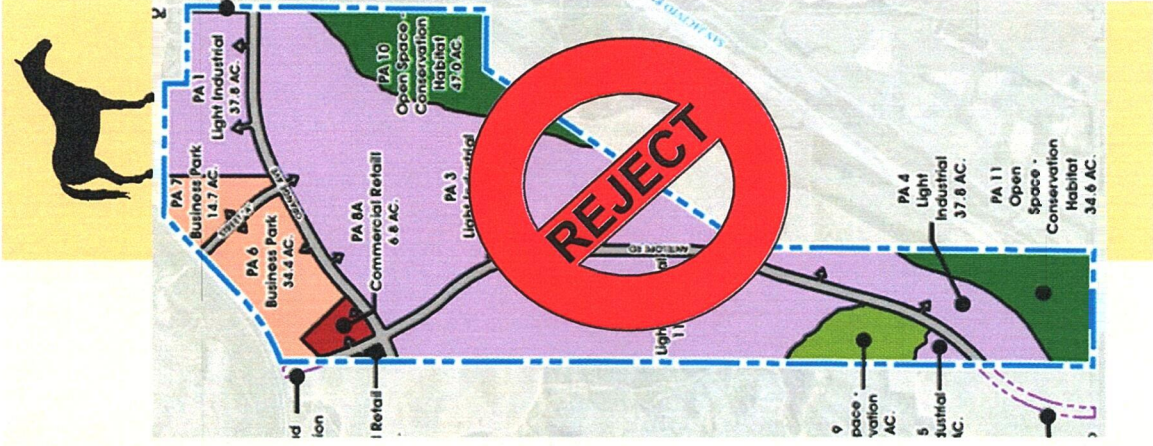
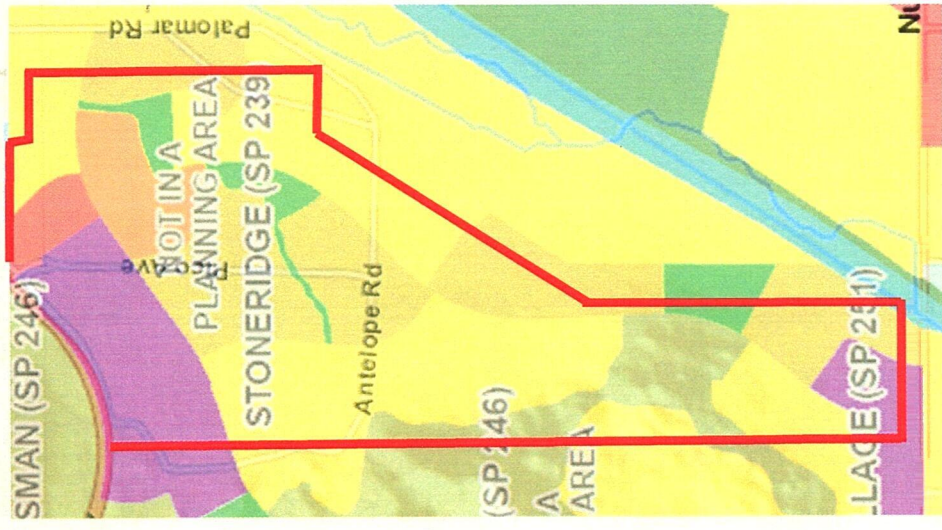
I will be attending the Board of Supervisors meeting tomorrow 05/06/2025. Please see attached my presentation that I would like displayed upon my request to speak.

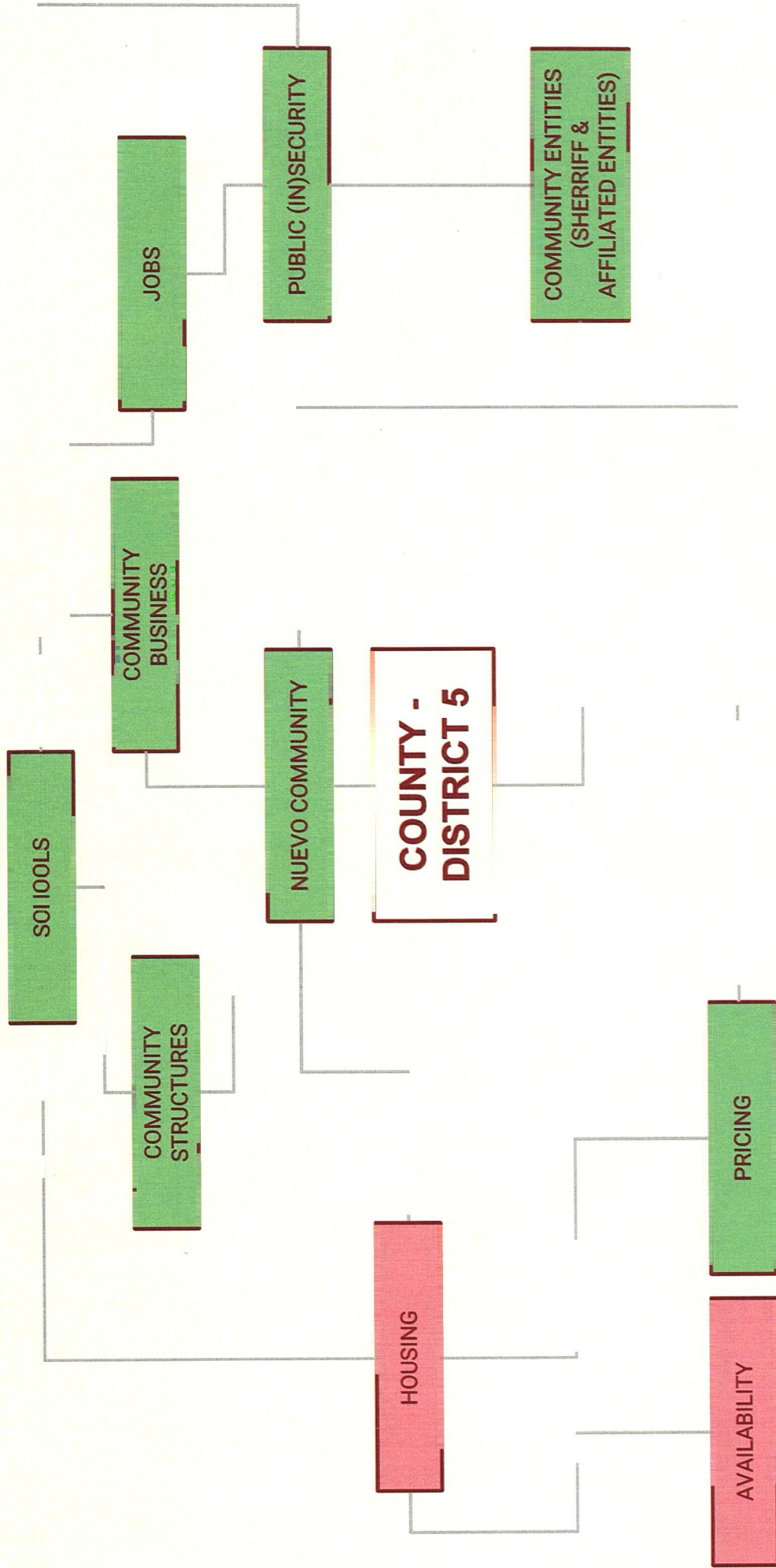
Date: 05/06/2025  
Agenda Item: Public Comment  
Name: Tonya Gonzalez

Thank you,  
Tonya Gonzalez

**Save a Nuevo Neighborhood**

Help the community of Nuevo build the community that was set to be built since the 1900's while at the same time salvaging human developed in a threatened area located in a threatened area by today's natural disasters.





# Community

**1. Heavy migration into Riverside County**

- a. County is offering better opportunities, quality of life and cost of life for individuals**
  - i. Most times heavy urban city individuals migrating come with urban mannerisms.**

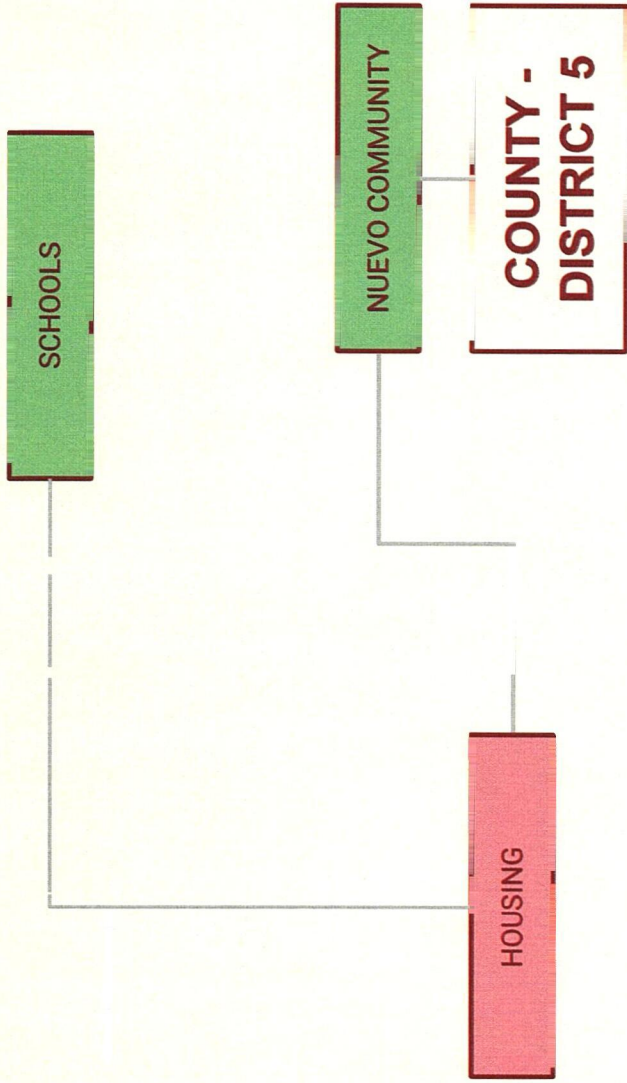
**2. Additional Housing is needed in Nuevo**

- a. Allow individuals raised and living in Nuevo to stay in Nuevo**
  - i. Project SP239 offers opportunity for properly area built homes to be constructed.**

**3. Housing construction is at a low from 30% to 10% for homes \*under 1400 Sq.Ft**

- a. Average savings for home purchase went from 5.4 years (1990) to 6.9 years (2020).**
- b. Average age to purchase increased from 2023 of 35 to 38 2024.**
- c. 1 in 4 homes are now owned by private equity.**

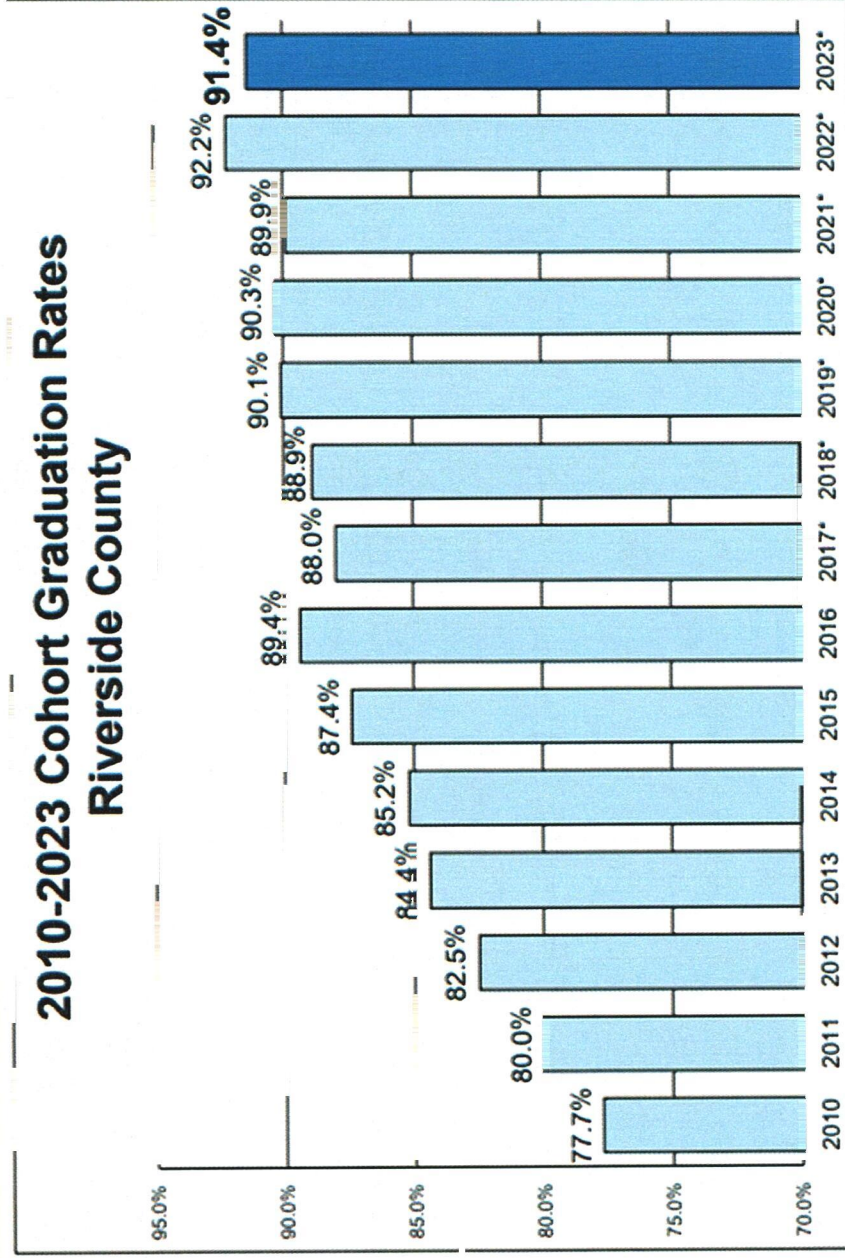
**Housing Domino Effect Objective**



---

# Community

## 2010-2023 Cohort Graduation Rates Riverside County



\*NEW Adjusted Cohort Graduation Rate (ACGR) Rule Applied

2022-2023 Riverside County Four-Year Cohort Graduation Report

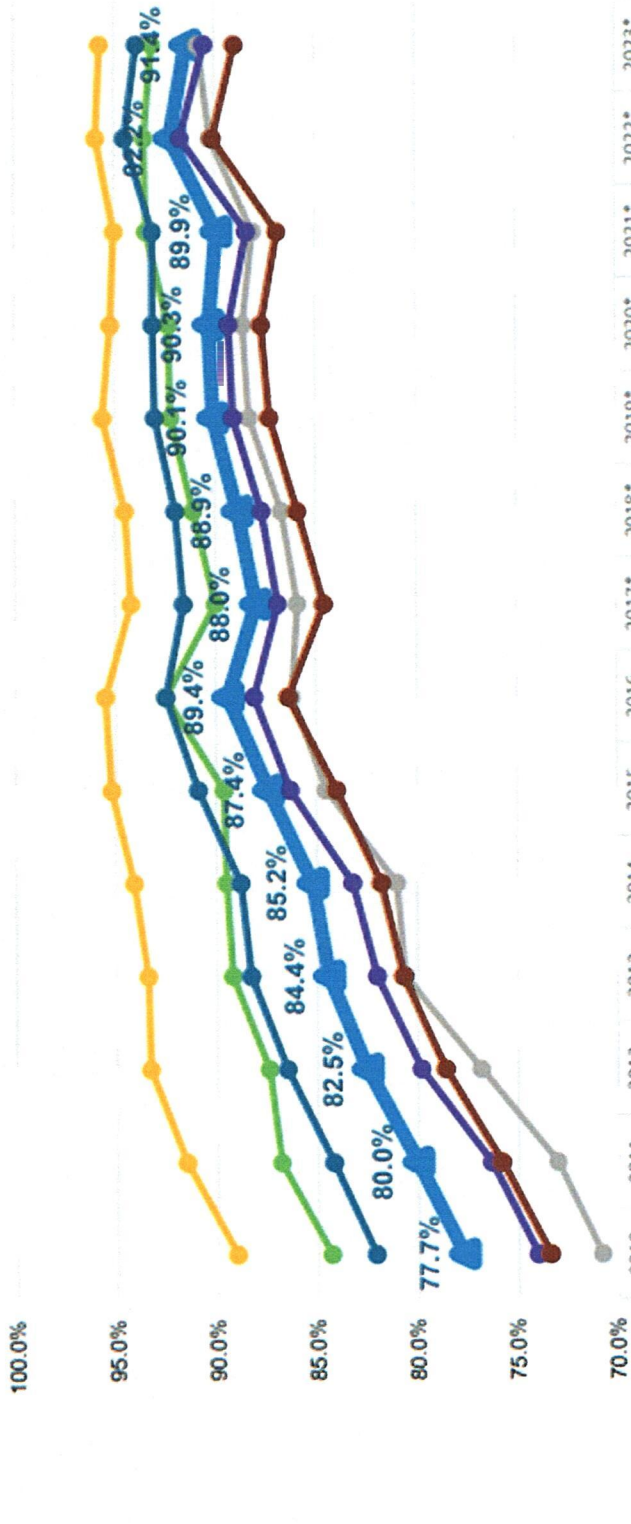
2010-2023 Cohort Graduation Rates  
List of 10 Largest Counties in CA

County	Number of 2023 Cohort Students	2010 Cohort Graduation Rate	2011 Cohort Graduation Rate	2012 Cohort Graduation Rate	2013 Cohort Graduation Rate	2014 Cohort Graduation Rate	2015 Cohort Graduation Rate	2016 Cohort Graduation Rate	2017 Cohort Graduation Rate	2018 Cohort Graduation Rate	2019 Cohort Graduation Rate	2020 Cohort Graduation Rate	2021 Cohort Graduation Rate	2022 Cohort Graduation Rate	2023 Cohort Graduation Rate	2020-2021 Cohort Graduation Rate Change	2021-2022 Cohort Graduation Rate Change	2022-2023 Cohort Graduation Rate Change						
Alameda	17,089	75.8	75.0	79.8	80.8	82.9	85.0	85.7	85.5	86.8	87.0	87.1	86.9	86.7	87.6	3	-0.2	11.1	4	1.8	12.9	3	-1.1	11.8
Fresno	16,325	69.1	74.1	76.0	77.3	78.8	81.9	83.4	80.8	81.5	81.7	80.3	81.1	84.0	83.2	9	0.8	12.0	9	2.9	14.9	9	-0.8	14.1
Kern	15,425	74.0	75.3	76.2	76.4	79.7	82.5	84.3	85.3	85.8	86.9	85.7	83.6	87.1	84.5	5	-2.1	9.6	5	3.5	13.1	7	-2.6	10.5
Los Angeles	14,213	70.5	73.7	75.1	77.1	77.9	78.7	81.6	80.8	81.6	81.8	82.2	82.4	86.1	84.4	8	0.2	11.9	7	3.7	15.6	8	-1.7	13.9
Orange	39,670	82.6	85.6	85.9	87.5	88.6	90.0	91.0	88.8	89.2	89.7	90.3	90.8	92.4	91.5	1	0.5	8.2	1	1.6	9.8	1	-0.9	8.9
<b>Riverside</b>	<b>34,085</b>	<b>77.7</b>	<b>80.0</b>	<b>82.5</b>	<b>84.4</b>	<b>85.2</b>	<b>87.4</b>	<b>89.4</b>	<b>88.0</b>	<b>88.9</b>	<b>90.1</b>	<b>90.3</b>	<b>89.9</b>	<b>92.2</b>	<b>91.4</b>	<b>2</b>	<b>-0.4</b>	<b>12.2</b>	<b>2</b>	<b>2.3</b>	<b>14.5</b>	<b>2</b>	<b>-0.8</b>	<b>13.7</b>
Sacramento	20,273	72.3	74.3	77.0	79.4	80.5	80.6	81.4	80.8	81.0	82.0	83.6	80.6	84.0	81.5	10	-3.0	8.3	9	3.4	11.7	10	-2.5	9.2
San Bernardino	32,789	70.4	74.3	77.2	78.6	78.7	80.7	83.0	82.6	83.4	84.6	80.7	83.5	86.6	85.5	6	2.8	13.1	6	3.1	16.2	5	-1.1	15.1
San Diego	40,626	74.9	77.5	79.0	79.8	79.7	81.8	81.9	80.4	81.1	81.9	82.9	82.5	85.4	84.6	7	-0.4	7.6	8	2.9	10.5	6	-0.8	9.7
Santa Clara	21,345	80.5	80.0	82.2	82.9	83.8	83.6	83.1	83.8	85.2	85.9	86.4	86.2	88.9	87.3	4	5.8	5.7	3	2.7	8.4	4	-1.6	6.8
<b>State of CA</b>	<b>495,492</b>	<b>74.7</b>	<b>77.1</b>	<b>78.9</b>	<b>80.4</b>	<b>81.0</b>	<b>82.3</b>	<b>83.8</b>	<b>82.7</b>	<b>83.0</b>	<b>84.5</b>	<b>84.2</b>	<b>83.6</b>	<b>87.0</b>	<b>86.2</b>	<b>-0.6</b>	<b>8.9</b>	<b>-0.8</b>	<b>3.4</b>	<b>3.4</b>	<b>8.9</b>	<b>-0.8</b>	<b>11.5</b>	

Schools - County

\* NEW Adjusted Cohort Graduation Rate (ACGR) Rate Rules Applied

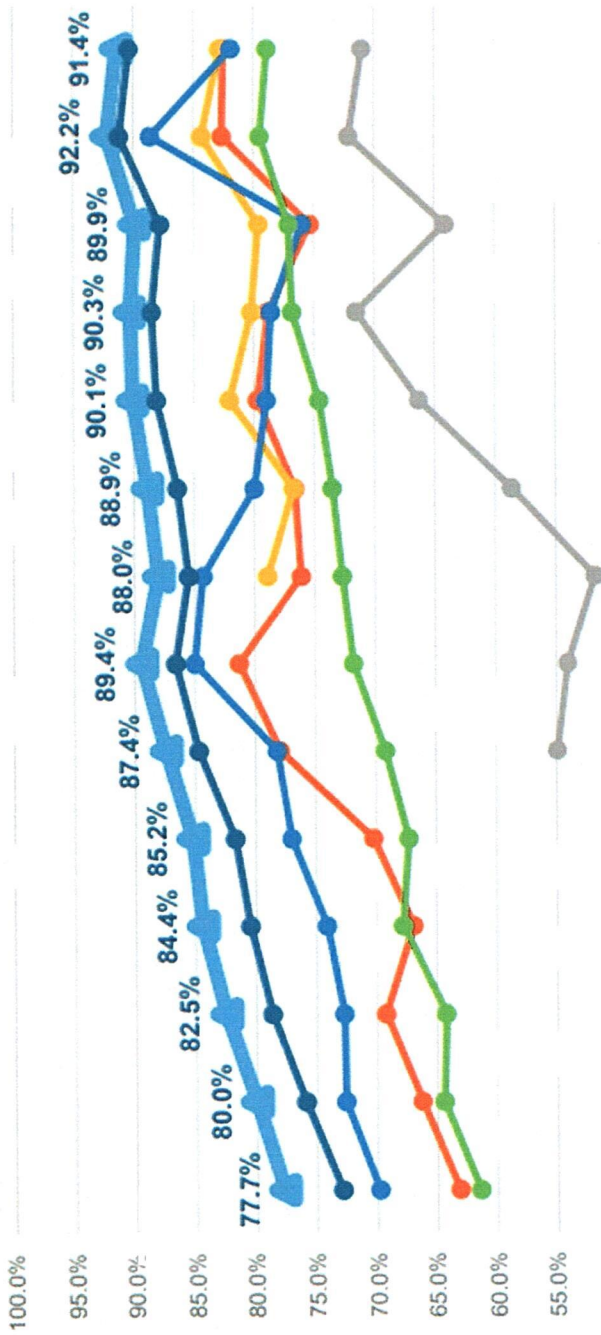
# 2010-2023 Riverside County Cohort Graduation Rates Ethnicity and Gender Comparison



	2010	2011	2012	2013	2014	2015	2016	2017*	2018*	2019*	2020*	2021*	2022*	2023*
All Students	77.7%	80.0%	82.5%	84.4%	85.2%	87.4%	89.4%	88.0%	88.9%	90.1%	90.3%	89.9%	92.2%	91.4%
African American	70.8%	73.0%	76.8%	80.6%	81.0%	84.5%	86.2%	85.9%	86.7%	88.3%	88.6%	88.1%	90.2%	90.8%
Asian	89.0%	91.5%	93.3%	93.4%	94.1%	95.2%	95.5%	94.2%	94.5%	95.6%	95.2%	95.0%	95.9%	95.7%
Hispanic or Latino	74.0%	76.3%	79.8%	82.0%	83.2%	86.3%	88.1%	86.9%	87.7%	89.1%	89.3%	88.4%	91.7%	90.5%
White	84.3%	86.8%	87.4%	89.2%	89.5%	89.6%	92.5%	90.0%	91.1%	92.2%	92.3%	93.4%	93.5%	93.1%
Female	82.1%	84.2%	86.5%	88.3%	88.8%	90.9%	92.5%	91.6%	92.0%	93.0%	93.1%	93.1%	94.5%	93.9%
Male	73.4%	75.8%	78.6%	80.7%	81.8%	84.0%	86.4%	84.6%	85.9%	87.3%	87.7%	86.9%	90.1%	89.6%

\* NEW Adjusted Cohort Graduation Rate (ACOR) Rules Applied

# 2010-2023 Riverside County Cohort Graduation Rates Program Comparison

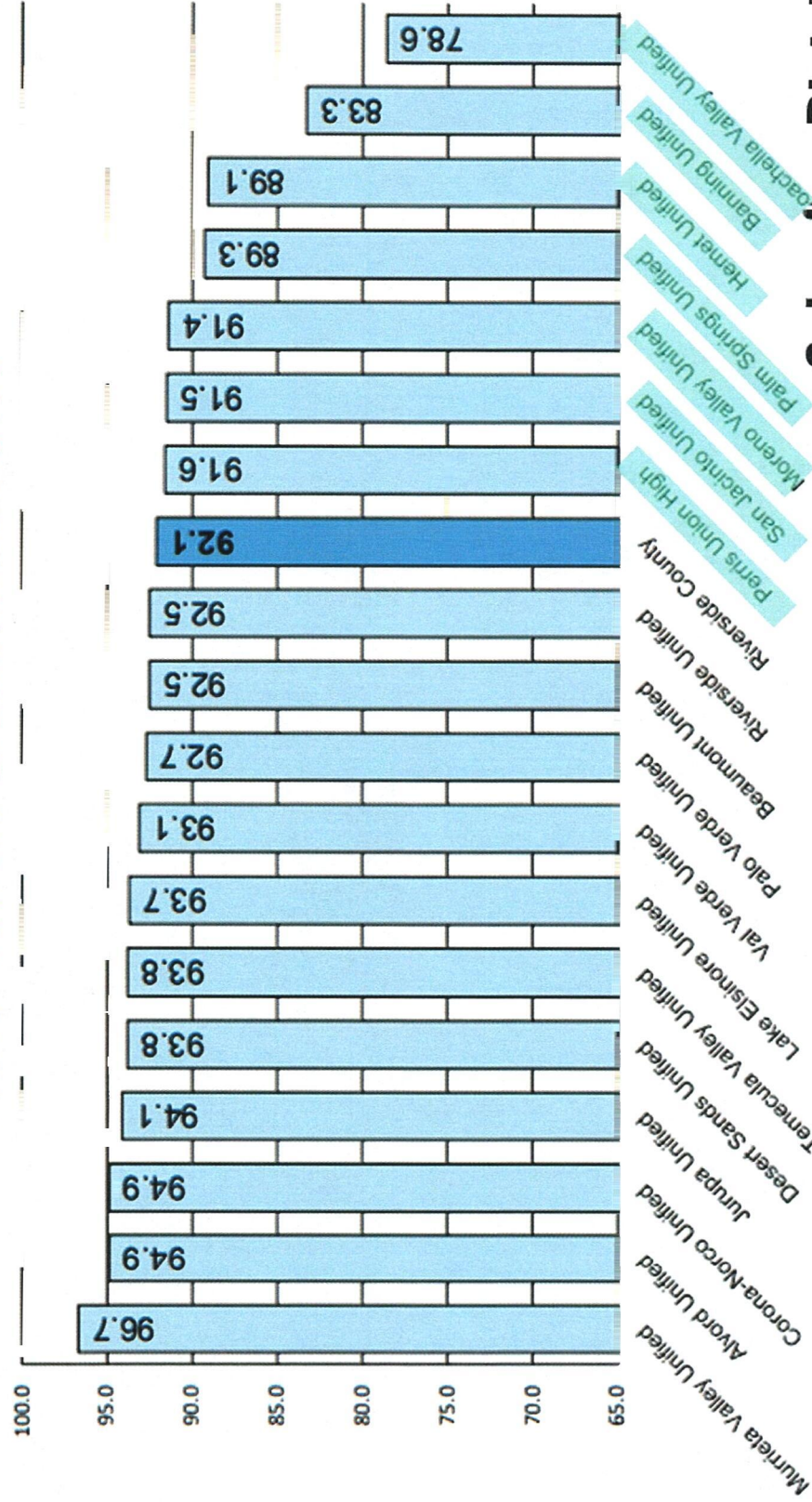


Year	2010	2011	2012	2013	2014	2015	2016	2017	2018	2019	2020	2021	2022	2023
All Students	77.7%	80.0%	82.5%	84.4%	85.2%	87.4%	88.0%	88.0%	88.9%	90.1%	90.3%	89.9%	92.2%	91.4%
English Learners	63.1%	66.2%	70.2%	77.9%	81.3%	89.4%	88.0%	88.9%	88.9%	90.1%	90.3%	89.9%	92.2%	91.4%
Foster Youth	55.0%	54.9%	54.9%	54.0%	54.0%	58.6%	58.6%	58.6%	58.6%	64.1%	64.1%	64.1%	72.1%	71.0%
Homeless Youth	69.2%	69.2%	69.2%	67.3%	67.3%	66.3%	66.3%	66.3%	66.3%	71.5%	71.5%	71.5%	84.3%	82.8%
Migrant Education	72.6%	72.7%	72.7%	74.1%	77.0%	78.2%	84.3%	84.3%	80.0%	79.0%	78.6%	76.0%	88.6%	81.9%
Students with Disabilities	61.4%	64.4%	64.2%	67.8%	67.3%	69.2%	71.8%	72.7%	73.5%	74.6%	76.8%	77.1%	79.5%	78.9%
Socioeconomically Disadvantaged	72.9%	75.9%	78.7%	80.5%	81.7%	84.7%	86.6%	85.5%	86.4%	88.5%	88.5%	87.8%	90.4%	90.4%

**Schools - County**

\* NEW Adjusted Cohort Graduation Rate (ACGR) Rules Applied

## Districts in Riverside County 2023 Cohort Graduation Rates



**District 1**  
**District 3**  
**District 5 -**  
 1. Perris Union High

**District 4 -**  
 1. Palm Springs Unified  
 2. Coachella Valley Unified

**District 5 -**  
 1. San Jacinto Unified  
 2. Moreno Valley Unified  
 3. Hemet Unified  
 4. Banning Unified

## Schools - Districts

Notes: NEW Adjusted Cohort Graduation Rate (ACGR) Rules Applied



## Santa Ana Unified could lose 350 teachers and counselors due to budget cuts

By [Yusra Farzan](#)

Published Dec 20, 2024 1:20 PM

The school board passed a resolution on a 4-1 vote Thursday evening that paves the way for the layoffs as the district tries to close a more than \$180-million deficit.

According to a staff report, state and federal COVID relief grants aren't available for the school district and the state is cutting revenue based on the average daily attendance. At the beginning of the pandemic, the school district had 47,000 enrolled students, but that has since dropped to 36,000.

The school district is now looking at cutting around 169 teachers, 57 counselors, 55 instructional coaches, 15 curriculum specialists, 21 itinerant teachers and other positions.

At the same time, the school district is proposing a 3% pay bump and 3% bonus for Superintendent Jerry Almandarez, who made \$347,083 in 2022, according to public records.

## Schools - Outside District

District	Superintendent	Term start date	Student enrollment	Base salary
Palm Springs Unified	Tonatiuh (Tony) Signoret	Jan. 1, 2024	20,160	\$290,000
Palo Verde Unified	April Smith	July 1, 2024	2,813	\$210,000
Perris Elementary School	Bruce Bivins	July 26, 2023	4,636	\$268,400
Perris Union High School	Joseph Williams (interim)	n/a	10,725	
Riverside Unified	Renee Hill	July 1, 2021	39,425	\$320,000
Romoland School	Trevor Painton	Nov. 13, 2018	4,545	\$196,028
San Jacinto Unified	David Pyle	June 1, 2020	10,276	\$239,006
Temecula Valley Unified	Gary Woods	Nov. 27, 2023	26,538	\$331,116
Val Verde Unified	Gordon Amerson	July 1, 2024	19,379	\$350,000
Moreno Valley Unified	Alejandro Ruvalcaba	July 1, 2024	31,653	\$356,000
Murrieta Valley Unified	Ward Andrus	July 1, 2022	22,365	\$285,000
Nuview Union	John Huber	July 1, 2020	1,500	\$196,678

## Schools - Districts

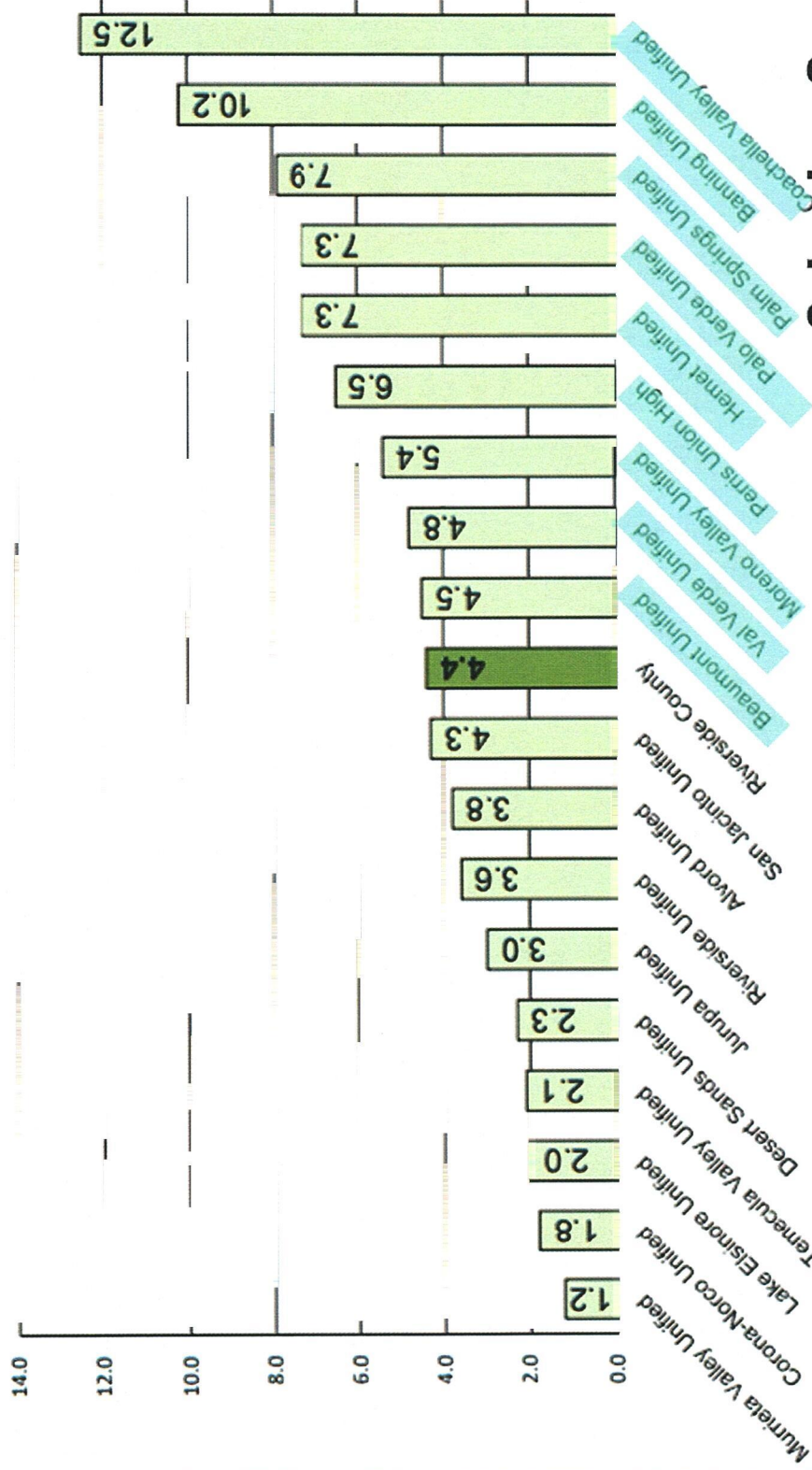
20210-2023 Cohort Dropout Rates  
List of 10 Largest Counties in CA

County	Number of 2023 Cohort Students	2010 Cohort Dropout Rate	2011 Cohort Dropout Rate	2012 Cohort Dropout Rate	2013 Cohort Dropout Rate	2014 Cohort Dropout Rate	2015 Cohort Dropout Rate	2016 Cohort Dropout Rate	2017 Cohort Dropout Rate	2018 Cohort Dropout Rate	2019 Cohort Dropout Rate	2020 Cohort Dropout Rate	2021 Cohort Dropout Rate	2022 Cohort Dropout Rate	2023 Cohort Dropout Rate	2023-2022 Cohort Dropout Rate Change*	2022-2021 Cohort Dropout Rate Change*	2021-2020 Cohort Dropout Rate Change*	2020-2019 Cohort Dropout Rate Change*	2019-2018 Cohort Dropout Rate Change*	2018-2017 Cohort Dropout Rate Change*	2017-2016 Cohort Dropout Rate Change*	2016-2015 Cohort Dropout Rate Change*	2015-2014 Cohort Dropout Rate Change*	2014-2013 Cohort Dropout Rate Change*	2013-2012 Cohort Dropout Rate Change*	2012-2011 Cohort Dropout Rate Change*	2011-2010 Cohort Dropout Rate Change*
Alameda	17,689	17.1	15.1	13.1	11.1	10.6	9.6	8.6	8.0	7.4	7.7	7.2	7.3	6.9	7.4	3	0.1	-0.8	3	-0.4	-10.2	3	0.5	-9.7	3	0.5	-9.7	
Fresno	16,325	21.5	17.3	15.2	14.4	13.3	11.5	10.1	10.0	9.4	9.4	11.2	8.7	8.0	8.7	6	-2.5	-12.8	6	-0.7	-13.5	6	0.7	-12.8	6	0.7	-12.8	
Kern	15,425	17.9	16.6	16.8	16.5	14.5	12.2	10.8	8.3	8.2	8.0	7.9	10.0	8.9	8.9	9	2.1	-7.9	8	-1.1	-9	7	0.0	-9.0	7	0.0	-9.0	
Los Angeles	114,213	18.9	16.7	14.8	12.5	12.6	12.5	10.5	9.6	9.8	10.6	9.5	9.5	8.3	9.2	8	0.0	-9.4	7	-1.2	-10.6	8	0.9	-9.7	8	0.9	-9.7	
Orange	39,870	12.3	9.5	8.9	7.3	8.7	5.7	5.2	5.3	5.3	5.1	5.0	4.0	4.0	4.8	1	-1.0	-8.3	1	0.0	-8.3	1	0.8	-7.5	1	0.8	-7.5	
<b>Riverside</b>	<b>34,085</b>	<b>15.1</b>	<b>13.5</b>	<b>11.1</b>	<b>9.5</b>	<b>9.3</b>	<b>7.7</b>	<b>6.2</b>	<b>5.6</b>	<b>5.8</b>	<b>4.6</b>	<b>5.3</b>	<b>5.1</b>	<b>4.4</b>	<b>5.0</b>	<b>2</b>	<b>-0.2</b>	<b>-10.0</b>	<b>2</b>	<b>-0.7</b>	<b>-10.7</b>	<b>2</b>	<b>0.6</b>	<b>-10.10</b>	<b>2</b>	<b>0.6</b>	<b>-10.10</b>	
Sacramento	20,273	16.2	16.0	13.6	11.3	10.7	10.4	10.2	9.7	9.9	8.7	7.8	10.8	9.8	10.5	10	3.0	-7.4	9	-1.0	-8.4	9	0.7	-7.7	9	0.7	-7.7	
San Bernardino	32,789	19.1	15.7	13.3	12.1	12.2	11.4	10.1	9.5	9.7	9.5	12.0	8.8	8.0	9.2	7	-3.2	-10.3	6	-0.8	-11.1	8	1.2	-9.9	8	1.2	-9.9	
San Diego	40,646	13.1	11.0	10.1	9.2	9.7	8.3	7.9	7.6	7.8	8.3	8.1	7.7	7.1	8.0	4	-0.4	-5.4	5	-0.6	-6.0	4	0.9	-5.1	4	0.9	-5.1	
Santa Clara	21,345	13.9	14.2	12.1	11.1	11.0	11.1	11.9	9.9	9.5	9.0	13.8	7.7	7.0	8.2	4	-6.1	-6.2	4	-0.7	-6.9	5	1.2	-5.7	5	1.2	-5.7	
<b>State of CA</b>	<b>495,492</b>	<b>16.6</b>	<b>14.7</b>	<b>13.1</b>	<b>11.4</b>	<b>11.5</b>	<b>10.7</b>	<b>9.7</b>	<b>9.1</b>	<b>9.6</b>	<b>9.0</b>	<b>8.9</b>	<b>9.4</b>	<b>7.8</b>	<b>8.2</b>	<b>0.5</b>	<b>-7.2</b>	<b>-1.6</b>	<b>-8.8</b>	<b>0.4</b>	<b>-8.8</b>	<b>0.4</b>	<b>0.4</b>	<b>-8.4</b>	<b>0.4</b>	<b>0.4</b>	<b>-8.4</b>	

Schools - County

\* NEW Adjusted Cohort Graduation Rate (ACGR) Rules Applied

# Districts in Riverside County 2023 Cohort Dropout Rates



**District 1 -**  
1. Val Verde Unified

**District 1, 3 & 5 -**  
1. Perris Union High

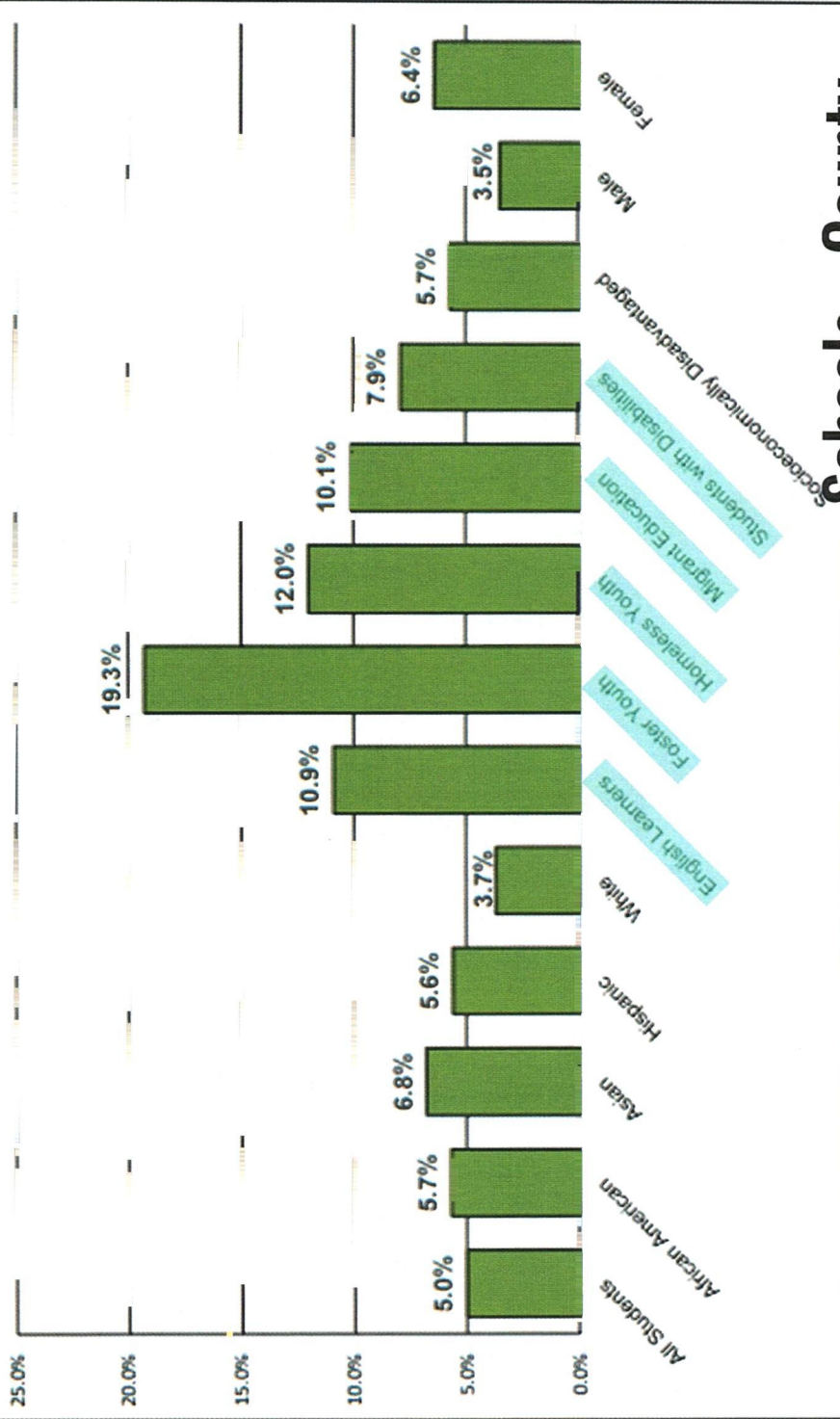
**District 4 -**  
1. Palo Verde Unified  
2. Palm Springs Unified  
3. Coachella Valley Unified

**District 5 -**  
1. Beaumont Unified  
2. Moreno Valley Unified  
3. Hemet Unified  
4. Banning Unified

## Schools - County

Note: NEW Adjusted Cohort Graduation Rate (ACGR) Rules Applied

## 2023 Riverside County Cohort Dropout Rates Student Groups Comparison



## Schools - County

Notes: NEW Adjusted Cohort Graduation Rate (ACGR) Rules Applied



County: Riverside  
CDS Code: 33-00000-00000000

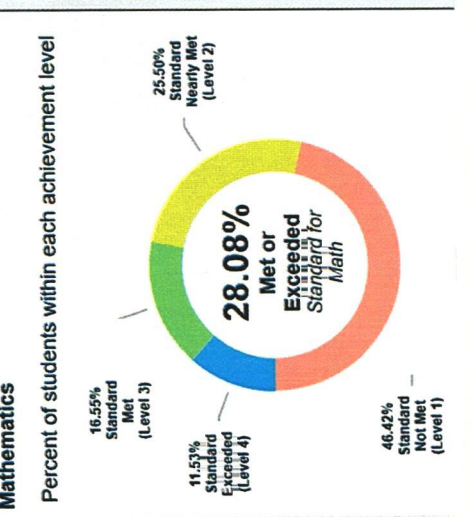
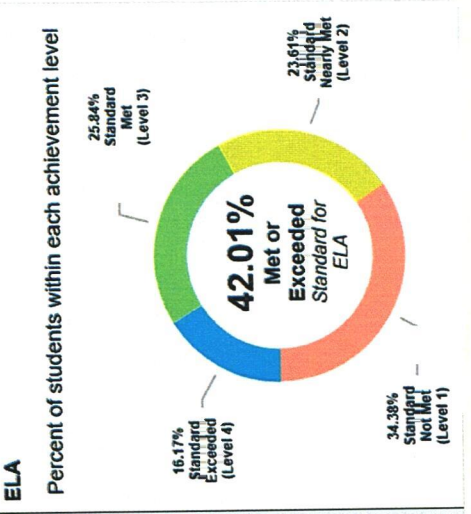
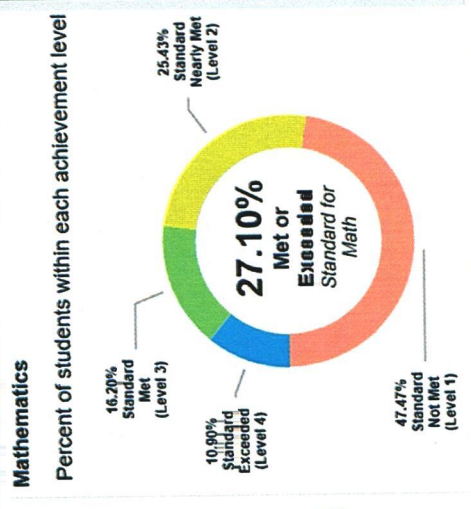
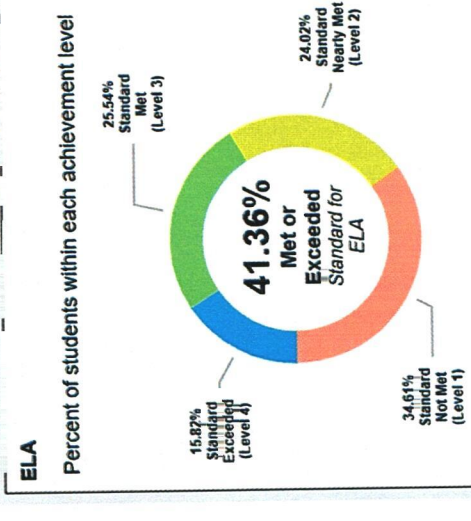
Report Options

Year: 2022-23  
 Student Group: All Students (Default)  
 Grade: All Grades  
 School Year: 2023-24  
 Grade: All Grades  
 Student Group: All Students (Default)  
 School Type: All Schools

County: Riverside  
CDS Code: 33-00000-00000000

Report Options

Year: 2022-23  
 Student Group: All Students (Default)  
 Grade: All Grades  
 School Year: 2023-24  
 Grade: All Grades  
 Student Group: All Students (Default)  
 School Type: All Schools



# Schools - County

Table 4: Riverside County English Language Arts By Year

year	n	% Exceeded	% Met	% Nearly Met	% Not Met
2015	223187	13.00	28.00	27.00	32.00
2016	224420	16.00	29.00	25.00	30.00
2017	225930	16.45	28.70	24.81	30.04
2018	224660	17.44	28.74	24.14	29.69
2019	223421	18.76	29.09	23.74	28.41
2022	216743	15.82	26.35	24.41	33.41
2023	218447	15.82	25.54	24.02	34.61
		47.85%			

Table 5: Riverside County Mathematics By Year

year	n	% Exceeded	% Met	% Nearly Met	% Not Met
2015	223607	9.00	19.00	31.00	41.00
2016	224804	11.00	20.00	30.00	39.00
2017	226526	12.45	19.68	28.54	39.32
2018	224919	13.32	19.43	27.90	39.35
2019	223768	14.42	19.72	27.33	38.53
2022	216846	10.11	16.02	26.13	47.74
2023	218761	10.90	16.20	25.43	47.47
		34.14%			

RIVERSIDE COUNTY  
OFFICE OF EDUCATION  
**2023 CAASPP REPORT**  
English Language Arts, Mathematics, and Science  
OCTOBER 2023

Schools - County

MINUTES OF THE BOARD OF SUPERVISORS  
COUNTY OF RIVERSIDE, STATE OF CALIFORNIA



**PUBLIC COMMENT:**

**24.4**

During the oral communication section of the agenda for Tuesday, May 6, 2025, Nathan Kempe spoke regarding the county budget and the importance of where the money goes.

---

ATTACHMENTS FILED WITH  
CLERK OF THE BOARD

AGENDA NO.  
24.4



Riverside County Board of Supervisors  
Request to Speak

Submit request to the Clerk of the Board (right of podium), Speakers are entitled to three (3) minutes, subject to Board Rules listed on the reverse side of this form. The Board may limit the public input on any item, based on the number of people requesting to speak and the business of the Board.

SPEAKER'S NAME: NATHAN KEMPE (KEMP)

Address: \_\_\_\_\_

City: REVERSB Zip: 92503

Phone #: 818-749-6856

Date: 3/6/25 Agenda # 24

PLEASE STATE YOUR POSITION BELOW:

Position on "Regular" (non-appealed) Agenda Item:

\_\_\_\_\_ Support \_\_\_\_\_ Oppose  Neutral

Note: If you are here for an agenda item that is filed for "Appeal", please state separately your position on the appeal below:

\_\_\_\_\_ Support \_\_\_\_\_ Oppose \_\_\_\_\_ Neutral

I give my 3 minutes to: \_\_\_\_\_

Parking validations available for speakers only – see Clerk of the Board.

## BOARD RULES

### Requests to Address Board on "Agenda" Items:

You may request to be heard on a published agenda item. Requests to be heard must be submitted to the Clerk of the Board before the scheduled meeting time.

### Requests to Address Board on items that are "NOT" on the Agenda:

Notwithstanding any other provisions of these rules, member of the public shall have the right to address the Board during the mid-morning "Oral Communications" segment of the published agenda. Said purpose for address must pertain to issues which are under the direct jurisdiction of the Board of Supervisors. YOUR TIME WILL BE LIMITED TO THREE (3) MINUTES. The Board may limit the public input on any item, based on the number of people requesting to speak and the business of the Board.

### Power Point Presentations/Printed Material:

Speakers who intend to conduct a formalized Power Point presentation or provide printed material must notify the Clerk of the Board's Office by 12 noon on the Monday preceding the Tuesday Board meeting, ensuring that the Clerk's Office has sufficient copies of all printed materials and at least one (1) copy of the Power Point CD. Copies of printed material given to the Clerk (by Monday noon deadline) will be provided to each Supervisor. If you have the need to use the overhead "Elmo" projector at the Board meeting, please ensure your material is clear and with proper contrast, notifying the Clerk well ahead of the meeting, of your intent to use the Elmo. **Speakers are prohibited from bringing signs, placards, or posters into the hearing room.**

### Individual Speaker Limits:

**Individual speakers are limited to a maximum of three (3) minutes.** The Board may limit the public input on any item, based on the number of people requesting to speak and the business of the Board. Please step up to the podium when the Chair calls your name and begin speaking immediately. Pull the microphone to your mouth so that the Board, audience, and audio recording system hear you clearly. Once you start speaking, the "green" podium light will light. The "yellow" light will come on when you have one (1) minute remaining. When you have 30 seconds remaining, the "yellow" light will begin flash, indicating you must quickly wrap up your comments. Your time is up when the "red" light flashes. The Chair adheres to a strict three (3) minutes per speaker. ***Note: If you intend to give your time to a "Group/Organized Presentation", please state so clearly at the very bottom of the reverse side of this form.***

### Group/Organized Presentations:

Group/organized presentations with more than one (1) speaker will be limited to nine (9) minutes at the Chair's discretion. The organizer of the presentation will automatically receive the first three (3) minutes, with the remaining six (6) minutes relinquished by other speakers, as requested by them on a completed "Request to Speak" form, and clearly indicated at the front bottom of the form.

### Addressing the Board & Acknowledgement by Chair:

The Chair will determine what order the speakers will address the Board and will call on all speakers in pairs. The first speaker should immediately step to the podium and begin addressing the Board. The second speaker should take up a position in one of the chamber aisles to quickly step up to the podium after the preceding speaker. This is to afford an efficient and timely Board meeting, giving all attendees the opportunity to make their case. Speakers are prohibited from making personal attacks, and/or using coarse, crude, profane or vulgar language while speaking to the Board members, staff, the public and/or meeting participants. Such behavior, at the discretion of the Board Chair may result in removal from the Board Chambers by Sheriff Deputies.

MINUTES OF THE BOARD OF SUPERVISORS  
COUNTY OF RIVERSIDE, STATE OF CALIFORNIA



**PUBLIC COMMENT:**

**24.5**

During the oral communication section of the agenda for Tuesday, May 6, 2025, Andrew Silva spoke in opposition to the West Campus Upper Plateau project in Riverside.

---

ATTACHMENTS FILED WITH  
CLERK OF THE BOARD

AGENDA NO.  
24.5



Riverside County Board of Supervisors  
Request to Speak

Submit request to the Clerk of the Board (right of podium), Speakers are entitled to three (3) minutes, subject to Board Rules listed on the reverse side of this form. The Board may limit the public input on any item, based on the number of people requesting to speak and the business of the Board.

SPEAKER'S NAME: ANDREW SILVA

Address: \_\_\_\_\_

City: \_\_\_\_\_ Zip: 92508

Phone #: \_\_\_\_\_

Date: 5/6/25 Agenda # 24 PUB COMMENT

PLEASE STATE YOUR POSITION BELOW:

Position on "Regular" (non-appealed) Agenda Item:

\_\_\_\_\_ Support \_\_\_\_\_ Oppose \_\_\_\_\_ Neutral

**Note:** If you are here for an agenda item that is filed for "Appeal", please state separately your position on the appeal below:

\_\_\_\_\_ Support \_\_\_\_\_ Oppose \_\_\_\_\_ Neutral

I give my 3 minutes to: \_\_\_\_\_

Parking validations available for speakers only – see Clerk of the Board.

(Revised: 04/23/2025)

## BOARD RULES

### Requests to Address Board on "Agenda" Items:

You may request to be heard on a published agenda item. Requests to be heard must be submitted to the Clerk of the Board before the scheduled meeting time.

### Requests to Address Board on items that are "NOT" on the Agenda:

Notwithstanding any other provisions of these rules, member of the public shall have the right to address the Board during the mid-morning "Oral Communications" segment of the published agenda. Said purpose for address must pertain to issues which are under the direct jurisdiction of the Board of Supervisors. YOUR TIME WILL BE LIMITED TO THREE (3) MINUTES. The Board may limit the public input on any item, based on the number of people requesting to speak and the business of the Board.

### Power Point Presentations/Printed Material:

Speakers who intend to conduct a formalized Power Point presentation or provide printed material must notify the Clerk of the Board's Office by 12 noon on the Monday preceding the Tuesday Board meeting, ensuring that the Clerk's Office has sufficient copies of all printed materials and at least one (1) copy of the Power Point CD. Copies of printed material given to the Clerk (by Monday noon deadline) will be provided to each Supervisor. If you have the need to use the overhead "Elmo" projector at the Board meeting, please ensure your material is clear and with proper contrast, notifying the Clerk well ahead of the meeting, of your intent to use the Elmo. **Speakers are prohibited from bringing signs, placards, or posters into the hearing room.**

### Individual Speaker Limits:

**Individual speakers are limited to a maximum of three (3) minutes.** The Board may limit the public input on any item, based on the number of people requesting to speak and the business of the Board. Please step up to the podium when the Chair calls your name and begin speaking immediately. Pull the microphone to your mouth so that the Board, audience, and audio recording system hear you clearly. Once you start speaking, the "green" podium light will light. The "yellow" light will come on when you have one (1) minute remaining. When you have 30 seconds remaining, the "yellow" light will begin flash, indicating you must quickly wrap up your comments. Your time is up when the "red" light flashes. The Chair adheres to a strict three (3) minutes per speaker. ***Note: If you intend to give your time to a "Group/Organized Presentation", please state so clearly at the very bottom of the reverse side of this form.***

### Group/Organized Presentations:

Group/organized presentations with more than one (1) speaker will be limited to nine (9) minutes at the Chair's discretion. The organizer of the presentation will automatically receive the first three (3) minutes, with the remaining six (6) minutes relinquished by other speakers, as requested by them on a completed "Request to Speak" form, and clearly indicated at the front bottom of the form.

### Addressing the Board & Acknowledgement by Chair:

The Chair will determine what order the speakers will address the Board and will call on all speakers in pairs. The first speaker should immediately step to the podium and begin addressing the Board. The second speaker should take up a position in one of the chamber aisles to quickly step up to the podium after the preceding speaker. This is to afford an efficient and timely Board meeting, giving all attendees the opportunity to make their case. Speakers are prohibited from making personal attacks, and/or using coarse, crude, profane or vulgar language while speaking to the Board members, staff, the public and/or meeting participants. Such behavior, at the discretion of the Board Chair may result in removal from the Board Chambers by Sheriff Deputies.



### Contacts

Jen Larratt-Smith  
(951) 384-1916  
[jarrattsmith@gmail.com](mailto:jarrattsmith@gmail.com)

Mike McCarthy  
(510) 928-8256  
[mikem@radicalresearch.llc](mailto:mikem@radicalresearch.llc)

Website: [tinyurl.com/rivnow](http://tinyurl.com/rivnow)

May 4, 2025

March JPA Commission  
March JPA Clerk  
Planner Mr. Tomich  
March Joint Powers Authority (MJPA)

**Re: Unstable Project Description for SCH #2021110304 - West Campus Upper Plateau**

Honorable Commissioners, Clerk, and Lead Planner,

R-NOW thanks you for the opportunity to provide comments on the MJPA Revised Final Environmental Impact Report on the West Campus Upper Plateau Project (the Project). R-NOW has opposed the proposed high-cube mega-warehouse project since February 2022 due to its incompatibility with surrounding open space and residential land-uses.

This comment letter focuses on the instability of the Final EIR project description. Our comments reflect the documents duly noticed and agendized in the packet for the Special Meeting of March Joint Powers Commission on May 12, 2025<sup>1</sup>, the West Campus Upper Plateau project website hosted by the March JPA<sup>2</sup>, comments made by multiple March JPA representatives to community stakeholders at meetings the week of April 27, 2025, community advertising via texts, emails, and other social media by the project applicant, and the withdrawal of the two speculative warehouse plot plans in item 10(1) of the May 12 public hearing. Community stakeholders are being told that this is the "March Innovation Hub" and that it will be a 'Medical manufacturing facility' or 'Aerospace Manufacturing Facility' or 'Manufacturing training facility'.

The Revised Final EIR Executive Summary Project Description (April, 2025) specifically lists an assumed project buildout of over 2.56 million square feet of 'high-cube fulfillment center warehouses' and 0.5 million square feet of 'high-cube cold storage warehouse use'. That is the project description that has been analyzed and community members have commented on in the draft EIR in January 2023, the revised draft EIR in December 2023, and the initial Final EIR in June, 2024. It is still the project description in May 2025.

<sup>1</sup> <https://marchjpa.com/wp-content/uploads/2025/05/05-12-2025-JPC-Packet.pdf>

<sup>2</sup> <https://marchjpa.com/mjpa-meridian-west-campus/>

5/6/2025  
Public Comments  
Andrew Silva

Additional documentation provided in Appendix R-7 as the Modified Alternative 2 Impact Comparison<sup>3</sup> shows that the project is still analyzed with all warehouses as an assumed buildout for the preferred Modified Alternative 2 scenario.

**TABLE 1: COMPARISON OF LAND USE SUMMARY**

Land Uses	Modified Alternative 2		2024 DEIR-Project	
	Quantity	Units <sup>1</sup>	Quantity	Units <sup>1</sup>
High-Cube Fulfillment Center Warehouse	2,561.689	TSF	2,562.561	TSF
High-Cube Cold Storage Warehouse	500.000	TSF	500.000	TSF
<b>Business Park</b>				
Office	168.000	TSF	384.121	TSF
Warehouse	392.000	TSF	862.282	TSF
<b>Mixed Use</b>				
Business Park - Office	81.299	TSF	144.830	TSF
Business Park - Warehouse	189.698	TSF	337.936	TSF
Retail	90.333	TSF	160.921	TSF
Active Park	42.20	AC	42.20	AC
Public Park	18.08	AC	18.08	AC

<sup>1</sup> TSF = thousand square feet; AC = Acres

R-NOW opposes high-cube mega-warehouses near our homes, open space, and parks. The project document analyzes a buildout of high-cube warehouse land use for the industrial portion of the project, and business-enterprise warehouses for the Business Park and Mixed-use. Entitlement of industrial land-use near our homes will allow high-cube warehouses as a 'by right' approval - as they will conform to the approved zoning and development standards. Business-enterprise warehouses will also be allowed 'by right' in the Business Park and Mixed-Use parcels. There is no restriction in the Specific Plan that prohibits warehouses as an allowed use within the West Campus Upper Plateau.

The West Campus Upper Plateau no longer has any proposed buildings as part of its entitlement, due to the surprising withdrawal of Building B and C plot plans. As a result, it is no longer clear what the project will look like as these buildings have been a stable feature of the project since February, 2022.

Any representation by the project applicant or March JPA as the lead agency that the West Campus is no longer a high-cube warehouse project should be construed as an unstable project description. Established case law indicates that an unstable project description undermines CEQA's purpose of ensuring informed decision-making, public participation, and protecting the environment. If warehouses are no longer the intended buildout of this project, then the EIR project description is no longer valid and requires recirculation.

<sup>3</sup> <https://marchjpa.com/wp-content/uploads/2025/04/R-7.-Modified-Alternative-2-Impact-Comparison.pdf>

Non-warehouse land-uses are not analyzed in the Final EIR Executive Summary or Appendix R-7 Modified Alternative 2 Impact Comparison. Aerospace, education, and manufacturing land-uses have unique environmental impacts that need to be analyzed if that is the proposed project buildout; they need to be shown via analysis to be less environmentally impactful than high-cube warehouses for all environmental areas of concern.

Section 15088.5(b) of CEQA Guidance indicates that 'a lead agency is required to recirculate an EIR when significant new information is added to the EIR after public notice is given of the draft EIR for public review...but before certification.' A change in the project description is significant new information.

We urge the commission to not be duped by the pinky promise of the developer to make this a manufacturing hub. The promise isn't enforceable without written restrictions on high-cube warehouses in the Specific Plan and this project is still going to result in high-cube warehouses. If a manufacturing project or innovation hub is now proposed, the environmental documentation needs to reflect the proposed buildout of a manufacturing and innovation hub, not a high-cube warehouse industrial park.

Sincerely,

Jennifer Larratt-Smith - Chair

Mike McCarthy - Vice-Chair

R-NOW

MINUTES OF THE BOARD OF SUPERVISORS  
COUNTY OF RIVERSIDE, STATE OF CALIFORNIA



**PUBLIC COMMENT:**

**24.6**

During the oral communication section of the agenda for Tuesday, May 6, 2025, Donna Stephenson spoke in opposition to the Serrano Commerce Center project in Temescal Valley.

---

**ATTACHMENTS FILED WITH  
CLERK OF THE BOARD**

**AGENDA NO.  
24.6**



Riverside County Board of Supervisors  
Request to Speak

Submit request to Clerk of Board (right of podium), Speakers are entitled to three (3) minutes, subject to Board Rules listed on the reverse side of this form. The Board may limit the public input on any item, based on the number of people requesting to speak and the business of the Board.

SPEAKER'S NAME: Danna Stephenson

Address: 24508 Crestley Dr.  
(Only if follow-up mail response requested)

City: Corona Zip: 92883

Phone #: 951 836-4488

Date: 5/9/2025 Agenda # public comment

PLEASE STATE YOUR POSITION BELOW:

Position on "Regular" (non-appealed) Agenda Item:

\_\_\_\_\_ Support \_\_\_\_\_ Oppose \_\_\_\_\_ Neutral

**Note:** If you are here for an agenda item that is filed for "Appeal", please state separately your position on the appeal below:

\_\_\_\_\_ Support \_\_\_\_\_ Oppose \_\_\_\_\_ Neutral

I give my 3 minutes to: \_\_\_\_\_

Parking validations available for speakers only – see Clerk of the Board.

(Revised: 06/13/2024)

## BOARD RULES

### Requests to Address Board on "Agenda" Items:

You may request to be heard on a published agenda item. Requests to be heard must be submitted to the Clerk of the Board before the scheduled meeting time.

### Requests to Address Board on items that are "NOT" on the Agenda:

Notwithstanding any other provisions of these rules, member of the public shall have the right to address the Board during the mid-morning "Oral Communications" segment of the published agenda. Said purpose for address must pertain to issues which are under the direct jurisdiction of the Board of Supervisors. YOUR TIME WILL BE LIMITED TO THREE (3) MINUTES. The Board may limit the public input on any item, based on the number of people requesting to speak and the business of the Board.

### Power Point Presentations/Printed Material:

Speakers who intend to conduct a formalized Power Point presentation or provide printed material must notify the Clerk of the Board's Office by 12 noon on the Monday preceding the Tuesday Board meeting, ensuring that the Clerk's Office has sufficient copies of all printed materials and at least one (1) copy of the Power Point CD. Copies of printed material given to the Clerk (by Monday noon deadline) will be provided to each Supervisor. If you have the need to use the overhead "Elmo" projector at the Board meeting, please ensure your materials are clear and with proper contrast, notifying the Clerk well ahead of the meeting, of your intent to use the Elmo. **Speakers are prohibited from bringing signs, placards, or posters into the hearing room.**

### Individual Speaker Limits:

Individual speakers are limited to a maximum of three (3) minutes. The Board may limit the public input on any item, based on the number of people requesting to speak and the business of the Board. Please step up to the podium when the Chair calls your name and begin speaking immediately. Pull the microphone to your mouth so that the Board, audience, and audio recording system hear you clearly. Once you start speaking, the "green" podium light will light. The "yellow" light will come on when you have one (1) minute remaining. When you have 30 seconds remaining, the "yellow" light will begin flash, indicating you must quickly wrap up your comments. Your time is up when the "red" light flashes. The Chair adheres to a strict three (3) minutes per speaker. **Note: If you intend to give your time to a "Group/Organized Presentation", please state so clearly at the very bottom of the reverse side of this form.**

### Group/Organized Presentations:

Group/organized presentations with more than one (1) speaker will be limited to nine (9) minutes at the Chair's discretion. The organizer of the presentation will automatically receive the first three (3) minutes, with the remaining six (6) minutes relinquished by other speakers, as requested by them on a completed "Request to Speak" form, and clearly indicated at the front bottom of the form.

### Addressing the Board & Acknowledgement by Chair:

The Chair will determine what order the speakers will address the Board and will call on all speakers in pairs. The first speaker should immediately step to the podium and begin addressing the Board. The second speaker should take up a position in one of the chamber aisles to quickly step up to the podium after the preceding speaker. This is to afford an efficient and timely Board meeting, giving all attendees the opportunity to make their case. Speakers are prohibited from making personal attacks, and/or using coarse, crude, profane or vulgar language while speaking to the Board members, staff, the public and/or meeting participants. Such behavior, at the discretion of the Board Chair may result in removal from the Board Chambers by Sheriff Deputies.

MINUTES OF THE BOARD OF SUPERVISORS  
COUNTY OF RIVERSIDE, STATE OF CALIFORNIA



**PUBLIC COMMENT:**

**24.7**

During the oral communication section of the agenda for Tuesday, May 6, 2025, Roy Bleckert spoke regarding the importance of transparency with Government.

---

**ATTACHMENTS FILED WITH  
CLERK OF THE BOARD**

**AGENDA NO.  
24.7**



Riverside County Board of Supervisors  
Request to Speak

Submit request to the Clerk of the Board (right of podium), Speakers are entitled to three (3) minutes, subject to Board Rules listed on the reverse side of this form. The Board may limit the public input on any item, based on the number of people requesting to speak and the business of the Board.

SPEAKER'S NAME: Roy Butcher

Address: \_\_\_\_\_

City: \_\_\_\_\_ Zip: \_\_\_\_\_

Phone #: \_\_\_\_\_

Date: \_\_\_\_\_ Agenda # PUBLIC COMMENTS

PLEASE STATE YOUR POSITION BELOW:

Position on "Regular" (non-appealed) Agenda Item:

\_\_\_\_\_ Support \_\_\_\_\_ Oppose \_\_\_\_\_ Neutral

**Note:** If you are here for an agenda item that is filed for "Appeal", please state separately your position on the appeal below:

\_\_\_\_\_ Support \_\_\_\_\_ Oppose \_\_\_\_\_ Neutral

I give my 3 minutes to: \_\_\_\_\_

Parking validations available for speakers only – see Clerk of the Board.

(Revised: 04/23/2025)

## BOARD RULES

### Requests to Address Board on "Agenda" Items:

You may request to be heard on a published agenda item. Requests to be heard must be submitted to the Clerk of the Board before the scheduled meeting time.

### Requests to Address Board on items that are "NOT" on the Agenda:

Notwithstanding any other provisions of these rules, member of the public shall have the right to address the Board during the mid-morning "Oral Communications" segment of the published agenda. Said purpose for address must pertain to issues which are under the direct jurisdiction of the Board of Supervisors. YOUR TIME WILL BE LIMITED TO THREE (3) MINUTES. The Board may limit the public input on any item, based on the number of people requesting to speak and the business of the Board.

### Power Point Presentations/Printed Material:

Speakers who intend to conduct a formalized Power Point presentation or provide printed material must notify the Clerk of the Board's Office by 12 noon on the Monday preceding the Tuesday Board meeting, ensuring that the Clerk's Office has sufficient copies of all printed materials and at least one (1) copy of the Power Point CD. Copies of printed material given to the Clerk (by Monday noon deadline) will be provided to each Supervisor. If you have the need to use the overhead "Elmo" projector at the Board meeting, please ensure your material is clear and with proper contrast, notifying the Clerk well ahead of the meeting, of your intent to use the Elmo. **Speakers are prohibited from bringing signs, placards, or posters into the hearing room.**

### Individual Speaker Limits:

**Individual speakers are limited to a maximum of three (3) minutes.** The Board may limit the public input on any item, based on the number of people requesting to speak and the business of the Board. Please step up to the podium when the Chair calls your name and begin speaking immediately. Pull the microphone to your mouth so that the Board, audience, and audio recording system hear you clearly. Once you start speaking, the "green" podium light will light. The "yellow" light will come on when you have one (1) minute remaining. When you have 30 seconds remaining, the "yellow" light will begin flash, indicating you must quickly wrap up your comments. Your time is up when the "red" light flashes. The Chair adheres to a strict three (3) minutes per speaker. ***Note: If you intend to give your time to a "Group/Organized Presentation", please state so clearly at the very bottom of the reverse side of this form.***

### Group/Organized Presentations:

Group/organized presentations with more than one (1) speaker will be limited to nine (9) minutes at the Chair's discretion. The organizer of the presentation will automatically receive the first three (3) minutes, with the remaining six (6) minutes relinquished by other speakers, as requested by them on a completed "Request to Speak" form, and clearly indicated at the front bottom of the form.

### Addressing the Board & Acknowledgement by Chair:

The Chair will determine what order the speakers will address the Board and will call on all speakers in pairs. The first speaker should immediately step to the podium and begin addressing the Board. The second speaker should take up a position in one of the chamber aisles to quickly step up to the podium after the preceding speaker. This is to afford an efficient and timely Board meeting, giving all attendees the opportunity to make their case. Speakers are prohibited from making personal attacks, and/or using coarse, crude, profane or vulgar language while speaking to the Board members, staff, the public and/or meeting participants. Such behavior, at the discretion of the Board Chair may result in removal from the Board Chambers by Sheriff Deputies.

MINUTES OF THE BOARD OF SUPERVISORS  
COUNTY OF RIVERSIDE, STATE OF CALIFORNIA



**PUBLIC COMMENT:**

**24.8**

During the oral communication section of the agenda for Tuesday, May 6, 2025, Lisa Blodgett spoke in opposition to the Kristin Hoffman Outcomes for Pets contract and the Animal Services crisis.

---

**ATTACHMENTS FILED WITH  
CLERK OF THE BOARD**

**AGENDA NO.  
24.8**

# Online



## Riverside County Board of Supervisors Request to Speak

Submit request to Clerk of Board (right of podium), Speakers are entitled to three (3) minutes, subject to Board Rules listed on the reverse side of this form. The Board may limit the public input on any item, based on the number of people requesting to speak and the business of the Board.

SPEAKER'S NAME: Lisa Blodgett

Address: \_\_\_\_\_  
(Only if follow-up mail response requested)

City: \_\_\_\_\_ Zip: \_\_\_\_\_

Phone #: \_\_\_\_\_

Date: \_\_\_\_\_ Agenda # Public Comment

### PLEASE STATE YOUR POSITION BELOW:

Position on "Regular" (non-appealed) Agenda Item:

\_\_\_\_\_ Support \_\_\_\_\_ Oppose \_\_\_\_\_ Neutral

**Note:** If you are here for an agenda item that is filed for "Appeal", please state separately your position on the appeal below:

\_\_\_\_\_ Support \_\_\_\_\_ Oppose \_\_\_\_\_ Neutral

I give my 3 minutes to: \_\_\_\_\_

Parking validations available for speakers only – see Clerk of the Board.

(Revised: 06/13/2024)

## BOARD RULES

### Requests to Address Board on "Agenda" Items:

You may request to be heard on a published agenda item. Requests to be heard must be submitted to the Clerk of the Board before the scheduled meeting time.

### Requests to Address Board on items that are "NOT" on the Agenda:

Notwithstanding any other provisions of these rules, member of the public shall have the right to address the Board during the mid-morning "Oral Communications" segment of the published agenda. Said purpose for address must pertain to issues which are under the direct jurisdiction of the Board of Supervisors. YOUR TIME WILL BE LIMITED TO THREE (3) MINUTES. The Board may limit the public input on any item, based on the number of people requesting to speak and the business of the Board.

### Power Point Presentations/Printed Material:

Speakers who intend to conduct a formalized Power Point presentation or provide printed material must notify the Clerk of the Board's Office by 12 noon on the Monday preceding the Tuesday Board meeting, ensuring that the Clerk's Office has sufficient copies of all printed materials and at least one (1) copy of the Power Point CD. Copies of printed material given to the Clerk (by Monday noon deadline) will be provided to each Supervisor. If you have the need to use the overhead "Elmo" projector at the Board meeting, please ensure your material is clear and with proper contrast, notifying the Clerk well ahead of the meeting, of your intent to use the Elmo. **Speakers are prohibited from bringing signs, placards, or posters into the hearing room.**

### Individual Speaker Limits:

**Individual speakers are limited to a maximum of three (3) minutes.** The Board may limit the public input on any item, based on the number of people requesting to speak and the business of the Board. Please step up to the podium when the Chair calls your name and begin speaking immediately. Pull the microphone to your mouth so that the Board, audience, and audio recording system hear you clearly. Once you start speaking, the "green" podium light will light. The "yellow" light will come on when you have one (1) minute remaining. When you have 30 seconds remaining, the "yellow" light will begin flash, indicating you must quickly wrap up your comments. Your time is up when the "red" light flashes. The Chair adheres to a strict three (3) minutes per speaker. ***Note: If you intend to give your time to a "Group/Organized Presentation", please state so clearly at the very bottom of the reverse side of this form.***

### Group/Organized Presentations:

Group/organized presentations with more than one (1) speaker will be limited to nine (9) minutes at the Chair's discretion. The organizer of the presentation will automatically receive the first three (3) minutes, with the remaining six (6) minutes relinquished by other speakers, as requested by them on a completed "Request to Speak" form, and clearly indicated at the front bottom of the form.

### Addressing the Board & Acknowledgement by Chair:

The Chair will determine what order the speakers will address the Board and will call on all speakers in pairs. The first speaker should immediately step to the podium and begin addressing the Board. The second speaker should take up a position in one of the chamber aisles to quickly step up to the podium after the preceding speaker. This is to afford an efficient and timely Board meeting, giving all attendees the opportunity to make their case. Speakers are prohibited from making personal attacks, and/or using coarse, crude, profane or vulgar language while speaking to the Board members, staff, the public and/or meeting participants. Such behavior, at the discretion of the Board Chair may result in removal from the Board Chambers by Sheriff Deputies.

**Flores, Kate**

---

**From:** Acquia Mail  
**Sent:** Monday, May 5, 2025 3:53 PM  
**To:** lisablodgett12@gmail.com  
**Cc:** Clerk of the Board  
**Subject:** Request to Speak Web Submission



Thank you for submitting your request to speak. The Clerk of the Board office has received your request and will be prepared to allow you to speak when your item is called. To attend the meeting, please call (669) 900-6833 and use **Meeting ID # 864 4411 6015 . Password is 20250506**. You will be muted until your item is pulled and your name is called. Please dial in at 9:00 am with the phone number you provided in the form so you can be identified during the meeting.

Submitted on May 5, 2025

Submitted values are:

**First Name**

Lisa

**Last Name**

Blodgett

**Address (Street, City and Zip)**

47970 Via Nice

**Phone**

7603990113

**Email**

lisablodgett12@gmail.com

**Agenda Date**

05/06/2025

**Agenda Item # or Public Comment**

public comment

**State your position below**

Neutral

**Do you need a Spanish translator?**

No