

SUBMITTAL TO THE BOARD OF SUPERVISORS  
COUNTY OF RIVERSIDE, STATE OF CALIFORNIA



ITEM: 3.23  
(ID # 27859)

**MEETING DATE:**

Tuesday, May 20, 2025

**FROM :** FIRE DEPARTMENT

**SUBJECT:** FIRE DEPARTMENT: Hazardous Fire Area Closures in the Unincorporated Areas of Riverside County effective June 15, 2025; Districts All; [\$0]

**RECOMMENDED MOTION:** That the Board of Supervisors approve the closure of the Hazardous Fire Areas in the unincorporated area of Riverside County outlined in Exhibit A effective June 15, 2025, until such time as the County Fire Chief permits them to be re-open.

**ACTION:**

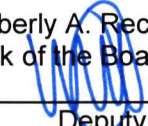
  
Bill Weiser, Fire Department Chief 5/4/2025

---

**MINUTES OF THE BOARD OF SUPERVISORS**

On motion of Supervisor Gutierrez, seconded by Supervisor Spiegel and duly carried by unanimous vote, IT WAS ORDERED that the above matter is approved as recommended.

Ayes: Medina, Spiegel, Washington, Perez and Gutierrez  
Nays: None  
Absent: None  
Date: May 20, 2025  
xc: Fire

Kimberly A. Rector  
Clerk of the Board  
By:   
Deputy

**SUBMITTAL TO THE BOARD OF SUPERVISORS COUNTY OF RIVERSIDE,  
STATE OF CALIFORNIA**

<b>FINANCIAL DATA</b>	<b>Current Fiscal Year:</b>	<b>Next Fiscal Year:</b>	<b>Total Cost:</b>	<b>Ongoing Cost</b>
<b>COST</b>	\$ 0	\$ 0	\$ 0	\$ 0
<b>NET COUNTY COST</b>	\$ 0	\$ 0	\$ 0	\$ 0
<b>SOURCE OF FUNDS:</b> N/A			<b>Budget Adjustment:</b> No	
			<b>For Fiscal Year:</b> 2024/25-25/26	

**C.E.O. RECOMMENDATION:** Approve

**BACKGROUND:**

**Summary**

Riverside County Ordinance 787 Adopting the 2022 California Fire Code requires the Board of Supervisors approval for the closure of hazardous fire areas for more than fifteen (15) days. Due to the potential of damaging human caused fires, the County Fire Chief has determined these areas should be closed except on public roadways and on inhabited areas of private property within the closure areas. The potential for large damaging fires occurring this year may be enhanced by the extreme vegetation growth experienced throughout Riverside County.

The Hazardous Fire Area closures shall become effective Sunday, June 15, 2025, and remain in effect until the County Fire Chief determines that the fuel and weather conditions are safe for the public and the threat of wildfire is minimized.

**Impact on Residents and Businesses**

There may be a reduction of recreational activities in some areas due to the closures.

**Additional Fiscal Information**

There is no fiscal impact with the closure of these areas.

**ATTACHMENT:**

Exhibit A: Fire Closure Areas in Riverside County

  
Rebecca S Cortez, Principal Management Analyst 5/13/2025



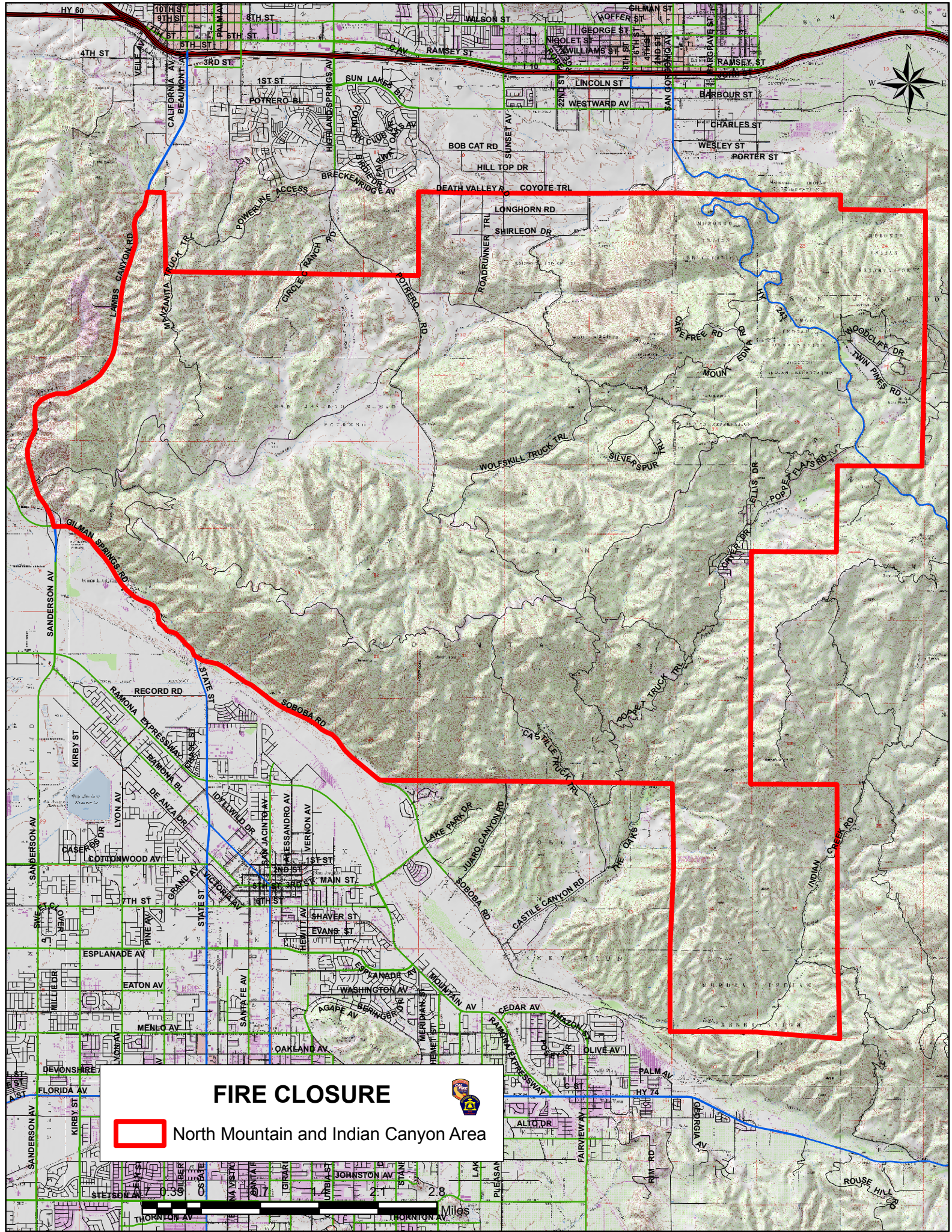
# **EXHIBIT A**

## **FIRE CLOSURE AREAS IN RIVERSIDE COUNTY**

The Fire Closure areas in Riverside County are as follows:


North Mountain and Indian Canyon  
Whitewater Canyon  
Ramona Bowl – Closed daily 12:00 pm to sunrise  
Bautista Canyon  
Steel Peak  
Eagle Canyon / Tin Mine Area





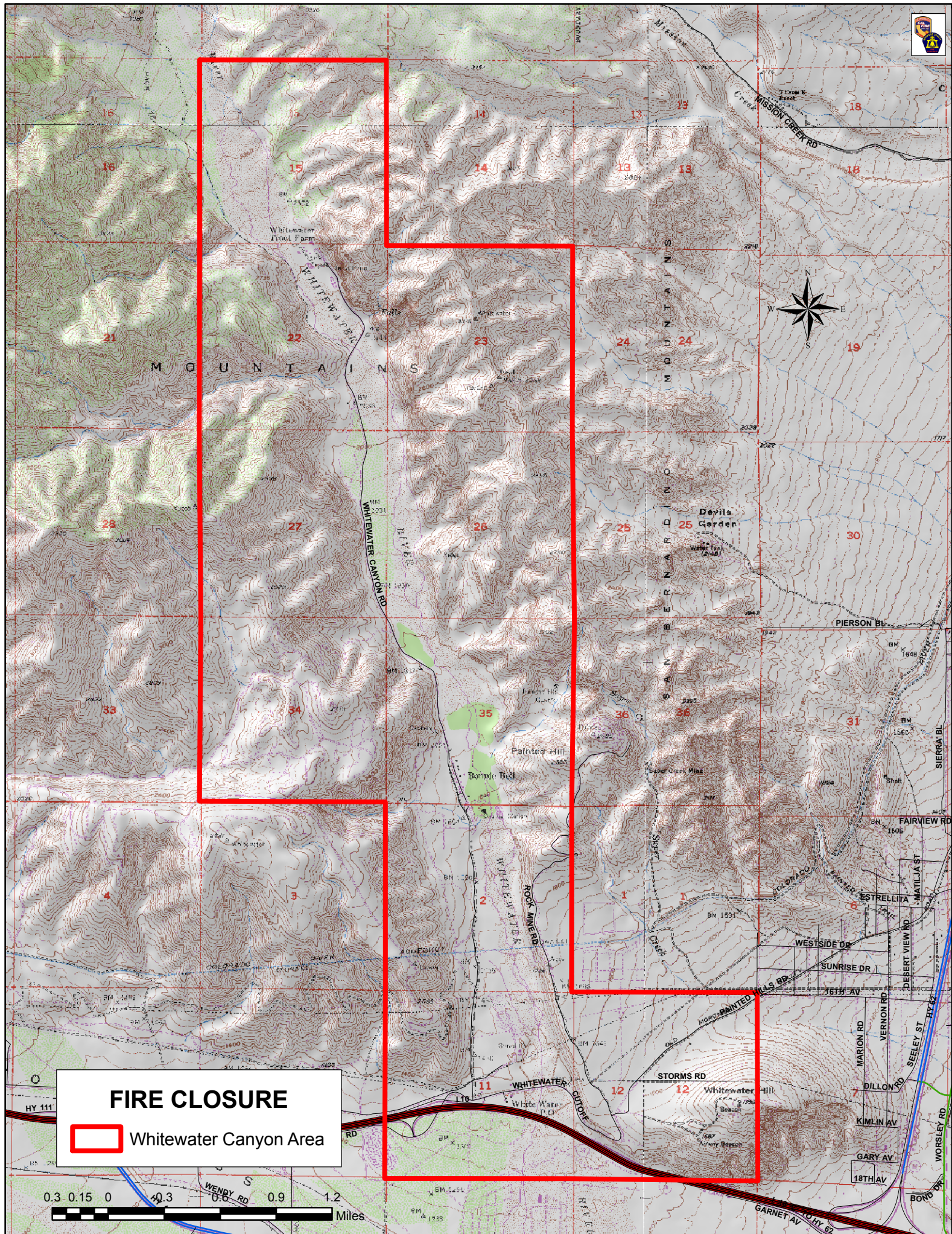
# FIRE CLOSURE



 North Mountain and Indian Canyon Area







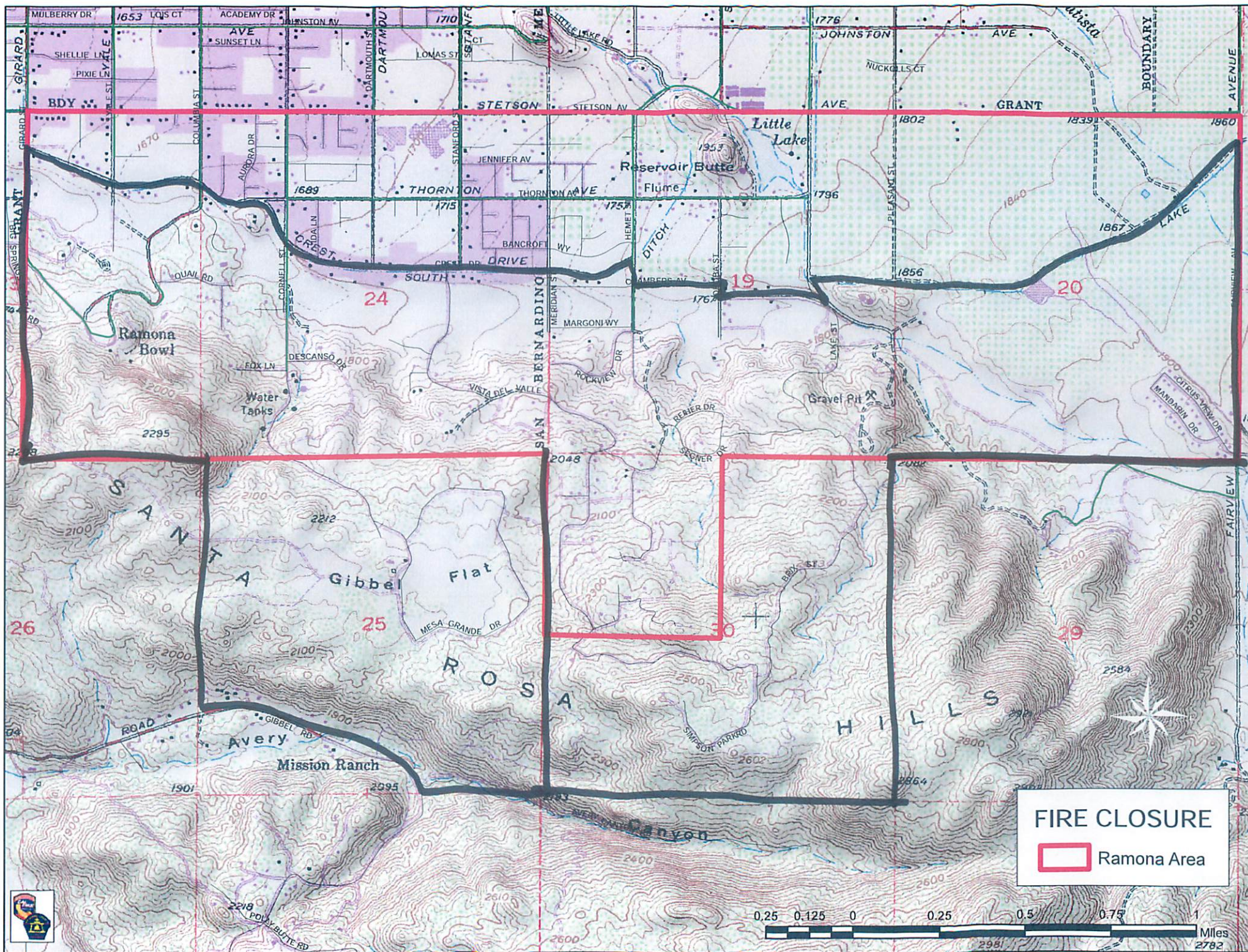
## FIRE CLOSURE



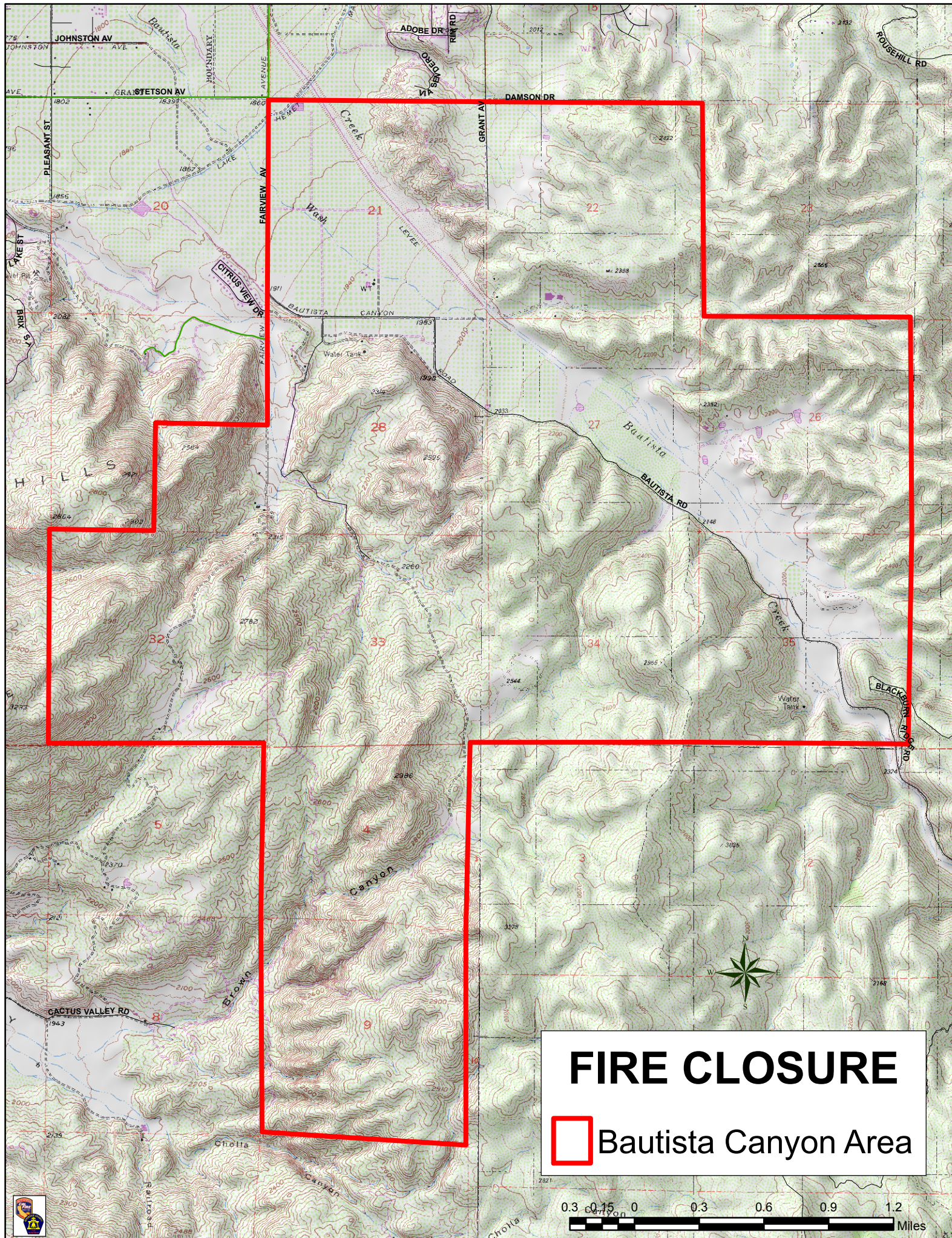
Whittewater Canyon Area

0.3 0.15 0 0.3 0.6 0.9 1.2 Miles





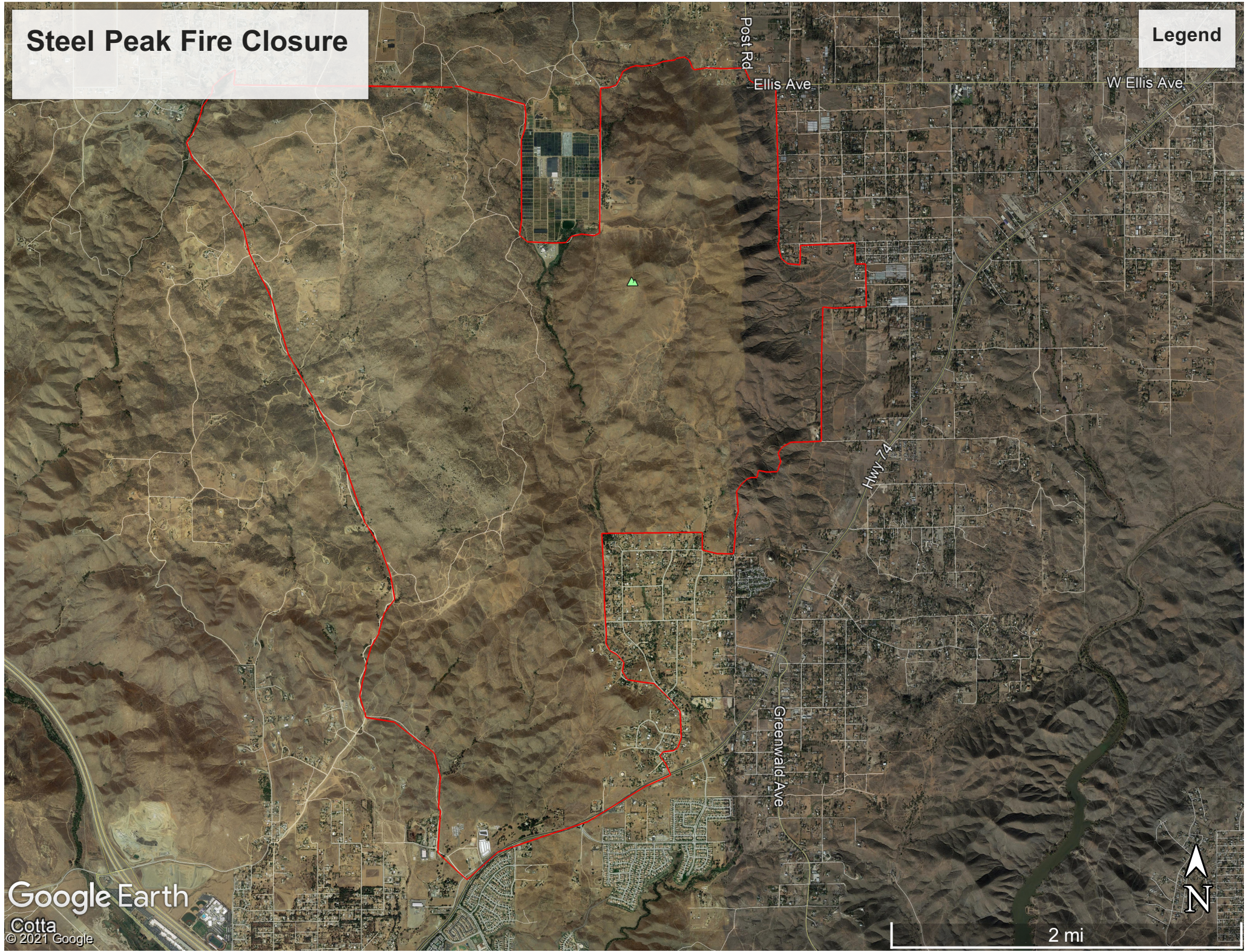






# Steel Peak Fire Closure

## Legend



Google Earth

Cotta  
© 2021 Google


2 mi

N



# Eagle Canyon / Tin Mine

## Legend

 Eagle Cyn / Tin Mine Fire Closures

