

MINUTES OF THE BOARD OF SUPERVISORS
COUNTY OF RIVERSIDE, STATE OF CALIFORNIA



PUBLIC COMMENT:

24.1

During the oral communication section of the agenda for Tuesday, November 18, 2025, Miles Sylvester spoke in support of development in Mead Valley and concerns with the Rural Association of Mead Valley.

**ATTACHMENTS FILED WITH
CLERK OF THE BOARD**

**AGENDA NO.
24.1**

BOARD RULES

Requests to Address Board on "Agenda" Items:

You may request to be heard on a published agenda item. Requests to be heard must be submitted to the Clerk of the Board before the scheduled meeting time.

Requests to Address Board on items that are "NOT" on the Agenda:

Notwithstanding any other provisions of these rules, member of the public shall have the right to address the Board during the mid-morning "Oral Communications" segment of the published agenda. Said purpose for address must pertain to issues which are under the direct jurisdiction of the Board of Supervisors. YOUR TIME WILL BE LIMITED TO THREE (3) MINUTES. The Board may limit the public input on any item, based on the number of people requesting to speak and the business of the Board.

Power Point Presentations/Printed Material:

Speakers who intend to conduct a formalized Power Point presentation or provide printed material must notify the Clerk of the Board's Office by 12 noon on the Monday preceding the Tuesday Board meeting, ensuring that the Clerk's Office has sufficient copies of all printed materials and at least one (1) copy of the Power Point CD. Copies of printed material given to the Clerk (by Monday noon deadline) will be provided to each Supervisor. If you have the need to use the overhead "Elmo" projector at the Board meeting, please ensure your material is clear and with proper contrast, notifying the Clerk well ahead of the meeting, of your intent to use the Elmo. **Speakers are prohibited from bringing signs, placards, or posters into the hearing room.**

Individual Speaker Limits:

Individual speakers are limited to a maximum of three (3) minutes. The Board may limit the public input on any item, based on the number of people requesting to speak and the business of the Board. Please step up to the podium when the Chair calls your name and begin speaking immediately. Pull the microphone to your mouth so that the Board, audience, and audio recording system hear you clearly. Once you start speaking, the "green" podium light will light. The "yellow" light will come on when you have one (1) minute remaining. When you have 30 seconds remaining, the "yellow" light will begin flash, indicating you must quickly wrap up your comments. Your time is up when the "red" light flashes. The Chair adheres to a strict three (3) minutes per speaker. **Note: If you intend to give your time to a "Group/Organized Presentation", please state so clearly at the very bottom of the reverse side of this form.**

Group/Organized Presentations:

Group/organized presentations with more than one (1) speaker will be limited to nine (9) minutes at the Chair's discretion. The organizer of the presentation will automatically receive the first three (3) minutes, with the remaining six (6) minutes relinquished by other speakers, as requested by them on a completed "Request to Speak" form, and clearly indicated at the front bottom of the form.

Addressing the Board & Acknowledgement by Chair:

The Chair will determine what order the speakers will address the Board and will call on all speakers in pairs. The first speaker should immediately step to the podium and begin addressing the Board. The second speaker should take up a position in one of the chamber aisles to quickly step up to the podium after the preceding speaker. This is to afford an efficient and timely Board meeting, giving all attendees the opportunity to make their case. Speakers are prohibited from making personal attacks, and/or using coarse, crude, profane or vulgar language while speaking to the Board members, staff, the public and/or meeting participants. Such behavior, at the discretion of the Board Chair may result in removal from the Board Chambers by Sheriff Deputies.

MINUTES OF THE BOARD OF SUPERVISORS
COUNTY OF RIVERSIDE, STATE OF CALIFORNIA



PUBLIC COMMENT:

24.2

During the oral communication section of the agenda for Tuesday, November 18, 2025, Greg Langworthy, Sharon Meill, Cyndie Allen, Shari Franklin, Jose Manuel Regueiro, Ceci Andrade Truman spoke regarding the REIT District 63 General Election audit results and ROV transparency.

**ATTACHMENTS FILED WITH
CLERK OF THE BOARD**

**AGENDA NO.
24.2**



Junta de Supervisores del Condado de Riverside
Solicitud de uso de la palabra

Presentar la solicitud al Secretario de la Junta (a la derecha del podio), Los oradores tienen derecho a tres (3) minutos, sujeto a de las Reglas de la Junta enumeradas en el reverso de este formulario. La Junta Directiva puede limitar la opinión del público sobre cualquier tema, según el número de personas que soliciten hablar y los asuntos de la junta.

NOMBRE DEL ORADOR: Greg Langworthy

Dirección: _____
(solo si se solicita respuesta por correo electrónico de seguimiento)

Cuidad y Código postal: _____

Teléfono #: _____

Fecha: 11/18/2025 Agenda # Public Comment

POR FAVOR, INDIQUE SU POSTURA A CONTINUACIÓN:

Postura sobre el tema del orden del día "ordinario" (no apelado):

_____ Apoyo _____ Oposición _____ Neutral

Nota: Si está aquí para un tema de la agenda que se presentó para "Apelación", indique por separado su postura sobre la apelación a continuación:

_____ Apoyo _____ Oposición _____ Neutral

Le doy mis 3 minutos a: _____

¿Necesitas traductor de español? Sí _____ No _____

Si desea escuchar la reunión en español, los auriculares están disponibles en el área del Secretario de la Junta.

Las validaciones de estacionamiento están disponibles solo para oradores: consulte al Secretario de la Junta.

REGLAS DE LA JUNTA

Solicitudes para dirigirse a la Junta sobre temas de la "Agenda":

Puede solicitar ser escuchado sobre un tema publicado en la agenda. Las solicitudes de audiencia deben presentarse al Secretario de la Junta antes de la hora programada para la reunión.

Solicitudes para dirigirse a la Junta sobre temas que "NO" están en la Agenda:

Sin perjuicio de cualquier otra disposición de estas reglas, el miembro del público tendrá derecho a dirigirse a la Junta durante el segmento de media mañana "Comunicación verbal" de la agenda publicada. Dicho propósito de dirección deberá corresponder a temas que estén bajo la jurisdicción directa de la Junta de Supervisores. SU TIEMPO SERÁ LIMITADO A TRES (3) MINUTOS. La Junta Directiva puede limitar el tiempo del público sobre cualquier tema, según el número de personas que soliciten hablar y los asuntos de la junta.

Presentaciones de Power Point/Material Impreso:

Los oradores que tengan la intención de realizar una presentación formal de PowerPoint o proporcionar material impreso deben notificar a la Oficina del Secretario de la Junta antes de las 12 del mediodía del lunes previo a la reunión de la Junta del martes, asegurándose de que la Oficina del Secretario tenga suficientes copias de todos los materiales impresos y al menos una (1) copia del CD de PowerPoint. Se proporcionará a cada supervisor copias del material impreso entregado al secretario (antes de la fecha límite del lunes al mediodía). Si necesita utilizar el proyector "Elmo" en la reunión de la Junta, asegúrese de que su material sea claro y tenga el contraste adecuado, notificando al Secretario con suficiente antelación a la reunión su intención de utilizarlo. Se prohíbe a los oradores traer carteles a la sala de audiencias.

Límites de oradores individuales:

Los oradores individuales están limitados a un máximo de tres (3) minutos. La Junta Directiva puede limitar el tiempo del público sobre cualquier tema, según el número de personas que soliciten hablar y los asuntos de la junta. Suba al podio cuando el Presidente diga su nombre y comience a hablar de inmediato. Lleve el micrófono a su boca para que la junta directiva, la audiencia y el sistema de grabación de audio lo escuchen claramente. Una vez que comiences a hablar, se encenderá la luz "verde" del podio. La luz "amarilla" se encenderá cuando le quede un (1) minuto. Cuando le queden 30 segundos, la luz "amarilla" comenzará a parpadear, lo que indica que debe terminar rápidamente sus comentarios. Se acaba el tiempo cuando la luz "roja" parpadea. El Presidente respeta estrictamente un límite de tres (3) minutos por orador. ***Nota: Si tiene la intención de dedicar su tiempo a una "Presentación grupal /organizada", indíquelo claramente en la parte inferior del reverso de este formulario.***

Presentaciones Grupales/Organizadas:

Las presentaciones grupales/organizadas con más de un (1) orador se limitarán a nueve (9) minutos a discreción del Presidente. El organizador de la presentación recibirá automáticamente los primeros tres (3) minutos, y los seis (6) minutos restantes cedidos por otros oradores, según lo solicitaron en un formulario de "Solicitud para hablar" completado y claramente indicado en la parte inferior delantera de la forma.

Dirigiéndose a la Consejo y Reconocimiento por parte del Presidente:

El Presidente determinará el orden en que los oradores se dirigirán al Consejo, y convocará a todos los oradores en pares. El primer orador debe subir inmediatamente al podio y comenzar a dirigirse a la Junta. El segundo orador deberá ubicarse en uno de los pasillos de la cámara para poder subir rápidamente al podio después del orador anterior. Esto es para permitir una reunión de la Junta eficiente y oportuna, brindando a todos los asistentes la oportunidad de exponer sus argumentos. Los oradores tienen prohibido realizar ataques personales y/o utilizar lenguaje vulgar, grosero, o profano mientras hablan con los miembros de la Junta, el personal, el público en general y/o los participantes de la reunión. Tal comportamiento, a discreción del Presidente de la Junta, puede resultar en la expulsión de las Cámaras de la Junta por parte de los Agentes del Alguacil.

✓

**Riverside County Board of Supervisors
Request to Speak**

Submit request to the Clerk of the Board (right of podium), Speakers are entitled to three (3) minutes, subject to Board Rules listed on the reverse side of this form. The Board may limit the public input on any item, based on the number of people requesting to speak and the business of the Board.

SPEAKER'S NAME: Sharon Neill

Address: _____

City: Lake Elsinore Zip: _____

Phone #: _____

Date: 11/18/2025 Agenda # _____

PLEASE STATE YOUR POSITION BELOW:

Position on "Regular" (non-appealed) Agenda Item:

Public Comment

_____ Support _____ Oppose _____ Neutral

Note: If you are here for an agenda item that is filed for "Appeal", please state separately your position on the appeal below:

_____ Support _____ Oppose _____ Neutral

I give my 3 minutes to: _____

Parking validations available for speakers only – see Clerk of the Board.

(Revised: 04/23/2025)

BOARD RULES

Requests to Address Board on "Agenda" Items:

You may request to be heard on a published agenda item. Requests to be heard must be submitted to the Clerk of the Board before the scheduled meeting time.

Requests to Address Board on items that are "NOT" on the Agenda:

Notwithstanding any other provisions of these rules, member of the public shall have the right to address the Board during the mid-morning "Oral Communications" segment of the published agenda. Said purpose for address must pertain to issues which are under the direct jurisdiction of the Board of Supervisors. YOUR TIME WILL BE LIMITED TO THREE (3) MINUTES. The Board may limit the public input on any item, based on the number of people requesting to speak and the business of the Board.

Power Point Presentations/Printed Material:

Speakers who intend to conduct a formalized Power Point presentation or provide printed material must notify the Clerk of the Board's Office by 12 noon on the Monday preceding the Tuesday Board meeting, ensuring that the Clerk's Office has sufficient copies of all printed materials and at least one (1) copy of the Power Point CD. Copies of printed material given to the Clerk (by Monday noon deadline) will be provided to each Supervisor. If you have the need to use the overhead "Elmo" projector at the Board meeting, please ensure your material is clear and with proper contrast, notifying the Clerk well ahead of the meeting, of your intent to use the Elmo. **Speakers are prohibited from bringing signs, placards, or posters into the hearing room.**

Individual Speaker Limits:

Individual speakers are limited to a maximum of three (3) minutes. The Board may limit the public input on any item, based on the number of people requesting to speak and the business of the Board. Please step up to the podium when the Chair calls your name and begin speaking immediately. Pull the microphone to your mouth so that the Board, audience, and audio recording system hear you clearly. Once you start speaking, the "green" podium light will light. The "yellow" light will come on when you have one (1) minute remaining. When you have 30 seconds remaining, the "yellow" light will begin flash, indicating you must quickly wrap up your comments. Your time is up when the "red" light flashes. The Chair adheres to a strict three (3) minutes per speaker. ***Note: If you intend to give your time to a "Group/Organized Presentation", please state so clearly at the very bottom of the reverse side of this form.***

Group/Organized Presentations:

Group/organized presentations with more than one (1) speaker will be limited to nine (9) minutes at the Chair's discretion. The organizer of the presentation will automatically receive the first three (3) minutes, with the remaining six (6) minutes relinquished by other speakers, as requested by them on a completed "Request to Speak" form, and clearly indicated at the front bottom of the form.

Addressing the Board & Acknowledgement by Chair:

The Chair will determine what order the speakers will address the Board and will call on all speakers in pairs. The first speaker should immediately step to the podium and begin addressing the Board. The second speaker should take up a position in one of the chamber aisles to quickly step up to the podium after the preceding speaker. This is to afford an efficient and timely Board meeting, giving all attendees the opportunity to make their case. Speakers are prohibited from making personal attacks, and/or using coarse, crude, profane or vulgar language while speaking to the Board members, staff, the public and/or meeting participants. Such behavior, at the discretion of the Board Chair may result in removal from the Board Chambers by Sheriff Deputies.



Riverside County Board of Supervisors
Request to Speak

Submit request to the Clerk of the Board (right of podium), Speakers are entitled to three (3) minutes, subject to Board Rules listed on the reverse side of this form. The Board may limit the public input on any item, based on the number of people requesting to speak and the business of the Board.

SPEAKER'S NAME: Cyndie Allen

Address: _____

City: Temecula Zip: _____

Phone #: _____

Date: 11/18/2025 Agenda # Public Comment

PLEASE STATE YOUR POSITION BELOW:

Position on "Regular" (non-appealed) Agenda Item:

_____ Support _____ Oppose _____ Neutral

Note: If you are here for an agenda item that is filed for "Appeal", please state separately your position on the appeal below:

_____ Support _____ Oppose _____ Neutral

I give my 3 minutes to: _____

Parking validations available for speakers only – see Clerk of the Board.

(Revised: 04/23/2025)

BOARD RULES

Requests to Address Board on "Agenda" Items:

You may request to be heard on a published agenda item. Requests to be heard must be submitted to the Clerk of the Board before the scheduled meeting time.

Requests to Address Board on items that are "NOT" on the Agenda:

Notwithstanding any other provisions of these rules, member of the public shall have the right to address the Board during the mid-morning "Oral Communications" segment of the published agenda. Said purpose for address must pertain to issues which are under the direct jurisdiction of the Board of Supervisors. YOUR TIME WILL BE LIMITED TO THREE (3) MINUTES. The Board may limit the public input on any item, based on the number of people requesting to speak and the business of the Board.

Power Point Presentations/Printed Material:

Speakers who intend to conduct a formalized Power Point presentation or provide printed material must notify the Clerk of the Board's Office by 12 noon on the Monday preceding the Tuesday Board meeting, ensuring that the Clerk's Office has sufficient copies of all printed materials and at least one (1) copy of the Power Point CD. Copies of printed material given to the Clerk (by Monday noon deadline) will be provided to each Supervisor. If you have the need to use the overhead "Elmo" projector at the Board meeting, please ensure your material is clear and with proper contrast, notifying the Clerk well ahead of the meeting, of your intent to use the Elmo. **Speakers are prohibited from bringing signs, placards, or posters into the hearing room.**

Individual Speaker Limits:

Individual speakers are limited to a maximum of three (3) minutes. The Board may limit the public input on any item, based on the number of people requesting to speak and the business of the Board. Please step up to the podium when the Chair calls your name and begin speaking immediately. Pull the microphone to your mouth so that the Board, audience, and audio recording system hear you clearly. Once you start speaking, the "green" podium light will light. The "yellow" light will come on when you have one (1) minute remaining. When you have 30 seconds remaining, the "yellow" light will begin flash, indicating you must quickly wrap up your comments. Your time is up when the "red" light flashes. The Chair adheres to a strict three (3) minutes per speaker. ***Note: If you intend to give your time to a "Group/Organized Presentation", please state so clearly at the very bottom of the reverse side of this form.***

Group/Organized Presentations:

Group/organized presentations with more than one (1) speaker will be limited to nine (9) minutes at the Chair's discretion. The organizer of the presentation will automatically receive the first three (3) minutes, with the remaining six (6) minutes relinquished by other speakers, as requested by them on a completed "Request to Speak" form, and clearly indicated at the front bottom of the form.

Addressing the Board & Acknowledgement by Chair:

The Chair will determine what order the speakers will address the Board and will call on all speakers in pairs. The first speaker should immediately step to the podium and begin addressing the Board. The second speaker should take up a position in one of the chamber aisles to quickly step up to the podium after the preceding speaker. This is to afford an efficient and timely Board meeting, giving all attendees the opportunity to make their case. Speakers are prohibited from making personal attacks, and/or using coarse, crude, profane or vulgar language while speaking to the Board members, staff, the public and/or meeting participants. Such behavior, at the discretion of the Board Chair may result in removal from the Board Chambers by Sheriff Deputies.



Riverside County Board of Supervisors
Request to Speak

Submit request to the Clerk of the Board (right of podium), Speakers are entitled to three (3) minutes, subject to Board Rules listed on the reverse side of this form. The Board may limit the public input on any item, based on the number of people requesting to speak and the business of the Board.

SPEAKER'S NAME: Shari Franklin

Address: _____

City: Temecula Zip: _____

Phone #: _____

Date: 11/18/2025 Agenda # Public Comment

PLEASE STATE YOUR POSITION BELOW:

Position on "Regular" (non-appealed) Agenda Item:

_____ Support _____ Oppose _____ Neutral

Note: If you are here for an agenda item that is filed for "Appeal", please state separately your position on the appeal below:

_____ Support _____ Oppose _____ Neutral

I give my 3 minutes to: _____

Parking validations available for speakers only – see Clerk of the Board.

(Revised: 04/23/2025)

BOARD RULES

Requests to Address Board on "Agenda" Items:

You may request to be heard on a published agenda item. Requests to be heard must be submitted to the Clerk of the Board before the scheduled meeting time.

Requests to Address Board on items that are "NOT" on the Agenda:

Notwithstanding any other provisions of these rules, member of the public shall have the right to address the Board during the mid-morning "Oral Communications" segment of the published agenda. Said purpose for address must pertain to issues which are under the direct jurisdiction of the Board of Supervisors. **YOUR TIME WILL BE LIMITED TO THREE (3) MINUTES.** The Board may limit the public input on any item, based on the number of people requesting to speak and the business of the Board.

Power Point Presentations/Printed Material:

Speakers who intend to conduct a formalized Power Point presentation or provide printed material must notify the Clerk of the Board's Office by 12 noon on the Monday preceding the Tuesday Board meeting, ensuring that the Clerk's Office has sufficient copies of all printed materials and at least one (1) copy of the Power Point CD. Copies of printed material given to the Clerk (by Monday noon deadline) will be provided to each Supervisor. If you have the need to use the overhead "Elmo" projector at the Board meeting, please ensure your material is clear and with proper contrast, notifying the Clerk well ahead of the meeting, of your intent to use the Elmo. **Speakers are prohibited from bringing signs, placards, or posters into the hearing room.**

Individual Speaker Limits:

Individual speakers are limited to a maximum of three (3) minutes. The Board may limit the public input on any item, based on the number of people requesting to speak and the business of the Board. Please step up to the podium when the Chair calls your name and begin speaking immediately. Pull the microphone to your mouth so that the Board, audience, and audio recording system hear you clearly. Once you start speaking, the "green" podium light will light. The "yellow" light will come on when you have one (1) minute remaining. When you have 30 seconds remaining, the "yellow" light will begin flash, indicating you must quickly wrap up your comments. Your time is up when the "red" light flashes. The Chair adheres to a strict three (3) minutes per speaker. ***Note: If you intend to give your time to a "Group/Organized Presentation", please state so clearly at the very bottom of the reverse side of this form.***

Group/Organized Presentations:

Group/organized presentations with more than one (1) speaker will be limited to nine (9) minutes at the Chair's discretion. The organizer of the presentation will automatically receive the first three (3) minutes, with the remaining six (6) minutes relinquished by other speakers, as requested by them on a completed "Request to Speak" form, and clearly indicated at the front bottom of the form.

Addressing the Board & Acknowledgement by Chair:

The Chair will determine what order the speakers will address the Board and will call on all speakers in pairs. The first speaker should immediately step to the podium and begin addressing the Board. The second speaker should take up a position in one of the chamber aisles to quickly step up to the podium after the preceding speaker. This is to afford an efficient and timely Board meeting, giving all attendees the opportunity to make their case. Speakers are prohibited from making personal attacks, and/or using coarse, crude, profane or vulgar language while speaking to the Board members, staff, the public and/or meeting participants. Such behavior, at the discretion of the Board Chair may result in removal from the Board Chambers by Sheriff Deputies.

✓

**Riverside County Board of Supervisors
Request to Speak**

Submit request to the Clerk of the Board (right of podium), Speakers are entitled to three (3) minutes, subject to Board Rules listed on the reverse side of this form. The Board may limit the public input on any item, based on the number of people requesting to speak and the business of the Board.

SPEAKER'S NAME: José Manuel Regueiro

Address: _____

City: Murrieta Zip: 92562

Phone #: 951-440-5822

Date: 11-18-2025 Agenda # Public Comment

PLEASE STATE YOUR POSITION BELOW:

Position on "Regular" (non-appealed) Agenda Item:

_____ Support _____ Oppose _____ Neutral

Note: If you are here for an agenda item that is filed for "Appeal", please state separately your position on the appeal below:

_____ Support _____ Oppose _____ Neutral

I give my 3 minutes to: _____

Parking validations available for speakers only – see Clerk of the Board.

(Revised: 04/23/2025)

BOARD RULES

Requests to Address Board on "Agenda" Items:

You may request to be heard on a published agenda item. Requests to be heard must be submitted to the Clerk of the Board before the scheduled meeting time.

Requests to Address Board on items that are "NOT" on the Agenda:

Notwithstanding any other provisions of these rules, member of the public shall have the right to address the Board during the mid-morning "Oral Communications" segment of the published agenda. Said purpose for address must pertain to issues which are under the direct jurisdiction of the Board of Supervisors. **YOUR TIME WILL BE LIMITED TO THREE (3) MINUTES.** The Board may limit the public input on any item, based on the number of people requesting to speak and the business of the Board.

Power Point Presentations/Printed Material:

Speakers who intend to conduct a formalized Power Point presentation or provide printed material must notify the Clerk of the Board's Office by 12 noon on the Monday preceding the Tuesday Board meeting, ensuring that the Clerk's Office has sufficient copies of all printed materials and at least one (1) copy of the Power Point CD. Copies of printed material given to the Clerk (by Monday noon deadline) will be provided to each Supervisor. If you have the need to use the overhead "Elmo" projector at the Board meeting, please ensure your material is clear and with proper contrast, notifying the Clerk well ahead of the meeting, of your intent to use the Elmo. **Speakers are prohibited from bringing signs, placards, or posters into the hearing room.**

Individual Speaker Limits:

Individual speakers are limited to a maximum of three (3) minutes. The Board may limit the public input on any item, based on the number of people requesting to speak and the business of the Board. Please step up to the podium when the Chair calls your name and begin speaking immediately. Pull the microphone to your mouth so that the Board, audience, and audio recording system hear you clearly. Once you start speaking, the "green" podium light will light. The "yellow" light will come on when you have one (1) minute remaining. When you have 30 seconds remaining, the "yellow" light will begin flash, indicating you must quickly wrap up your comments. Your time is up when the "red" light flashes. The Chair adheres to a strict three (3) minutes per speaker. ***Note: If you intend to give your time to a "Group/Organized Presentation", please state so clearly at the very bottom of the reverse side of this form.***

Group/Organized Presentations:

Group/organized presentations with more than one (1) speaker will be limited to nine (9) minutes at the Chair's discretion. The organizer of the presentation will automatically receive the first three (3) minutes, with the remaining six (6) minutes relinquished by other speakers, as requested by them on a completed "Request to Speak" form, and clearly indicated at the front bottom of the form.

Addressing the Board & Acknowledgement by Chair:

The Chair will determine what order the speakers will address the Board and will call on all speakers in pairs. The first speaker should immediately step to the podium and begin addressing the Board. The second speaker should take up a position in one of the chamber aisles to quickly step up to the podium after the preceding speaker. This is to afford an efficient and timely Board meeting, giving all attendees the opportunity to make their case. Speakers are prohibited from making personal attacks, and/or using coarse, crude, profane or vulgar language while speaking to the Board members, staff, the public and/or meeting participants. Such behavior, at the discretion of the Board Chair may result in removal from the Board Chambers by Sheriff Deputies.

MINUTES OF THE BOARD OF SUPERVISORS
COUNTY OF RIVERSIDE, STATE OF CALIFORNIA



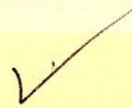
PUBLIC COMMENT:

24.3

During the oral communication section of the agenda for Tuesday, November 18, 2025, Jenniffer Quinn spoke regarding the TLC Removal Services Agreement with Animal Services.

**ATTACHMENTS FILED WITH
CLERK OF THE BOARD**

**AGENDA NO.
24.3**



Riverside County Board of Supervisors
Request to Speak

Submit request to the Clerk of the Board (right of podium), Speakers are entitled to three (3) minutes, subject to Board Rules listed on the reverse side of this form. The Board may limit the public input on any item, based on the number of people requesting to speak and the business of the Board.

SPEAKER'S NAME: Jennifer Quinn

Address: _____

City: Murro Zip: 92567

Phone #: 951-318-4907

Date: 11-18-2025 Agenda # public comment

PLEASE STATE YOUR POSITION BELOW:

Position on "Regular" (non-appealed) Agenda Item:

_____ Support _____ Oppose _____ Neutral

Note: If you are here for an agenda item that is filed for "Appeal", please state separately your position on the appeal below:

_____ Support _____ Oppose _____ Neutral

I give my 3 minutes to: _____

Parking validations available for speakers only – see Clerk of the Board.

(Revised: 04/23/2025)

BOARD RULES

Requests to Address Board on "Agenda" Items:

You may request to be heard on a published agenda item. Requests to be heard must be submitted to the Clerk of the Board before the scheduled meeting time.

Requests to Address Board on items that are "NOT" on the Agenda:

Notwithstanding any other provisions of these rules, member of the public shall have the right to address the Board during the mid-morning "Oral Communications" segment of the published agenda. Said purpose for address must pertain to issues which are under the direct jurisdiction of the Board of Supervisors. YOUR TIME WILL BE LIMITED TO THREE (3) MINUTES. The Board may limit the public input on any item, based on the number of people requesting to speak and the business of the Board.

Power Point Presentations/Printed Material:

Speakers who intend to conduct a formalized Power Point presentation or provide printed material must notify the Clerk of the Board's Office by 12 noon on the Monday preceding the Tuesday Board meeting, ensuring that the Clerk's Office has sufficient copies of all printed materials and at least one (1) copy of the Power Point CD. Copies of printed material given to the Clerk (by Monday noon deadline) will be provided to each Supervisor. If you have the need to use the overhead "Elmo" projector at the Board meeting, please ensure your material is clear and with proper contrast, notifying the Clerk well ahead of the meeting, of your intent to use the Elmo. **Speakers are prohibited from bringing signs, placards, or posters into the hearing room.**

Individual Speaker Limits:

Individual speakers are limited to a maximum of three (3) minutes. The Board may limit the public input on any item, based on the number of people requesting to speak and the business of the Board. Please step up to the podium when the Chair calls your name and begin speaking immediately. Pull the microphone to your mouth so that the Board, audience, and audio recording system hear you clearly. Once you start speaking, the "green" podium light will light. The "yellow" light will come on when you have one (1) minute remaining. When you have 30 seconds remaining, the "yellow" light will begin flash, indicating you must quickly wrap up your comments. Your time is up when the "red" light flashes. The Chair adheres to a strict three (3) minutes per speaker. **Note: If you intend to give your time to a "Group/Organized Presentation", please state so clearly at the very bottom of the reverse side of this form.**

Group/Organized Presentations:

Group/organized presentations with more than one (1) speaker will be limited to nine (9) minutes at the Chair's discretion. The organizer of the presentation will automatically receive the first three (3) minutes, with the remaining six (6) minutes relinquished by other speakers, as requested by them on a completed "Request to Speak" form, and clearly indicated at the front bottom of the form.

Addressing the Board & Acknowledgement by Chair:

The Chair will determine what order the speakers will address the Board and will call on all speakers in pairs. The first speaker should immediately step to the podium and begin addressing the Board. The second speaker should take up a position in one of the chamber aisles to quickly step up to the podium after the preceding speaker. This is to afford an efficient and timely Board meeting, giving all attendees the opportunity to make their case. Speakers are prohibited from making personal attacks, and/or using coarse, crude, profane or vulgar language while speaking to the Board members, staff, the public and/or meeting participants. Such behavior, at the discretion of the Board Chair may result in removal from the Board Chambers by Sheriff Deputies.

MINUTES OF THE BOARD OF SUPERVISORS
COUNTY OF RIVERSIDE, STATE OF CALIFORNIA



PUBLIC COMMENT:

24.4

During the oral communication section of the agenda for Tuesday, November 18, 2025, Jacob Russo spoke regarding flooding issues on his property in Lake Elsinore.

**ATTACHMENTS FILED WITH
CLERK OF THE BOARD**

**AGENDA NO.
24.4**

BOARD RULES

Requests to Address Board on "Agenda" Items:

You may request to be heard on a published agenda item. Requests to be heard must be submitted to the Clerk of the Board before the scheduled meeting time.

Requests to Address Board on items that are "NOT" on the Agenda:

Notwithstanding any other provisions of these rules, member of the public shall have the right to address the Board during the mid-morning "Oral Communications" segment of the published agenda. Said purpose for address must pertain to issues which are under the direct jurisdiction of the Board of Supervisors. **YOUR TIME WILL BE LIMITED TO THREE (3) MINUTES.** The Board may limit the public input on any item, based on the number of people requesting to speak and the business of the Board.

Power Point Presentations/Printed Material:

Speakers who intend to conduct a formalized Power Point presentation or provide printed material must notify the Clerk of the Board's Office by 12 noon on the Monday preceding the Tuesday Board meeting, ensuring that the Clerk's Office has sufficient copies of all printed materials and at least one (1) copy of the Power Point CD. Copies of printed material given to the Clerk (by Monday noon deadline) will be provided to each Supervisor. If you have the need to use the overhead "Elmo" projector at the Board meeting, please ensure your material is clear and with proper contrast, notifying the Clerk well ahead of the meeting, of your intent to use the Elmo. **Speakers are prohibited from bringing signs, placards, or posters into the hearing room.**

Individual Speaker Limits:

Individual speakers are limited to a maximum of three (3) minutes. The Board may limit the public input on any item, based on the number of people requesting to speak and the business of the Board. Please step up to the podium when the Chair calls your name and begin speaking immediately. Pull the microphone to your mouth so that the Board, audience, and audio recording system hear you clearly. Once you start speaking, the "green" podium light will light. The "yellow" light will come on when you have one (1) minute remaining. When you have 30 seconds remaining, the "yellow" light will begin flash, indicating you must quickly wrap up your comments. Your time is up when the "red" light flashes. The Chair adheres to a strict three (3) minutes per speaker. ***Note: If you intend to give your time to a "Group/Organized Presentation", please state so clearly at the very bottom of the reverse side of this form.***

Group/Organized Presentations:

Group/organized presentations with more than one (1) speaker will be limited to nine (9) minutes at the Chair's discretion. The organizer of the presentation will automatically receive the first three (3) minutes, with the remaining six (6) minutes relinquished by other speakers, as requested by them on a completed "Request to Speak" form, and clearly indicated at the front bottom of the form.

Addressing the Board & Acknowledgement by Chair:

The Chair will determine what order the speakers will address the Board and will call on all speakers in pairs. The first speaker should immediately step to the podium and begin addressing the Board. The second speaker should take up a position in one of the chamber aisles to quickly step up to the podium after the preceding speaker. This is to afford an efficient and timely Board meeting, giving all attendees the opportunity to make their case. Speakers are prohibited from making personal attacks, and/or using coarse, crude, profane or vulgar language while speaking to the Board members, staff, the public and/or meeting participants. Such behavior, at the discretion of the Board Chair may result in removal from the Board Chambers by Sheriff Deputies.

MINUTES OF THE BOARD OF SUPERVISORS
COUNTY OF RIVERSIDE, STATE OF CALIFORNIA



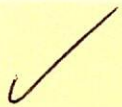
PUBLIC COMMENT:

24.5

During the oral communication section of the agenda for Tuesday, November 18, 2025, Roy Bleckert spoke regarding translator interpretation during Board Meetings and government mismanagement.

**ATTACHMENTS FILED WITH
CLERK OF THE BOARD**

**AGENDA NO.
24.5**



Riverside County Board of Supervisors
Request to Speak

Submit request to the Clerk of the Board (right of podium), Speakers are entitled to three (3) minutes, subject to Board Rules listed on the reverse side of this form. The Board may limit the public input on any item, based on the number of people requesting to speak and the business of the Board.

SPEAKER'S NAME: Roy Blackmore

Address: _____

City: _____ Zip: _____

Phone #: _____

Date: _____ Agenda # PUBLIC

PLEASE STATE YOUR POSITION BELOW:

County

Position on "Regular" (non-appealed) Agenda Item:

_____ Support _____ Oppose _____ Neutral

Note: If you are here for an agenda item that is filed for "Appeal", please state separately your position on the appeal below:

_____ Support _____ Oppose _____ Neutral

I give my 3 minutes to: _____

Parking validations available for speakers only – see Clerk of the Board.

(Revised: 04/23/2025)

BOARD RULES

Requests to Address Board on "Agenda" Items:

You may request to be heard on a published agenda item. Requests to be heard must be submitted to the Clerk of the Board before the scheduled meeting time.

Requests to Address Board on items that are "NOT" on the Agenda:

Notwithstanding any other provisions of these rules, member of the public shall have the right to address the Board during the mid-morning "Oral Communications" segment of the published agenda. Said purpose for address must pertain to issues which are under the direct jurisdiction of the Board of Supervisors. YOUR TIME WILL BE LIMITED TO THREE (3) MINUTES. The Board may limit the public input on any item, based on the number of people requesting to speak and the business of the Board.

Power Point Presentations/Printed Material:

Speakers who intend to conduct a formalized Power Point presentation or provide printed material must notify the Clerk of the Board's Office by 12 noon on the Monday preceding the Tuesday Board meeting, ensuring that the Clerk's Office has sufficient copies of all printed materials and at least one (1) copy of the Power Point CD. Copies of printed material given to the Clerk (by Monday noon deadline) will be provided to each Supervisor. If you have the need to use the overhead "Elmo" projector at the Board meeting, please ensure your material is clear and with proper contrast, notifying the Clerk well ahead of the meeting, of your intent to use the Elmo. **Speakers are prohibited from bringing signs, placards, or posters into the hearing room.**

Individual Speaker Limits:

Individual speakers are limited to a maximum of three (3) minutes. The Board may limit the public input on any item, based on the number of people requesting to speak and the business of the Board. Please step up to the podium when the Chair calls your name and begin speaking immediately. Pull the microphone to your mouth so that the Board, audience, and audio recording system hear you clearly. Once you start speaking, the "green" podium light will light. The "yellow" light will come on when you have one (1) minute remaining. When you have 30 seconds remaining, the "yellow" light will begin flash, indicating you must quickly wrap up your comments. Your time is up when the "red" light flashes. The Chair adheres to a strict three (3) minutes per speaker. ***Note: If you intend to give your time to a "Group/Organized Presentation", please state so clearly at the very bottom of the reverse side of this form.***

Group/Organized Presentations:

Group/organized presentations with more than one (1) speaker will be limited to nine (9) minutes at the Chair's discretion. The organizer of the presentation will automatically receive the first three (3) minutes, with the remaining six (6) minutes relinquished by other speakers, as requested by them on a completed "Request to Speak" form, and clearly indicated at the front bottom of the form.

Addressing the Board & Acknowledgement by Chair:

The Chair will determine what order the speakers will address the Board and will call on all speakers in pairs. The first speaker should immediately step to the podium and begin addressing the Board. The second speaker should take up a position in one of the chamber aisles to quickly step up to the podium after the preceding speaker. This is to afford an efficient and timely Board meeting, giving all attendees the opportunity to make their case. Speakers are prohibited from making personal attacks, and/or using coarse, crude, profane or vulgar language while speaking to the Board members, staff, the public and/or meeting participants. Such behavior, at the discretion of the Board Chair may result in removal from the Board Chambers by Sheriff Deputies.

Flores, Kate

From: Tonya Guillen <tonyafguillen@gmail.com>
Sent: Tuesday, November 18, 2025 9:32 AM
To: Clerk of the Board
Cc: Lantz, Paul
Subject: Board of Supervisors Meeting 11/18 - Slide Submission
Attachments: Nuevo Jobs-3.pptx

Good morning,

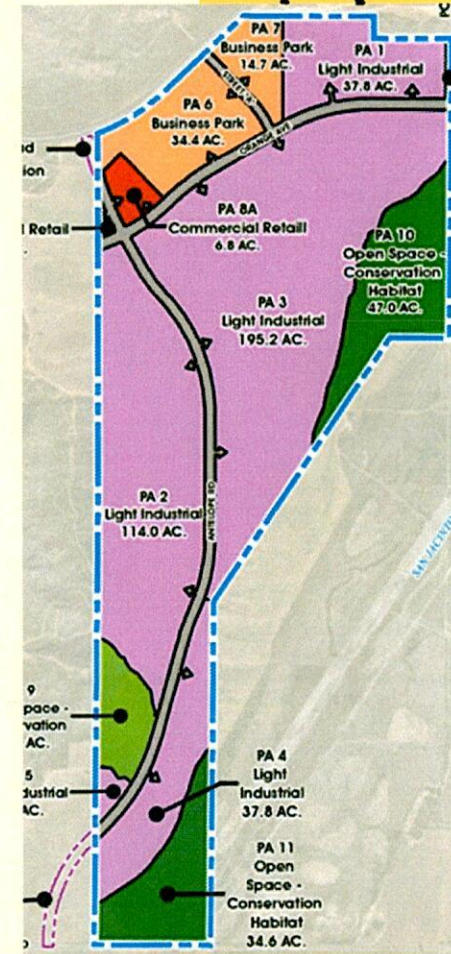
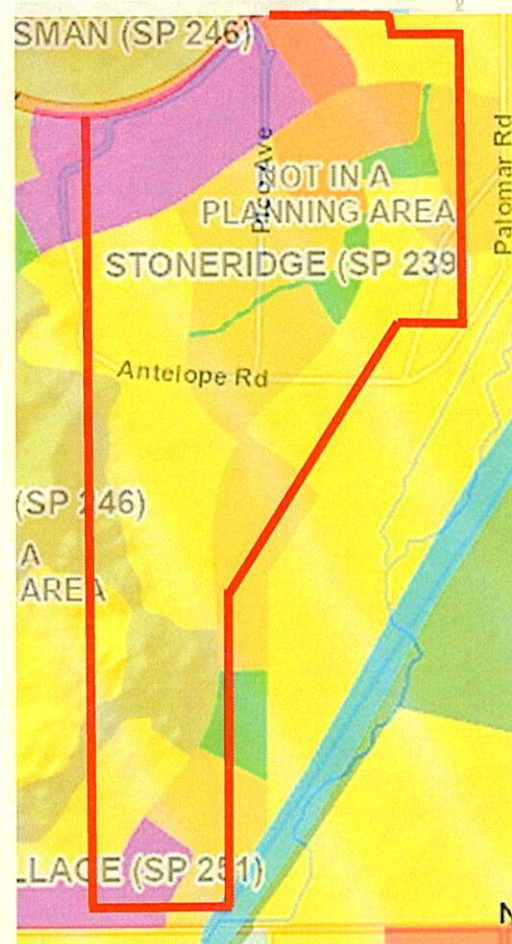
I will be attending the Board of Supervisors meeting today. Please see attached my slide that I would like displayed upon my request to speak.

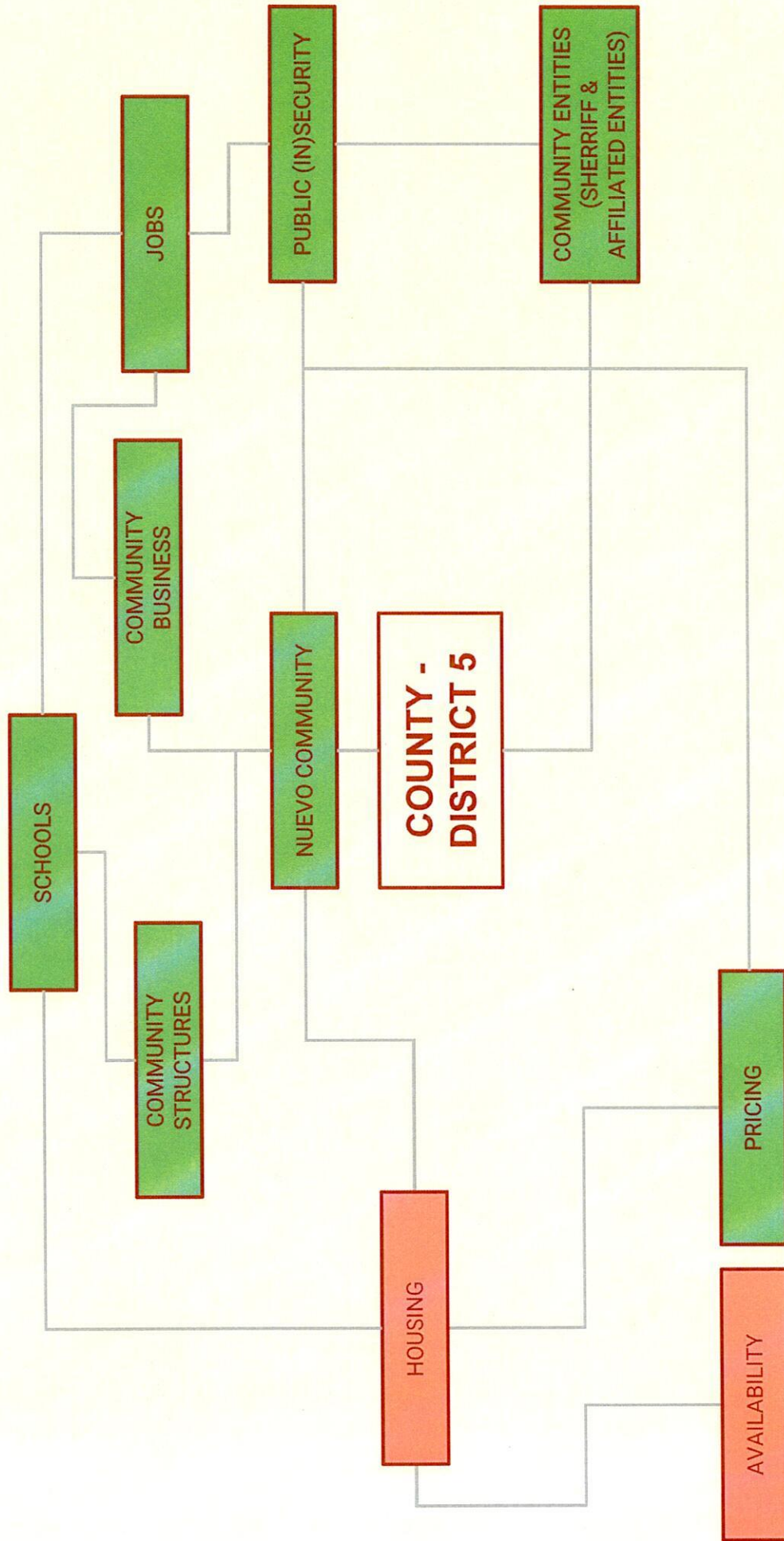
Date: 11/18/2025
Agenda Item: Public Comment
Name: Tonya Gonzalez

Thank you,
Tonya Gonzalez

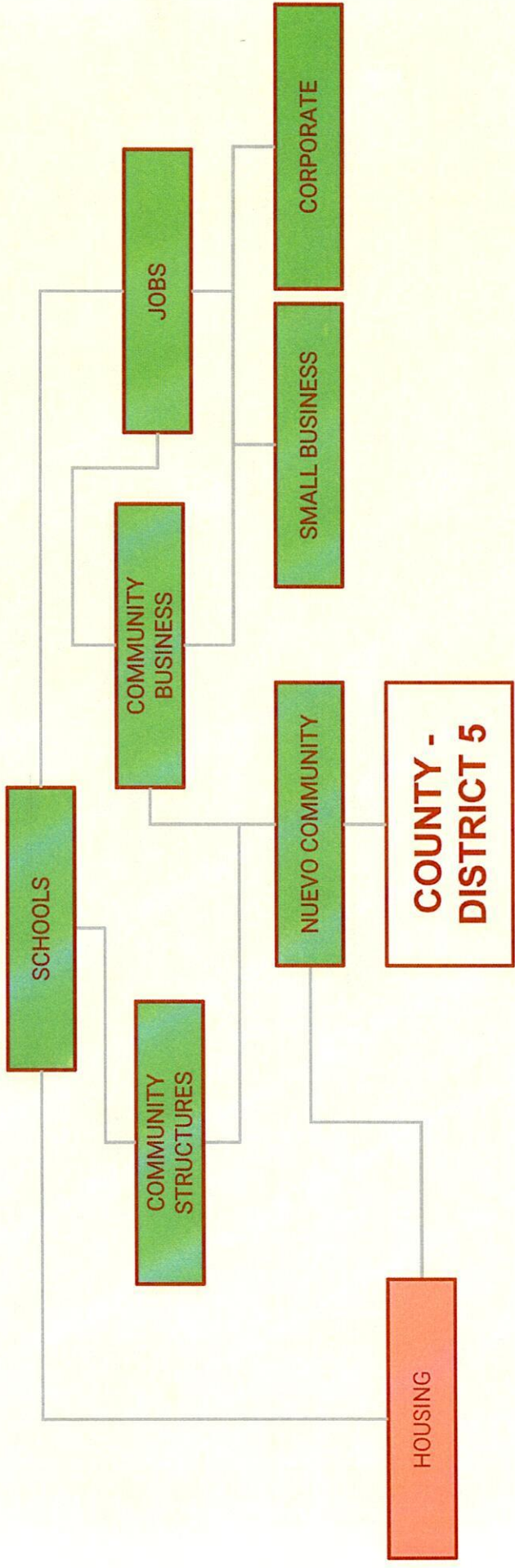
Save a Nuevo Neighborhood

Help the community of Nuevo build the community that was set to be built since the 1900's while at the same time salvaging human development area that's not located in a threatened area by today's natural disasters.





Community



Community

THE STATE OF THE REGION

THE INLAND EMPIRE 2024

by

Manfred Keil, Robert Kleinhenz, Fernando Lozano¹

TABLE 1: COMMUTERS, INLAND EMPIRE, 2023

Destination	Riverside County	San Bernardino County
To LA	53,000	132,000
To San Diego	47,000	3,000
To Orange County	75,000	38,000
Total Coastal	175,000	173,000
SBC/RIC	113,000	78,000
Total	288,000	251,000
<i>Share of Total Employment</i>	<i>30%</i>	<i>23%</i>

Source: <https://www.cmc.edu/sites/default/files/SOTR%202024%20Final%20Draft.pdf>

Jobs - County

Jobs - County

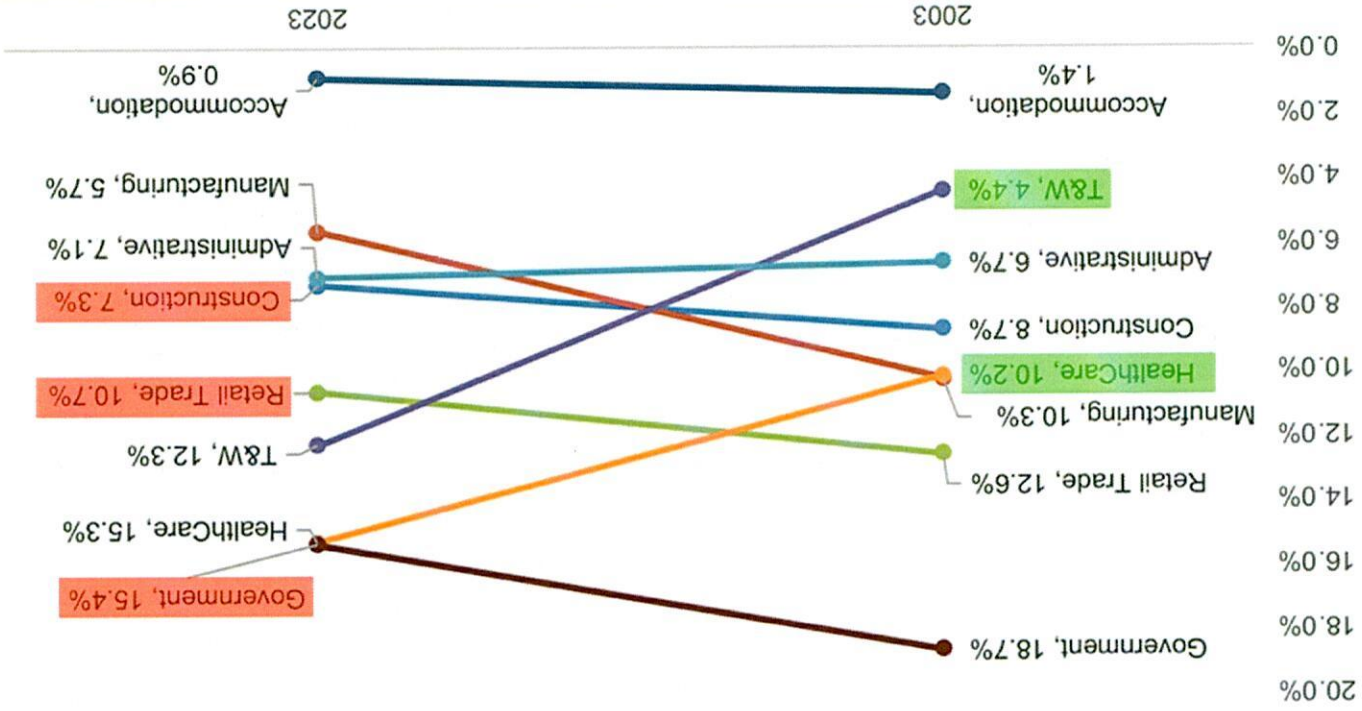


FIGURE 2: EMPLOYMENT SHARES, INDUSTRIAL SECTORS INLAND EMPIRE, 2003 AND 2023, CES

FIGURE 16: WAGES BY OCCUPATION, INLAND EMPIRE, 25TH TO 75TH PERCENTILE, 2023 QUARTER 1



Jobs - County

The figure also contains the reason for the 400,000 or so daily commutes from the Inland Empire into the Coastal Regions: commuters are simply not willing to work for the relatively low wages offered by many of the industries in the region. Note that no one in their right mind enjoys commutes that last as long as 4 hours on a round trip per day (Upland to Downtown on a Thursday; the 37 mile distance takes 4.5 hours to cover if you leave at 7:00 a.m. and return at 5:00 p.m.). These individuals would rather just have a job in Ontario, Riverside, Covina, or Fontana. Unfortunately their human capital endowment allows them to make considerably more money, on average, than the jobs that are available to them in the Inland Empire - hence the commute.

Logistics is, no doubt, important to the region. However, if you want to attract industries that produce more value-added products, and thereby lift per capita GDP perhaps to levels that we observe in the Phoenix MSA (ranked about 190), then you have to find ways to increase the average human capital level of its workers. Firms that are higher value added-producing otherwise simply will not come. Note that the percent of residents holding at least a Bachelor's degree is 35% in the Phoenix area. Bottom line, if your labor force has half of its workers who have never attended a college class, then firms will not settle here. **If you don't build it, they will not come.**

Jobs - County

THE INLAND EMPIRE IN 2045

The Wall Street Journal ran an article on February 17 (recently) under the following title:

“62% of Americans Lack a College Degree. Can They Solve the Labor Shortage?”

The article mentioned that some large firms such as IBM, Delta, Google, Walmart, GM etc. no longer require a college degree for some of their better paying jobs. In doing so, these companies were hoping to cope better with the labor shortage observed in the nation.

Had this article been written about the Inland Empire, the headline would have been as follows:

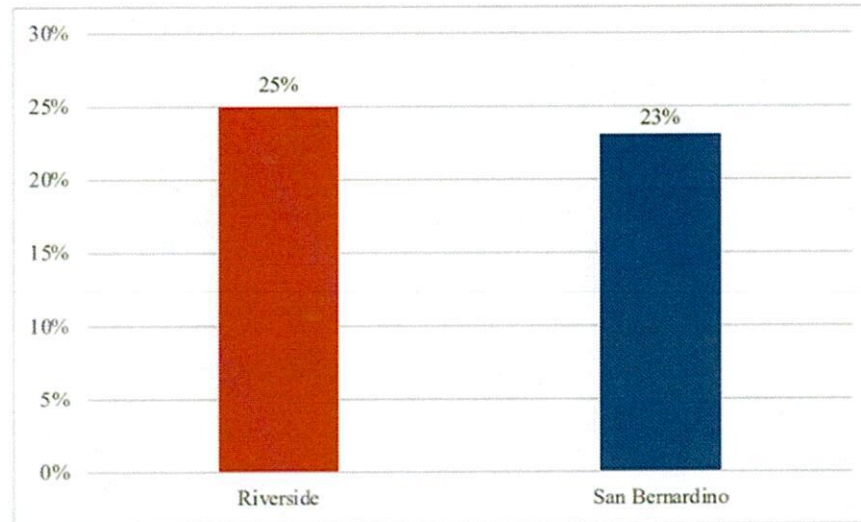
“78% of Inland Empire Residents Lack a College Degree. Can They Solve the Labor Shortage?”

To make matters more serious, the Inland Empire number includes commuters, and while we do not have the exact figures, it is fair to assume that a higher percentage of commuters has a college degree. They are more qualified to take on jobs that require more skills than those who work and reside in the Inland Empire. This is, after all, the reason for their commute: while they could take on a job in the Inland Empire, which would avoid long commutes, they choose not to do so because the coastal area jobs are better paying. To qualify for these coastal jobs, you need more human capital.

Figure 15 shows the percent of Prime-Age Workers with at least a bachelor's degree in Riverside County and San Bernardino County.

Jobs - County

FIGURE 15: PERCENT OF PRIME-AGE WORKERS WITH AT LEAST A BACHELOR'S DEGREE BY RACE, RIVERSIDE COUNTY AND SAN BERNARDINO COUNTY



The lack of qualified workers plays directly into our outlook for the Inland Empire in 20 years or so. Even without considering the results of increased pollution, automation, and energy-use in the area, which we will address in a moment, there are other concerns regarding the weight

logistics has received in terms of attention by local politicians.

First there is the idea that the **logistics industry does not generate much value added** in terms of its output and income.

Jobs - County

RIVERSIDE COUNTY MAIN INDUSTRIES
FOR JOBS 10%>

- RETAIL/COMMERCIAL
- HEALTH & SOCIAL
- TRANSPORTATION & WAREHOUSE

RIVERSIDE COUNTY MISSING
INDUSTRIES FOR JOBS >1% *

- ACCOMMODATION
- LEGAL
- ARCHITECTURE & ENGINEERING

*DATA GATHERED FROM U.S. BUREAU OF LABOR STATISTICS
News Release Information: 25-498-SAN Thursday, May 01, 2025

RIVERSIDE COUNTY
ECONOMIC DEVELOPMENT
STRATEGIC PLAN

MISSING INDUSTRIES TRAVELING
COMMUTERS

30% OF RIVERSIDE COUNTY
COMMUTES OUT OF COUNTY

- INCREASE IN TRAFFIC / ACCIDENTS / POLLUTION / DETERIORATION OF ROADS

**Vestibulum nec
congue tempus**

Jobs - County

Targeted Industry Performance (Riverside County)

Riverside County's clear strength in transportation and logistics provides an opportunity for utilizing local innovation to transform the future of this industry. Likewise, the opportunities in other industries provides opportunity for increased economic diversification. Full target industry analysis available in appendix G.

Strengths:

- Transportation & Logistics: 75,305 jobs; LQ 2.14.
- Hospitality & Tourism: 4,500+ establishments; LQ 1.18.

Opportunities:

- Advanced Manufacturing: Weak presence in aerospace, semiconductors, and medical devices relative to peer counties.
- AgTech: Low employment and establishment LQs in most components of this cluster.
- Biotech: Low employment and establishment LQs in most components of this cluster.
- Clean Energy: Low employment and establishment LQs.
- Cybersecurity & Media Production: Minimal presence; LQs near zero.

Riverside County is on a strong upward trajectory, consistently outperforming peer regions in job creation and business formation. To evolve from a fast follower into a regional leader, the County must address key structural challenges, particularly in workforce readiness and industry diversification. With strategic investments in education, infrastructure, and targeted sector development, Riverside County is well-positioned to become an innovation-driven economy over the next decade, setting a new benchmark for growth and adaptability across the Western U.S. and outperforming peer communities.

An LQ of 1.0 indicates that an industry's concentration (percentage of total jobs) in a local area is the same as the national average.

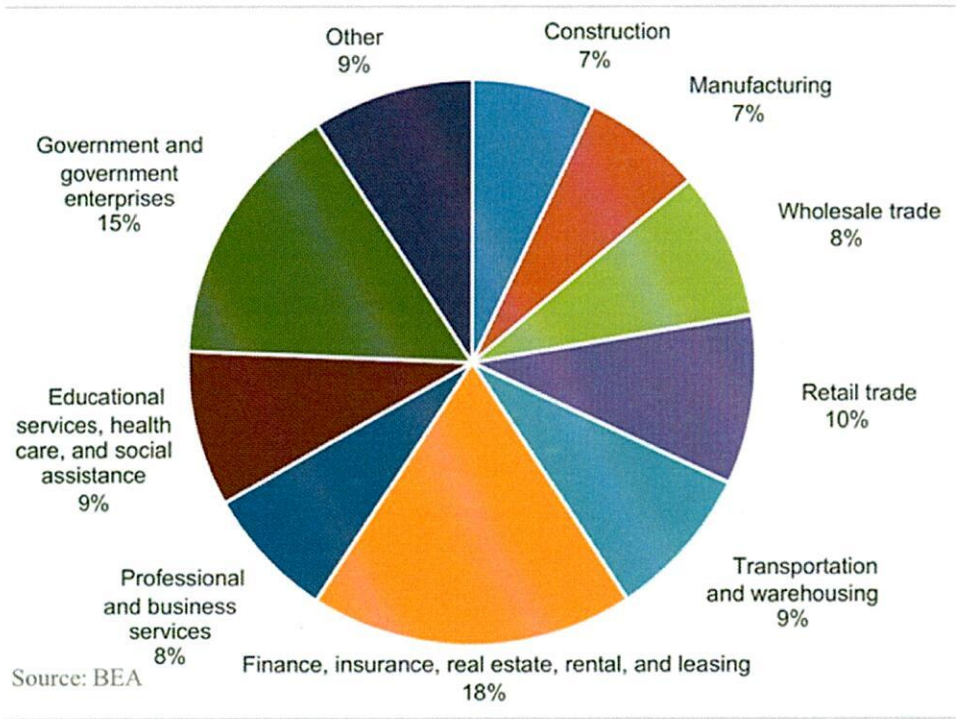
Jobs - County

Jobs - County

Major occupational group	Percent of total employment		Mean hourly wage (\$)
	United States	Riverside	
Total, all occupations	100.0	100.0	30.90
Management	7.1	5.1	62.83
Business and financial operations	6.7	4.2	42.15
Computer and mathematical	3.4	1.2	51.82
Architecture and engineering	1.7	0.9	49.20
Life, physical, and social science	0.9	0.7	43.62
Community and social service	1.7	1.9	34.19
Legal	0.8	0.4	69.03
Educational instruction and library	5.8	6.4	37.81
Arts, design, entertainment, sports, and media	1.4	0.9	33.35
Healthcare practitioners and technical	6.2	5.5	58.92
Healthcare support	4.8	7.5	18.66
Protective service	2.4	2.8	32.31
Food preparation and serving related	8.8	10.0	19.66
Building and grounds cleaning and maintenance	2.9	2.9	21.24
Personal care and service	2.0	2.1	20.19
Sales and related	8.7	8.0	24.05
Office and administrative support	11.8	10.6	25.27
Farming, fishing, and forestry	0.3	0.4	19.35
Construction and extraction	4.1	5.0	34.64
Installation, maintenance, and repair	3.9	3.8	32.19
Production	5.7	4.5	23.96
Transportation and material moving	8.9	15.3	24.01



FIGURE 31: SHARE OF TOTAL OUTPUT BY INDUSTRY
INLAND EMPIRE, 2022



- The industries with the highest share of output in the Inland Empire MSA are government and government enterprises and finance, insurance, real estate, rental and leasing. Real estate, rental and leasing makes up a significantly higher share of output over finance and insurance, making up 86 percent of the output within that industry.
- The “other” category consists of (1) mining, quarrying, and oil and gas extraction, (2) agriculture, forestry, fishing and hunting, (3) utilities, (4) information, and (5) arts, entertainment, recreation, accommodation and food services.

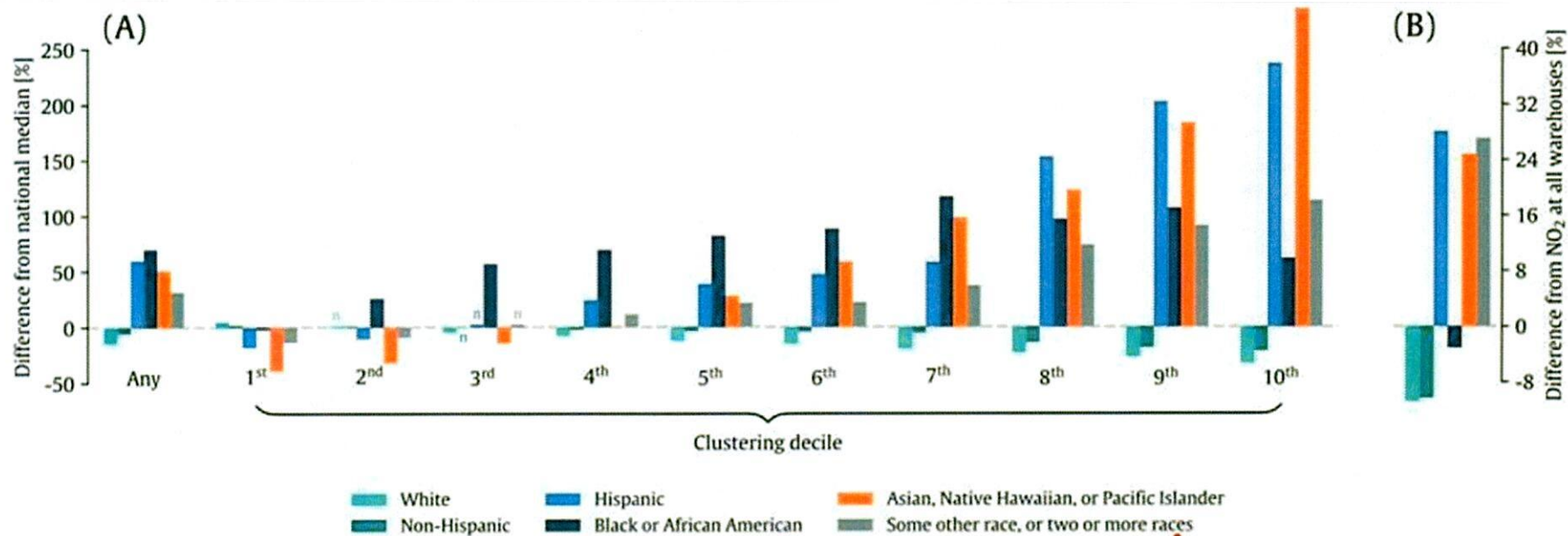
Jobs - County

TABLE 3: EMPLOYMENT LEVEL, LARGE MSAs/COUNTY, CES, CHANGE FROM YEAR AGO, DEC 2023

Area	Dec-23	YtY Change	% Change
Riverside-San Bernardino-Ontario MSA	1,703,700	32,400	1.9%
Los Angeles-Long Beach-Glendale Metro Div	4,682,300	95,900	2.1%
Oxnard-Thousand Oaks-Ventura MSA	322,200	8,100	2.6%
Anaheim-Santa Ana-Irvine Metro Div	1,730,400	35,900	2.1%
Sacramento--Roseville--Arden-Arcade MSA	1,102,900	29,700	2.8%
Fresno MSA	394,900	8,400	2.2%
Oakland-Hayward-Berkeley Metro Div	1,206,500	22,100	1.9%
San Diego-Carlsbad MSA	1,581,400	23,400	1.5%
San Francisco-Redwood City-South San Francisco Metro Div	1,214,400	15,600	1.3%
San Jose-Sunnyvale-Santa Clara MSA	1,190,300	13,400	1.1%
Bakersfield MSA	293,100	3,100	1.1%
Stockton-Lodi MSA	277,800	1,600	0.6%

Note: SoCal areas highlighted in blue

Jobs - County



nature communications

Article

<https://doi.org/10.1038/s41467-024-50000-0>

Air pollution impacts from warehousing in the United States uncovered with satellite data

Received: 20 August 2023

Gaige Hunter Kerr¹, Michelle Meyer², Daniel L. Goldberg¹, Joshua Miller² & Susan C. Anenberg¹

Accepted: 25 June 2024

Published online: 24 July 2024

African American population (by 69.5%); Asian, Native Hawaiian, or Pacific Islander population (by 50.9%); and population identifying as some other race or two or more races (by 31.5%) in 2021 (Fig. 4A). As the number of clustered warehouses increased, the proportions of racial-ethnic minorities also increased. In the top ten percent of tracts with the most warehouses, the proportion of the Hispanic population was nearly 240% higher (28.1% versus 8.3%) and the Asian population nearly 290% higher than U.S. median values (6.2% versus 1.6%).

Community